

O.D.O.T. DISTRICT 2 SURVEY OFFICE (USE ONLY)

PERSONNEL

REFERENCE NO. 128 C

SHEET 7 OF 17

NOTES RHOADES  
 H.C. AUBLE  
 R.C. O'DONNELL

DATE 9/30/20  
 WEATHER CLOUDY  
 TEMP. 54°

ROUTE SR 163  
 COUNTY OTTAWA  
 TOWNSHIP PORTAGE  
 SECTION 34  
 T 7 N R 17 E

DWG BY NIESE PID 107919

TYPE MONUMENT P.K./WASHER

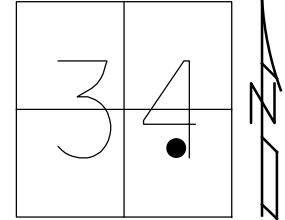
ON SURFACE - ~~BELOW~~ ON

OFFSET Q PAVEMENT ON LT : RT  
11.0' TO RT EDGE PAVEMENT

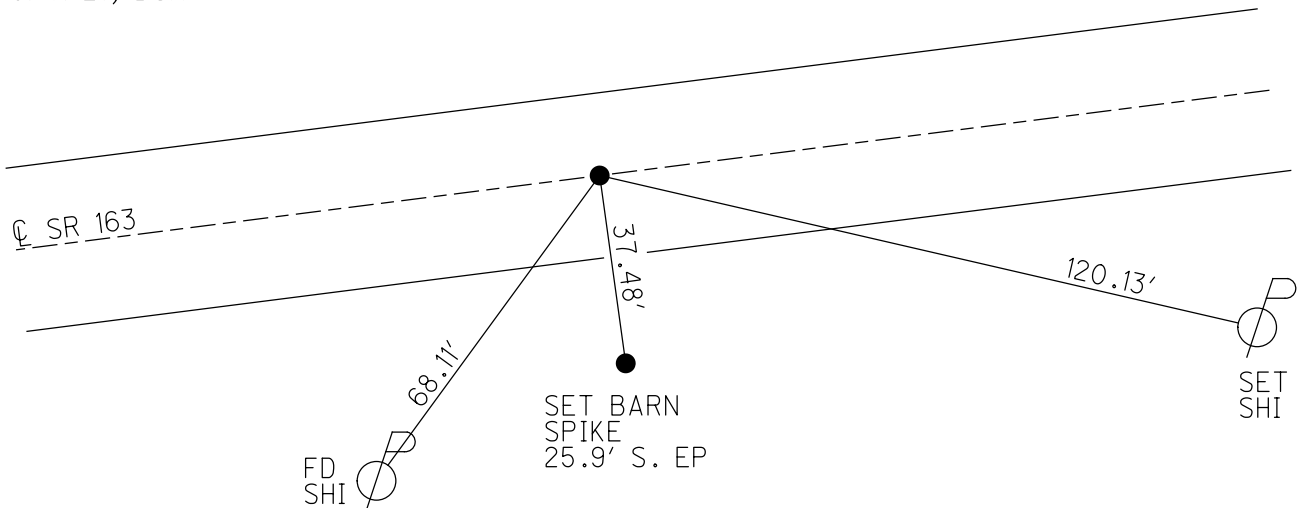
STATION: 1503+73.31

HORZ.DATUM: NAD83 (2011) GEOID: NAVD88 2012A

GRID: NORTHING: 675066.201 EASTING: 1863945.194



RECORD: P.O.T.  
 STA. 103+13.63  
 FD P.K./WASHER  
 6/11/93, JLR  
 SET P.K./WASHER  
 7/13/93, JLR  
 FD P.K./WASHER  
 11/9/00  
 FD P.K./WASHER  
 REFC128  
 9/17/18  
 9/30/20, JFO  
 SET MAG/WASHER  
 9/7/21, DSA



O.D.O.T. DISTRICT 2 SURVEY OFFICE (USE ONLY)

PERSONNEL

REFERENCE NO. 128 C

SHEET 7 OF 18

NOTES CHENEY

DATE 6/11/93

ROUTE SR 163

H.C. RIPPLE

WEATHER SUNNY

COUNTY OTTAWA

R.C. BARBOUR

TEMP. 75°

TOWNSHIP PORTAGE

GEYMAN

SECTION 34

T 7 N R 17 E

TYPE MONUMENT P.K./WASHER

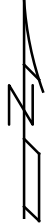
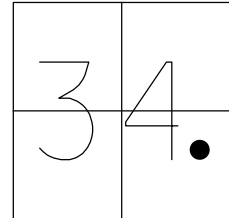
ON SURFACE - ~~BELOW~~ ON

~~LEFT - C~~ PAV'T - ~~RIGHT~~ ON

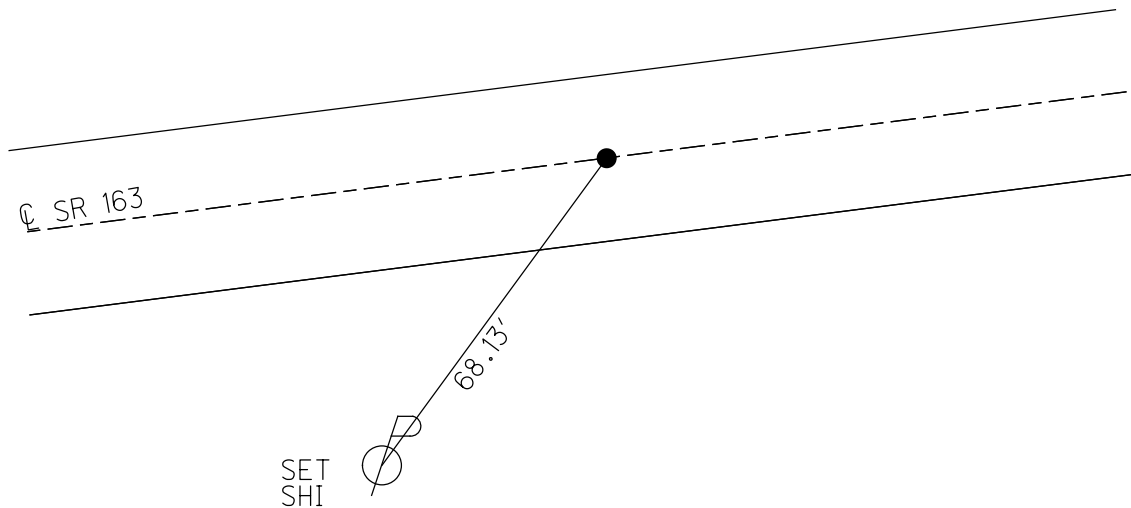
11' TO RT EDGE PAVEMENT

S.L.M. 1505+96

GRID: NORTHING: 675066.201 EASTING: 1863945.194



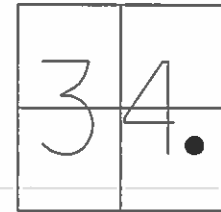
RECORD: P.O.T.  
STA. 103+13.63  
FD P.K./WASHER  
6/11/93, BC  
SET P.K./WASHER  
7/13/93, JLR  
FD P.K./WASHER  
11/9/00  
REFC128  
9/17/18, JFO



**O.D.O.T. DISTRICT 2 SURVEY OFFICE (USE ONLY)**

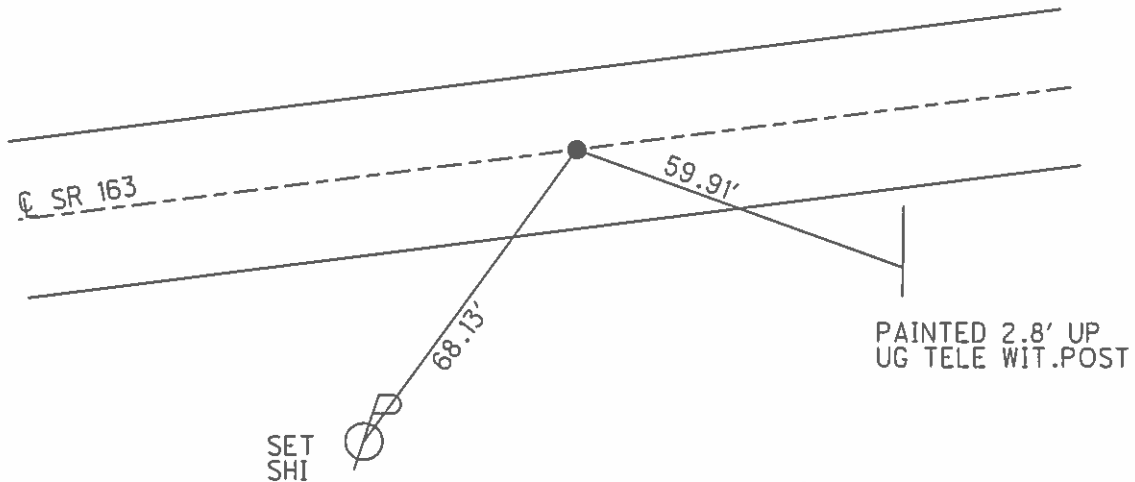
PERSONNEL \_\_\_\_\_ REFERENCE NO. 128 C SHEET 7 OF 18  
 NOTES CHENEY DATE 6/11/93 ROUTE SR 163  
 H.C. RIPPLE WEATHER SUNNY COUNTY OTTAWA  
 R.C. BARBOUR TEMP. 75° TOWNSHIP PORTAGE  
GEYMAN SECTION 34  
 T 7 N R 17 E

TYPE MONUMENT P.K./WASHER  
 ON SURFACE - ~~BELOW~~ ON  
~~LEFT~~ - ℄ PAV'T - ~~RIGHT~~ ON  
11' TO RT EDGE PAVEMENT  
 S.L.M. 1505+96



GRID: NORTHING: \_\_\_\_\_ EASTING: \_\_\_\_\_

RECORD: P.O.T.  
 STA. 103+13.63  
 SET P.K./WASHER  
 7/13/93, JLR



PREVENTIVE MAINTENANCE  
 MICROSURFACED 2000  
 EXISTING POINT UNCOVERED  
 DATE: 11/9/2000

O.D.O.T. DISTRICT 2 SURVEY OFFICE (Use Only)

PERSONNEL	REFERENCE NO. <u>128 C</u>	SHEET <u>7</u> OF <u>18</u>
NOTES <u>Cheney</u>	DATE <u>6-11-1993</u>	ROUTE <u>SR 163</u>
H.C. <u>Ripple</u>	WEATHER <u>Sunny</u>	COUNTY <u>OTTAWA</u>
R.C. <u>Barbour</u>	TEMP. <u>75°</u>	TOWNSHIP <u>PORTAGE</u>
<u>Geyman</u>		SECTION <u>34</u>
		T. <u>7</u> N R. <u>17</u> E

TYPE MONUMENT Fd. P.K. and Washer

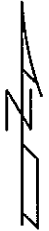
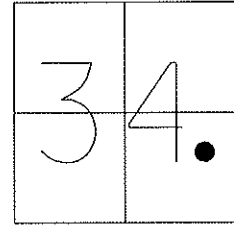
ON SURFACE - ~~BELOW~~ On Surface

~~LEFT~~ - CL PAV'T - ~~RIGHT~~ On CL Pav'T

11' TO RT. EDGE PAVEMENT

S.L.M. 1505+96

Grid: Northing: \_\_\_\_\_ Easting: \_\_\_\_\_



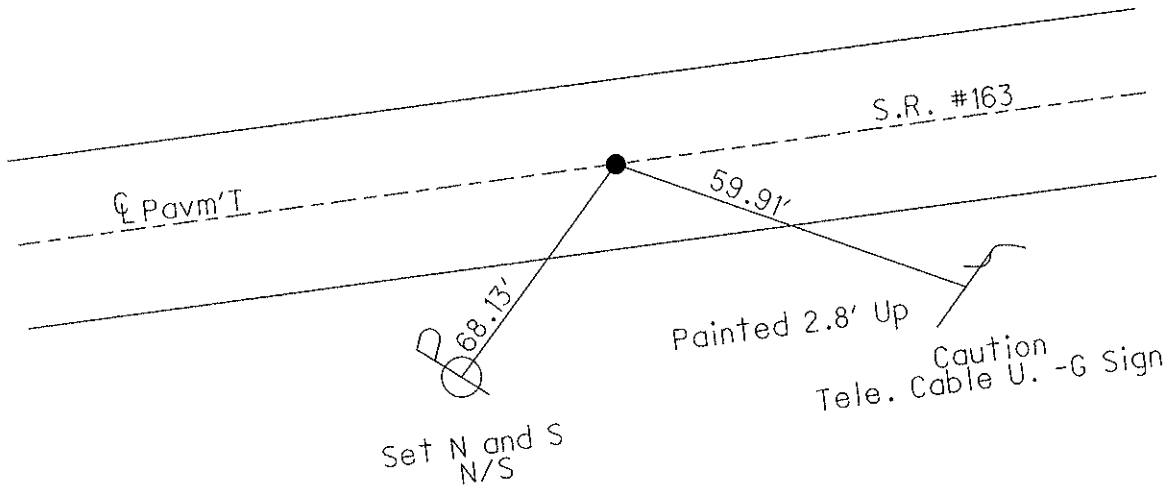
Record: P.O.T. S.T.

103+13.63 BK. = 103+25.33 Ahd.

Does Not Check for the Ahd. STA.

Note: Set P.K. and Washer

7-13-1993 J.L.R



Preventive Maintenance  
 Microsurfaced 2000  
 Existing Point Uncovered  
 Date: 11-9-2000

# O.D.O.T. DISTRICT 2 SURVEY OFFICE

PERSONNEL

REFERENCE NO. 128 C

SHEET 11 OF 23

NOTES CHENEY

H.C. RIPPLE

R.C. BARBOUR

GEYMAN

DATE 6-11-1993

WEATHER SUNNY

TEMP. 75°

ROUTE S.R.#163

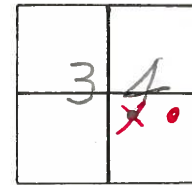
COUNTY OTTAWA

TOWNSHIP PORTAGE

SECTION 34

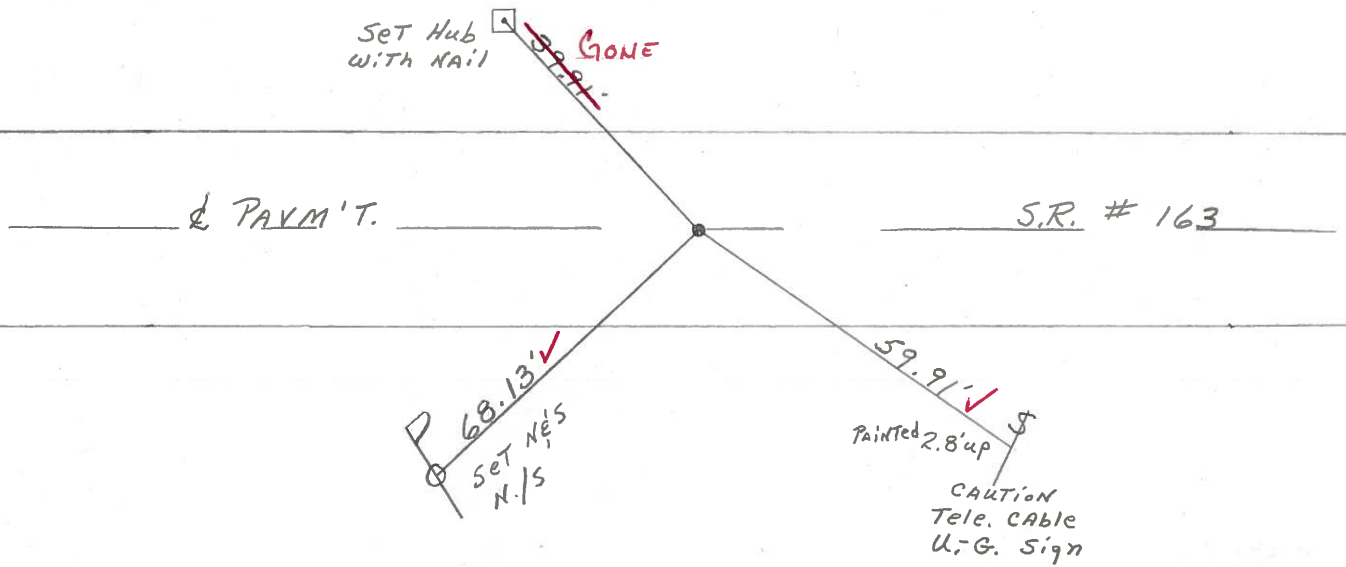
T 7 N R 17 E

TYPE MONUMENT F.P.K. & WASHER  
 ON SURFACE - ~~BELOW~~ ON SURFACE  
~~LEFT - & PAV'T. - RIGHT~~ ON & PAV'T.  
11' TO RT. EDGE PAVEMENT  
 S.L.M. 1505 + 96



RECORD: P.O.T. S.T.  
103+13.63 BK. = 103+25.33 Ahd.  
Does NOT check for The  
Ahd STA.

NOTE: SET P.K. & WASHER  
7-13-1993 J.L.R.



Preventive Maintenance  
 Microsurfaced ~ 2000  
 Existing Point Uncovered  
 Date 11-9-2000

O.D.O.T. DISTRICT 2 SURVEY OFFICE

PERSONNEL

REFERENCE NO. \_\_\_\_\_

SHEET 11 OF \_\_\_\_\_

NOTES CRONIN

H.C. RIPPLE

R.C. BARBOUR

GEYMAN

DATE 9/16/85

WEATHER SUNNY

TEMP. 64°

ROUTE # 163

COUNTY OTTAWA

TOWNSHIP PORTAGE

SECTION 34

T 1 N R 17 E

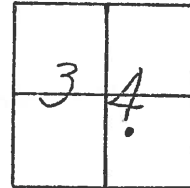
TYPE MONUMENT P.K. WASHER TOP NAIL

ON SURFACE - BELOW SWINGER ON SURFACE

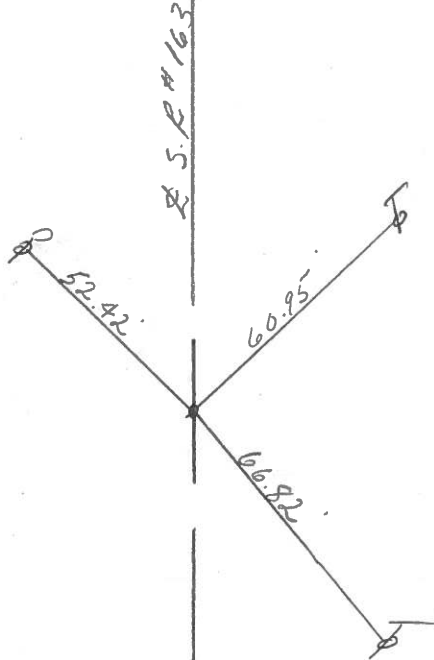
LEFT - & PAV'T. - RIGHT & PAV'T.

TO \_\_\_\_\_ EDGE PAVEMENT

S.L.M. \_\_\_\_\_



128C



P.O.T. S.T.

103+13.63 B.P. = 103+25.33 Ahd.

Does not check out for the Ahd. Sta.



PERSONNEL TITLE PERSONNEL TITLE  
 Cronin \_\_\_\_\_ Schneider \_\_\_\_\_  
 Ripple \_\_\_\_\_ Mosser \_\_\_\_\_  
 Geyman \_\_\_\_\_ Barbour \_\_\_\_\_

COUNTY Ottawa DATE 11/16/76

S. R. # 163 WEATHER Sunny

SEC. \_\_\_\_\_ TEMP. 25°

DESCRIPTION Ties for Control Points

JOB NO. \_\_\_\_\_

