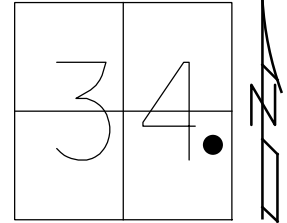


O.D.O.T. DISTRICT 2 SURVEY OFFICE (USE ONLY)

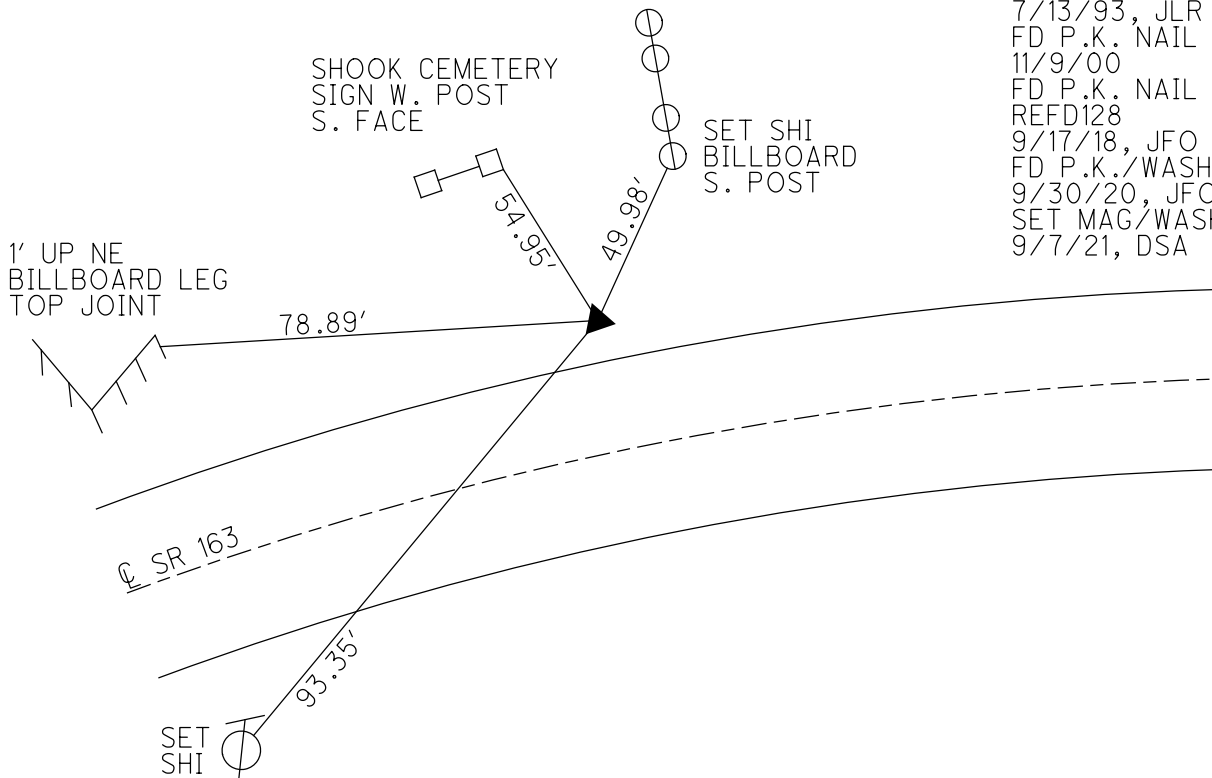
PERSONNEL _____ REFERENCE NO. 128 D SHEET 8 OF 17
 NOTES RHOADES DATE 9/30/20 ROUTE SR 163
 H.C. AUBLE WEATHER CLOUDY COUNTY OTTAWA
 R.C. O'DONNELL TEMP. 54° TOWNSHIP PORTAGE
 DWG BY NIESE PID 107919 SECTION 34
 T 7 N R 17 E

TYPE MONUMENT P.K./WASHER
 ON SURFACE - ~~BELOW~~ ON
 OFFSET \odot PAVEMENT 13.0' LT : ~~RT~~
 2.5' LT OF LT EDGE PAVEMENT
 STATION: 1521+09.32



HORZ.DATUM: NAD83 (2011) GEOID: NAVD88 2012A
 GRID: NORTHING: 675741.603 EASTING: 1865553.305

RECORD: P.I.
 $\Delta = 13^\circ 24' RT$
 STA. 120+58.78
 P.K./WASHER
 ATOP P.K./WASHER
 FD P.K./WASHER
 6/11/93, JLR
 SET P.K./WASHER
 7/13/93, JLR
 FD P.K. NAIL
 11/9/00
 FD P.K. NAIL
 REF D128
 9/17/18, JFO
 FD P.K./WASHER
 9/30/20, JFO
 SET MAG/WASHER
 9/7/21, DSA



O.D.O.T. DISTRICT 2 SURVEY OFFICE (USE ONLY)

PERSONNEL

REFERENCE NO. 128 D

SHEET 8 OF 18

NOTES CHENEY

DATE 6/11/93

ROUTE SR 163

H.C. RIPPLE

WEATHER SUNNY

COUNTY OTTAWA

R.C. BARBOUR

TEMP. 75°

TOWNSHIP PORTAGE

GEYMAN

SECTION 34

T 7 N R 17 E

TYPE MONUMENT P.K./WASHER

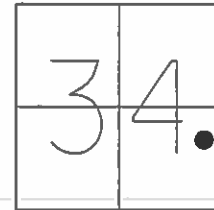
ON SURFACE - ~~BELOW~~ ON

LEFT - ☉ PAV'T - ~~RIGHT~~ 13'

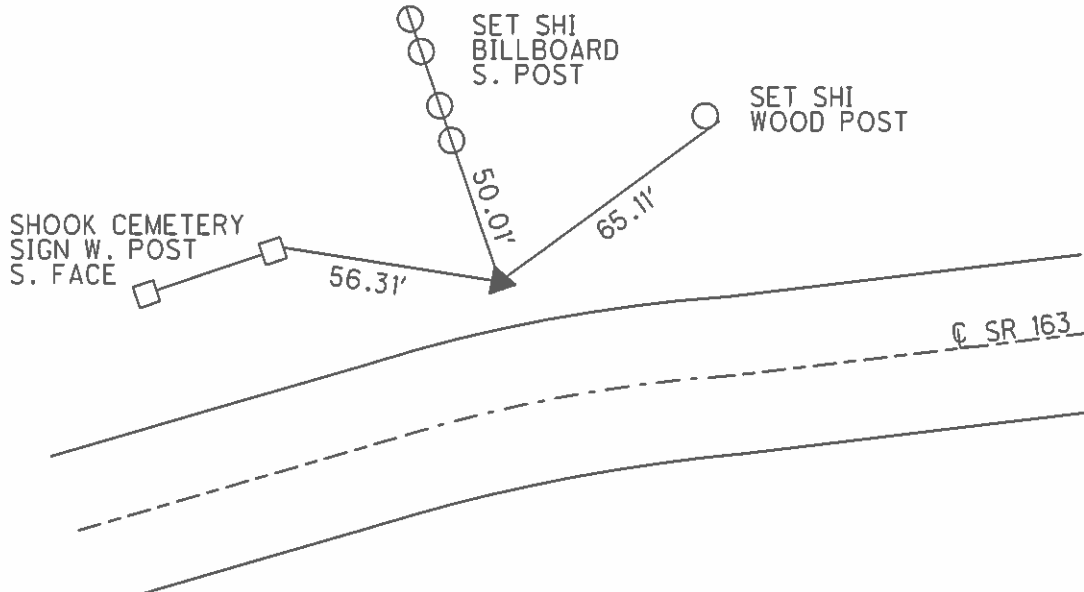
1.5 RT TO LT EDGE PAVEMENT

S.L.M. 1523+45

GRID: NORTHING: _____ EASTING: _____



RECORD: P.I.
 $\Delta = 13^\circ 24' RT$
 STA. 120+58.78
 P.K./WASHER
 ATOP P.K./WASHER
 SET P.K./WASHER
 7/13/93, JLR



PREVENTIVE MAINTENANCE
 MICROSURFACED 2000
 EXISTING POINT UNCOVERED
 DATE: 11/9/2000

O.D.O.T. DISTRICT 2 SURVEY OFFICE (Use Only)

PERSONNEL _____

REFERENCE NO. 128 D

SHEET 8 OF 18

NOTES Cheney

DATE 6-11-1993

ROUTE SR 163

H.C. Ripple

WEATHER Sunny

COUNTY OTTAWA

R.C. Barbour

TEMP. 75°

TOWNSHIP PORTAGE

Geyman

SECTION 34

T 7 N R 17 E

TYPE MONUMENT Fd. P.K. and Washer

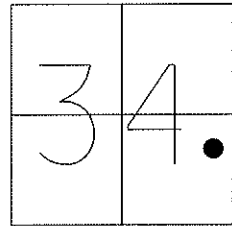
ON SURFACE - ~~BELOW~~ ON _____

LEFT - C PAV'T - RIGHT _____ 13' LT. C

1.5 RT. TO LT. EDGE PAVEMENT

S.L.M. 1523+45

Grid: Northing: _____ Easting: _____



Record: 9-16-1985

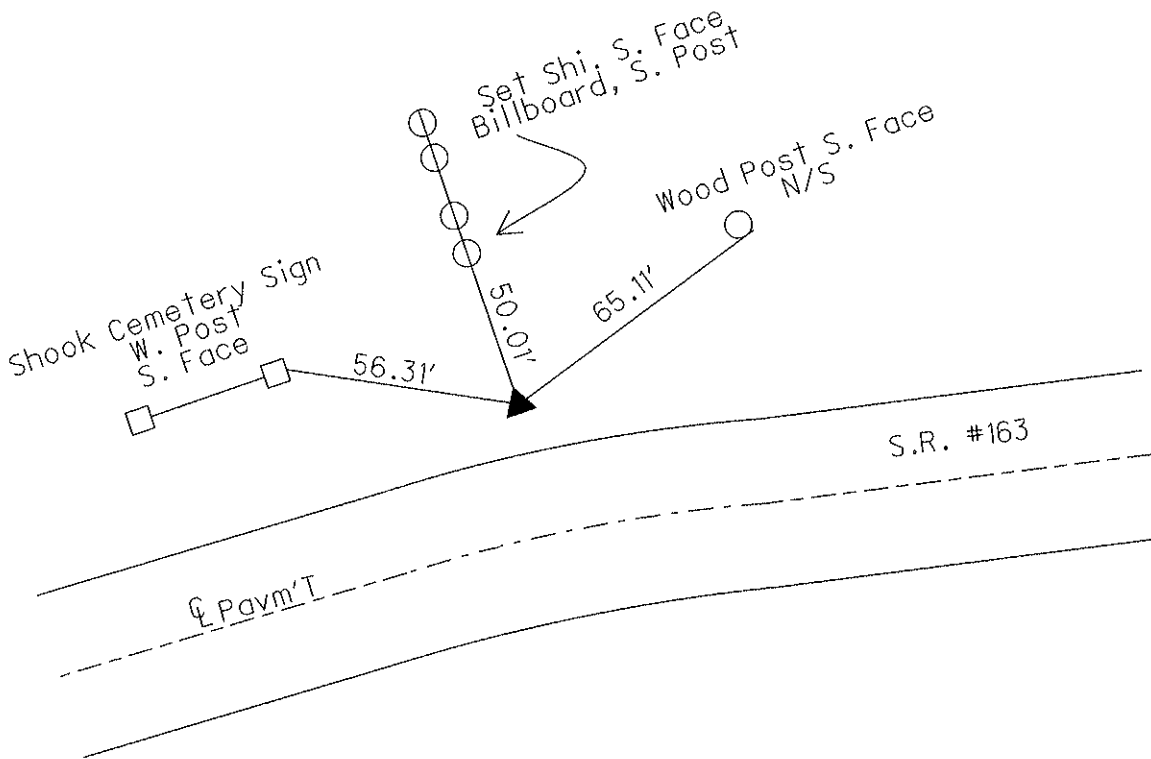
P.I. Δ = 13° 24' RT.

120+58.78

P.K. and Washer Atop P.K. and Washer

Note: Set P.K. and Washer

7-13-1993 J.L.R.



Preventive Maintenance
 Microsurfaced 2000
 Existing Point Uncovered
 Date: 11-9-2000

O.D.O.T. DISTRICT 2 SURVEY OFFICE

PERSONNEL

REFERENCE NO. 128 D

SHEET 12 OF 23

NOTES CHENEY

H.C. RIPPLE

R.C. BARBOUR

GEYMAN

DATE 6-11-1993

WEATHER SUNNY

TEMP. 75°

ROUTE SR#163

COUNTY OTTAWA

TOWNSHIP PORTAGE

SECTION 34

T7 N R 17 E

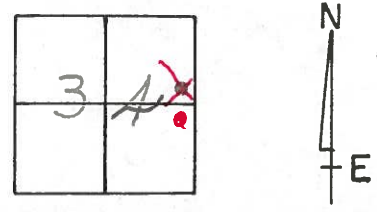
TYPE MONUMENT Fd. P.K. & Washer

ON SURFACE - ~~BELOW~~ ON SURFACE

LEFT- & PAVM'T. - ~~RIGHT~~ 13' LT &

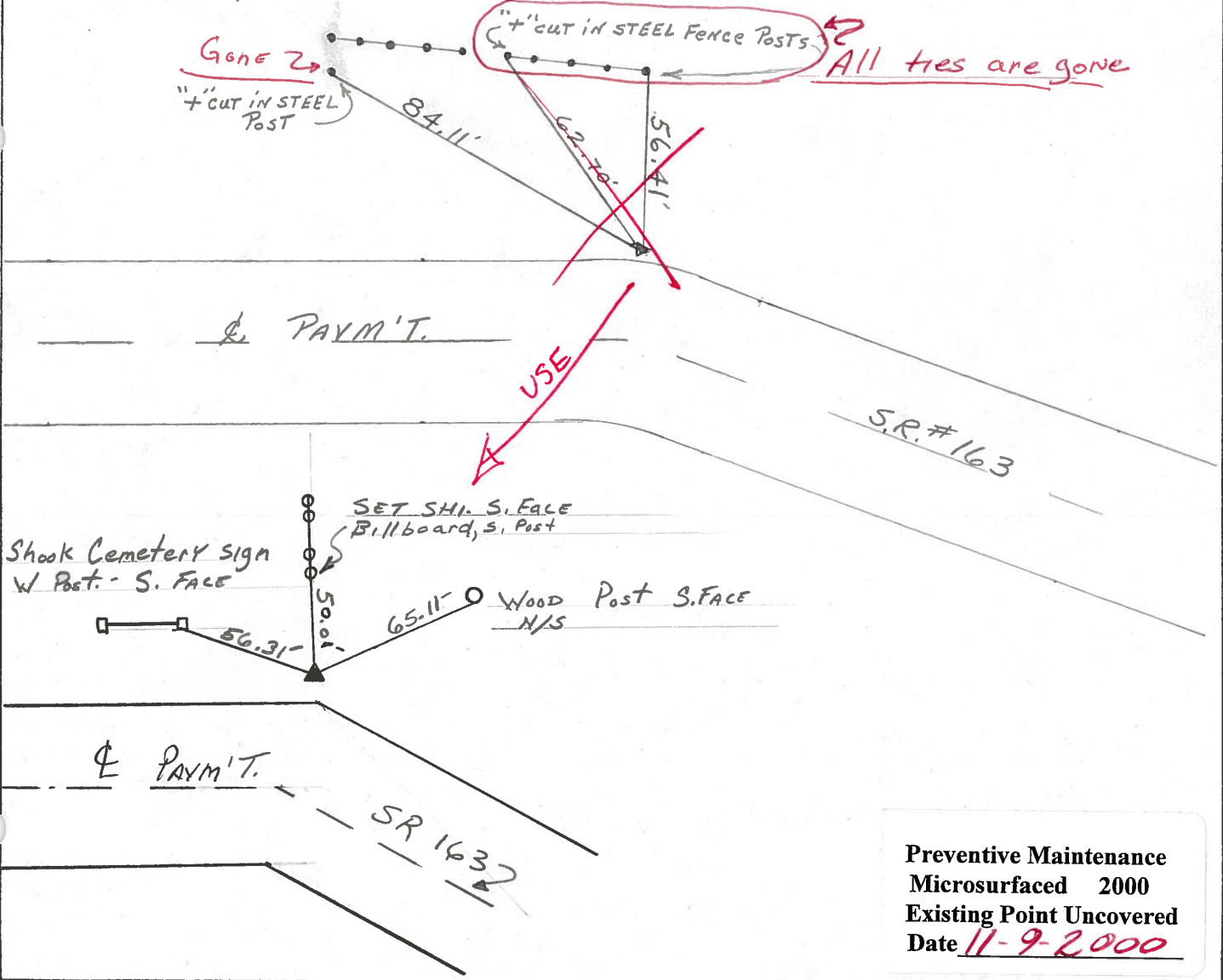
1.5 RT. TO LT. EDGE PAVEMENT

S.L.M. 1523+45



Record: 9-16-1985
 P.I. Δ = 13°24' RT.
120+58.78
 P.K. & WASHER AT Top P.K. & WASHER

NOTE: SET P.K. & WASHER
7-13-1993 JLR.



Preventive Maintenance
 Microsurfaced 2000
 Existing Point Uncovered
 Date 11-9-2000

O.D.O.T. DISTRICT 2 SURVEY OFFICE

PERSONNEL _____

REFERENCE NO. _____

SHEET 12 OF _____

NOTES CROWIN

H.C. RIPPLE

R.C. BARBOUR

GEYMAN

DATE 9/16/85

WEATHER SUNNY

TEMP. 64°

ROUTE #163

COUNTY OTTAWA

TOWNSHIP PORTAGE

SECTION 34

T 7 N R 17 E

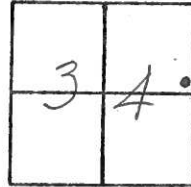
TYPE MONUMENT P.K. WASHER AT OP 50' E. P.N.

ON SURFACE - BELOW ON SURFACE

LEFT - & PAW'T. - RIGHT 13.5' L & PAW'T.

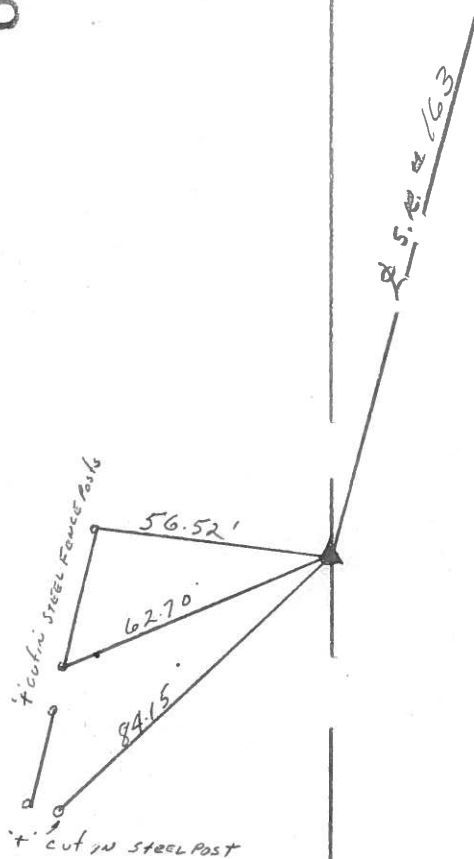
TO _____ EDGE PAVEMENT

S.L.M. _____



1280

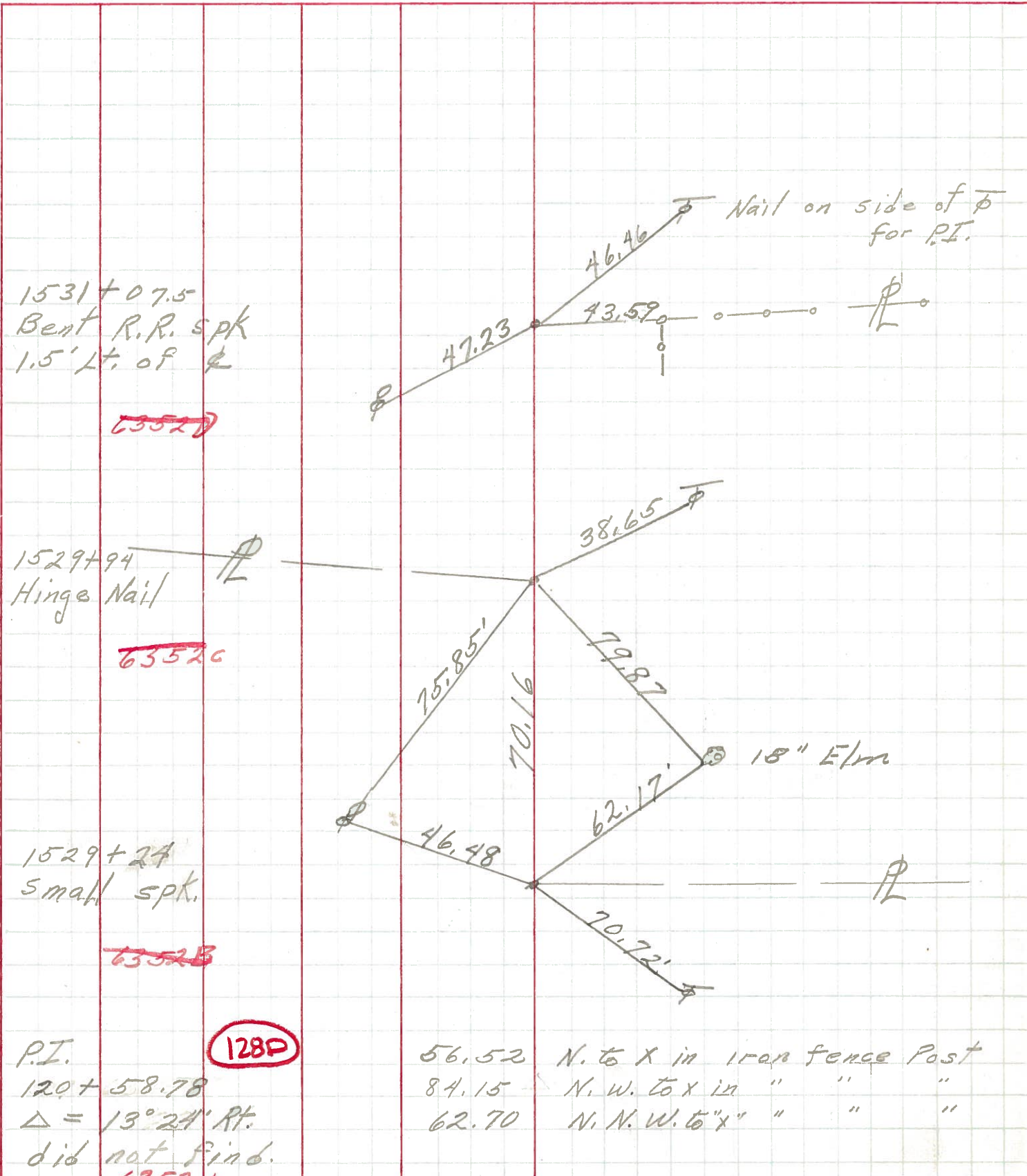
P.E. Δ = 13°24' RT.
120 + 58.78



PERSONNEL TITLE PERSONNEL TITLE
Schneider _____
Mosser _____
Potts _____

COUNTY Ottawa DATE 3-2-70
 S. R. 163 WEATHER Cloudy
 SEC. Port Clinton-East TEMP. 35°

DESCRIPTION Ties for Control Points JOB NO. _____
 LEFT CENTER LINE RIGHT



1531+07.5
 Bent R.R. spk
 1.5' Lt. of center line

~~6352D~~

1529+94
 Hinge Nail

~~6352C~~

1529+24
 Small spk.

~~6352B~~

P.I. 128P
 120+58.78
 $\Delta = 13^\circ 24' \text{ Rt.}$
 did not find.

56.52 N. to X in iron fence Post
 84.15 N. W. to X in " " "
 62.70 N. N. W. to "X" " " "

PERSONNEL	TITLE	PERSONNEL	TITLE	COUNTY	DATE
Schneider		Potts		Ottawa	9-4-68
Masser				S. R.	163
Barbour				WEATHER	75°
Redding				SEC.	Port Clinton-East
				TEMP.	Fair
DESCRIPTION	Ties for Control Points			JOB NO.	

