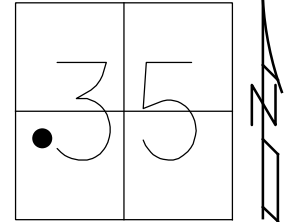


O.D.O.T. DISTRICT 2 SURVEY OFFICE (USE ONLY)

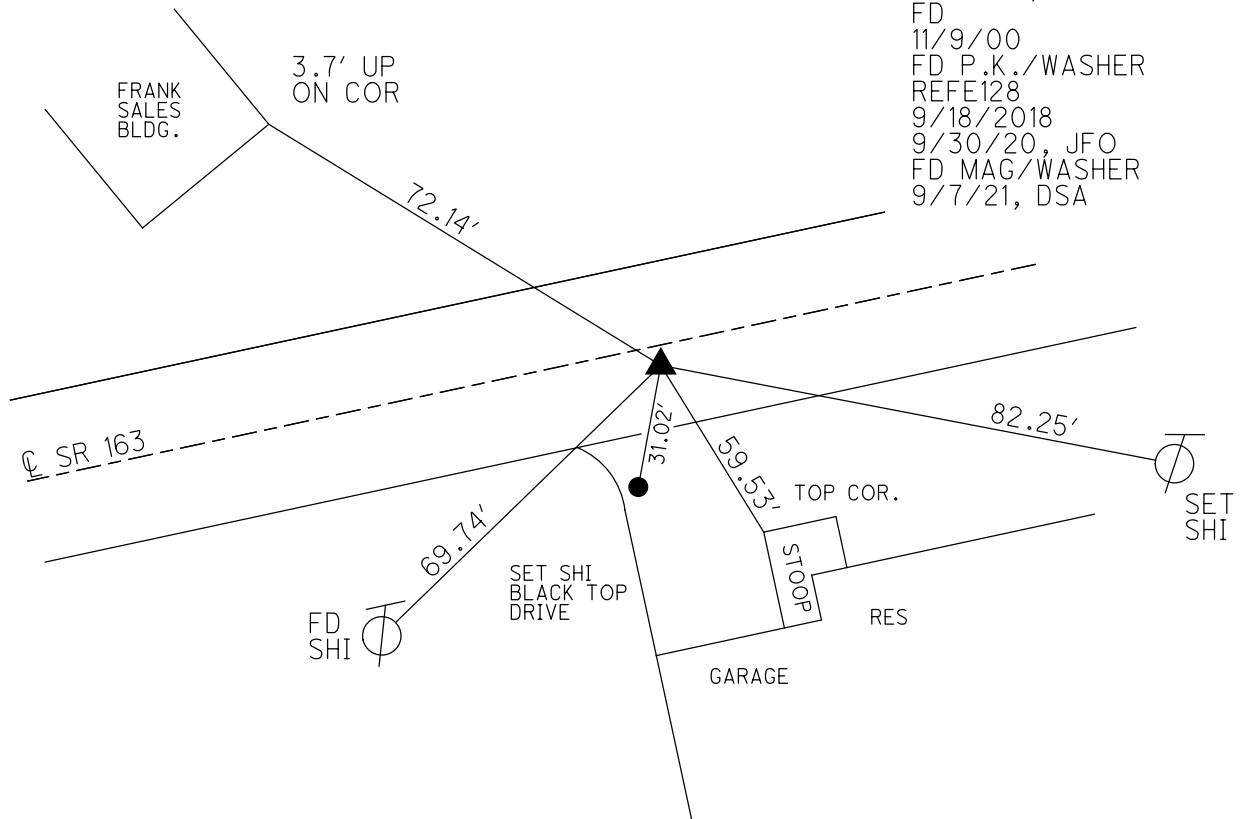
PERSONNEL \_\_\_\_\_ REFERENCE NO. 128 E SHEET 9 OF 17  
 NOTES RHOADES DATE 9/30/20 ROUTE SR 163  
 H.C. AUBLE WEATHER CLOUDY COUNTY OTTAWA  
 R.C. O'DONNELL TEMP. 54° TOWNSHIP PORTAGE  
 DWG BY NIESE PID 107919 SECTION 35  
 T 7 N R 17 E

TYPE MONUMENT P.K./WASHER  
 ON SURFACE - ~~BELOW~~ ON  
 OFFSET 11.0' TO RT EDGE PAVEMENT  
 STATION: 1530+20.31



HORZ.DATUM: NAD83(2011) GEOID: NAVD88 2012A  
 GRID: NORTHING: 675891.901 EASTING: 1866453.840

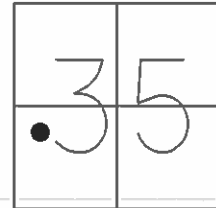
RECORD: P.I.  
 $\Delta = 01^\circ 22' \text{ LT}$   
 STA. 129+65.58  
 P.K./WASHER  
 ATOP P.K./WASHER  
 FD P.K./WASHER  
 6/11/93, JLR  
 SET P.K./WASHER  
 7/13/93, JLR  
 FD  
 11/9/00  
 FD P.K./WASHER  
 REFE128  
 9/18/2018  
 9/30/20, JFO  
 FD MAG/WASHER  
 9/7/21, DSA



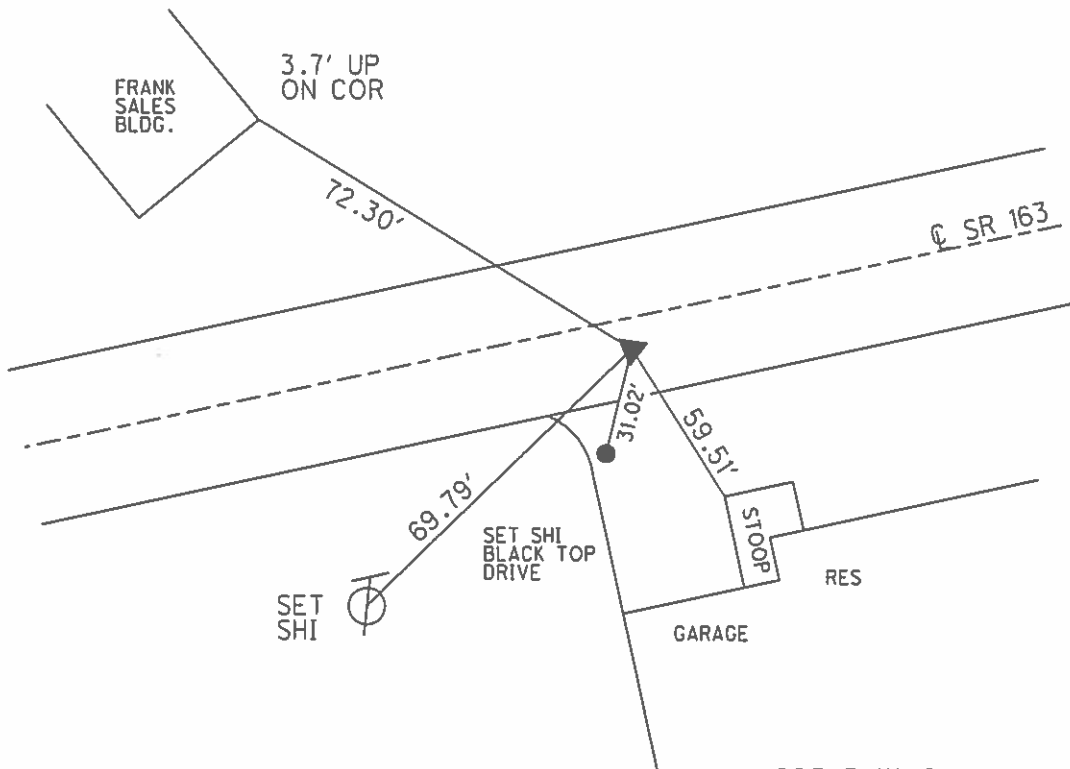
O.D.O.T. DISTRICT 2 SURVEY OFFICE (USE ONLY)

PERSONNEL \_\_\_\_\_ REFERENCE NO. 128 E SHEET 9 OF 18  
 NOTES CHENEY DATE 6/11/93 ROUTE SR 163  
 H.C. RIPPLE WEATHER SUNNY COUNTY OTTAWA  
 R.C. BARBOUR TEMP. 75° TOWNSHIP PORTAGE  
GEYMAN SECTION 35  
T 7 N R 17 E

TYPE MONUMENT P.K./WASHER  
 ON SURFACE - ~~BELOW~~ ON  
~~LEFT~~ - Q PAV'T - RIGHT 1'  
11' TO RT EDGE PAVEMENT  
 S.L.M. 1532+61  
 GRID: NORTHING: \_\_\_\_\_ EASTING: \_\_\_\_\_



RECORD: P.I.  
 $\Delta = 01^\circ 22' \text{ LT}$   
 STA. 129+65.58  
 P.K./WASHER  
 ATOP P.K./WASHER  
 SET P.K./WASHER  
 7/13/93, JLR



PREVENTIVE MAINTENANCE  
 MICROSURFACED 2000  
 EXISTING POINT UNCOVERED  
 DATE: 11/9/2000

O.D.O.T. DISTRICT 2 SURVEY OFFICE (Use Only)

PERSONNEL

REFERENCE NO. 128 E

SHEET 9 OF 18

NOTES Cheney  
 H.C. Ripple  
 R.C. Barbour  
Geyman

DATE 6-11-1993  
 WEATHER Sunny  
 TEMP. 75°

ROUTE SR 163  
 COUNTY OTTAWA  
 TOWNSHIP PORTAGE  
 SECTION 35  
T 7 N R 17 E

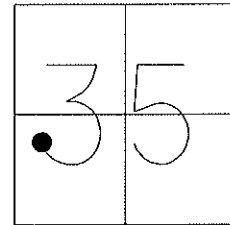
TYPE MONUMENT Fd. P.K. and Washer

ON SURFACE - ~~BELOW~~ On Surface

~~LEFT~~ C/P PAV'T - RIGHT 1' RT. C/P Pav'T  
11' TO RT. EDGE PAVEMENT

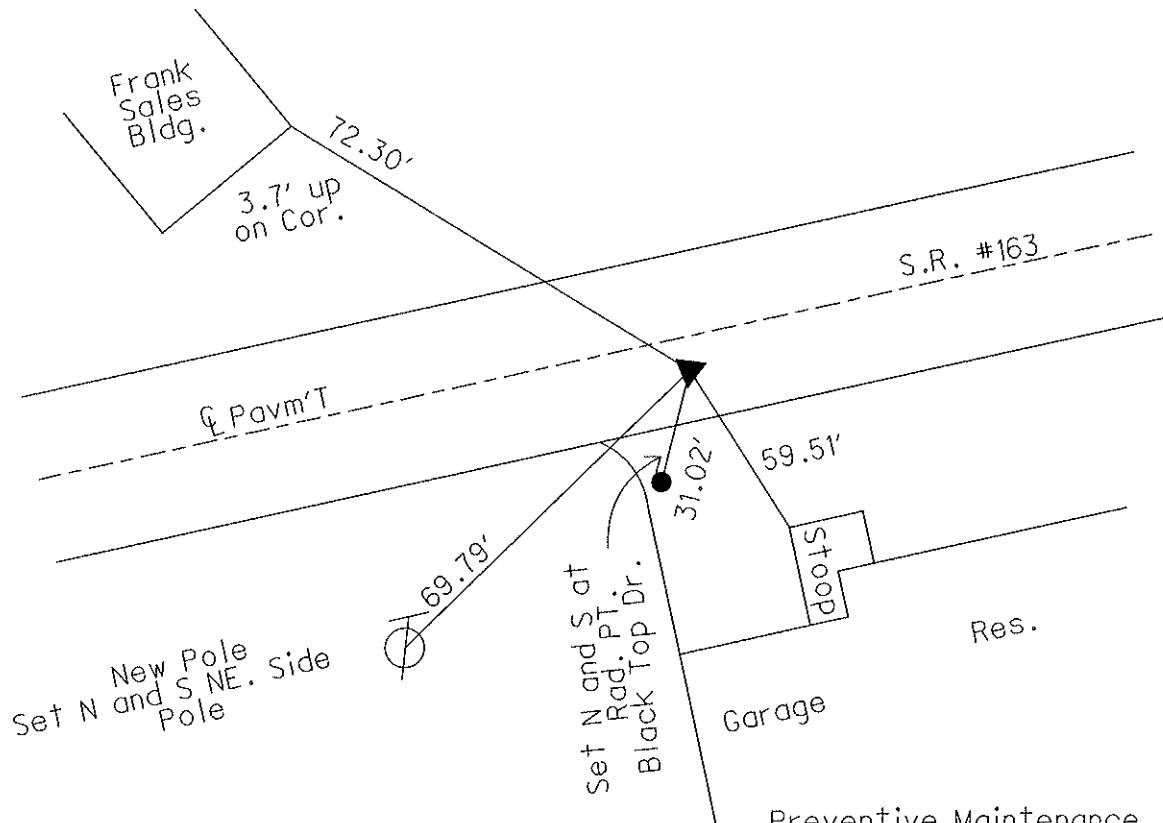
S.L.M. 1532+61

Grid: Northing: \_\_\_\_\_ Easting: \_\_\_\_\_



Record: 9-16-1985  
 P.I. Δ = 01° 22' LT.  
 129+65.58  
 P.K. and Washer Atop P.K. and Washer

Note: Set P.K. and Wahser  
 7-13-1993 J.L.R.



Preventive Maintenance  
 Microsurfaced 2000  
 Existing Point Uncovered  
 Date: 11-9-2000

O.D.O.T. DISTRICT 2 SURVEY OFFICE

PERSONNEL

REFERENCE NO. 128 E

SHEET 13 OF 23

NOTES CHENEY

H.C. RIPPLE

R.C. BARBOUR

GEYMAN

DATE 6-11-1993

WEATHER SUNNY

TEMP. 75°

ROUTE SR#163

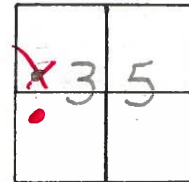
COUNTY OTTAWA

TOWNSHIP PORTAGE

SECTION 35

T7 N R 17 E

TYPE MONUMENT Ed. P.K. & WASHER  
 ON SURFACE - BELOW ON SURFACE  
 LEFT - PAV'T. - RIGHT 1' RT. & PAV'T.  
11' TO RT. EDGE PAVEMENT  
 S.L.M. 1532+61



Record: 9-16-1985  
PT. Δ = 01° 22' Lt.  
129+65.58  
P.K. & WASHER ATOP P.K. & WASHER

NOTE: SET P.K. & WASHER  
7-13-1993 JLR.



Preventive Maintenance  
 Microsurfaced 2000  
 Existing Point Uncovered  
 Date 11-9-2000

# O.D.O.T. DISTRICT 2 SURVEY OFFICE

PERSONNEL \_\_\_\_\_

REFERENCE NO. \_\_\_\_\_

SHEET 13 OF \_\_\_\_\_

NOTES CRONIN

H.C. RIPPLE

R.C. BARBOUR

GEYMAN

DATE 9/16/85

WEATHER SUNNY

TEMP. 68°

ROUTE #163

COUNTY OTTAWA

TOWNSHIP PORTAGE

SECTION 35

T 7 N R 17 E

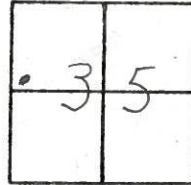
TYPE MONUMENT P.K. WASHER AT OP P.K. WASHER

ON SURFACE - BELOW ON SURFACE

LEFT- & PAV'T. - RIGHT 1' RT. & PAVT.

TO EDGE PAVEMENT

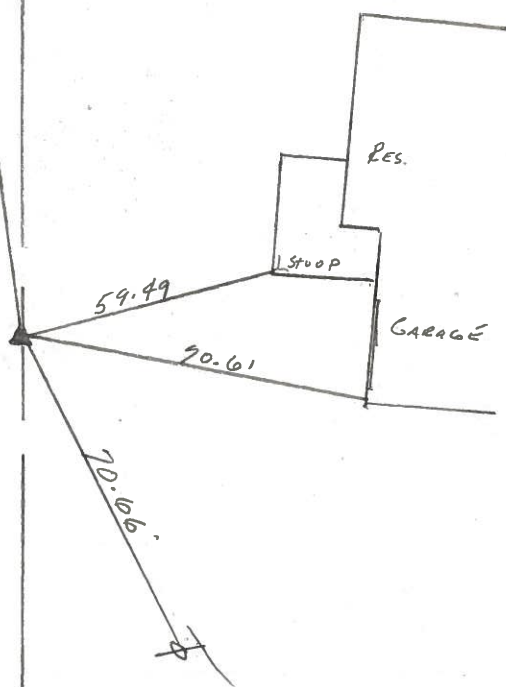
S.L.M. \_\_\_\_\_



128E

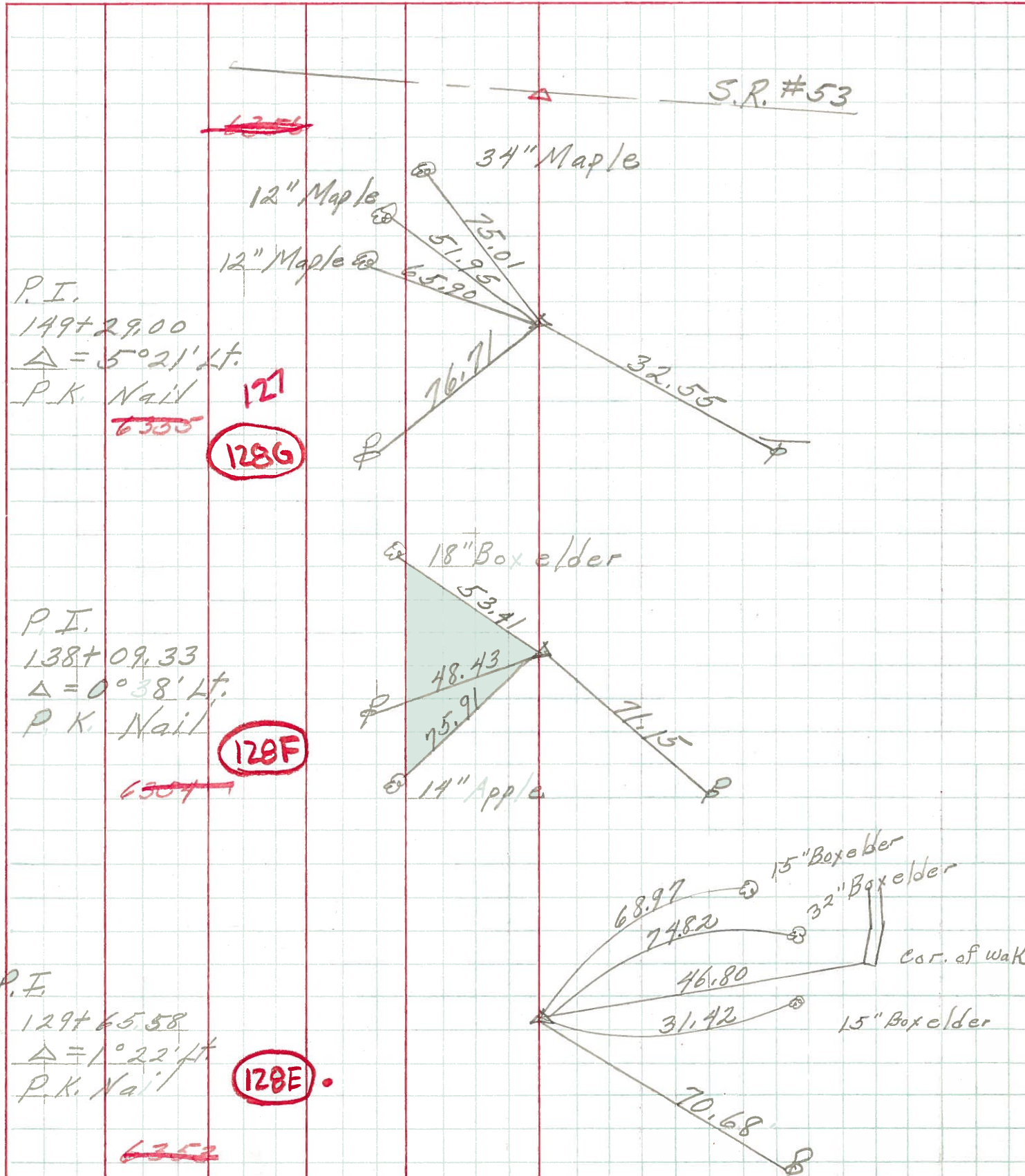
S.S.R. # 163

P.I. A = 01° 22' Lt.  
129 + 65.58



PERSONNEL	TITLE	PERSONNEL	TITLE	COUNTY	DATE
<u>Schneider</u>				<u>Ottawa</u>	<u>3-2-70</u>
<u>Mosser</u>				S. R. <u>163</u>	WEATHER <u>cloudy</u>
<u>Potts</u>				SEC. <u>Port Clinton - East</u>	TEMP. <u>35°</u>
<u>Ripple</u>					

DESCRIPTION: Ties for control Points JOB NO. \_\_\_\_\_



PERSONNEL TITLE PERSONNEL TITLE COUNTY Okawa DATE 9-4-68  
Schneider \_\_\_\_\_ Potts \_\_\_\_\_  
Mosser \_\_\_\_\_ \_\_\_\_\_  
Barbour \_\_\_\_\_ \_\_\_\_\_  
Redding \_\_\_\_\_ \_\_\_\_\_  
 S. R. 163 WEATHER 75°  
 SEC. Port Clinton-East TEMP. Fair  
 DESCRIPTION Ties for Control Points JOB NO. \_\_\_\_\_

	LEFT	CENTER LINE	RIGHT
138+09.33 $\Delta = 0^\circ 38' Lt$ P.K. Nail	<b>128F</b>	18" Box elder 53.41 48.43 15.59 17" Apple	71.15 15" Box elder 32" Box elder 15" Box elder
6354			
P.I. 129+65.58 $\Delta = 1^\circ 22' Lt$ P.K. Nail	<b>128E</b>		68.94 74.82 31.39 70.68
6353			(56.52 N. to X in frame fence Post 84.15 N.W. to X in " " " 62.70 N.N.W. to X " " " did not find 45.83 $\overline{P}$ )
120+58.78 $\Delta = 13^\circ 24' Rt.$	<b>128D</b>		
6352			
P.C. $\xrightarrow{P.K. Nail}$		40.28	Top of 1st. block 87.40 $\times$ 2 story Frame Res. 91.92 did not find
99+00.70 $\Delta = 25^\circ 59' Lt.$	<b>128B</b>		did not find
6351			
88+27.02 $\Delta = 21^\circ 51' Rt.$	<b>127F</b>		8385 S.S.E. 36" Maple 4937 S.E. 20" Walnut 7940 E.S.E. 24" Maple 4363 S.W. Cable pole 9045 S.E. Power pole
6350			
76+50.91 $\Delta = 18^\circ 56' Lt$	<b>127E</b>	did not find	
6349			