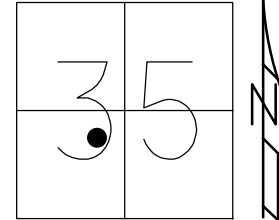


O.D.O.T. DISTRICT 2 SURVEY OFFICE (USE ONLY)

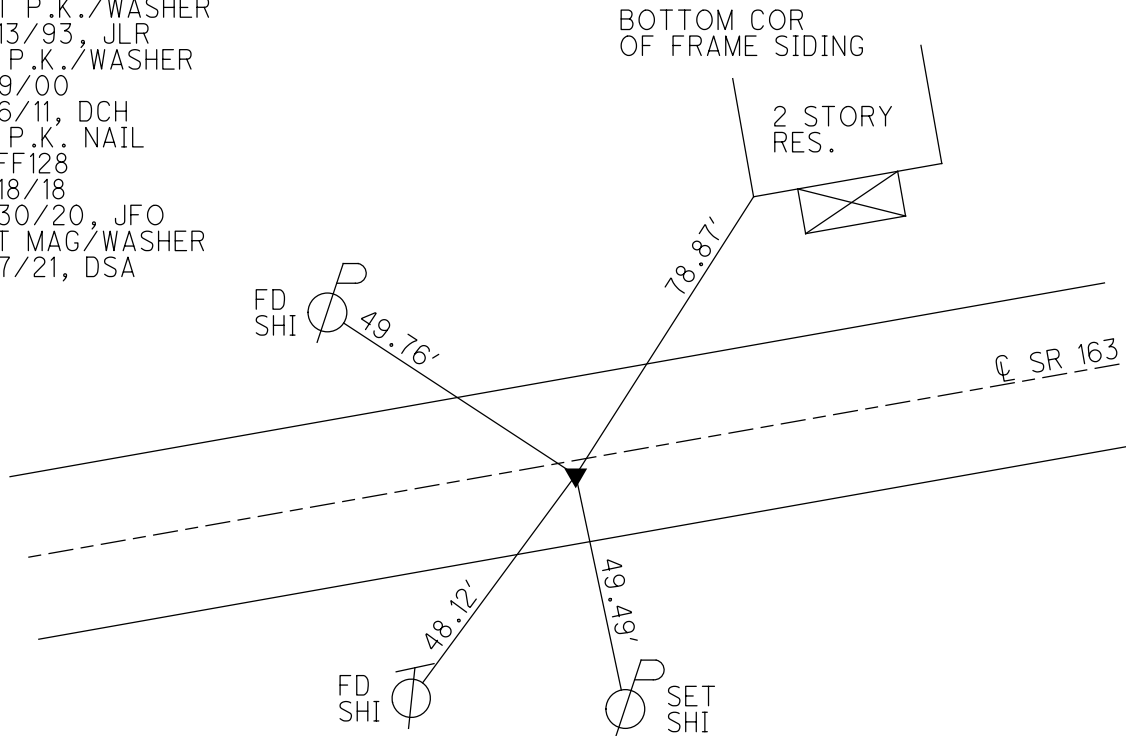
PERSONNEL \_\_\_\_\_ REFERENCE NO. 128 F SHEET 10 OF 17  
 NOTES RHOADES DATE 9/30/20 ROUTE SR 163  
 H.C. AUBLE WEATHER CLOUDY COUNTY OTTAWA  
 R.C. O'DONNELL TEMP. 54° TOWNSHIP PORTAGE  
 DWG BY NIESE PID 107919 SECTION 35  
 T 7 N R 17 E

TYPE MONUMENT P.K. NAIL  
 ON SURFACE - ~~BELOW~~ ON  
 OFFSET 11.0' TO RT EDGE PAVEMENT  
 STATION: 1538+58.75



HORZ. DATUM: NAD83(2011) GEOID: NAVD88 2012A  
 GRID: NORTHING: 676047.065 EASTING: 1867277.807

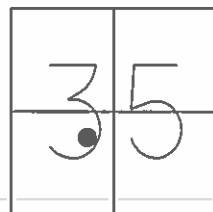
RECORD: P.I.  
 $\Delta = 00^\circ 38' LT$   
 STA. 138+09.33  
 P.K./WASHER  
 ATOP P.K./WASHER  
 SET P.K./WASHER  
 7/13/93, JLR  
 FD P.K./WASHER  
 11/9/00  
 9/6/11, DCH  
 FD P.K. NAIL  
 REFF128  
 9/18/18  
 9/30/20, JFO  
 SET MAG/WASHER  
 9/7/21, DSA



**O.D.O.T. DISTRICT 2 SURVEY OFFICE (USE ONLY)**

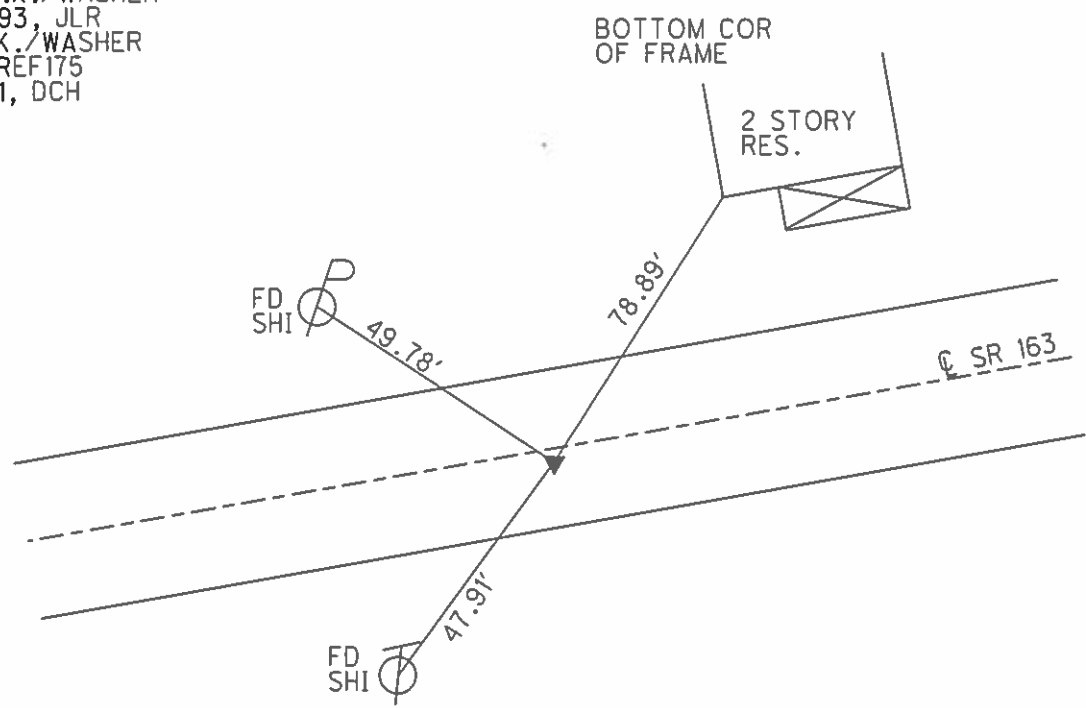
PERSONNEL \_\_\_\_\_ REFERENCE NO. 128 F SHEET 10 OF 18  
 NOTES HOMAN DATE 9/6/11 ROUTE SR 163  
 H.C. ROUSOS WEATHER CLOUDY COUNTY OTTAWA  
 R.C. HOMAN TEMP. 61° TOWNSHIP PORTAGE  
 \_\_\_\_\_ SECTION 35  
 \_\_\_\_\_ T 7 N R 17 E

TYPE MONUMENT P.K./WASHER  
 ON SURFACE - ~~BELOW~~ ON  
~~LEFT~~ - CL PAV'T - RIGHT 1.0'  
11' TO RT. EDGE PAVEMENT  
 S.L.M. 1541+01



GRID: NORTHING: 676046.938 EASTING: 1867277.662

RECORD: P.1.  
 $\Delta = 00^\circ 38' \text{ LT}$   
 STA. 138+09.33  
 P.K./WASHER  
 ATOP P.K./WASHER  
 SET P.K./WASHER  
 7/13/93, JLR  
 FD P.K./WASHER  
 GPS, REF175  
 9/6/11, DCH

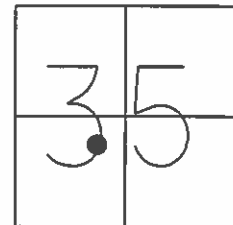


PREVENTIVE MAINTENANCE  
 MICROSURFACED 2000  
 EXISTING POINT UNCOVERED  
 DATE: 11/9/2000

O.D.O.T. DISTRICT 2 SURVEY OFFICE (USE ONLY)

PERSONNEL \_\_\_\_\_ REFERENCE NO. 128 F SHEET 10 OF 18  
 NOTES HOMAN DATE 9/6/11 ROUTE SR 163  
 H.C. ROUSOS WEATHER CLOUDY COUNTY OTTAWA  
 R.C. HOMAN TEMP. 61° TOWNSHIP PORTAGE  
 \_\_\_\_\_ SECTION 35  
 \_\_\_\_\_ T 7 N R 17 E

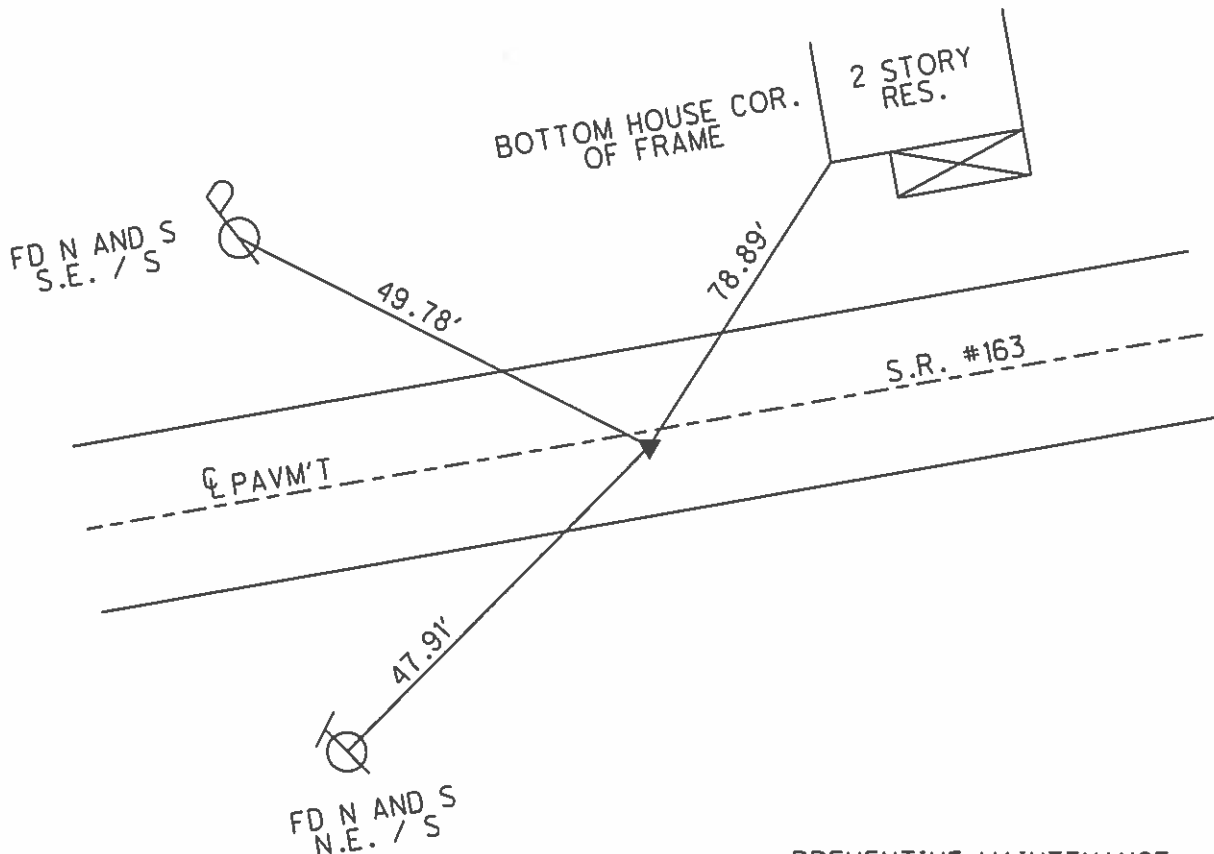
TYPE MONUMENT FD. P.K. AND WASHER  
 ON SURFACE - ~~BELOW~~ ON  
~~LEFT~~ - ℄ PAV'T - RIGHT 1.0'  
11' TO RT. EDGE PAVEMENT  
 S.L.M. 1541+01



GRID: NORTHING: 676046.938 EASTING: 1867277.662

RECORD: 9-16-1985  
 P.I. 00° 38' LT.  
 138+09.33  
 P.K. AND WASHER ATOP P.K. AND WASHER

NOTE:  
 SET P.K. AND WASHER  
 7-13-1993 J.L.R.  
 FD P.K./WASHER  
 GPS, REF175  
 9/6/11, DCH



PREVENTIVE MAINTENANCE  
 MICROSURFACED 2000  
 EXISTING POINT UNCOVERED  
 DATE: 11-9-2000

# O.D.O.T. DISTRICT 2 SURVEY OFFICE

PERSONNEL

REFERENCE NO. 128 F

SHEET 14 OF 23

NOTES CHENEY

H.C. RIPPLE

R.C. BARBOUR

Geyman

DATE 6-11-1993

WEATHER SUNNY

TEMP. 75°

ROUTE SR#163

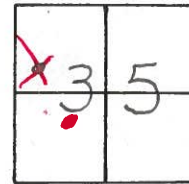
COUNTY OTTAWA

TOWNSHIP Portage

SECTION 35

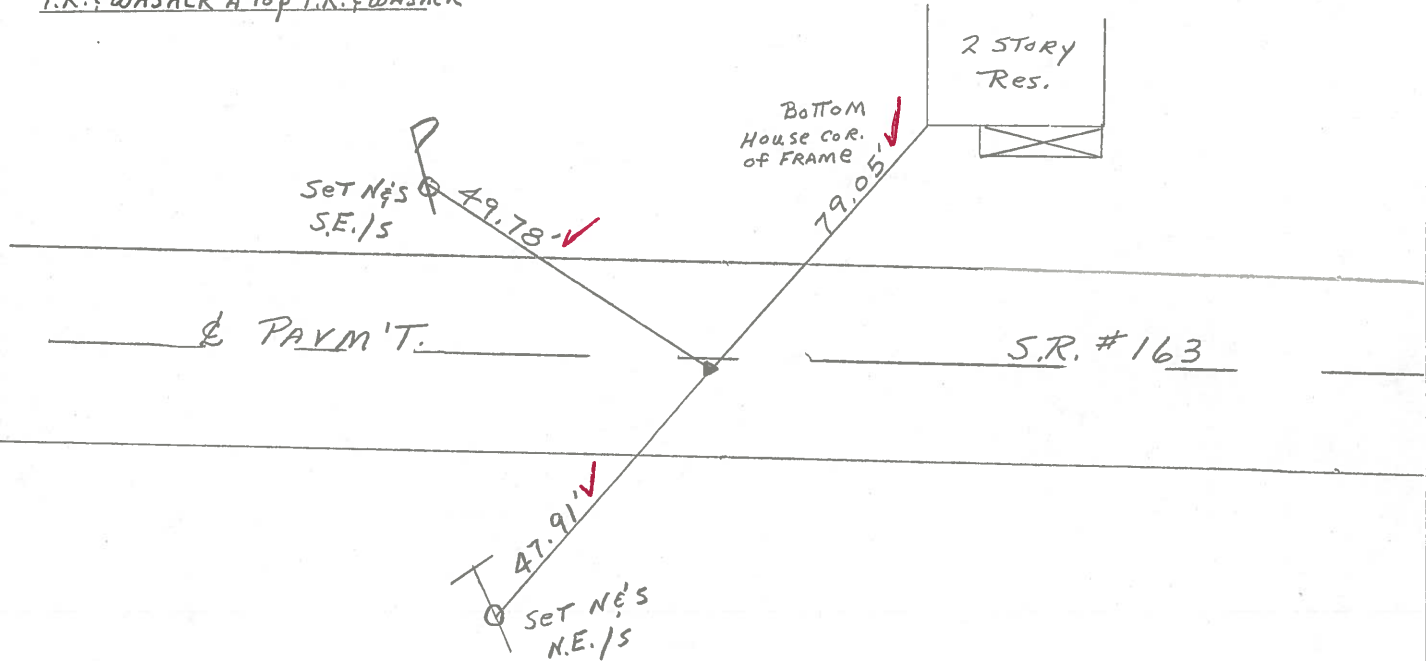
T7N R17E

TYPE MONUMENT Fd. P.K. & Washer  
 ON SURFACE - BELOW ON SURFACE  
~~LEFT - & PAV'T. - RIGHT~~ 1' RT. & PAV'T.  
11' TO RT. EDGE PAVEMENT  
 S.L.M. 1541+01



Record: 9-16-1985  
P.I. Δ = 00° 38' LT.  
138+09.33  
P.K. & Washer A Top P.K. & Washer

NOTE: SET P.K. & Washer  
7-13-1993 JLR.



Preventive Maintenance  
 Microsurfaced 2000  
 Existing Point Uncovered  
 Date 11-9-2000

# O.D.O.T. DISTRICT 2 SURVEY OFFICE

PERSONNEL \_\_\_\_\_

REFERENCE NO. \_\_\_\_\_

SHEET 14 OF \_\_\_\_\_

NOTES CASVIN

H.C. BREBOUR

R.C. RIPPLE

GEYMAN

DATE 9/16/85

WEATHER SUNNY

TEMP. 68°

ROUTE #163

COUNTY OTTAWA

TOWNSHIP PORTAGE

SECTION 35

T. 7 N. R. 17 E

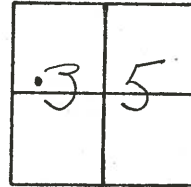
TYPE MONUMENT P.K. WASHER ATOP P.K. WASHER

ON SURFACE - BELOW ON SURFACE

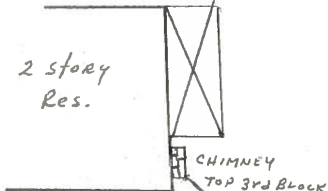
LEFT- & PAW'T. - RIGHT 1' RT. & PAW'T.

TO: EDGE PAVEMENT

S.L.M. \_\_\_\_\_

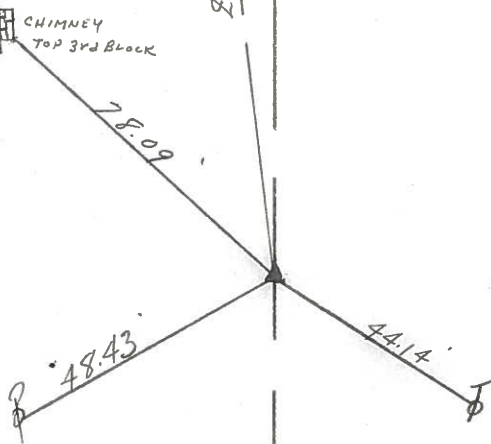


128F



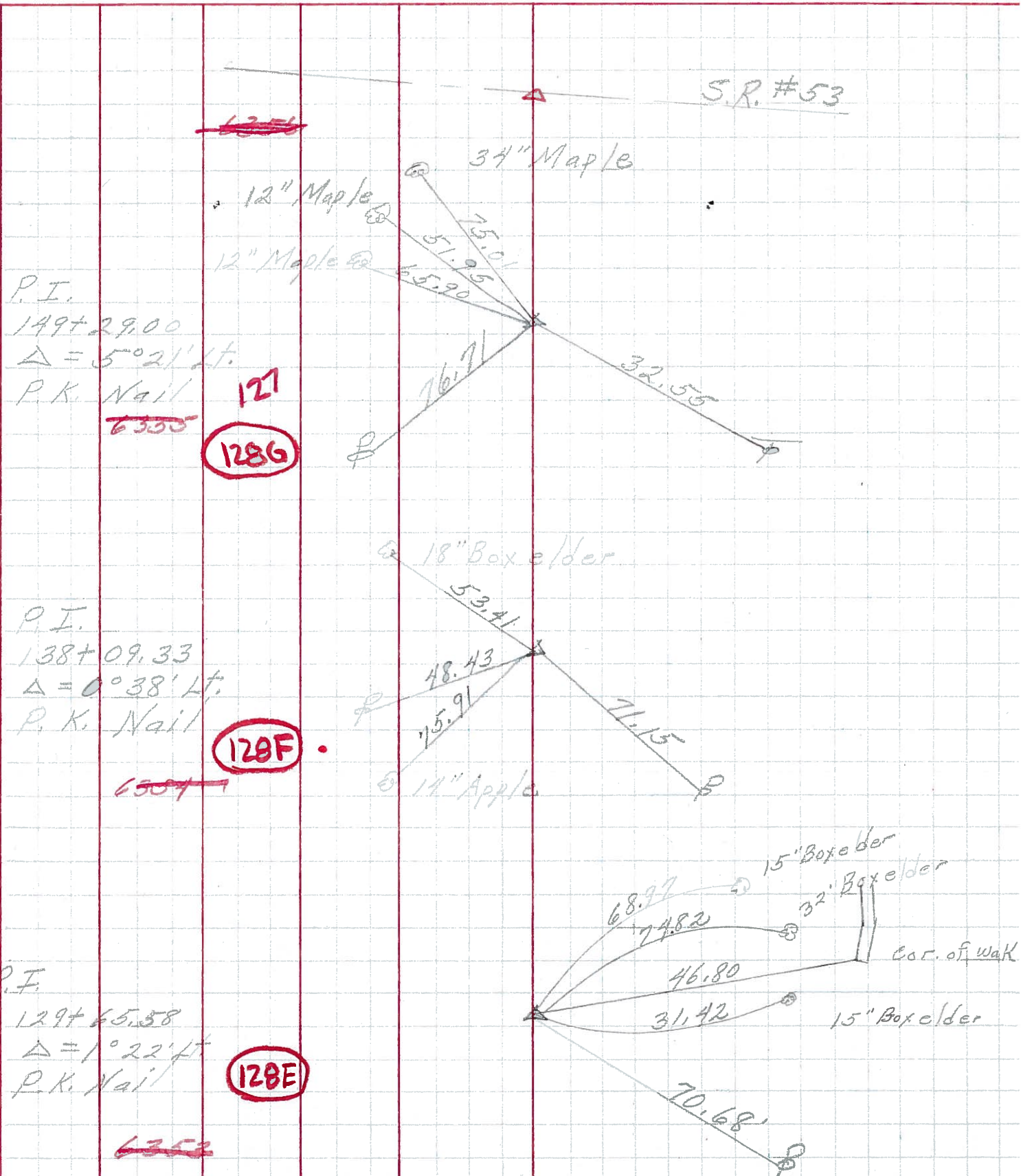
2 story Res.

S.R. #163



P.T.  $\Delta = 80^{\circ}38'44''$   
138+09.33

PERSONNEL	TITLE	PERSONNEL	TITLE	COUNTY	<u>Ottawa</u>	DATE	<u>3-2-70</u>
<u>Schneider</u>				S. R.	<u>163</u>	WEATHER	<u>Cloudy</u>
<u>Masser</u>				SEC.	<u>Port Clinton - East</u>	TEMP.	<u>35°</u>
<u>Pattis</u>				DESCRIPTION	<u>Ties for control Points</u>		JOB NO.
<u>Ripple</u>							



PERSONNEL	TITLE	PERSONNEL	TITLE	COUNTY	DATE
Schneider		Potts		Ottawa	9-4-68
Masser				S. R.	163
Barbour				WEATHER	75°
Redding				SEC.	Port Clinton-East
DESCRIPTION				TEMP.	Fair
Ties for Control Points				JOB NO.	

LEFT	CENTER LINE	RIGHT
<p>138+09.33  <math>\Delta = 0^\circ 38' Lt</math>                      P.K. Nail                      6354</p>	<p>18" Box elder                      53.41                      48.43                      15.91                      14" Apple</p>	<p>71.15                      15" Box elder                      32" Box elder                      15" Box elder</p>
<p>P.I.                      129+65.58  <math>\Delta = 1^\circ 22' Lt</math>                      P.K. Nail                      6353</p>	<p>128E</p>	<p>68.94                      74.82                      31.39                      70.68</p>
<p>120+58.78  <math>\Delta = 13^\circ 24' Rt</math>                      P.C. → P.K. Nail                      6352</p>	<p>128D</p>	<p>56.52 N. to X in Iron fence Post                      84.15 N.W. to X in " " "                      62.70 N.N.W. to X " " " "                      did not find                      45.83</p>
<p>99+00.70  <math>\Delta = 25^\circ 59' Lt</math>                      6351</p>	<p>128B</p>	<p>40.28                      87.40 Top of 1st. block                      91.92 2 story Frame Res.                      did not find</p>
<p>88+27.02  <math>\Delta = 24^\circ 57' Rt</math>                      6350</p>	<p>127F</p>	<p>did not find</p>
<p>76+50.91  <math>\Delta = 10^\circ 56' Lt</math>                      6349</p>	<p>127E</p>	<p>8385 S.S.E. 36" Maple                      49.37 S.E. 20" Walnut                      79.40 E.S.E. 24" Maple                      43.63 S.W. Cable pole                      90.45 S.E. Power pole</p>