

O.D.O.T. DISTRICT 2 SURVEY OFFICE (USE ONLY)

PERSONNEL

REFERENCE NO. 128 G

SHEET 11 OF 17

NOTES RHOADES

DATE 9/30/20

ROUTE SR 163

H.C. AUBLE

WEATHER CLOUDY

COUNTY OTTAWA

R.C. O'DONNELL

TEMP. 54°

TOWNSHIP PORTAGE

DWG BY NIESE PID 107919

SECTION 35

T 7 N R 17 E

TYPE MONUMENT MAG/WASHER

ON SURFACE - ~~BELOW~~ ON

OFFSET Q PAVEMENT 6.0' ~~LT~~ : RT
5.0' TO RT EDGE PAVEMENT

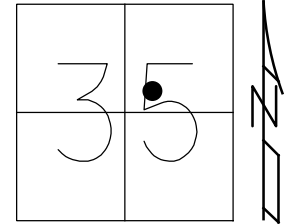
STATION: 1552+23

HORZ.DATUM: NAD83(2011)

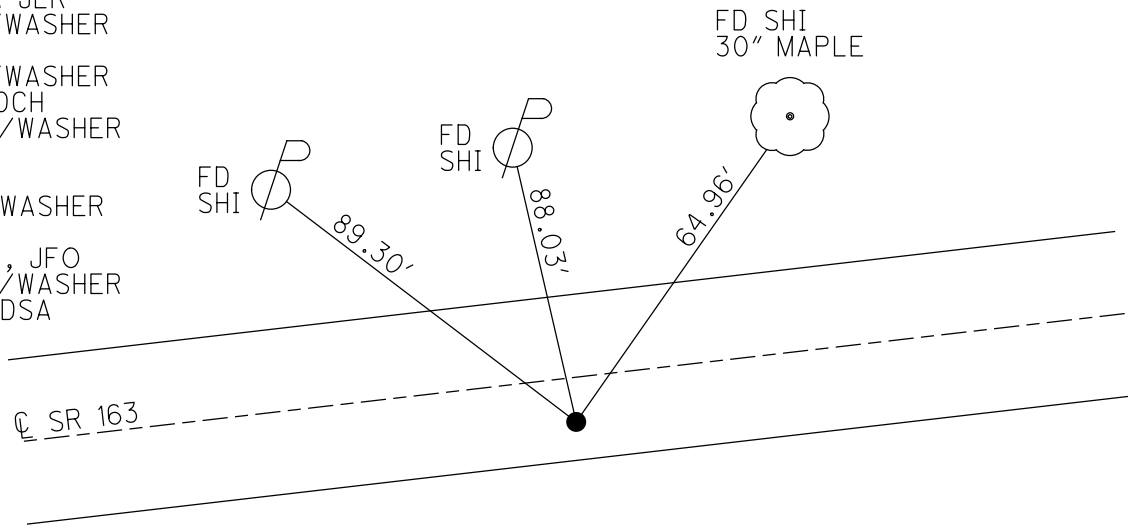
GEOID: NAVD88 2012A

GRID: NORTHING: 676268.425

EASTING: 1868375.136



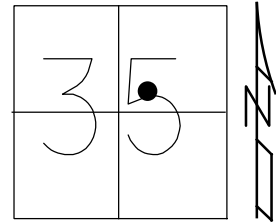
RECORD: P.I.
 $\Delta = 5^\circ 21' \text{ LT}$
 STA. 149+29.00
 FD P.K./WASHER
 ATOP P.K./WASHER
 9/16/85
 FD P.K./WASHER
 6/11/93, R. CHENEY
 SET P.K./WASHER
 7/13/93, JLR
 FD P.K./WASHER
 11/9/00
 FD P.K./WASHER
 9/6/11, DCH
 SET MAG/WASHER
 REFG128
 9/18/18
 FD MAG/WASHER
 2/8/19
 9/30/20, JFO
 SET MAG/WASHER
 9/7/21, DSA



O.D.O.T. DISTRICT 2 SURVEY OFFICE (USE ONLY)

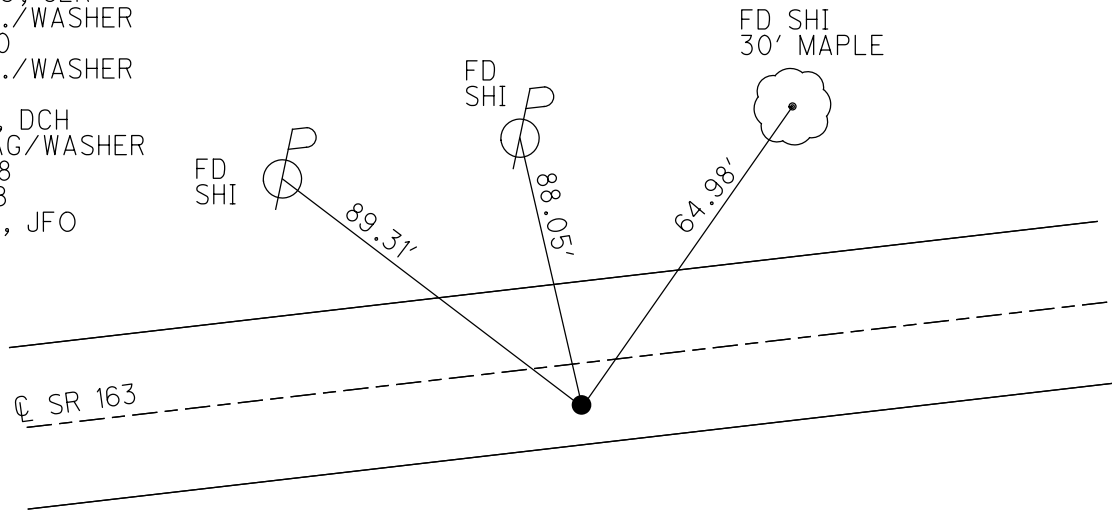
PERSONNEL _____ REFERENCE NO. 128 G SHEET 11 OF 17
 NOTES RHOADES DATE 9/18/18 ROUTE SR 163
 H.C. O'DONNELL WEATHER SUNNY COUNTY OTTAWA
 R.C. MILLER TEMP. 75° TOWNSHIP PORTAGE
 DWG BY NIESE PID 107060 SECTION 35
 T 7 N R 17 E

TYPE MONUMENT MAG/WASHER
 ON SURFACE - ~~BELOW~~ ON
 OFFSET 6.0' LT : RT
6.0' TO RT EDGE PAVEMENT
 STATION: 1552+23



HORZ. DATUM: NAD83(2011) GEOID: 2012A
 GRID: NORTHING: 676268.425 EASTING: 1868375.136

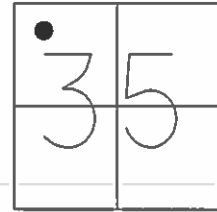
RECORD: P.I.
 $\Delta = 5^\circ 21' \text{ LT}$
 STA. 149+29.00
 FD P.K./WASHER
 ATOP P.K./WASHER
 9/16/85
 FD P.K./WASHER
 6/11/93, R. CHENEY
 SET P.K./WASHER
 7/13/93, JLR
 FD P.K./WASHER
 11/9/00
 FD P.K./WASHER
 REF176
 9/6/11, DCH
 SET MAG/WASHER
 REFG128
 9/18/18
 2/8/19, JFO



O.D.O.T. DISTRICT 2 SURVEY OFFICE (USE ONLY)

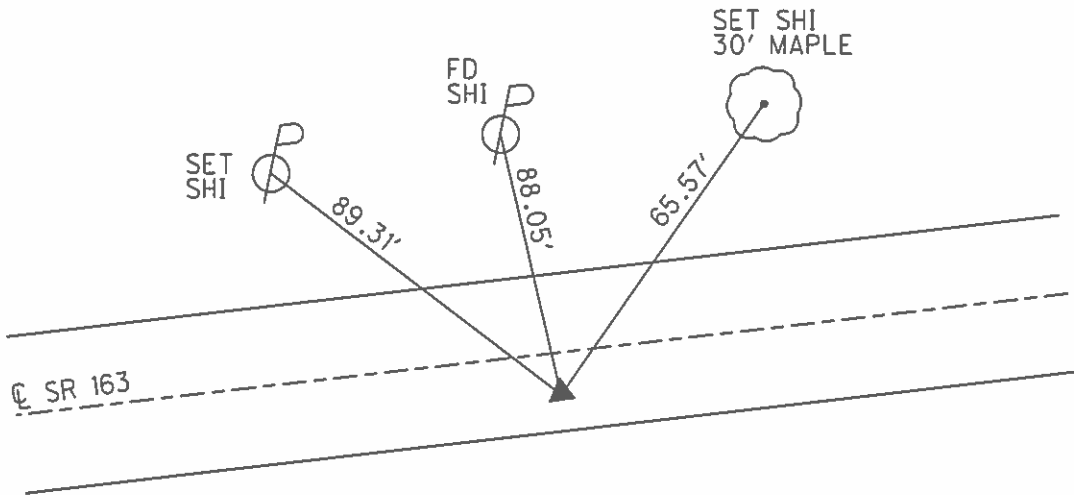
PERSONNEL	REFERENCE NO. <u>128 G</u>	SHEET <u>11</u> OF <u>18</u>
NOTES <u>CHENEY</u>	DATE <u>6/11/93</u>	ROUTE <u>SR 163</u>
H.C. <u>RIPPLE</u>	WEATHER <u>SUNNY</u>	COUNTY <u>OTTAWA</u>
R.C. <u>BARBOUR</u>	TEMP. <u>75°</u>	TOWNSHIP <u>PORTAGE</u>
<u>GEYMAN</u>		SECTION <u>35</u>
		T <u>7</u> N R <u>17</u> E

TYPE MONUMENT P.K./WASHER
 ON SURFACE - ~~BELOW~~ ON
~~LEFT~~ - Q PAV'T - RIGHT 6'
6' TO RT EDGE PAVEMENT
 S.L.M. 1552+23



GRID: NORTHING: 676268.331 EASTING: 1868374.969

RECORD: P.I.
 $\Delta = 5^\circ 21' \text{ LT}$
 STA. 149+29.00
 P.K./WASHER ATOP
 P.K./WASHER
 9/16/85
 SET P.K./WASHER
 7/13/93, JLR
 FD P.K./WASHER
 GPS, REF176
 9/6/11, DCH

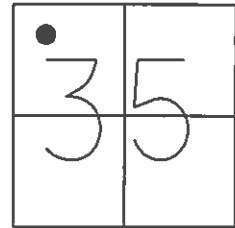


PREVENTIVE MAINTENANCE
 MICROSURFACED 2000
 EXISTING POINT UNCOVERED
 DATE: 11/9/2000

O.D.O.T. DISTRICT 2 SURVEY OFFICE (USE ONLY)

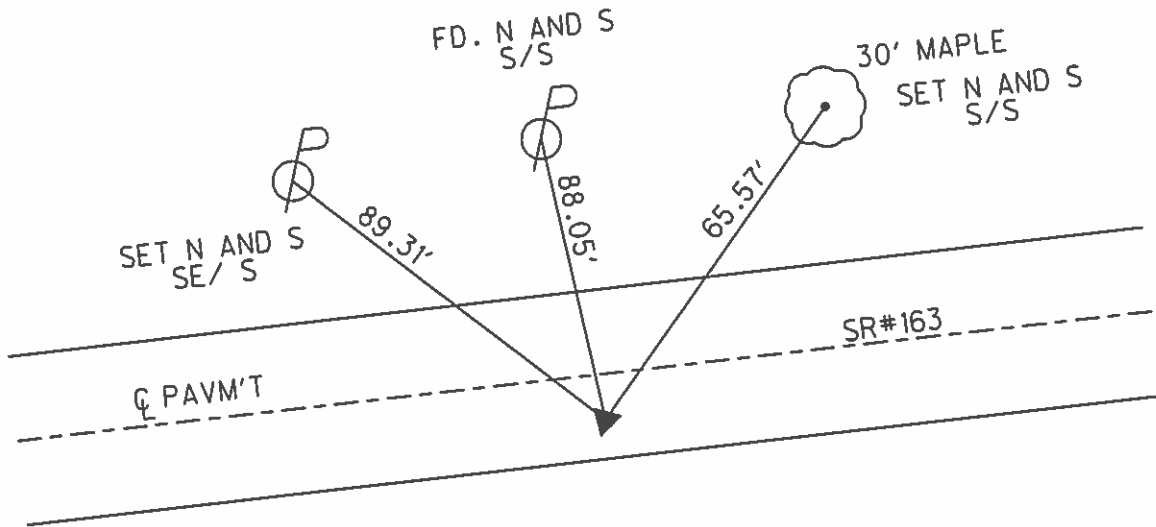
PERSONNEL _____ REFERENCE NO. 128 G SHEET 11 OF 18
 NOTES CHENEY DATE 6-11-1993 ROUTE SR 163
 H.C. RIPPLE WEATHER SUNNY COUNTY OTTAWA
 R.C. BARBOUR TEMP. 75° TOWNSHIP PORTAGE
GEYMAN SECTION 35
 T 7 N R 17 E

TYPE MONUMENT FD. P.K. AND WASHER
 ON SURFACE - ~~BELOW~~ ON
~~LEFT~~ - CL PAV'T - RIGHT 6'
6' TO RT. EDGE PAVEMENT
 S.L.M. 1552+23
 GRID: NORTHING: 676268.331 EASTING: 1868374.969



RECORD: 9-16-1985
 P.I. Δ = 05° 21' LT.
 149+29.00
 P.K. AND WASHER ATOP P.K. AND WASHER

NOTE:
 SET P.K. AND WASHER
 7-13-1993 J.L.R.
 FD P.K./WASHER
 GPS, REF176
 9/6/11, DCH



PREVENTIVE MAINTENANCE
 MICROSURFACED 2000
 EXISTING POINT UNCOVERED
 DATE: 11-9-2000

O.D.O.T. DISTRICT 2 SURVEY OFFICE

PERSONNEL

REFERENCE NO. 1286

SHEET 15 OF 23

NOTES CHENEY

H.C. RIPPLE

R.C. BARBOUR

GEYMAN

DATE 6-11-1993

WEATHER Sunny

TEMP. 75°

ROUTE SR#163

COUNTY OTTAWA

TOWNSHIP Portage

SECTION 35

T7 N R 17 E

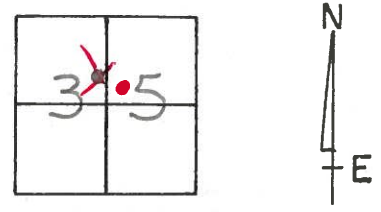
TYPE MONUMENT Fd. P.K. & Washer

ON SURFACE - ~~BELOW~~ ON SURFACE

~~LEFT - C. PAV'T.~~ - RIGHT 6' RT. & PAV'T.

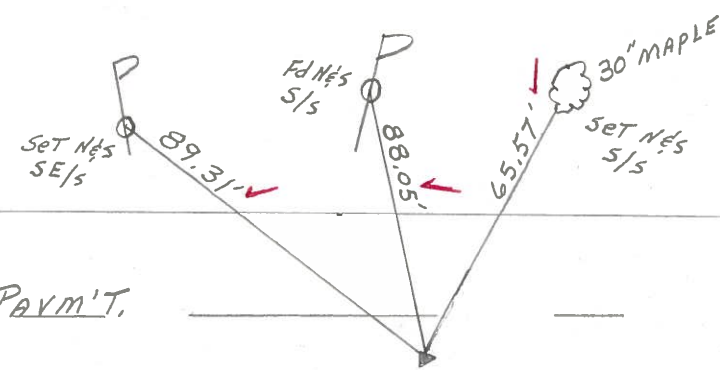
6' TO RT. EDGE PAVEMENT

S.L.M. 1552+23



Record: 9-16-1985
 P.I. $\Delta = 05^\circ 21' \text{ LT.}$
149+29.00
 P.K. & Washer ATOP P.K. & Washer

NOTE: SET P.K. & Washer
 7-13-1993 J.L.R.



Preventive Maintenance
 Microsurfaced 2000
 Existing Point Uncovered
 Date 11-9-2000

O.D.O.T. DISTRICT 2 SURVEY OFFICE

PERSONNEL

REFERENCE NO. 127

SHEET 15 OF

NOTES CRONIN

H.C. RIPPLE

R.C. BARBOUR

GEYMAN

DATE 9/16/85

WEATHER SUNNY

TEMP. 68°

ROUTE #163

COUNTY OTTAWA

TOWNSHIP PORTAGE

SECTION 35

T 7 N R 17 E

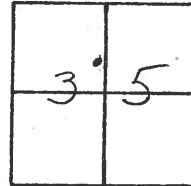
TYPE MONUMENT P.K. WASHER AT OP P.K. (HEAD OFF)

ON SURFACE - BELOW ON SURFACE

LEFT- & PAW'T. - RIGHT 6' RT. & PAW'T.

TO EDGE PAVEMENT

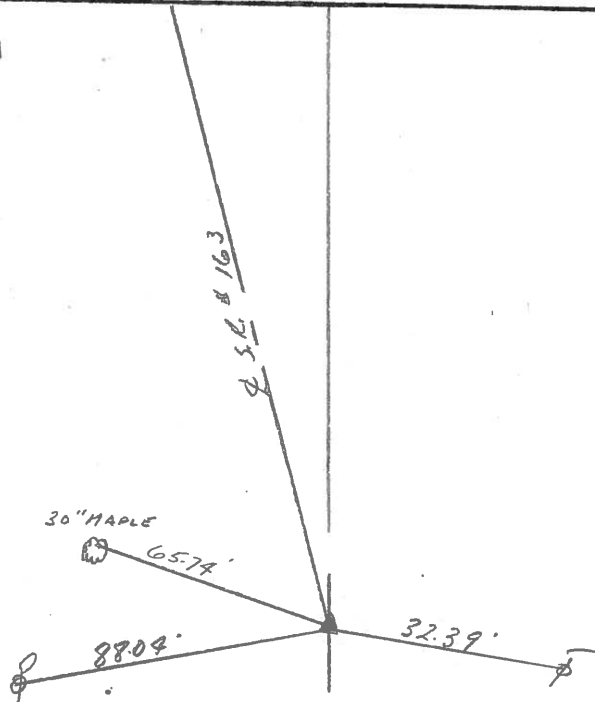
S.L.M.



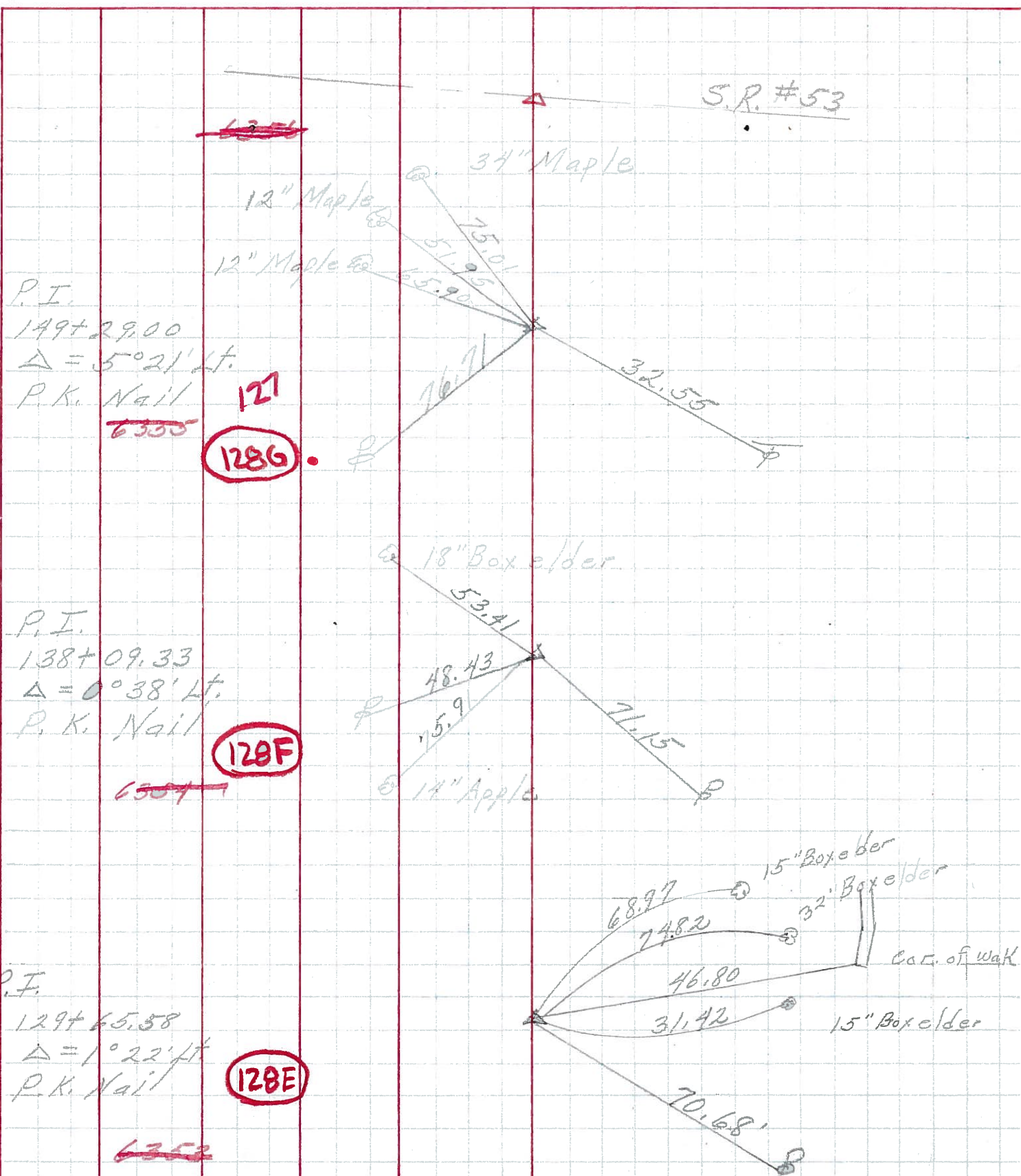
128G



P.I. Δ = 05°21'41"
149+28.00



PERSONNEL	TITLE	PERSONNEL	TITLE	COUNTY	DATE
<u>Schneider</u>				<u>Ottawa</u>	<u>3-2-70</u>
<u>Mosser</u>				S. R. <u>163</u>	WEATHER <u>Cloudy</u>
<u>Potts</u>				SEC. <u>Port Clinton - East</u>	TEMP <u>35°</u>
<u>Ripple</u>					
DESCRIPTION <u>Ties for control Points</u>				JOB NO.	



PERSONNEL	TITLE	PERSONNEL	TITLE	COUNTY	Ottawa	DATE	9-9-68	
Schneider		Potts		S. R.	163	WEATHER	Fair	
Mosser				SEC.	Port Clint Eas	TEMP.	82°	
Barbour								
Redding								
DESCRIPTION	Ties for Control Points						JOB NO.	
	LEFT	CENTER LINE	RIGHT					

