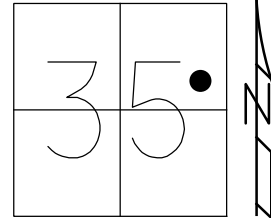


O.D.O.T. DISTRICT 2 SURVEY OFFICE (USE ONLY)

PERSONNEL \_\_\_\_\_ REFERENCE NO. 129 SHEET 12 OF 17  
 NOTES VAN DUSEN DATE 9/8/00 ROUTE SR 163  
 H.C. ROUSOS WEATHER CLOUDY COUNTY OTTAWA  
 R.C. BROWN TEMP. 72° TOWNSHIP PORTAGE  
 DWG BY NIESE PID 107060 SECTION 35  
 T 7 N R 17 E

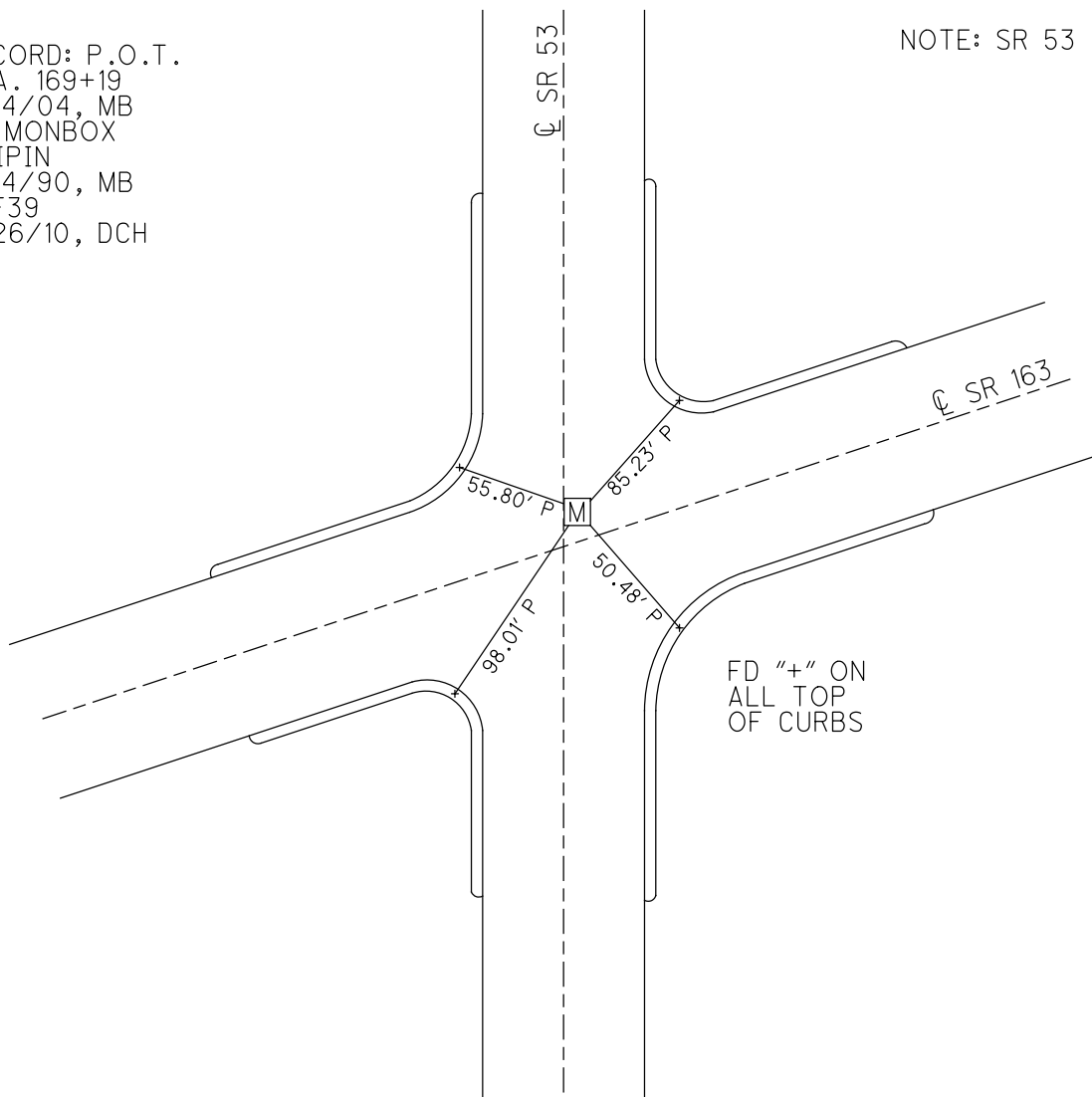
TYPE MONUMENT MONBOX W/IPIN  
 ON SURFACE - ~~BELOW~~ ON  
 OFFSET  $\varnothing$  PAVEMENT 0.7' ~~LT~~ : RT  
- TO - EDGE PAVEMENT  
 STATION: 1572+18



HORZ.DATUM: NAD83(2011) GEOID: 2012A  
 GRID: NORTHING: 676841.856 EASTING: 1870280.230

RECORD: P.O.T.  
 STA. 169+19  
 6/14/04, MB  
 FD MONBOX  
 W/IPIN  
 9/14/90, MB  
 REF39  
 5/26/10, DCH

NOTE: SR 53 REF36

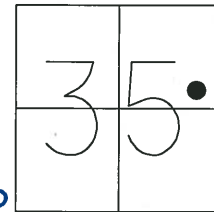


FD "+\" ON  
 ALL TOP  
 OF CURBS

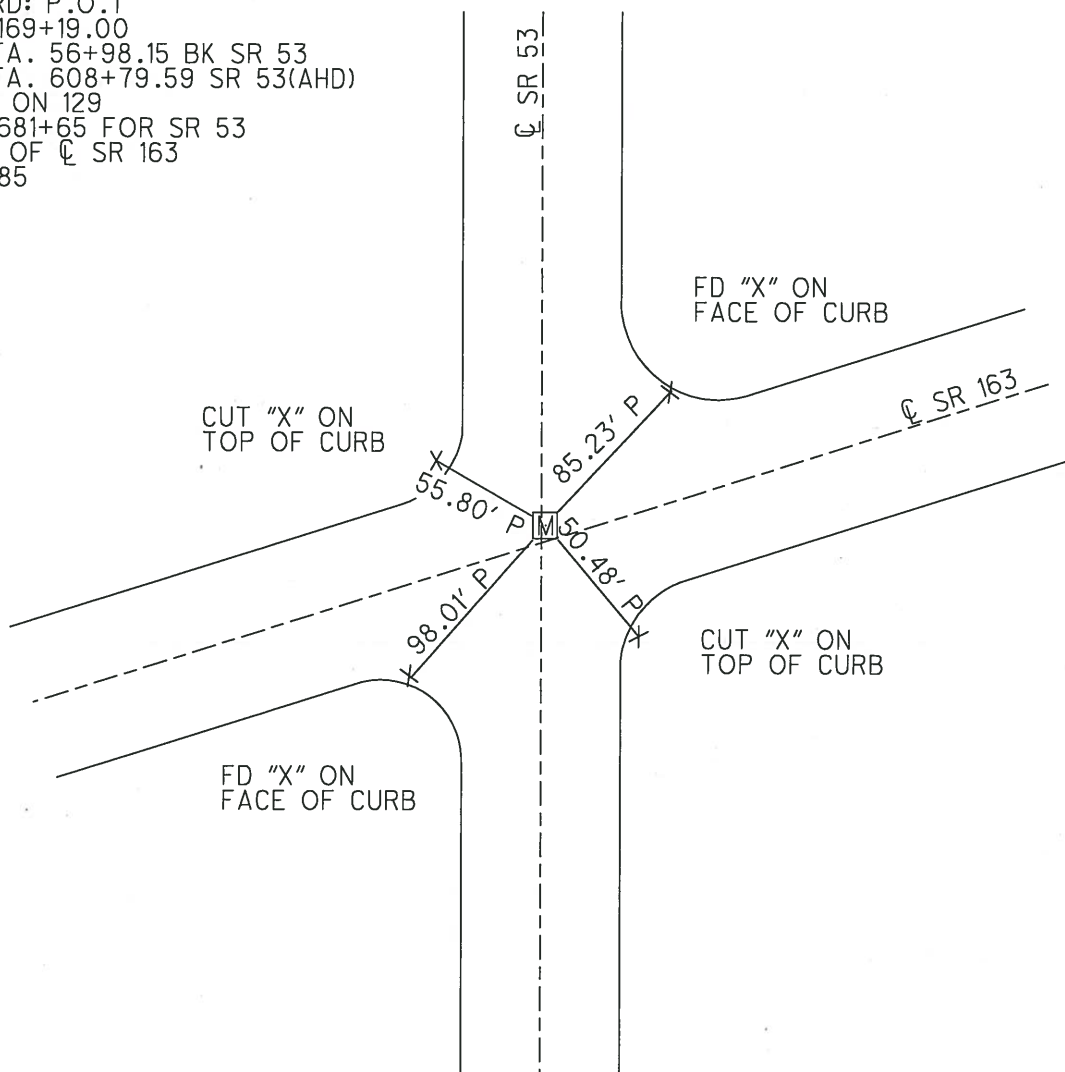
O.D.O.T. DISTRICT 2 SURVEY OFFICE (USE ONLY)

|                        |                          |                              |
|------------------------|--------------------------|------------------------------|
| PERSONNEL              | REFERENCE NO. <u>129</u> | SHEET <u>12</u> OF <u>18</u> |
| NOTES <u>BARNHISEL</u> | DATE <u>9/14/90</u>      | ROUTE <u>SR 163</u>          |
| H.C. <u>BARNHISEL</u>  | WEATHER <u>CLOUDY</u>    | COUNTY <u>OTTAWA</u>         |
| R.C. <u>BARBOUR</u>    | TEMP. <u>76°</u>         | TOWNSHIP <u>PORTAGE</u>      |
| <u>RIPPLE</u>          |                          | SECTION <u>35</u>            |
|                        |                          | T <u>7</u> N R <u>17</u> E   |

TYPE MONUMENT MON BOX W/IPIN  
 ON SURFACE - BELOW ON  
~~LEFT~~ - ☉ PAV'T - RIGHT 0.7'  
- TO - EDGE PAVEMENT  
 S.L.M. 1572+18  
 GRID: NORTHING: 676841.856 EASTING: 1870280.230



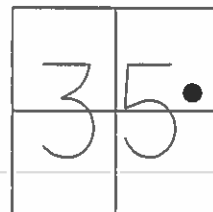
RECORD: P.O.T  
 STA. 169+19.00  
 P.I. STA. 56+98.15 BK SR 53  
 P.I. STA. 608+79.59 SR 53(AHD)  
 SR 53 ON 129  
 STA. 681+65 FOR SR 53  
 1.5' N OF ☉ SR 163  
 9/16/85



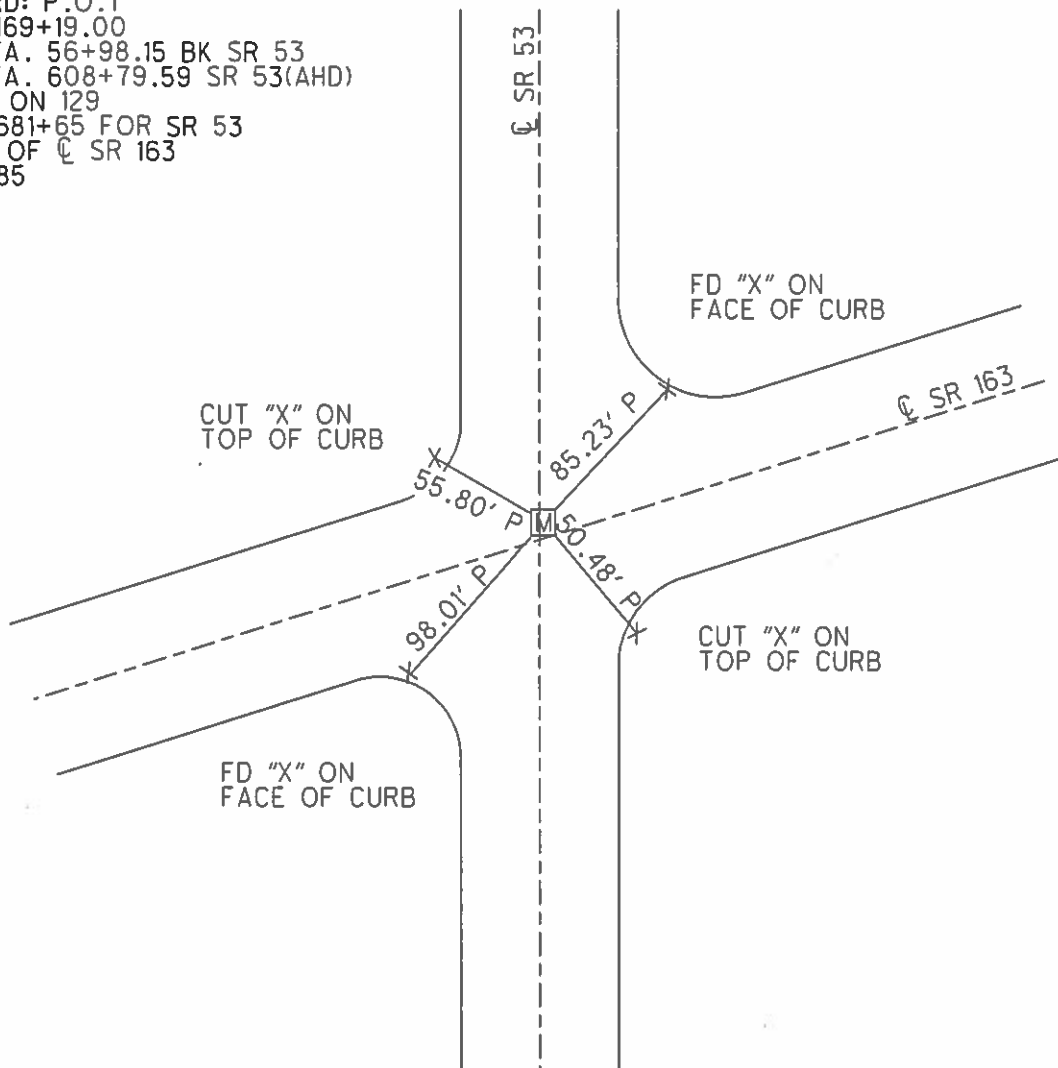
O.D.O.T. DISTRICT 2 SURVEY OFFICE (USE ONLY)

|                        |                          |                              |
|------------------------|--------------------------|------------------------------|
| PERSONNEL              | REFERENCE NO. <u>129</u> | SHEET <u>12</u> OF <u>18</u> |
| NOTES <u>BARNHISEL</u> | DATE <u>9/14/90</u>      | ROUTE <u>SR 163</u>          |
| H.C. <u>BARNHISEL</u>  | WEATHER <u>CLOUDY</u>    | COUNTY <u>OTTAWA</u>         |
| R.C. <u>BARBOUR</u>    | TEMP. <u>76°</u>         | TOWNSHIP <u>PORTAGE</u>      |
| <u>RIPPLE</u>          |                          | SECTION <u>35</u>            |
|                        |                          | T. <u>7</u> N R. <u>17</u> E |

TYPE MONUMENT MON BOX W/IPIN  
 ON SURFACE - BELOW ON  
~~LEFT~~ - ☉ PAV'T - RIGHT 0.7'  
- TO - EDGE PAVEMENT  
 S.L.M. 1572+18  
 GRID: NORTHING: \_\_\_\_\_ EASTING: \_\_\_\_\_



RECORD: P.O.T  
 STA. 169+19.00  
 P.I. STA. 56+98.15 BK SR 53  
 P.I. STA. 608+79.59 SR 53(AHD)  
 SR 53 ON 129  
 STA. 681+65 FOR SR 53  
 1.5' N OF ☉ SR 163  
 9/16/85



O.D.O.T. DISTRICT 2 SURVEY OFFICE (Use Only)

PERSONNEL

REFERENCE NO. 129

SHEET 12 OF 18

NOTES Barnhisel

DATE 9-14-1990

ROUTE SR 163

H.C. Barnhisel

WEATHER Cloudy

COUNTY OTTAWA

R.C. Barbour

TEMP. 76°

TOWNSHIP PORTAGE

Ripple

SECTION 35

T 7 N R 17 E

TYPE MONUMENT I. Pin in Mon. Box

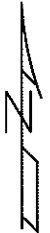
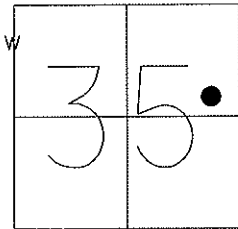
ON SURFACE - BELOW Box at Surface, I.P. is 0.9 Below

~~LEFT~~ - C<sub>L</sub> PAV'T - RIGHT 0.7

TO - EDGE PAVEMENT

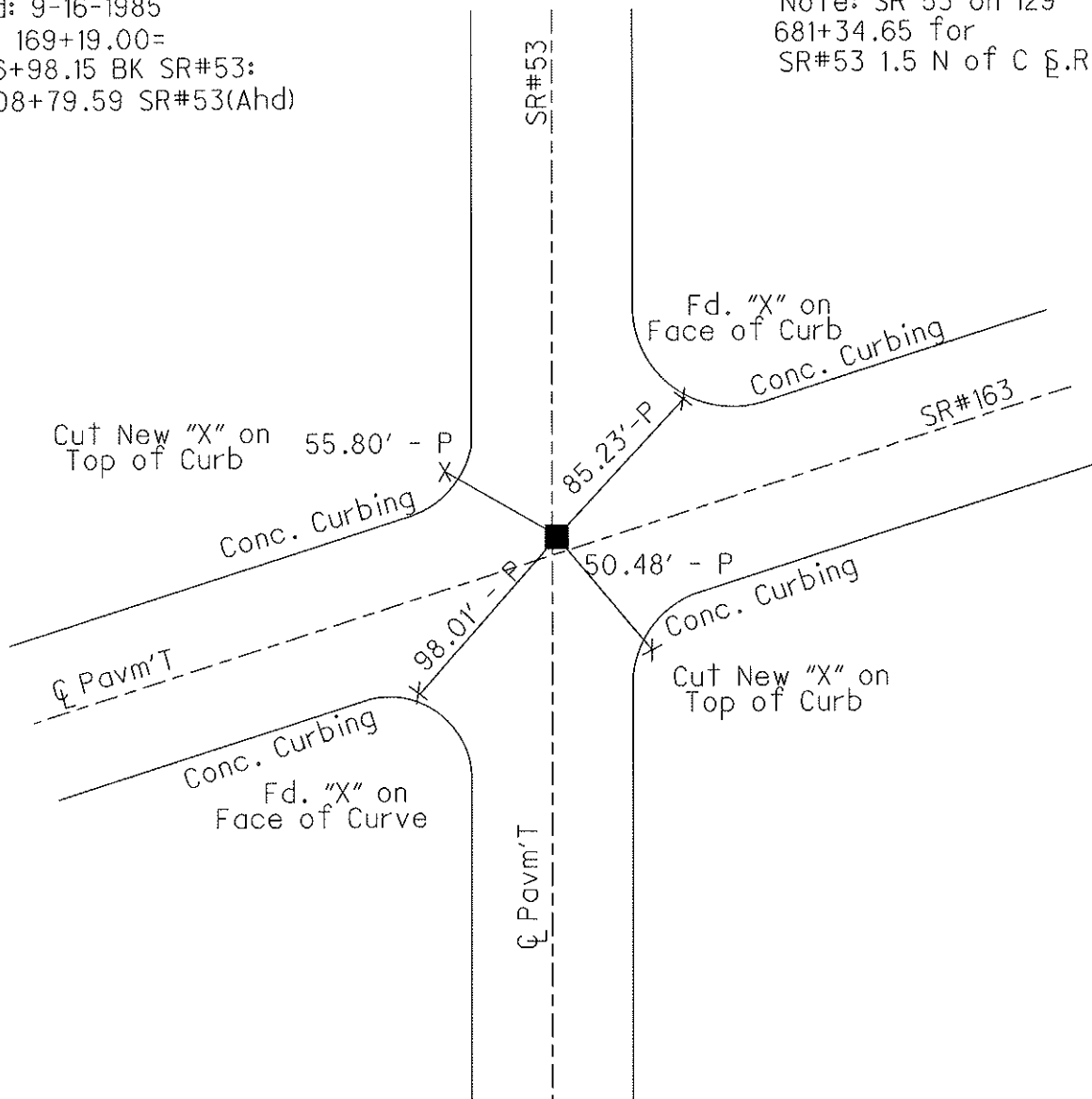
S.L.M. 1572+18

Grid: Northing: \_\_\_\_\_ Easting: \_\_\_\_\_



Record: 9-16-1985  
 P.O.T. 169+19.00=  
 P.I. 56+98.15 BK SR#53:  
 P.I. 608+79.59 SR#53(Ahd)

Note: SR 53 on 129  
 681+34.65 for  
 SR#53 1.5 N of C<sub>L</sub>R 163



O.D.O.T. DISTRICT 2 SURVEY OFFICE (Use Only)

PERSONNEL \_\_\_\_\_

REFERENCE NO. 129

SHEET 13 OF 18

NOTES Cheney

DATE 6-10-1990

ROUTE SR 163

H.C. Ripple

WEATHER Cloudy

COUNTY OTTAWA

R.C. Barbour

TEMP. 80°

TOWNSHIP PORTAGE

Geyman

SECTION 35

T 7 N R 17 E

TYPE MONUMENT Fd. Mon. Box

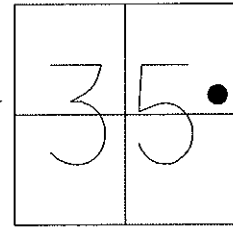
ON SURFACE - ~~BELOW~~ On Surface

~~LEFT~~ - CL PAV'T - RIGHT - CL Pav'T SR.53 and SR.163

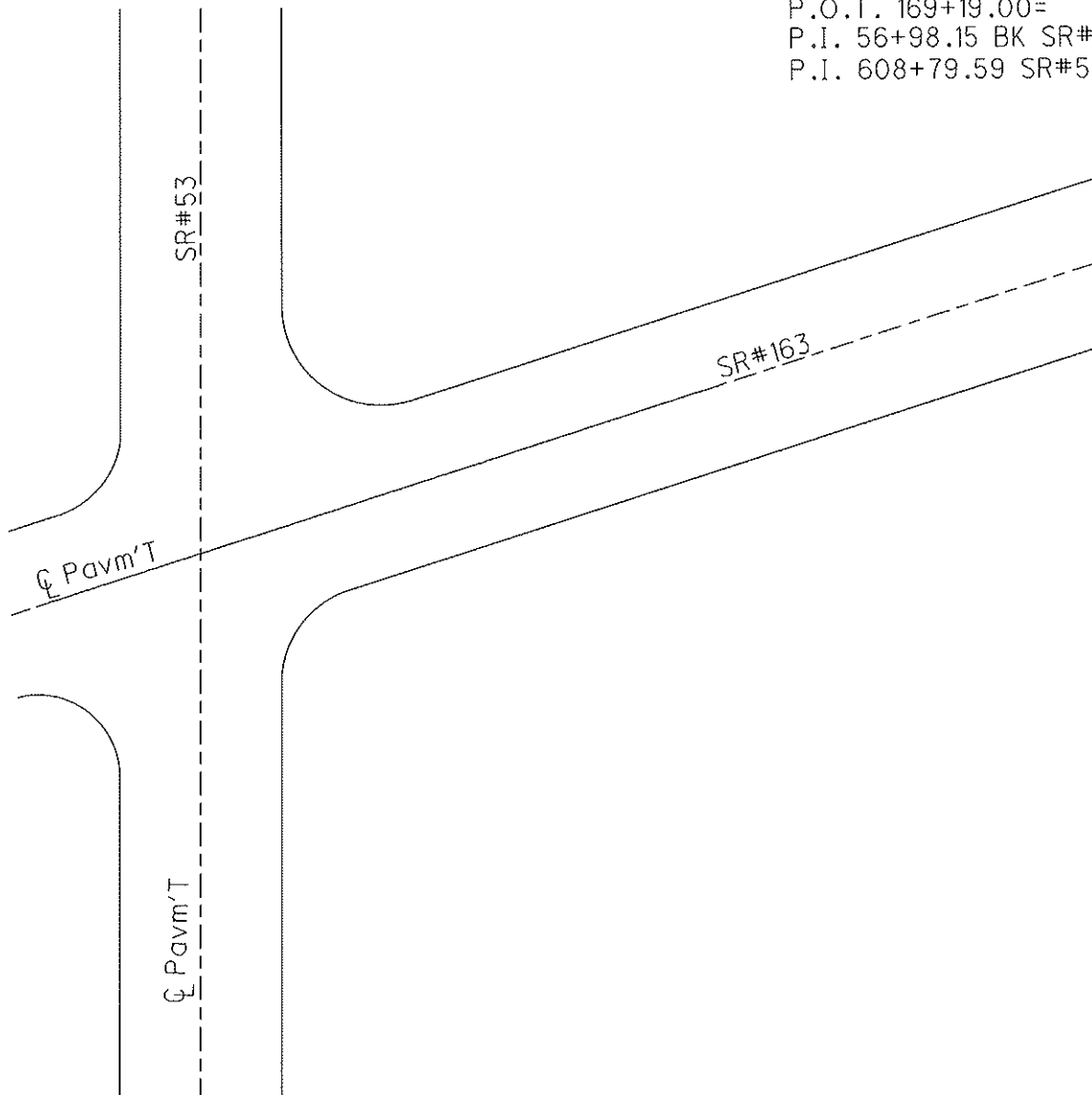
TO EDGE PAVEMENT

S.L.M. 1572+18

Grid: Northing: \_\_\_\_\_ Easting: \_\_\_\_\_



Record: 9-16-1985  
 P.O.T. 169+19.00=  
 P.I. 56+98.15 BK SR#53:  
 P.I. 608+79.59 SR#53(Ahd)



# O.D.O.T. DISTRICT 2 SURVEY OFFICE

PERSONNEL \_\_\_\_\_

REFERENCE NO. 129  
36  
53

SHEET \_\_\_\_\_ OF \_\_\_\_\_

NOTES BAREHISEL

H.C. " " "

R.C. RACBOUR

Ripple

DATE 9-14-95

WEATHER cloudy

TEMP. 17.6°

ROUTE SR 53 163

COUNTY OTTAWIA

TOWNSHIP PORTAGE

SECTION 35

T 7 N R 17 E

TYPE MONUMENT I. PIAL IN PIVOT BOX

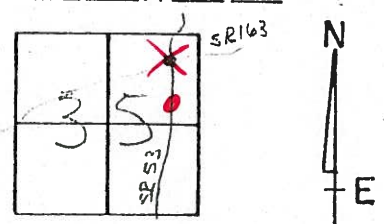
ON SURFACE - BELOW Box At Surface, I.P. IS 0.9 BELOW

LEFT - CL PAV'T. - RIGHT 0.7

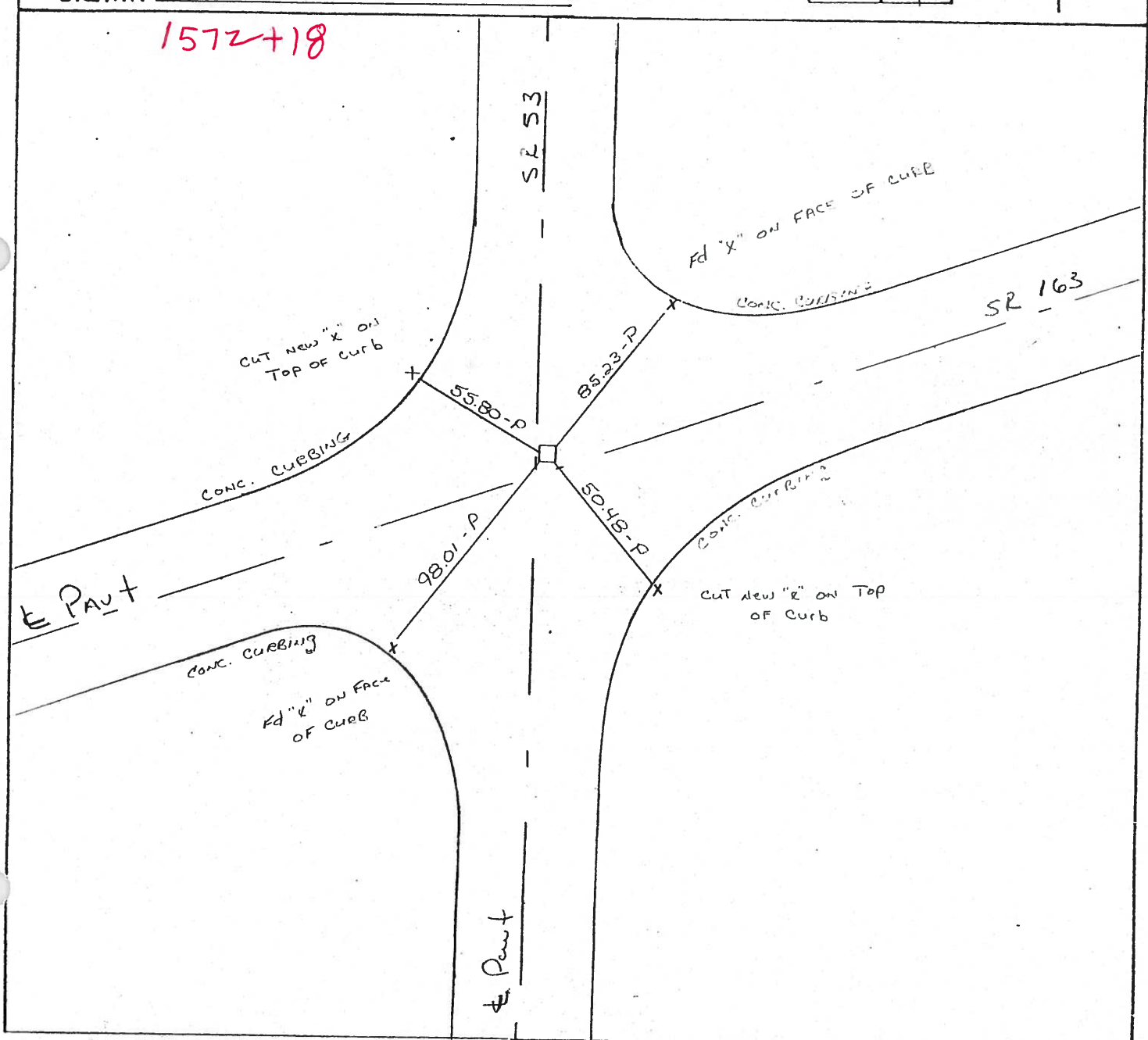
- TO - EDGE PAVEMENT

S.L.M. 681+34.65

1.5 W. OF S.E. 163



1572+18



O.D.O.T. DISTRICT 2 SURVEY OFFICE

PERSONNEL

REFERENCE NO. 129

SHEET 16 OF 23

NOTES CHENEY

H.C. RIPPLE

R.C. BARBOUR

GEYMAN

DATE 6-10-1993

WEATHER Cloudy

TEMP. 80°

ROUTE SR.#163

COUNTY OTTAWA

TOWNSHIP Portage

SECTION 35

T 7 N R 17 E

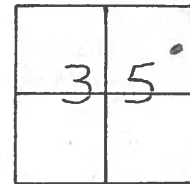
TYPE MONUMENT Fd. Mon. Box

ON SURFACE - ~~BELOW~~ ON SURFACE

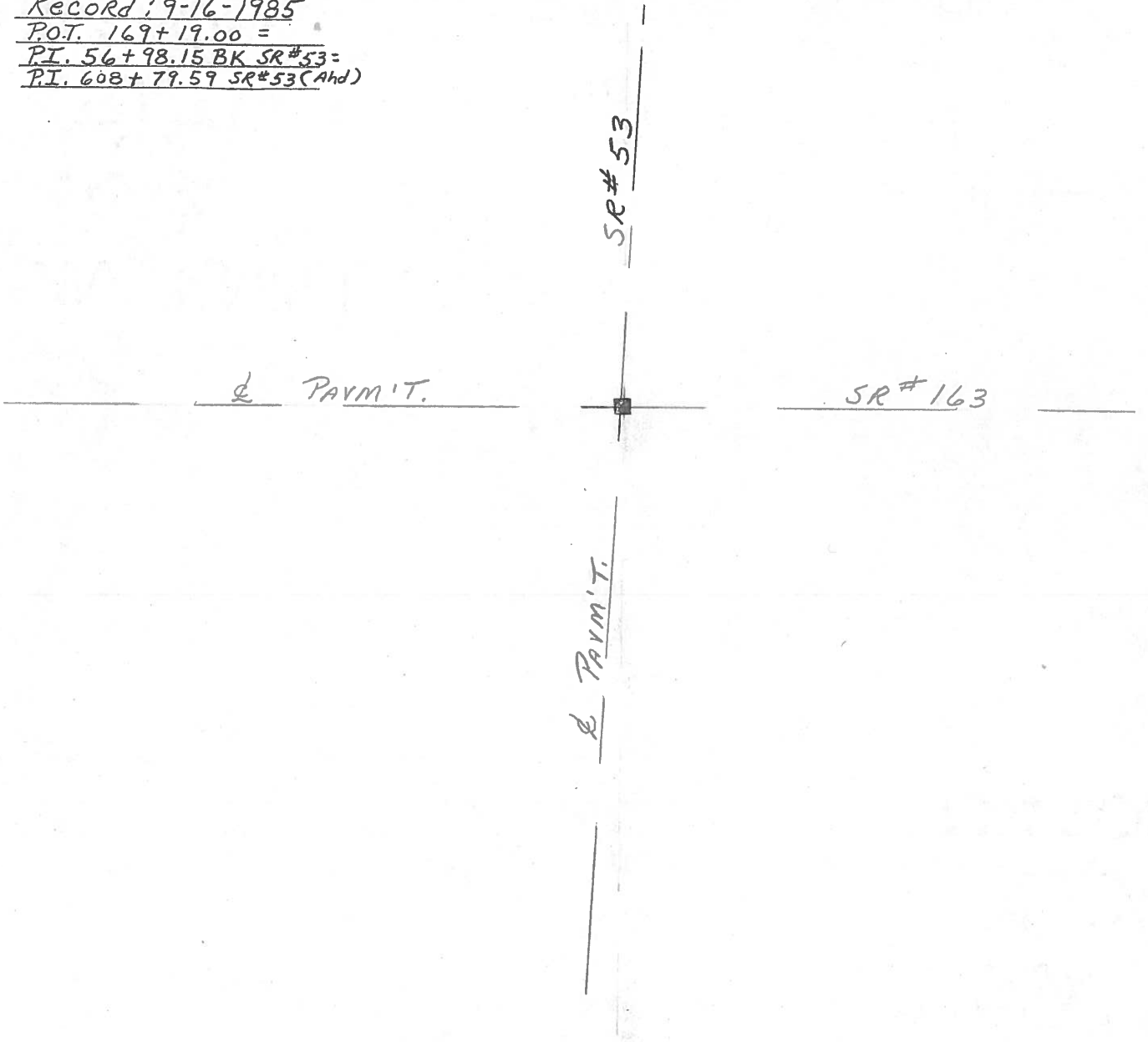
~~LEFT - & PAV'T. - RIGHT~~ & PAV'T. SR#53 & SR.163

- TO - EDGE PAVEMENT

S.L.M. 15 72 + 18



Record: 9-16-1985  
P.O.T. 169+19.00 =  
PI. 56+98.15 BK SR#53 =  
PI. 608+79.59 SR#53 (Ahd)



O.D.O.T. DISTRICT 2 SURVEY OFFICE

PERSONNEL

REFERENCE NO. \_\_\_\_\_

SHEET 16 OF \_\_\_\_\_

NOTES CROWN

H.C. RIPPLE

R.C. BARBOUR

GEYMAN

DATE 9/16/85

WEATHER SUNNY

TEMP. 75°

ROUTE #163

COUNTY OTTAWA

TOWNSHIP PORTAGE

SECTION 35

T 7 N R 17 E

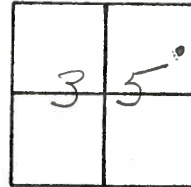
TYPE MONUMENT Mon. Box

ON SURFACE - BELOW ON SURFACE

LEFT - & PAV'T. - RIGHT & PAV'T.

TO \_\_\_\_\_ EDGE PAVEMENT

S.L.M. \_\_\_\_\_



129



S.R. #163

P.O.T. \_\_\_\_\_

169+19.00 =

P.I. 56+98.15 Bk. S.R. #53 =

P.E. 608+79.59 S.R. #53 (Add)

S.R. #53



|             |       |           |       |                         |                     |         |         |
|-------------|-------|-----------|-------|-------------------------|---------------------|---------|---------|
| PERSONNEL   | TITLE | PERSONNEL | TITLE | COUNTY                  | Ottawa              | DATE    | 9-9-68  |
| Schneider   |       | Potts     |       | S. R.                   | 163                 | WEATHER | Fair    |
| Mosser      |       |           |       | SEC.                    | Port Clinton - East | TEMP.   | 82°     |
| Barbour     |       |           |       |                         |                     |         |         |
| Redding     |       |           |       |                         |                     |         |         |
| DESCRIPTION |       |           |       | Ties for Control Points |                     |         |         |
|             |       |           |       | LEFT                    | CENTER LINE         | RIGHT   | JOB NO. |

|  |        |   |
|--|--------|---|
| 202+98.79<br>P.K. Nail   | (131A) | 51.32 S.S.E. F<br>80.38 N.E. Dent in G.M.P. dr. pipe<br>55.08 N.W. Shiner in $\phi$<br>32.73 "X" on <sup>W</sup> end of 12" conc. tile<br>south |
| 6359   |        |   |
| 1st Rd. E. of S.R. #53<br>190+81 $\pm$ Co Rd. south                            | (130A) | did not find  |
| 6358   |        |   |
| 190+67.48<br>$\Delta = 16^{\circ} 44'$ RT.                                     | (130)  | 86.54 S.E. F<br>85.60 N.E. 18" walnut<br>98.08 S. tacked hub in fence line  |
| 6357   |        |   |
| P.K. Nail<br>169+15 S.R. #163<br>608+79.58 S.R. 53 Abd.<br>56+98.15 S.R. 53 BK | (129)  |   |
| 6356   |        |   |
| P.I.<br>149+29.00<br>$\Delta = 5^{\circ} 21'$ Lt.<br>P.K. Nail                 | (128G) |   |
| 6355   |        |   |