

O.D.O.T. DISTRICT 2 SURVEY OFFICE (USE ONLY)

PERSONNEL

REFERENCE NO. 129 B

SHEET 14 OF 17

NOTES CHENEY DATE 6/10/93
 H.C. RIPPLE WEATHER CLOUDY
 R.C. BARBOUR TEMP. 80°
GEYMAN

ROUTE SR 163
 COUNTY OTTAWA
 TOWNSHIP PORTAGE
 SECTION 35

DWG BY NIESE PID 107060

T 7 N R 17 E

TYPE MONUMENT P.K./WASHER

ON SURFACE - ~~BELOW~~ ON

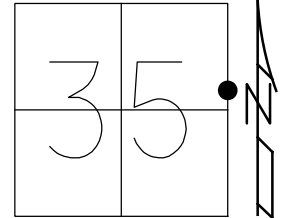
OFFSET ☑ PAVEMENT ON _____ LT : RT

23.7' TO RT EDGE PAVEMENT

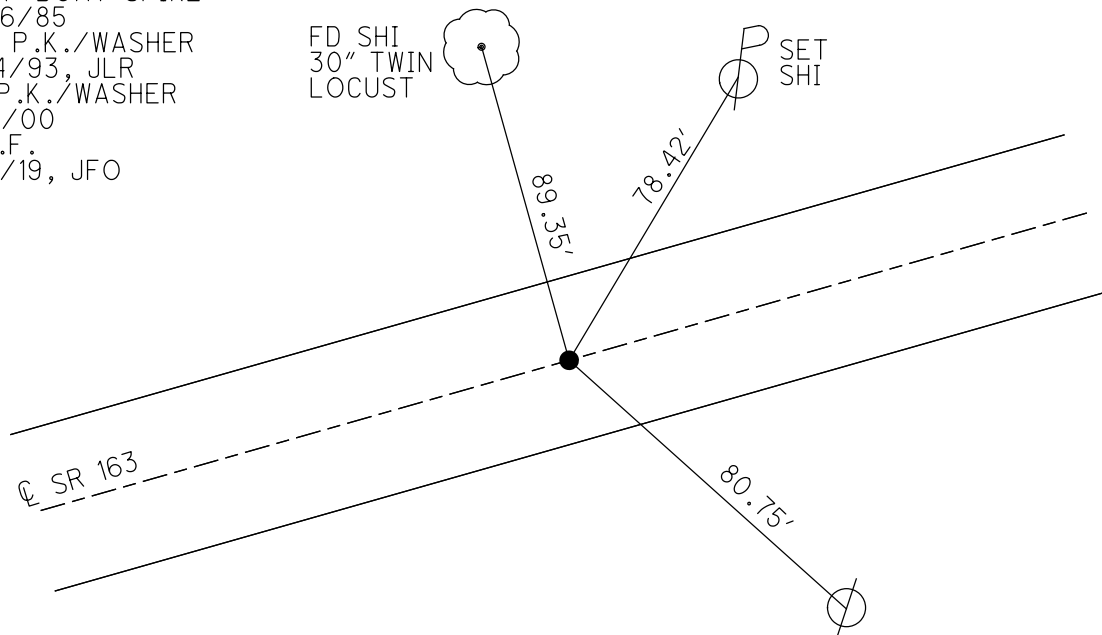
STATION: 1581+17

HORZ. DATUM: _____ - GEOID: _____ -

GRID: NORTHING: _____ - EASTING: _____ -



RECORD: P.C.
 STA. 178+16.63
 P.K./WASHER
 ATOP BOAT SPIKE
 9/26/85
 SET P.K./WASHER
 7/14/93, JLR
 FD P.K./WASHER
 11/9/00
 D.N.F.
 4/2/19, JFO

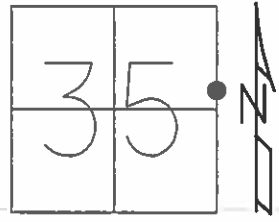


N.W. COR. CONC BASE
 LIGHT POLE @ WALMART
 PARKING LOT
 0.5' DOWN FROM
 TOP OF CONC

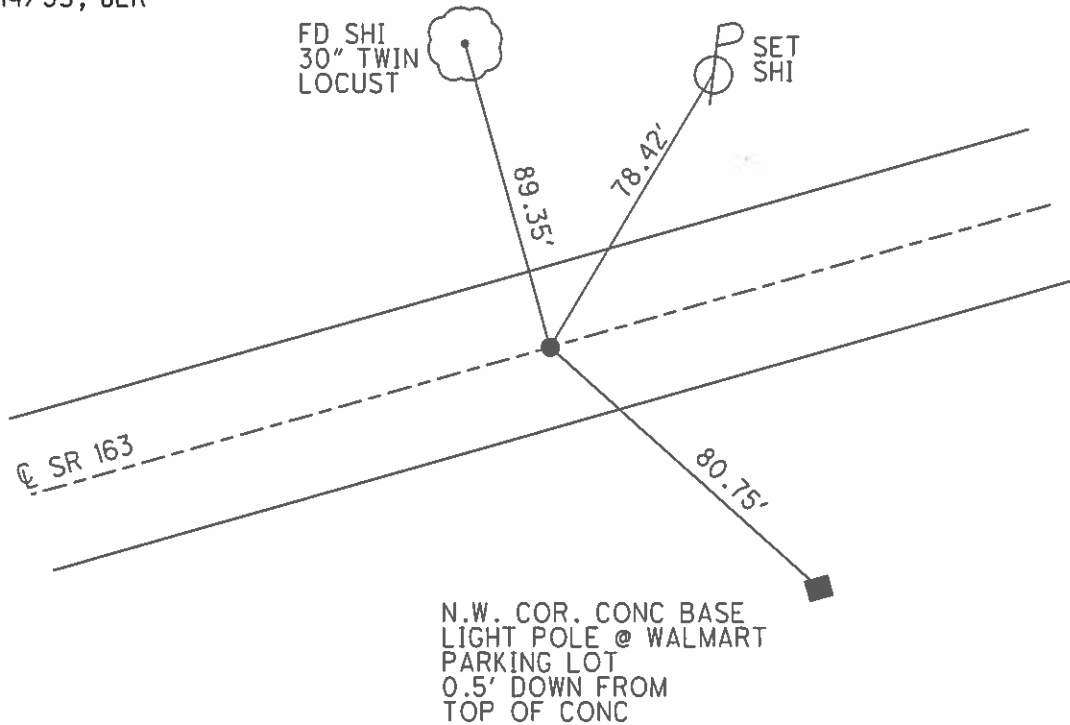
O.D.O.T. DISTRICT 2 SURVEY OFFICE (USE ONLY)

PERSONNEL _____ REFERENCE NO. 129 B SHEET 15 OF 18
 NOTES CHENEY DATE 6/10/93 ROUTE SR 163
 H.C. RIPPLE WEATHER CLOUDY COUNTY OTTAWA
 R.C. BARBOUR TEMP. 80° TOWNSHIP PORTAGE
GEYMAN SECTION 35
 T 7 N R 17 E

TYPE MONUMENT P.K./WASHER
 ON SURFACE - ~~BELOW~~ ON
 LEFT - ☉ PAV'T - RIGHT ON
23.7 TO RT EDGE PAVEMENT
 S.L.M. 1581+17
 GRID: NORTHING: _____ EASTING: _____



RECORD: M.P.C
 STA. 178+16.63
 P.K./WASHER ATOP
 BOAT SPIKE
 9/26/85
 SET P.K./WASHER
 7/14/93, JLR



PREVENTIVE MAINTENANCE
 MICROSURFACED 2000
 EXISTING POINT UNCOVERED
 DATE: 11/9/2000

O.D.O.T. DISTRICT 2 SURVEY OFFICE (Use Only)

PERSONNEL _____

REFERENCE NO. 129 B

SHEET 15 OF 18

NOTES Cheney

DATE 6-10-1993

ROUTE SR 163

H.C. Ripple

WEATHER Cloudy

COUNTY OTTAWA

R.C. Barbour

TEMP. 80°

TOWNSHIP PORTAGE

Geyman

SECTION 35

T 7 N R 17 E

TYPE MONUMENT Fd. P.K. and Washer

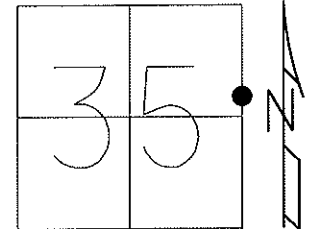
ON SURFACE - ~~BELOW~~ On Surface

~~LEFT~~ - C/P AV'T - RIGHT ℄ Pav'T

23.7 TO RT. EDGE PAVEMENT

S.L.M. 1581+17

Grid: Northing: _____ Easting: _____

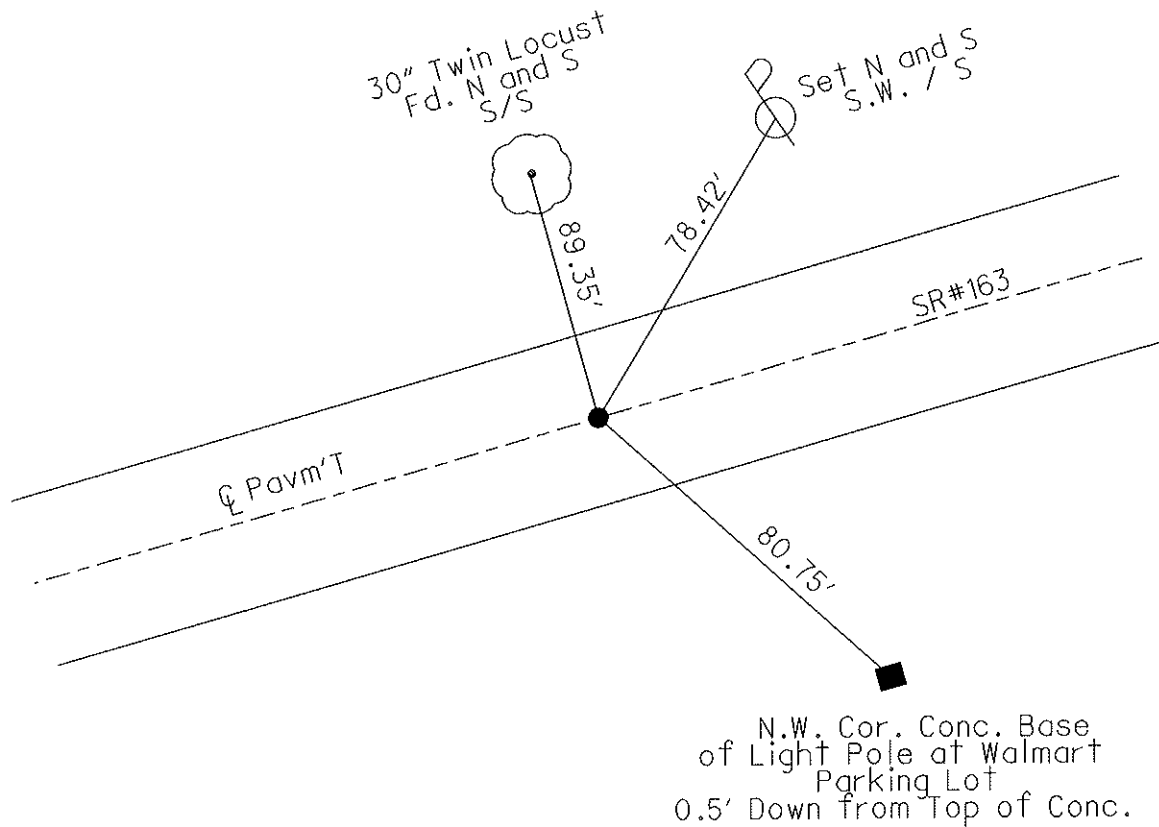


Record: 9-16-1985

M.P.C. 178+16.63

P.K. and Washer Atop Boat Spike

Note: Set. P.K. and Washer
7-14-1993 J.L.R



Preventive Maintenance
Microsurfaced 2000
Existing Point Uncovered
Date: 11-9-2000

O.D.O.T. DISTRICT 2 SURVEY OFFICE

PERSONNEL

REFERENCE NO. 1293

SHEET 18 OF 23

NOTES CHENEY

H.C. RIPPLE

R.C. BARBOUR

GEYMAN

DATE 6-10-1993

WEATHER Cloudy

TEMP. 80°

ROUTE SR#163

COUNTY OTTAWA

TOWNSHIP PORTAGE

SECTION 35

T 7 N R 17 E

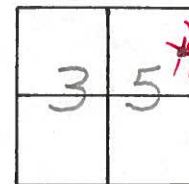
TYPE MONUMENT Fd. P.K. & WASHER

ON SURFACE - ~~BELOW~~ ON SURFACE

LEFT - ~~Q~~ PAV'T. - RIGHT Q PAV'T.

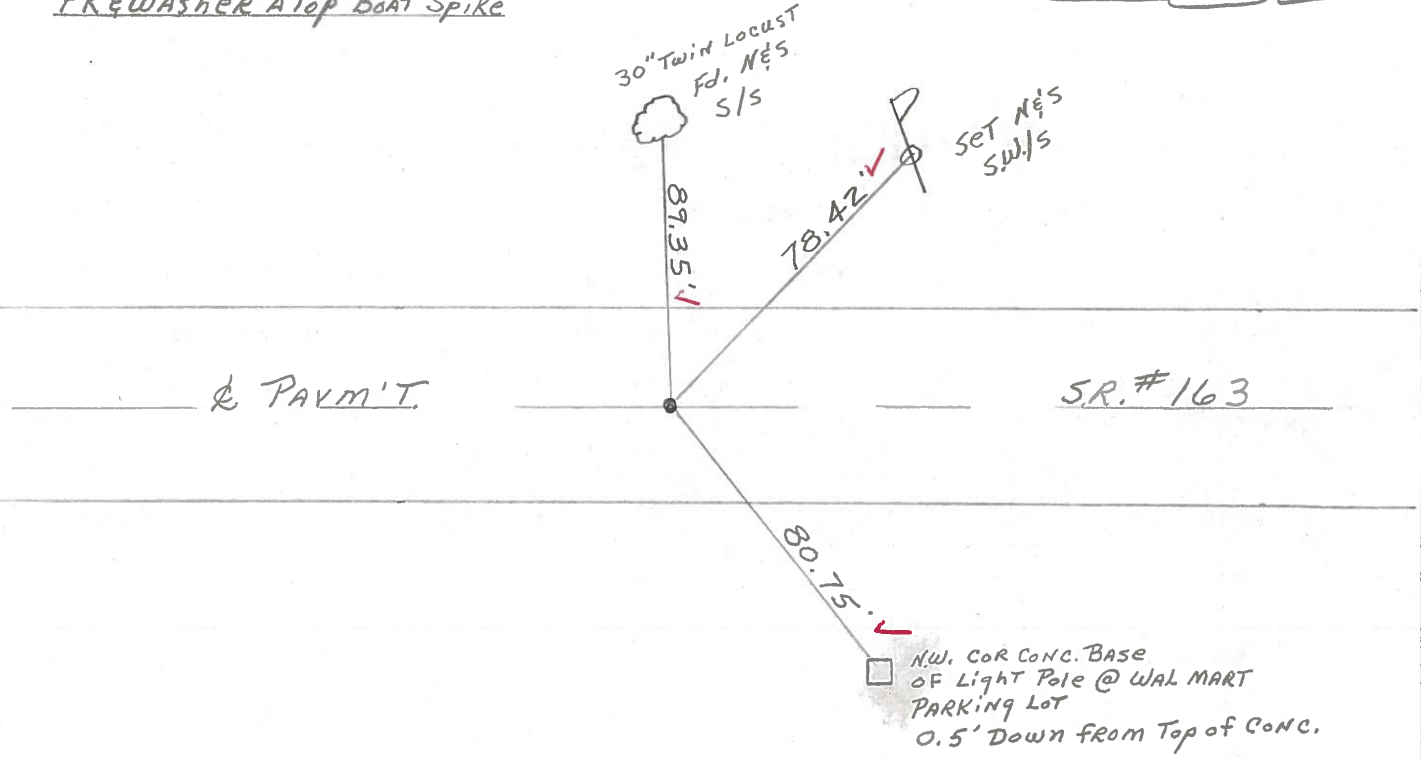
23.7 TO RT. EDGE PAVEMENT

S.L.M. 1581+17



Record: 9-16-1985
M.P.C. 178+16.63
PK & WASHER ATOP BOAT SPIKE

NOTE: SET P.K. & WASHER
7-14-1993 JLR.



Preventive Maintenance
 Microsurfaced 2000
 Existing Point Uncovered
 Date 11-9-2000

O.D.O.T. DISTRICT 2 SURVEY OFFICE

PERSONNEL

REFERENCE NO. _____

SHEET 18 OF _____

NOTES CRONIN

H.C. RIPPLE

R.C. BARBOUR

GEYMAN

DATE 9/16/85

WEATHER SUNNY

TEMP. 75°

ROUTE #163

COUNTY OTTAWA

TOWNSHIP PORTAGE

SECTION 35

T. 7 N R. 17 E

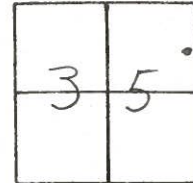
TYPE MONUMENT P.K. WASHER AT TOP BOAT SPIKE

ON SURFACE - BELOW ON SURFACE

LEFT - ☉ PAV'T. - RIGHT ☉ PAV'T.

TO _____ EDGE PAVEMENT

S.L.M. _____



129B



M.P.C. _____

178+16.63

