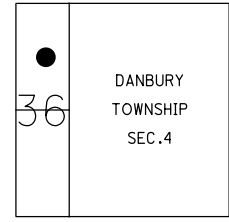


O.D.O.T. DISTRICT 2 SURVEY OFFICE (USE ONLY)

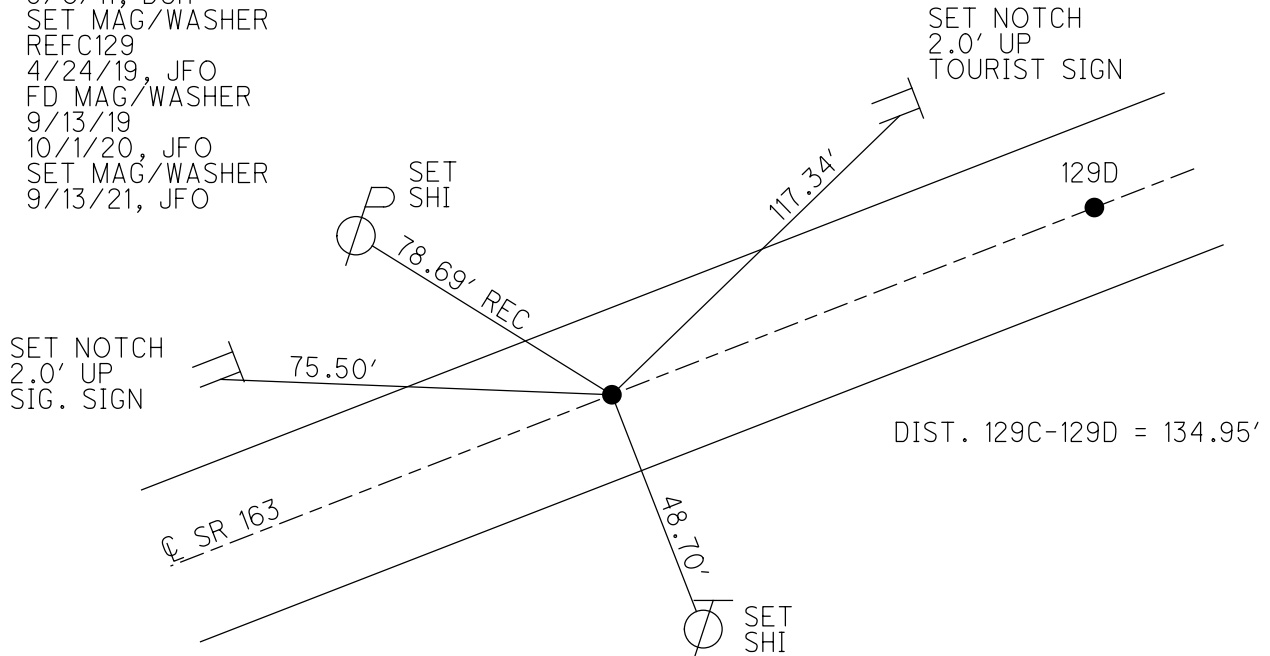
PERSONNEL _____ REFERENCE NO. 129 C SHEET 15 OF 17
 NOTES RHOADES DATE 10/1/20 ROUTE SR 163
 H.C. AUBLE WEATHER SUNNY COUNTY OTTAWA
 R.C. O'DONNELL TEMP. 50° TOWNSHIP PORTAGE
 DWG BY NIESE PID 107919 SECTION 36
 T 7 N R 17 E

TYPE MONUMENT MAG/WASHER
 ON SURFACE - BELOW ON
 OFFSET 0.5' LT : RT
10.5' TO RT EDGE PAVEMENT
 STATION: 1588+11



HORIZ.DATUM: NAD83(2011) GEOID: NAVD88 2012A
 GRID: NORTHING: 677601.206 EASTING: 1871657.891

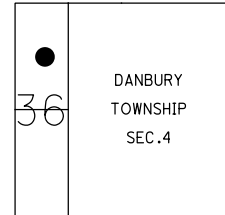
RECORD: P.T.
 STA. 185+11.20
 P.K./WASHER
 ATOP P.K./WASHER
 9/16/85
 FD P.K./WASHER
 6/10/93, JLR
 SET P.K./WASHER
 7/13/93, JLR
 FD P.K./WASHER
 11/9/00
 9/6/11, DCH
 SET MAG/WASHER
 REFC129
 4/24/19, JFO
 FD MAG/WASHER
 9/13/19
 10/1/20, JFO
 SET MAG/WASHER
 9/13/21, JFO



O.D.O.T. DISTRICT 2 SURVEY OFFICE (USE ONLY)

PERSONNEL _____ REFERENCE NO. 129 C SHEET 15 OF 17
 NOTES CHENEY DATE 6/10/93 ROUTE SR 163
 H.C. RIPPLE WEATHER CLOUDY COUNTY OTTAWA
 R.C. BARBOUR TEMP. 80° TOWNSHIP PORTAGE
GEYMAN SECTION 36
 DWG BY NIESE PID 107060 T 7 N R 17 E

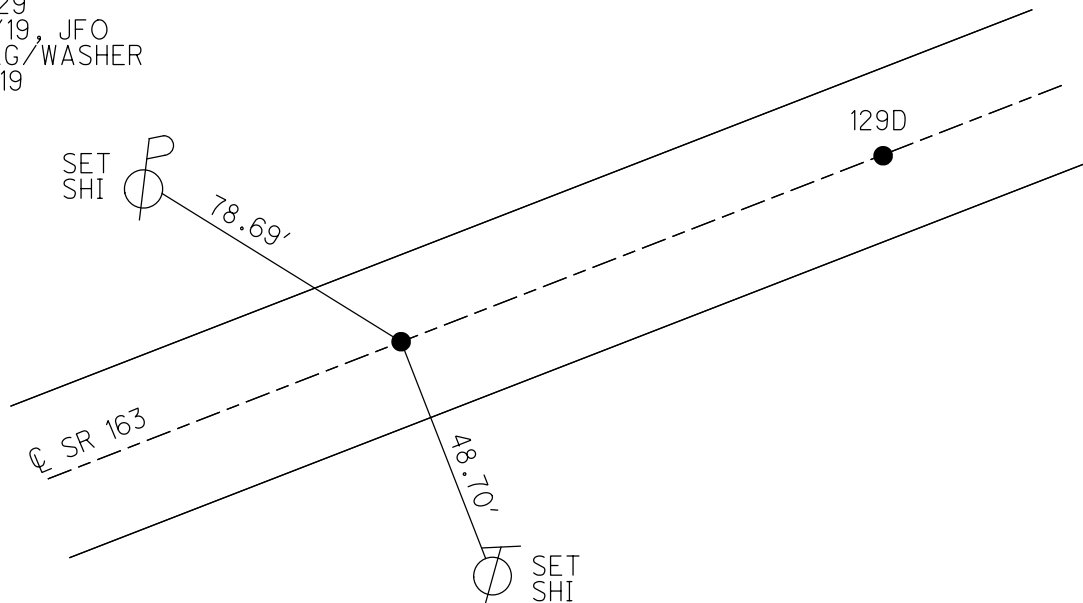
TYPE MONUMENT P.K./WASHER
 ON SURFACE - ~~BELOW~~ ON _____
 OFFSET \varnothing PAVEMENT 0.5' LT : ~~RT~~
10.5' TO RT EDGE PAVEMENT
 STATION: 1588+11



HORZ. DATUM: NAD83(2011) GEOID: 2012A
 GRID: NORTHING: 677601.206 EASTING: 1871657.891

RECORD: P.T.
 STA. 185+11.20
 P.K./WASHER
 ATOP P.K./WASHER
 9/16/85
 FD P.K./WASHER
 11/9/00
 SET P.K./WASHER
 7/13/9, JLR
 FD P.K./WASHER
 REF181
 9/6/11, DCH
 SET MAG/WASHER
 REFC129
 4/24/19, JFO
 FD MAG/WASHER
 9/13/19

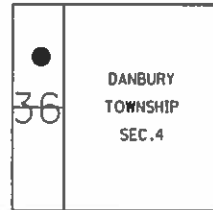
DIST. 129C-129D= 134.99'



O.D.O.T. DISTRICT 2 SURVEY OFFICE (USE ONLY)

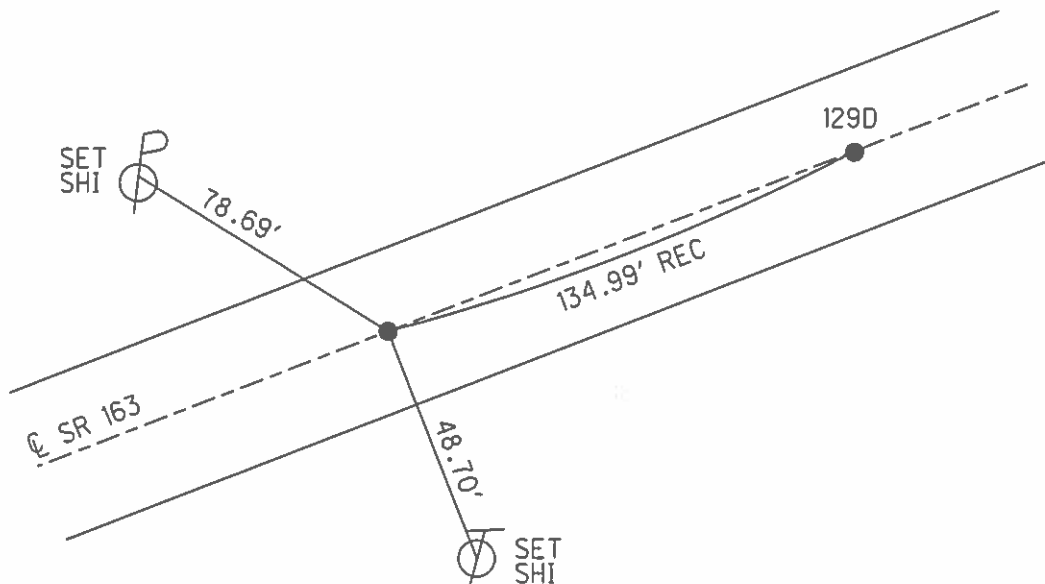
PERSONNEL	REFERENCE NO. <u>129 C</u>	SHEET <u>16</u> OF <u>18</u>
NOTES <u>CHENEY</u>	DATE <u>6/10/93</u>	ROUTE <u>SR 163</u>
H.C. <u>RIPPLE</u>	WEATHER <u>CLOUDY</u>	COUNTY <u>OTTAWA</u>
R.C. <u>BARBOUR</u>	TEMP. <u>80°</u>	TOWNSHIP <u>PORTAGE</u>
<u>GEYMAN</u>		SECTION <u>36</u>
		T <u>7</u> N R <u>17</u> E

TYPE MONUMENT P.K./WASHER
 ON SURFACE - ~~BELOW~~ ON
~~LEFT~~ - Q PAV'T - RIGHT 0.5'
10.5' TO RT EDGE PAVEMENT
 S.L.M. 1588+11



GRID: NORTHING: 677601.181 EASTING: 1871657.724

RECORD: P.T.
 STA. 185+11.20
 P.K./WASHER ATOP
 P.K./WASHER
 9/16/85
 SET P.K./WASHER
 7/13/9, JLR
 FD P.K./WASHER
 GPS, REF181
 9/6/11, DCH



PREVENTIVE MAINTENANCE
 MICROSURFACED 2000
 EXISTING POINT UNCOVERED
 DATE: 11/9/2000

O.D.O.T. DISTRICT 2 SURVEY OFFICE (USE ONLY)

PERSONNEL

REFERENCE NO. 129 C

SHEET 16 OF 18

NOTES CHENEY

DATE 6-10-1993

ROUTE SR 163

H.C. RIPPLE

WEATHER CLOUDY

COUNTY OTTAWA

R.C. BARBOUR

TEMP. 80°

TOWNSHIP PORTAGE

GEYMAN

SECTION 36

T 7 N R 17 E

TYPE MONUMENT FD. P.K. AND WASHER

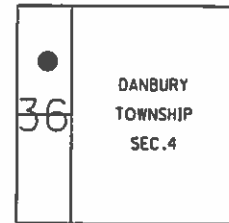
ON SURFACE - ~~BELOW~~ ON

~~LEFT~~ - Q PAV'T - RIGHT 0.5'

10.5' TO RT. EDGE PAVEMENT

S.L.M. 1588+11

GRID: NORTHING: 677601.181 EASTING: 1871657.724



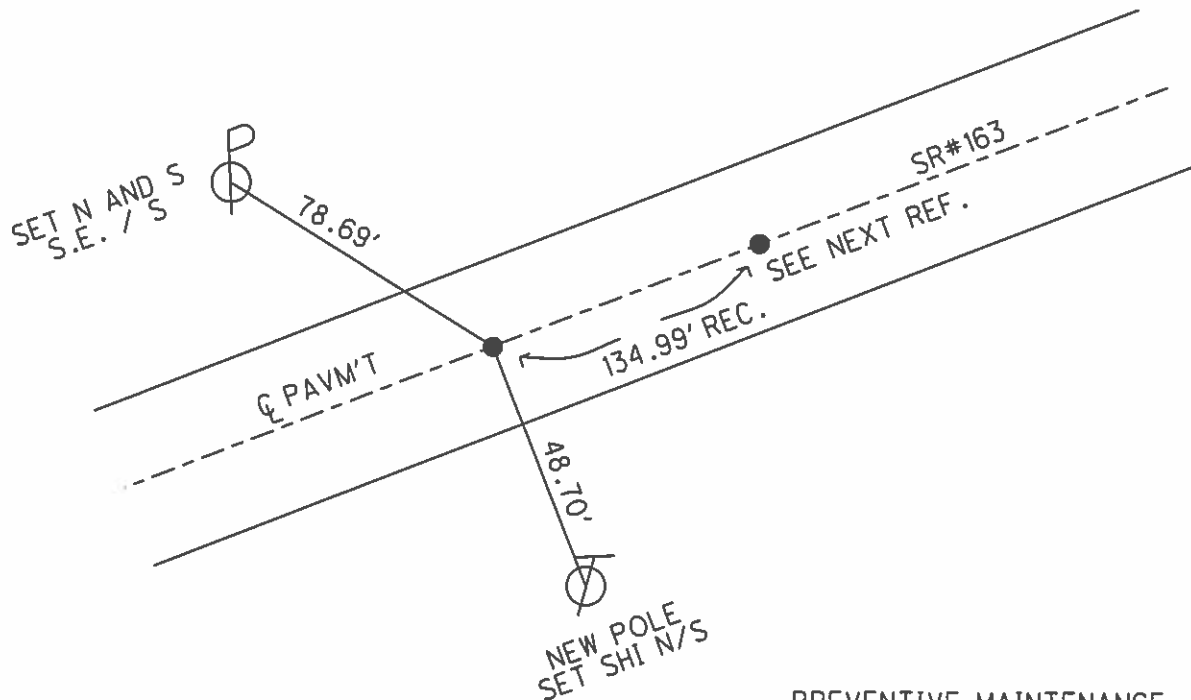
RECORD: 9-16-1985

P.T. 185+11.20

P.K. AND WASHER ATOP P.K. AND WASHER

NOTE:

SET P.K. AND WASHER
7-13-1993 J.L.R.
FD P.K./WASHER
GPS, REF181
9/6/11, DCH



PREVENTIVE MAINTENANCE
MICROSURFACED 2000
EXISTING POINT UNCOVERED
DATE: 11-9-2000

O.D.O.T. DISTRICT 2 SURVEY OFFICE

PERSONNEL

REFERENCE NO. 129C

SHEET 19 OF 23

NOTES CHENEY

H.C. RIPPLE

R.C. BARBOUR

GEYMAN

DATE 6-10-1993

WEATHER Cloudy

TEMP. 80°

ROUTE S.R.#163

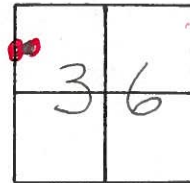
COUNTY OTTAWA

TOWNSHIP Portage

SECTION 36

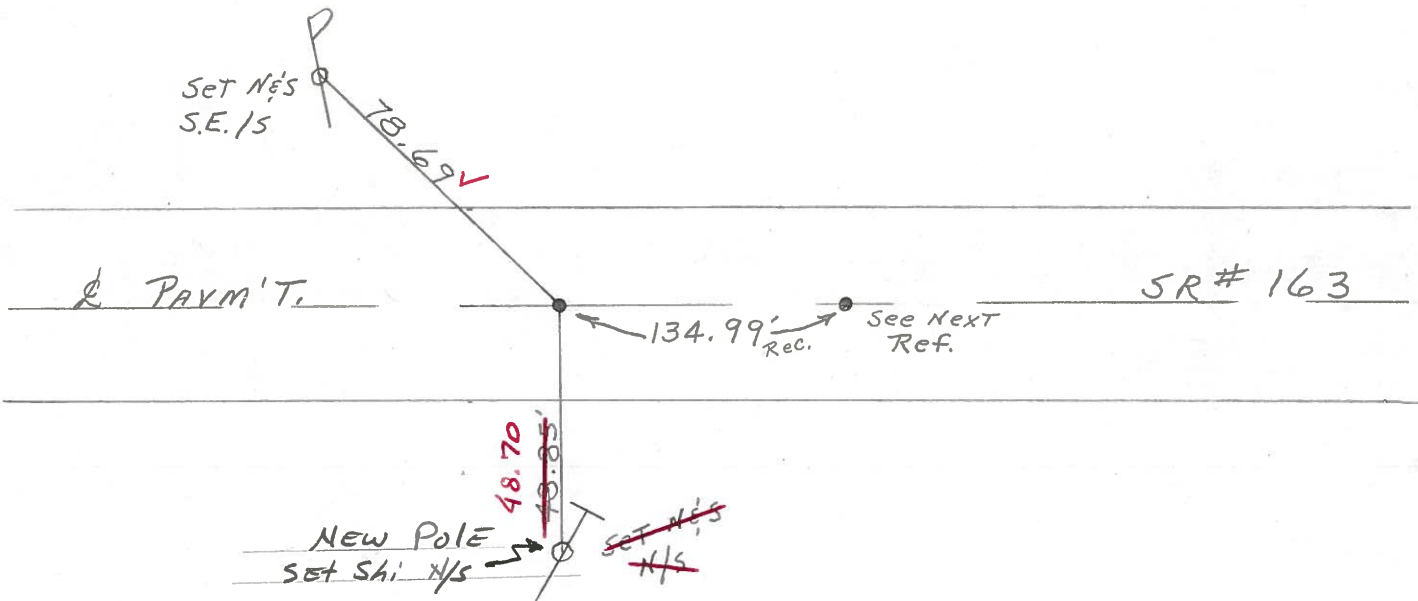
T7 N R 17 E

TYPE MONUMENT Ed. P.K. & Washer
 ON SURFACE - ~~BELOW~~ ON SURFACE
~~LEFT-C. PAV'T.~~ - RIGHT 0.5' RT. & Pav'T
10.5 TO RT. EDGE PAVEMENT
 S.L.M. 1588+11



Record: 9-16-1985
P.T. 185+11.20
P.K. & Washer ATop P.K. & Washer

NOTE: Set P.K. & Washer
6-10-1993 J.L.R.



Preventive Maintenance
 Microsurfaced 2000
 Existing Point Uncovered
 Date 11-9-2000

O.D.O.T. DISTRICT 2 SURVEY OFFICE

PERSONNEL

REFERENCE NO. _____

SHEET 19 OF _____

NOTES CROWIN

H.C. RIPPLE

R.C. BARBOUR

GEYMAN

DATE 9/16/85

WEATHER SUNNY

TEMP. 75°

ROUTE #163

COUNTY OTTAWA

TOWNSHIP PORTAGE

SECTION 36

T 7 N R 17 E

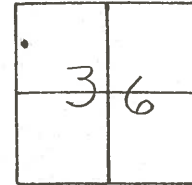
TYPE MONUMENT P.K. WASHER AT OP P.K. WASHER

ON SURFACE - BELOW ON SURFACE

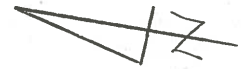
LEFT - 0.5' RT. & PAUT.

TO EDGE PAVEMENT

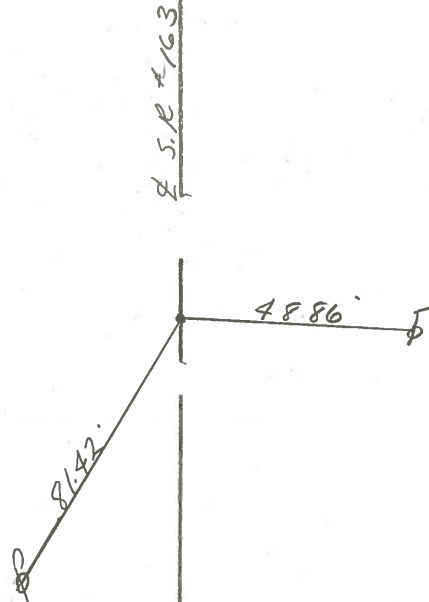
S.L.M. _____



129C

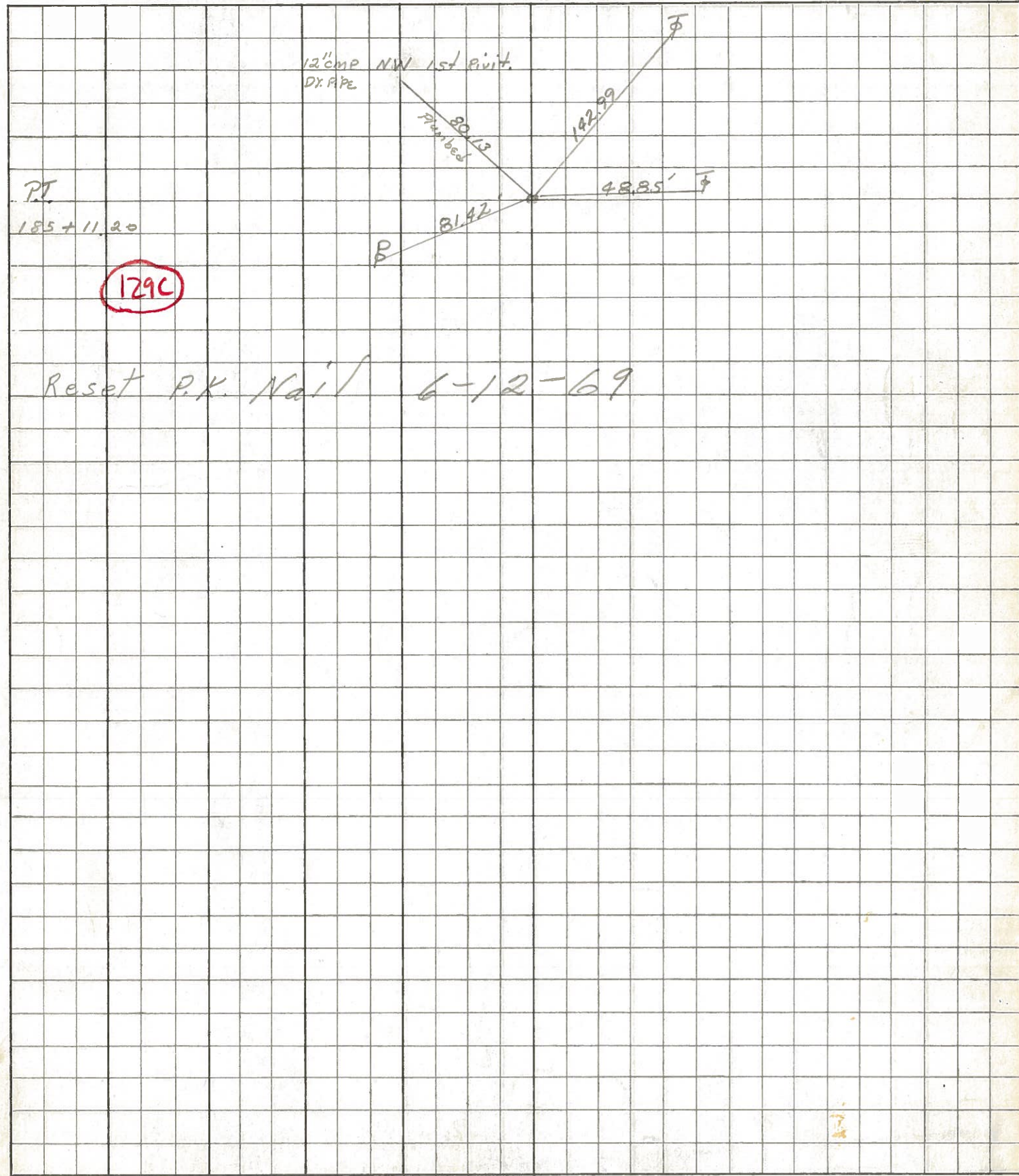


P.T.
185+11.20



PERSONNEL	TITLE	PERSONNEL	TITLE	COUNTY	DATE
Ripple				Ottawa	3/18/69
Evmon				S. R. 163	WEATHER Clear
ANDERSON				SEC. Port Clinton East	TEMP. 60°

DESCRIPTION _____ LEFT _____ CENTER LINE _____ RIGHT _____ JOB NO. _____



PT
185 + 11.20

129C

Reset P.K. Nail 6-12-69