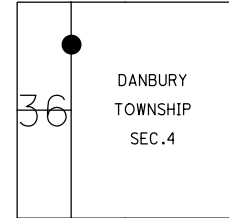


O.D.O.T. DISTRICT 2 SURVEY OFFICE (USE ONLY)

PERSONNEL \_\_\_\_\_ REFERENCE NO. 130 SHEET 18 OF 18  
 NOTES HOMAN DATE 9/9/11 ROUTE SR 163  
 H.C. ROUSOS WEATHER CLOUDY COUNTY OTTAWA  
 R.C. HOMAN TEMP. 70° TOWNSHIP PORTAGE  
 \_\_\_\_\_ SECTION 36  
 DWG BY NIESE PID 107919 T 7 N R 17 E

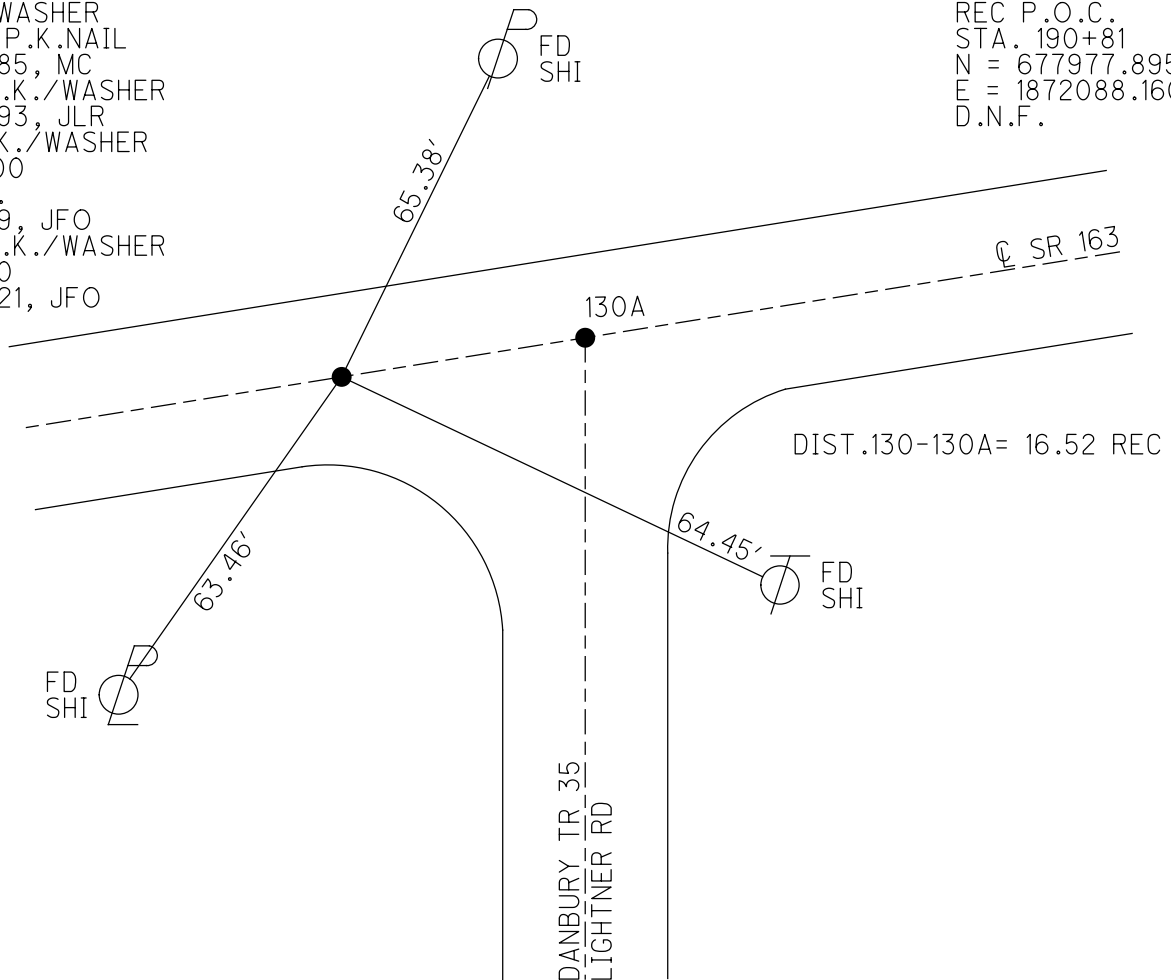
TYPE MONUMENT P.K./WASHER  
 ON SURFACE - ~~BELOW~~ ON  
 OFFSET ☐ PAVEMENT ON LT : RT  
12.0' TO LT EDGE PAVEMENT  
 STATION: 1593+65



HORIZ.DATUM: NAD83(2011) GEOID: NAVD88 2012A  
 GRID: NORTHING: 677966.503 EASTING: 1872072.365

RECORD: P.O.C.  
 STA. 190+64.48  
 P.K./WASHER  
 ATOP P.K.NAIL  
 9/17/85, MC  
 SET P.K./WASHER  
 7/14/93, JLR  
 FD P.K./WASHER  
 11/9/00  
 D.N.F.  
 4/2/19, JFO  
 SET P.K./WASHER  
 NEW130  
 9/13/21, JFO

NOTE:  
 REF 130A  
 REC P.O.C.  
 STA. 190+81  
 N = 677977.895  
 E = 1872088.160  
 D.N.F.



O.D.O.T. DISTRICT 2 SURVEY OFFICE (USE ONLY)

PERSONNEL

REFERENCE NO. 130

SHEET 17 OF       

NOTES HOMAN

DATE 9/9/11

ROUTE SR 163

H.C. ROUSOS

WEATHER CLOUDY

COUNTY OTTAWA

R.C. HOMAN

TEMP. 70°

TOWNSHIP PORTAGE

SECTION 36

DWG BY NIESE

PID 107060

T 7 N R 17 E

TYPE MONUMENT P.K./WASHER

ON SURFACE - ~~BELOW~~ ON

OFFSET  $\varnothing$  PAVEMENT ON        LT : RT

12.0' TO LT EDGE PAVEMENT

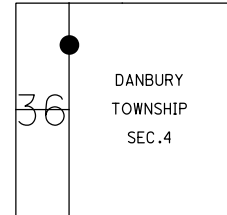
STATION: 1593+65

HORZ.DATUM: NAD83(2011)

GEOID: 2012A

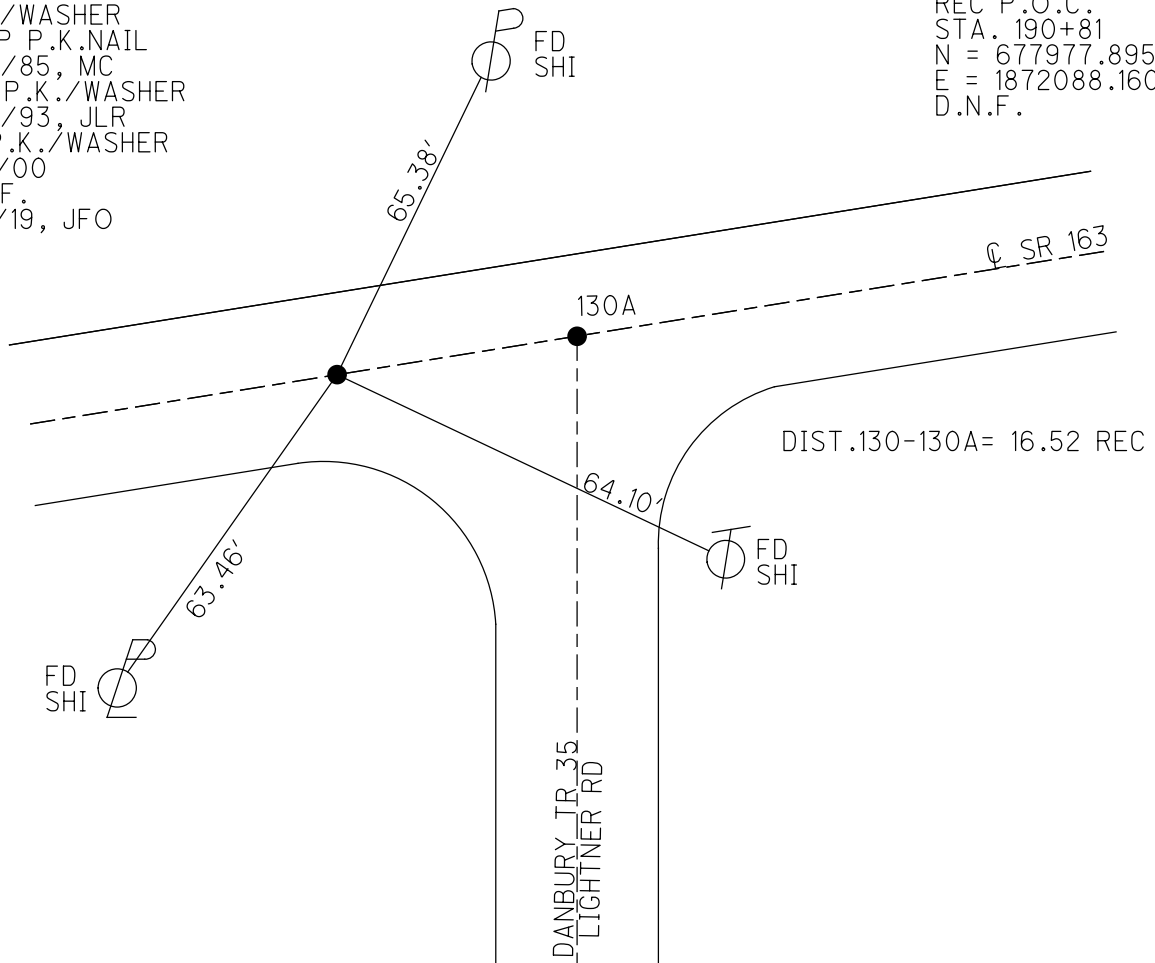
GRID: NORTHING: 677966.503

EASTING: 1872072.365



RECORD: P.O.C.  
 STA. 190+64.48  
 P.K./WASHER  
 ATOP P.K.NAIL  
 9/17/85, MC  
 SET P.K./WASHER  
 7/14/93, JLR  
 FD P.K./WASHER  
 11/9/00  
 D.N.F.  
 4/2/19, JFO

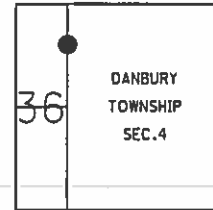
NOTE:  
 REF 130A  
 REC P.O.C.  
 STA. 190+81  
 N = 677977.895  
 E = 1872088.160  
 D.N.F.



**O.D.O.T. DISTRICT 2 SURVEY OFFICE (USE ONLY)**

PERSONNEL	REFERENCE NO. <u>130</u>	SHEET <u>18</u> OF <u>18</u>
NOTES <u>HOMAN</u>	DATE <u>9/9/11</u>	ROUTE <u>SR 163</u>
H.C. <u>ROUSOS</u>	WEATHER <u>CLOUDY</u>	COUNTY <u>OTTAWA</u>
R.C. <u>HOMAN</u>	TEMP. <u>70°</u>	TOWNSHIP <u>PORTAGE</u>
		SECTION <u>36</u>
		T <u>7</u> N <u>17</u> E

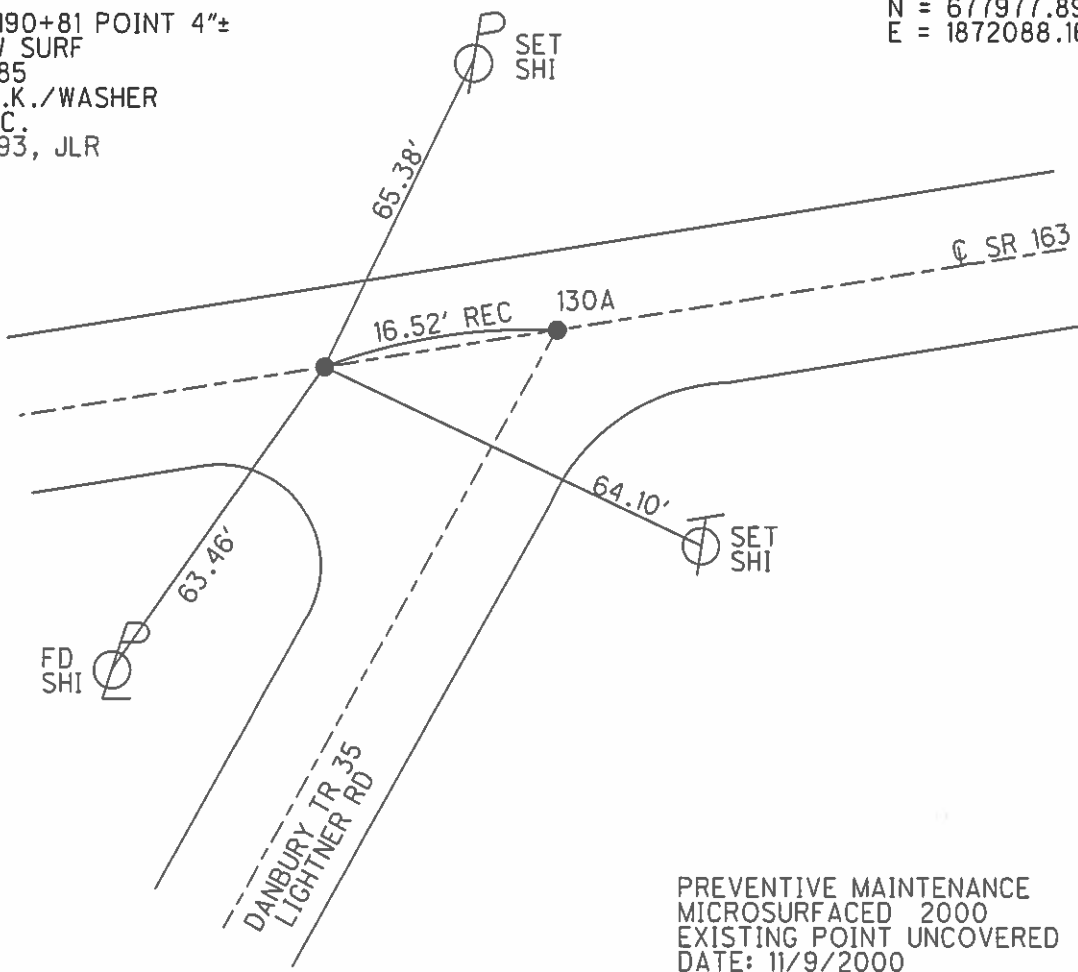
TYPE MONUMENT P.K./WASHER  
 ON SURFACE - ~~BELOW~~ ON  
~~LEFT - C PAV'T - RIGHT~~ ON  
12' TO LT EDGE PAVEMENT  
 S.L.M. 1593+65



GRID: NORTHING: 677966.503 EASTING: 1872072.365

RECORD: M.C.  
 STA. 190+64.48  
 P.K./WASHER ATOP P.K.  
 P.O.C  
 STA. 190+81 POINT 4"±  
 BELOW SURF  
 9/17/85  
 SET P.K./WASHER  
 ON M.C.  
 7/14/93, JLR

NOTE:  
 REF 130A  
 REC P.O.C.  
 STA. 190+81  
 N = 677977.895  
 E = 1872088.160



PREVENTIVE MAINTENANCE  
 MICROSURFACED 2000  
 EXISTING POINT UNCOVERED  
 DATE: 11/9/2000

O.D.O.T. DISTRICT 2 SURVEY OFFICE (USE ONLY)

PERSONNEL

REFERENCE NO. 130

SHEET 18 OF 18

NOTES HOMAN

DATE 9/9/11

ROUTE SR 163

H.C. ROUSOS

WEATHER CLOUDY

COUNTY OTTAWA

R.C. HOMAN

TEMP. 70°

TOWNSHIP PORTAGE, DANBURY

SECTION 36, 4

T 7 N R 17 E

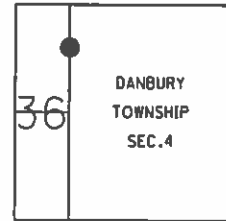
TYPE MONUMENT FD. P.K. AND WASHER

ON SURFACE - ~~BELOW~~ ON

LEFT - ☉ PAV'T - RIGHT ON

12' TO LT. EDGE PAVEMENT

S.L.M. 1593+65

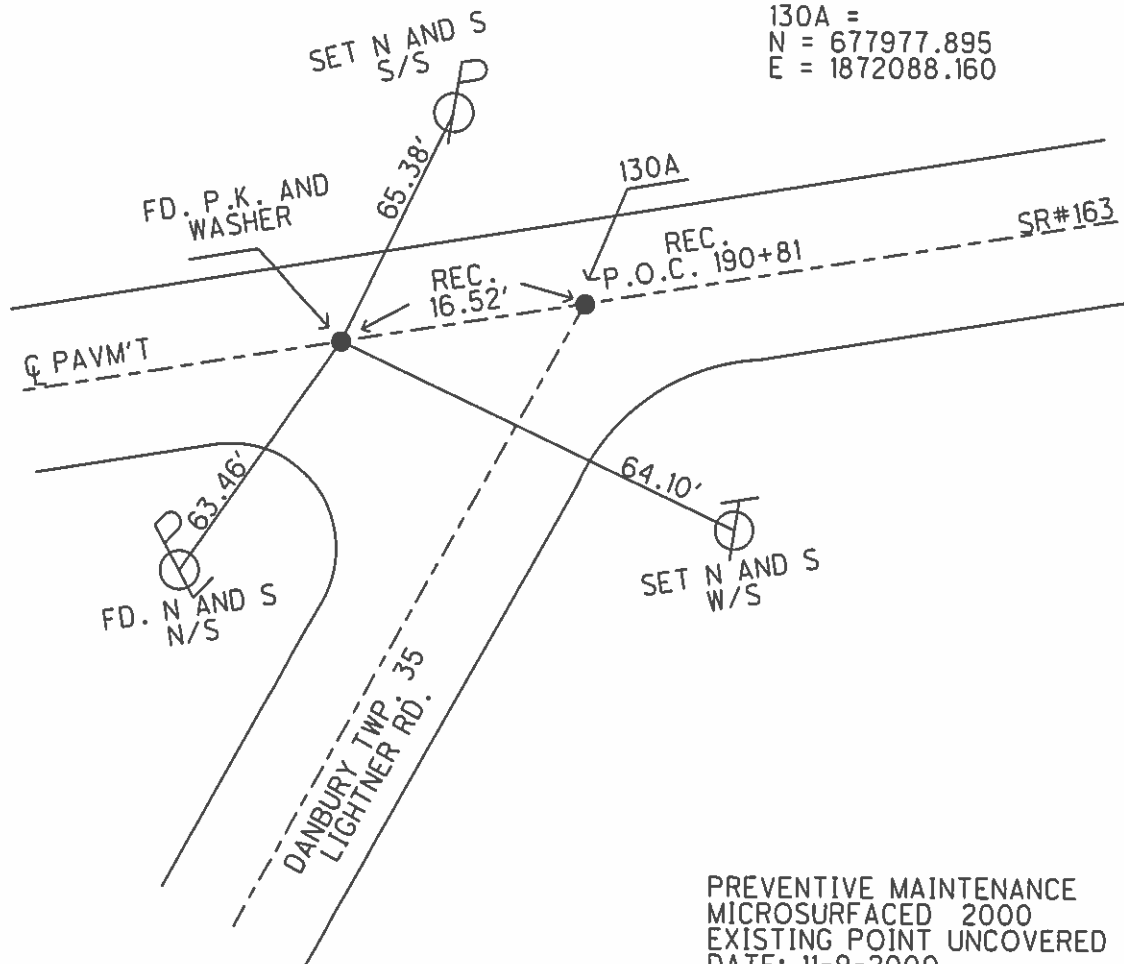


GRID: NORTHING: 677966.503 EASTING: 1872072.365

RECORD: 9-17-1985  
 P.K. AND WASHER ATOP P.K.  
 M.C. 190+64.48  
 P.O.C. 190+81 POINT 4" ± BELOW SURFACE

NOTE: SET P.K. AND WASHER  
 ON M.C. 7-14-1993 J.L.R.  
 DID NOT DIG OR GET A  
 PULL WITH METAL DETECTOR

130A =  
 N = 677977.895  
 E = 1872088.160

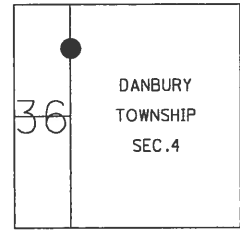


PREVENTIVE MAINTENANCE  
 MICROSURFACED 2000  
 EXISTING POINT UNCOVERED  
 DATE: 11-9-2000

O.D.O.T. DISTRICT 2 SURVEY OFFICE (Use Only)

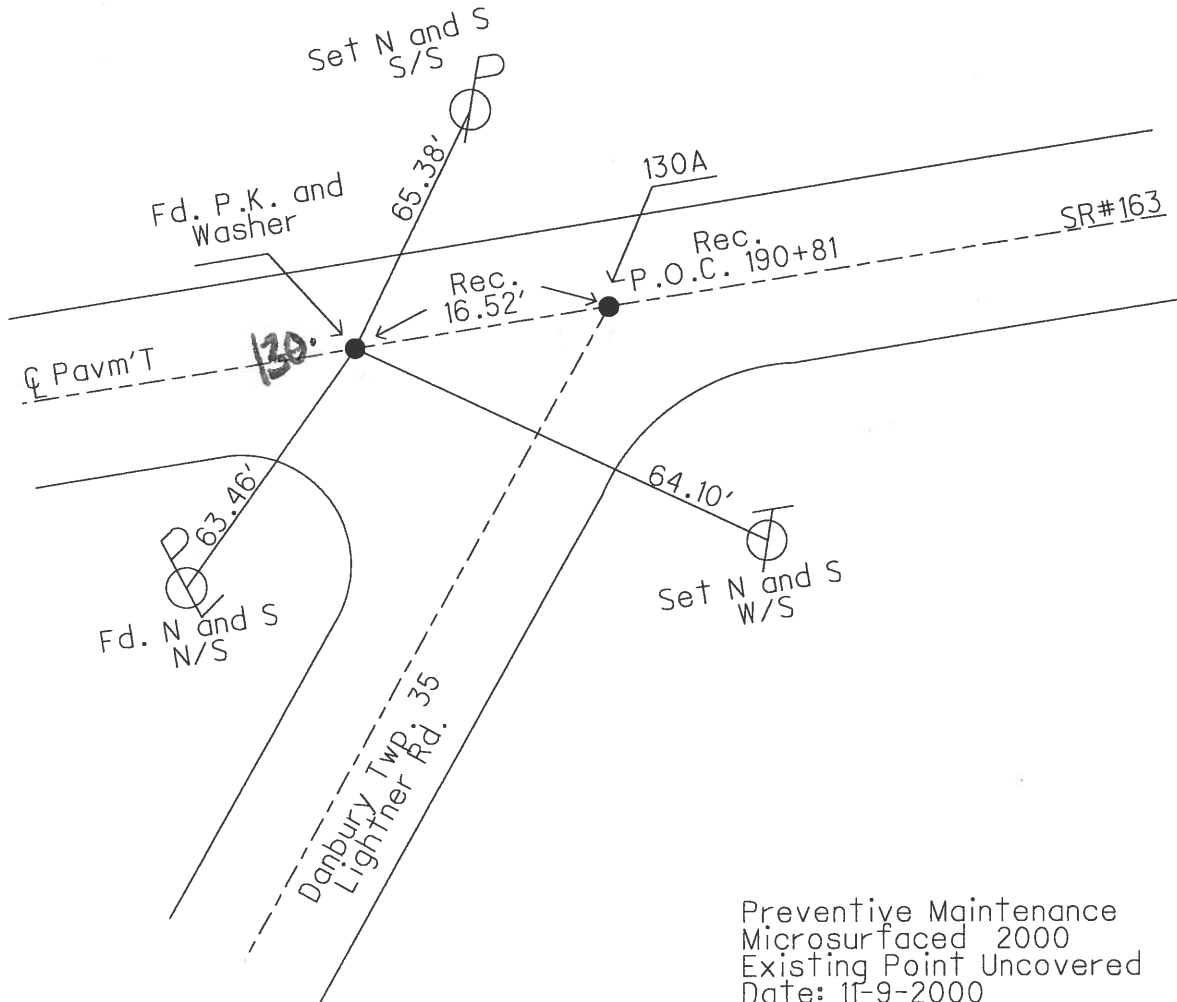
PERSONNEL	REFERENCE NO. <u>130</u>	SHEET <u>18</u> OF <u>18</u>
NOTES <u>Cheney</u>	DATE <u>6-10-1993</u>	ROUTE <u>SR 163</u>
H.C. <u>Ripple</u>	WEATHER <u>Cloudy</u>	COUNTY <u>OTTAWA</u>
R.C. <u>Barbour</u>	TEMP. <u>80°</u>	TOWNSHIP <u>PORTAGE, DANBURY</u>
<u>Geyman</u>		SECTION <u>36, 4</u>
		T <u>7</u> N R <u>17</u> E

TYPE MONUMENT Fd. P.K. and Washer  
 ON SURFACE - ~~BELOW~~ On Surface  
~~LEFT - C PAV'T - RIGHT~~ ℄ Pav'T  
12' TO LT. EDGE PAVEMENT  
 S.L.M. 1593+65  
 Grid: Northing: \_\_\_\_\_ Easting: \_\_\_\_\_



Record: 9-17-1985  
 P.K. and Washer Atop P.K.  
 M.C. 190+64.48  
 P.O.C. 190+81 Point 4" ± Below Surface

Note: Set P.K. and Washer  
 On M.C. 7-14-1993 J.L.R.  
 Did Not Dig or Get A  
 Pull with Metal Detector



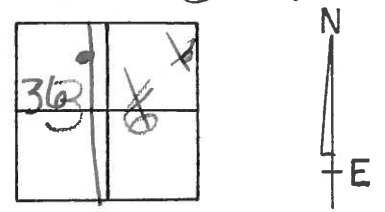
Preventive Maintenance  
 Microsurfaced 2000  
 Existing Point Uncovered  
 Date: 11-9-2000

O.D.O.T. DISTRICT 2 SURVEY OFFICE 1 of

PERSONNEL REFERENCE NO. 130A SHEET 21 OF 23

NOTES CHENBY HARBAUGH 9-9-2010
H.C. RIPPLE DATE 6-10-1993 ROUTE SR#163
R.C. BARBOUR WEATHER Cloudy COUNTY OTTAWA
GEYMAN TEMP. 80°70° TOWNSHIP PORTAGE
SECTION 36 #
T7 N R 17 E X

TYPE MONUMENT Fd. P.K. WASHER
ON SURFACE - BELOW ON SURFACE
LEFT - & PAV'T. - RIGHT & PAV'T. 8" LT
12' TO LT. EDGE PAVEMENT
S.L.M. 1593+65

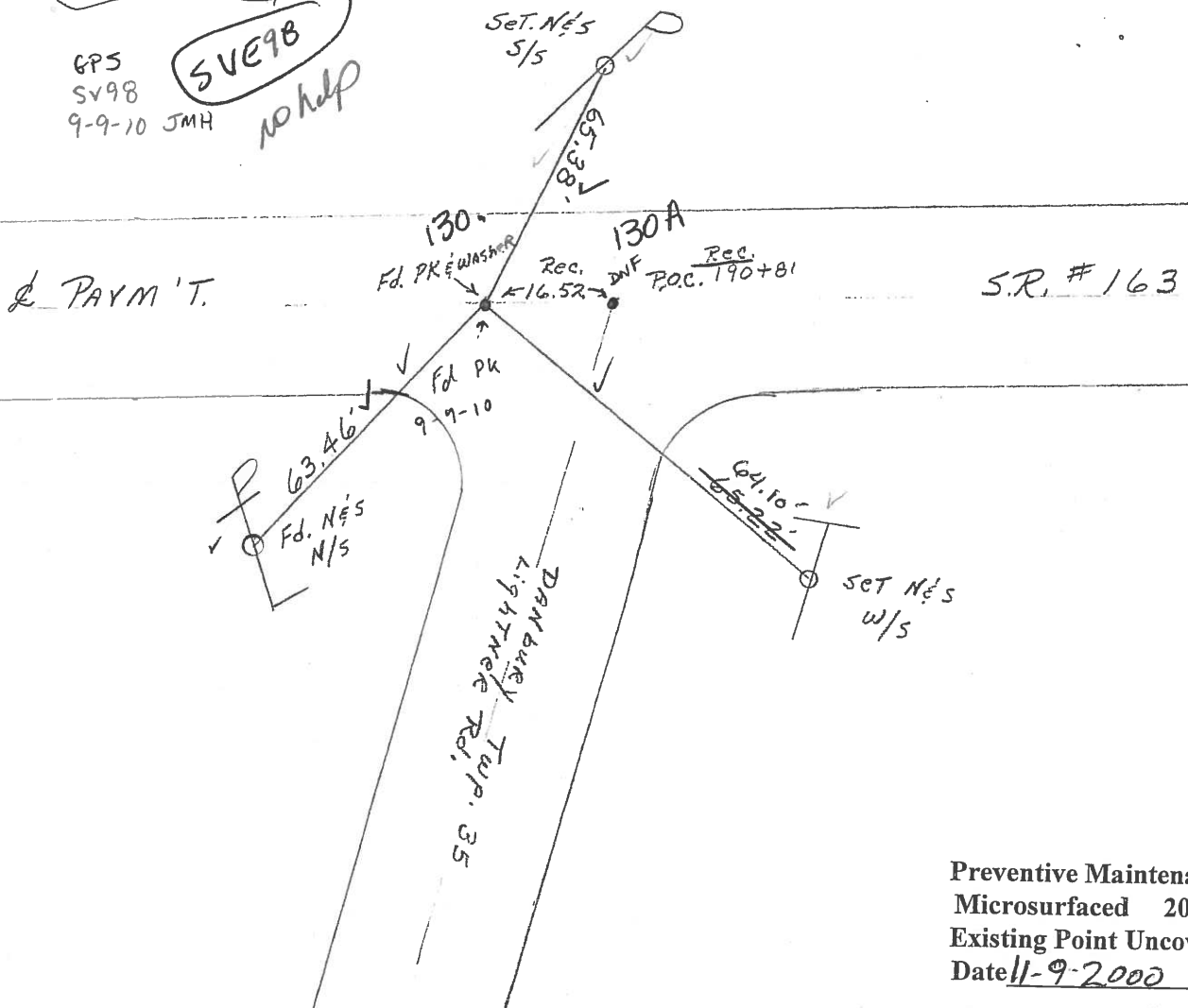


Record: 9-17-1985
PK. & WASHER AT OP PK.
M.C. 190+64.48
P.O.C. 190+81 POINT 4" ± BELOW SURFACE.

NOTE: SET PK. & WASHER ON M.C. 7-14-1993 JLR. DID NOT DIG OR GET A PULL WITH METAL DETECTOR

GPS SV98 9-9-10 JMH

SVE98 no help



Preventive Maintenance
Microsurfaced 2000
Existing Point Uncovered
Date 11-9-2000

# O.D.O.T. DISTRICT 2 SURVEY OFFICE

PERSONNEL

REFERENCE NO. 130

SHEET 21 OF 23

NOTES CHENEY

H.C. RIPPLE

R.C. BARBOUR

GEYMAN

DATE 6-10-1993

WEATHER Cloudy

TEMP. 80°

ROUTE SR#163

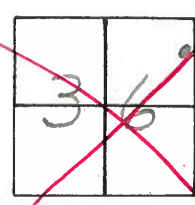
COUNTY OTTAWA

TOWNSHIP Portage

SECTION 36

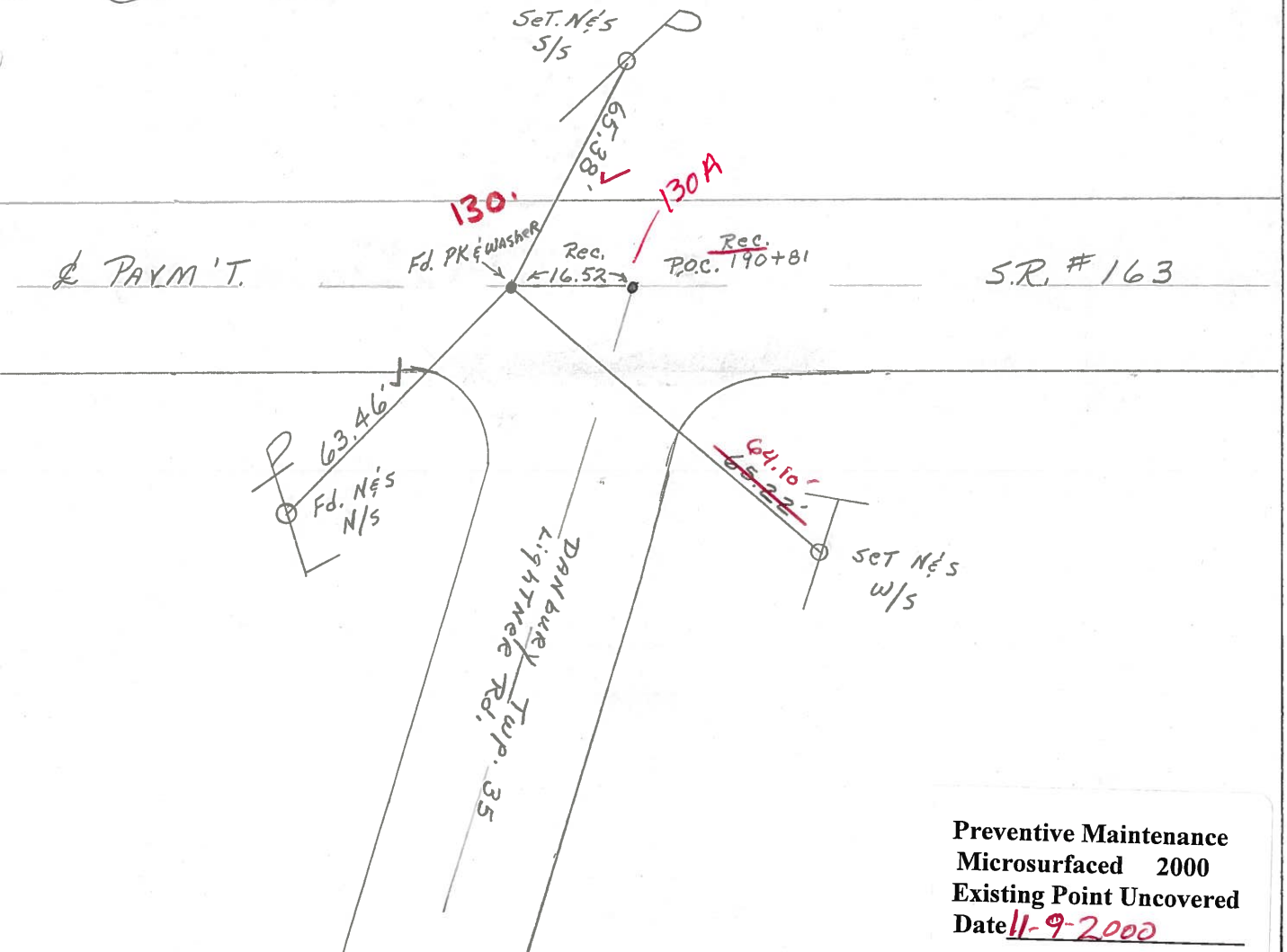
T7 N R 17 E

TYPE MONUMENT Fd. P.K. & Washer  
 ON SURFACE - ~~BELOW~~ ON SURFACE  
 LEFT - & PAV'T. - RIGHT & PAV'T.  
12' TO LT. EDGE PAVEMENT  
 S.L.M. 1593 + 65



Record: 9-17-1985  
PK. & washer at Top PK.  
M.C. 190 + 64.48  
P.O.C. 190 + 81 Point 4" ± below  
Surface.

NOTE: Set PK. & Washer  
on M.C. 7-14-1993 JLR.  
Did NOT Dig or Get A  
PULL with METAL  
DETECTOR



Preventive Maintenance  
 Microsurfaced 2000  
 Existing Point Uncovered  
 Date 11-9-2000

# O.D.O.T. DISTRICT 2 SURVEY OFFICE

PERSONNEL \_\_\_\_\_

REFERENCE NO. \_\_\_\_\_

SHEET 21 OF \_\_\_\_\_

NOTES Cronin

H.C. Ripplé

R.C. Barbour

Geyman

DATE 9/17/85

WEATHER Sunny

TEMP. 75°

ROUTE #163

COUNTY OTTAWA

TOWNSHIP Portage

SECTION 36

T 7 N R 17 E

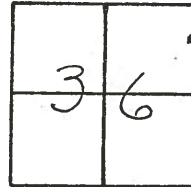
TYPE MONUMENT Pk Washer Top Pk

ON SURFACE - BELOW ON SURFACE

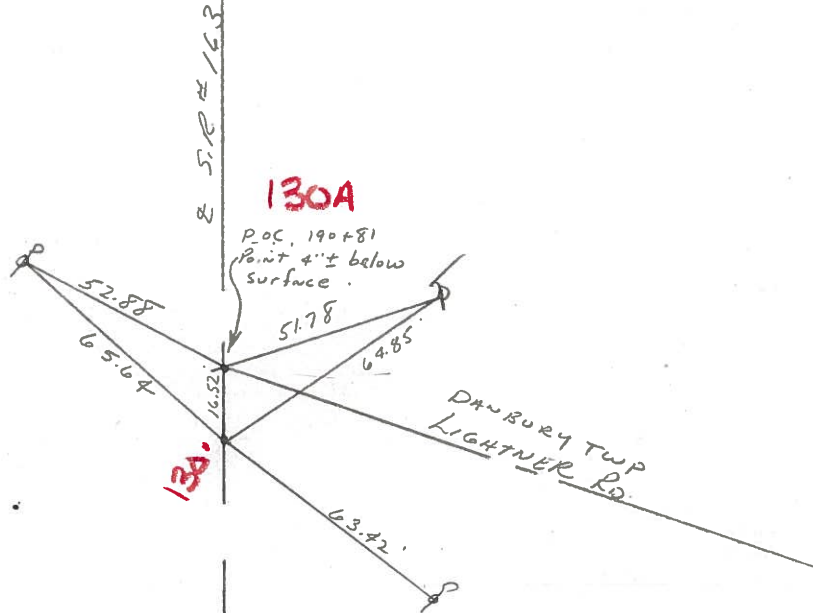
LEFT- & PAW'T. - RIGHT L. Pawt

TO: EDGE PAVEMENT

S.L.M. \_\_\_\_\_



H.C. \_\_\_\_\_  
190+64.48

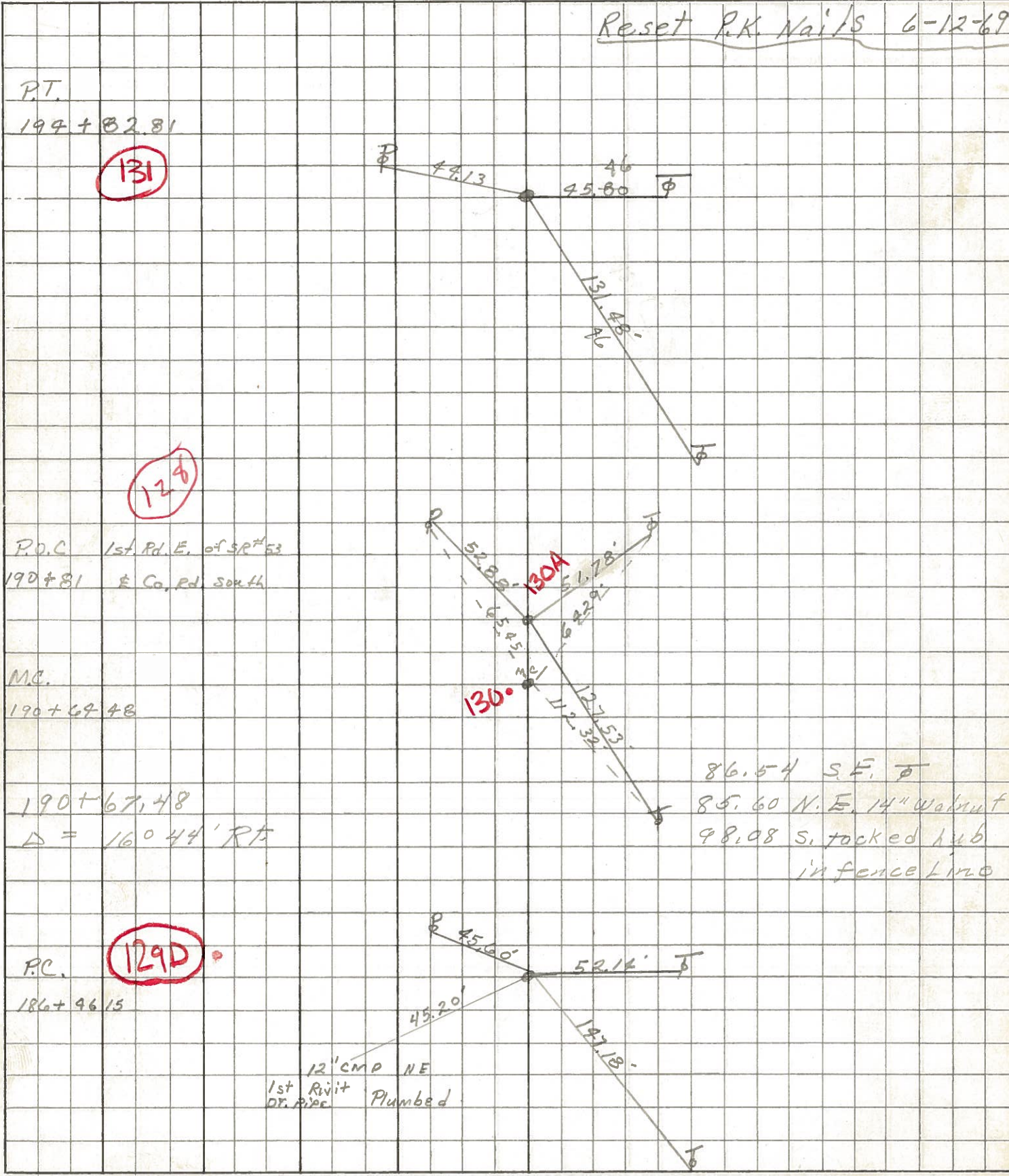




PERSONNEL	TITLE	PERSONNEL	TITLE	COUNTY	DATE
Ripple	T			Ottawa	
Coyne	POD			S. R. 143	WEATHER Clear
Anderson	POD			SEC. Post-Clinton East	TEMP. 60°

DESCRIPTION \_\_\_\_\_ LEFT \_\_\_\_\_ CENTER LINE \_\_\_\_\_ RIGHT \_\_\_\_\_ JOB NO. \_\_\_\_\_

Reset P.K. Nails 6-12-69





PERSONNEL TITLE PERSONNEL TITLE

Schneider  
Mosser  
Barbour

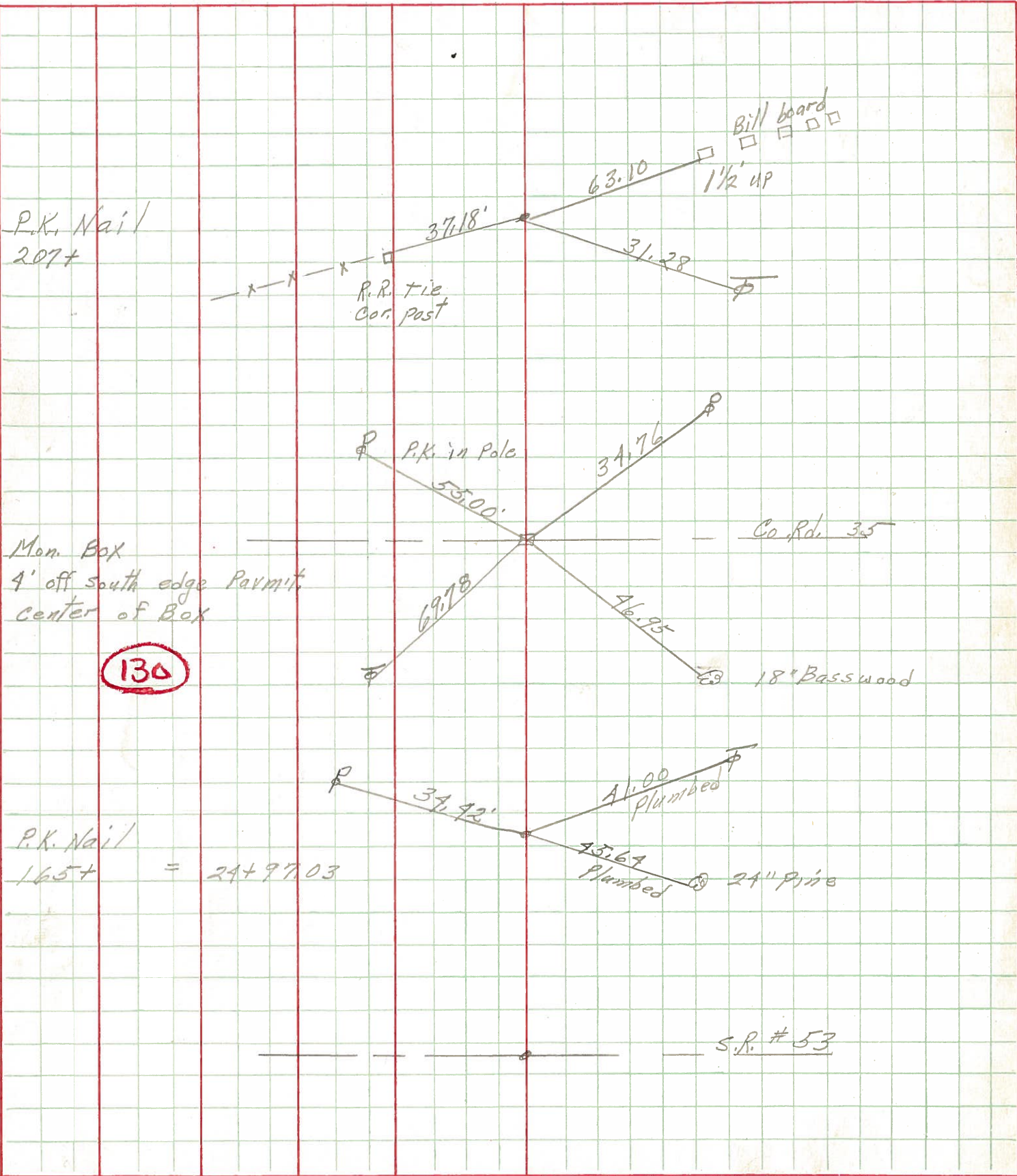
COUNTY Ottawa DATE 6-4-69

S. R. 163 old S.R. 2 WEATHER Fair  
East of Port Clinton

SEC. 000-9.30 TEMP. 60°

DESCRIPTION Ties for Central Points JOB NO.

LEFT CENTER LINE RIGHT



130

= 24+97.03

S.R. # 53

PERSONNEL	TITLE	PERSONNEL	TITLE	COUNTY	DATE
<u>Schneider</u>		<u>Potts</u>		<u>Ottawa</u>	<u>9-9-68</u>
<u>Mosser</u>				S. R.	WEATHER
<u>Barbour</u>				<u>163</u>	<u>Fair</u>
<u>Reeding</u>				SEC.	TEMP.
				<u>Port Clinton - East</u>	<u>82°</u>
DESCRIPTION	<u>Ties for Control Points</u>				JOB NO.
	LEFT	CENTER LINE	RIGHT		

202+98.79 P.K. Nail	(131A)		51.32 S.S.E. $\neq$ 80.38 N.E. Dent in C.M.P. dr. pipe 55.08 N.W. shiner in $\Phi$ 32.73 "X" on <sup>th</sup> end of 12" conc. tile south
6359			
1st. Rd. E. of S.R. #53 190+81 & Co. Rd. south	(130A)		did not find
6358			
190+67.98 $\Delta = 16^\circ 44'$ Rt.	(130)		86.54 S.E. $\neq$ 85.60 N.E. 14" walnut 98.08 S. tacked hub in fence line
6357			
P.K. Nail 169+15 S.R. #163 608+79.58 S.R. 53 Ahd. 56+98.15 S.R. 53 Bk.	(129)		Light Pole 11" on top of curb $\Phi$ Light Pole S.R. #53 South
6356			
P.I. 149+29.00 $\Delta = 5^\circ 21'$ Lt. P.K. Nail	(128G)		Light Pole 34" Maple 12" Maple $\Phi$ 12" Maple $\Phi$ 51.92 65.93 74.98 76.71 33.55
6355			