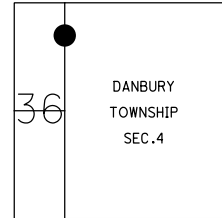


O.D.O.T. DISTRICT 2 SURVEY OFFICE (USE ONLY)

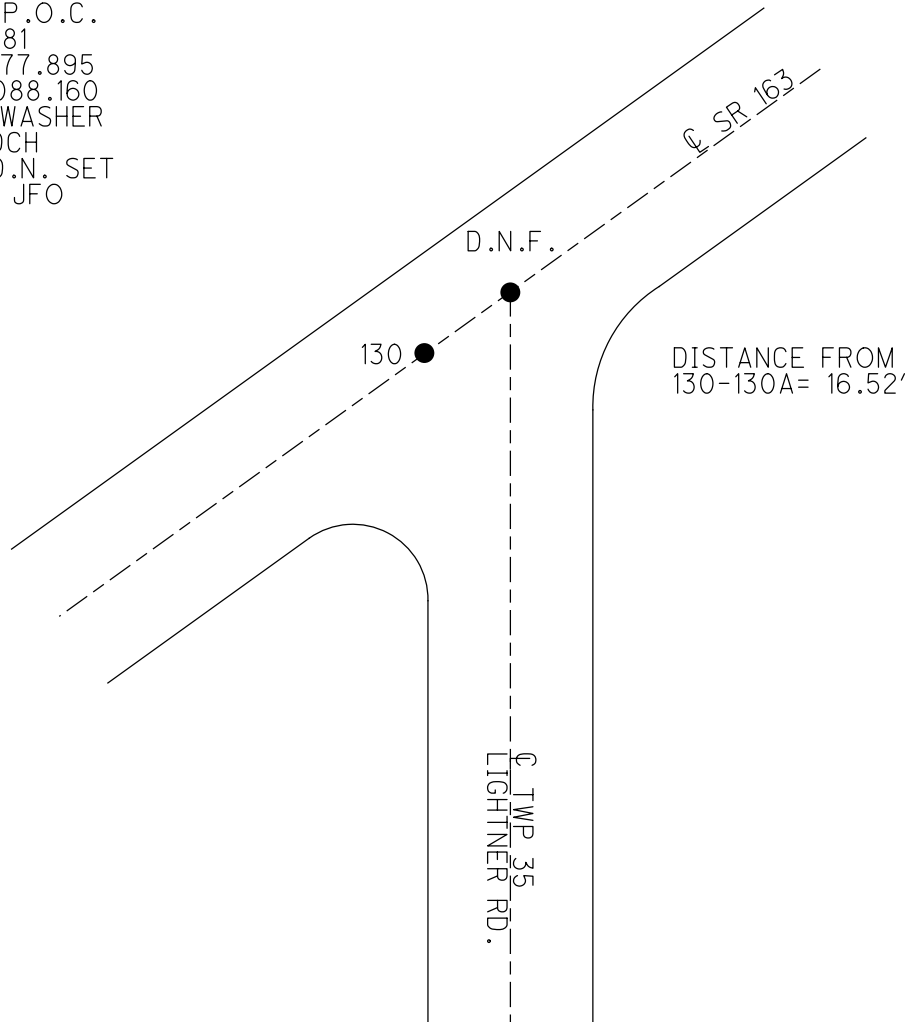
| | | | | | | |
|-----------|---------------|---------|---------|----------|------------------|----|
| PERSONNEL | REFERENCE NO. | 130 A | SHEET | 1 | OF | 63 |
| NOTES | CHENEY | DATE | 6/10/93 | ROUTE | SR 163 | |
| H.C. | RIPPLE | WEATHER | CLOUDY | COUNTY | OTTAWA | |
| R.C. | BARBOUR | TEMP. | 80° | TOWNSHIP | PORTAGE, DANBURY | |
| | GEYMAN | | | SECTION | 36, 4 | |
| | | | | T | 7 | N |
| | | | | R | 17 | E |

TYPE MONUMENT P.K./WASHER
 ON SURFACE - ~~BELOW~~ ON
 LEFT - Q PAV'T - ~~RIGHT~~ 8"
TO EDGE PAVEMENT
 S.L.M. 1593+81.52
 GRID: NORTHING: _____ EASTING: _____



NOTE:
 REF130= 677966.399,1872072.361

RECORD: P.O.C.
 STA 190+81
 N = 677977.895
 E = 1872088.160
 FD P.K./WASHER
 9/9/11, DCH
 D.N.F., D.N. SET
 4/24/19, JFO



O.D.O.T. DISTRICT 2 SURVEY OFFICE (USE ONLY)

PERSONNEL _____

REFERENCE NO. 130

SHEET 18 OF 18

NOTES HOMAN

DATE 9/9/11

ROUTE SR 163

H.C. ROUSOS

WEATHER CLOUDY

COUNTY OTTAWA

R.C. HOMAN

TEMP. 70°

TOWNSHIP PORTAGE, DANBURY

SECTION 36, 4

T 7 N R 17 E

TYPE MONUMENT FD. P.K. AND WASHER

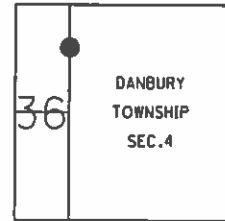
ON SURFACE - ~~BELOW~~ ON

LEFT - ☉ PAV'T - RIGHT ON

12' TO LT. EDGE PAVEMENT

S.L.M. 1593+65

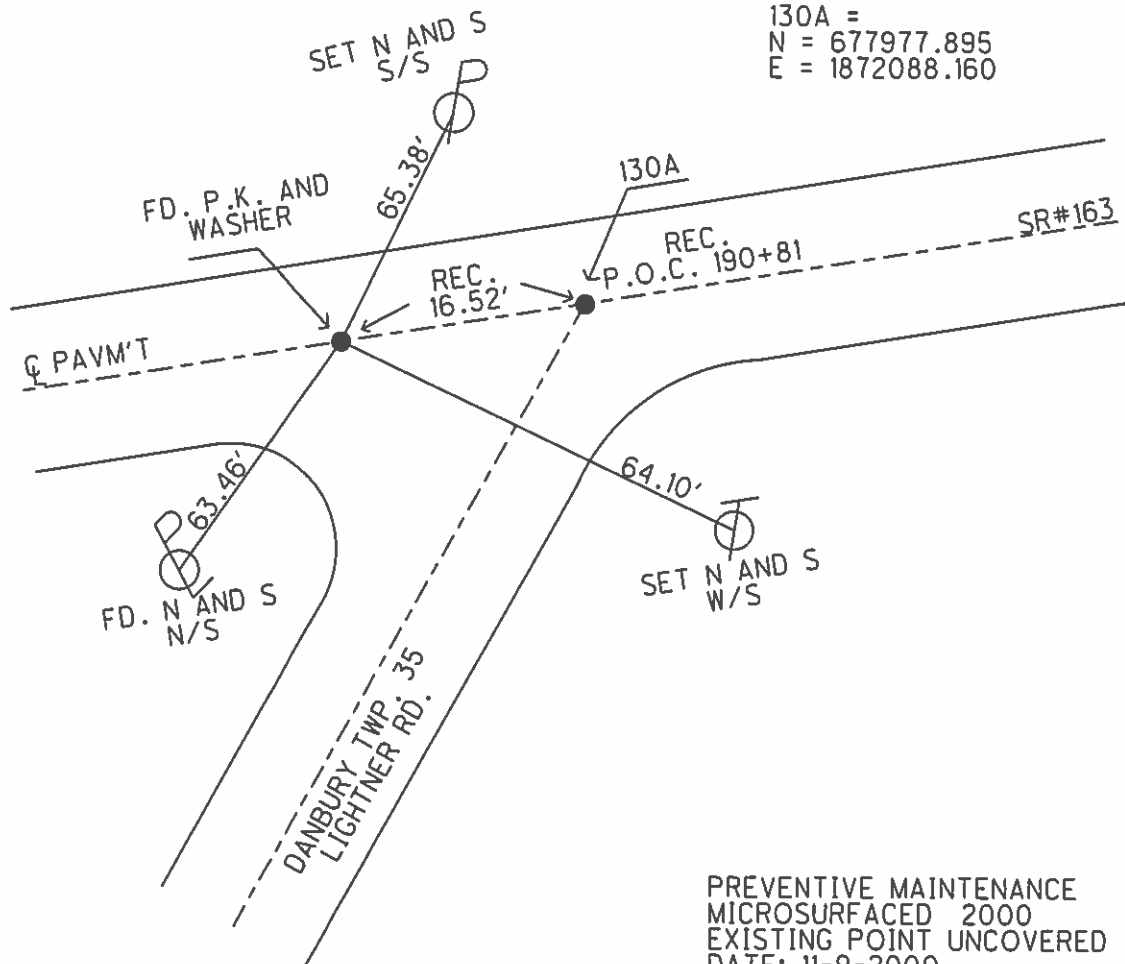
GRID: NORTHING: 677966.503 EASTING: 1872072.365



RECORD: 9-17-1985
 P.K. AND WASHER ATOP P.K.
 M.C. 190+64.48
 P.O.C. 190+81 POINT 4" ± BELOW SURFACE

NOTE: SET P.K. AND WASHER
 ON M.C. 7-14-1993 J.L.R.
 DID NOT DIG OR GET A
 PULL WITH METAL DETECTOR

130A =
 N = 677977.895
 E = 1872088.160

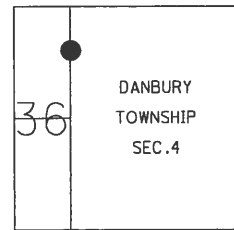


PREVENTIVE MAINTENANCE
 MICROSURFACED 2000
 EXISTING POINT UNCOVERED
 DATE: 11-9-2000

O.D.O.T. DISTRICT 2 SURVEY OFFICE (Use Only)

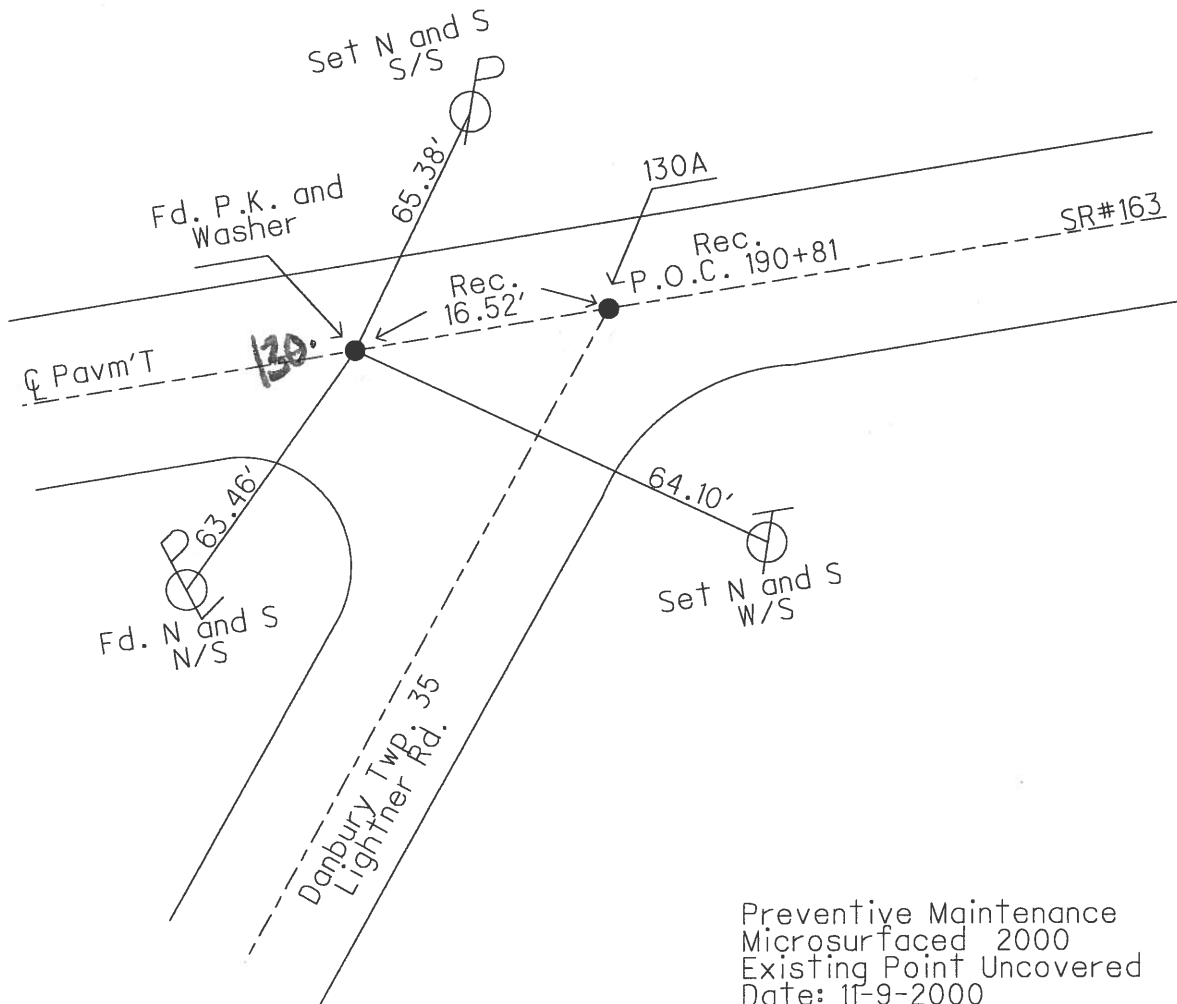
| | | |
|---------------------|--------------------------|----------------------------------|
| PERSONNEL | REFERENCE NO. <u>130</u> | SHEET <u>18</u> OF <u>18</u> |
| NOTES <u>Cheney</u> | DATE <u>6-10-1993</u> | ROUTE <u>SR 163</u> |
| H.C. <u>Ripple</u> | WEATHER <u>Cloudy</u> | COUNTY <u>OTTAWA</u> |
| R.C. <u>Barbour</u> | TEMP. <u>80°</u> | TOWNSHIP <u>PORTAGE, DANBURY</u> |
| <u>Geyman</u> | | SECTION <u>36, 4</u> |
| | | T <u>7</u> N R <u>17</u> E |

TYPE MONUMENT Fd. P.K. and Washer
 ON SURFACE - ~~BELOW~~ On Surface
~~LEFT - C/Pav'T - RIGHT~~ ℄ Pav'T
12' TO LT. EDGE PAVEMENT
 S.L.M. 1593+65
 Grid: Northing: _____ Easting: _____



Record: 9-17-1985
 P.K. and Washer Atop P.K.
 M.C. 190+64.48
 P.O.C. 190+81 Point 4" ± Below Surface

Note: Set P.K. and Washer
 On M.C. 7-14-1993 J.L.R.
 Did Not Dig or Get A
 Pull with Metal Detector



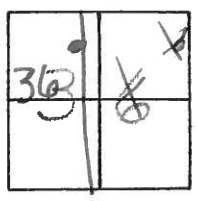
Preventive Maintenance
 Microsurfaced 2000
 Existing Point Uncovered
 Date: 11-9-2000

O.D.O.T. DISTRICT 2 SURVEY OFFICE 1 of

PERSONNEL REFERENCE NO. 130A SHEET 21 OF 23

NOTES CHENBY HARBAUGH 9-9-2010
H.C. RIPPLE DATE 6-10-1993 ROUTE SR# 163
R.C. BARBOUR WEATHER Cloudy COUNTY OTTAWA
GEYMAN TEMP. 80° 70° TOWNSHIP PORTAGE
SECTION 36 #
T7 N R 17 E X

TYPE MONUMENT Fd. P.K. WASHER
ON SURFACE - BELOW ON SURFACE
LEFT - & PAV'T. - RIGHT & PAV'T. 8" LT
12' TO LT. EDGE PAVEMENT
S.L.M. 1593 + 65

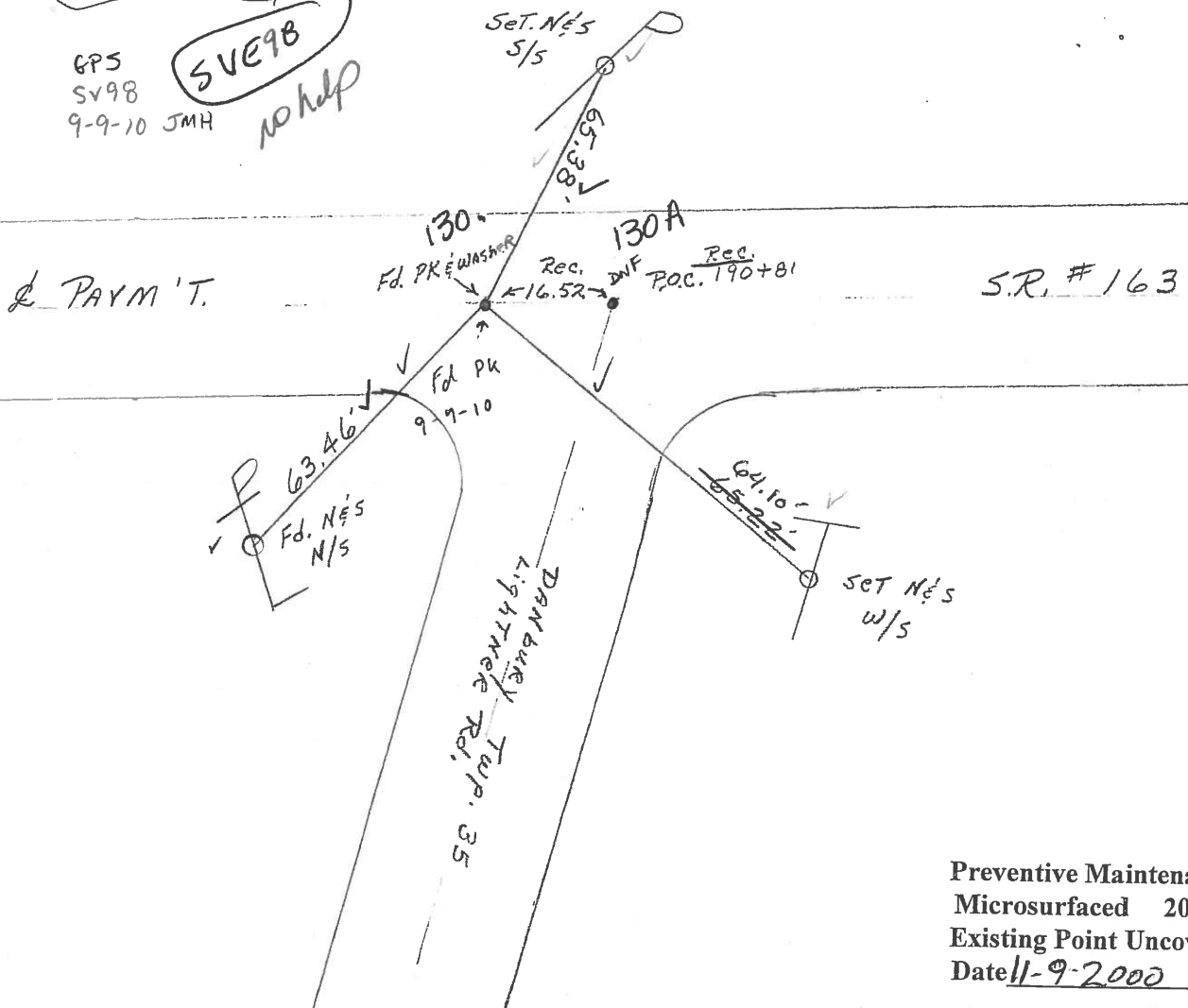


Record: 9-17-1985
PK. & washer at top PK.
M.C. 190 + 64.48
P.O.C. 190 + 81 Point 4" ± below
SURFACE.

NOTE: Set PK. & washer
ON M.C. 7-14-1993 JLR.
Did NOT dig or GET A
PULL WITH METAL
DETECTOR

GPS SV98 9-9-10 JMH

SVE98 no help



Preventive Maintenance
Microsurfaced 2000
Existing Point Uncovered
Date 11-9-2000

O.D.O.T. DISTRICT 2 SURVEY OFFICE

PERSONNEL

REFERENCE NO. 130

SHEET 21 OF 23

NOTES CHENEY

H.C. RIPPLE

R.C. BARBOUR

GEYMAN

DATE 6-10-1993

WEATHER Cloudy

TEMP. 80°

ROUTE SR#163

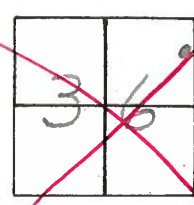
COUNTY OTTAWA

TOWNSHIP Portage

SECTION 36

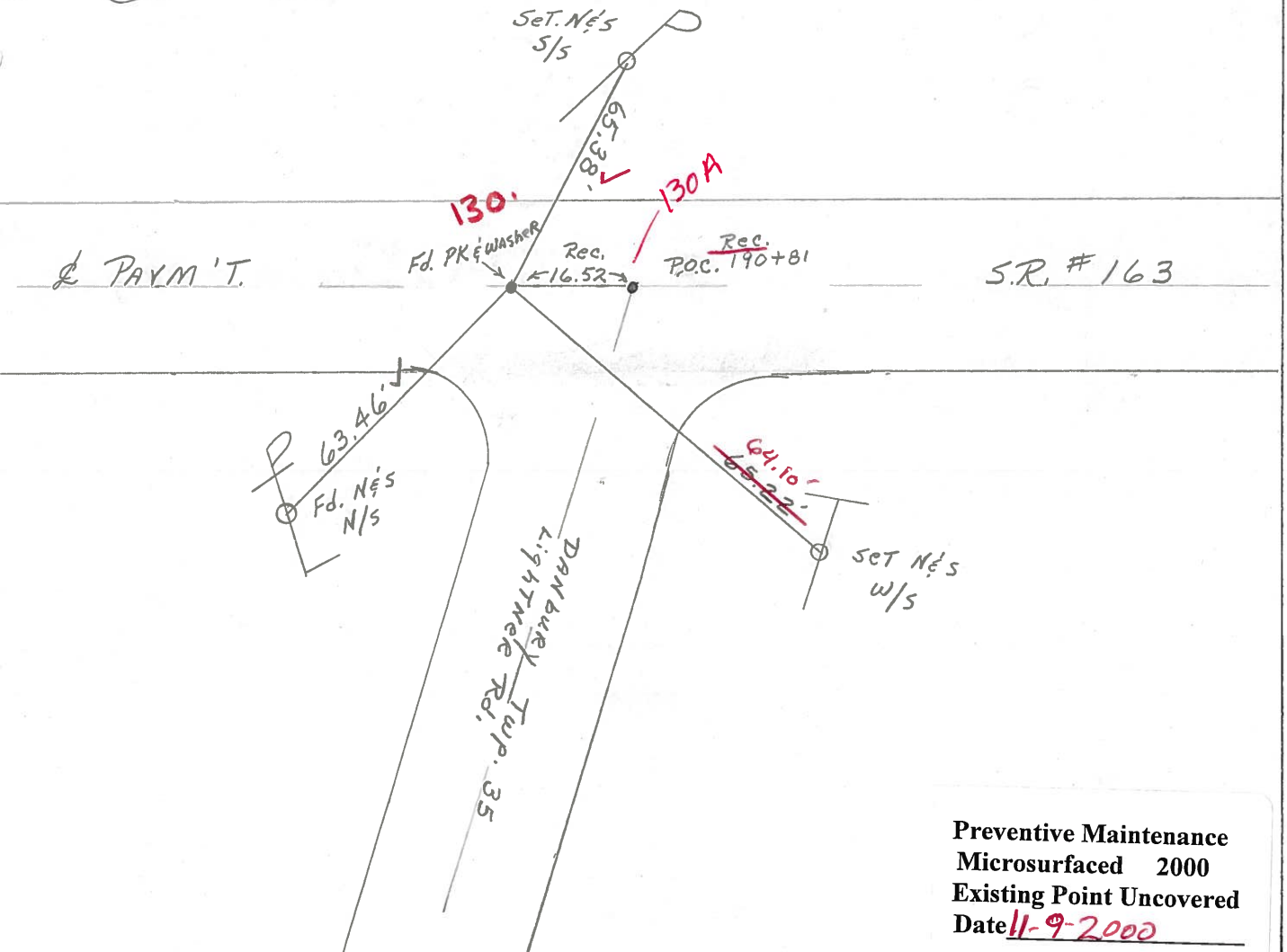
T7 N R 17 E

TYPE MONUMENT Fd. P.K. & Washer
 ON SURFACE - ~~BELOW~~ ON SURFACE
 LEFT - & PAV'T. - RIGHT & PAV'T.
12' TO LT. EDGE PAVEMENT
 S.L.M. 1593 + 65



Record: 9-17-1985
PK. & washer at top PK.
M.C. 190 + 64.48
P.O.C. 190 + 81 Point 4" ± below
Surface.

NOTE: Set PK. & washer
on M.C. 7-14-1993 JLR.
Did NOT dig or get a
PULL with METAL
DETECTOR



Preventive Maintenance
 Microsurfaced 2000
 Existing Point Uncovered
 Date 11-9-2000

O.D.O.T. DISTRICT 2 SURVEY OFFICE

PERSONNEL _____

REFERENCE NO. _____

SHEET 21 OF _____

NOTES Cronin

H.C. Ripplé

R.C. Barbour

Geyman

DATE 9/17/85

WEATHER Sunny

TEMP. 75°

ROUTE #163

COUNTY OTTAWA

TOWNSHIP Portage

SECTION 36

T. 7 N R. 17 E

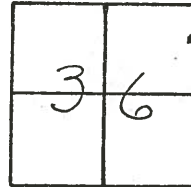
TYPE MONUMENT Pk Washer at top Pk

ON SURFACE - BELOW on surface

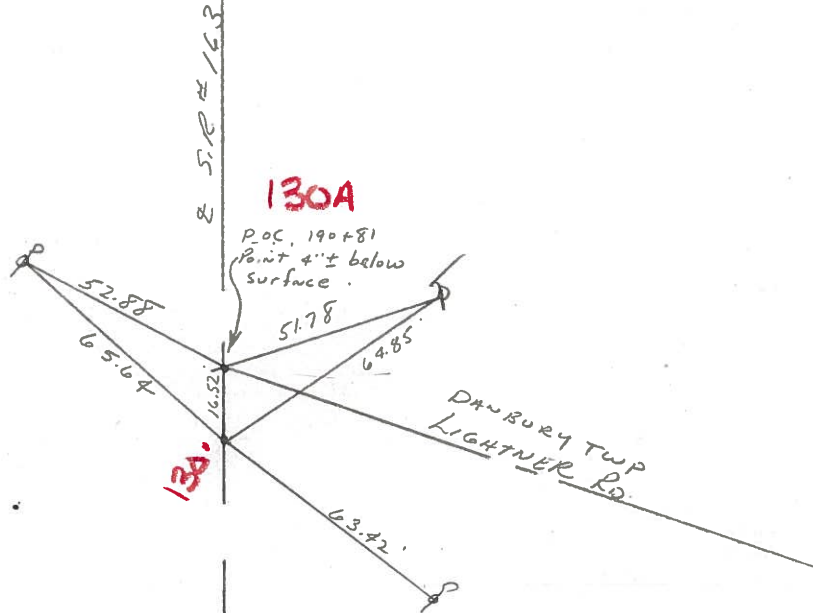
LEFT- & PAW'T. - RIGHT L. Pawt

TO: EDGE PAVEMENT

S.L.M. _____



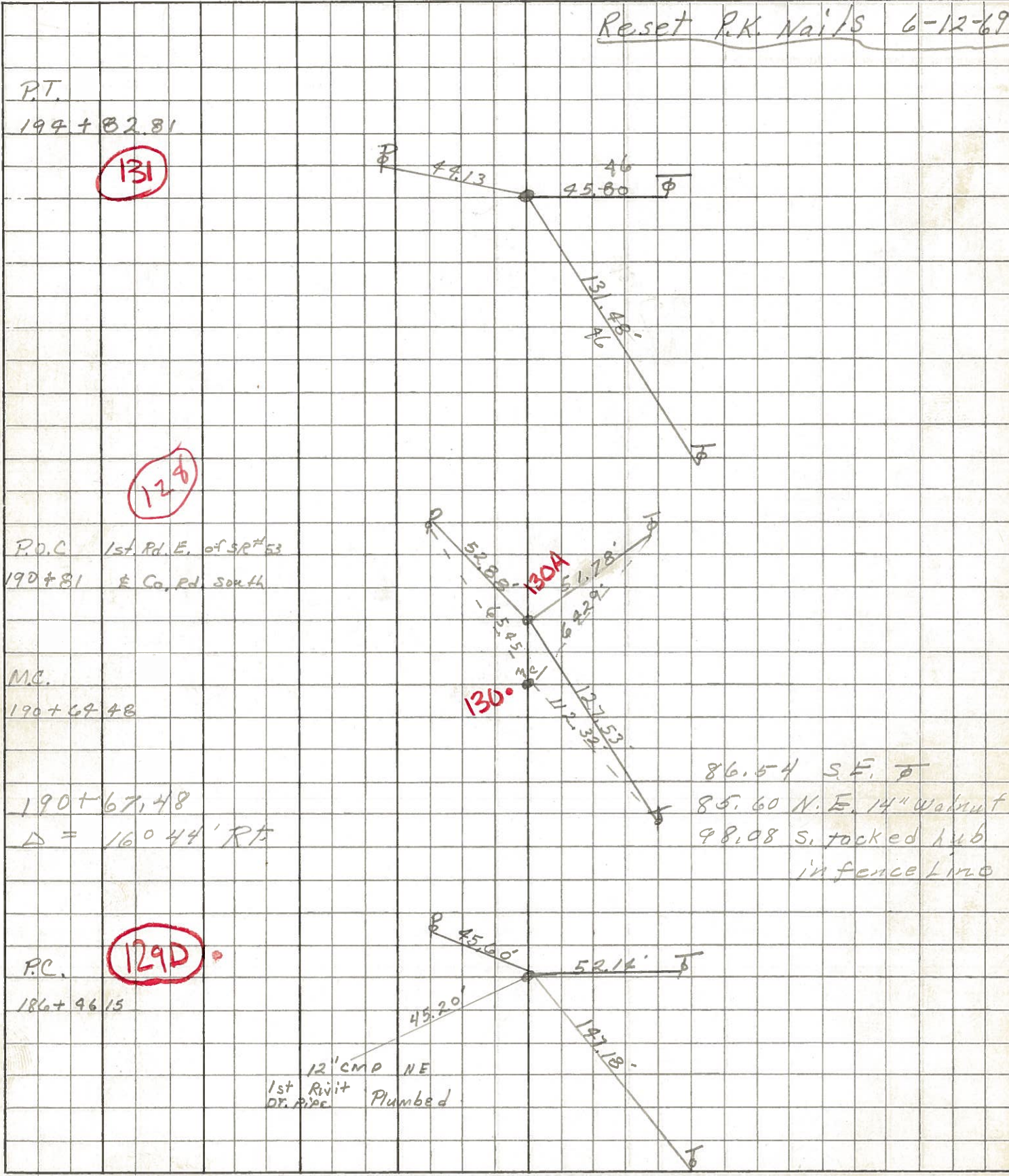
H.C. _____
190+64.48



| PERSONNEL | TITLE | PERSONNEL | TITLE | COUNTY | DATE |
|-----------|-------|-----------|-------|------------------------|---------------|
| Ripple | T | | | Ottawa | |
| Coyne | POD | | | S. R. 143 | WEATHER Clear |
| Anderson | POD | | | SEC. Post-Clinton East | TEMP. 60° |

DESCRIPTION _____ LEFT _____ CENTER LINE _____ RIGHT _____ JOB NO. _____

Reset P.K. Nails 6-12-69



PERSONNEL TITLE PERSONNEL TITLE

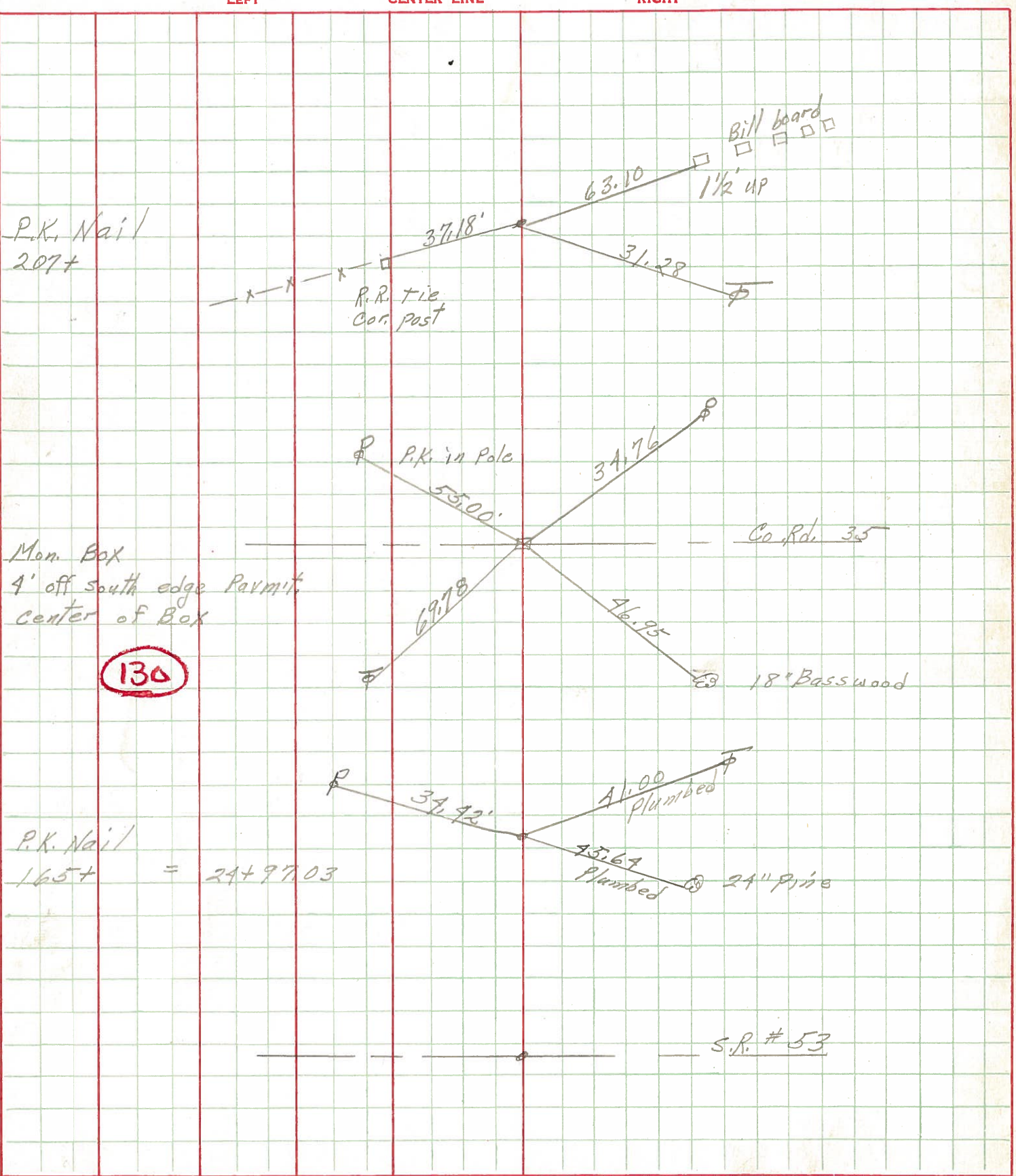
Schneider
Mosser
Barbour

COUNTY Ottawa DATE 6-4-69

S. R. 163 old S.R. 2 WEATHER Fair
East of Port Clinton

SEC. 000-9.30 TEMP. 60°

DESCRIPTION Ties for Central Points JOB NO.



P.K. Nail
207+

R.R. tie
Cor. post

Bill board

Mon. Box
4' off south edge Permit.
center of Box

130

Co. Rd. 35

18" Basswood

P.K. Nail
165+

= 24+97.03

S.R. # 53

| | | | | | |
|------------------|--------------------------------|--------------|-------|----------------------------|---------------|
| PERSONNEL | TITLE | PERSONNEL | TITLE | COUNTY | DATE |
| <u>Schneider</u> | | <u>Potts</u> | | <u>Ottawa</u> | <u>9-9-68</u> |
| <u>Mosser</u> | | | | S. R. | WEATHER |
| <u>Barbour</u> | | | | <u>163</u> | <u>Fair</u> |
| <u>Reeding</u> | | | | SEC. | TEMP. |
| | | | | <u>Port Clinton - East</u> | <u>82°</u> |
| DESCRIPTION | <u>Ties for Control Points</u> | | | | JOB NO. |
| | LEFT | CENTER LINE | RIGHT | | |

| | | | |
|---|--------|--|---|
| 202+98.79 P.K. Nail | (131A) | | 51.32 S.S.E. \neq 80.38 N.E. Dent in C.M.P. dr. pipe 55.08 N.W. shiner in Φ 32.73 "X" on th end of 12" conc. tile south |
| 6359 | | | |
| 1st. Rd. E. of S.R. #53 190+81 & Co. Rd. south | (130A) | | did not find |
| 6358 | | | |
| 190+67.98 $\Delta = 16^\circ 44'$ Rt. | (130) | | 86.54 S.E. \neq 85.60 N.E. 14" walnut 98.08 S. tacked hub in fence line |
| 6357 | | | |
| P.K. Nail 169+15 S.R. #163 608+79.58 S.R. 53 Ahd. 56+98.15 S.R. 53 Bk. | (129) | | Light Pole 11" on top of curb Φ Light Pole S.R. #53 South |
| 6356 | | | |
| P.I. 149+29.00 $\Delta = 5^\circ 21'$ Lt. P.K. Nail | (128G) | | Light Pole 34" Maple 12" Maple Φ 12" Maple Φ 51.92 65.93 74.98 76.71 33.55 |
| 6355 | | | |