

O.D.O.T. DISTRICT 2 SURVEY OFFICE (USE ONLY)

PERSONNEL _____ REFERENCE NO. 131 SHEET 2 OF 66
 NOTES RHOADES DATE 10/1/20 ROUTE SR 163
 H.C. AUBLE WEATHER SUNNY COUNTY OTTAWA
 R.C. O'DONNELL TEMP. 50° TOWNSHIP DANBURY
 SECTION 4-30

DWG BY NIESE PID 107919

TYPE MONUMENT P.K. SHANK

ON SURFACE - ~~BELOW~~ ON

OFFSET Q PAVEMENT 1.5' LT : RT

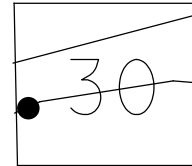
10.0' TO LT EDGE PAVEMENT

STATION: 1597+86

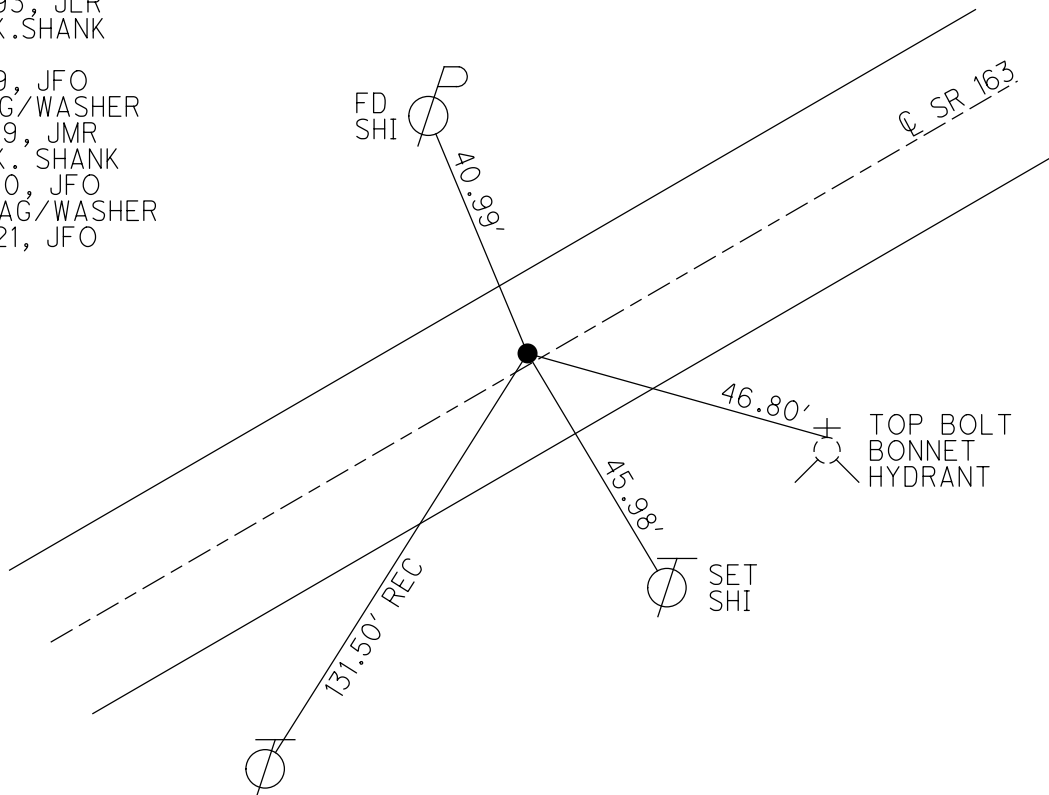
HORIZ.DATUM: NAD83(2011) GEOID: NAVD88 2012A

GRID: NORTHING: 678187.687 EASTING: 1872426.957

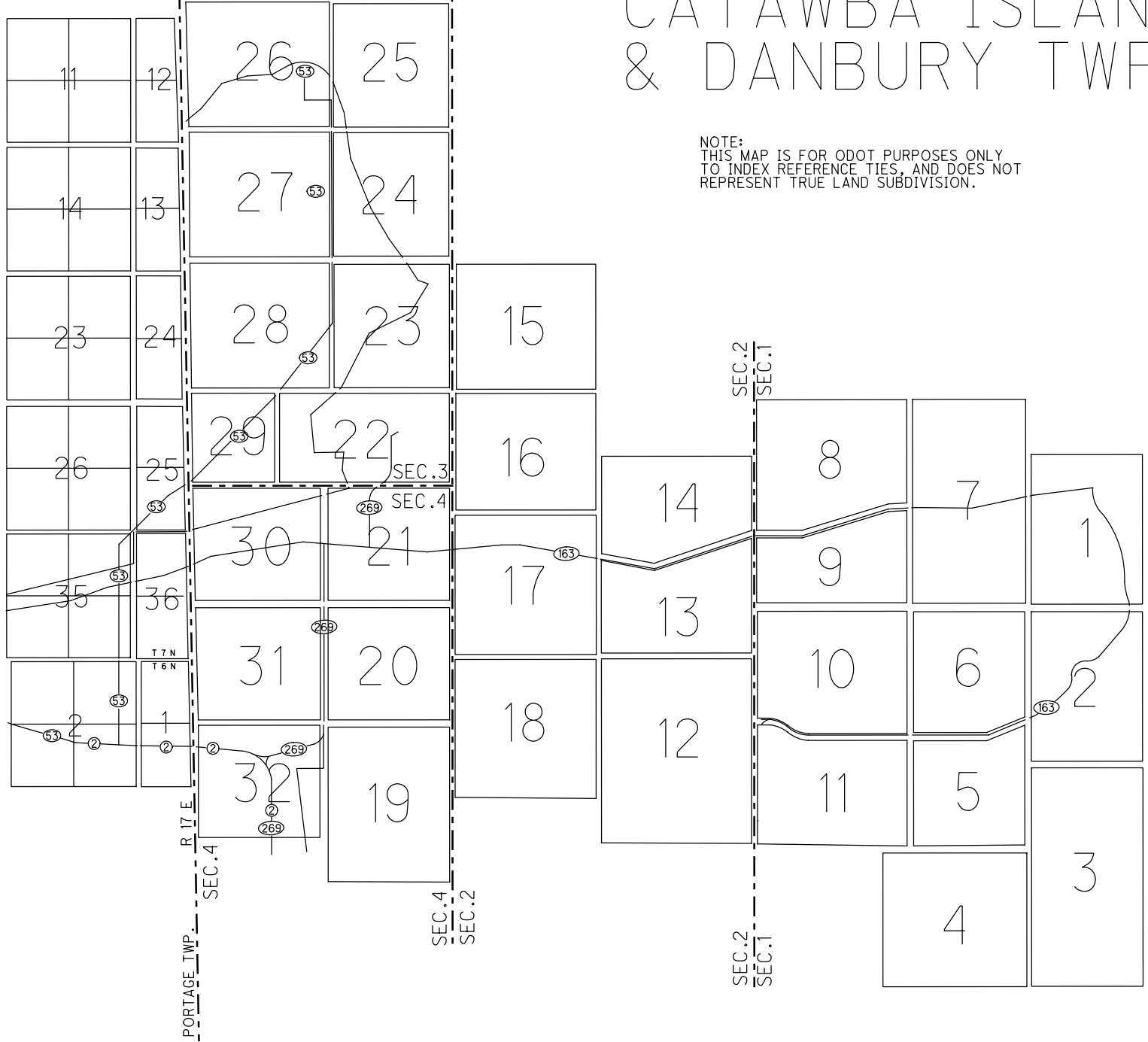
NOTE:
THIS MAP IS FOR ODOT PURPOSES ONLY
TO INDEX REFERENCE TIES, AND DOES NOT
REPRESENT TRUE LAND SUBDIVISION.



RECORD: P.T.
 STA. 194+82.81
 P.K./WASHER
 ATOP P.K./WASHER
 9/17/85
 FD P.K./WASHER
 6/10/93
 SET P.K./WASHER
 7/14/93, JLR
 FD P.K.SHANK
 REF131
 4/2/19, JFO
 FD MAG/WASHER
 9/13/19, JMR
 FD P.K. SHANK
 10/1/20, JFO
 SET MAG/WASHER
 9/13/21, JFO



CONNECTICUT WESTERN RESERVE LINE



CATAWBA ISLAND & DANBURY TWP

NOTE:
THIS MAP IS FOR ODOT PURPOSES ONLY
TO INDEX REFERENCE TIES, AND DOES NOT
REPRESENT TRUE LAND SUBDIVISION.

O.D.O.T. DISTRICT 2 SURVEY OFFICE (USE ONLY)

PERSONNEL	REFERENCE NO. <u>131</u>	SHEET <u>2</u> OF <u>63</u>
NOTES <u>CHENEY</u>	DATE <u>6/10/93</u>	ROUTE <u>SR 163</u>
H.C. <u>RIPPLE</u>	WEATHER <u>CLOUDY</u>	COUNTY <u>OTTAWA</u>
R.C. <u>BARBOUR</u>	TEMP. <u>80°</u>	TOWNSHIP <u>DANBURY</u>
<u>GEYMAN</u>		SECTION <u>4-24</u>
DWG BY <u>NIESE</u>	PID <u>107060</u>	

TYPE MONUMENT P.K./WASHER

ON SURFACE - ~~BELOW~~ ON

OFFSET 1.5' LT : ~~RT~~

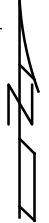
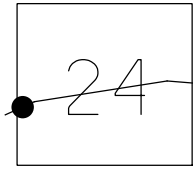
10.0' TO LT EDGE PAVEMENT

STATION: 1597+86

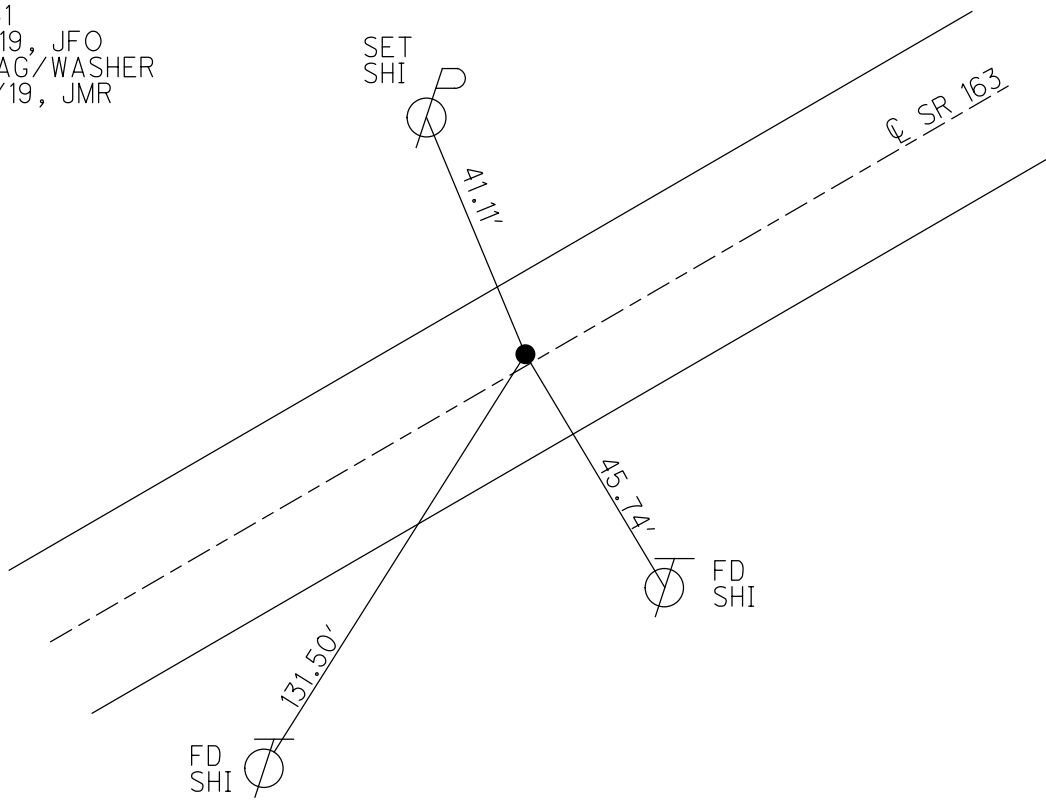
HORZ.DATUM: NAD83(2011) GEOID: 2012A

GRID: NORTHING: 678187.687 EASTING: 1872426.957

NOTE:
THIS MAP IS FOR ODOT PURPOSES ONLY.
TO INDEX REFERENCE TIES, AND DOES NOT
REPRESENT TRUE LAND SUBDIVISION.



RECORD: P.T.
 STA. 194+82.81
 P.K./WASHER
 ATOP P.K./WASHER
 9/17/85
 SET P.K./WASHER
 7/14/93, JLR
 FD P.K.SHANK
 REF131
 4/2/19, JFO
 FD MAG/WASHER
 9/13/19, JMR



O.D.O.T. DISTRICT 2 SURVEY OFFICE (USE ONLY)

PERSONNEL _____

REFERENCE NO. 131

SHEET 2 OF 63

NOTES CHENEY

DATE 6/10/93

ROUTE SR 163

H.C. RIPPLE

WEATHER CLOUDY

COUNTY OTTAWA

R.C. BARBOUR

TEMP. 80°

TOWNSHIP DANBURY

GEYMAN

SECTION 4-24

TYPE MONUMENT P.K./WASHER

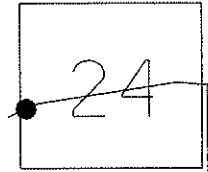
ON SURFACE - ~~BELOW~~ ON

LEFT - Q PAV'T - ~~RIGHT~~ 1.5'

10' TO LT EDGE PAVEMENT

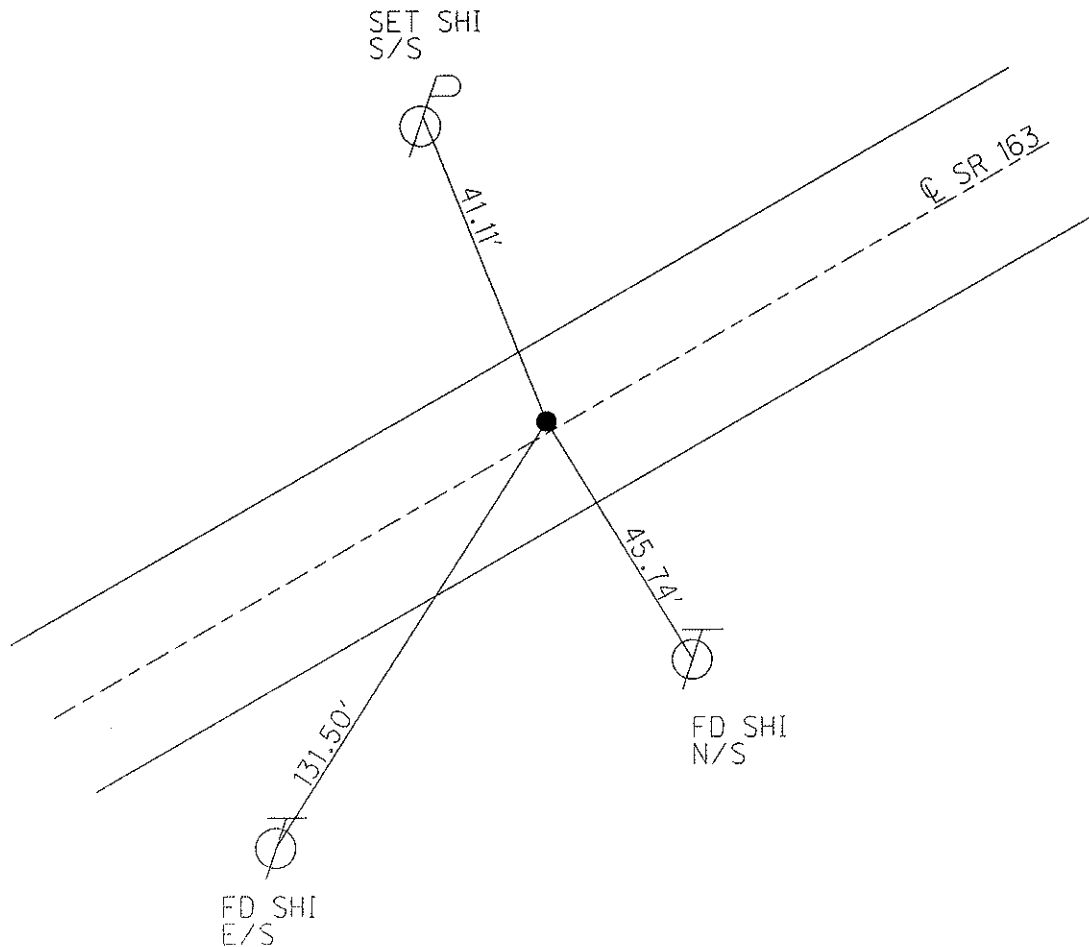
S.L.M. 1597+86

Grid: Northing: _____ Easting: _____



RECORD: 9/17/85
 P.T. 194+82.81
 P.K./WASHER A TOP
 P.K./WASHER

SET P.K./WASHER
 7/14/93, JLR



O.D.O.T. DISTRICT 2 SURVEY OFFICE

PERSONNEL

REFERENCE NO. 131 A

SHEET 23 OF 23

NOTES CHENEY

H.C. RIPPLE

R.C. BARBOUR

GEYMAN

DATE 6-10-1993

WEATHER Cloudy

TEMP. 80°

ROUTE SR#163

COUNTY OTTAWA

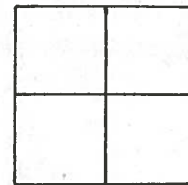
TOWNSHIP DANBURY

SECTION _____

T _____ R _____

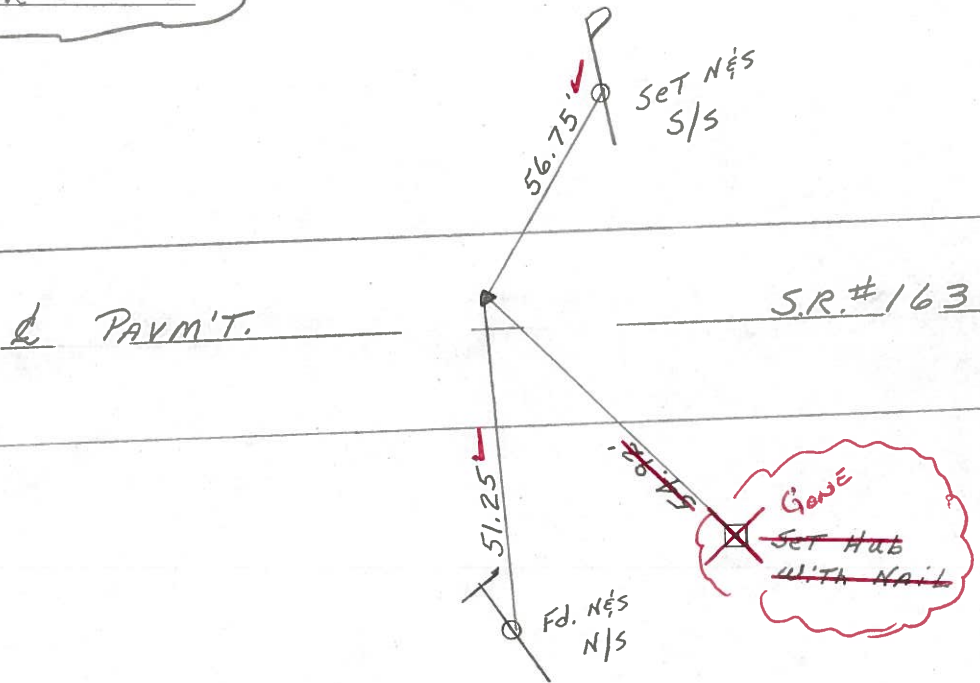
TYPE MONUMENT Fd. P.K., Head Broken off
 ON SURFACE - ~~BELOW~~ ON SURFACE
 LEFT - ¢ PAV'T. - ~~RIGHT~~ 3.5' LT. ¢ PAV'T.
9' TO LT. EDGE PAVEMENT

S.L.M. 1606+05



Record: 9-17-1985
P.I. ?? 202+98.79
P.K. & WASHER ATOP
P.K. & WASHER

NOTE: SET P.K. & WASHER
7-14-1993 J.L.R.



Preventive Maintenance
 Microsurfaced 2000
 Existing Point Uncovered
 Date 11-9-2000

O.D.O.T. DISTRICT 2 SURVEY OFFICE

PERSONNEL

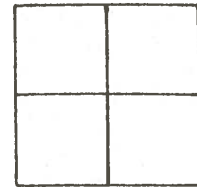
REFERENCE NO. _____ SHEET 23 OF _____

NOTES CROWIN
H.C. RIPPLE
R.C. BARBOUR
GEYMAN

DATE 9/17/85
WEATHER SUNNY
TEMP. 75°

ROUTE #163
COUNTY OTTAWA
TOWNSHIP DANBURY
SECTION _____
T _____ R _____

TYPE MONUMENT P.K. WASHER ATOP P.K. WASHER
ON SURFACE - BELOW ON SURFACE
LEFT - ¢ PAV'T. - RIGHT 3' LT & PAVT.
TO _____ EDGE PAVEMENT
S.L.M. _____



131A



P.I. ??
202 + 98.79

