

O.D.O.T. DISTRICT 2 SURVEY OFFICE (USE ONLY)

PERSONNEL \_\_\_\_\_ REFERENCE NO. 131 A SHEET 3 OF 66  
 NOTES RHOADES DATE 10/1/20 ROUTE SR 163  
 H.C. AUBLE WEATHER SUNNY COUNTY OTTAWA  
 R.C. O'DONNELL TEMP. 50° TOWNSHIP DANBURY  
 SECTION 4-30

DWG BY NIESE PID 107919

TYPE MONUMENT P.K. NAIL

ON SURFACE - ~~BELOW~~ ON

OFFSET 0 PAVEMENT 3.5' LT : ~~RT~~

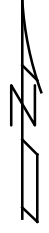
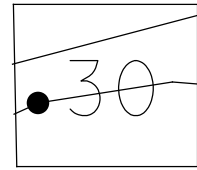
9.0' TO LT EDGE PAVEMENT

STATION: 1606+05

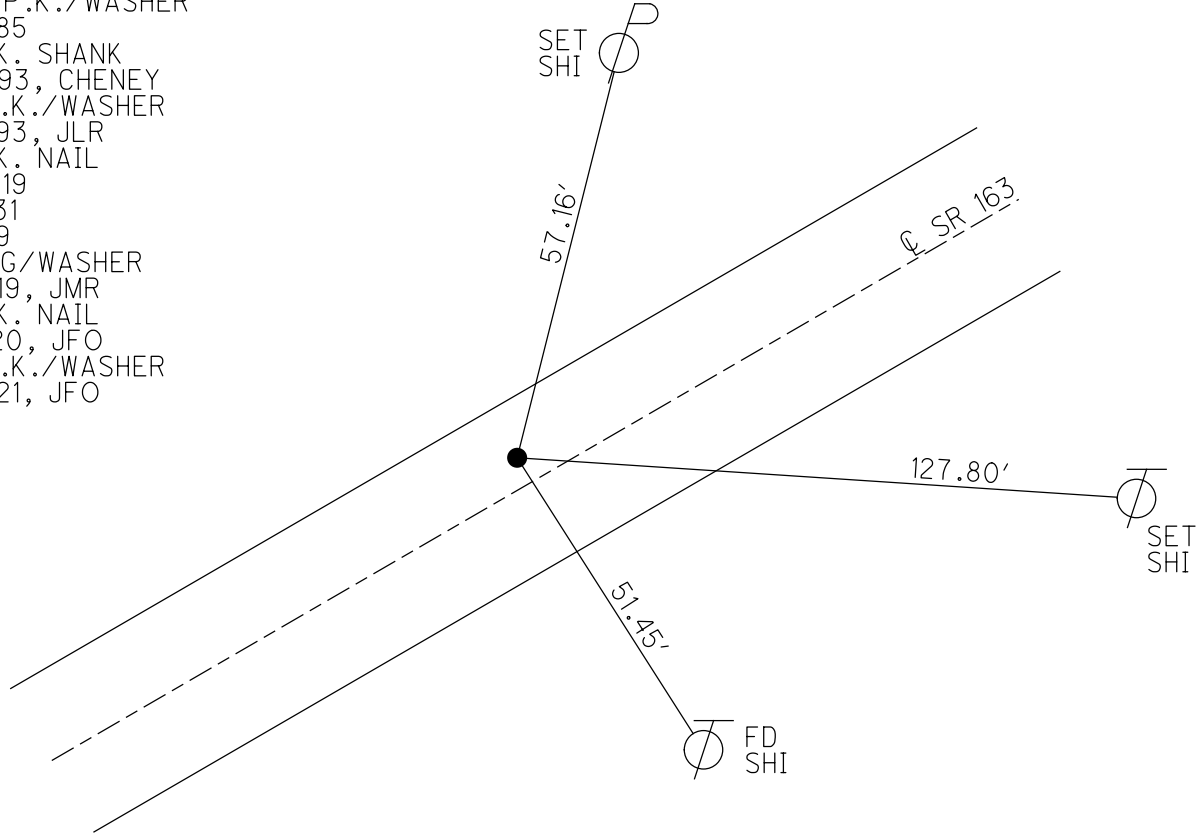
HORZ. DATUM: NAD83(2011) GEOID: NAVD88 2012A

GRID: NORTHING: 678565.782 EASTING: 1873150.151

NOTE:  
THIS MAP IS FOR ODOT PURPOSES ONLY  
TO INDEX REFERENCE TIES, AND DOES NOT  
REPRESENT TRUE LAND SUBDIVISION.



RECORD: P.I.  
 STA.202+98.79  
 P.K./WASHER  
 ATOP P.K./WASHER  
 9/17/85  
 FD P.K. SHANK  
 6/10/93, CHENEY  
 SET P.K./WASHER  
 7/14/93, JLR  
 FD P.K. NAIL  
 2/26/19  
 REFA131  
 4/2/19  
 FD MAG/WASHER  
 9/13/19, JMR  
 FD P.K. NAIL  
 10/1/20, JFO  
 SET P.K./WASHER  
 9/13/21, JFO



O.D.O.T. DISTRICT 2 SURVEY OFFICE (USE ONLY)

PERSONNEL \_\_\_\_\_ REFERENCE NO. 131 A SHEET 3 OF 63  
 NOTES CHENEY DATE 6/10/93 ROUTE SR 163  
 H.C.  RIPPLE WEATHER  CLOUDY COUNTY  OTTAWA  
 R.C.  BARBOUR TEMP.  80° TOWNSHIP  DANBURY  
            GEYMAN SECTION  4-24  
 DWG BY  NIESE PID  107060

TYPE MONUMENT  P.K. SHANK

ON SURFACE - ~~BELOW~~ ON \_\_\_\_\_

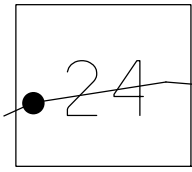
OFFSET  $\varnothing$  PAVEMENT  3.5' LT : ~~RT~~  
 9.0' TO LT EDGE PAVEMENT

STATION:  1606+05

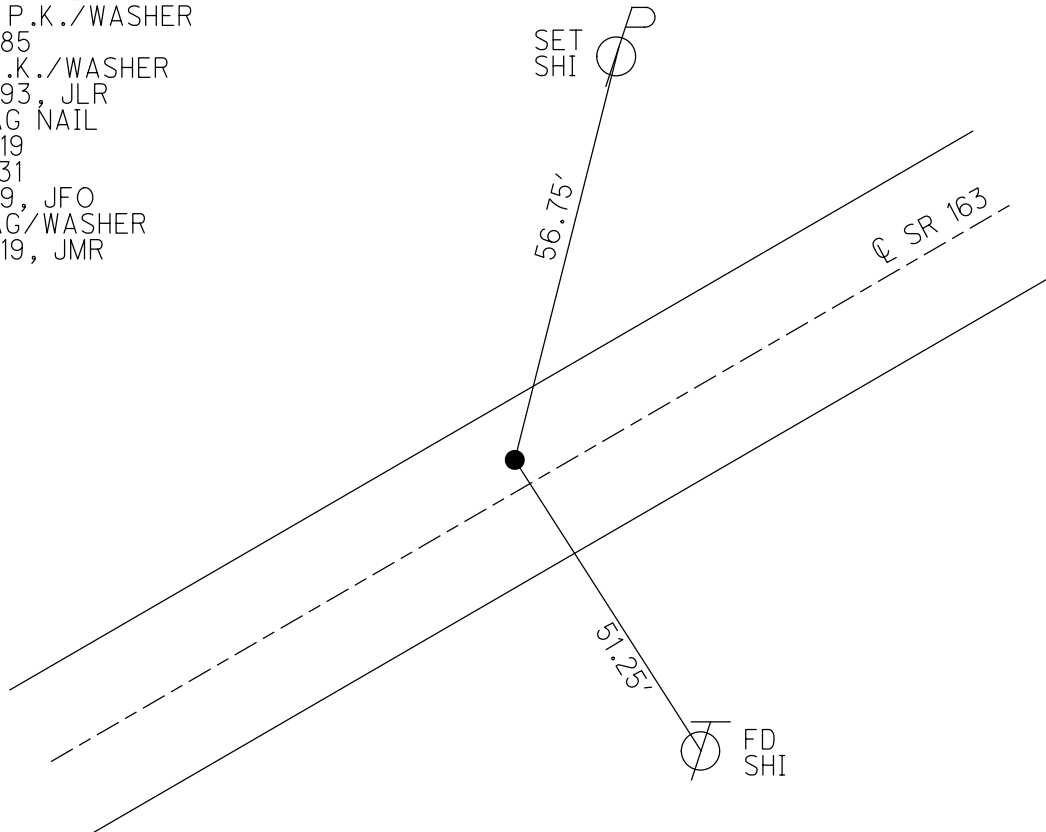
HORIZ.DATUM:  NAD83(2011) GEOID:  2012A

GRID: NORTHING:  678565.782 EASTING:  1873150.151

NOTE:  
THIS MAP IS FOR ODOT PURPOSES ONLY  
TO INDEX REFERENCE TIES, AND DOES NOT  
REPRESENT TRUE LAND SUBDIVISION.



RECORD: P.I.  
 STA. 202+98.79  
 P.K./WASHER  
 ATOP P.K./WASHER  
 9/17/85  
 SET P.K./WASHER  
 7/14/93, JLR  
 FD MAG NAIL  
 2/16/19  
 REFA131  
 4/2/19, JFO  
 FD MAG/WASHER  
 9/13/19, JMR



O.D.O.T. DISTRICT 2 SURVEY OFFICE (USE ONLY)

PERSONNEL

REFERENCE NO. 131 A

SHEET 3 OF 63

NOTES CHENEY

DATE 6/10/93

ROUTE SR 163

H.C. RIPPLE

WEATHER CLOUDY

COUNTY OTTAWA

R.C. BARBOUR

TEMP. 80°

TOWNSHIP DANBURY

GEYMAN

SECTION 4-24

TYPE MONUMENT P.K. SHANK

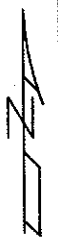
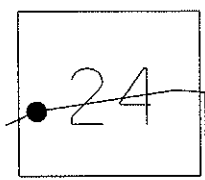
ON SURFACE - ~~BELOW~~ ON

LEFT - Q PAV'T - ~~RIGHT~~ 3.5'

9' TO LT EDGE PAVEMENT

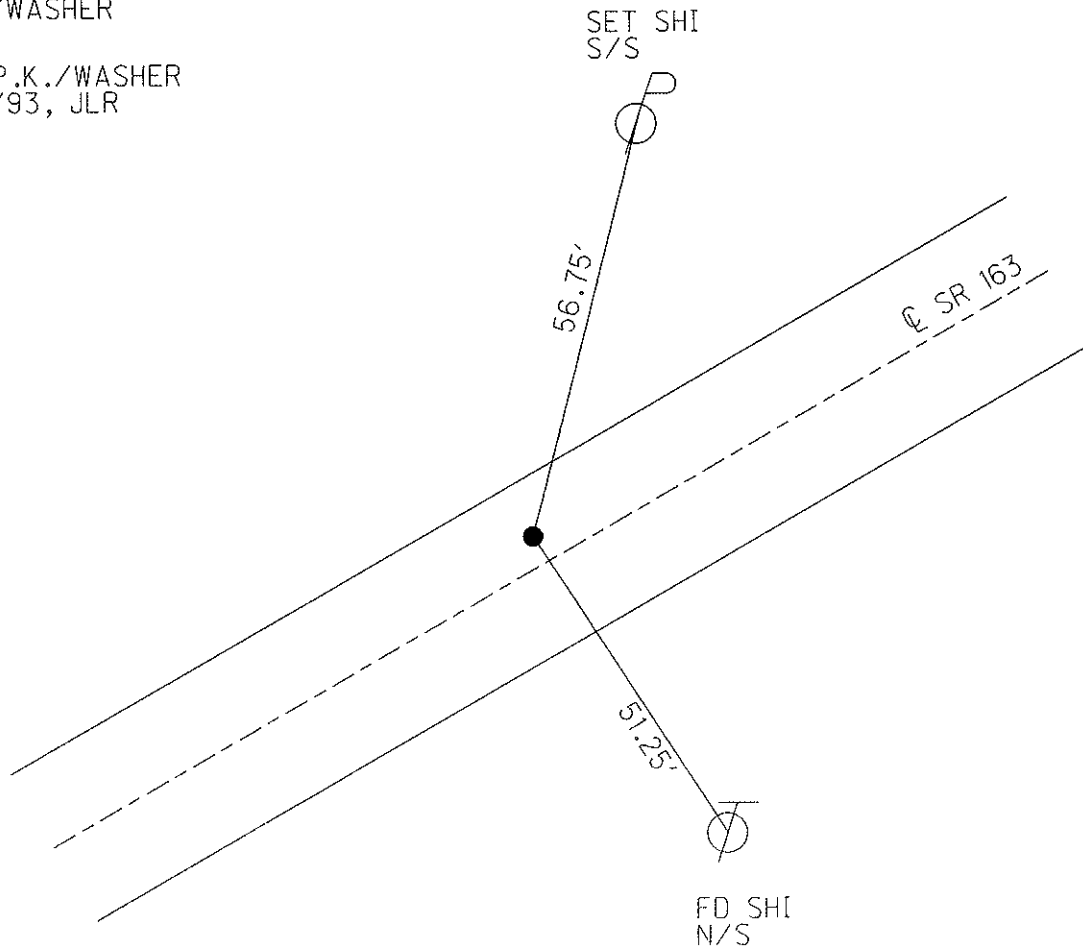
S.L.M. 1606+05

Grid: Northing: \_\_\_\_\_ Easting: \_\_\_\_\_



RECORD: 9/17/85  
P.I. 202+98.79  
P.K./WASHER A TOP  
P.K./WASHER

SET P.K./WASHER  
7/14/93, JLR



PERSONNEL	TITLE	PERSONNEL	TITLE

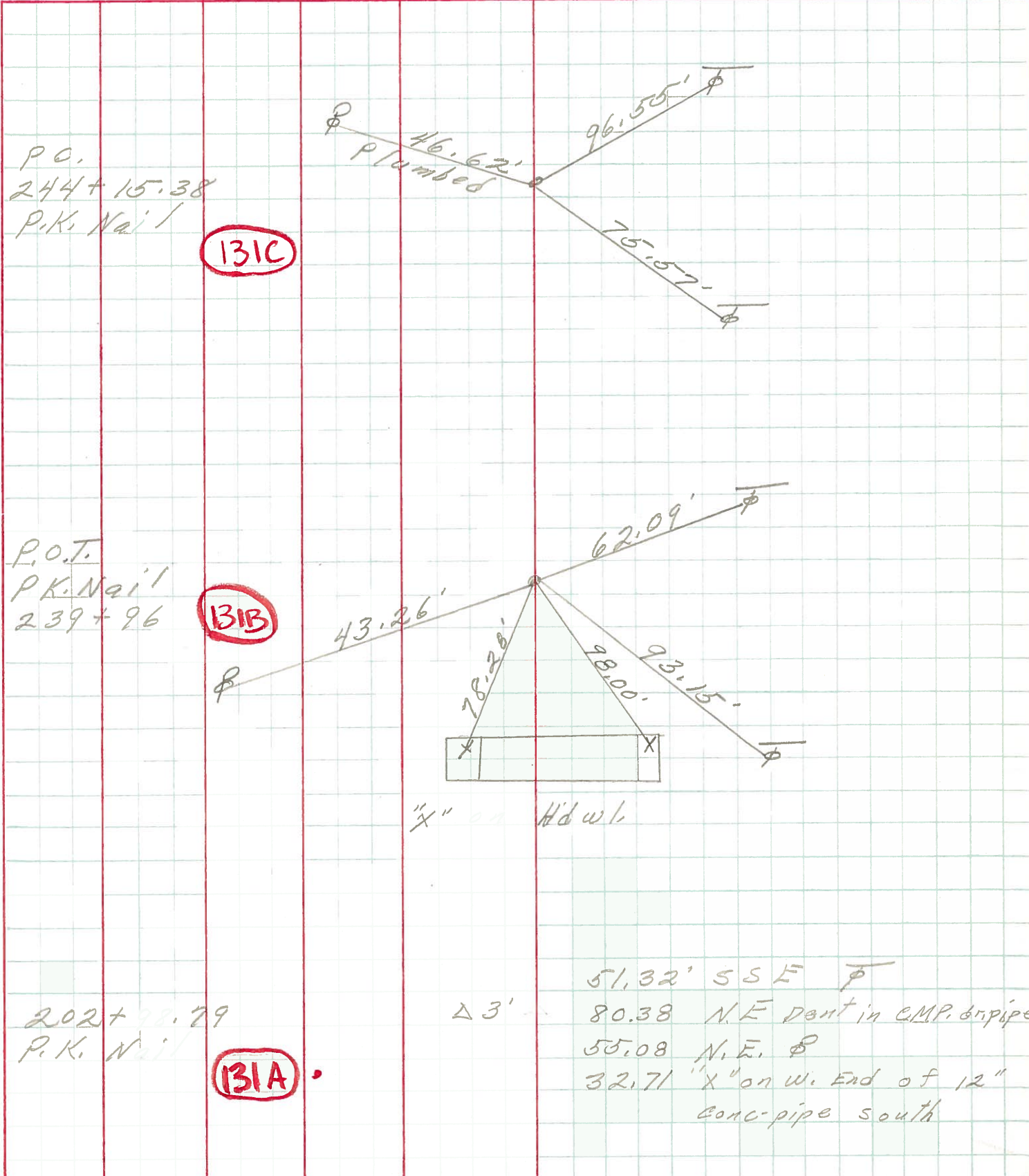
COUNTY Ottawa DATE 6-12-69

S. R. 163 WEATHER \_\_\_\_\_

SEC. 4 TEMP. \_\_\_\_\_

DESCRIPTION Danbury Twp. JOB NO. \_\_\_\_\_

LEFT CENTER LINE RIGHT



PERSONNEL	TITLE	PERSONNEL	TITLE	COUNTY	DATE
Schneider		Potts		Ottawa	9-4-68
Mosser				S. R.	163
Barbour				WEATHER	Fair
Redding				SEC.	Port Clinton - East
DESCRIPTION	Ties for Control Points			TEMP.	82°
	LEFT	CENTER LINE	RIGHT	JOB NO.	

202+98.79 P.K. Nail	(131A)	51.32 S.S.E. $\neq$ 80.38 N.E. Dent in CMP. dr pipe 55.08 N.W. Shiner in $\neq$ 32.73 "X" on <sup>W</sup> end of 12" conc. tile south
6359		
1st. Rd. E. of S.R. #53 190+81 $\neq$ Co. Rd. south	(130A)	did not find
6358		
190+67.48 $\Delta = 16^\circ 44' RT.$	(130)	86.54 S.E. $\neq$ 85.60 N.E. 19" walnut 98.08 S. tacked hub in fence line
6357		
P.K. Nail 169+15 S.R. #163 608+79.58 S.R. 53 Abd. 56+98.15 S.R. 53 BK.	(129)	
6356		
P. I. 149+29.00 $\Delta = 5^\circ 21' Lt.$ P.K. Nail	(128G)	
6355		