

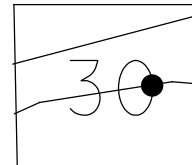
O.D.O.T. DISTRICT 2 SURVEY OFFICE (USE ONLY)

PERSONNEL \_\_\_\_\_ REFERENCE NO. 131 B SHEET 4 OF 66  
 NOTES RHOADES DATE 10/1/20 ROUTE SR 163  
 H.C. AUBLE WEATHER SUNNY COUNTY OTTAWA  
 R.C. O'DONNELL TEMP. 50° TOWNSHIP DANBURY  
 SECTION 4-30

DWG BY NIESE PID 107919

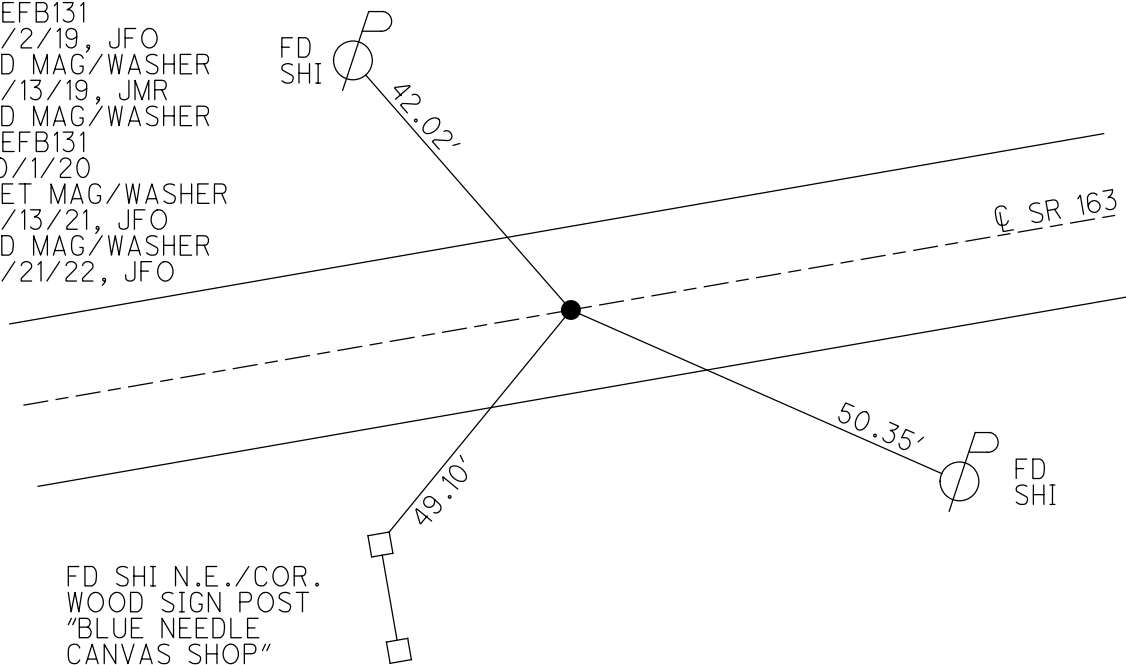
NOTE:  
THIS MAP IS FOR ODOT PURPOSES ONLY  
TO INDEX REFERENCE TIES, AND DOES NOT  
REPRESENT TRUE LAND SUBDIVISION.

TYPE MONUMENT MAG/WASHER  
 ON SURFACE - ~~BELOW~~ ON  
 OFFSET CL PAVEMENT 6" ~~LT~~ : RT  
12.0' TO LT EDGE PAVEMENT  
 STATION: 1640+47.69



HORIZ.DATUM: NAD83(2011) GEOID: NAVD88 2012A  
 GRID: NORTHING: 679503.441 EASTING: 1876710.195

RECORD: P.O.T.  
 STA. 239+96  
 P.K./WASHER  
 ATOP P.K./WASHER  
 FD P.K./WASHER  
 6/10/93, CHENEY  
 SET P.K./WASHER  
 7/14/93, JLR  
 FD P.K./WASHER  
 SVE99  
 9/9/10, JMH  
 SET MAG/WASHER  
 REFB131  
 4/2/19, JFO  
 FD MAG/WASHER  
 9/13/19, JMR  
 FD MAG/WASHER  
 REFB131  
 10/1/20  
 SET MAG/WASHER  
 9/13/21, JFO  
 FD MAG/WASHER  
 4/21/22, JFO

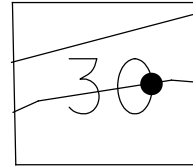


O.D.O.T. DISTRICT 2 SURVEY OFFICE (USE ONLY)

PERSONNEL \_\_\_\_\_ REFERENCE NO. 131 B SHEET 4 OF 66  
 NOTES RHOADES DATE 10/1/20 ROUTE SR 163  
 H.C. AUBLE WEATHER SUNNY COUNTY OTTAWA  
 R.C. O'DONNELL TEMP. 50° TOWNSHIP DANBURY  
 DWG BY NIESE PID 107919 SECTION 4-30

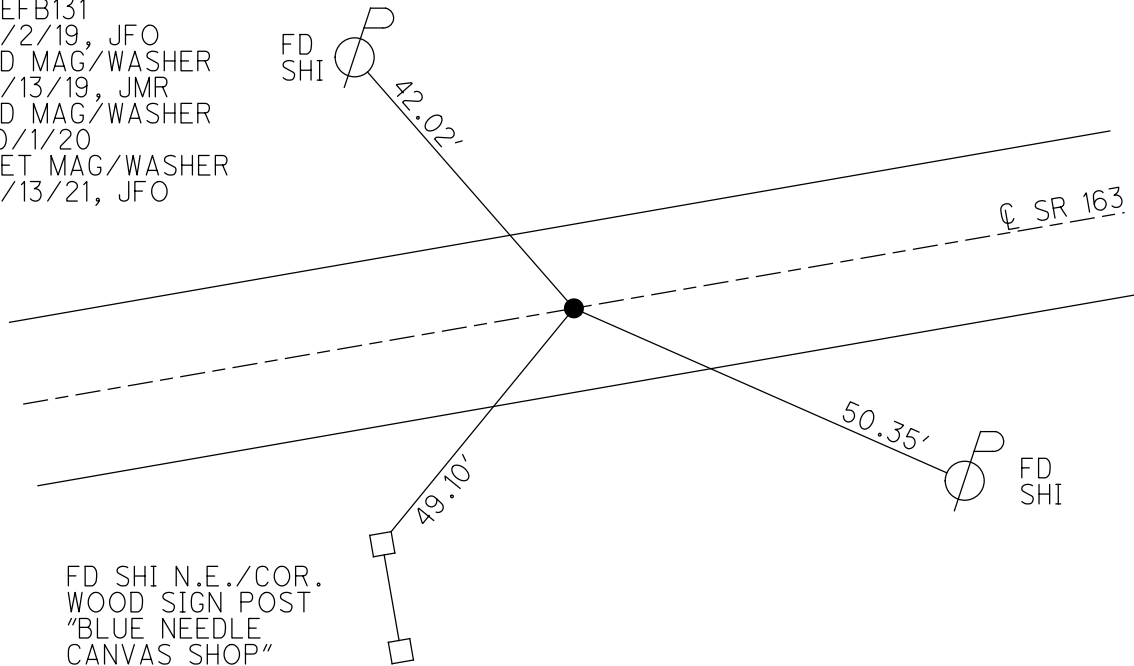
NOTE: THIS MAP IS FOR ODOT PURPOSES ONLY TO INDEX REFERENCE TIES, AND DOES NOT REPRESENT TRUE LAND SUBDIVISION.

TYPE MONUMENT MAG/WASHER  
 ON SURFACE - ~~BELOW~~ ON  
 OFFSET  $\varnothing$  PAVEMENT 6" ~~LT~~ : RT  
12.0' TO LT EDGE PAVEMENT  
 STATION: 1640+47.69



HORIZ.DATUM: NAD83(2011) GEOID: NAVD88 2012A  
 GRID: NORTHING: 679503.441 EASTING: 1876710.195

RECORD: P.O.T.  
 STA. 239+96  
 P.K./WASHER  
 ATOP P.K./WASHER  
 FD P.K./WASHER  
 6/10/93, CHENEY  
 SET P.K./WASHER  
 7/14/93, JLR  
 FD P.K./WASHER  
 SVE99  
 9/9/10, JMH  
 SET MAG/WASHER  
 REFB131  
 4/2/19, JFO  
 FD MAG/WASHER  
 9/13/19, JMR  
 FD MAG/WASHER  
 10/1/20  
 SET MAG/WASHER  
 9/13/21, JFO



O.D.O.T. DISTRICT 2 SURVEY OFFICE (USE ONLY)

PERSONNEL

REFERENCE NO. 131 B

SHEET 4 OF 63

NOTES RHOADES

DATE 4/2/19

ROUTE SR 163

H.C. O'DONNELL

WEATHER CLOUDY

COUNTY OTTAWA

R.C. JAMES

TEMP. 80°

TOWNSHIP DANBURY

SECTION 4-24

DWG BY NIESE PID 107060

TYPE MONUMENT MAG/WASHER

ON SURFACE - ~~BELOW~~ ON

OFFSET  $\odot$  PAVEMENT 6" LT : RT

12.0' TO LT EDGE PAVEMENT

STATION: 1640+47.69

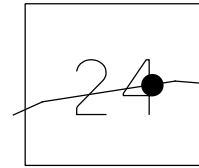
HORZ.DATUM: NAD83(2011)

GEOID: 2012A

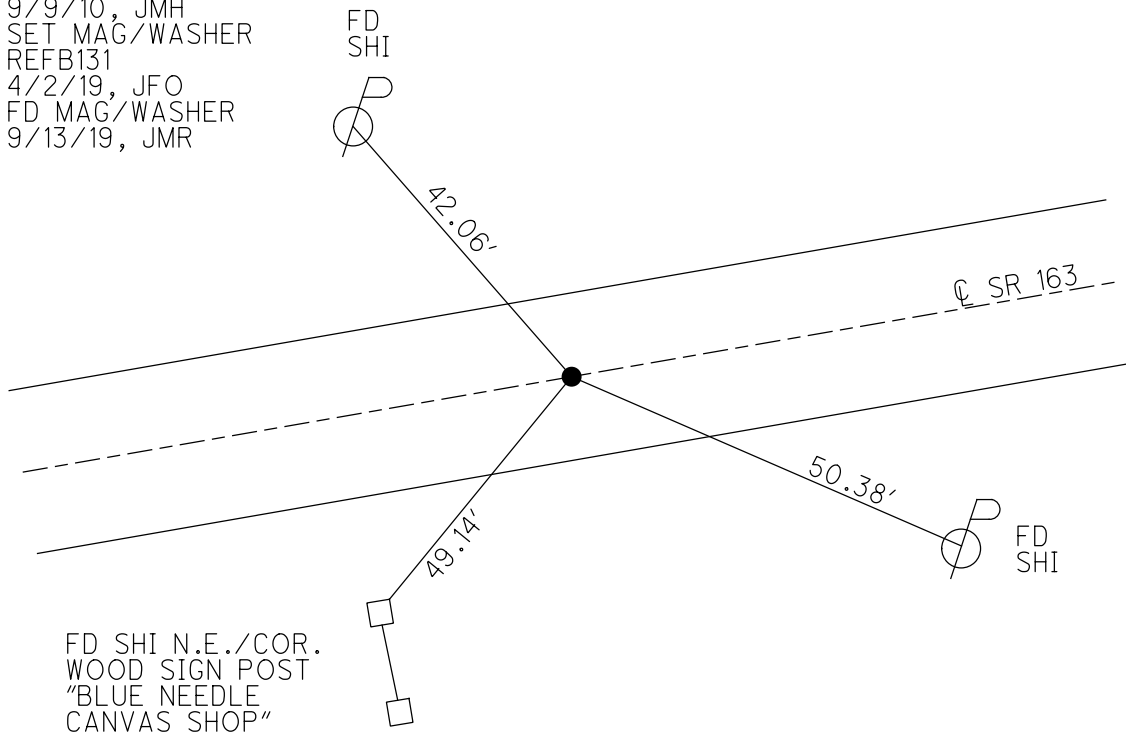
GRID: NORTHING: 679503.441

EASTING: 1876710.195

NOTE:  
THIS MAP IS FOR ODOT PURPOSES ONLY.  
TO INDEX REFERENCE TIES, AND DOES NOT  
REPRESENT TRUE LAND SUBDIVISION.



RECORD: P.O.T.  
STA. 239+96  
P.K./WASHER  
ATOP P.K./WASHER  
FD P.K./WASHER  
6/10/93, CHENEY  
SET P.K./WASHER  
7/14/93, JLR  
SVE99  
9/9/10, JMH  
SET MAG/WASHER  
REFB131  
4/2/19, JFO  
FD MAG/WASHER  
9/13/19, JMR



O.D.O.T. DISTRICT 2 SURVEY OFFICE (USE ONLY)

PERSONNEL

REFERENCE NO. 131 B

SHEET 4 OF 63

NOTES CHENEY

DATE 6/10/93

ROUTE SR 163

H.C. RIPPLE

WEATHER CLOUDY

COUNTY OTTAWA

R.C. BARBOUR

TEMP. 80°

TOWNSHIP DANBURY

GEYMAN

SECTION 4-24

TYPE MONUMENT P.K./WASHER

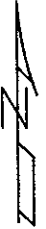
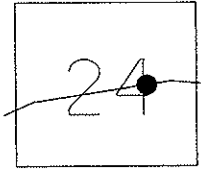
ON SURFACE - ~~BELOW~~ ON

~~LEFT~~ - C PAV'T - RIGHT 6"

12' TO LT EDGE PAVEMENT

S.L.M. 1640+47.69

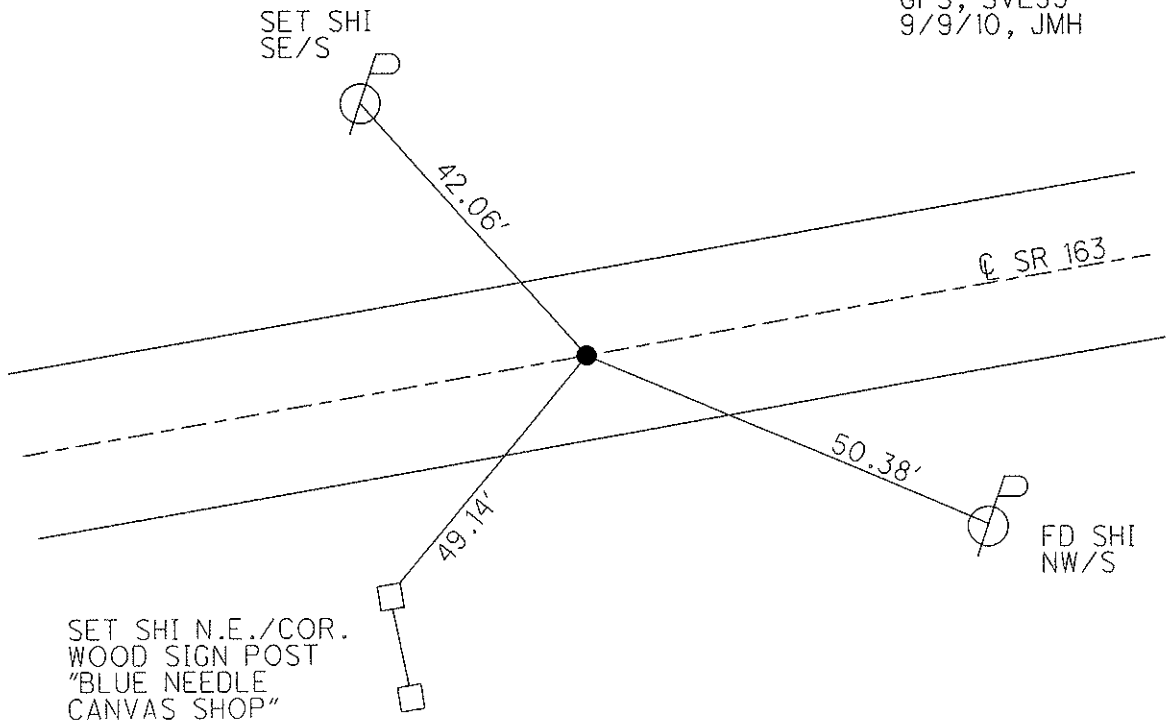
Grid: Northing: 679503.464 Easting: 1876710.108



RECORD: 9/17/85  
P.O.T. 239+96  
P.K./WASHER A TOP  
P.K./WASHER

SET P.K./WASHER  
7/14/93, JLR

GPS, SVE99  
9/9/10, JMH



O.D.O.T. DISTRICT 2 SURVEY OFFICE

PERSONNEL

REFERENCE NO. 131B

SHEET 24 OF 24

NOTES CHENEY

H.C. RIPPLE

R.C. BARBOUR

GEYMAN

DATE 6-10-1993

WEATHER Cloudy

TEMP. 80°

ROUTE S.R. #163

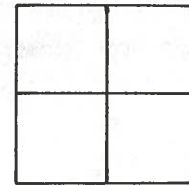
COUNTY OTTAWA

TOWNSHIP DANBURY

SECTION \_\_\_\_\_

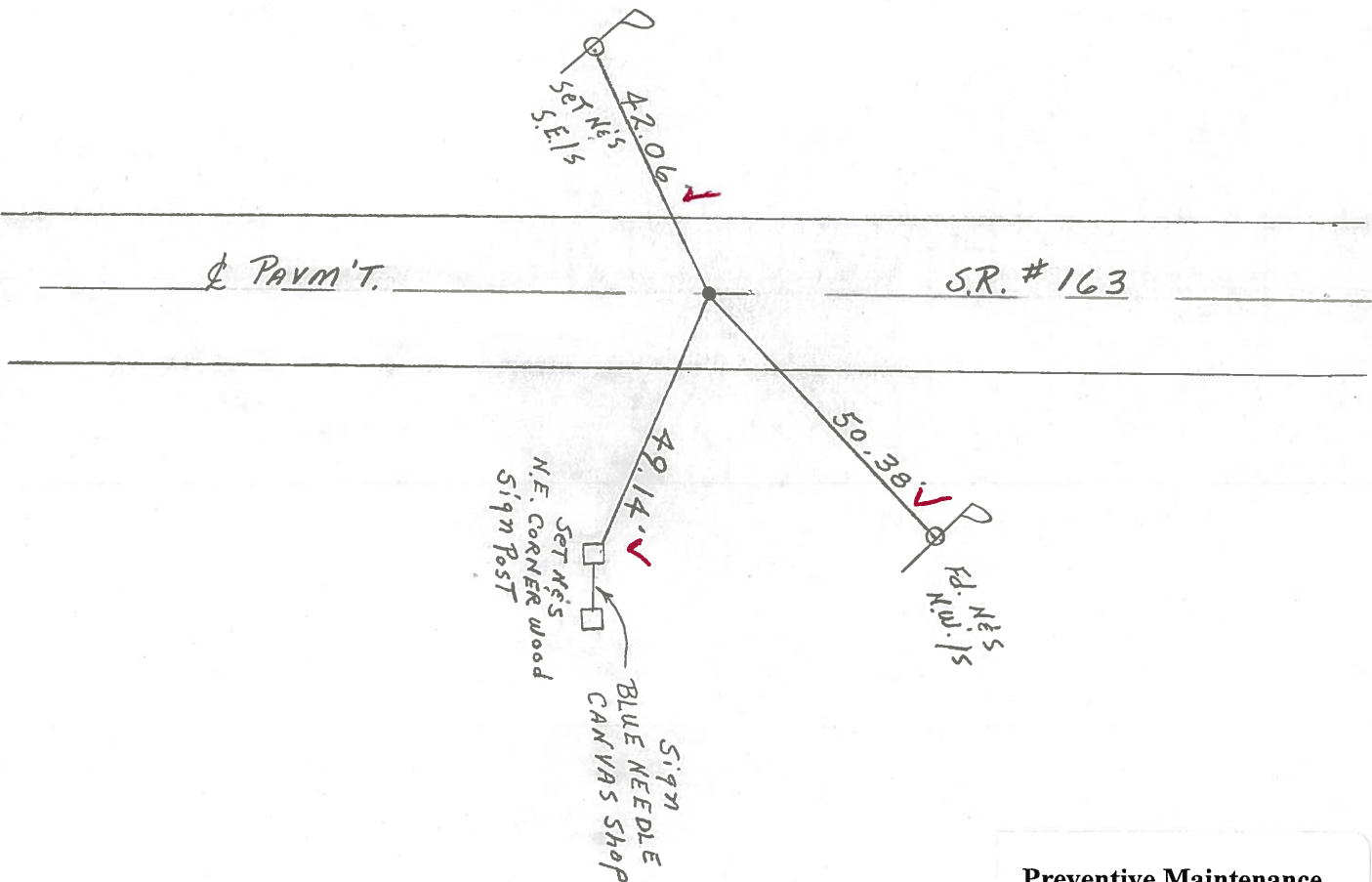
T \_\_\_\_\_ R \_\_\_\_\_

TYPE MONUMENT Fd. P.K. & Washer  
 ON SURFACE - ~~BELOW~~ ON SURFACE  
 LEFT - ~~& PAV'T.~~ & PAV'T.  
12' TO LT. EDGE PAVEMENT  
 S.L.M. 1643 + 16



Record: 9-17-1985  
P.O.T. 239 + 96  
P.K. & WASHER ATOP P.K. & WASHER  
ATOP P.K. NAIL

NOTE: SET P.K. & WASHER  
7-14-1993 JLR.  
END Resurface Project 1993



Preventive Maintenance  
 Microsurfaced 2000  
 Existing Point Uncovered  
 Date 11-9-2000

O.D.O.T. DISTRICT 2 SURVEY OFFICE

PERSONNEL

REFERENCE NO. \_\_\_\_\_

SHEET 27 OF \_\_\_\_\_

NOTES CROWIN

H.C. RIDDLE

R.C. BARBOUR

GEYMAN

DATE 9/17/85

WEATHER SUNNY

TEMP. 75°

ROUTE #163

COUNTY OTTAWA

TOWNSHIP DANBURY

SECTION \_\_\_\_\_

T \_\_\_\_\_ R \_\_\_\_\_

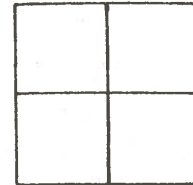
TYPE MONUMENT P.K. WASHER ATOP P.K. WASHER

ON SURFACE - BELOW ON SURFACE

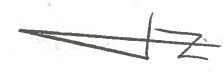
LEFT - & PAV'T. - RIGHT & PAV'T.

TO \_\_\_\_\_ EDGE PAVEMENT

S.L.M. \_\_\_\_\_

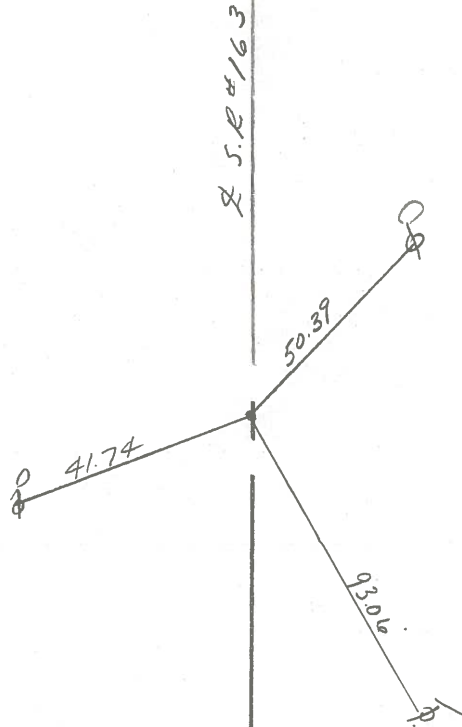


**1318**



P.O.T.

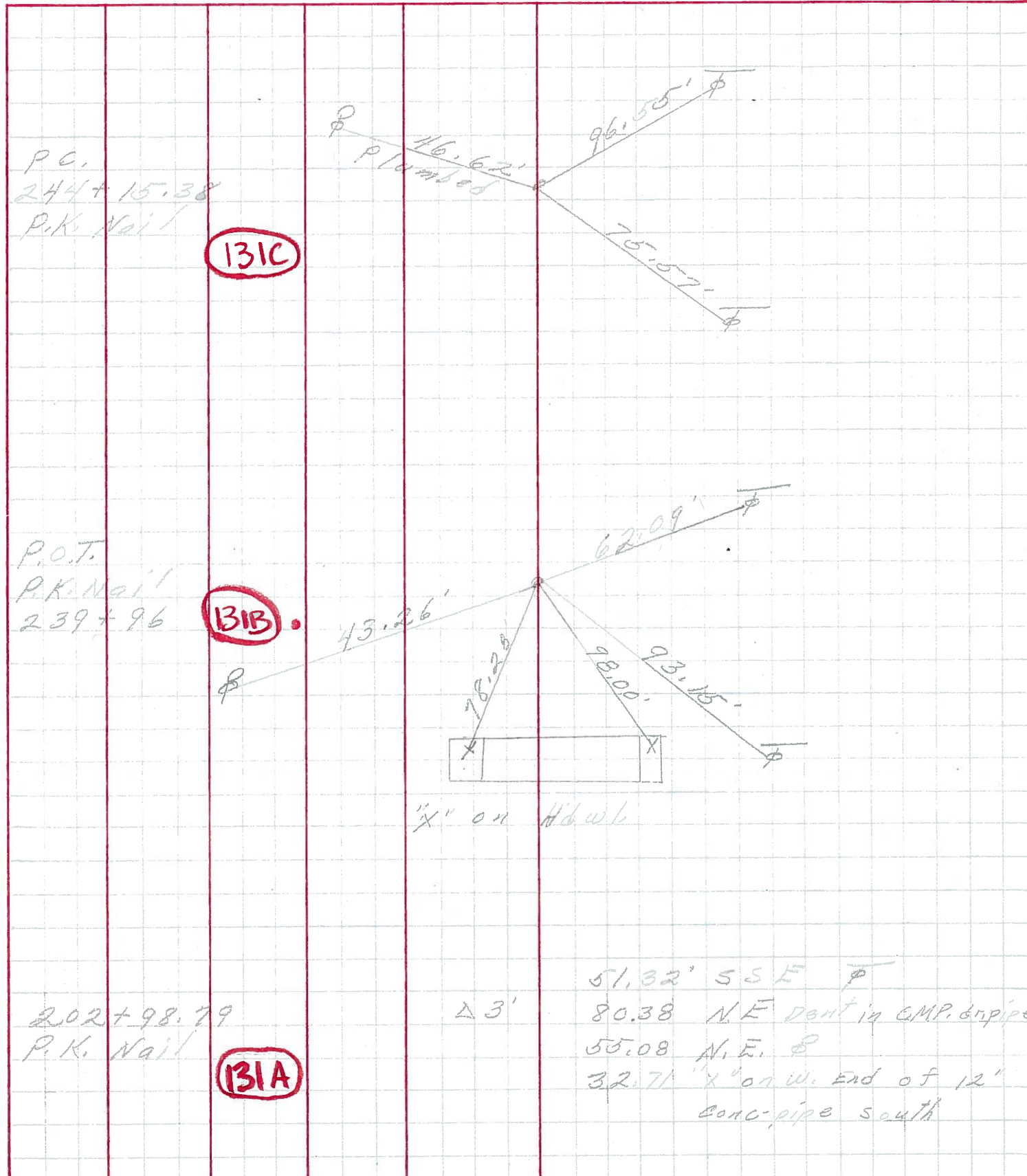
239+96



PERSONNEL	TITLE	PERSONNEL	TITLE	COUNTY	DATE
				Ottawa	6-12-69
				S. R. 163	WEATHER
				SEC. 4	TEMP.

DESCRIPTION Danbury Twp. JOB NO. \_\_\_\_\_

LEFT CENTER LINE RIGHT





PERSONNEL TITLE PERSONNEL TITLE

Schneider  
 Mosser  
 Redding  
 Potts

COUNTY Ottawa DATE 9-5-68  
 S. R. 163 WEATHER cloudy-Rain  
 SEC. Port Clinton-East TEMP. 75°

DESCRIPTION Ties for Control Points JOB NO. \_\_\_\_\_

DESCRIPTION	LEFT	CENTER LINE	RIGHT
P. T. P. K. Nail 248 + 49.82 6363			
P. I. 246 + 33.57 P. R. 5pk. 6362			
P. C. P. K. Nail 244 + 15.38 6361			
P. O. T. P. K. Nail 6360			

131E

131D

131C

131B