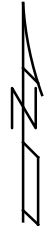
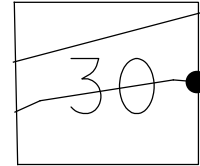


O.D.O.T. DISTRICT 2 SURVEY OFFICE (USE ONLY)

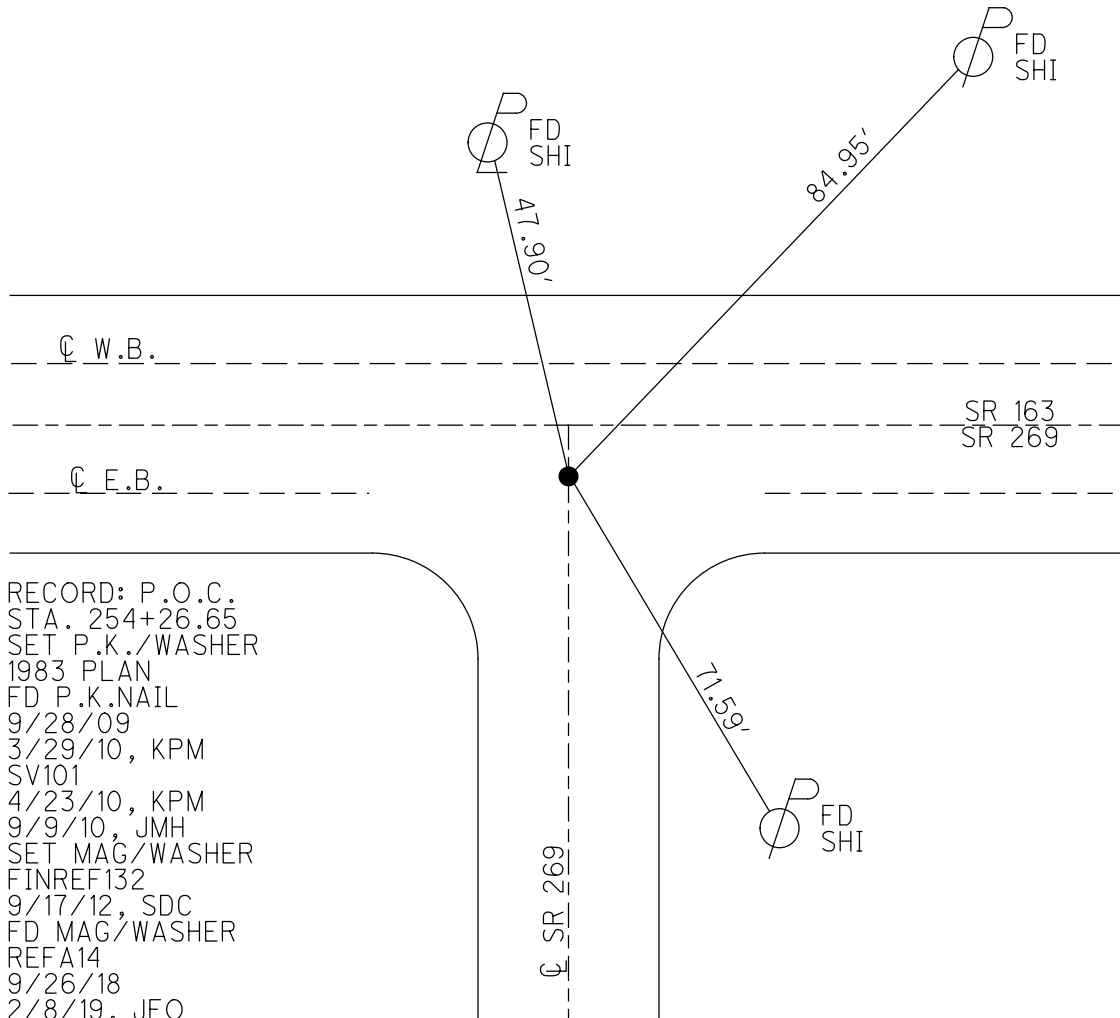
PERSONNEL _____ REFERENCE NO. 132 SHEET 6 OF 66
 NOTES MOSE DATE 5/5/11 ROUTE SR 163
 H.C. MOSE WEATHER SUNNY COUNTY OTTAWA
 R.C. LUMBREZER TEMP. 60° TOWNSHIP DANBURY
 DWG BY NIесе PID 107060 SECTION 4-30

TYPE MONUMENT P.K.NAIL
 ON SURFACE - ~~BELOW~~ ON
 OFFSET C PAVEMENT 13.0' ~~LT~~ : RT
40.9' TO LT EDGE PAVEMENT
 STATION: 1654+75.2
 HORZ.DATUM: - GEOID: -
 GRID: NORTHING: 679603.040 EASTING: 1878125.169

NOTE:
 THIS MAP IS FOR ODOT PURPOSES ONLY
 TO INDEX REFERENCE TIES, AND DOES NOT
 REPRESENT TRUE LAND SUBDIVISION.



NOTE: REF 14 A SR 269



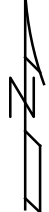
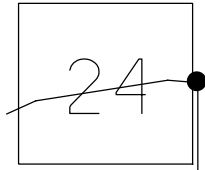
RECORD: P.O.C.
 STA. 254+26.65
 SET P.K./WASHER
 1983 PLAN
 FD P.K.NAIL
 9/28/09
 3/29/10, KPM
 SV101
 4/23/10, KPM
 9/9/10, JMH
 SET MAG/WASHER
 FINREF132
 9/17/12, SDC
 FD MAG/WASHER
 REFA14
 9/26/18
 2/8/19, JFO
 9/13/19, JMR

O.D.O.T. DISTRICT 2 SURVEY OFFICE (USE ONLY)

PERSONNEL	REFERENCE NO.	<u>132</u>	SHEET	<u>6</u>	OF	<u>63</u>
NOTES	DATE	<u>5/5/11</u>	ROUTE	<u>SR 163</u>		
H.C.	WEATHER	<u>SUNNY</u>	COUNTY	<u>OTTAWA</u>		
R.C.	TEMP.	<u>60°</u>	TOWNSHIP	<u>DANBURY</u>		
			SECTION	<u>4-24</u>		

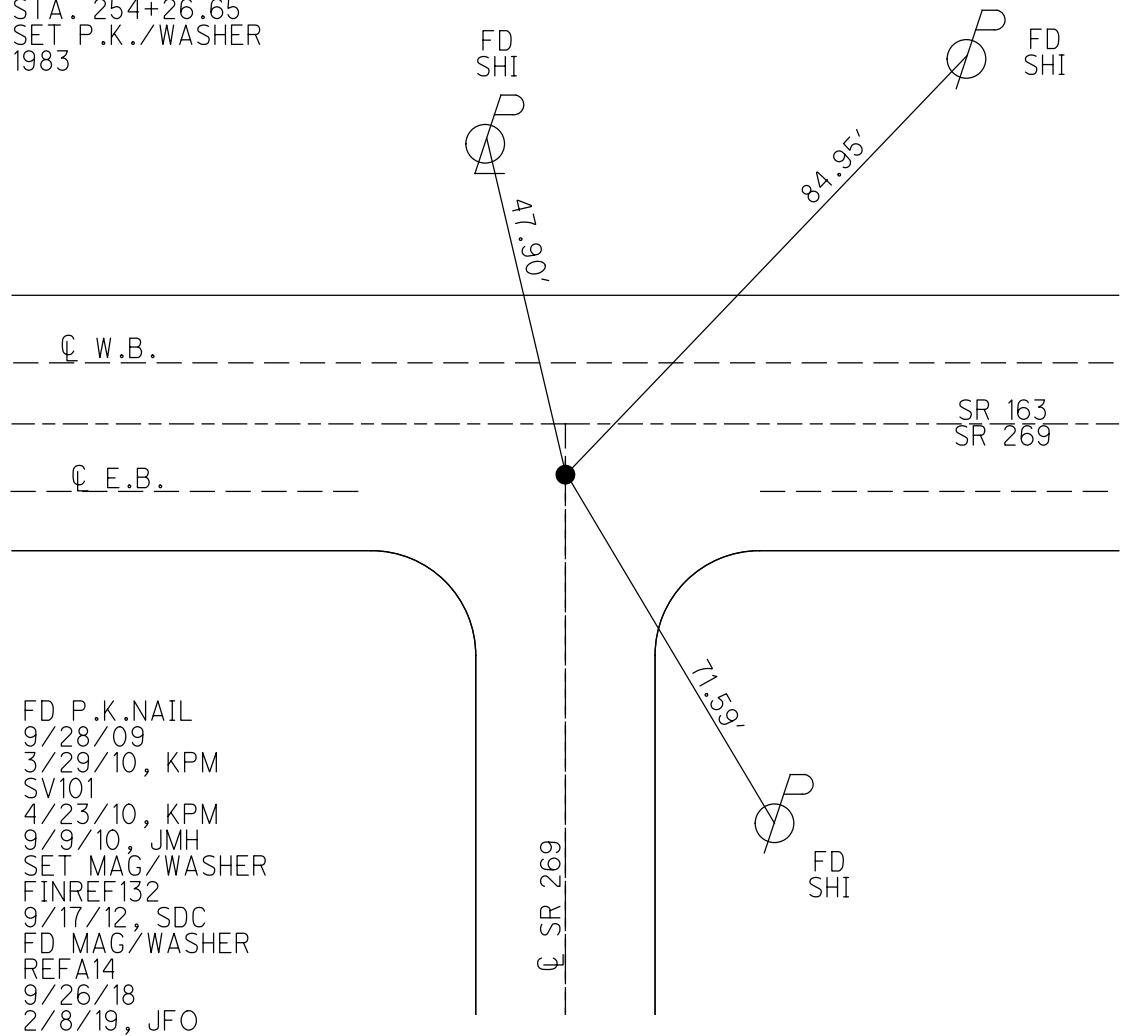
TYPE MONUMENT P.K.
 ON SURFACE - ~~BELOW~~ ON
~~LEFT~~ - PAV'T - RIGHT 13.0'
40.9' TO LT EDGE PAVEMENT
 S.L.M. 1654+75.2
 GRID: NORTHING: 679603.040 EASTING: 1878125.169

NOTE:
THIS MAP IS FOR ODOT PURPOSES ONLY.
TO INDEX REFERENCE TIES, AND DOES NOT
REPRESENT TRUE LAND SUBDIVISION.



NOTE: REF 41A SR 269

RECORD: P.O.C.
 STA. 254+26.65
 SET P.K./WASHER
 1983



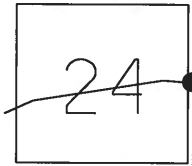
FD P.K.NAIL
 9/28/09
 3/29/10, KPM
 SV101
 4/23/10, KPM
 9/9/10, JMH
 SET MAG/WASHER
 FINREF132
 9/17/12, SDC
 FD MAG/WASHER
 REFA14
 9/26/18
 2/8/19, JFO

O.D.O.T. DISTRICT 2 SURVEY OFFICE (USE ONLY)

PERSONNEL	REFERENCE NO.	132	SHEET	6	OF	63
NOTES	MOSER	DATE	5/5/11	ROUTE	SR 163	
H.C.	MOSER	WEATHER	SUNNY	COUNTY	OTTAWA	
R.C.	LUMBREZER	TEMP.	60°	TOWNSHIP	DANBURY	
				SECTION	4-24	

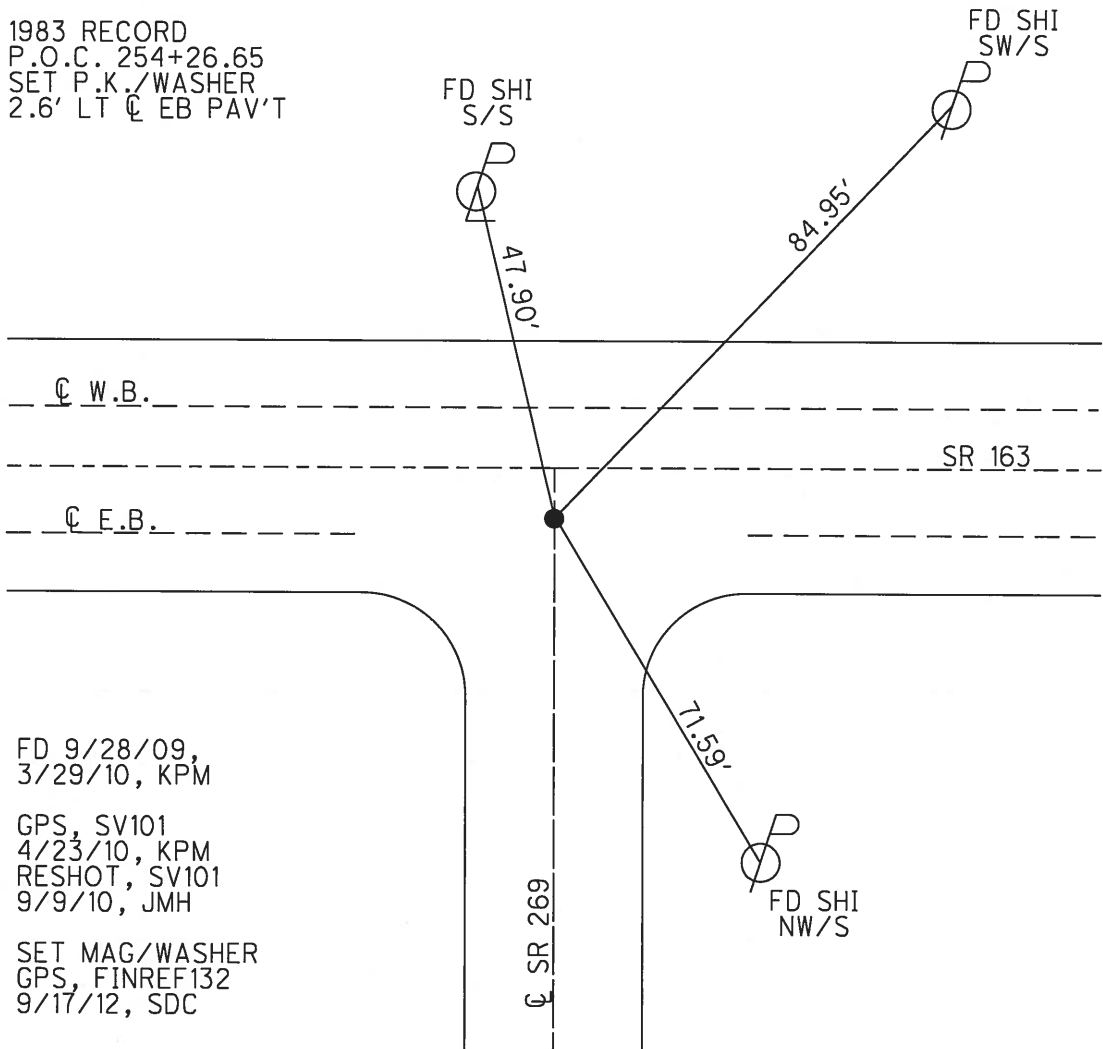
TYPE MONUMENT P.K.
 ON SURFACE - ~~BELOW~~ ON
~~LEFT~~ - CL PAV'T - RIGHT 13.0'
40.9' TO LT EDGE PAVEMENT
 S.L.M. 1654+75.2

NOTE:
THIS MAP IS FOR ODOT PURPOSES ONLY
TO INDEX REFERENCE TIES, AND DOES NOT
REPRESENT TRUE LAND SUBDIVISION.



GRID: NORTHING: 679603.030 EASTING: 1878125.088

1983 RECORD
 P.O.C. 254+26.65
 SET P.K./WASHER
 2.6' LT CL EB PAV'T



FD 9/28/09,
 3/29/10, KPM
 GPS, SV101
 4/23/10, KPM
 RESHOT, SV101
 9/9/10, JMH
 SET MAG/WASHER
 GPS, FINREF132
 9/17/12, SDC

O.D.O.T. DISTRICT 2 SURVEY OFFICE

PERSONNEL

REFERENCE NO. 132

SHEET 1 OF 4

NOTES NUHFER

DATE 8-2-06

ROUTE S.R. 163

H.C. CORDES

WEATHER SUNNY/HOT

COUNTY OTTAWA

R.C. VIETH

TEMP. +87°

TOWNSHIP DANBURY

HUSS

SECTION Conn. West. Reserve

MIKLOVIC

T N R E

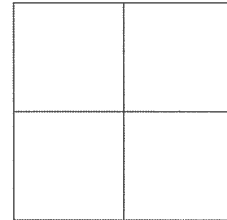
TYPE MONUMENT PK NAIL / WASHER

ON SURFACE -BELOW- SURFACE

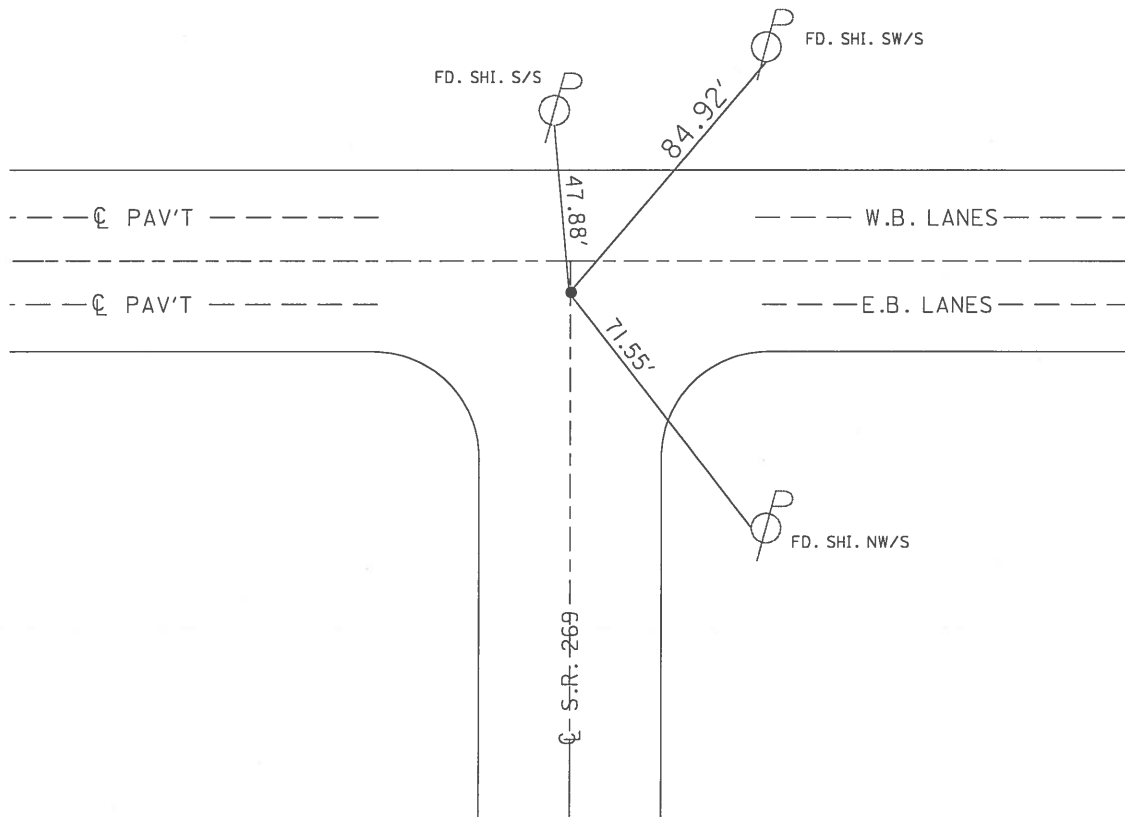
LEFT - ☉ PAV'T - RIGHT 13.0' RT ☉

40.9' TO LT. EDGE PAVEMENT

S.L.M. 1657 + 49



1983 RECORD
P.O.C. 254+26.65
SET PK&WASHER
2.6' LT ☉ EB PAV'T



Project, update, 2006

O.D.O.T. DISTRICT 2 SURVEY OFFICE

PERSONNEL

REFERENCE NO. 132

SHEET 2 OF 52

NOTES CANTERBURY

H.C. LOHRKE

R.C. ROUSOS

DATE 5-17-95

WEATHER CLOUDY

TEMP. ± 70° F

ROUTE S.R. 163

COUNTY OTTAWA

TOWNSHIP DAWBURY

SECTION Conn. West. Reserve

T R

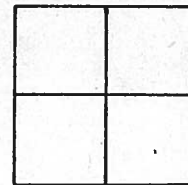
TYPE MONUMENT PK NAIL / WASHER ^{Reset} 6-#-96

ON SURFACE - ~~BELOW~~ ON SURFACE

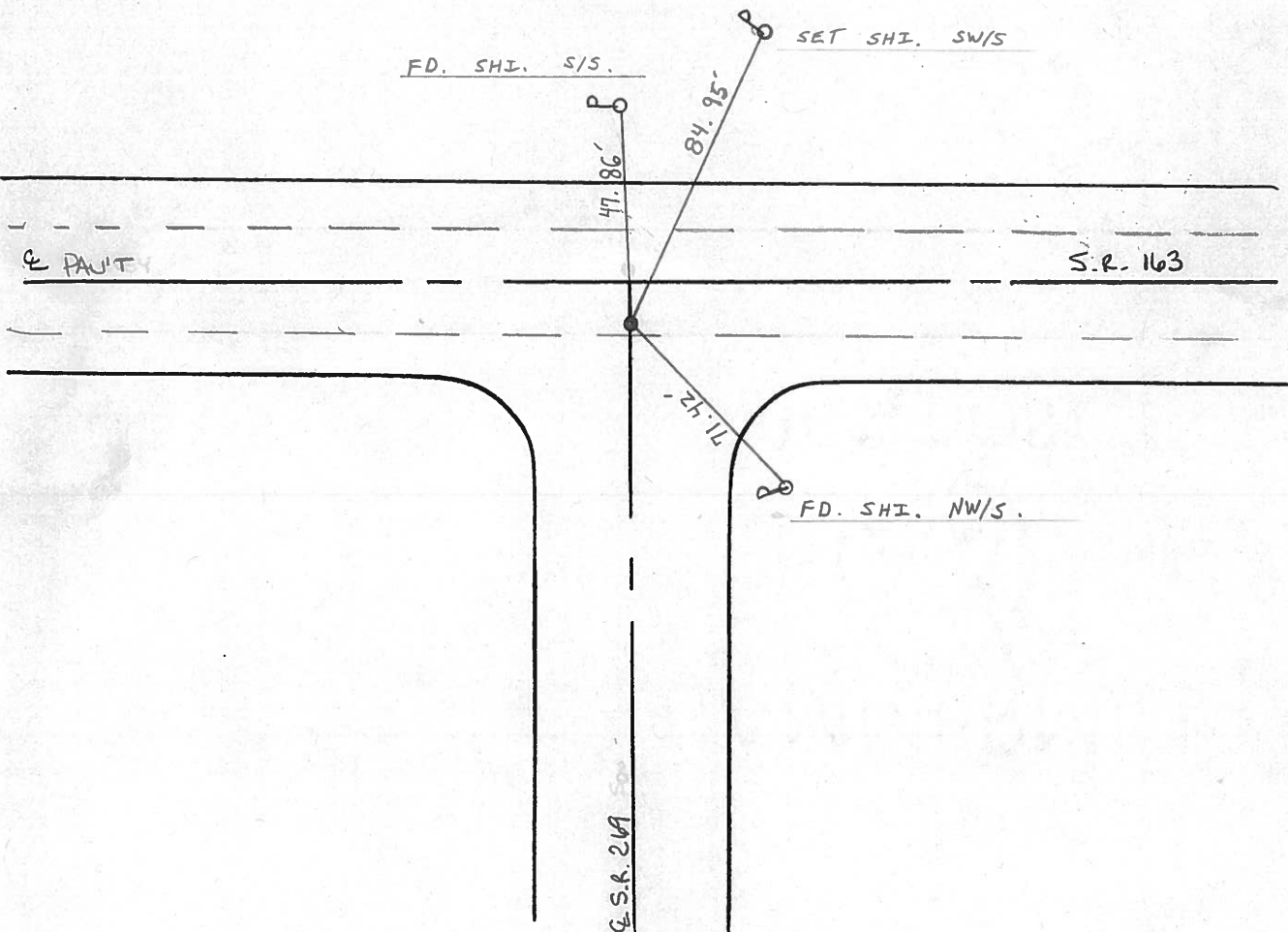
LEFT - ☉ PAVT. - RIGHT 13.0 RT. ☉ PAVT.

40.9 TO LT EDGE PAVEMENT

S.L.M. 1657 + 49



1983 RECORD
P.O.G.
254+26.65
SET PK & WASHER
2.6' LT & EB PAVT



Resurfaced 1996

Q.D.O.T. DISTRICT 2 SURVEY OFFICE

SHEET 1 OF

County Ottawa S.R. #163

Date 11/21/83

Township Danbury

Weather sunny - windy

Section

Temp. 44°

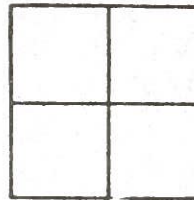
T N, R E

Personnel Cronin

Ripple

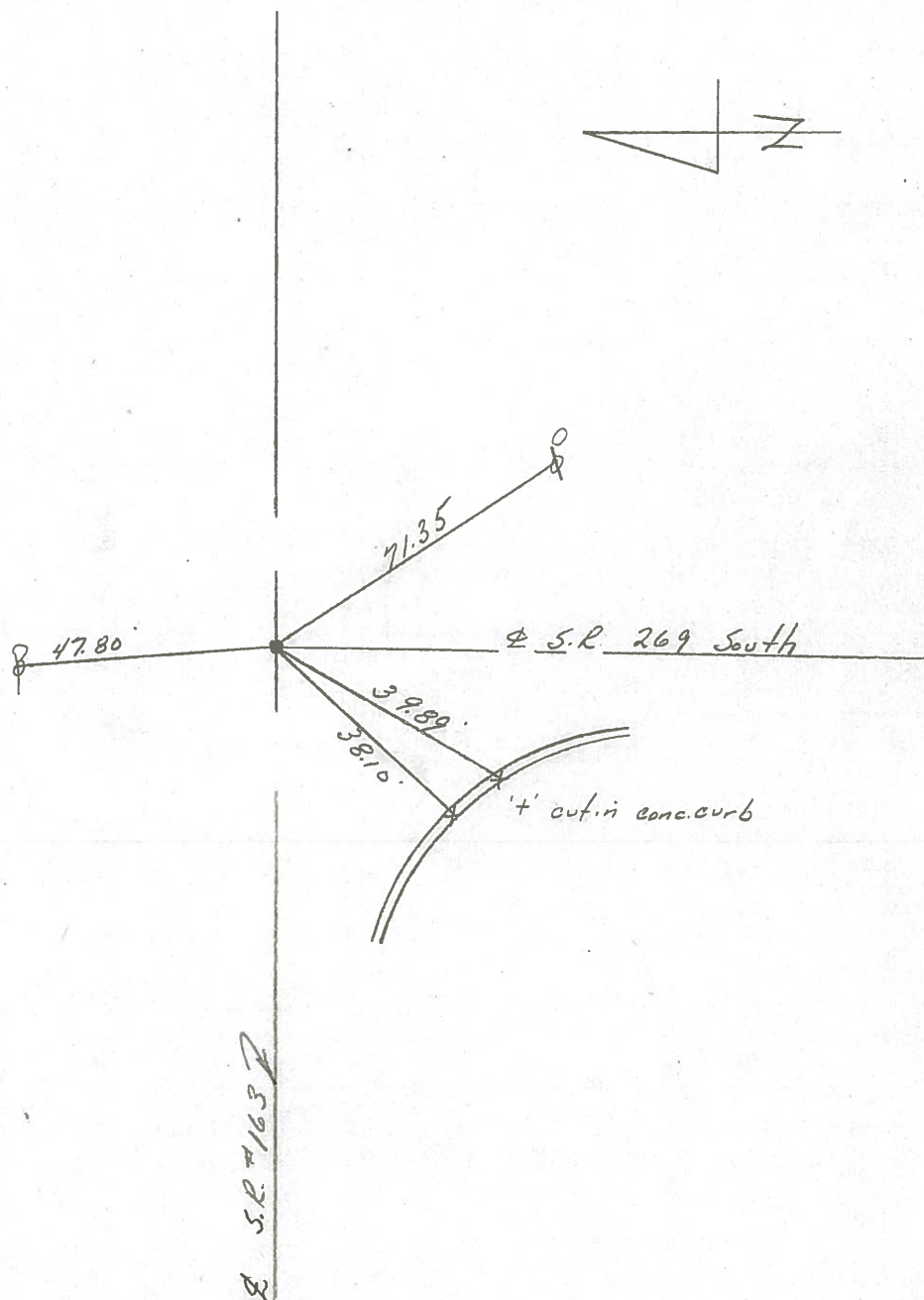
Geyman

Barbour



#132

P.O.C.
254 + 2565
Set P.K. & washer
2.6 ft & E.B. Paint



S.R. #163

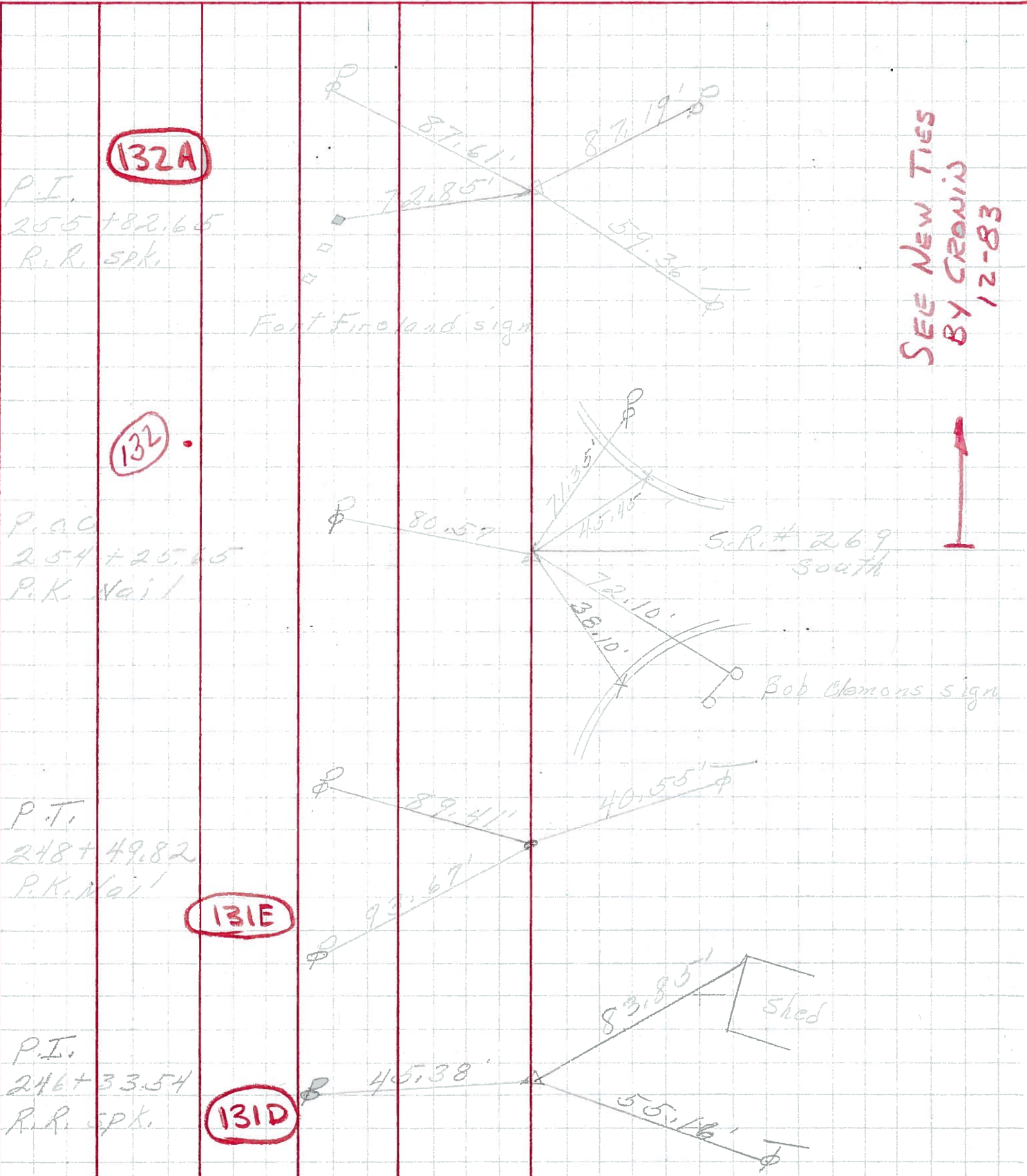
PERSONNEL TITLE PERSONNEL TITLE

COUNTY Ottawa DATE 6-12-69

S. R. 163 WEATHER _____

SEC. 4 TEMP. _____

DESCRIPTION Danbury Twp. JOB NO. _____



PERSONNEL	TITLE	PERSONNEL	TITLE	COUNTY	DATE	WEATHER	TEMP.
Schneider		Potts		Ottawa	9-5-68	Cloudy	80°
Mosser				S. R. 163			
Barbour				SEC. Port Clinton - East			
Redding							

DESCRIPTION Ties for Control Points JOB NO. _____

