

O.D.O.T. DISTRICT 2 SURVEY OFFICE (USE ONLY)

PERSONNEL \_\_\_\_\_ REFERENCE NO. 132 A SHEET 7 OF 66  
 NOTES MOSER DATE 5/5/11 ROUTE SR 163  
 H.C. MOSER WEATHER SUNNY COUNTY OTTAWA  
 R.C. LUMBREZER TEMP. 60° TOWNSHIP DANBURY  
 SECTION 4-21

DWG BY NIESE PID 107060

TYPE MONUMENT P.K./WASHER

~~ON SURFACE~~ - BELOW 1"

OFFSET  $\odot$  PAVEMENT 11.2' ~~LT~~ : RT

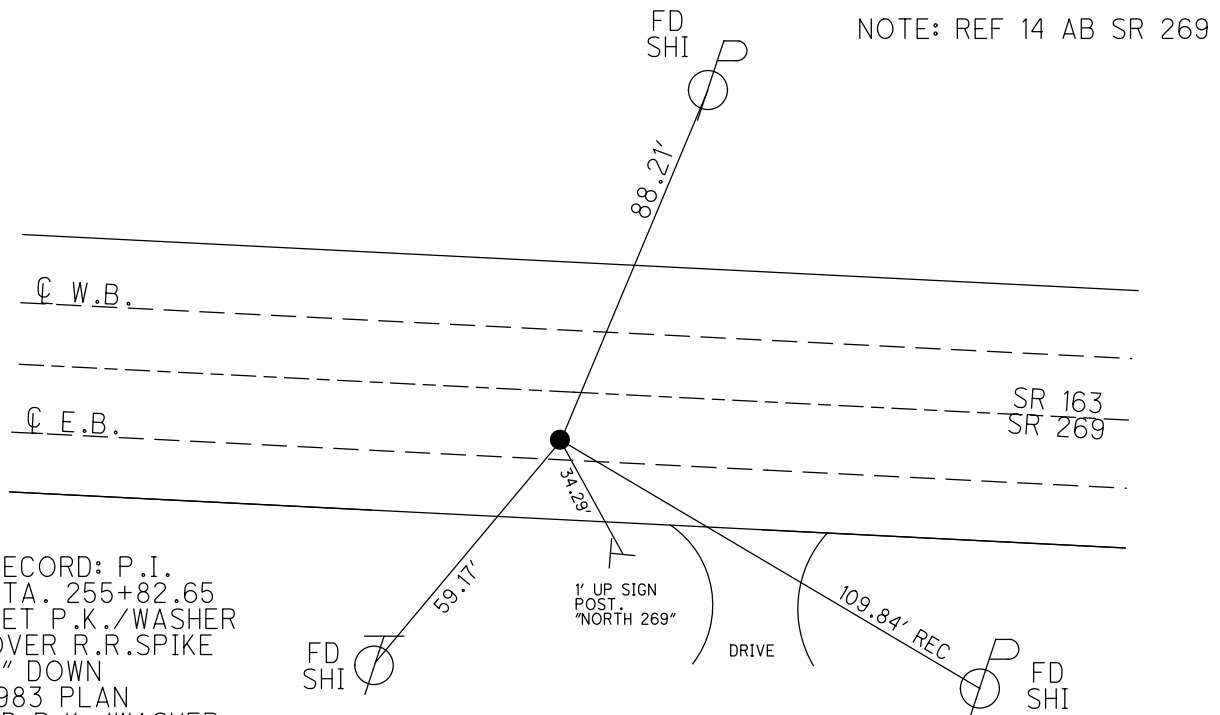
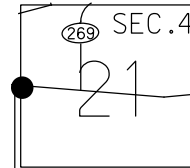
16.4' TO RT EDGE PAVEMENT

STATION: 1656+30.32

HORIZ.DATUM: \_\_\_\_\_ GEOID: \_\_\_\_\_

GRID: NORTHING: 679598.511 EASTING: 1878282.014

NOTE: THIS MAP IS FOR ODOT PURPOSES ONLY TO INDEX REFERENCE TIES, AND DOES NOT REPRESENT TRUE LAND SUBDIVISION.



RECORD: P.I.  
 STA. 255+82.65  
 SET P.K./WASHER  
 OVER R.R.SPIKE  
 2" DOWN  
 1983 PLAN  
 FD P.K./WASHER  
 9/28/09  
 SV102  
 4/23/10, KPM  
 SET MAG/WASHER  
 FINREFA132  
 9/17/12, SDC  
 FD MAG/WASHER  
 REFA132  
 1/16/13, MC  
 FD MAG/WASHER  
 REFAB14  
 9/26/18  
 2/8/19, JFO  
 9/13/19, JMR

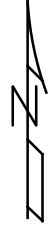
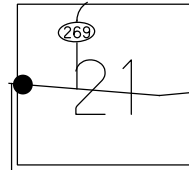
RICKARDS BAIT SHOP

O.D.O.T. DISTRICT 2 SURVEY OFFICE (USE ONLY)

PERSONNEL \_\_\_\_\_ REFERENCE NO. 132 A SHEET 7 OF 63  
 NOTES MOSE DATE 5/5/11 ROUTE SR 163  
 H.C. MOSE WEATHER SUNNY COUNTY OTTAWA  
 R.C. LUMBREZER TEMP. 60° TOWNSHIP DANBURY  
 \_\_\_\_\_ SECTION 4-21

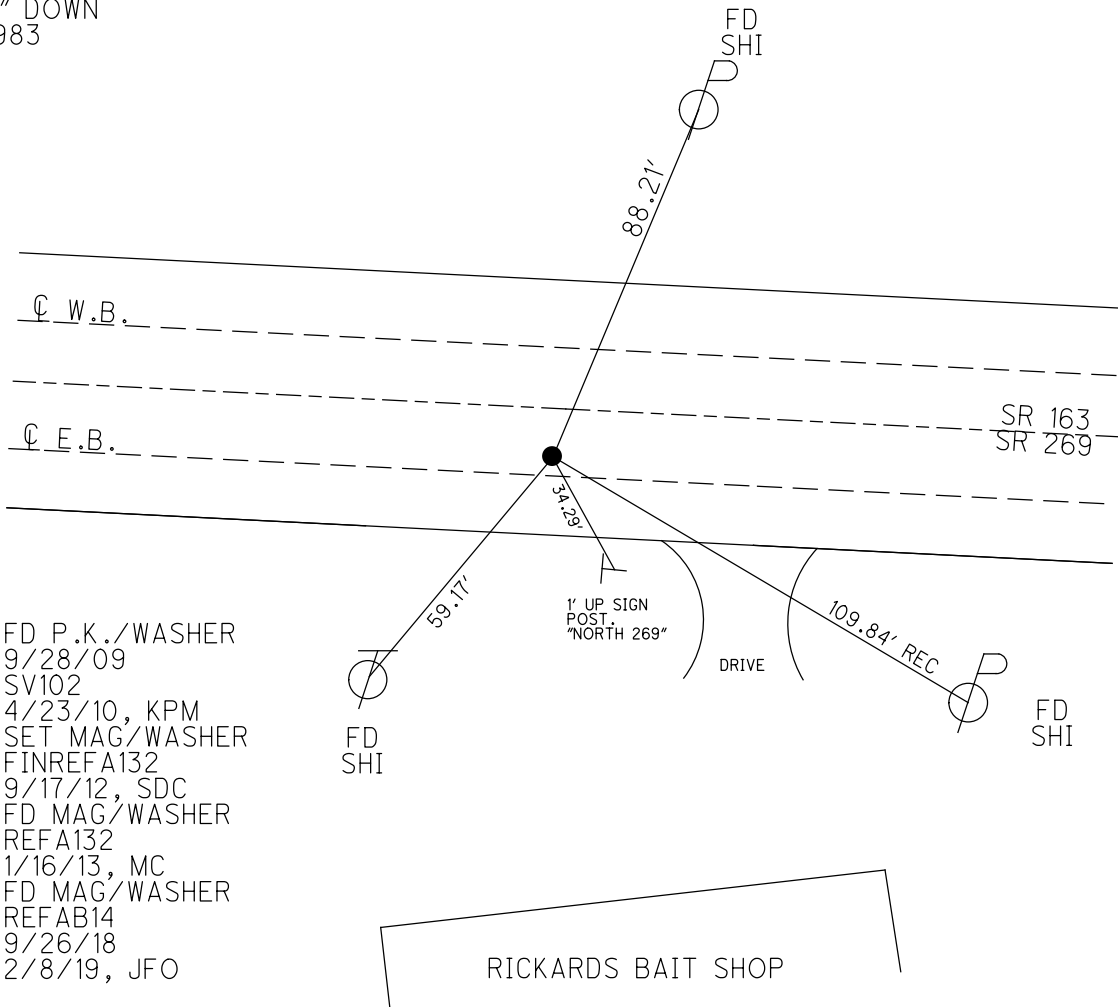
TYPE MONUMENT P.K./WASHER  
~~ON SURFACE~~ - BELOW 1 "  
~~LEFT~~ - Q PAV'T - RIGHT 11.2'  
16.4' TO RT EDGE PAVEMENT  
 S.L.M. 1656+30.32  
 GRID: NORTHING: 679598.511 EASTING: 1878282.014

NOTE: THIS MAP IS FOR ODOT PURPOSES ONLY TO INDEX REFERENCE TIES, AND DOES NOT REPRESENT TRUE LAND SUBDIVISION.



RECORD: P.I.  
 STA. 255+82.65  
 SET P.K./WASHER  
 OVER R.R.SPIKE  
 2" DOWN  
 1983

NOTE: REF 14 AB SR 269



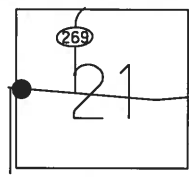
FD P.K./WASHER  
 9/28/09  
 SV102  
 4/23/10, KPM  
 SET MAG/WASHER  
 FINREFA132  
 9/17/12, SDC  
 FD MAG/WASHER  
 REFA132  
 1/16/13, MC  
 FD MAG/WASHER  
 REFAB14  
 9/26/18  
 2/8/19, JFO

O.D.O.T. DISTRICT 2 SURVEY OFFICE (USE ONLY)

PERSONNEL	REFERENCE NO.	132 A	SHEET	7	OF	63
NOTES	MOSER	DATE	5/5/11	ROUTE	SR 163	
H.C.	MOSER	WEATHER	SUNNY	COUNTY	OTTAWA	
R.C.	LUMBREZER	TEMP.	60°	TOWNSHIP	DANBURY	
				SECTION	4-21	

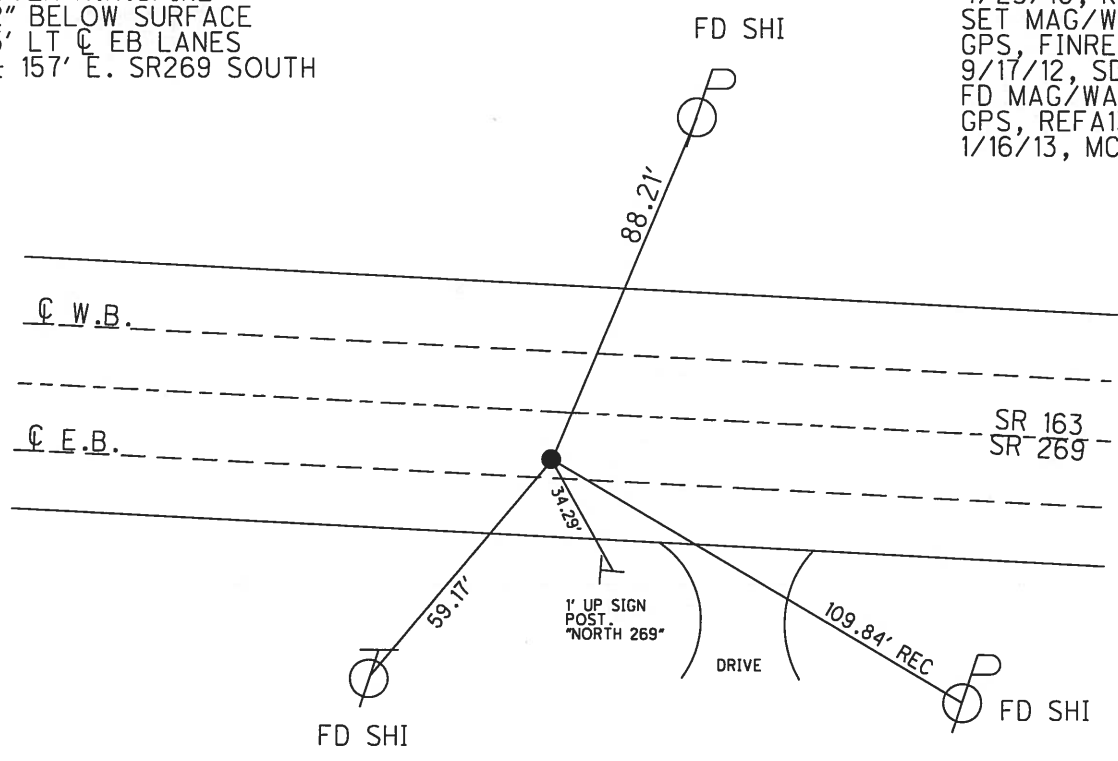
TYPE MONUMENT P.K./WASHER  
~~ON SURFACE~~ - BELOW 1"  
~~LEFT~~ - CL PAV'T - RIGHT 11.2'  
16.4' TO RT EDGE PAVEMENT  
 S.L.M. 1656+30.32  
 GRID: NORTHING: 679598.584    EASTING: 1878281.975

NOTE:  
THIS MAP IS FOR ODOT PURPOSES ONLY  
TO INDEX REFERENCE TIES, AND DOES NOT  
REPRESENT TRUE LAND SUBDIVISION.



1983 RECORD  
 P.I. 255+82.65  
 SET P.K./WASHER  
 OVER R.R.SPIKE  
 2" BELOW SURFACE  
 5' LT CL EB LANES  
 ± 157' E. SR269 SOUTH

FD P.K./WASHER  
 9/28/09  
 GPS, SV102  
 4/23/10, KPM  
 SET MAG/WASHER  
 GPS, FINREFA132  
 9/17/12, SDC  
 FD MAG/WASHER  
 GPS, REFA132  
 1/16/13, MC



O.D.O.T. DISTRICT 2 SURVEY OFFICE

PERSONNEL

REFERENCE NO. 132-A

SHEET 2 OF 4

NOTES NUHFER

DATE 8-2-06

ROUTE S.R. 163

H.C. CORDES

WEATHER SUNNY/HOT

COUNTY OTTAWA

R.C. VIETH

TEMP. +87°

TOWNSHIP DANBURY

HUSS

SECTION Conn. West. Reserve

MIKLOVIC

T N R E

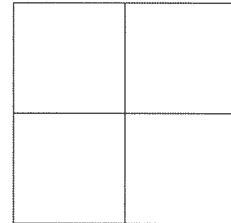
TYPE MONUMENT PK/WASHER

ON SURFACE - ~~BELOW~~ ON SURFACE

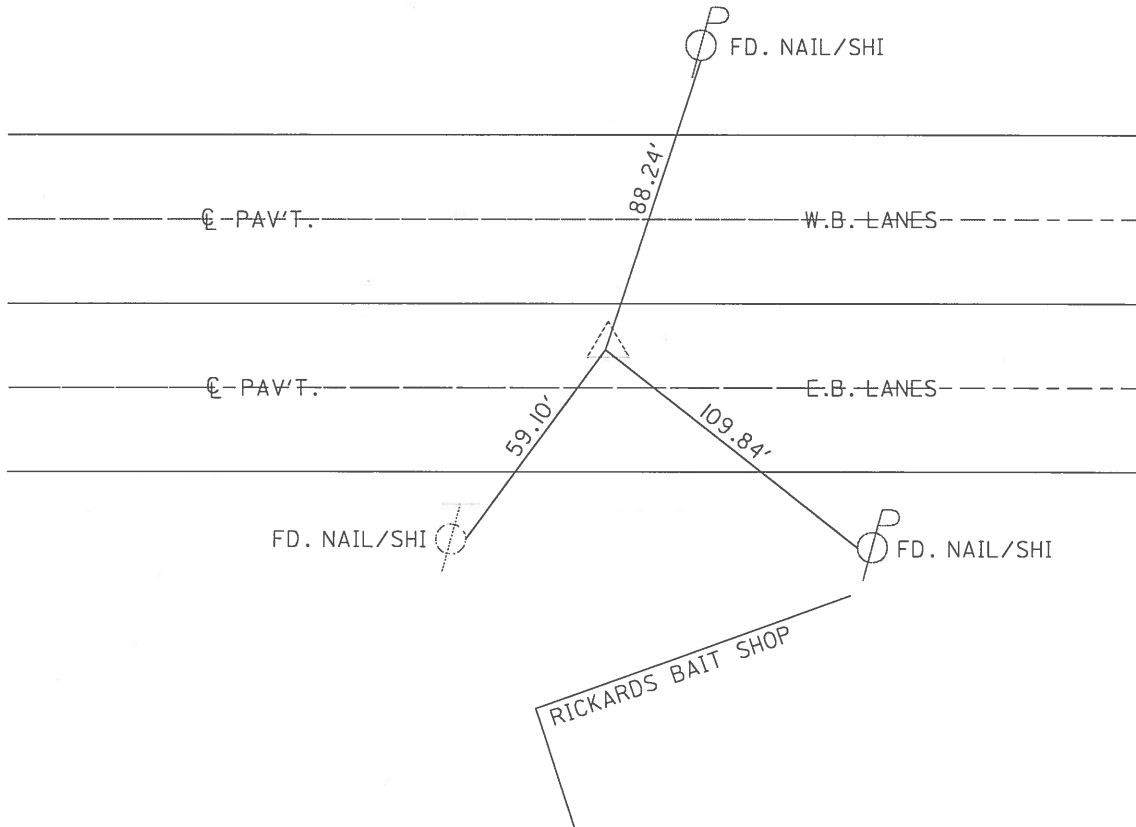
~~LEFT~~ - Q PAV'T - RIGHT |||

16.8' TO RT. EDGE PAVEMENT

S.L.M. 1659+10



1983 RECORD  
P.I.  
255+82.65  
FD. PK/WASHER  
OVER RR SPIKE 2"  
BELOW SURFACE  
5' LT Q OF EB LANES  
± 157' E SR269 SOUTH



# O.D.O.T. DISTRICT 2 SURVEY OFFICE

PERSONNEL

REFERENCE NO. 132-A

SHEET 3 OF 52

NOTES POUSOS BURY

H.C. LOEHRIKY

R.C. RODSOS

CANTERBURY

DATE 5/17/95

WEATHER CLOUDY

TEMP. 70°

ROUTE S.R. 163

COUNTY OTTAWA

TOWNSHIP DAWNBURY

SECTION CONN WEST. RESERVE

T \_\_\_\_\_ R \_\_\_\_\_

Set P.K./WASHER  
6-4-96

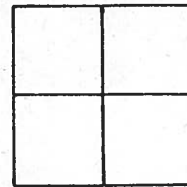
TYPE MONUMENT LARGE RR SPIKE

~~ON SURFACE~~ - BELOW 2"

~~LEFT - C PAV'T.~~ - RIGHT 11'

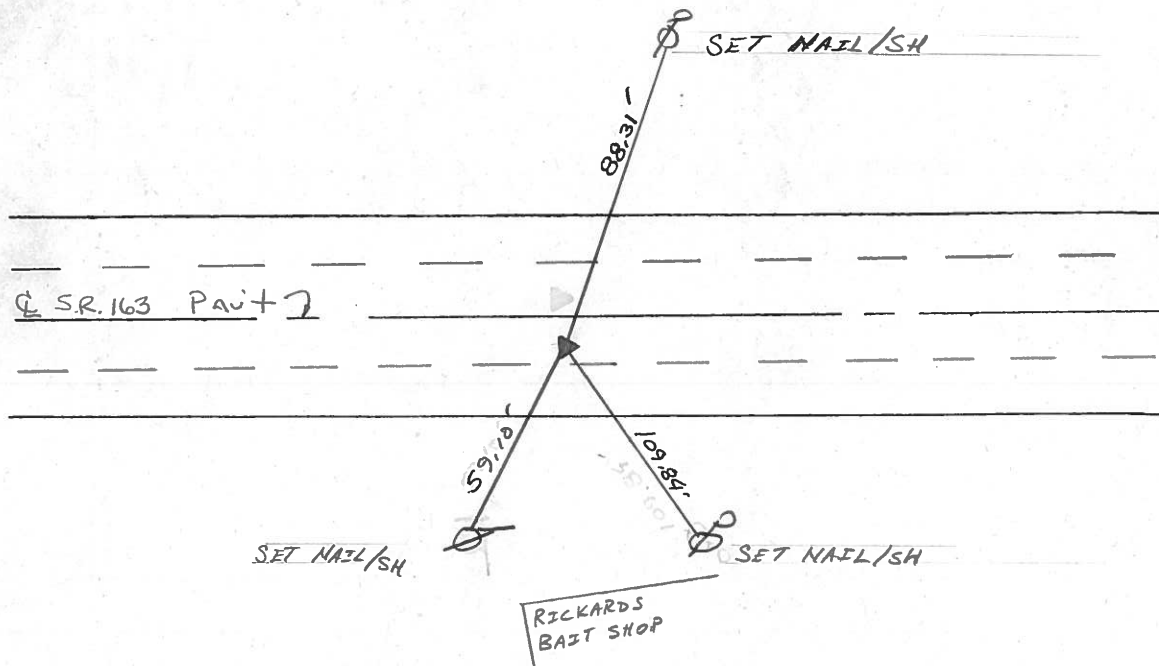
16.8 TO RT EDGE PAVEMENT

S.L.M. 1659410



1983 Record  
P.I.  
255 + 82.65  
Fd P.K. & WASHER  
at top RR SPIKE 2"  
Below SURFACE  
5' Lt CL OF  
E.B. LANES

± 157' E SR 269 SOUTH



Q.D.O.T. DISTRICT 2 SURVEY OFFICE

SHEET 2 OF \_\_\_\_\_

County Ottawa S.R. # 163

Date 11/21/83

Township Danbury

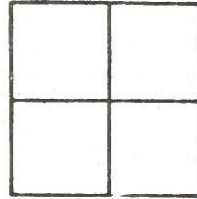
Weather sunny - windy

Section \_\_\_\_\_

Temp. 44°

T N, R E

Personnel Cronin



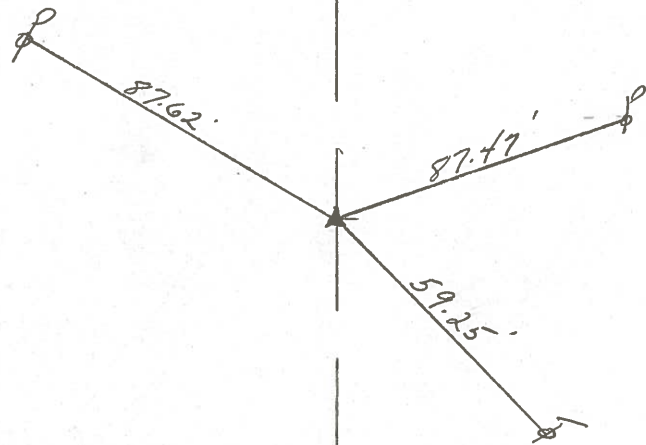
Ripple

Geyman

Barbour

#132-A

P.I.  
255+82.65  
Fd. P.K. & washer  
atop R.R. spike 2"  
below surface. 5' Lt.  
E. B. Lanes



S.R. # 163

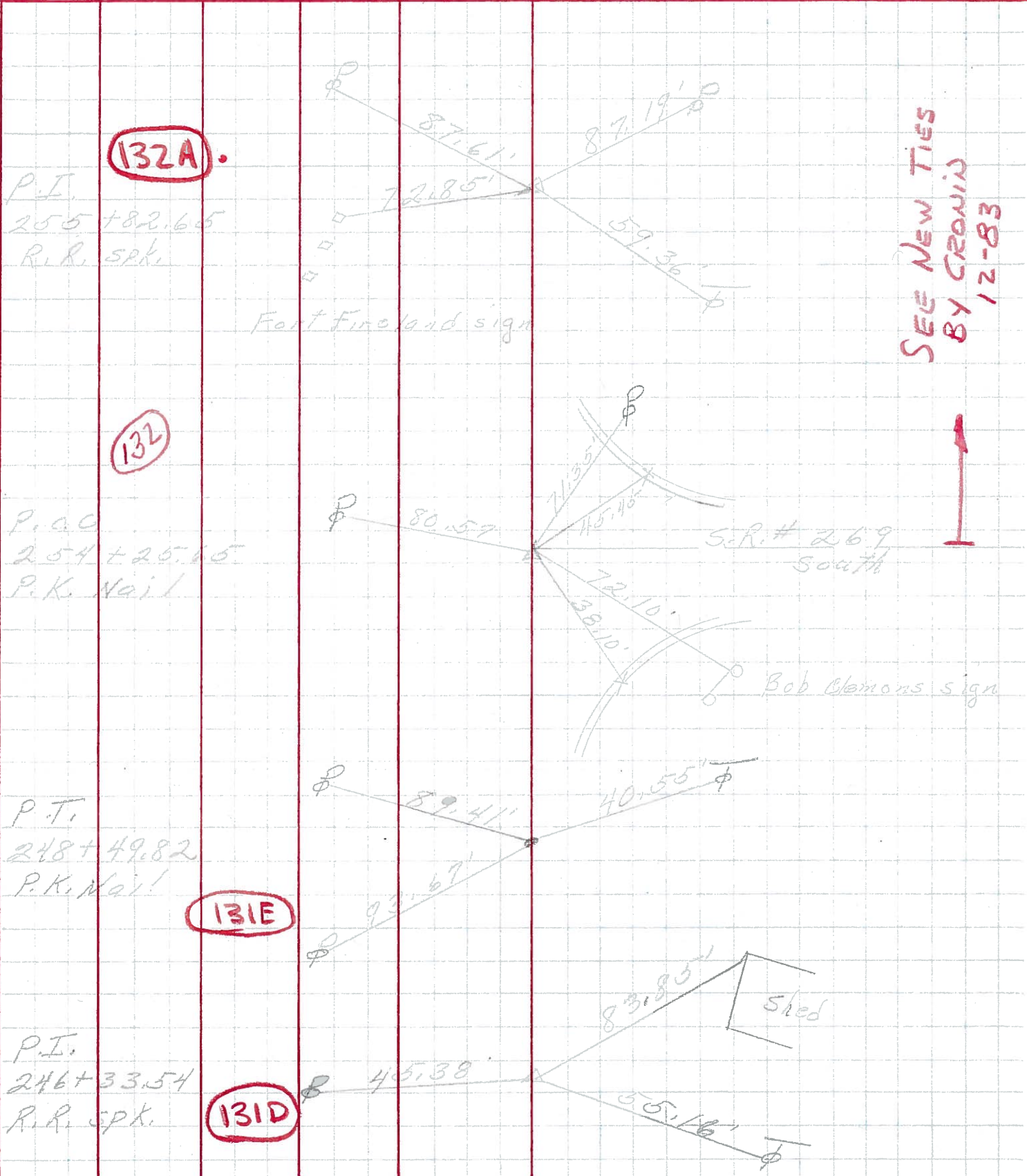
PERSONNEL TITLE PERSONNEL TITLE

COUNTY Ottawa DATE 6-12-69

S. R. 163 WEATHER \_\_\_\_\_

SEC. 4 TEMP. \_\_\_\_\_

DESCRIPTION Danbury Twp. JOB NO. \_\_\_\_\_



PERSONNEL	TITLE	PERSONNEL	TITLE	COUNTY	DATE	WEATHER	TEMP.
Schneider		Potts		Ottawa	9-5-68	Cloudy	80°
Mosser				S. R. 163			
Barbieri				SEC. Port Clinton - East			
Redding							

DESCRIPTION: Ties for Control Points

