

O.D.O.T. DISTRICT 2 SURVEY OFFICE (USE ONLY)

PERSONNEL _____

REFERENCE NO. 133

SHEET 9 OF 66

NOTES RHOADES

DATE 6/25/14

ROUTE SR 163

H.C. WESTFALL

WEATHER CLOUDY

COUNTY OTTAWA

R.C. THOMAS

TEMP. 72°

TOWNSHIP DANBURY

SECTION 4-21

DWG BY NIESE

PID 107060

TYPE MONUMENT MAG/WASHER

ON SURFACE - ~~BELOW~~ ON

OFFSET ☉ PAVEMENT 8.9' ~~LT~~ : RT

- TO - EDGE PAVEMENT

STATION: 1677+09.12

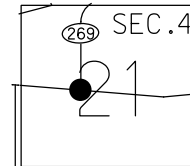
HORZ. DATUM: NAD83(2011)

GEOID: 2012A

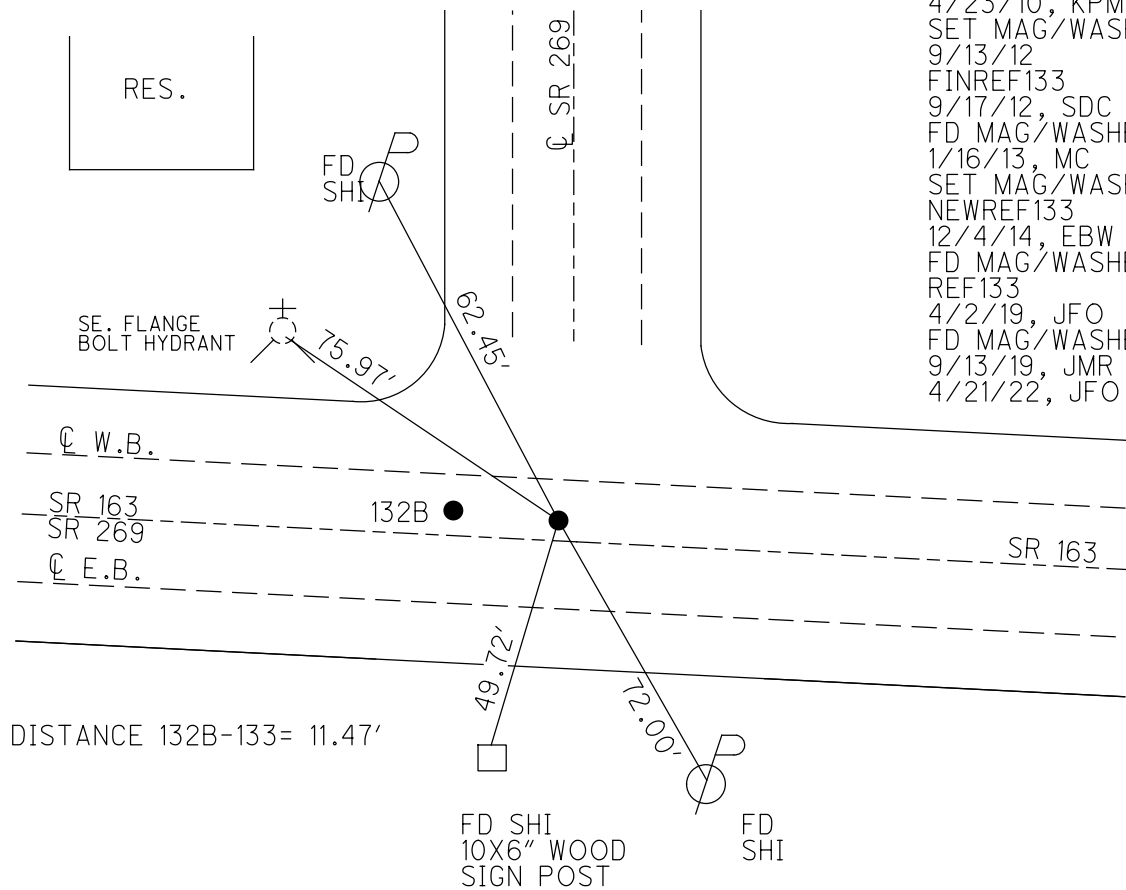
GRID: NORTHING: 679503.521

EASTING: 1880370.498

NOTE:
THIS MAP IS FOR ODOT PURPOSES ONLY
TO INDEX REFERENCE TIES, AND DOES NOT
REPRESENT TRUE LAND SUBDIVISION.



NOTE:
UNKNOWN ORIGIN
FD P.K./WASHER
8/2/06
9/28/09, 3/29/10
SV104
4/23/10, KPM
SET MAG/WASHER
9/13/12
FINREF133
9/17/12, SDC
FD MAG/WASHER
1/16/13, MC
SET MAG/WASHER
NEWREF133
12/4/14, EBW
FD MAG/WASHER
REF133
4/2/19, JFO
FD MAG/WASHER
9/13/19, JMR
4/21/22, JFO

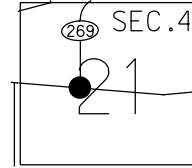


O.D.O.T. DISTRICT 2 SURVEY OFFICE (USE ONLY)

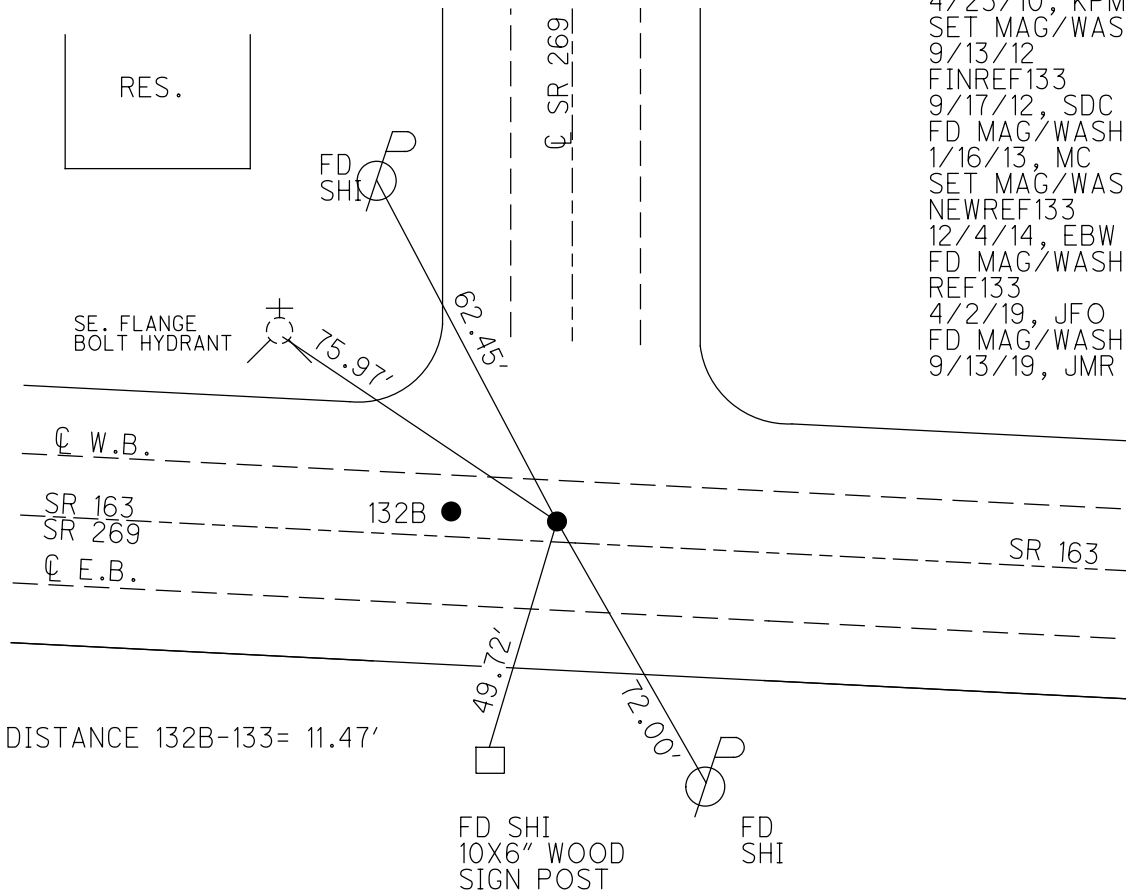
PERSONNEL _____ REFERENCE NO. 133 SHEET 9 OF 66
 NOTES RHOADES DATE 6/25/14 ROUTE SR 163
 H.C. WESTFALL WEATHER CLOUDY COUNTY OTTAWA
 R.C. THOMAS TEMP. 72° TOWNSHIP DANBURY
 SECTION 4-21
 DWG BY NIESE PID 107060

TYPE MONUMENT MAG/WASHER
 ON SURFACE - ~~BELOW~~ ON _____
 OFFSET C PAVEMENT 8.9' ~~±~~ : RT
 _____ TO _____ EDGE PAVEMENT
 STATION: 1677+09.12
 HORZ.DATUM: NAD83(2011) GEOID: 2012A
 GRID: NORTHING: 679503.521 EASTING: 1880370.498

NOTE:
 THIS MAP IS FOR ODOT PURPOSES ONLY.
 TO INDEX REFERENCE TIES, AND DOES NOT
 REPRESENT TRUE LAND SUBDIVISION.



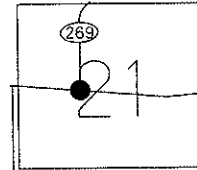
NOTE:
 UNKNOWN ORIGIN
 FD P.K./WASHER
 8/2/06
 9/28/09, 3/29/10
 SV104
 4/23/10, KPM
 SET MAG/WASHER
 9/13/12
 FINREF133
 9/17/12, SDC
 FD MAG/WASHER
 1/16/13, MC
 SET MAG/WASHER
 NEWREF133
 12/4/14, EBW
 FD MAG/WASHER
 REF133
 4/2/19, JFO
 FD MAG/WASHER
 9/13/19, JMR



O.D.O.T. DISTRICT 2 SURVEY OFFICE (USE ONLY)

PERSONNEL	REFERENCE NO. <u>133</u>	SHEET <u>9</u> OF <u>63</u>
NOTES <u>MOSER</u>	DATE <u>5/5/11</u>	ROUTE <u>SR 163</u>
H.C. <u>MOSER</u>	WEATHER <u>SUNNY</u>	COUNTY <u>OTTAWA</u>
R.C. <u>LUMBREZER</u>	TEMP. <u>60°</u>	TOWNSHIP <u>DANBURY</u>
		SECTION <u>4-21</u>

TYPE MONUMENT P.K. NAIL
 ON SURFACE - ~~BELOW~~ ON
~~LEFT~~ - ☉ PAV'T - RIGHT 8.9'
35.8' TO RT EDGE PAVEMENT
 S.L.M. 1677+09.12
 Grid: Northing: 679503.547 Easting: 1880370.497



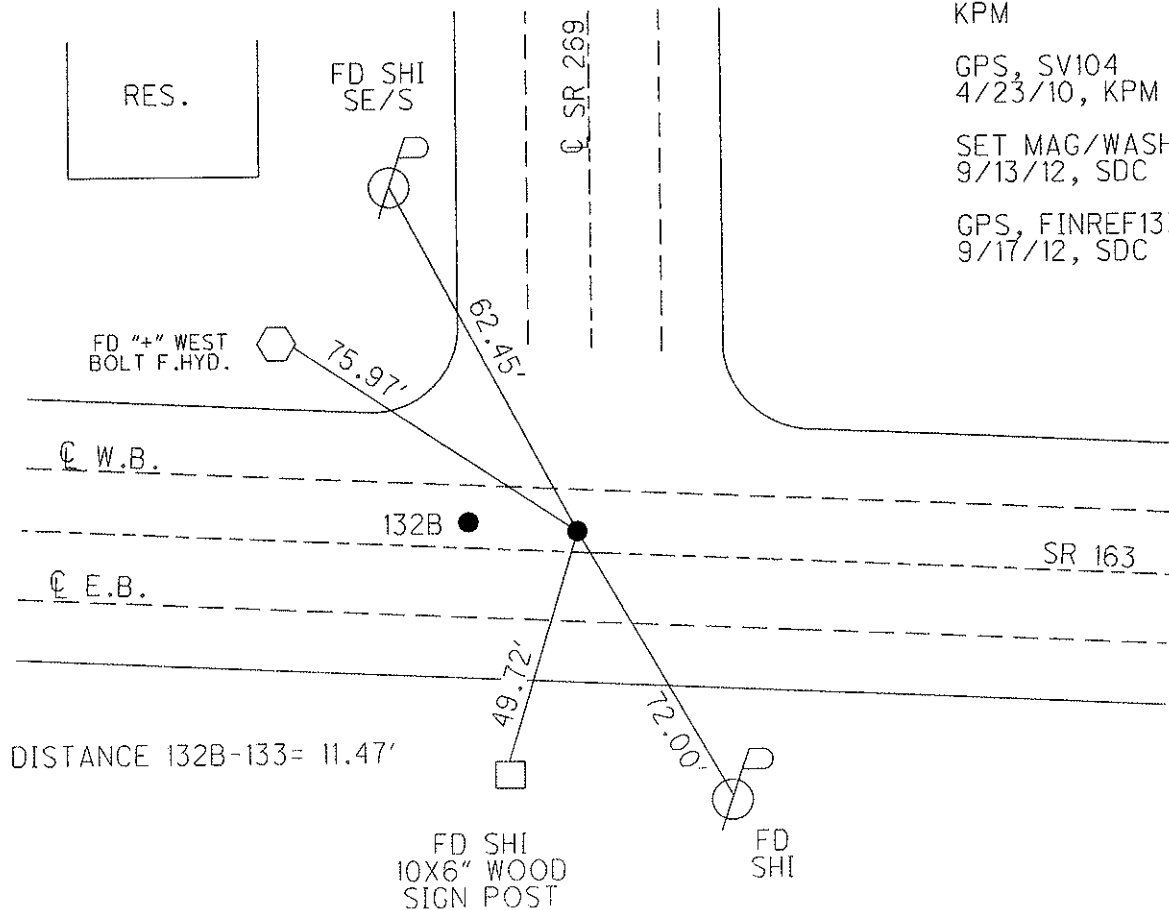
NOTE: 8/2/06
 SET BY OTHERS
 UNKNOWN ORIGIN

FD P.K./WASHER
 9/28/09, 3/29/10
 KPM

GPS, SV104
 4/23/10, KPM

SET MAG/WASHER
 9/13/12, SDC

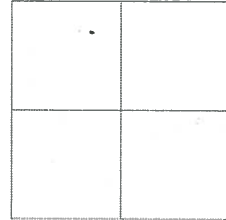
GPS, FINREF133
 9/17/12, SDC



O.D.O.T. DISTRICT 2 SURVEY OFFICE

PERSONNEL _____ REFERENCE NO. 133 SHEET 3 OF 4
 NOTES HUSS DATE 8-2-06 ROUTE SR 163
 H.C. CORDES WEATHER SUNNY-HOT COUNTY OTTAWA
 R.C. VIETH TEMP. +87° TOWNSHIP DANBURY
 HOMAN SECTION Conn. West. Reserve
 MIKLOVIC T N R E

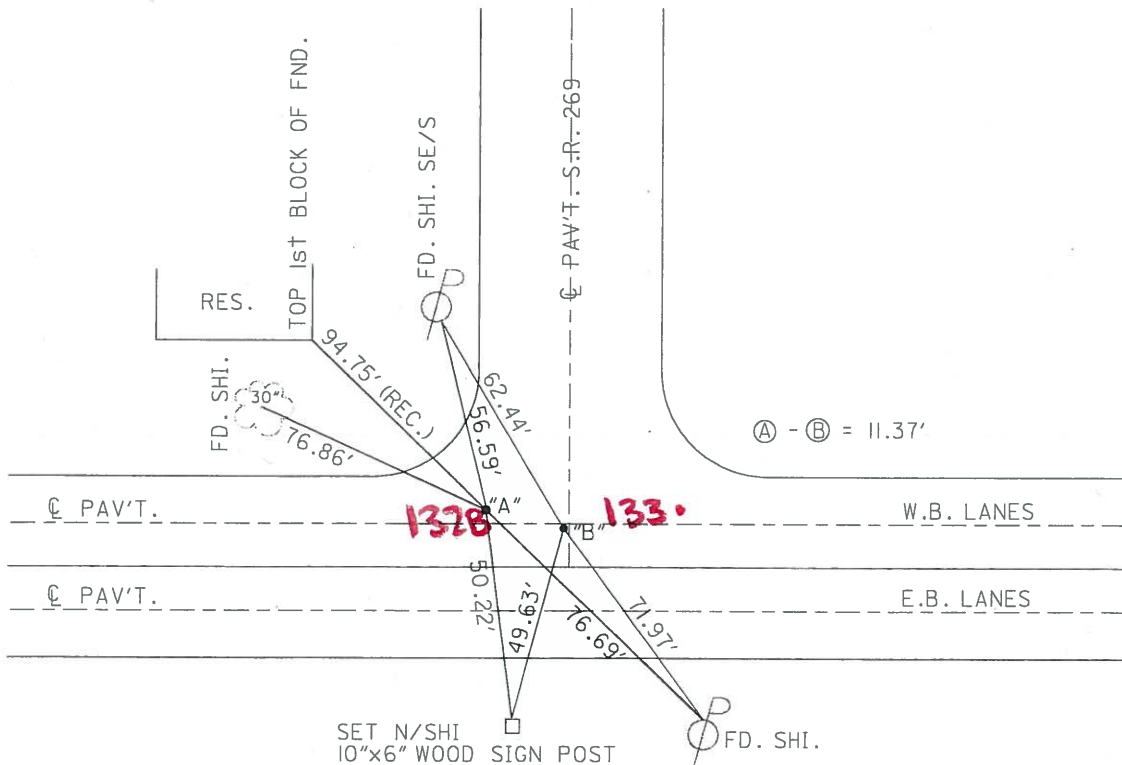
TYPE MONUMENT Ⓐ-PK/WASHER Ⓑ-PK
 ON SURFACE - ~~BELOW~~ _____ YES
 LEFT - ☉ PAV'T - RIGHT 8.3' LT. ☉
36' TO RT. EDGE PAVEMENT
 S.L.M. _____ 1679 + 95



1983 RECORD
 P.O.T. 276+66.45
 SET PK & WASHER ATOP
 PK & WASHER NEAR
 ☉ W.B. LANES

NOTE: PT. "B" SET BY
 OTHERS - UNKNOWN ORIGIN

PT "A" ODOT REF. PT.



ODOT. DISTRICT 2 SURVEY OFFICE

SHEET 3 OF

County Ottawa S.R. # 163

Date 11/21/83

Township Danbury

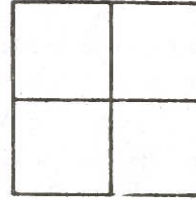
Weather sunny - windy

Section _____

Temp. 44°

T-N, R-E

Personnel Cronin



Lipple

Geyman

Barbour

#133

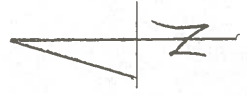
P.O.T.
276 + 61.45
set P.K. washer atop
P.K. washer & W.B. Lines

& S.R. # 269 North

58.29'

76.88'

76.83'



& S.R. #163 A

PERSONNEL TITLE PERSONNEL TITLE

Oranin
Ripple
Geyman

COUNTY Ottawa

DATE 8/15/83

S. R. # 163

WEATHER sunny

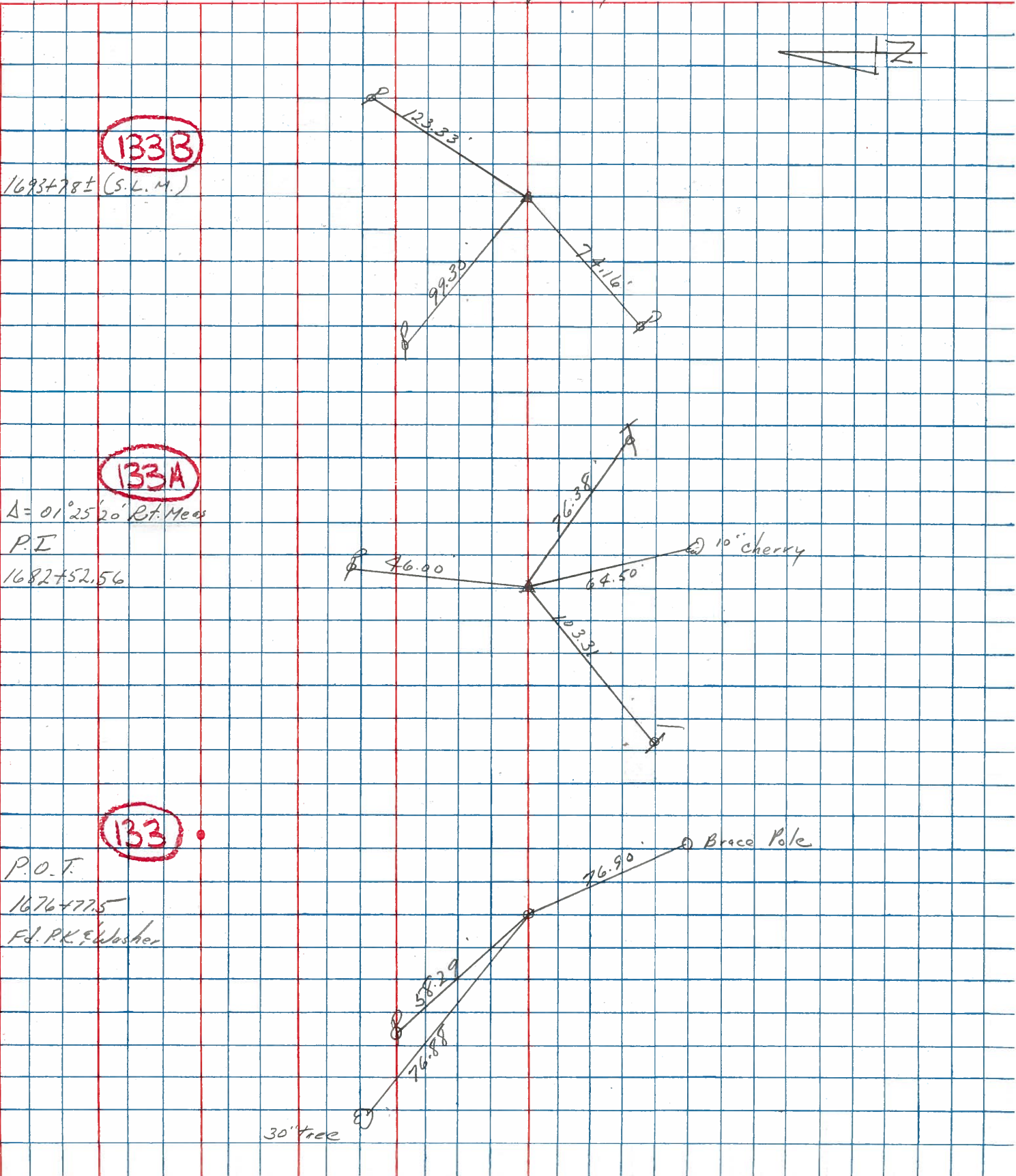
SEC. 3176

TEMP. 85°

DESCRIPTION Control Point Trees

JOB NO.

LEFT CENTER LINE Survey RIGHT



133B

1693+78± (S.L.M.)

133A

$\Delta = 01^{\circ}25'20''$ Bt. Meas

P.I

1682+52.56

133

P.O.T.

1676+77.5

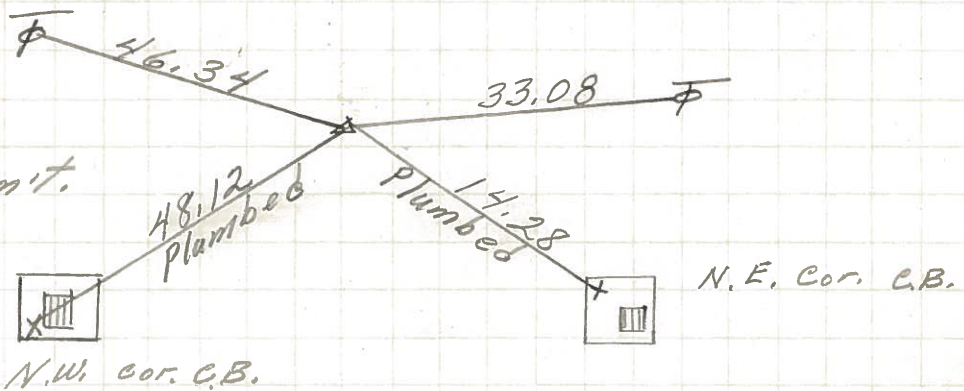
Fd. P.K. E. Washer

PERSONNEL TITLE PERSONNEL TITLE
Schneider _____
Mosser _____
Barbour _____
Geyman _____

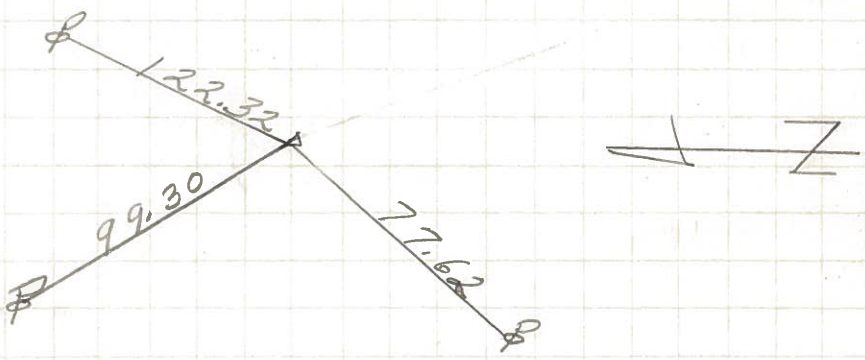
COUNTY Ottawa DATE 6-9-71
 S. R. 163 WEATHER _____
 SEC. 4 TEMP. _____

DESCRIPTION S.R. # 269 East JOB NO. _____
 LEFT CENTER LINE RIGHT

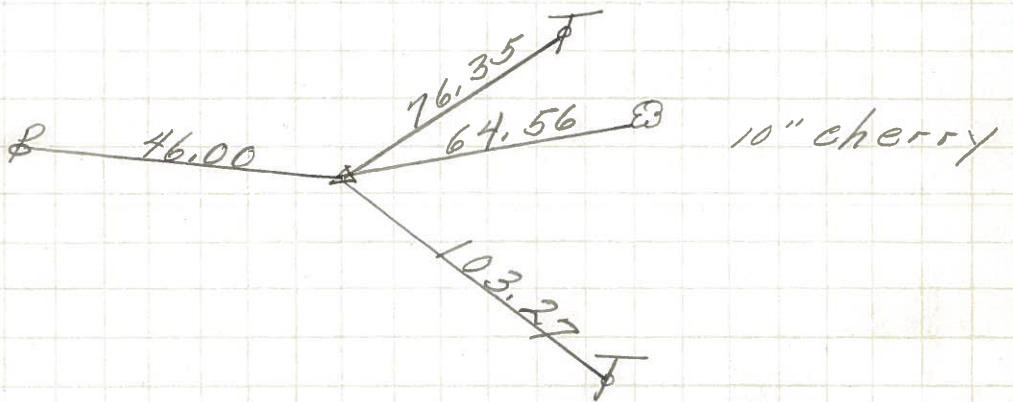
P.I. **133C**
 306+27.45
 3.5' off edge Parmit.
 Iron Pin 3" down



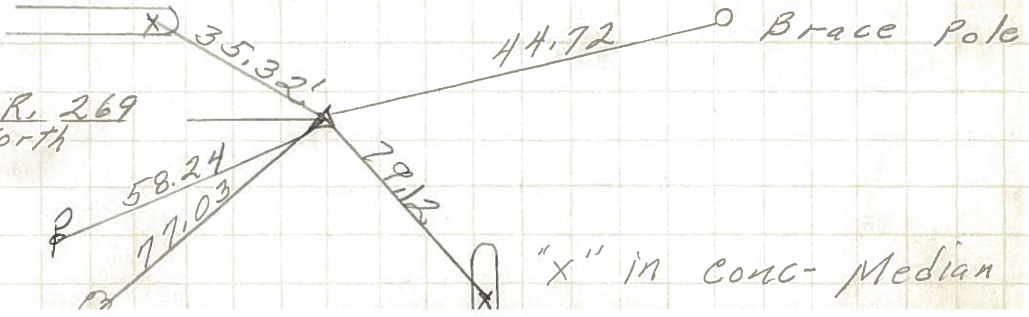
P.I. **133B**
 294+02.70
 3" down
 small spk.



P.I. **133A**
 282+81.5
 small R.R. spk.



P.O.T. **133**
 276+61.45 S.R. 269 North



PERSONNEL	TITLE	PERSONNEL	TITLE	COUNTY	<u>Ottawa</u>	DATE	<u>9-5-68</u>
<u>Schneider</u>		<u>Potts</u>		S. R.	<u>163</u>	WEATHER	<u>Cloudy</u>
<u>Mosser</u>				SEC.	<u>Port Clinton - East</u>	TEMP.	<u>80°</u>
<u>Redding</u>				DESCRIPTION	<u>Ties for Control Points</u>		JOB NO.

