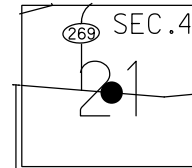


O.D.O.T. DISTRICT 2 SURVEY OFFICE (USE ONLY)

PERSONNEL _____ REFERENCE NO. 133 A SHEET 10 OF 66
 NOTES MOSER DATE 5/5/11 ROUTE SR 163
 H.C. MOSER WEATHER SUNNY COUNTY OTTAWA
 R.C. LUMBREZER TEMP. 60° TOWNSHIP DANBURY
 DWG BY NIESE PID 107060 SECTION 4-21

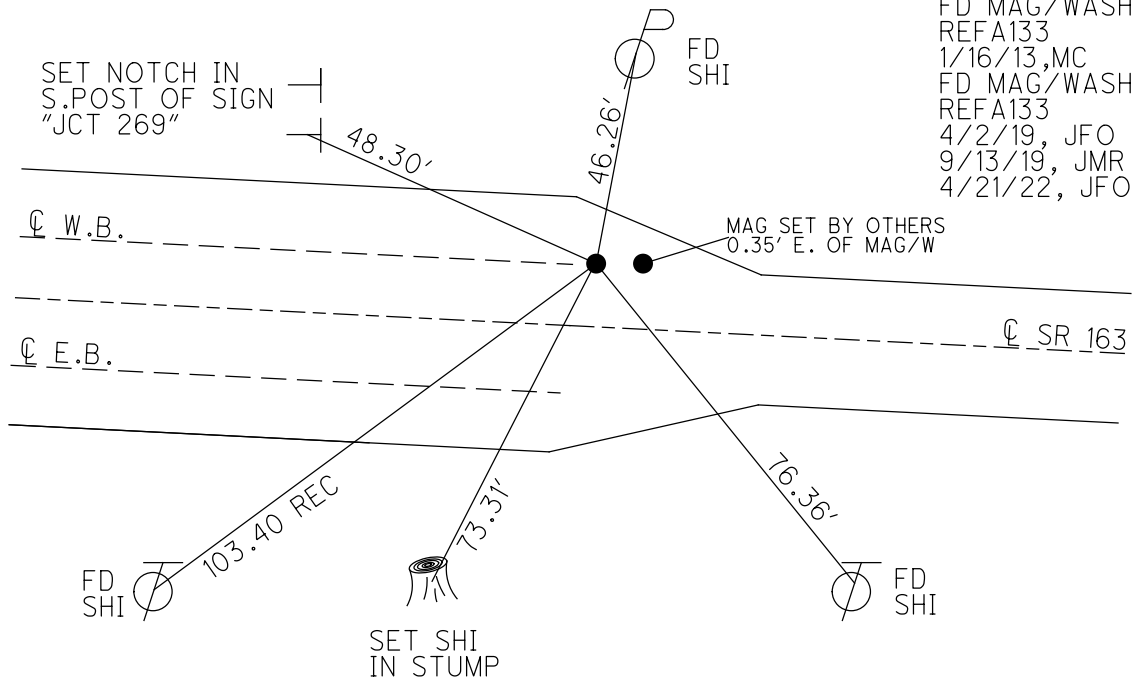
TYPE MONUMENT P.K./WASHER
 ON SURFACE - ~~BELOW~~ ON
 OFFSET CL PAVEMENT 6.5' LT : ~~RT~~
13.1' TO LT EDGE PAVEMENT
 STATION: 1683+29.17

NOTE:
 THIS MAP IS FOR ODOT PURPOSES ONLY.
 TO INDEX REFERENCE TIES, AND DOES NOT
 REPRESENT TRUE LAND SUBDIVISION.



HORZ. DATUM: NAD83(2011) GEOID: 2012A
 GRID: NORTHING: 679477.907 EASTING: 1880933.619

1 RECORD: P.I.
 $\Delta = 01^\circ 25' RT$
 STA. 282+81.50
 1983 PLAN
 FD P.K./WASHER
 9/28/09, 4/8/10
 SV105
 4/23/10, KPM
 SET MAG/WASHER
 9/13/12
 FINREFA133
 9/17/12, SDC
 FD MAG/WASHER
 REFA133
 1/16/13, MC
 FD MAG/WASHER
 REFA133
 4/2/19, JFO
 9/13/19, JMR
 4/21/22, JFO



O.D.O.T. DISTRICT 2 SURVEY OFFICE (USE ONLY)

PERSONNEL _____ REFERENCE NO. 133 A SHEET 10 OF 66
 NOTES MOSER DATE 5/5/11 ROUTE SR 163
 H.C. MOSER WEATHER SUNNY COUNTY OTTAWA
 R.C. LUMBREZER TEMP. 60° TOWNSHIP DANBURY
 SECTION 4-21
 DWG BY NIESE PID 107060

TYPE MONUMENT P.K./WASHER

ON SURFACE - ~~BELOW~~ ON _____

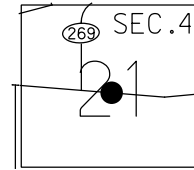
OFFSET C PAVEMENT 6.5' LT : ~~RT~~
13.1' TO LT EDGE PAVEMENT

STATION: 1683+29.17

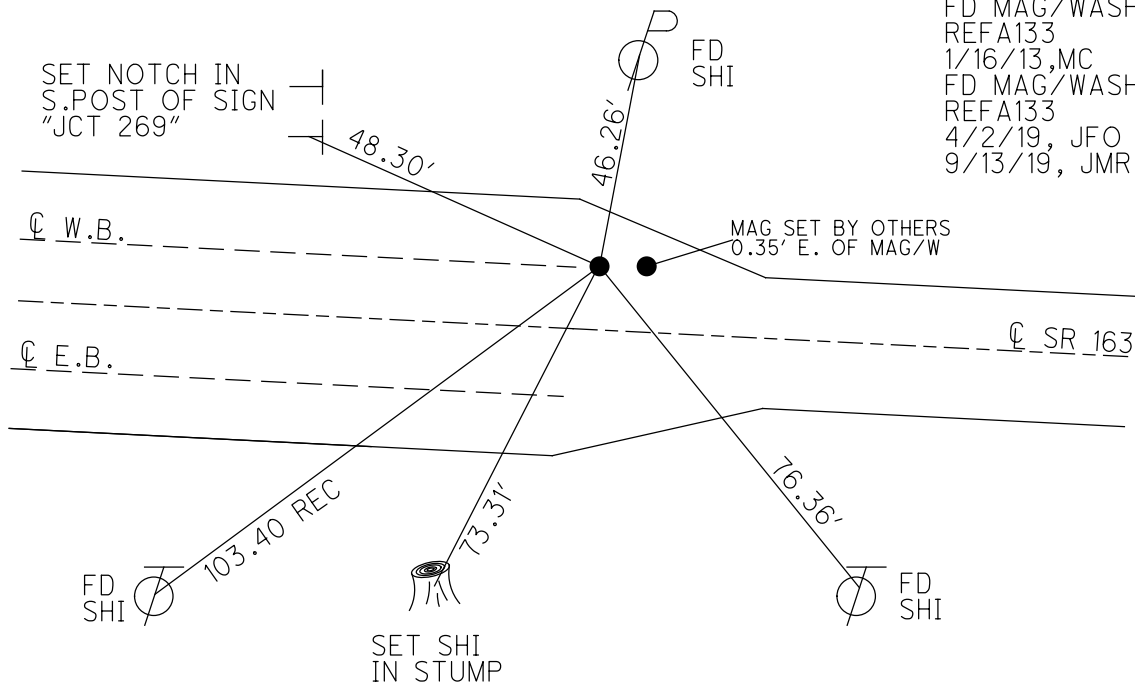
HORZ.DATUM: NAD83(2011) GEOID: 2012A

GRID: NORTHING: 679477.907 EASTING: 1880933.619

NOTE:
THIS MAP IS FOR ODOT PURPOSES ONLY
TO INDEX REFERENCE TIES, AND DOES NOT
REPRESENT TRUE LAND SUBDIVISION.



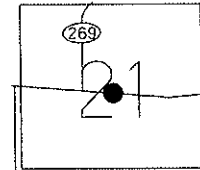
1 RECORD: P.I.
 $\Delta = 01^\circ 25' \text{ RT}$
 STA. 282+81.50
 1983 PLAN
 FD P.K./WASHER
 9/28/09, 4/8/10
 SV105
 4/23/10, KPM
 SET MAG/WASHER
 9/13/12
 FINREFA133
 9/17/12, SDC
 FD MAG/WASHER
 REFA133
 1/16/13, MC
 FD MAG/WASHER
 REFA133
 4/2/19, JFO
 9/13/19, JMR



O.D.O.T. DISTRICT 2 SURVEY OFFICE (USE ONLY)

PERSONNEL	REFERENCE NO. <u>133 A</u>	SHEET <u>10</u> OF <u>63</u>
NOTES <u>MOSE</u>	DATE <u>5/5/11</u>	ROUTE <u>SR 163</u>
H.C. <u>MOSE</u>	WEATHER <u>SUNNY</u>	COUNTY <u>OTTAWA</u>
R.C. <u>LUMBREZER</u>	TEMP. <u>60°</u>	TOWNSHIP <u>DANBURY</u>
		SECTION <u>4-21</u>

TYPE MONUMENT P.K./WASHER
 ON SURFACE - ~~BELOW~~ ON
 LEFT - CL PAV'T - ~~RIGHT~~ 6.5'
13.1' TO LT EDGE PAVEMENT
 S.L.M. 1683+29.17
 Grid: Northing: 679477.870 Easting: 1880933.620



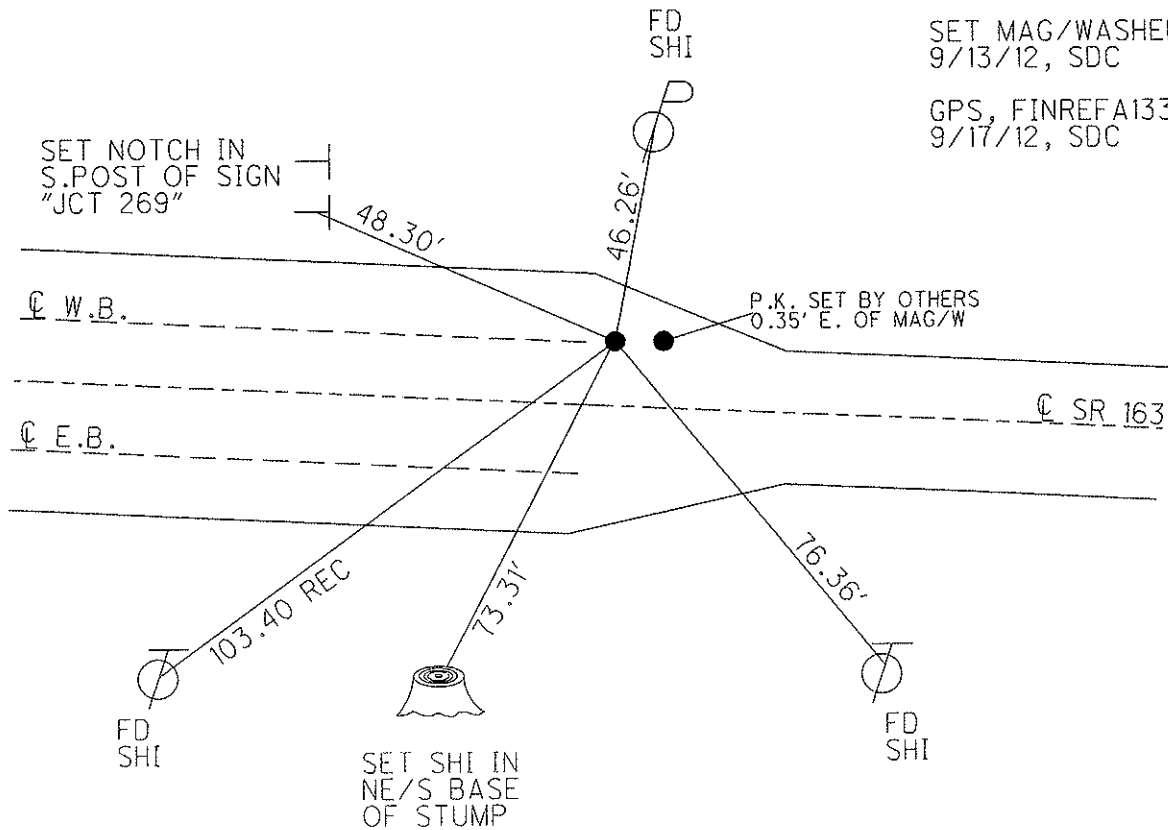
1983 RECORD
 P.I. $\Delta = 01^\circ 25'$ RT. (PLAN)
 282+81.50

FD P.K./WASHER
 9/28/09, 4/8/10
 KPM

GPS, SV105
 4/23/10, KPM

SET MAG/WASHER
 9/13/12, SDC

GPS, FINREFA133
 9/17/12, SDC



O.D.O.T. DISTRICT 2 SURVEY OFFICE

PERSONNEL

REFERENCE NO. 133-A

SHEET 4 OF 4

NOTES HUSS

DATE 8-2-06

ROUTE S.R. 163

H.C. CORDES

WEATHER SUNNY/HOT

COUNTY OTTAWA

R.C. VIETH

TEMP. +87°

TOWNSHIP DANBURY

HOMAN

SECTION Conn. West. Reserve

MIKLOVIC

T N R E

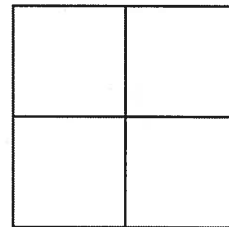
TYPE MONUMENT PK / WASHER

ON SURFACE - ~~BELOW~~ SURFACE

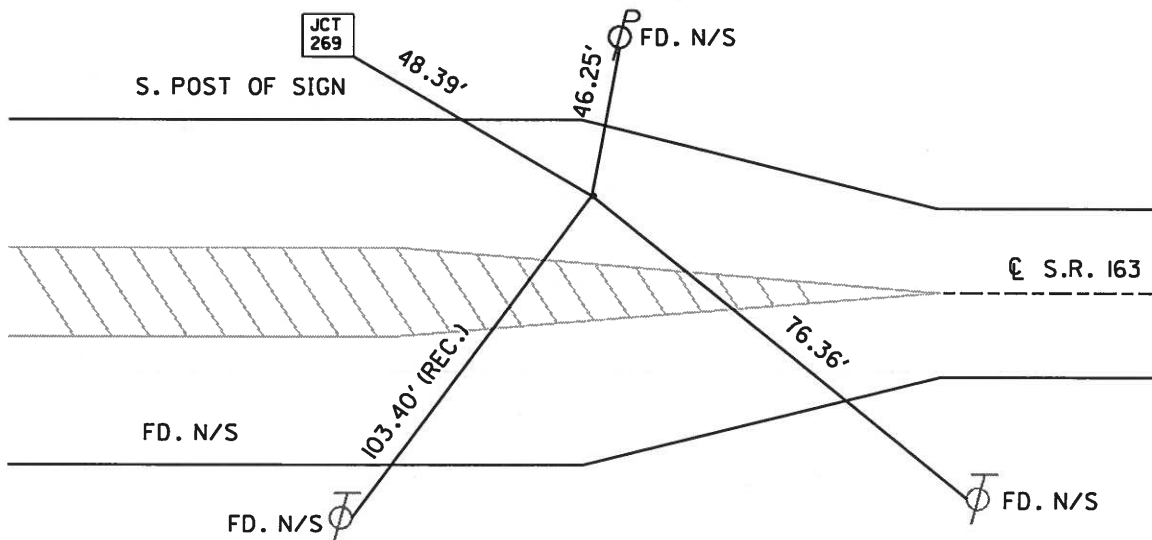
LEFT - PAV'T - ~~RIGHT~~ 6.5' LT.

 TO EDGE PAVEMENT

S.L.M. 1685+72



1983 RECORD
P.I. Δ=01°25' RT. (PLAN)
282+81.50



O.D.O.T. DISTRICT 2 SURVEY OFFICE

PERSONNEL

REFERENCE NO. 133-A

SHEET 5 OF 52

NOTES Rousas

H.C. LOHRKE

DATE 5/17/95

ROUTE SR 163

R.C. Rousas

WEATHER CLOUDY

COUNTY OTTAWIA

CANTERBURY

TEMP. 70°

TOWNSHIP DANBURY

SECTION _____

T _____ R _____

Reset

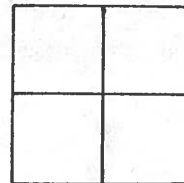
TYPE MONUMENT PK W/WASHER 6-4-96

ON SURFACE ~~BELOW~~ SURFACE

LEFT ~~TO~~ PAV'T. - RIGHT 6.9' LEFT

13' TO LEFT EDGE PAVEMENT

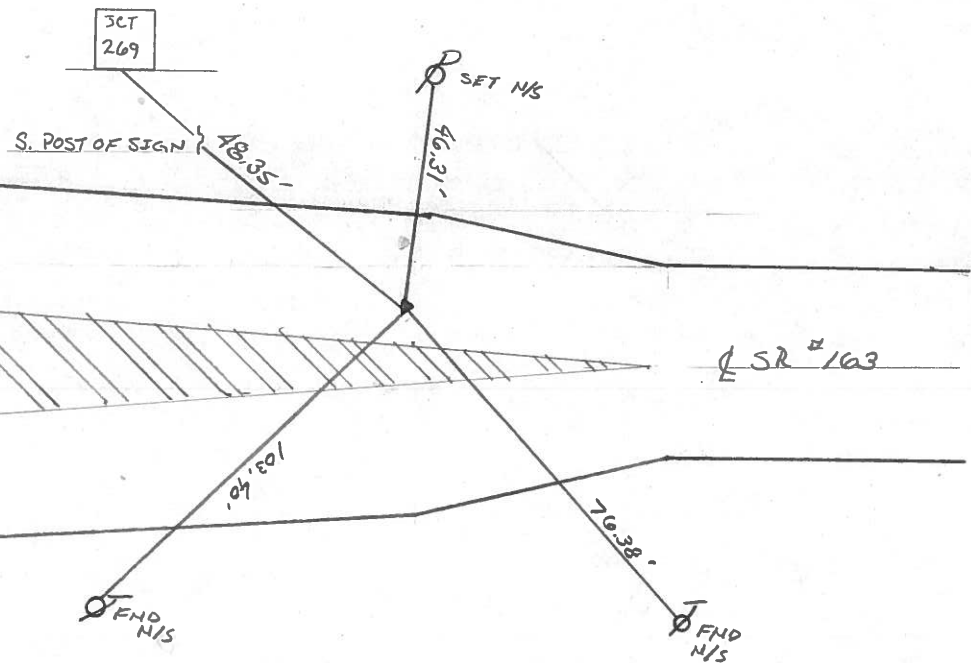
S.L.M. 1685+72



1983 RECORD

PT Δ = 01°25' RT (PLAN)

282+81.50



Q.D.O.T. DISTRICT 2 SURVEY OFFICE

SHEET 4 OF

County Ottawa S.R. #163

Date 11/21/83

Township Danbury

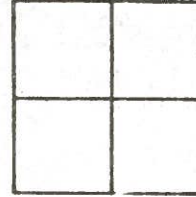
Weather sunny - windy

Section _____

Temp. 48°

T-N, R-E

Personnel Cronin



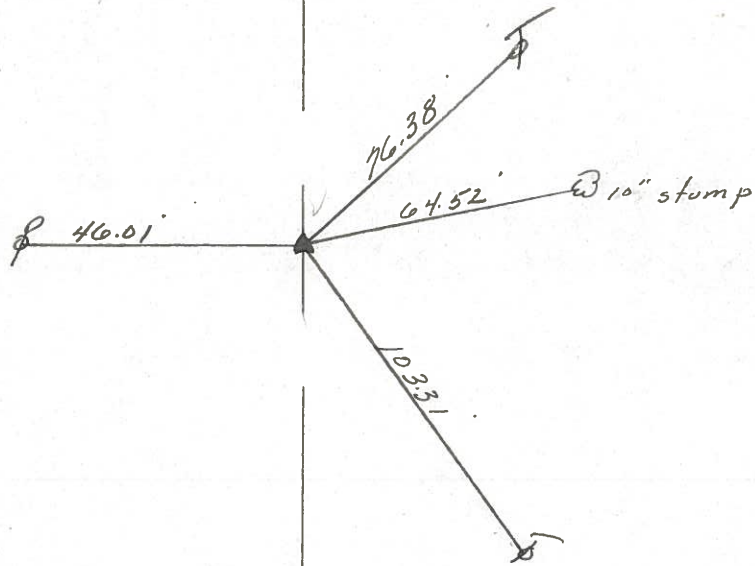
Ripple

Geyman

Barbour

#133-A

Plan
P.I. $\Delta = 01^{\circ}25'$ Rt.
282 + 81.50
Set P.K. & washer atop
mine spike. 13' Rt. E.P.



S.R. #163

PERSONNEL TITLE PERSONNEL TITLE

COUNTY Ottawa

DATE 8/15/83

Cronin

Ripple

Geyman

S. R. #163

WEATHER sunny

SEC. 3176

TEMP. 85°

DESCRIPTION Control Point Ties

JOB NO.

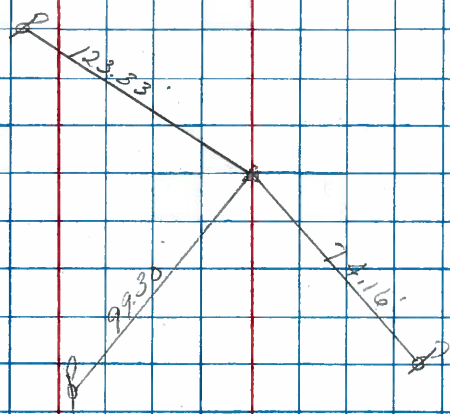
LEFT

CENTER LINE

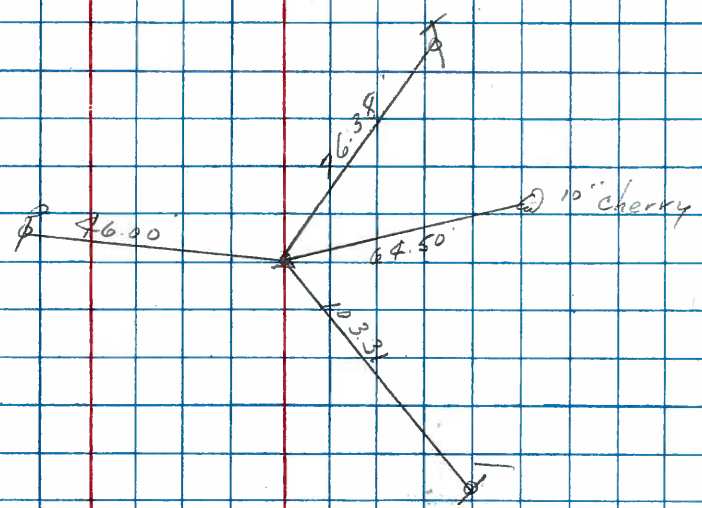
Survey

RIGHT

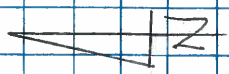
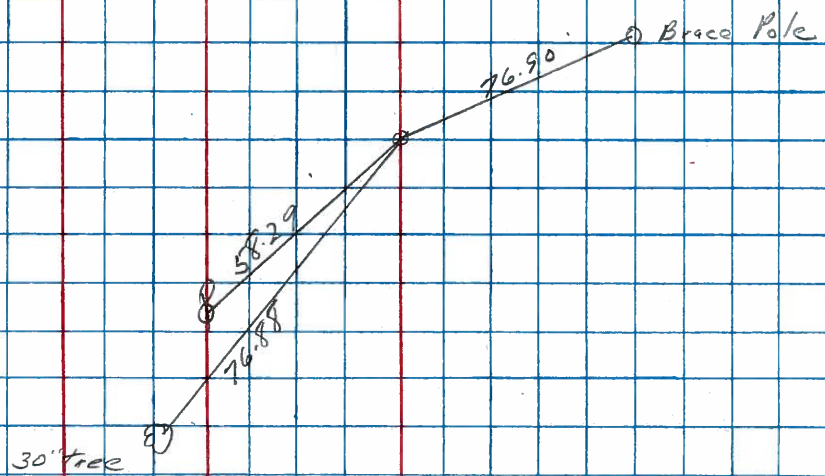
133B
1693+78± (S.L.M.)



133A
Δ = 01°25'20" Rt. Meas
P.I
1682+52.56



133
P.O.T.
1676+77.5
Fd. PK. Washer

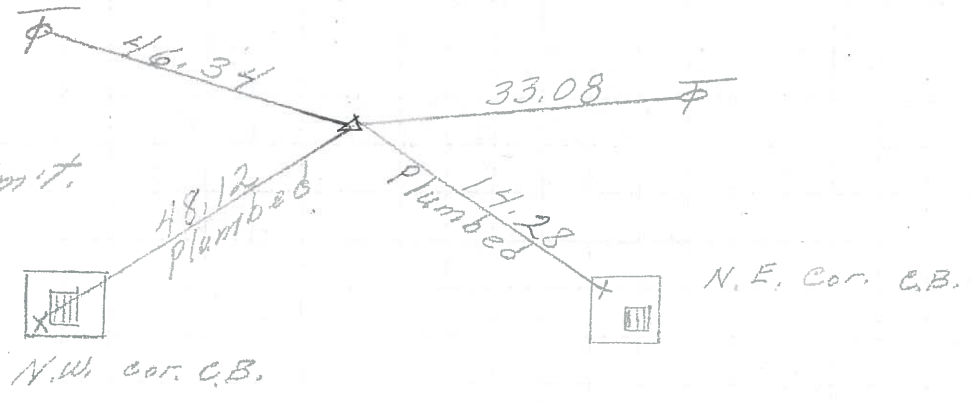


PERSONNEL	TITLE	PERSONNEL	TITLE	COUNTY	DATE
Schneider				Ottawa	6-9-71
Mosser				S. R. 163	WEATHER
Barbour				SEC. 4	TEMP.
Geyman					

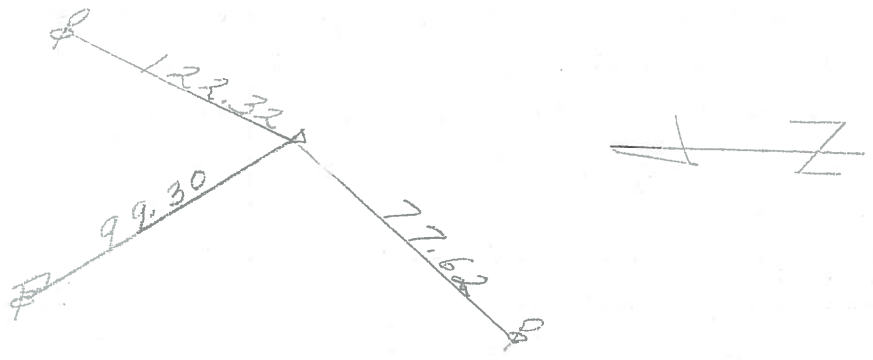
DESCRIPTION S.R. # 269 East

LEFT CENTER LINE RIGHT JOB NO.

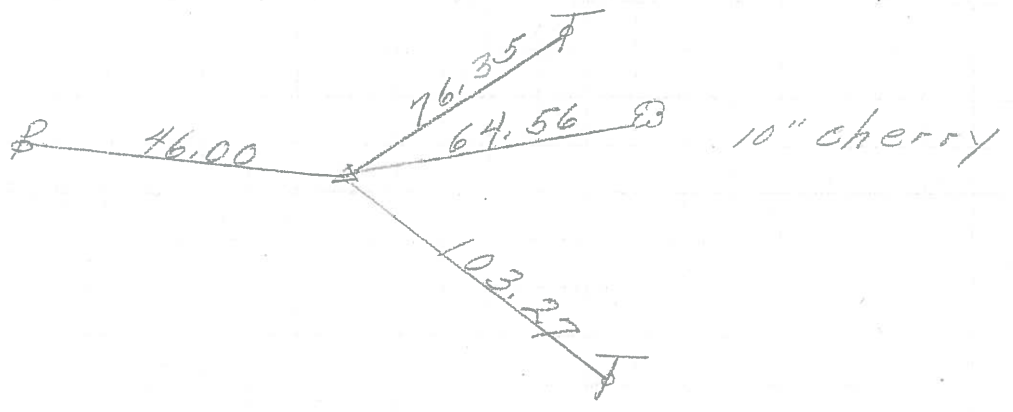
P.I. **133C**
 306+27.45
 3.5' off edge Permit.
 Iron Pin 3" down



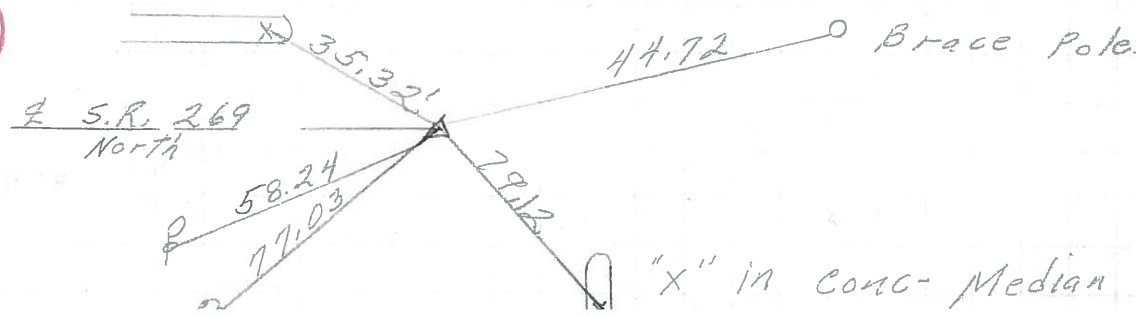
P.I. **133B**
 294+02.70
 3" down
 small spk.



P.I. **133A**
 282+81.5
 small R.R. SPK.



P.O.T. **133**
 276+61.45



PERSONNEL TITLE PERSONNEL TITLE COUNTY Ottawa DATE 9-5-68
Schneider Potts
Mosser S. R. 163 WEATHER Fair
Barbour SEC. S.R.#269 - East TEMP. 80°
Redding

DESCRIPTION Ties for Control Points JOB NO.

