

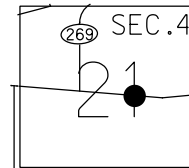
O.D.O.T. DISTRICT 2 SURVEY OFFICE (USE ONLY)

PERSONNEL _____ REFERENCE NO. 133 B SHEET 11 OF 66
 NOTES MOSE DATE 5/5/11 ROUTE SR 163
 H.C. MOSE WEATHER SUNNY COUNTY OTTAWA
 R.C. LUMBREZER TEMP. 60° TOWNSHIP DANBURY
 SECTION 4-21

DWG BY NIESE PID 107060

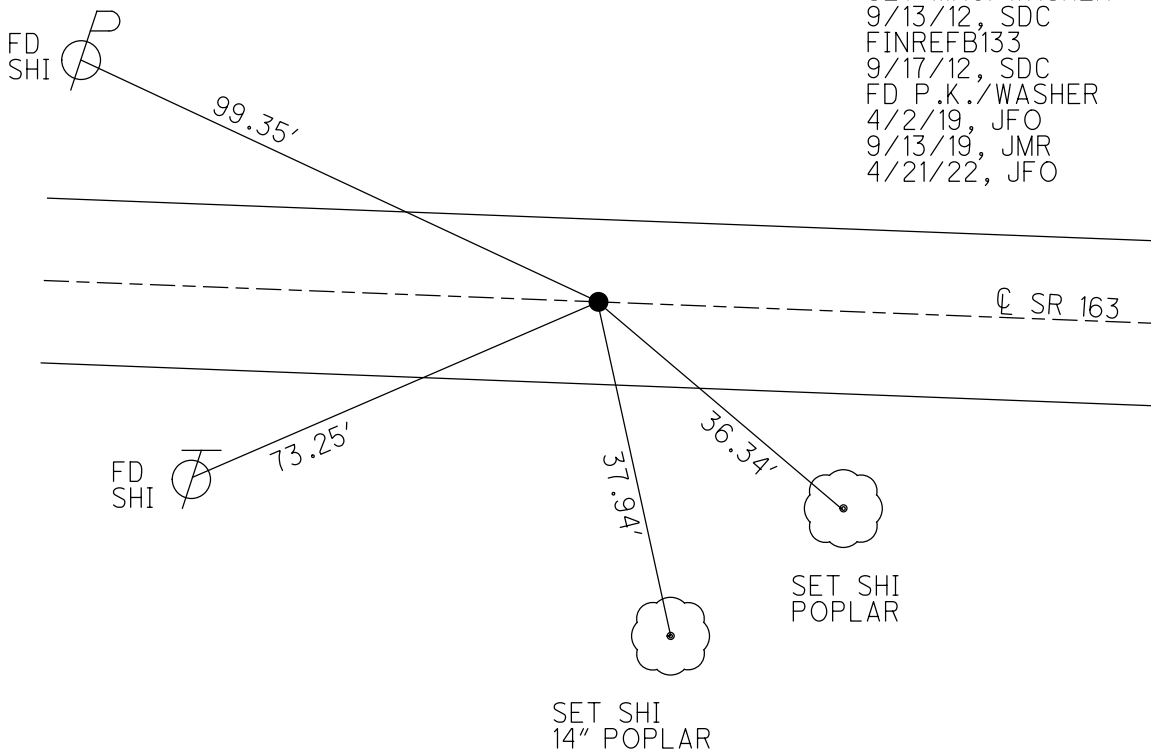
TYPE MONUMENT P.K./WASHER
 ON SURFACE - ~~BELOW~~ ON
 OFFSET C PAVEMENT 0.5' ~~LT~~ : RT
11.4' TO RT EDGE PAVEMENT
 STATION: 1696+98

NOTE:
 THIS MAP IS FOR ODOT PURPOSES ONLY
 TO INDEX REFERENCE TIES, AND DOES NOT
 REPRESENT TRUE LAND SUBDIVISION.



HORIZ. DATUM: NAD83(2011) GEOID: 2012A
 GRID: NORTHING: 679399.384 EASTING: 1882052.110

RECORD: P.I.
 25#64 = 01°21' LT
 STA.294+02.70
 SET P.K./WASHER
 ATOP BOAT SPIKE/WASHER
 1983 PLAN
 SET P.K./WASHER
 6/4/96
 FD P.K./WASHER
 9/28/09, 4/8/10
 SV106
 4/23/10, KPM
 SET MAG/WASHER
 9/13/12, SDC
 FINREFB133
 9/17/12, SDC
 FD P.K./WASHER
 4/2/19, JFO
 9/13/19, JMR
 4/21/22, JFO



O.D.O.T. DISTRICT 2 SURVEY OFFICE (USE ONLY)

PERSONNEL _____ REFERENCE NO. 133 B SHEET 11 OF 66
 NOTES MOSER DATE 5/5/11 ROUTE SR 163
 H.C. MOSER WEATHER SUNNY COUNTY OTTAWA
 R.C. LUMBREZER TEMP. 60° TOWNSHIP DANBURY
 DWG BY NIESE PID 107060 SECTION 4-21

TYPE MONUMENT P.K./WASHER

ON SURFACE - ~~BELOW~~ ON

OFFSET Q PAVEMENT 0.5' ~~±~~ : RT

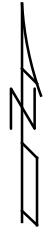
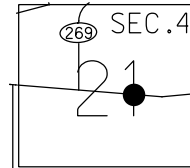
11.4' TO RT EDGE PAVEMENT

STATION: 1696+98

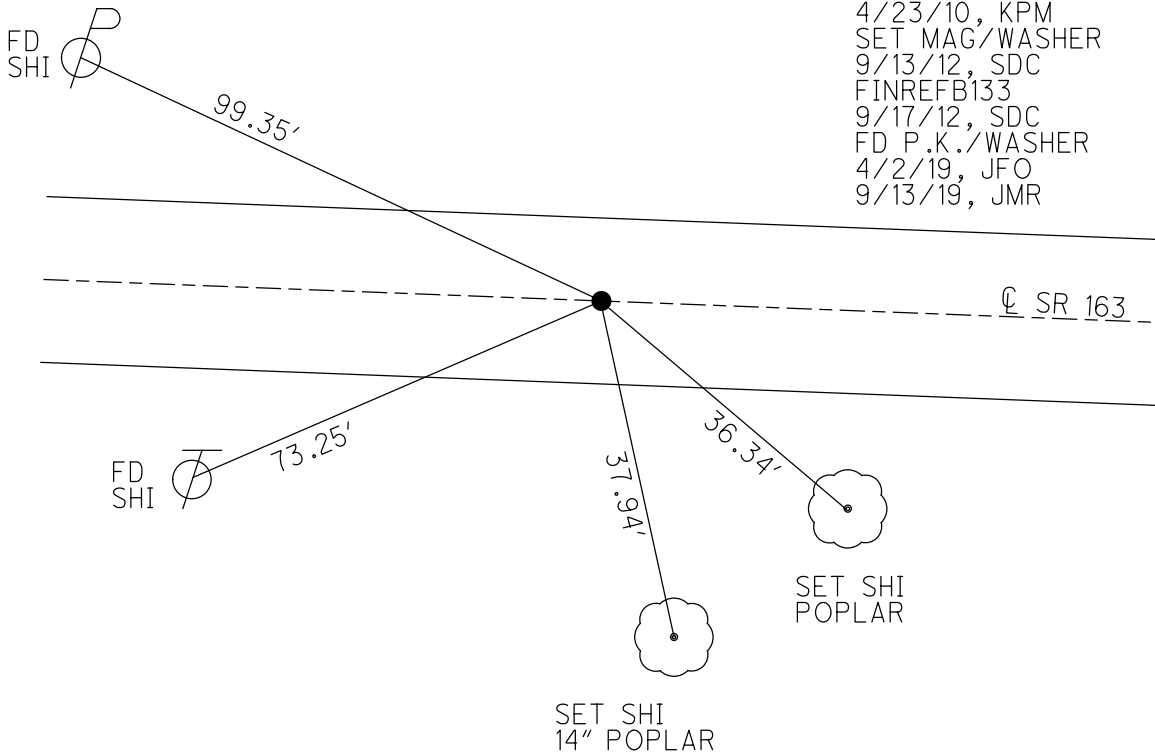
HORZ. DATUM: NAD83(2011) GEOID: 2012A

GRID: NORTHING: 679399.384 EASTING: 1882052.110

NOTE:
THIS MAP IS FOR ODOT PURPOSES ONLY
TO INDEX REFERENCE TIES, AND DOES NOT
REPRESENT TRUE LAND SUBDIVISION.



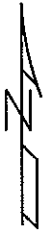
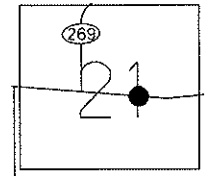
RECORD: P.I.
 25#64 = 01°21' LT
 STA. 294+02.70
 SET P.K./WASHER
 ATOP BOAT SPIKE/WASHER
 1983 PLAN
 SET P.K./WASHER
 6/4/96
 FD P.K./WASHER
 9/28/09, 4/8/10
 SV106
 4/23/10, KPM
 SET MAG/WASHER
 9/13/12, SDC
 FINREFB133
 9/17/12, SDC
 FD P.K./WASHER
 4/2/19, JFO
 9/13/19, JMR



O.D.O.T. DISTRICT 2 SURVEY OFFICE (USE ONLY)

PERSONNEL _____ REFERENCE NO. 133 B SHEET 11 OF 63
 NOTES MOSER DATE 5/5/11 ROUTE SR 163
 H.C. MOSER WEATHER SUNNY COUNTY OTTAWA
 R.C. LUMBREZER TEMP. 60° TOWNSHIP DANBURY
 _____ SECTION 4-21

TYPE MONUMENT P.K./WASHER
 ON SURFACE - ~~BELOW~~ ON
~~LEFT~~ - CL PAV'T - RIGHT 0.5'
11.4' TO RT. EDGE PAVEMENT
 S.L.M. 1696+98



Grid: Northing: 679399.384 Easting: 1882052.110

1983 RECORD
 P.I. $\Delta = 01^{\circ}21'$ LT. (PLAN)
 294+02.70
 SET P.K./WASHER ATOP
 BOAT SPIKE/WASHER
 1.5' RT. CL PAV'T

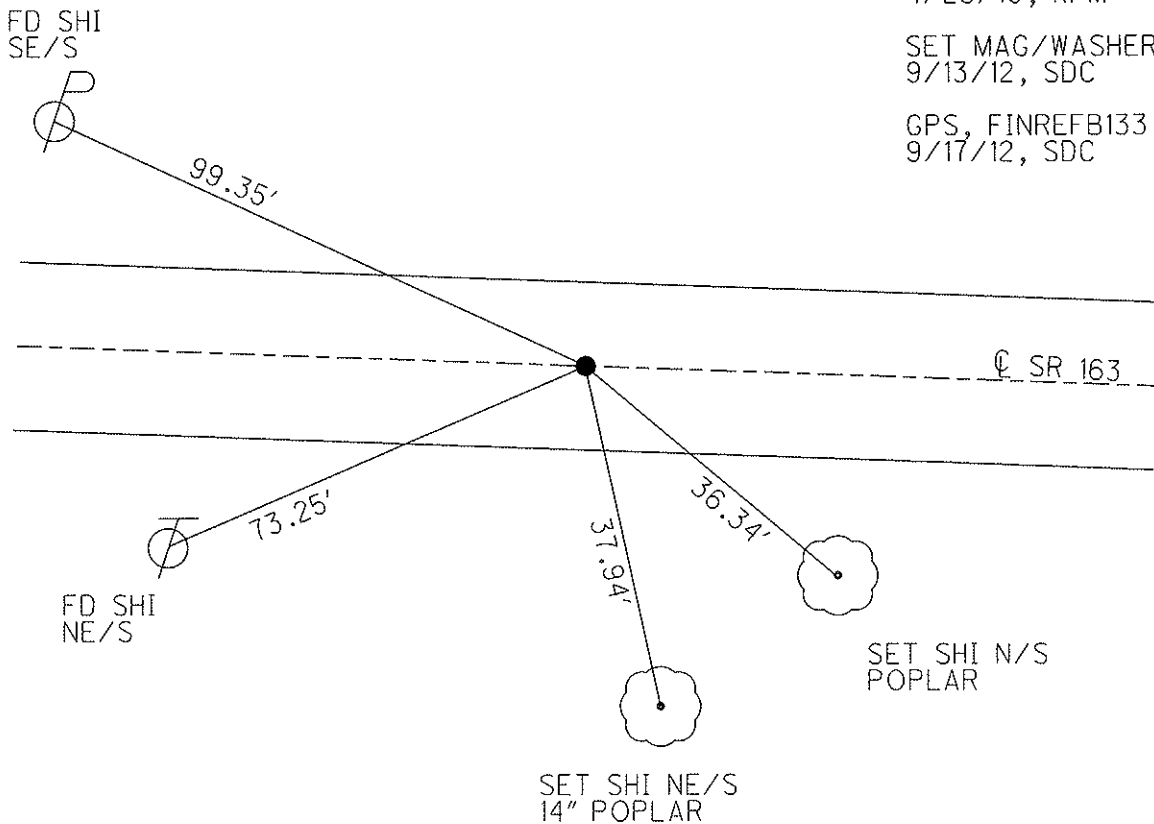
RESET P.K./WASHER
 6/4/96

FD P.K./WASHER
 9/28/09, 4/8/10
 KPM

GPS, SV106
 4/23/10, KPM

SET MAG/WASHER
 9/13/12, SDC

GPS, FINREFB133
 9/17/12, SDC



O.D.O.T. DISTRICT 2 SURVEY OFFICE

PERSONNEL

REFERENCE NO. 133-B

SHEET 6 OF 52

NOTES CANTERBURY

H.C. LOHRKE

R.C. Rousos

DATE 5-17-95

WEATHER CLOUDY

TEMP. +70°F

ROUTE S.R. 163

COUNTY OTTAWA

TOWNSHIP DANBURY

SECTION CON. WEST RESERVE

T R

Reset P.K./WASHER

6-4-96

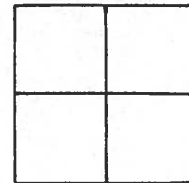
TYPE MONUMENT PK NAIL/WASHER

ON SURFACE - BELOW ON SURFACE

LEFT - ℄ PAV'T. - RIGHT 1.2' RT. ℄

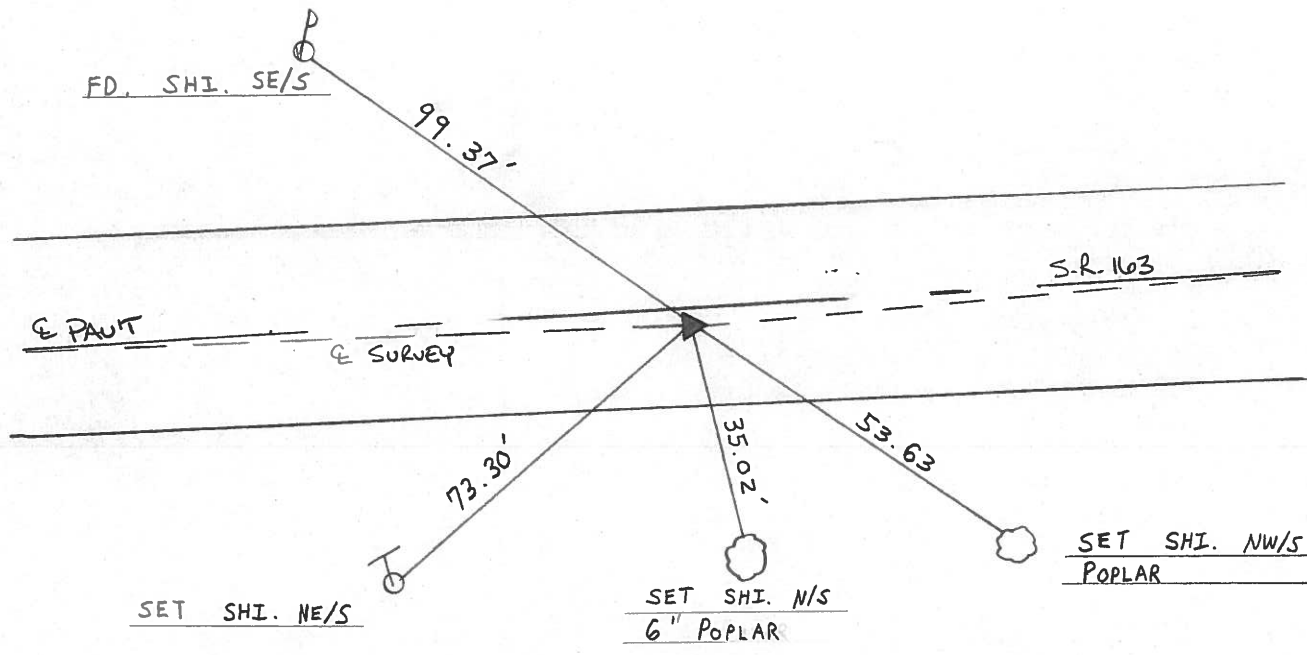
11.2' TO RT EDGE PAVEMENT

S.L.M. 1696 + 98



1983 Record
P.I. $\Delta 01^{\circ}21' LT.$ (Plan)
294 + 02.70
SET PK & WASHER atop
BOAT SPIKE & WASHER
1.5' RT. & PAVEMENT

NOTE: POINT IS $\pm 6'$ EAST OF 32 MILE MARKER.



Q.D.O.T. DISTRICT 2 SURVEY OFFICE

SHEET 5 OF

County Ottawa S.R. #163

Date 11/21/83

Township Danbury

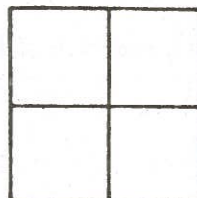
Weather sunny-windy

Section _____

Temp. 50°

T N, R E

Personnel Cronin



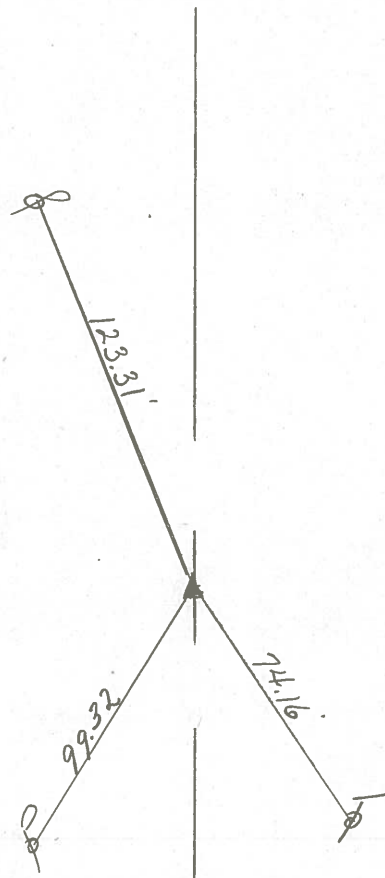
Ripple

Geyman

Barbour

#133-B

Plan
P.I. Δ=01'21" Lt
294+02.70
Set P.R. & washer at top
boat spike & washer
1.5' Rt. & Pavement



Q.S.R. #163B

PERSONNEL TITLE PERSONNEL TITLE

Cronin
Ripple
Geyman

COUNTY Ottawa

DATE 8/15/83

S. R. #163

WEATHER sunny

SEC. 3176

TEMP. 85°

DESCRIPTION Control Point Ties

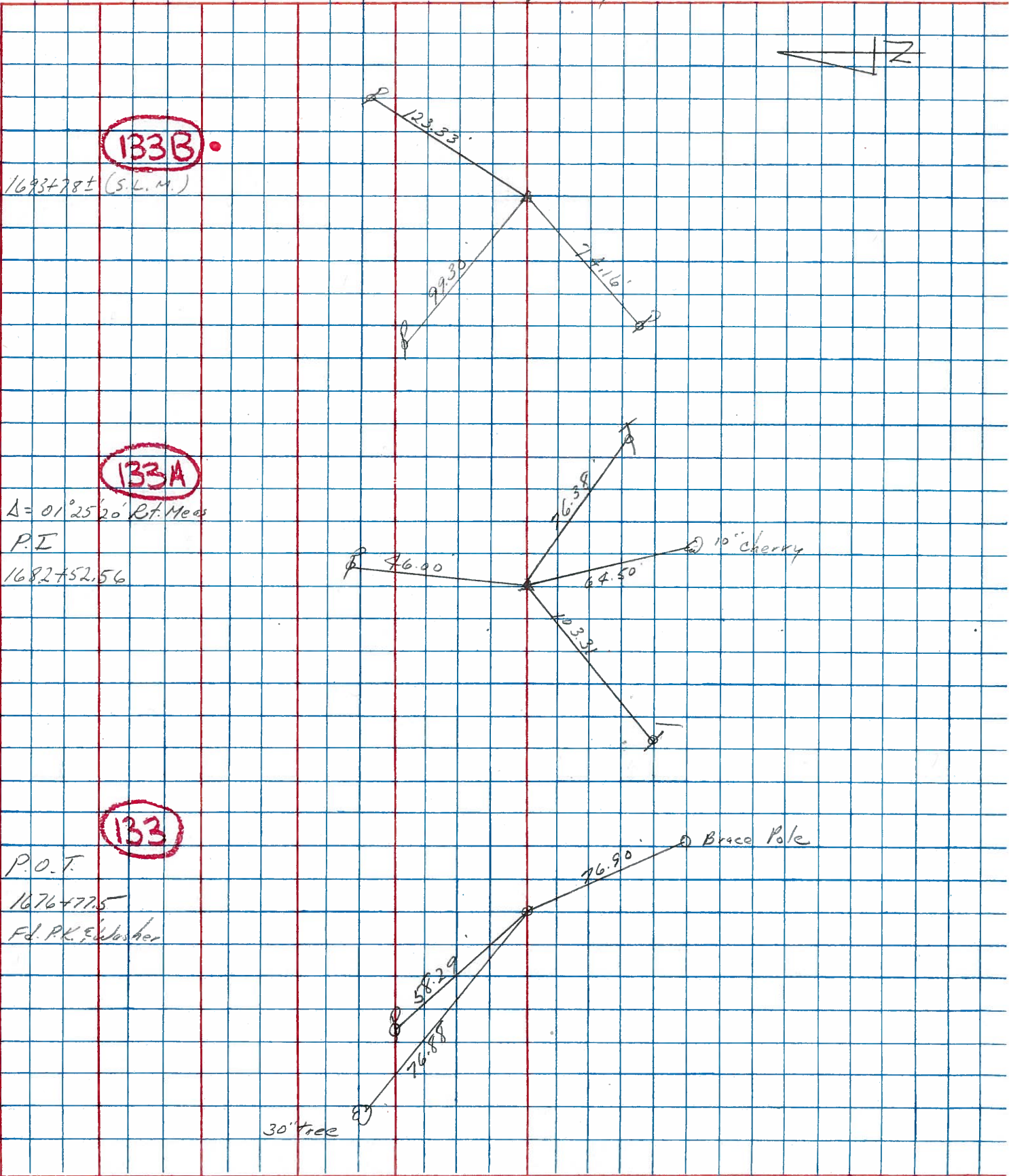
JOB NO.

LEFT

CENTER LINE

Survey

RIGHT



133B

1693±78± (S.L.M.)

133A

Δ = 01°25'20" Rt. Meas

P.I

1682±52.56

133

P.O.T.

1676±77.5

Fd. PK. Washer

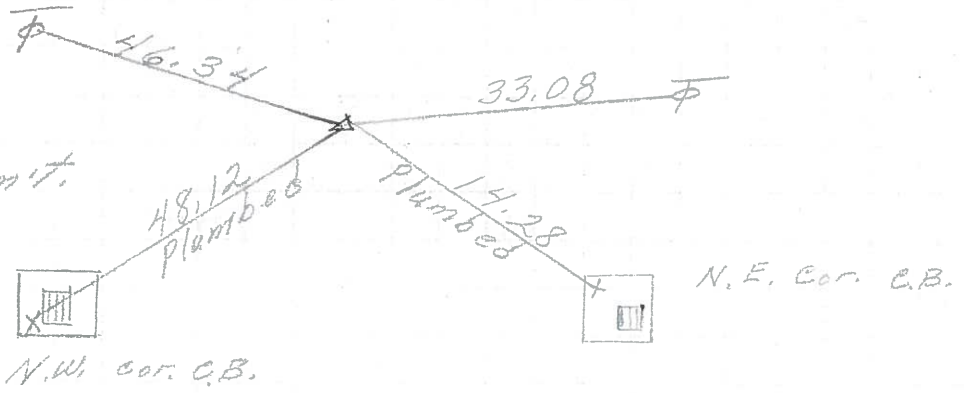
30' tree

Brace Pole

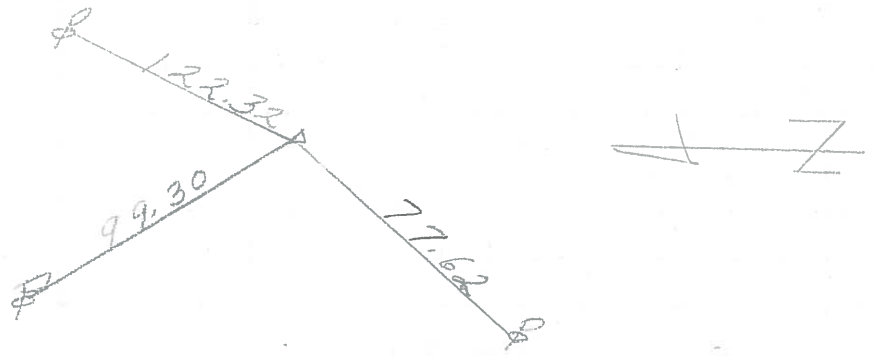
10" cherry

PERSONNEL	TITLE	PERSONNEL	TITLE	COUNTY	DATE
Schneider				Ottawa	6-9-71
Mosser				S. R. 163	WEATHER
Barbour				SEC. 4	TEMP.
Geyman					
DESCRIPTION	S.R. # 269 East				JOB NO.
	LEFT	CENTER LINE	RIGHT		

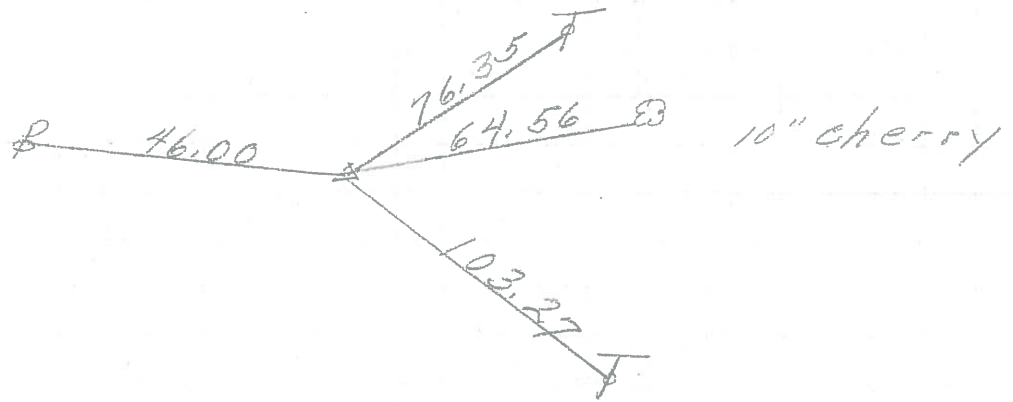
P.I. **133L**
 306+27.45
 3.5' off edge Parmit.
 Iron Pin 3" down



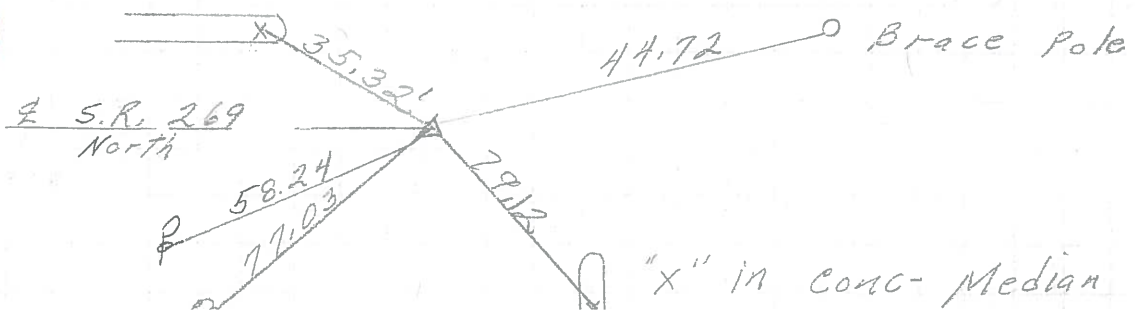
P.I. **133B**
 294+02.70
 3" down
 small spk.



P.I. **133A**
 282+81.5
 small R.R. spk.



P.O.T. **133**
 276+61.45



PERSONNEL TITLE PERSONNEL TITLE
 Schneider _____ Potts _____
 Mosser _____
 Barbour _____
 Redding _____

COUNTY Ottawa DATE 9-5-68
 S. R. 163 WEATHER Fair
 SEC. S.R.#269 - East TEMP. 80°

DESCRIPTION Ties for Control Points JOB NO. _____

	LEFT	CENTER LINE	RIGHT
P.I. 334+08.23 P.K. Nail on surface 6371	134A	28" Maple 27.37 83.70 92.24 83.70 92.24	Restaurant 2nd Brick 91.03 72.75 cable pole
P.I. 315+27.53 P.K. Nail on surface All dist. Plumbed 6370	134	Brace pole 53.74 46.92	46.98 Cable pole 19.60 Church Rd. sign
P.I. 306+27.45 off Permit Iron Pin 6369	133C	76.29 48.12 Plumbed 17.28 N.W. Cor. C.B.	33.08 Cable pole 17.28 N.E. Cor. C.B.
P.I. 294+02.70 P.K. Nail on surface 6368	133B	123.32 99.30	77.62
P.I. small R.R. spk. 6367	133A	75.97	76.35 64.56 @ 10" cherry 103.32