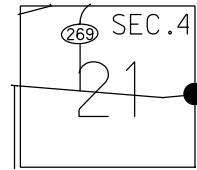


O.D.O.T. DISTRICT 2 SURVEY OFFICE (USE ONLY)

PERSONNEL	REFERENCE NO. <u>134</u>	SHEET <u>13</u> OF <u>66</u>
NOTES <u>MOSER</u>	DATE <u>5/5/11</u>	ROUTE <u>SR 163</u>
H.C. <u>MOSER</u>	WEATHER <u>SUNNY</u>	COUNTY <u>OTTAWA</u>
R.C. <u>LUMBREZER</u>	TEMP. <u>60°</u>	TOWNSHIP <u>DANBURY</u>
		SECTION <u>4-21</u>
DWG BY <u>NIESE</u>	PID <u>107060</u>	

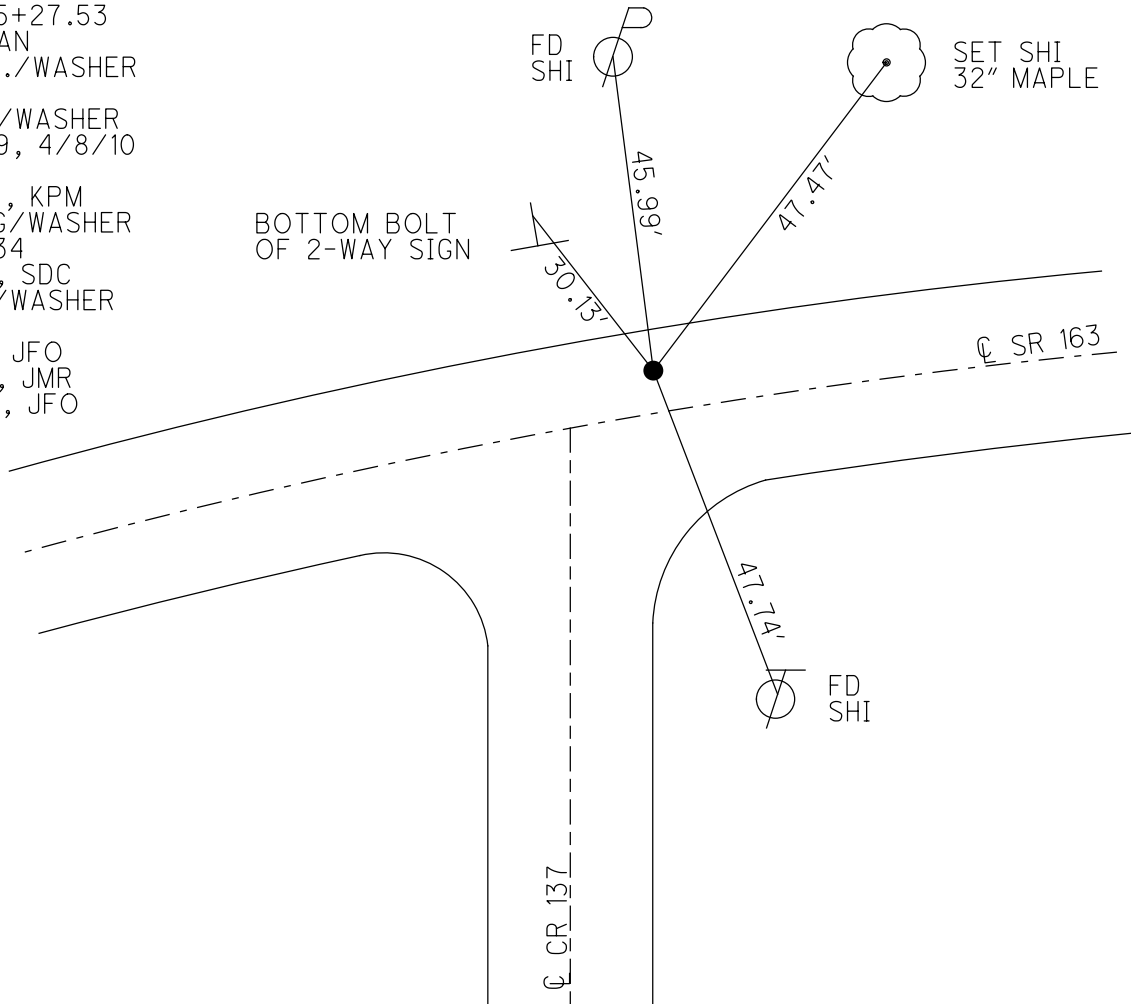
TYPE MONUMENT P.K./WASHER
 ON SURFACE - ~~BELOW~~ ON
 OFFSET C PAVEMENT 5.1' LT : ~~RT~~
6.7' TO LT EDGE PAVEMENT
 STATION: 1718+25

NOTE:
THIS MAP IS FOR ODOT PURPOSES ONLY
TO INDEX REFERENCE TIES, AND DOES NOT
REPRESENT TRUE LAND SUBDIVISION.



HORIZ.DATUM: NAD83(2011) GEOID: 2012A
 GRID: NORTHING: 679559.639 EASTING: 1884149.950

RECORD: P.I.
 $\Delta = 8^{\circ}40' \text{ RT}$
 STA. 315+27.53
 1983 PLAN
 SET P.K./WASHER
 6/4/96
 FD P.K./WASHER
 9/28/09, 4/8/10
 SV108
 4/23/10, KPM
 SET MAG/WASHER
 FINREF134
 9/19/12, SDC
 FD MAG/WASHER
 REF134
 4/2/19, JFO
 9/13/19, JMR
 4/21/22, JFO



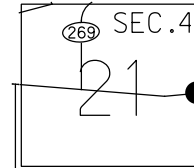
BOTTOM BOLT
 OF 2-WAY SIGN

O.D.O.T. DISTRICT 2 SURVEY OFFICE (USE ONLY)

PERSONNEL _____ REFERENCE NO. 134 SHEET 13 OF 66
 NOTES MOSER DATE 5/5/11 ROUTE SR 163
 H.C. MOSER WEATHER SUNNY COUNTY OTTAWA
 R.C. LUMBREZER TEMP. 60° TOWNSHIP DANBURY
 DWG BY NIESE PID 107060 SECTION 4-21

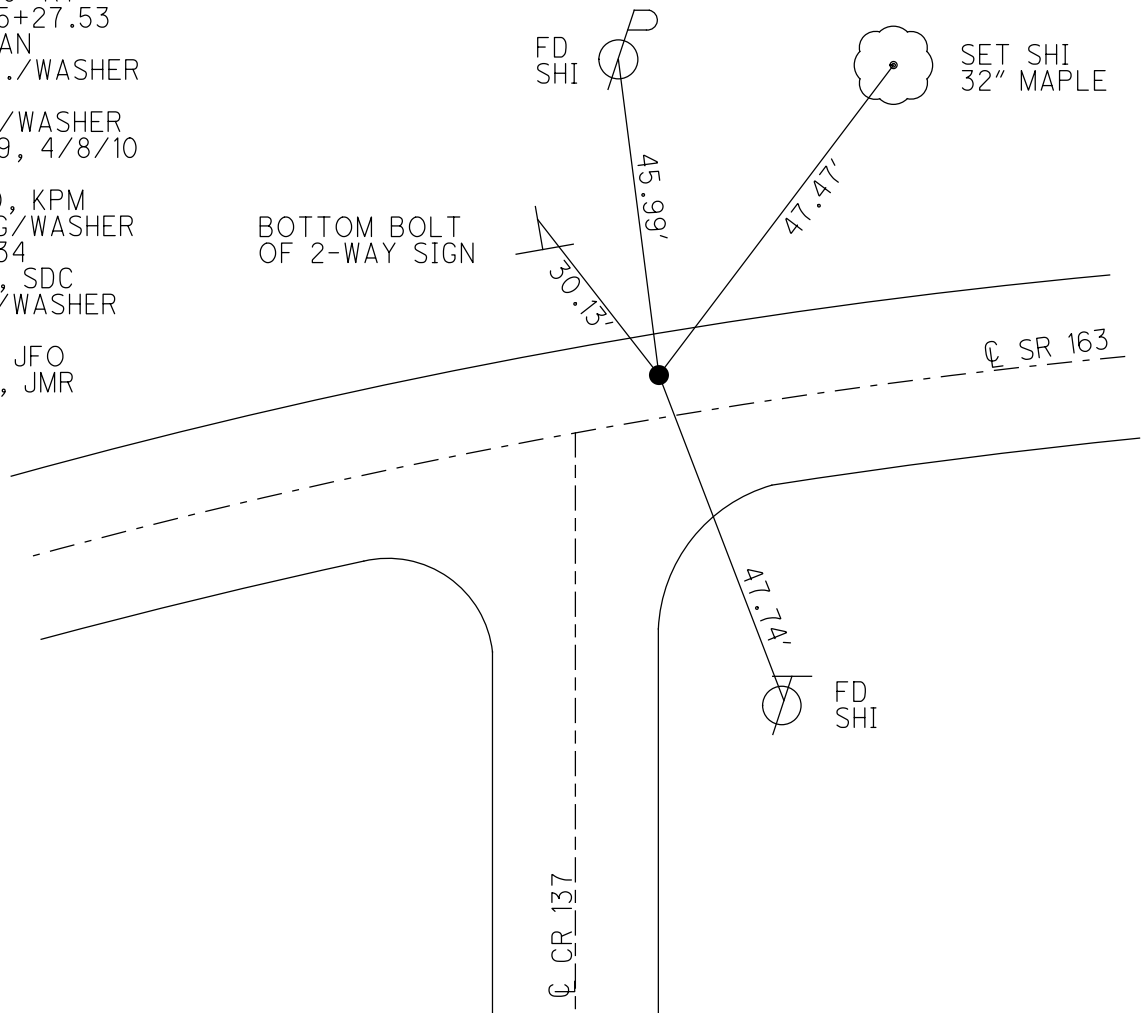
TYPE MONUMENT P.K./WASHER
 ON SURFACE - ~~BELOW~~ ON _____
 OFFSET \odot PAVEMENT 5.1' LT : ~~RT~~
6.7' TO LT EDGE PAVEMENT
 STATION: 1718+25

NOTE:
THIS MAP IS FOR ODOT PURPOSES ONLY.
TO INDEX REFERENCE TIES, AND DOES NOT
REPRESENT TRUE LAND SUBDIVISION.



HORIZ.DATUM: NAD83(2011) GEOID: 2012A
 GRID: NORTHING: 679559.639 EASTING: 1884149.950

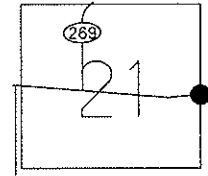
RECORD: P.I.
 $\Delta = 8^{\circ}40'$ RT
 STA. 315+27.53
 1983 PLAN
 SET P.K./WASHER
 6/4/96
 FD P.K./WASHER
 9/28/09, 4/8/10
 SV108
 4/23/10, KPM
 SET MAG/WASHER
 FINREF134
 9/19/12, SDC
 FD MAG/WASHER
 REF134
 4/2/19, JFO
 9/13/19, JMR



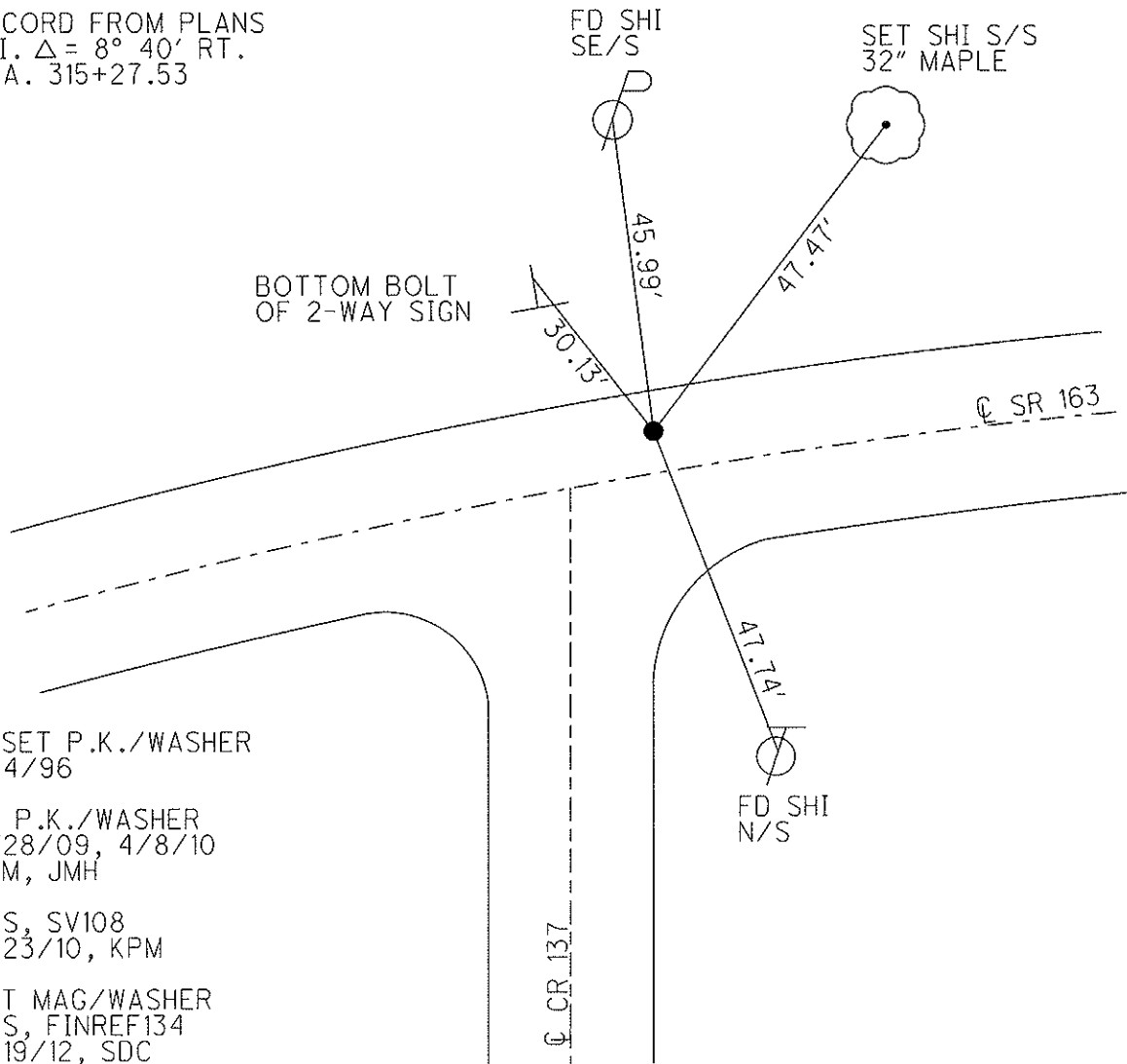
O.D.O.T. DISTRICT 2 SURVEY OFFICE (USE ONLY)

PERSONNEL	REFERENCE NO. <u>134</u>	SHEET <u>13</u> OF <u>63</u>
NOTES <u>MOSER</u>	DATE <u>5/5/11</u>	ROUTE <u>SR 163</u>
H.C. <u>MOSER</u>	WEATHER <u>SUNNY</u>	COUNTY <u>OTTAWA</u>
R.C. <u>LUMBREZER</u>	TEMP. <u>60°</u>	TOWNSHIP <u>DANBURY</u>
		SECTION <u>4-21</u>

TYPE MONUMENT P.K./WASHER
 ON SURFACE - ~~BELOW~~ ON
 LEFT - CL PAV'T - ~~RIGHT~~ 5.1'
6.7' TO LT EDGE PAVEMENT
 S.L.M. 1718+25
 Grid: Northing: 679559.627 Easting: 1884149.884



RECORD FROM PLANS
 P.I. Δ = 8° 40' RT.
 STA. 315+27.53



RESET P.K./WASHER
 6/4/96
 FD P.K./WASHER
 9/28/09, 4/8/10
 KPM, JMH
 GPS, SV108
 4/23/10, KPM
 SET MAG/WASHER
 GPS, FINREF134
 9/19/12, SDC

O.D.O.T. DISTRICT 2 SURVEY OFFICE

PERSONNEL _____

REFERENCE NO. 134

SHEET 8 OF 52

NOTES LOENRKE

H.C. CANTERBURY

R.C. ROUSOS

DATE 5-17-95

WEATHER CLOUDY

TEMP. +70

ROUTE S.R. 163

COUNTY OTTAWA

TOWNSHIP DANBURY

SECTION _____

T _____ R _____

Reset

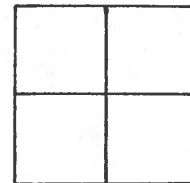
TYPE MONUMENT P.K. / WASHER 6-4-96

ON SURFACE - ~~BELOW~~ Yes

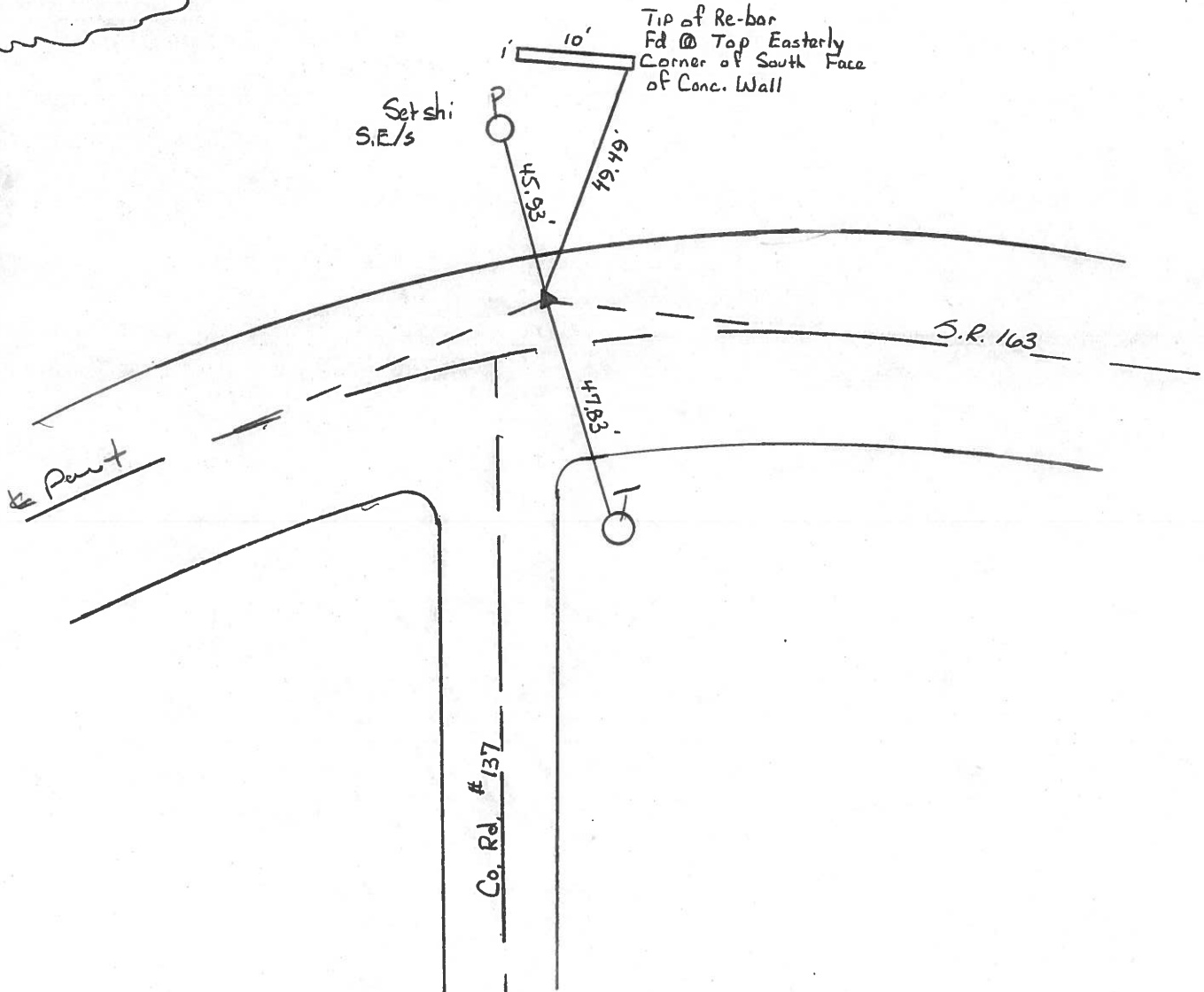
LEFT-℄ PAV'T. - ~~RIGHT~~ 4.6' Lt

7.5' TO Lt EDGE PAVEMENT

S.L.M. 1718+25



RECORD P.I.
Sta 315+27.53
 $\Delta = 08^\circ - 40' R+$
from PLANS



ODOT. DISTRICT 2 SURVEY OFFICE

SHEET 7 OF

County Ottawa S.R. # 163

Date 11/21/83

Township Danbury

Weather sunny - windy

Section _____

Temp. 50°

T-N, R-E

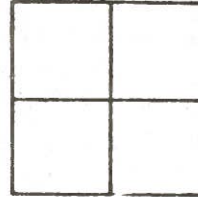
Personnel Cronin

Ripple

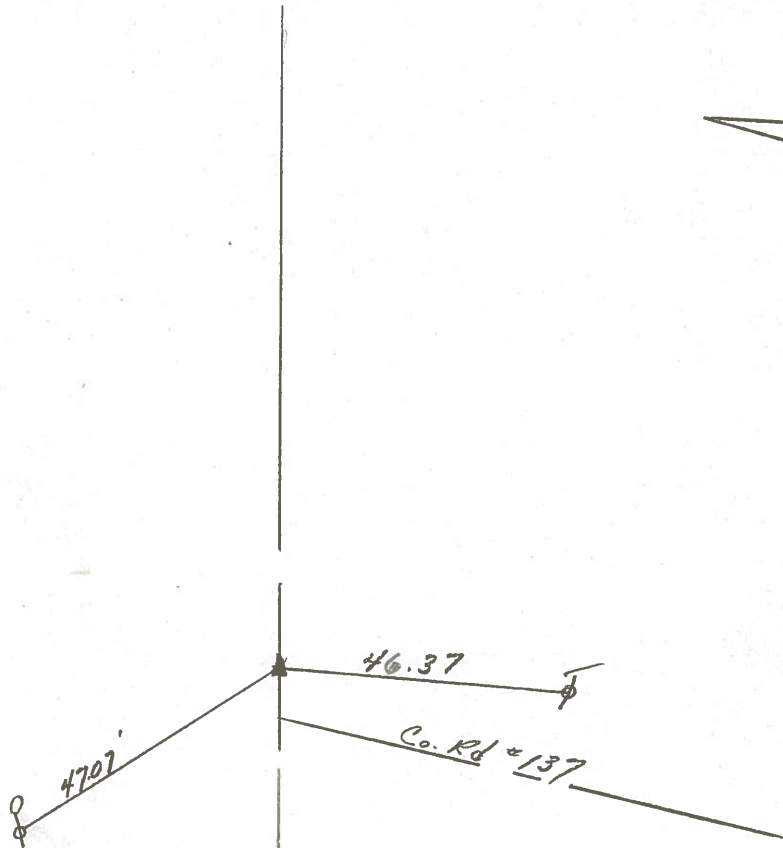
Geyman

Barbour

#134



Plan
P.I. Δ = 08° 40 Rt.
315 + 27.53
set P.K. & washer atop
P.K. 4' Lt. & Permit.



2 S.R. #163A

PERSONNEL	TITLE	PERSONNEL	TITLE

COUNTY Ottawa DATE 6-9-71

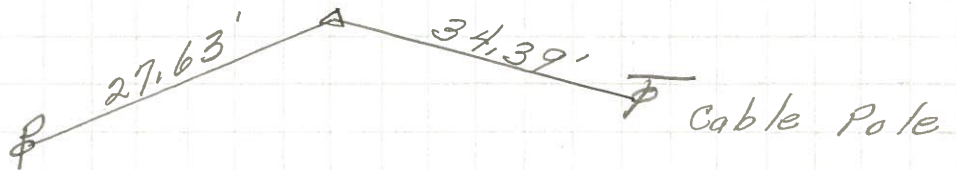
S. R. 163 WEATHER Sunny

SEC. 4 & 2 TEMP. 20°

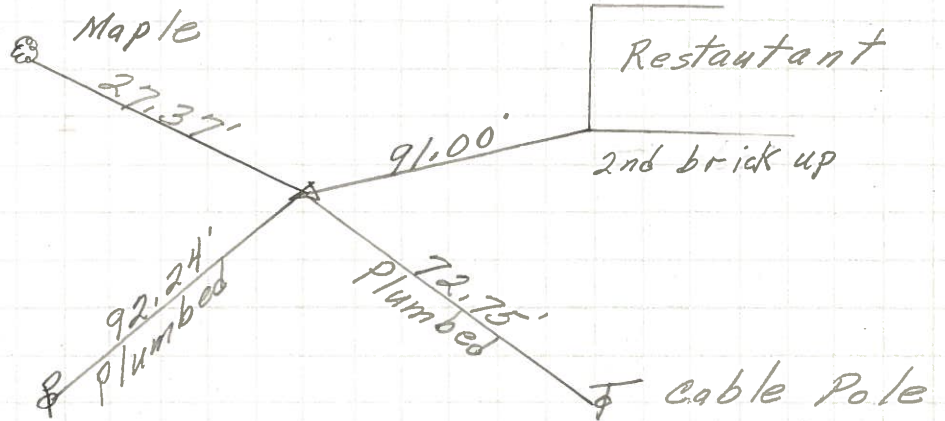
DESCRIPTION S.R. # 269 East JOB NO. _____

LEFT CENTER LINE RIGHT

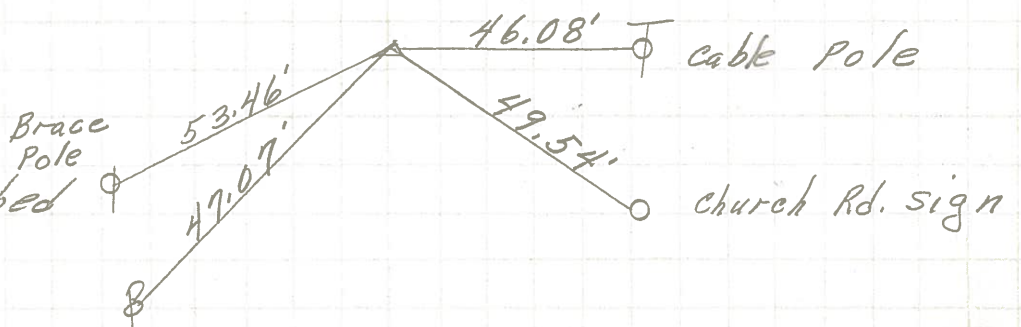
P.I. **(135)**
 345+46.91
 P.K. on surface



P.I. **(134A)**
 334+08.23
 Small spk.
 on surface



P.I. **(134)**
 315+27.53
 P.K. Nail
 on surface
 All dist. Plumbed



PERSONNEL	TITLE	PERSONNEL	TITLE
Schneider		Patt's	
Mosser			
Barbour			
Redding			

COUNTY Ottawa DATE 9-5-68
 S. R. 163 WEATHER Fair
 SEC. S.R.#269 - East TEMP. 80°

DESCRIPTION Ties for Control Points JOB NO. _____

