

O.D.O.T. DISTRICT 2 SURVEY OFFICE (USE ONLY)

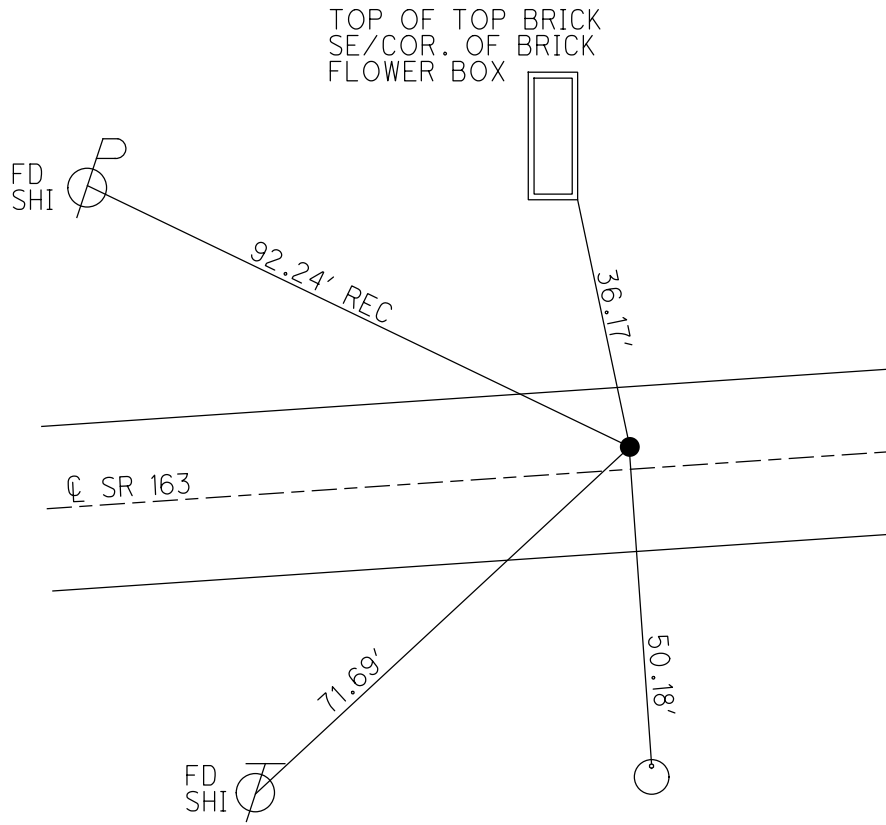
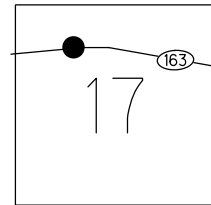
PERSONNEL _____ REFERENCE NO. 134 A SHEET 14 OF 66
 NOTES LUMBREZER DATE 5/6/11 ROUTE SR 163
 H.C. FINTEL WEATHER CLOUDY COUNTY OTTAWA
 R.C. LUMBREZER TEMP. 60° TOWNSHIP DANBURY
 SECTION 2-17

DWG BY NIESE PID 107060

TYPE MONUMENT P.K./WASHER
 ON SURFACE - ~~BELOW~~ ON _____
 OFFSET \odot PAVEMENT 2.8' LT : ~~RT~~
8.9' TO LT EDGE PAVEMENT
 STATION: 1737+14

HORIZ.DATUM: NAD83(2011) GEOID: 2012A
 GRID: NORTHING: 679733.226 EASTING: 1886022.758

NOTE:
 THIS MAP IS FOR ODOT PURPOSES ONLY.
 TO INDEX REFERENCE TIES, AND DOES NOT
 REPRESENT TRUE LAND SUBDIVISION.



RECORD: P.I.
 STA. 334+08.23
 $\Delta = 04^\circ 42' RT$
 1983 PLAN
 FD P.K./WASHER
 5/17/95, CL
 SET P.K./WASHER
 ATOP P.K./WASHER
 SET P.K./WASHER
 6/4/96
 FD P.K./WASHER
 9/28/09, 4/8/10
 SV109
 4/23/10, KPM
 $\Delta = 4^\circ 42' 34'' RT$
 $D = 2^\circ 00' 14''$
 $R = 2859.12'$
 $T = 117.57'$
 $L = 235.00'$
 $E = 2.42'$
 $C = 234.93'$
 5/18/11
 SET MAG/WASHER
 9/13/12, SDC
 FINREFA134
 9/17/12, SDC
 FD MAG/WASHER
 REFA134
 4/1/19, JFO
 9/12/19, JMR
 4/21/22, JFO

FD 5/8" BOLT N/S
 SIGN POLE FOR
 PENINSULA RESTURANT

O.D.O.T. DISTRICT 2 SURVEY OFFICE (USE ONLY)

PERSONNEL _____ REFERENCE NO. 134 A SHEET 14 OF 63
 NOTES LUMBREZER DATE 5/6/11 ROUTE SR 163
 H.C. FINTEL WEATHER CLOUDY COUNTY OTTAWA
 R.C. LUMBREZER TEMP. 60° TOWNSHIP DANBURY
 DWG BY NIESE PID 107060 SECTION 2-17

TYPE MONUMENT P.K./WASHER

ON SURFACE - ~~BELOW~~ ON _____

OFFSET \varnothing PAVEMENT 2.8' LT : ~~RT~~

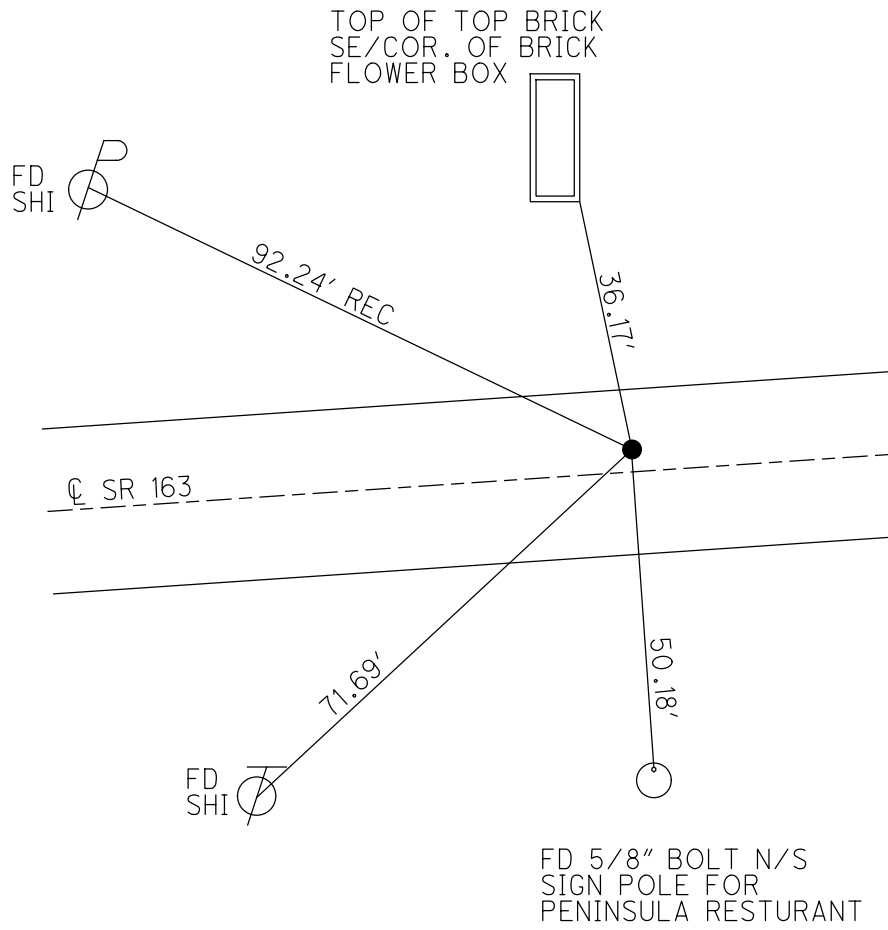
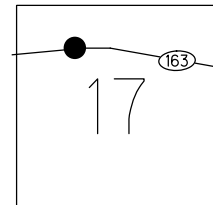
8.9' TO LT EDGE PAVEMENT

STATION: 1737+14

HORZ.DATUM: NAD83(2011) GEOID: 2012A

GRID: NORTHING: 679733.226 EASTING: 1886022.758

NOTE:
THIS MAP IS FOR ODOT PURPOSES ONLY
TO INDEX REFERENCE TIES, AND DOES NOT
REPRESENT TRUE LAND SUBDIVISION.



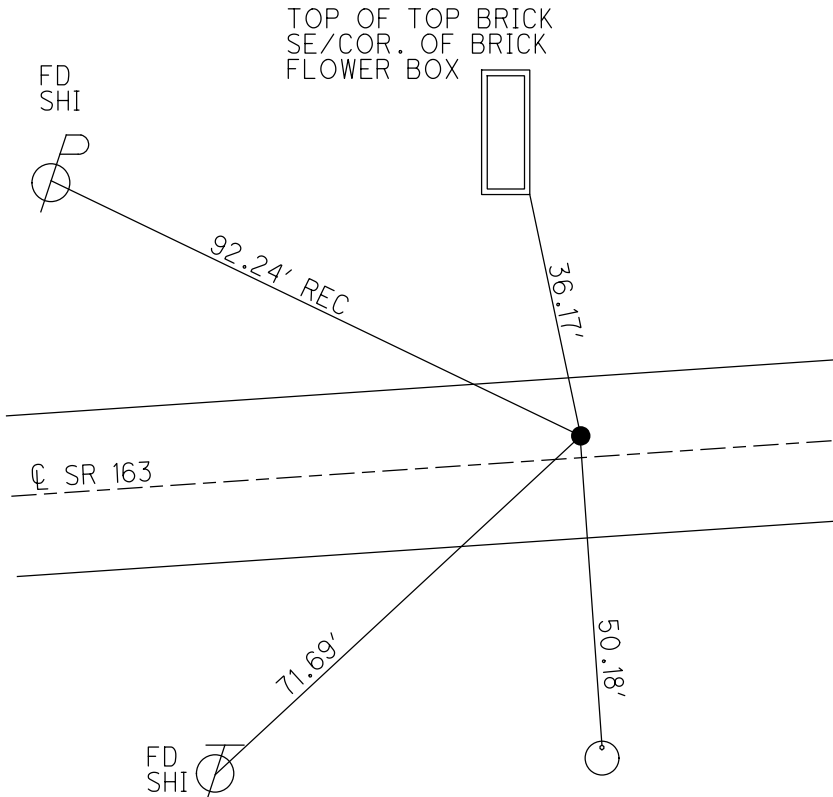
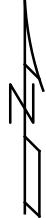
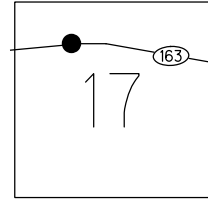
RECORD: P.I.
 STA.334+08.23
 $\Delta = 04^{\circ}42' RT$
 1983 PLAN
 FD P.K./WASHER
 5/17/95, CL
 SET P.K./WASHER
 ATOP P.K./WASHER
 SET P.K./WASHER
 6/4/96
 FD P.K./WASHER
 9/28/09, 4/8/10
 SV109
 4/23/10, KPM
 $\Delta = 4^{\circ} 42' 34'' RT$
 $D = 2^{\circ} 00' 14''$
 $R = 2859.12'$
 $T = 117.57'$
 $L = 235.00'$
 $E = 2.42'$
 $C = 234.93'$
 5/18/11
 SET MAG/WASHER
 9/13/12, SDC
 FINREFA134
 9/17/12, SDC
 FD MAG/WASHER
 REFA134
 4/1/19, JFO
 9/12/19, JMR

O.D.O.T. DISTRICT 2 SURVEY OFFICE (USE ONLY)

PERSONNEL _____ REFERENCE NO. 134 A SHEET 14 OF 63
 NOTES LUMBREZER DATE 5/6/11 ROUTE SR 163
 H.C. FINTEL WEATHER CLOUDY COUNTY OTTAWA
 R.C. LUMBREZER TEMP. 60° TOWNSHIP DANBURY
 _____ SECTION 2-17

TYPE MONUMENT P.K./WASHER
 ON SURFACE - ~~BELOW~~ ON _____
 LEFT - CL PAV'T - ~~RIGHT~~ 2.8'
8.9' TO LT EDGE PAVEMENT
 S.L.M. 1734+10.53
 GRID: NORTHING: 679733.209 EASTING: 1886022.751

NOTE:
THIS MAP IS FOR ODOT PURPOSES ONLY.
TO INDEX REFERENCE TIES, AND DOES NOT
REPRESENT TRUE LAND SUBDIVISION.



RECORD: P.I.
 $\Delta = 04^\circ 42' RT$
 1983 PLAN
 STA. 334+08.23
 FD P.K./WASHER
 5/17/95, CL
 SET P.K./WASHER
 ATOP P.K./WASHER
 SET P.K./WASHER
 6/4/96
 FD P.K./WASHER
 9/28/09, 4/8/10
 KPM, JMH
 GPS, SV109
 4/23/10, KPM
 STA. 1734+10.53
 $\Delta = 4^\circ 42' 34'' RT$
 $D = 2^\circ 00' 14''$
 $R = 2859.12'$
 $T = 117.57'$
 $L = 235.00'$
 $E = 2.42'$
 $C = 234.93'$
 $C.B. = N 87^\circ 03' 36'' E$
 5/18/11
 SET MAG/WASHER
 9/13/12, SDC
 FINREFA134
 9/17/12, SDC

FD 5/8" BOLT N/S
 SIGN POLE FOR
 PENINSULA RESTURANT

O.D.O.T. DISTRICT 2 SURVEY OFFICE

PERSONNEL

REFERENCE NO. 134A

SHEET 9 OF 52

NOTES CANTERBURY

H.C. LOHRKE

R.C. ROUSOS

DATE 5-17-95

WEATHER CLOUDY

TEMP. +70°F

ROUTE S.R. 163

COUNTY OTTAWA

TOWNSHIP DAUBURG

SECTION Com. West. Reserve

T R

Reset

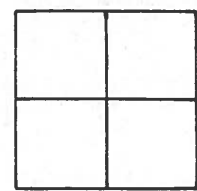
TYPE MONUMENT PK NAIL/WASHER 6-7-96

ON SURFACE - BELOW ON SURFACE

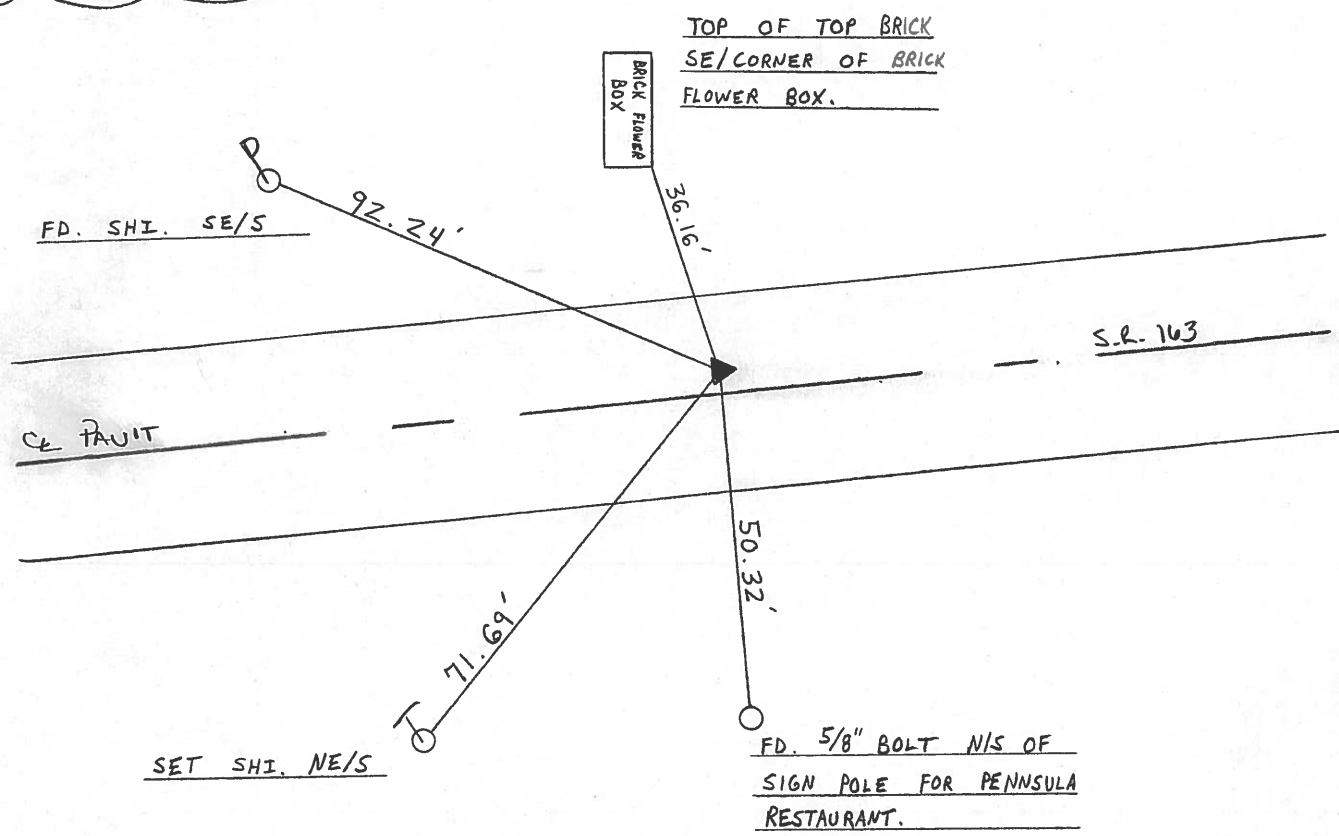
LEFT - CL PAVT. - RIGHT 2.8' LT. &

8.9' TO LT. EDGE PAVEMENT

S.L.M. 1737 + 14



1983 $\Delta = 04^{\circ}42'$ Lt. (PAV)
 334 + 08.23
 SET P.K. & WASHER ATOP
 PK & WASHER 3' LT. & PAVT



County Ottawa S.R. #163

Date 11/21/83

Township Danbury

Weather sunny - windy

Section

Temp. 50°

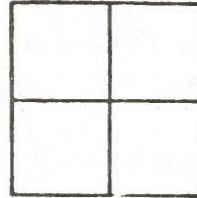
T-N, R-E

Personnel Cronin

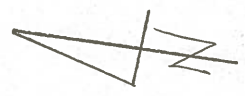
Ripple

Geyman

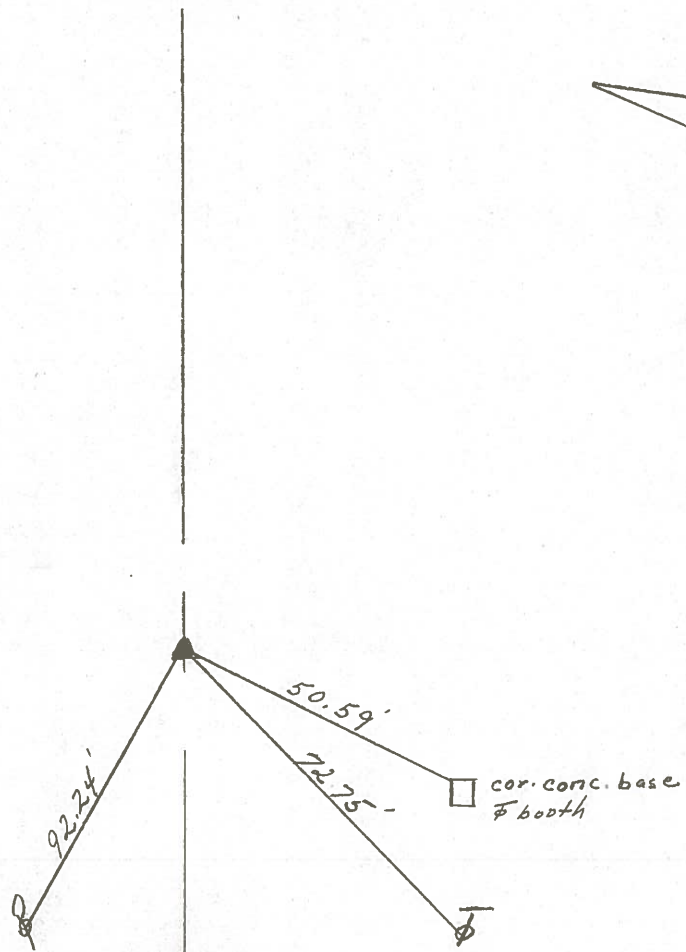
Barbour



134A



Plan
P.I. $\Delta = 04^{\circ}42' R$
334+08.23
Set P.K. & washer atop
P.K. & washer 3' Lt. & Paint



Q.S.R. #163

PERSONNEL	TITLE	PERSONNEL	TITLE	COUNTY	DATE
Schneider		Patts		Ottawa	9-5-68
Mosser				S. R. 163	WEATHER Fair
Barbour				SEC. S.R.#269 - East	TEMP. 80°
Redding					
DESCRIPTION	Ties for Control Points				JOB NO.

LEFT	CENTER LINE	RIGHT
<p>P.I. 334+08.23 P.K. Nail on surface</p> <p>6371</p> <p>134A</p>	<p>28" Maple</p> <p>97.37</p> <p>18" Cottonwood 83.70</p> <p>92.22</p>	<p>Restaurant 2nd brick</p> <p>91.03</p> <p>76.75</p> <p>to cable pole</p>
<p>P.I. 315+27.53 P.K. Nail on surface All dist. Plumbed</p> <p>6370</p> <p>134</p>	<p>Bress Pole</p> <p>53.74</p> <p>46.82</p>	<p>46.08 to Cable pole</p> <p>19.60 to Church Rd. sign</p>
<p>P.I. 306+27.45 off Pavmt Iron Pin</p> <p>6369</p> <p>133C</p>	<p>76.29</p> <p>48.12</p> <p>plumbed</p> <p>14.28</p> <p>N.W. Cor. C.B.</p>	<p>33.08 to Cable pole</p> <p>N.E. Cor. C.B.</p>
<p>P.I. 294+03.70 P.K. Nail on surface</p> <p>6368</p> <p>133B</p>	<p>122.32</p> <p>99.34</p>	<p>77.62</p>
<p>P.I. small R.P. spk</p> <p>6367</p> <p>133A</p>	<p>75.97</p>	<p>76.35</p> <p>64.56 to 10" Cherry</p> <p>103.32</p>