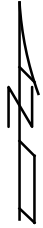
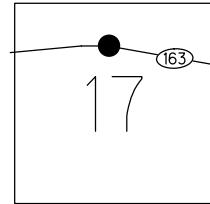


O.D.O.T. DISTRICT 2 SURVEY OFFICE (USE ONLY)

PERSONNEL \_\_\_\_\_ REFERENCE NO. 135 A SHEET 16 OF 66  
 NOTES LUMBREZER DATE 5/6/11 ROUTE SR 163  
 H.C. FINTEL WEATHER CLOUDY COUNTY OTTAWA  
 R.C. LUMBREZER TEMP. 60° TOWNSHIP DANBURY  
 DWG BY NIESE PID 107060 SECTION 2-17

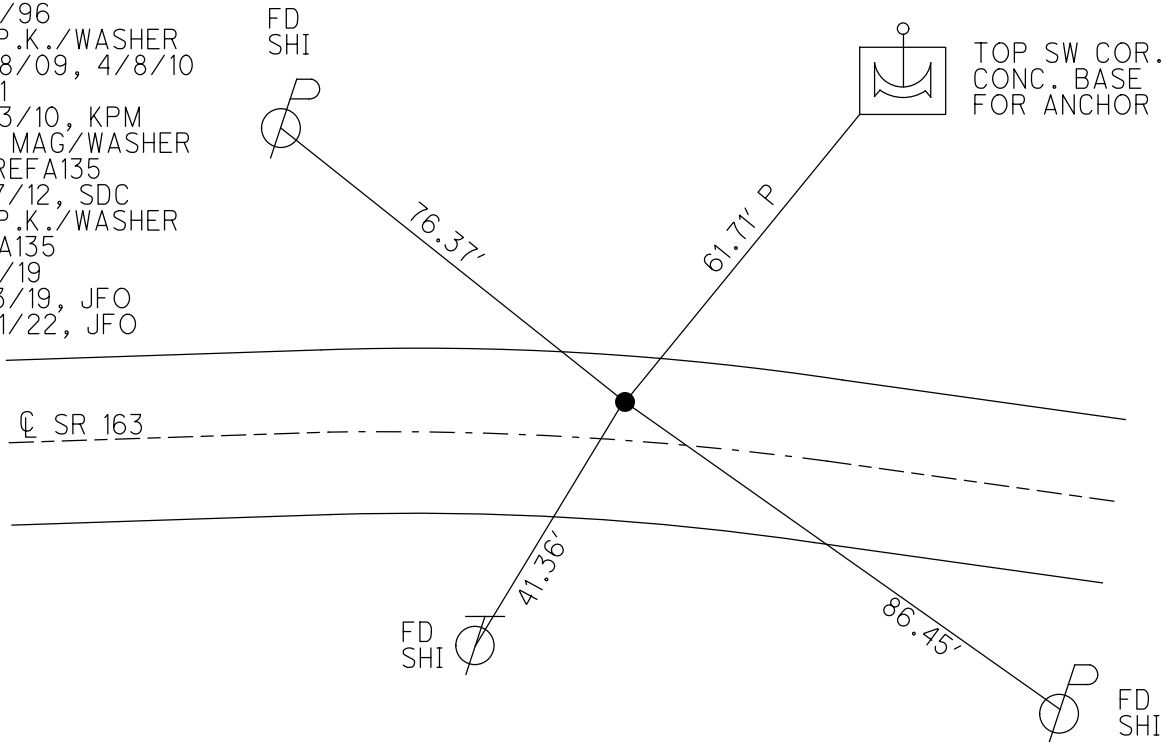
TYPE MONUMENT P.K./WASHER  
 ON SURFACE - ~~BELOW~~ ON \_\_\_\_\_  
 OFFSET  $\text{C}$  PAVEMENT 5.4' LT : ~~RT~~  
6.0' TO LT EDGE PAVEMENT  
 STATION: 1765+58

NOTE:  
THIS MAP IS FOR ODOT PURPOSES ONLY.  
TO INDEX REFERENCE TIES, AND DOES NOT  
REPRESENT TRUE LAND SUBDIVISION.



HORZ. DATUM: NAD83(2011) GEOID: 2012A  
 GRID: NORTHING: 679718.894 EASTING: 1888853.881

RECORD: P.I.  
 $\Delta = 08^{\circ}01' \text{ RT}$   
 STA. 362+40.06  
 1983 PLAN  
 SET P.K./WASHER  
 ATOP P.K.NAIL  
 SET P.K./WASHER  
 6/5/96  
 FD P.K./WASHER  
 9/28/09, 4/8/10  
 SV111  
 4/23/10, KPM  
 SET MAG/WASHER  
 FINREFA135  
 9/17/12, SDC  
 FD P.K./WASHER  
 REFA135  
 4/2/19  
 9/13/19, JFO  
 4/21/22, JFO

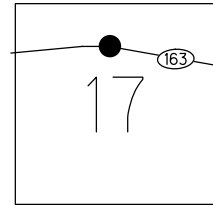


O.D.O.T. DISTRICT 2 SURVEY OFFICE (USE ONLY)

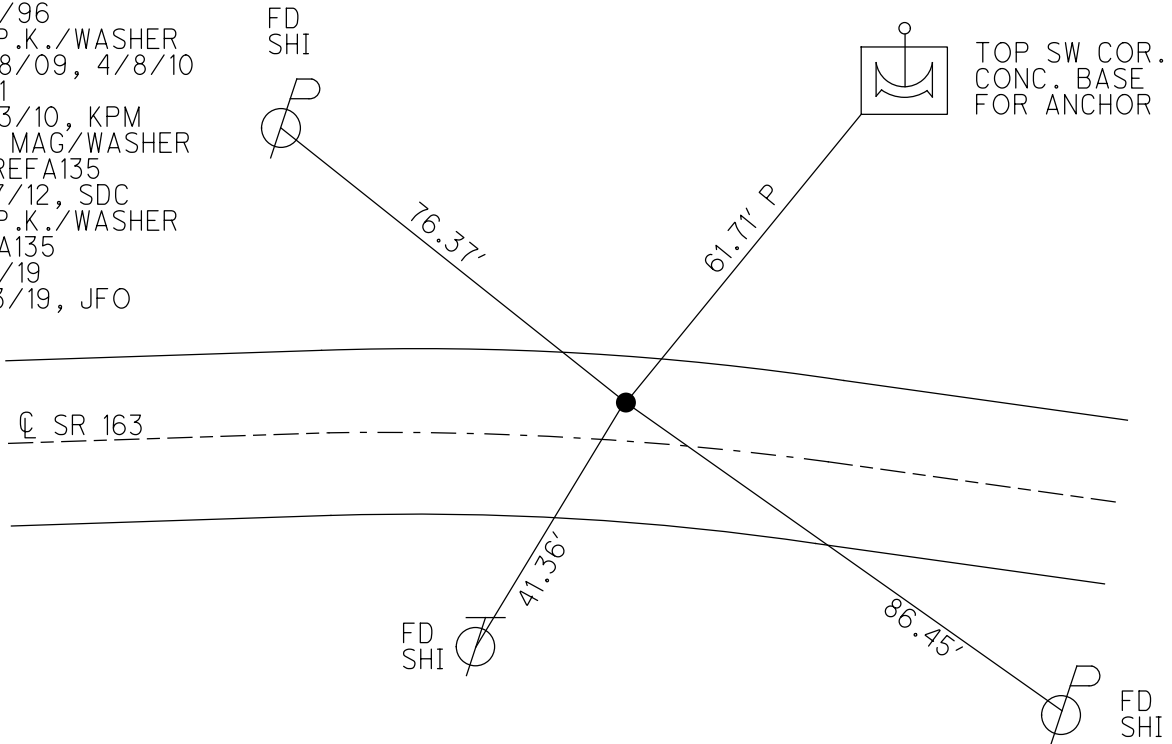
PERSONNEL \_\_\_\_\_ REFERENCE NO. 135 A SHEET 16 OF 63  
 NOTES LUMBREZER DATE 5/6/11 ROUTE SR 163  
 H.C. FINTEL WEATHER CLOUDY COUNTY OTTAWA  
 R.C. LUMBREZER TEMP. 60° TOWNSHIP DANBURY  
 SECTION 2-17  
 DWG BY NIESE PID 107060

TYPE MONUMENT P.K./WASHER  
 ON SURFACE - ~~BELOW~~ ON \_\_\_\_\_  
 OFFSET  $\varnothing$  PAVEMENT 5.4' LT : ~~RT~~  
6.0' TO LT EDGE PAVEMENT  
 STATION: 1765+58  
 HORZ.DATUM: NAD83(2011) GEOID: 2012A  
 GRID: NORTHING: 679718.894 EASTING: 1888853.881

NOTE:  
 THIS MAP IS FOR ODOT PURPOSES ONLY  
 TO INDEX REFERENCE TIES, AND DOES NOT  
 REPRESENT TRUE LAND SUBDIVISION.



RECORD: P.I.  
 $\Delta = 08^{\circ}01' RT$   
 STA. 362+40.06  
 1983 PLAN  
 SET P.K./WASHER  
 ATOP P.K.NAIL  
 SET P.K./WASHER  
 6/5/96  
 FD P.K./WASHER  
 9/28/09, 4/8/10  
 SV111  
 4/23/10, KPM  
 SET MAG/WASHER  
 FINREFA135  
 9/17/12, SDC  
 FD P.K./WASHER  
 REFA135  
 4/2/19  
 9/13/19, JFO



O.D.O.T. DISTRICT 2 SURVEY OFFICE (USE ONLY)

PERSONNEL

REFERENCE NO. 135 A

SHEET 16 OF 63

NOTES LUMBREZER

DATE 5/6/11

ROUTE SR 163

H.C. FINTEL

WEATHER CLOUDY

COUNTY OTTAWA

R.C. LUMBREZER

TEMP. 60°

TOWNSHIP DANBURY

SECTION 2-17

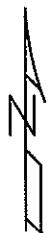
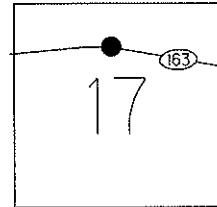
TYPE MONUMENT P.K./WASHER

ON SURFACE - ~~BELOW~~ ON

LEFT - ℄ PAV'T - ~~RIGHT~~ 5.4'

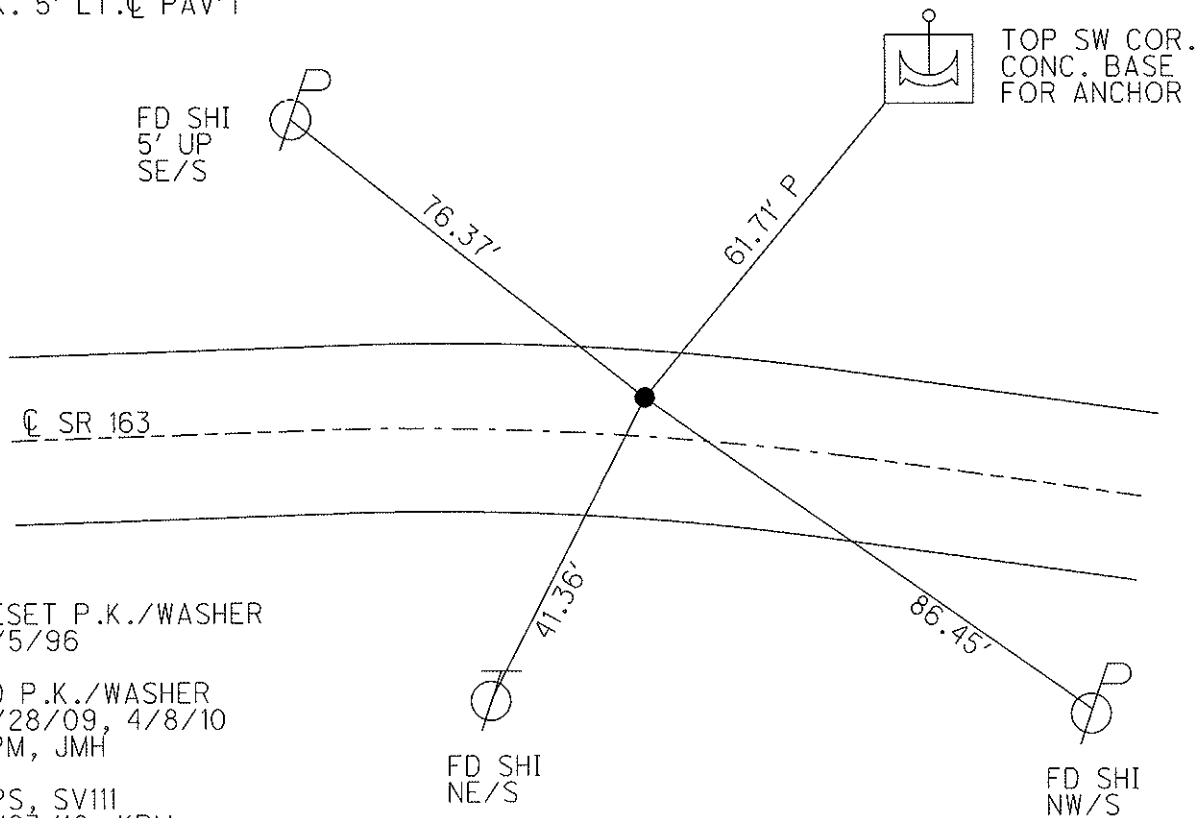
6' TO LT EDGE PAVEMENT

S.L.M. 1765+58



Grid: Northing: 679718.879 Easting: 1888853.796

1983 RECORD  
 P.I.  $\Delta = 08^\circ 01'$  RT. (PLAN)  
 362+40.06  
 SET P.K./WASHER ATOP  
 P.K. 5' LT. ℄ PAV'T



RESET P.K./WASHER  
 6/5/96

FD P.K./WASHER  
 9/28/09, 4/8/10  
 KPM, JMH

GPS, SV111  
 4/23/10, KPM

SET MAG/WASHER  
 9/13/12, SDC

GPS, FINREFA135  
 9/17/12, SDC

# O.D.O.T. DISTRICT 2 SURVEY OFFICE

PERSONNEL

REFERENCE NO. 135A

SHEET 11 OF 52

NOTES CANTERBURY

H.C. LOEHRKE

R.C. ROUSOS

DATE 5-18-95

WEATHER CLOUDY

TEMP. +60° F

ROUTE 163

COUNTY OTTAWA

TOWNSHIP DANBURY

SECTION CONN. WEST. RESERVE

T \_\_\_ R \_\_\_

Reset 6-5-96

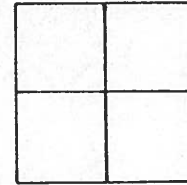
TYPE MONUMENT PK NAIL / WASHER

ON SURFACE - BELOW ON SURFACE

LEFT - ☒ PAV'T. - RIGHT 5.0' LT ☒

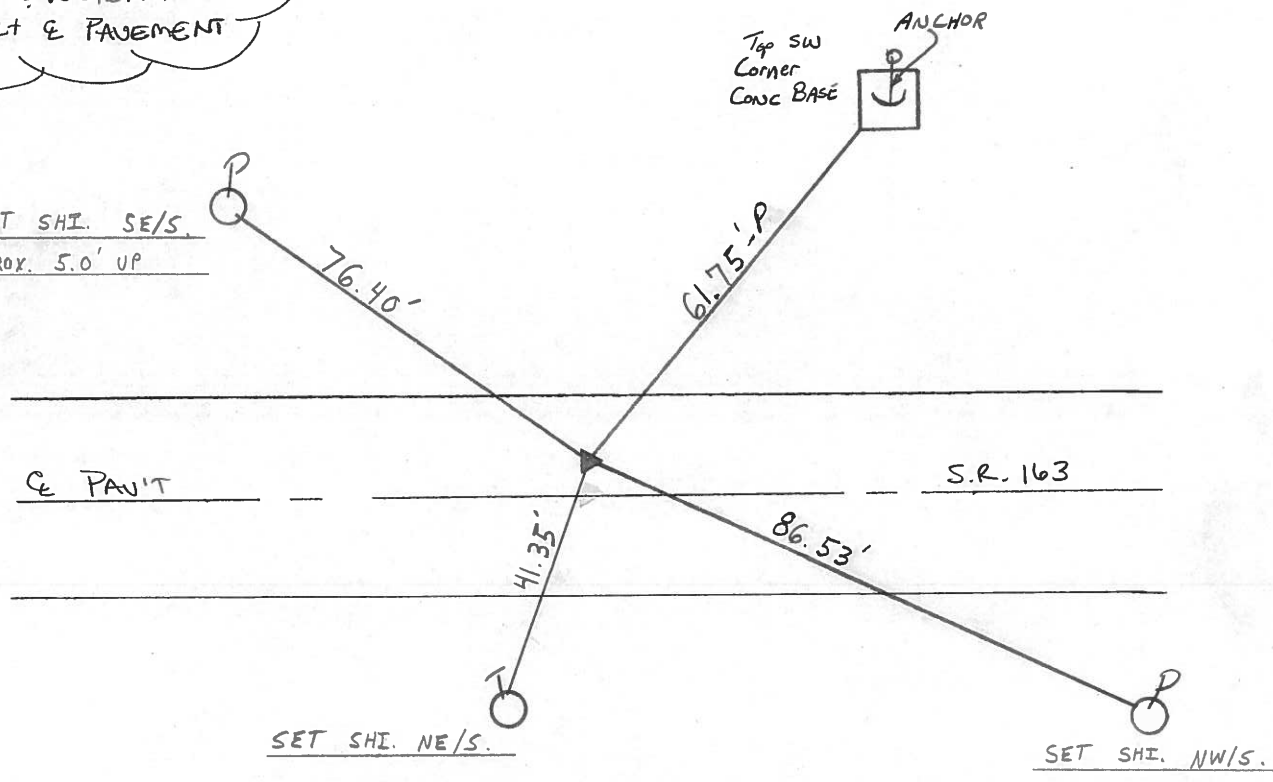
6.7' TO LT EDGE PAVEMENT

S.L.M. 1765 + 58



1983 RECORD  
 P.I.  $\Delta = 08^{\circ} 01' - 00''$  RT. (PIA)  
 362 + 40.06  
 SET PK & WASHER ATOP  
 PK 5' LT ☒ PAVEMENT

SET SHI. SE/S.  
 APPROX. 5.0' UP



County Ottawa S.R. #163

Date 11/21/83

Township Danbury

Weather sunny-windy

Section \_\_\_\_\_

Temp. 50°

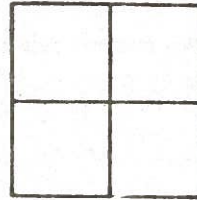
T-N, R-E

Personnel Cronin

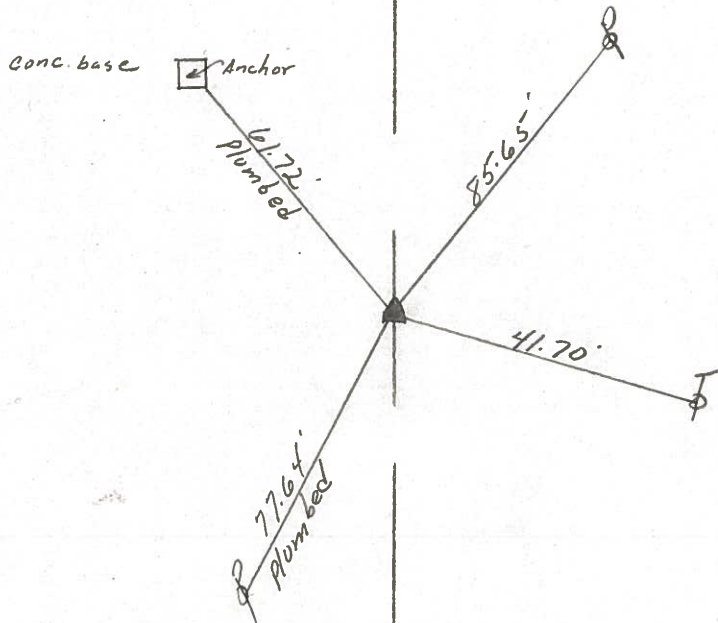
Ripple

Geyman

Barbour



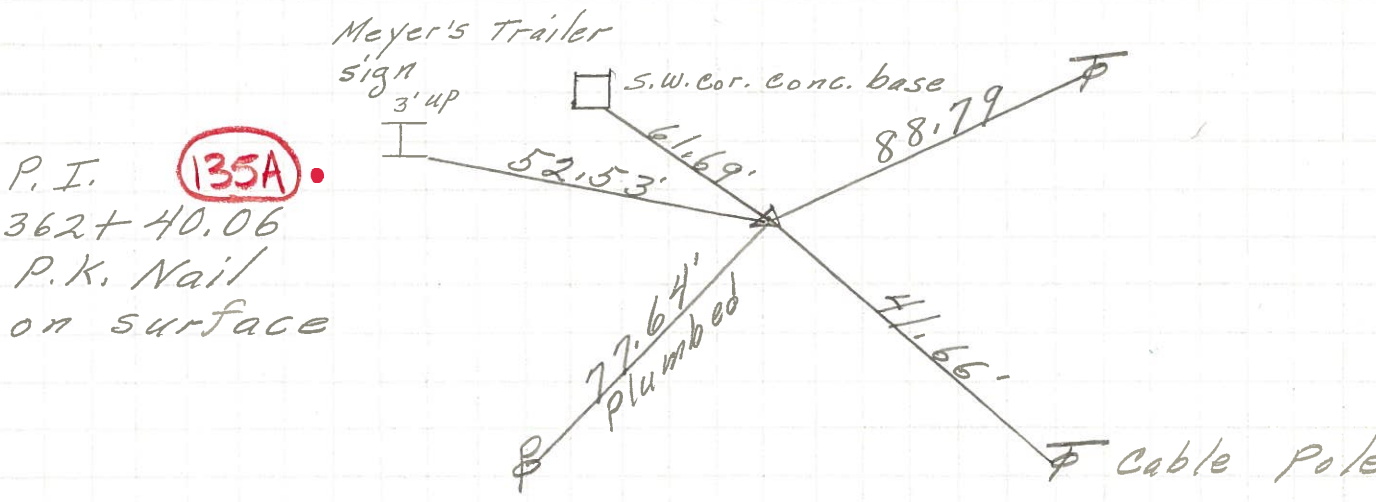
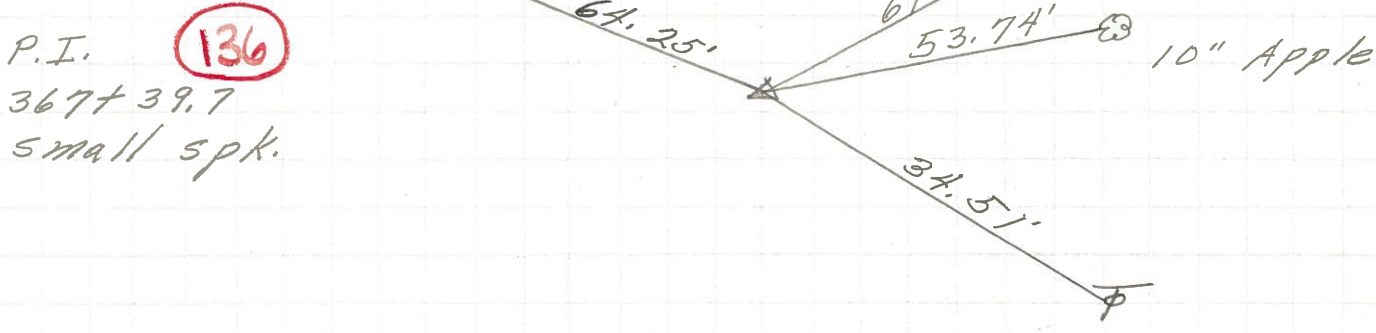
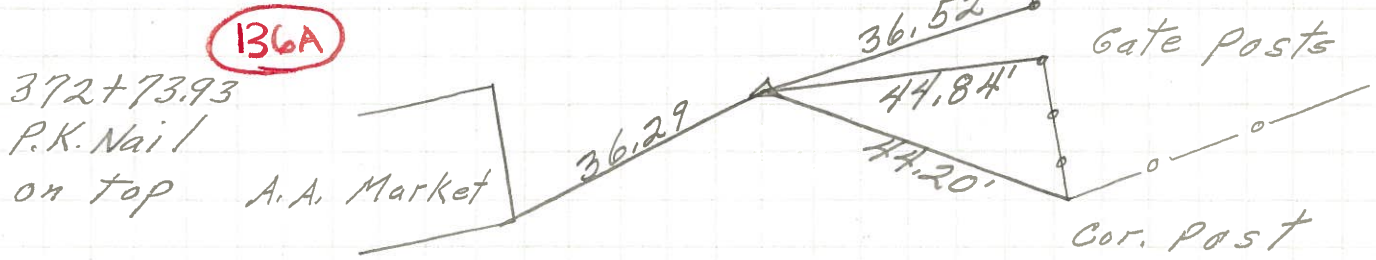
135 A



Plan  
P.I.  $\Delta = 08^{\circ} 01' \text{ Rt.}$   
362 + 40.06  
set P.K. & washer atop P.K.  
5' Lt. & Pavement

S.R. #163

PERSONNEL	TITLE	PERSONNEL	TITLE
COUNTY <u>Ottawa</u> DATE <u>6-9-71</u>			
S. R. <u>163</u> WEATHER _____			
SEC. <u>2</u> TEMP. _____			
DESCRIPTION <u>S.R. #269 East</u> JOB NO. _____			
	LEFT	CENTER LINE	RIGHT





PERSONNEL	TITLE	PERSONNEL	TITLE	COUNTY	DATE
<u>Schneider</u>		<u>Potts</u>		<u>Ottawa</u>	<u>9-10-68</u>
<u>Mosser</u>				S. R. <u>163</u>	WEATHER <u>Cloudy</u>
<u>Barbour</u>				SEC. <u>S.R. #269 - East</u>	TEMP. <u>70°</u>
<u>Redding</u>					
DESCRIPTION	<u>Ties for Control Points</u>				JOB NO.

