

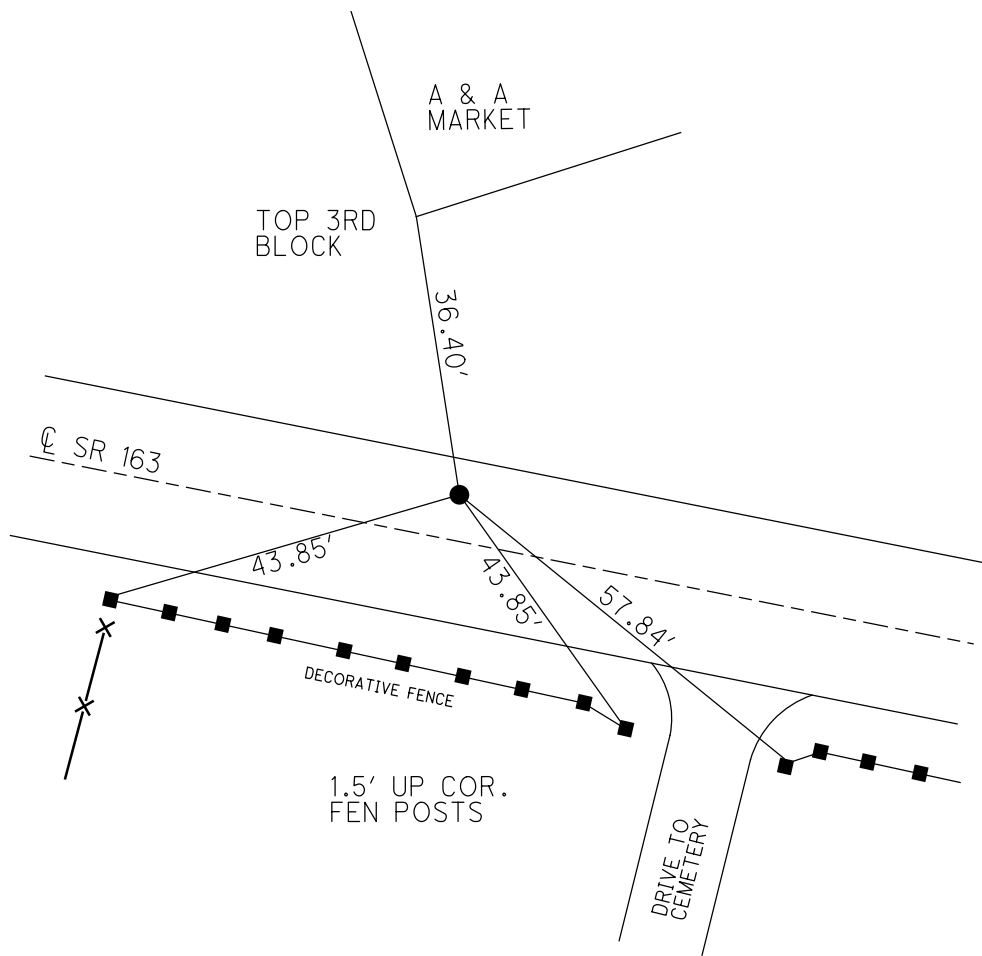
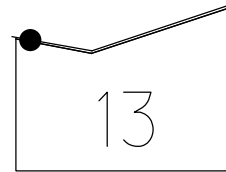
O.D.O.T. DISTRICT 2 SURVEY OFFICE (USE ONLY)

PERSONNEL _____ REFERENCE NO. 136 A SHEET 18 OF 67
 NOTES LUMBREZER DATE 5/6/11 ROUTE SR 163
 H.C. FINTEL WEATHER CLOUDY COUNTY OTTAWA
 R.C. LUMBREZER TEMP. 60° TOWNSHIP DANBURY
 DWG BY NIESE PID 109637 SECTION 2-13

TYPE MONUMENT P.K./WASHER
 ON SURFACE - ~~BELOW~~ ON
 OFFSET \varnothing PAVEMENT 6.6' LT : ~~RT~~
5.1' TO LT EDGE PAVEMENT
 STATION: 1775+94

HORZ.DATUM: NAD83(2011) GEOID: 2012B
 GRID: NORTHING: 679529.820 EASTING: 1889869.779

NOTE:
 THIS MAP IS FOR ODOT PURPOSES ONLY
 TO INDEX REFERENCE TIES, AND DOES NOT
 REPRESENT TRUE LAND SUBDIVISION.



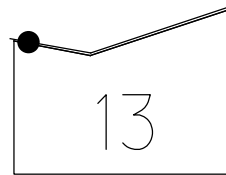
RECORD: P.I.
 $\Delta = 05^{\circ}28' RT$
 STA. 372+73.93
 1983 PLAN
 SET P.K./WASHER
 ATOP P.K./WASHER
 SET P.K./WASHER
 6/5/96
 FD P.K./WASHER
 9/28/09, 4/8/10
 SV113
 4/28/10, KPM
 FD OLD NAIL/SHI
 SET P.K.NAIL
 5/6/11, RJL
 SET MAG/WASHER
 FINREFA136
 9/17/12, SDC
 FD MAG/WASHER
 REFA136
 4/2/19
 9/13/19, JFO
 4/21/22, JFO
 FD P.K./WASHER
 REFA136
 8-9-22, DSA

O.D.O.T. DISTRICT 2 SURVEY OFFICE (USE ONLY)

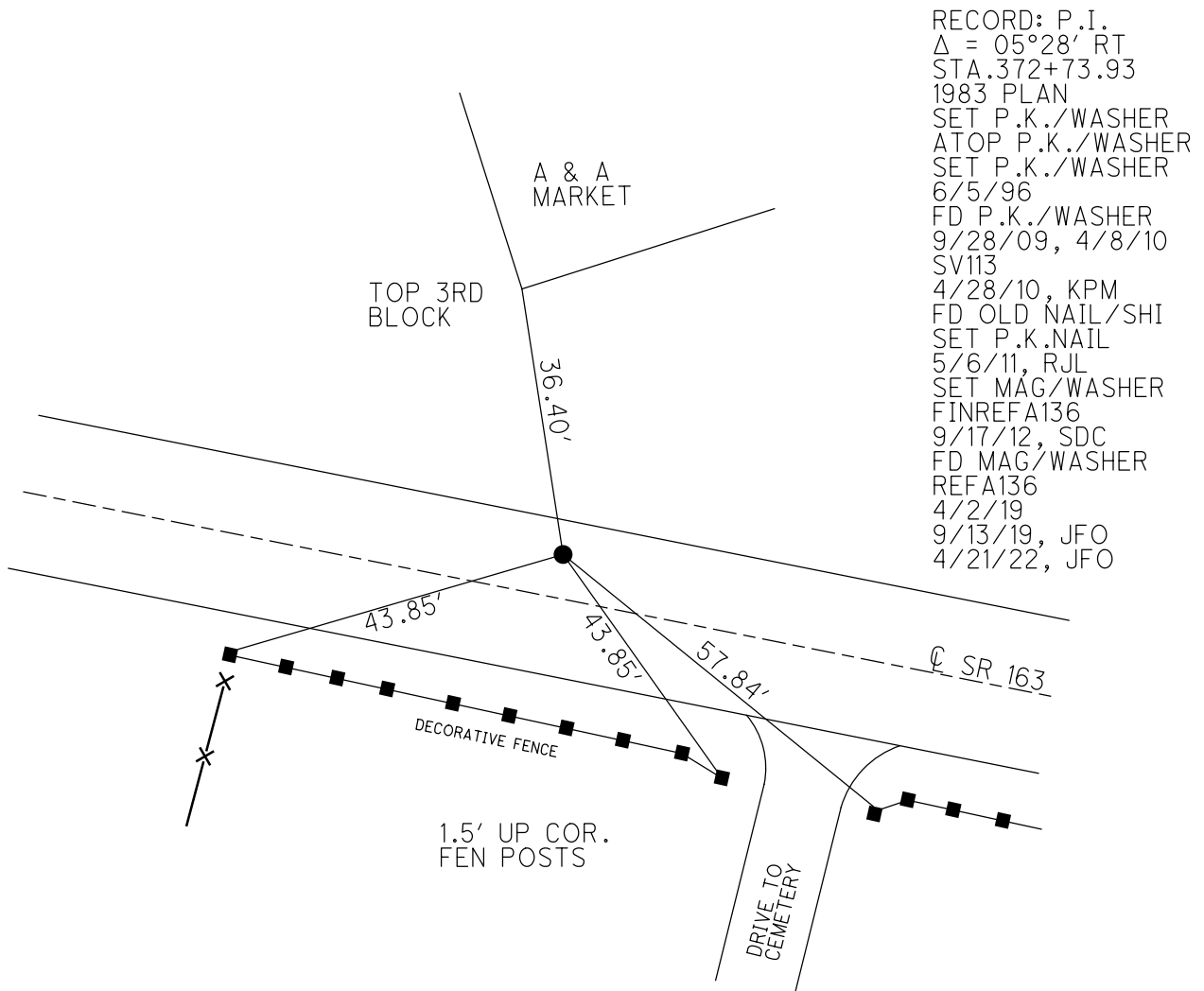
PERSONNEL _____ REFERENCE NO. 136 A SHEET 18 OF 66
 NOTES LUMBREZER DATE 5/6/11 ROUTE SR 163
 H.C. FINTEL WEATHER CLOUDY COUNTY OTTAWA
 R.C. LUMBREZER TEMP. 60° TOWNSHIP DANBURY
 DWG BY NIESE PID 107060 SECTION 2-13

TYPE MONUMENT P.K./WASHER
 ON SURFACE - ~~BELOW~~ ON
 OFFSET Q PAVEMENT 6.6' LT : RT
5.1' TO LT EDGE PAVEMENT
 STATION: 1775+94

NOTE:
THIS MAP IS FOR ODOT PURPOSES ONLY.
TO INDEX REFERENCE TIES, AND DOES NOT
REPRESENT TRUE LAND SUBDIVISION.



HORZ. DATUM: NAD83(2011) GEOID: 2012A
 GRID: NORTHING: 679529.803 EASTING: 1889869.785

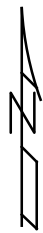
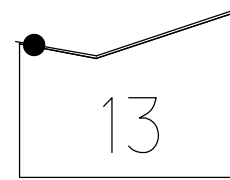


O.D.O.T. DISTRICT 2 SURVEY OFFICE (USE ONLY)

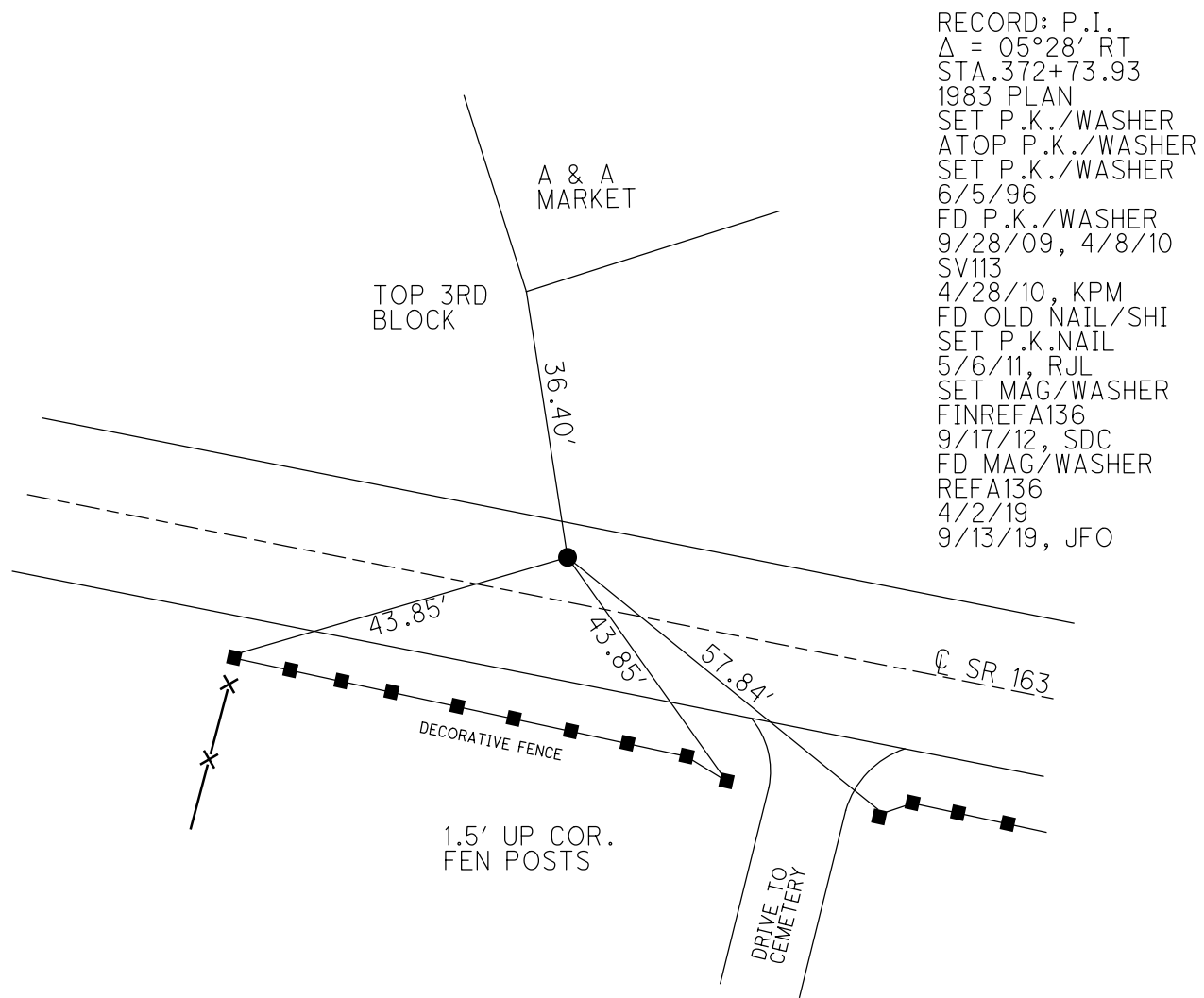
PERSONNEL _____ REFERENCE NO. 136 A SHEET 18 OF 63
 NOTES LUMBREZER DATE 5/6/11 ROUTE SR 163
 H.C. FINTEL WEATHER CLOUDY COUNTY OTTAWA
 R.C. LUMBREZER TEMP. 60° TOWNSHIP DANBURY
 SECTION 2-13
 DWG BY NIESE PID 107060

TYPE MONUMENT P.K./WASHER
 ON SURFACE - ~~BELOW~~ ON
 OFFSET ☐ PAVEMENT 6.6' LT : RT
5.1' TO LT EDGE PAVEMENT
 STATION: 1775+94

NOTE:
THIS MAP IS FOR ODOT PURPOSES ONLY
TO INDEX REFERENCE TIES, AND DOES NOT
REPRESENT TRUE LAND SUBDIVISION.



HORIZ.DATUM: NAD83(2011) GEOID: 2012A
 GRID: NORTHING: 679529.803 EASTING: 1889869.785



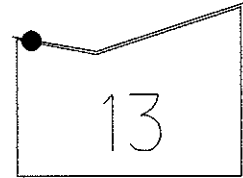
RECORD: P.I.
 $\Delta = 05^{\circ}28' RT$
 STA. 372+73.93
 1983 PLAN
 SET P.K./WASHER
 ATOP P.K./WASHER
 SET P.K./WASHER
 6/5/96
 FD P.K./WASHER
 9/28/09, 4/8/10
 SV113
 4/28/10, KPM
 FD OLD NAIL/SHI
 SET P.K.NAIL
 5/6/11, RJL
 SET MAG/WASHER
 FINREF A136
 9/17/12, SDC
 FD MAG/WASHER
 REFA136
 4/2/19
 9/13/19, JFO

O.D.O.T. DISTRICT 2 SURVEY OFFICE (USE ONLY)

PERSONNEL	REFERENCE NO. <u>136 A</u>	SHEET <u>18</u> OF <u>63</u>
NOTES <u>LUMBREZER</u>	DATE <u>5/6/11</u>	ROUTE <u>SR 163</u>
H.C. <u>FINTEL</u>	WEATHER <u>CLOUDY</u>	COUNTY <u>OTTAWA</u>
R.C. <u>LUMBREZER</u>	TEMP. <u>60°</u>	TOWNSHIP <u>DANBURY</u>
		SECTION <u>2-13</u>

TYPE MONUMENT P.K./WASHER
 ON SURFACE - ~~BELOW~~ ON
 LEFT - CL PAV'T - ~~RIGHT~~ 6.6'
5.1' TO LT EDGE PAVEMENT
 S.L.M. 1775+94

Grid: Northing: 679529.791 Easting: 1889869.748



1983 RECORD
 P.I. $\Delta = 05^\circ 28'$ RT. (PLAN)
 372+73.93
 SET P.K./WASHER ATOP
 P.K./WASHER
 6.5' LT. CL PAV'T

RESET P.K./WASHER
 6/5/96

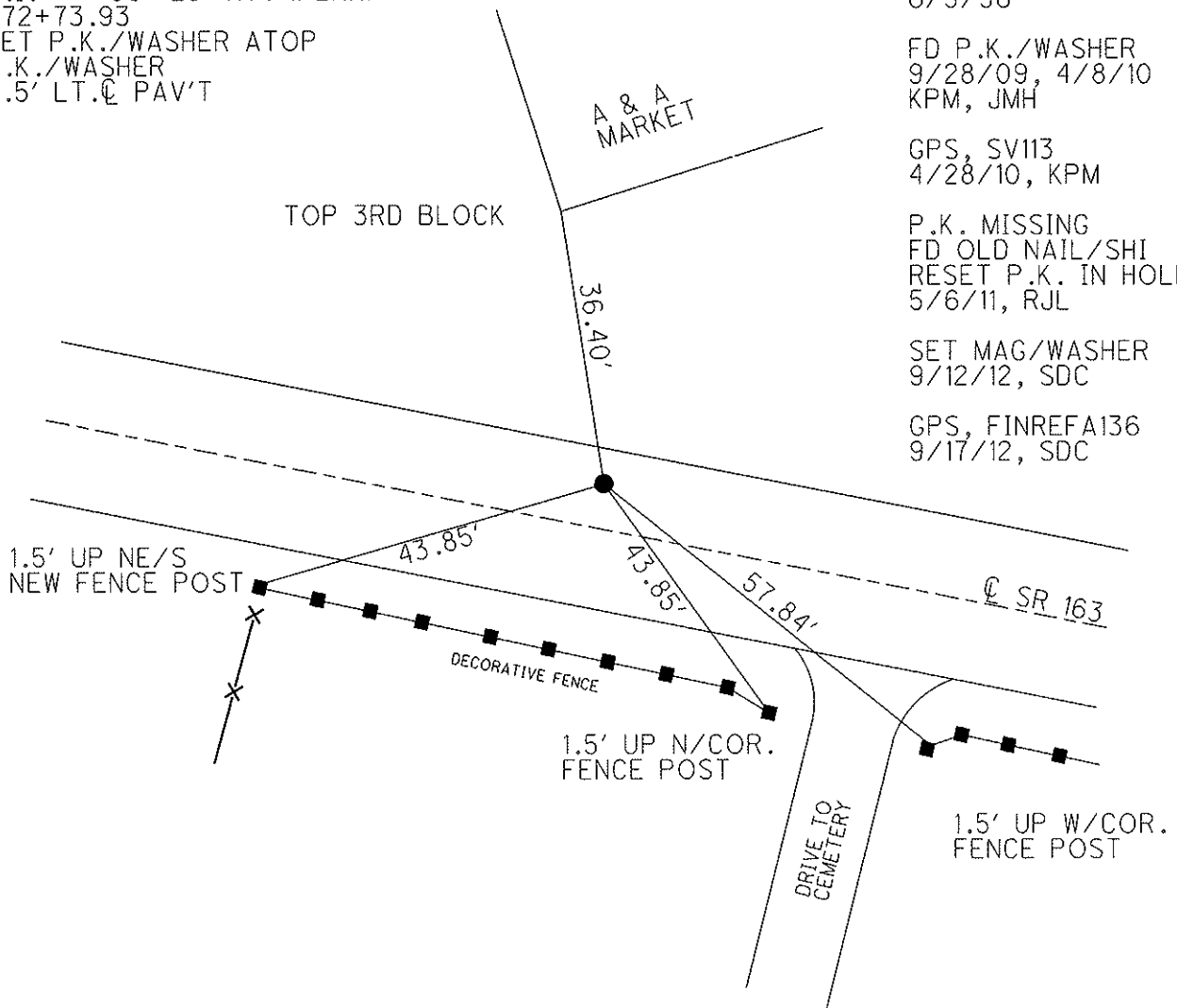
FD P.K./WASHER
 9/28/09, 4/8/10
 KPM, JMH

GPS, SV113
 4/28/10, KPM

P.K. MISSING
 FD OLD NAIL/SHI
 RESET P.K. IN HOLE
 5/6/11, RJL

SET MAG/WASHER
 9/12/12, SDC

GPS, FINREFA136
 9/17/12, SDC



O.D.O.T. DISTRICT 2 SURVEY OFFICE

PERSONNEL

REFERENCE NO. 136A

SHEET 13 OF 52

NOTES CANTERBURY

H.C. LOEHRKE

R.G. ROUSOS

DATE 5-25-95

WEATHER CLOUDY

TEMP. ± 56° F

ROUTE S.R. 163

COUNTY OTTAWA

TOWNSHIP CANTERBURY

SECTION CONV. WEST. RESERVE

T R

Reset

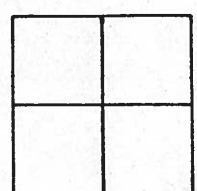
TYPE MONUMENT PK NAIL / WASHER 6-5-96

ON SURFACE - BELOW ON SURFACE

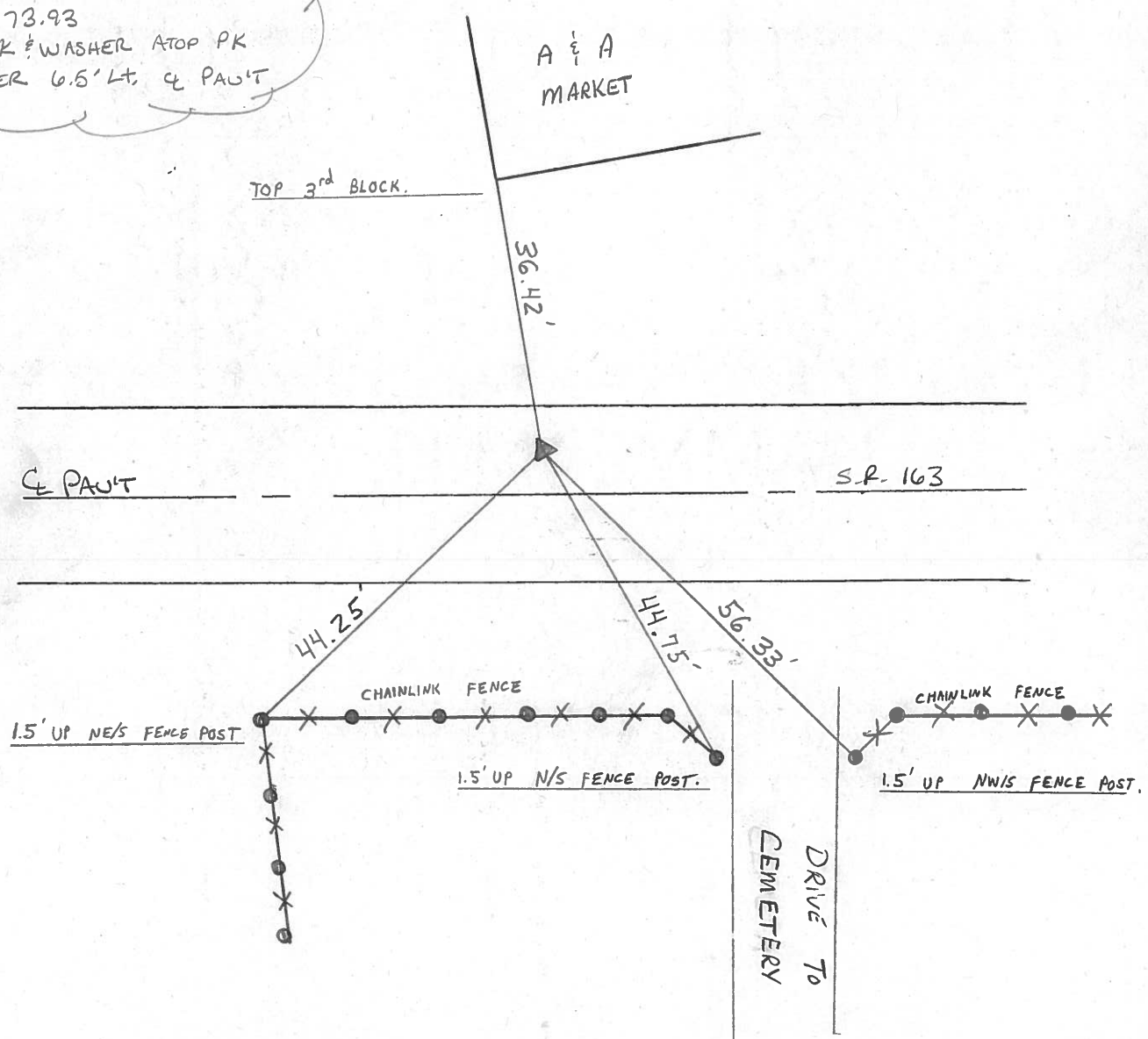
LEFT - CL PAV'T. - RIGHT 6.6' LT CL

5.1 TO LT EDGE PAVEMENT

S.L.M. 1775 + 94



1983. RECORD
 P1. Δ = 05° - 28' - 00" RT (PLAN)
 372 + 73.93
 SET PK & WASHER ATOP PK
 & WASHER 6.5' LT. CL PAV'T



ODOT. DISTRICT 2 SURVEY OFFICE

SHEET 12 OF

County Ottawa S.R. # 163

Date 11/21/03

Township Danbury

Weather sunny-windy

Section _____

Temp. 53°

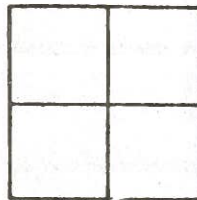
T-N, R-E

Personnel Cronin

Ripple

Geyman

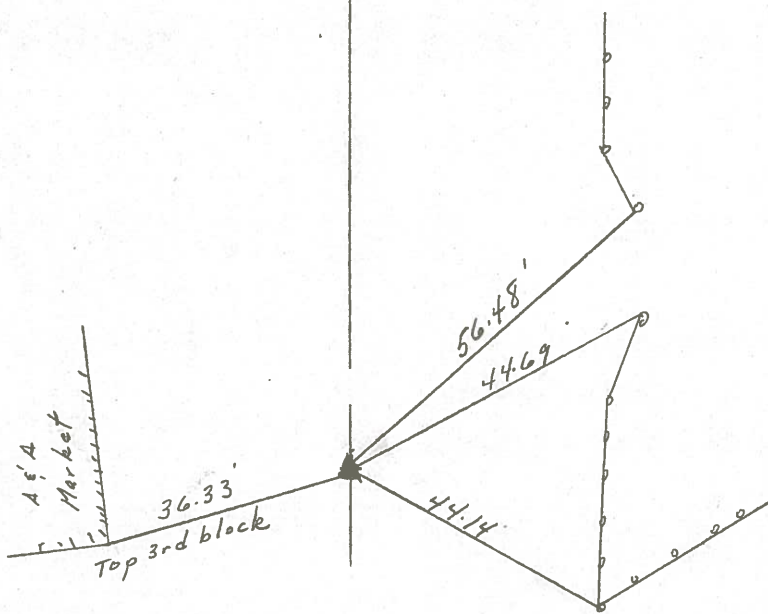
Barbour



136A



Plan
P.I. $\Delta = 05^\circ 28' R$
372+73.93
set P.K. washer at top P.K.
washer 6.5 Lt. & Point.

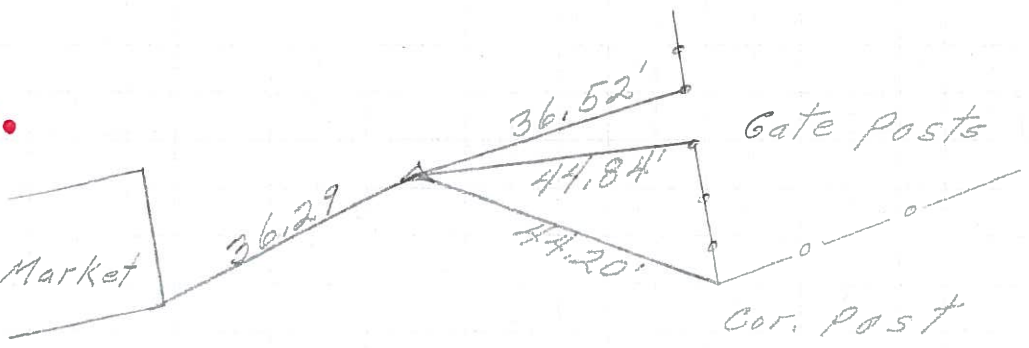


S.R. # 163 B

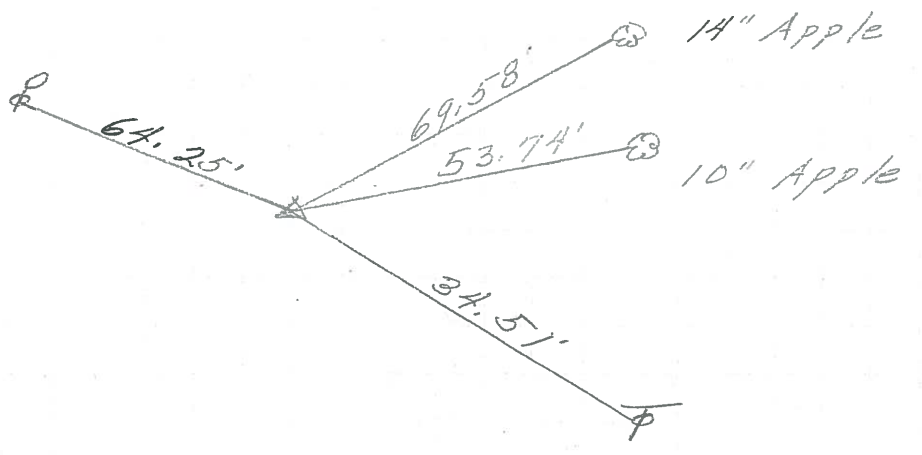
PERSONNEL	TITLE	PERSONNEL	TITLE
COUNTY <u>Ottawa</u> DATE <u>6-9-71</u>			
S. R. <u>163</u> WEATHER _____			
SEC. <u>2</u> TEMP. _____			
DESCRIPTION <u>S.R. #269 East</u>			JOB NO. _____
	LEFT	CENTER LINE	RIGHT

372+73.93
 P.K. Nail
 on top A.A. Market

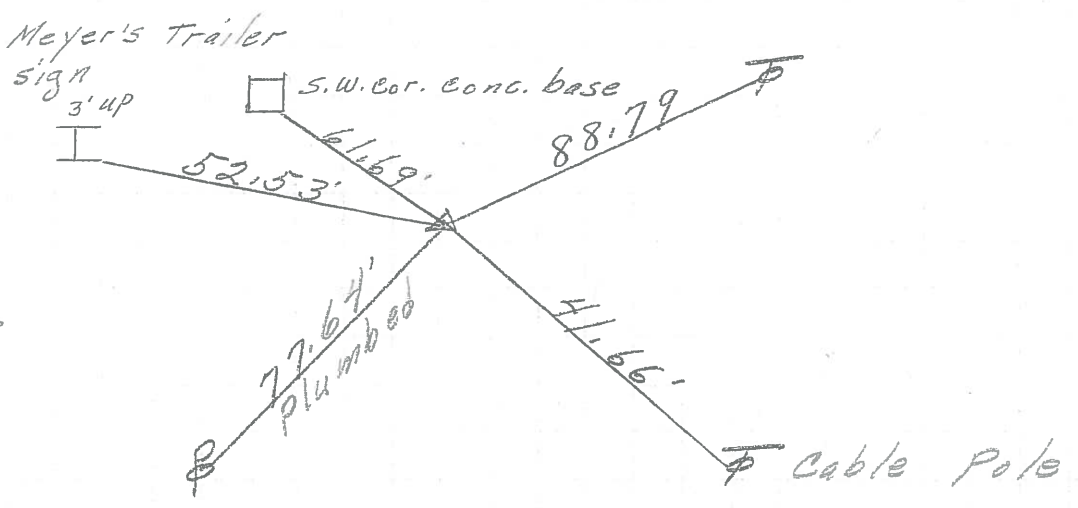
136A



P.I. **136**
 367+39.7
 small spk.



P.I. **135A**
 362+40.06
 P.K. Nail
 on surface



PERSONNEL	TITLE	PERSONNEL	TITLE	COUNTY	DATE
Schneider		Potts		Ottawa	9-10-68
Mosser				S. R. 163	WEATHER Cloudy
Barbour				SEC. S.R. #269 - East	TEMP. 70°
Redding					
DESCRIPTION	Ties for Control Points				JOB NO.

