

O.D.O.T. DISTRICT 2 SURVEY OFFICE (USE ONLY)

PERSONNEL	REFERENCE NO. <u>137</u>	SHEET <u>19</u> OF <u>67</u>
NOTES <u>NIESE</u>	DATE <u>8-17-22</u>	ROUTE <u>SR 163</u>
H.C. <u>AUBLE</u>	WEATHER <u>SUNNY</u>	COUNTY <u>OTTAWA</u>
R.C. <u>RHOADES</u>	TEMP. <u>76°</u>	TOWNSHIP <u>DANBURY</u>
		SECTION <u>2-13</u>

DWG BY NIESE PID 109637

TYPE MONUMENT MONBOX W/ 1" IPIN

ON SURFACE - ~~BELOW~~ ON

OFFSET ☉ PAVEMENT 4.0' LT : RT

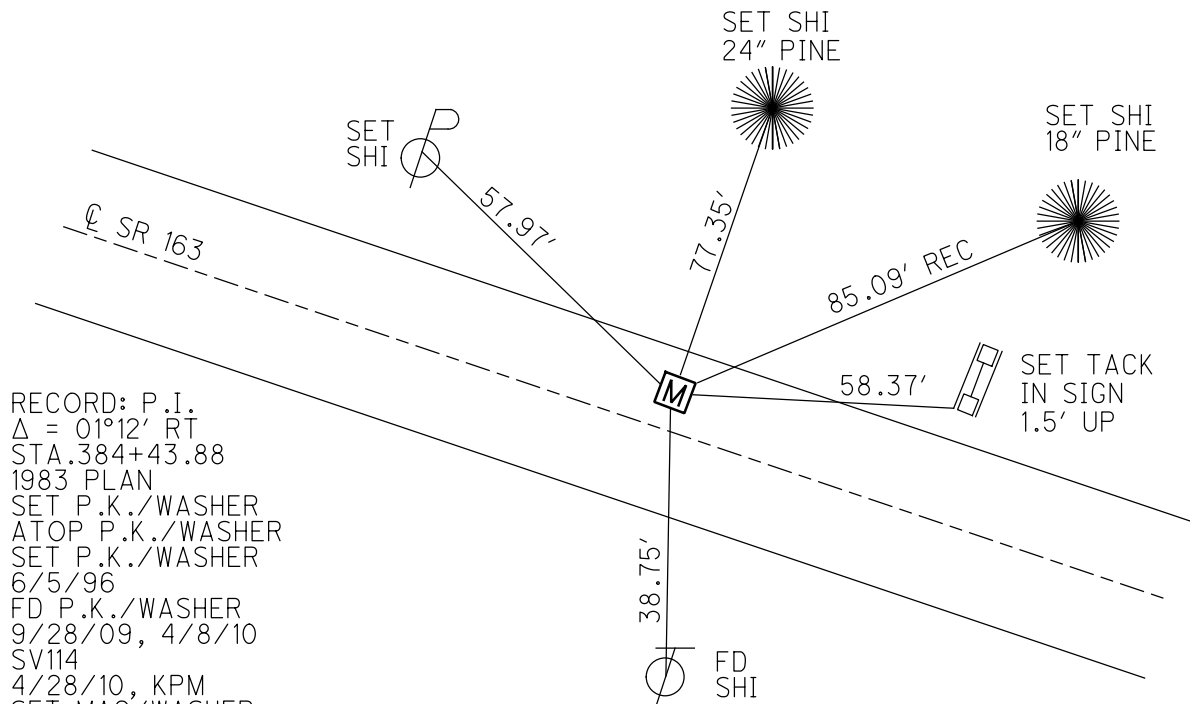
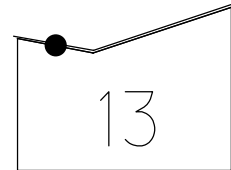
7.5' TO LT EDGE PAVEMENT

STATION: 1787+67

HORZ.DATUM: NAD83(2011) GEOID: 2012B

GRID: NORTHING: 679177.357 EASTING: 1890985.233

NOTE:  
THIS MAP IS FOR ODOT PURPOSES ONLY  
TO INDEX REFERENCE TIES, AND DOES NOT  
REPRESENT TRUE LAND SUBDIVISION.



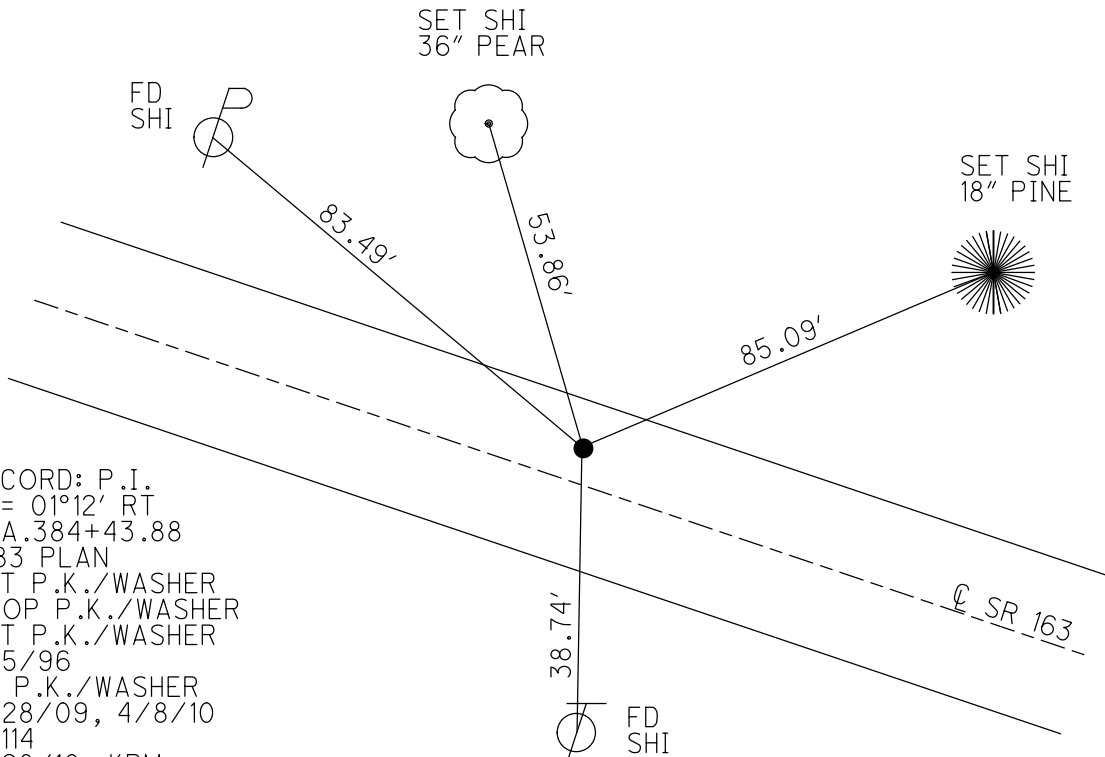
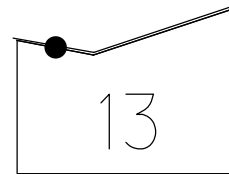
RECORD: P.I.  
 $\Delta = 01^{\circ}12' RT$   
 STA.384+43.88  
 1983 PLAN  
 SET P.K./WASHER  
 ATOP P.K./WASHER  
 SET P.K./WASHER  
 6/5/96  
 FD P.K./WASHER  
 9/28/09, 4/8/10  
 SV114  
 4/28/10, KPM  
 SET MAG/WASHER  
 FINREF137  
 9/17/12, SDC  
 FD P.K./WASHER  
 REF137  
 4/2/19  
 9/13/19, JFO  
 FD P.K./WASHER  
 REF137  
 4/21/22, JFO  
 FD MONBOX  
 W/ 1" IPIN  
 NEWREF137  
 1-31-23, DSA

O.D.O.T. DISTRICT 2 SURVEY OFFICE (USE ONLY)

PERSONNEL \_\_\_\_\_ REFERENCE NO. 137 SHEET 19 OF 66  
 NOTES LUMBREZER DATE 5/6/11 ROUTE SR 163  
 H.C. FINTEL WEATHER CLOUDY COUNTY OTTAWA  
 R.C. LUMBREZER TEMP. 60° TOWNSHIP DANBURY  
 DWG BY NIESE PID 107060 SECTION 2-13

TYPE MONUMENT P.K./WASHER  
 ON SURFACE - ~~BELOW~~ ON \_\_\_\_\_  
 OFFSET  $\odot$  PAVEMENT 4.0' LT : ~~RT~~  
7.5' TO LT EDGE PAVEMENT  
 STATION: 1787+67  
 HORZ.DATUM: NAD83(2011) GEOID: 2012A  
 GRID: NORTHING: 679177.361 EASTING: 1890985.231

NOTE:  
 THIS MAP IS FOR ODOT PURPOSES ONLY  
 TO INDEX REFERENCE TIES, AND DOES NOT  
 REPRESENT TRUE LAND SUBDIVISION.



RECORD: P.I.  
 $\Delta = 01^{\circ}12'$  RT  
 STA.384+43.88  
 1983 PLAN  
 SET P.K./WASHER  
 ATOP P.K./WASHER  
 SET P.K./WASHER  
 6/5/96  
 FD P.K./WASHER  
 9/28/09, 4/8/10  
 SV114  
 4/28/10, KPM  
 SET MAG/WASHER  
 FINREF137  
 9/17/12, SDC  
 FD P.K./WASHER  
 REF137  
 4/2/19  
 9/13/19, JFO  
 4/21/22, JFO

O.D.O.T. DISTRICT 2 SURVEY OFFICE (USE ONLY)

PERSONNEL

REFERENCE NO. 137

SHEET 19 OF 63

NOTES LUMBREZER

DATE 5/6/11

ROUTE SR 163

H.C. FINTEL

WEATHER CLOUDY

COUNTY OTTAWA

R.C. LUMBREZER

TEMP. 60°

TOWNSHIP DANBURY

SECTION 2-13

DWG BY NIESE

PID 107060

TYPE MONUMENT P.K./WASHER

ON SURFACE - ~~BELOW~~ ON

OFFSET  $\varnothing$  PAVEMENT 4.0' LT : ~~RT~~

7.5' TO LT EDGE PAVEMENT

STATION: 1787+67

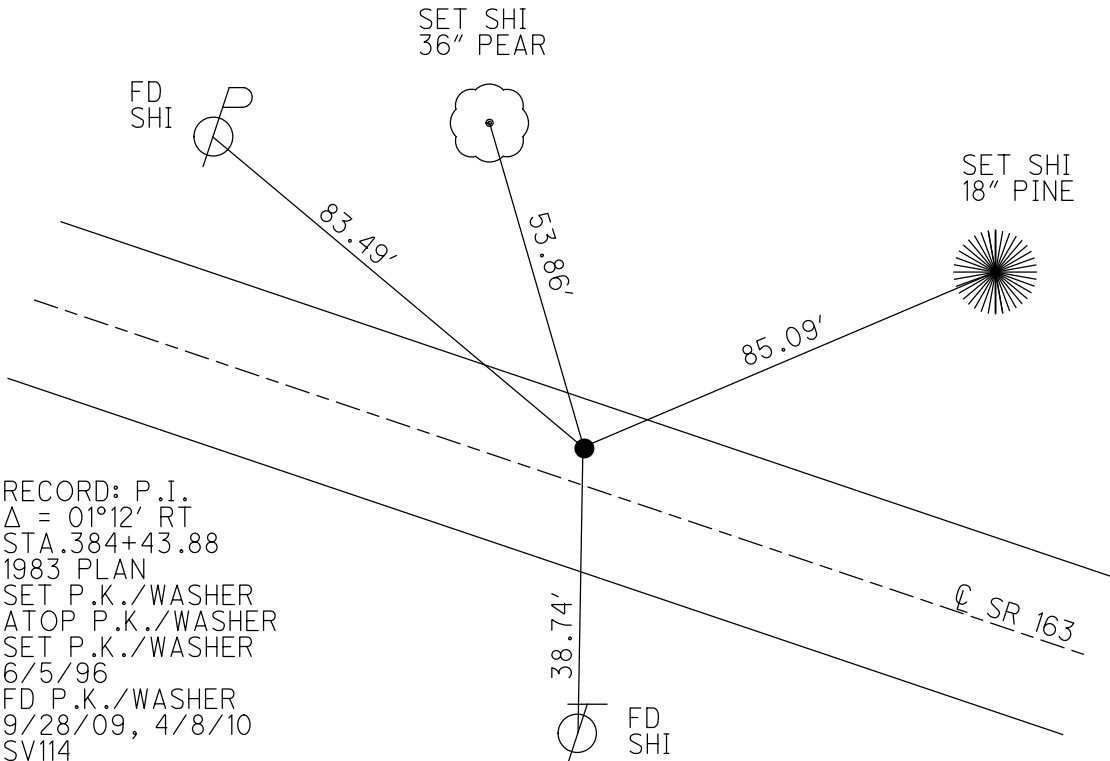
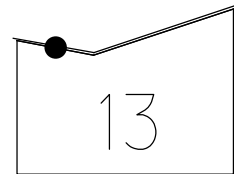
HORZ.DATUM: NAD83(2011)

GEOID: 2012A

GRID: NORTHING: 679177.361

EASTING: 1890985.231

NOTE:  
THIS MAP IS FOR ODOT PURPOSES ONLY.  
TO INDEX REFERENCE TIES, AND DOES NOT  
REPRESENT TRUE LAND SUBDIVISION.

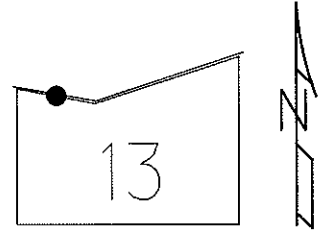


RECORD: P.I.  
 $\Delta = 01^{\circ}12' RT$   
 STA.384+43.88  
 1983 PLAN  
 SET P.K./WASHER  
 ATOP P.K./WASHER  
 SET P.K./WASHER  
 6/5/96  
 FD P.K./WASHER  
 9/28/09, 4/8/10  
 SV114  
 4/28/10, KPM  
 SET MAG/WASHER  
 FINREF137  
 9/17/12, SDC  
 FD P.K./WASHER  
 REF137  
 4/2/19  
 9/13/19, JFO

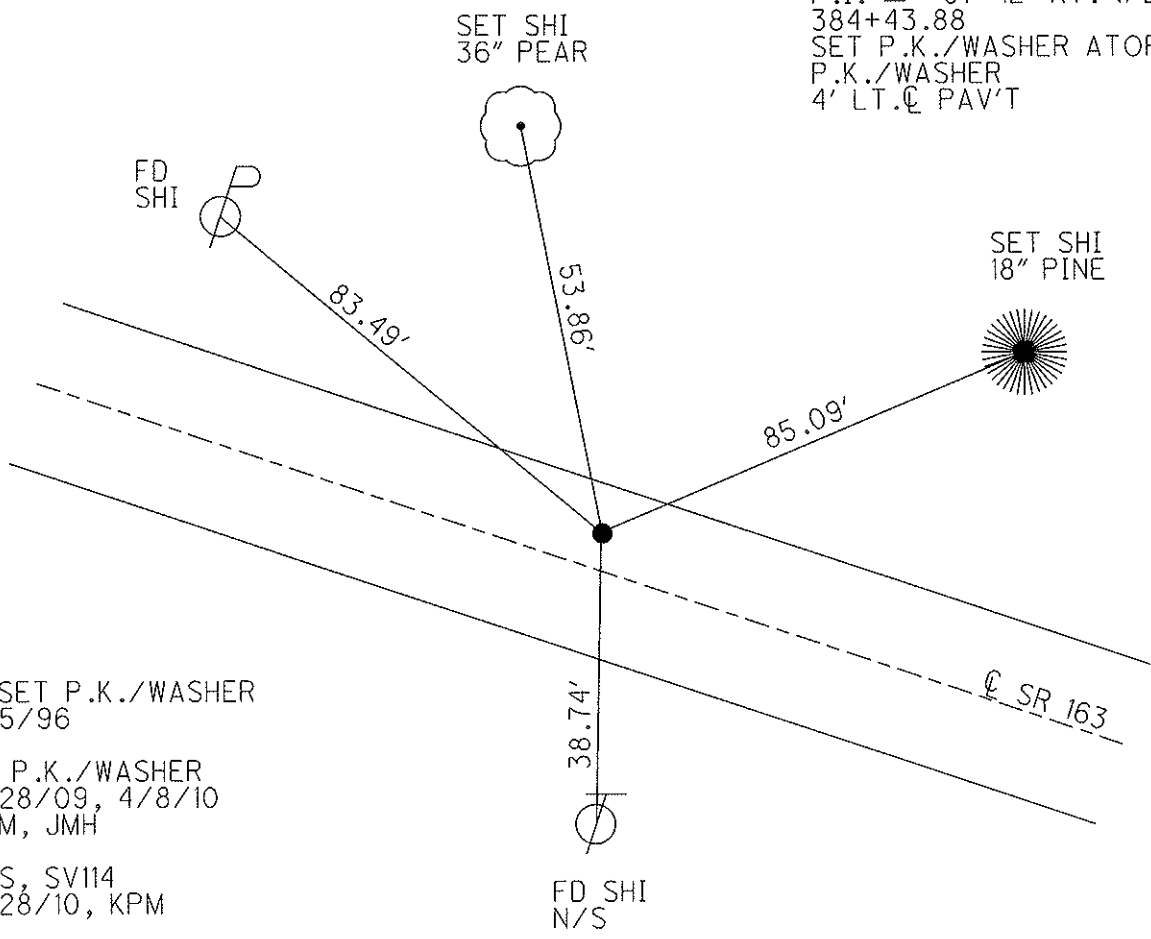
O.D.O.T. DISTRICT 2 SURVEY OFFICE (USE ONLY)

PERSONNEL	REFERENCE NO. <u>137</u>	SHEET <u>19</u> OF <u>63</u>
NOTES <u>LUMBREZER</u>	DATE <u>5/6/11</u>	ROUTE <u>SR 163</u>
H.C. <u>FINTEL</u>	WEATHER <u>CLOUDY</u>	COUNTY <u>OTTAWA</u>
R.C. <u>LUMBREZER</u>	TEMP. <u>60°</u>	TOWNSHIP <u>DANBURY</u>
		SECTION <u>2-13</u>

TYPE MONUMENT P.K./WASHER  
 ON SURFACE - ~~BELOW~~ ON  
 LEFT - Q PAV'T - ~~RIGHT~~ 4'  
7.5' TO LT EDGE PAVEMENT  
 S.L.M. 1787+67  
 Grid: Northing: 679177.353 Easting: 1890985.178



1983 RECORD  
 P.I.  $\Delta = 01^\circ 12'$  RT. (PLAN)  
 384+43.88  
 SET P.K./WASHER ATOP  
 P.K./WASHER  
 4' LT. Q PAV'T



RESET P.K./WASHER  
 6/5/96  
 FD P.K./WASHER  
 9/28/09, 4/8/10  
 KPM, JMH  
 GPS, SV114  
 4/28/10, KPM  
 SET MAG/WASHER  
 9/12/12, SDC  
 GPS, FINREF137  
 9/17/12, SDC

# O.D.O.T. DISTRICT 2 SURVEY OFFICE

PERSONNEL \_\_\_\_\_

REFERENCE NO. 137

SHEET 14 OF 52

NOTES CANTERBURY

H.C. LOEHKE

R.C. ROUSOS

DATE 5-25-95

WEATHER CLOUDY

TEMP. ± 56 ° F

ROUTE S.R. 163

COUNTY OTTAWA

TOWNSHIP DANBURY

SECTION CON. WEST RESERVE

T \_\_\_\_\_ R \_\_\_\_\_

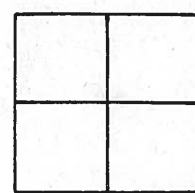
TYPE MONUMENT PK NAIL / WASHER Reset 6-5-94

ON SURFACE - BELOW ON SURFACE

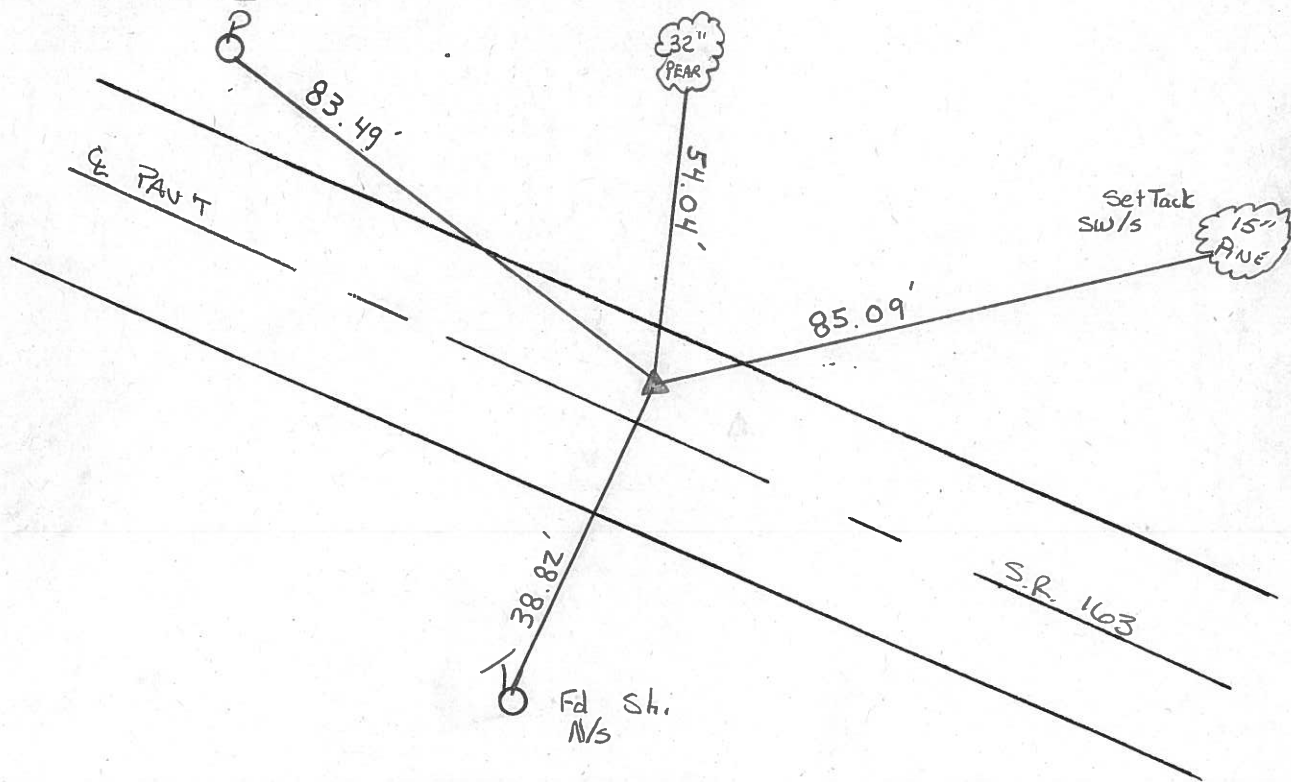
LEFT - ☉ PAV'T. - RIGHT 4.0' LT ☉

7.5' TO LT EDGE PAVEMENT

S.L.M. 1787 + 67



1983 RECORD  
 P.I. Δ = 01° 12' 00" RT (PLAN)  
 384 + 43.88  
 SET P.K. & WASHER ATOP P.K.  
 WASHER 4' LT. ☉ PAV'T.



County Ottawa S.R. #163

Date 11/21/83

Township Danbury

Weather sunny - windy

Section \_\_\_\_\_

Temp. 53°

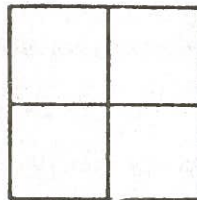
T-N, R-E

Personnel Cronin

Ripple

Geyman

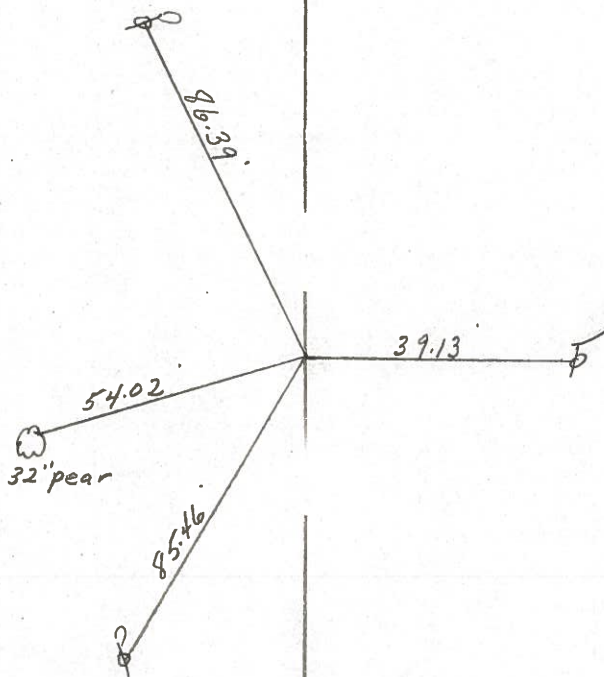
Barbour



137



Plan  
P.I. Δ = 01° 12' Rt  
384 + 43.88  
set P.K. & washer at top  
P.K. 4' Lt. & Pavement



Q 5.R #163A

PERSONNEL TITLE PERSONNEL TITLE

COUNTY Ottawa DATE 6-9-71

S. R. 163 WEATHER

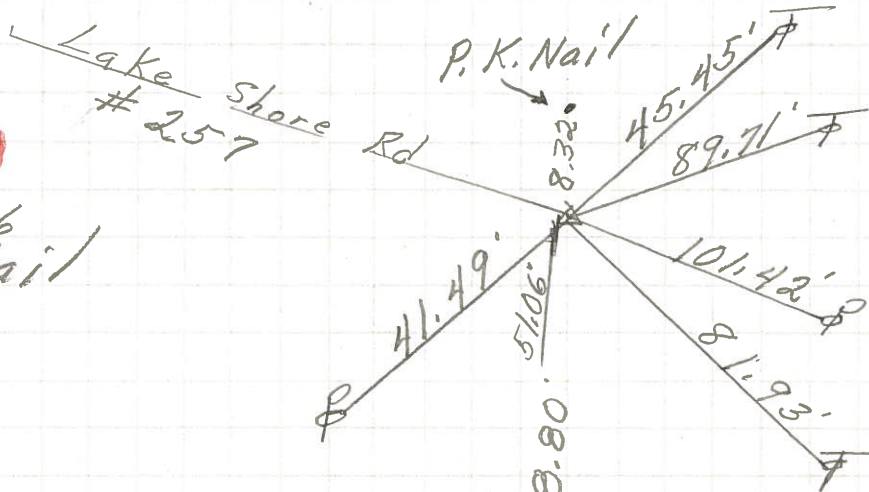
SEC. 2 TEMP.

DESCRIPTION S.R. #269 East JOB NO.

LEFT CENTER LINE RIGHT

**137B**

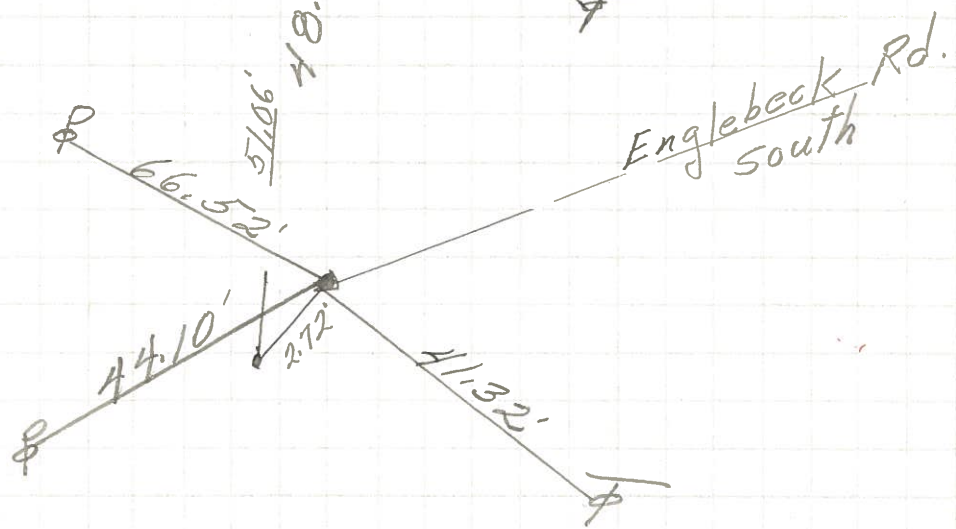
389+36  
P.K. Nail



**137A**

**137**

388+92  
2-P.K. Nails



**137**

P.I.  
384+43.88  
P.K. Nail

