

O.D.O.T. DISTRICT 2 SURVEY OFFICE (USE ONLY)

PERSONNEL

REFERENCE NO. 137 A

SHEET 20 OF 67

NOTES LUMBREZER

DATE 5/6/11

ROUTE SR 163

H.C. FINTEL

WEATHER CLOUDY

COUNTY OTTAWA

R.C. LUMBREZER

TEMP. 60°

TOWNSHIP DANBURY

SECTION 2-13

DWG BY ASTON PID 109637

TYPE MONUMENT MONBOX W/ 1" IPIN

ON SURFACE - ~~BELOW~~ ON

OFFSET \odot PAVEMENT - LT : RT

- TO - EDGE PAVEMENT

STATION: 388+85.92

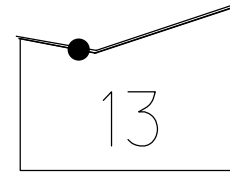
HORIZ.DATUM: NAD83(2011)

GEOID: 2012B

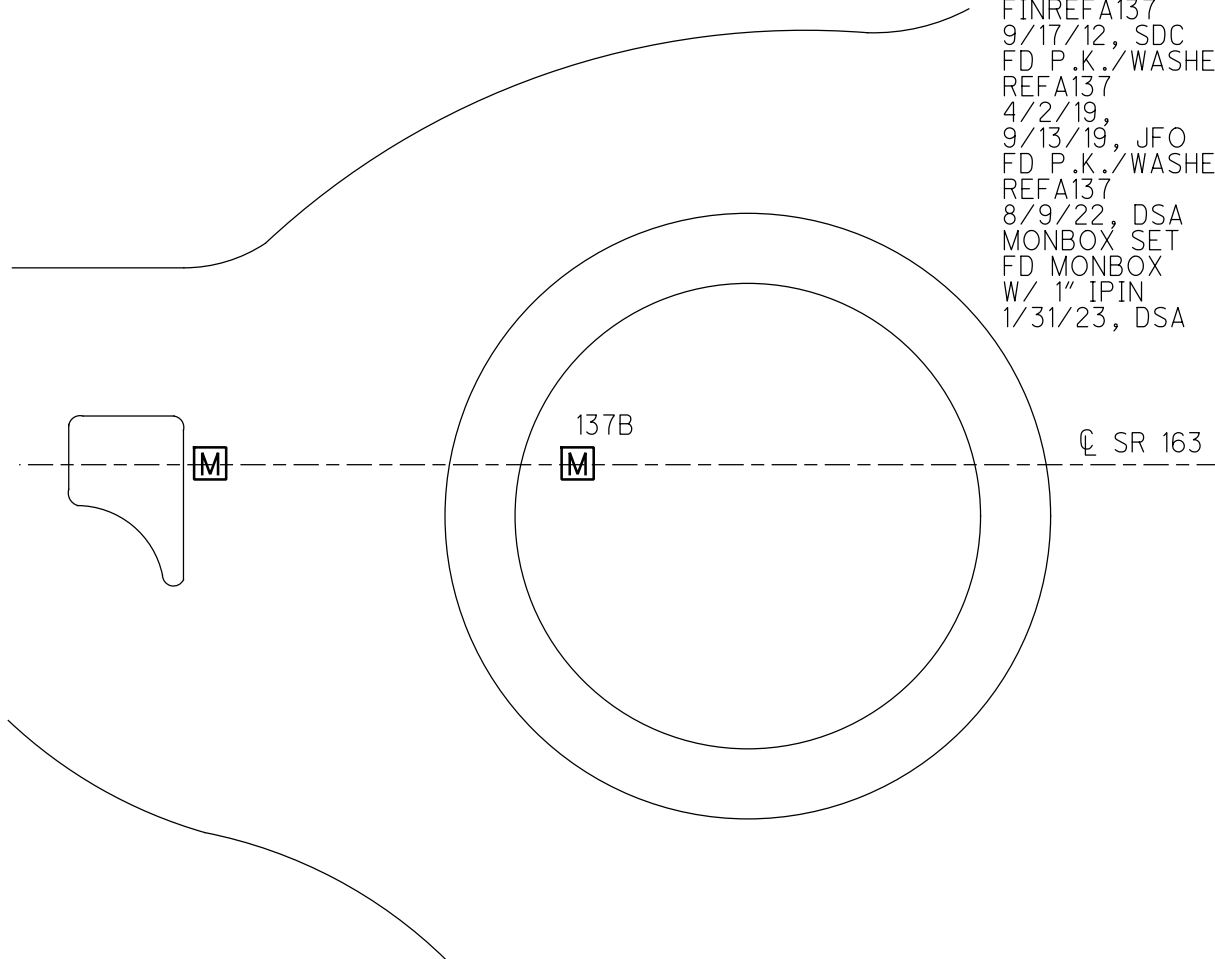
GRID: NORTHING: 679034.693

EASTING: 1891403.769

NOTE:
THIS MAP IS FOR ODOT PURPOSES ONLY
TO INDEX REFERENCE TIES AND DOES NOT
REPRESENT TRUE LAND SUBDIVISION.



RECORD: P.O.T.
FD IPIPE
SVA137
SET MAG/WASHER
FINREFA137
9/17/12, SDC
FD P.K./WASHER
REFA137
4/2/19,
9/13/19, JFO
FD P.K./WASHER
REFA137
8/9/22, DSA
MONBOX SET
FD MONBOX
W/ 1" IPIN
1/31/23, DSA



O.D.O.T. DISTRICT 2 SURVEY OFFICE (USE ONLY)

PERSONNEL

REFERENCE NO. 137 A

SHEET 20 OF 63

NOTES LUMBREZER

DATE 5/6/11

ROUTE SR 163

H.C. FINTEL

WEATHER CLOUDY

COUNTY OTTAWA

R.C. LUMBREZER

TEMP. 60°

TOWNSHIP DANBURY

SECTION 2-13

DWG BY NIESE PID 107060

TYPE MONUMENT 3/4" IPIPE

ON SURFACE - ~~BELOW~~ ON

OFFSET ϕ PAVEMENT - LT : RT

- TO - EDGE PAVEMENT

STATION: 1789+39.20

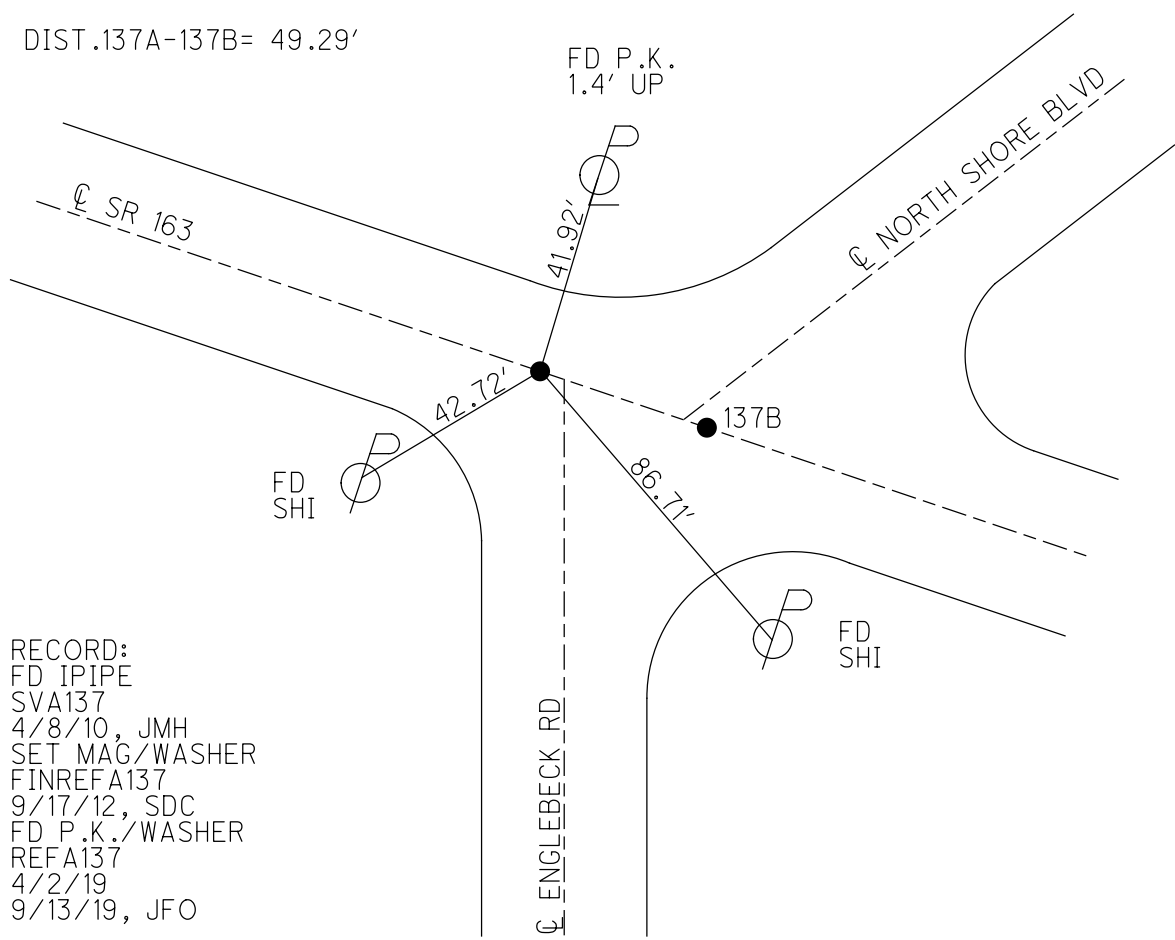
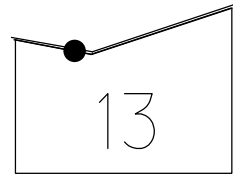
HORIZ.DATUM: NAD83(2011)

GEOID: 2012A

GRID: NORTHING: 679035.200

EASTING: 1891403.686

NOTE:
THIS MAP IS FOR ODOT PURPOSES ONLY.
TO INDEX REFERENCE TIES, AND DOES NOT
REPRESENT TRUE LAND SUBDIVISION.

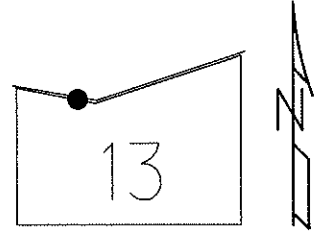


RECORD:
FD IPIPE
SVA137
4/8/10, JMH
SET MAG/WASHER
FINREFA137
9/17/12, SDC
FD P.K./WASHER
REFA137
4/2/19
9/13/19, JFO

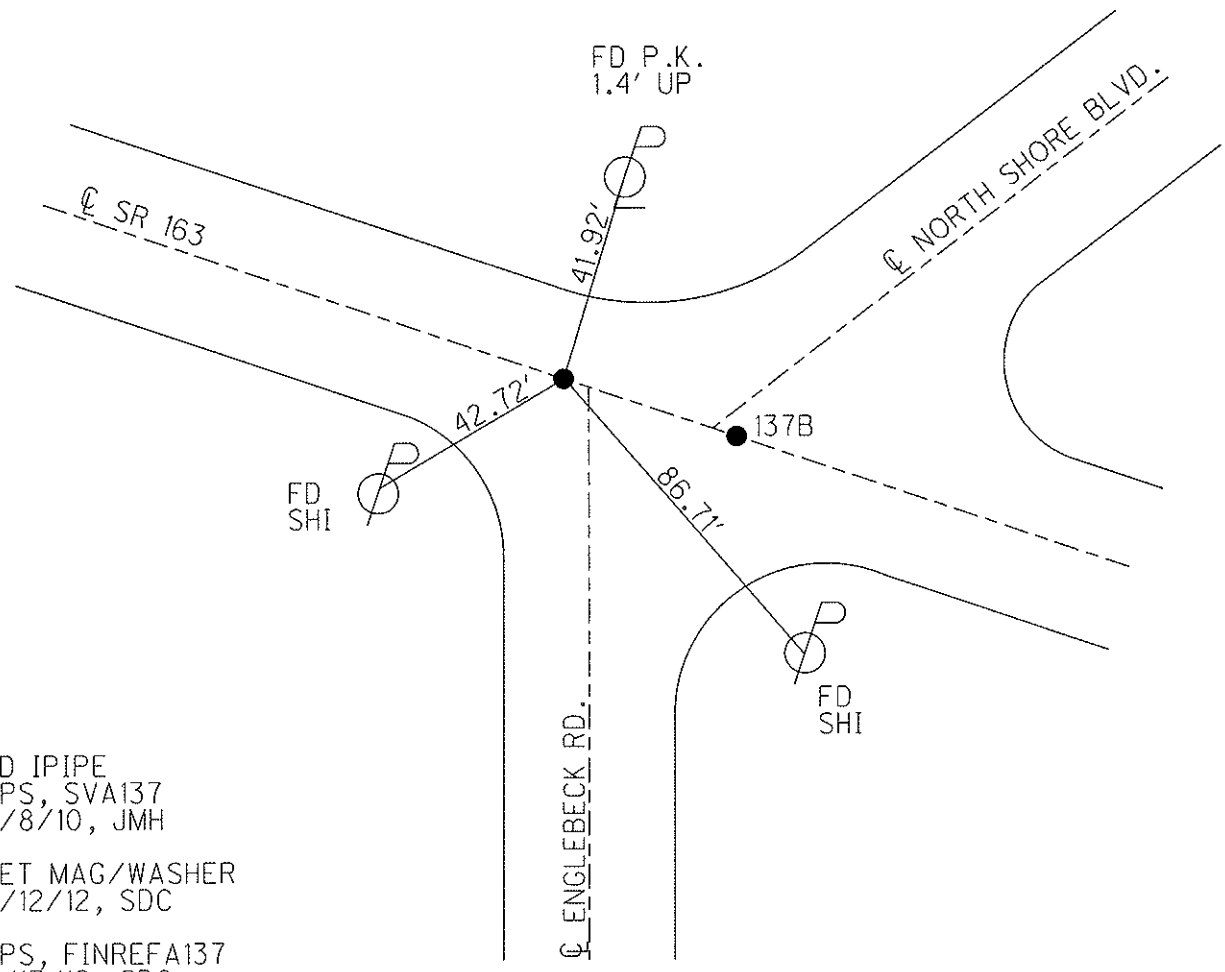
O.D.O.T. DISTRICT 2 SURVEY OFFICE (USE ONLY)

PERSONNEL	REFERENCE NO. <u>137 A</u>	SHEET <u>20</u> OF <u>63</u>
NOTES <u>LUMBREZER</u>	DATE <u>5/6/11</u>	ROUTE <u>SR 163</u>
H.C. <u>FINTEL</u>	WEATHER <u>CLOUDY</u>	COUNTY <u>OTTAWA</u>
R.C. <u>LUMBREZER</u>	TEMP. <u>60°</u>	TOWNSHIP <u>DANBURY</u>
		SECTION <u>2-13</u>

TYPE MONUMENT 3/4" IPIPE
 ON SURFACE - BELOW ON
 LEFT - ☉ PAV'T - RIGHT _____
_____ TO _____ EDGE PAVEMENT
 S.L.M. 1789+39.2
 Grid: Northing: 679035.159 Easting: 1891403.665



DISTANCE:
 137A- 137B= 49.29'



FD IPIPE
 GPS, SVA137
 4/8/10, JMH

 SET MAG/WASHER
 9/12/12, SDC

 GPS, FINREFA137
 9/17/12, SDC

PERSONNEL	TITLE	PERSONNEL	TITLE
COUNTY <u>Ottawa</u> DATE <u>6-9-71</u>			
S. R. <u>163</u> WEATHER _____			
SEC. <u>2</u> TEMP. _____			
DESCRIPTION <u>S.R. #269 East</u> JOB NO. _____			
	LEFT	CENTER LINE	RIGHT

137B

389+36
P.K. Nail

137A

137

388+92
2 - P.K. Nails

137

P.I.
384+43.88
P.K. Nail

