

O.D.O.T. DISTRICT 2 SURVEY OFFICE (USE ONLY)

PERSONNEL

REFERENCE NO. 137 B

SHEET 21 OF 67

NOTES LUMBREZER

DATE 5/6/11

ROUTE SR 163

H.C. FINTEL

WEATHER CLOUDY

COUNTY OTTAWA

R.C. LUMBREZER

TEMP. 60°

TOWNSHIP DANBURY

SECTION 2-13

DWG BY ASTON

PID 109637

TYPE MONUMENT MONBOX W/ 1" IPIN

ON SURFACE - ~~BELOW~~ ON

OFFSET 0 PAVEMENT - LT : RT

- TO - EDGE PAVEMENT

STATION: 389+34.40

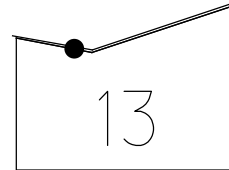
HORIZ.DATUM: NAD83(2011)

GEOID: 2012B

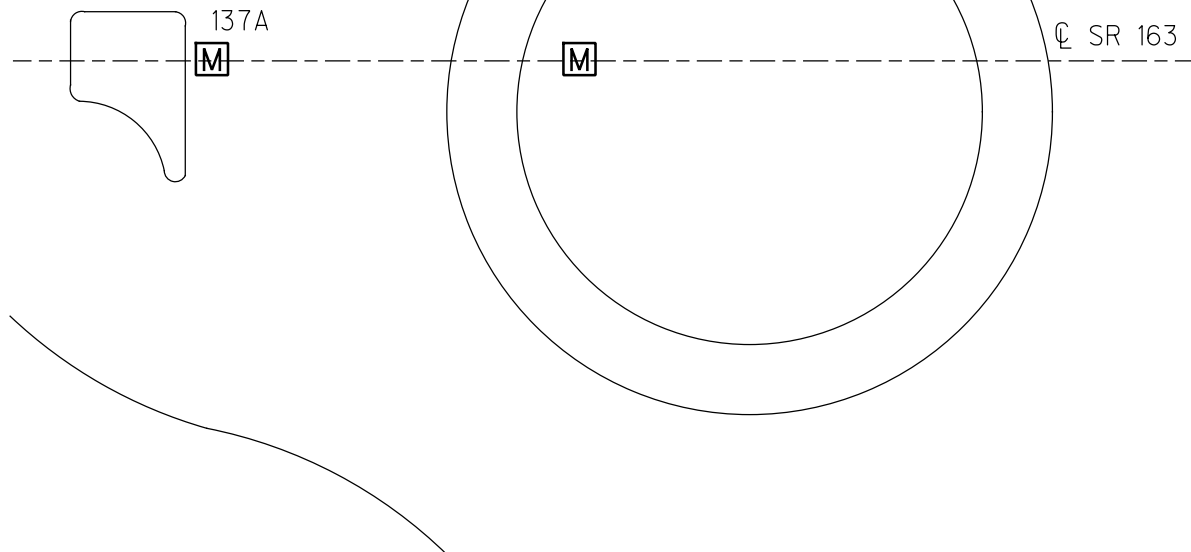
GRID: NORTHING: 679019.340

EASTING: 1891499.599

NOTE:
THIS MAP IS FOR ODOT PURPOSES ONLY
TO INDEX REFERENCE TIES, AND DOES NOT
REPRESENT TRUE LAND SUBDIVISION.



RECORD: P.O.T.
FD P.K./WASHER
SV155
4/8/10, JMH
SET MAG/WASHER
FINREFB137
9/17/12, SDC
FD P.K./WASHER
REFB137
4/2/19
9/13/19, JFO
FD PK/WASHER
REFB137
8-9-22, DSA
FD MONBOX
W/ 1" IPIN
NEWREFB137
1-21-23, DSA



O.D.O.T. DISTRICT 2 SURVEY OFFICE (USE ONLY)

PERSONNEL

REFERENCE NO. 137 B

SHEET 21 OF 63

NOTES LUMBREZER

DATE 5/6/11

ROUTE SR 163

H.C. FINTEL

WEATHER CLOUDY

COUNTY OTTAWA

R.C. LUMBREZER

TEMP. 60°

TOWNSHIP DANBURY

SECTION 2-13

DWG BY NIESE

PID 107060

TYPE MONUMENT P.K./WASHER

ON SURFACE - ~~BELOW~~ ON

OFFSET ϕ PAVEMENT - LT : RT

 TO EDGE PAVEMENT

STATION: 1789+89.29

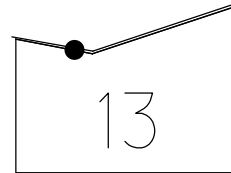
HORZ.DATUM: NAD83(2011)

GEOID: 2012A

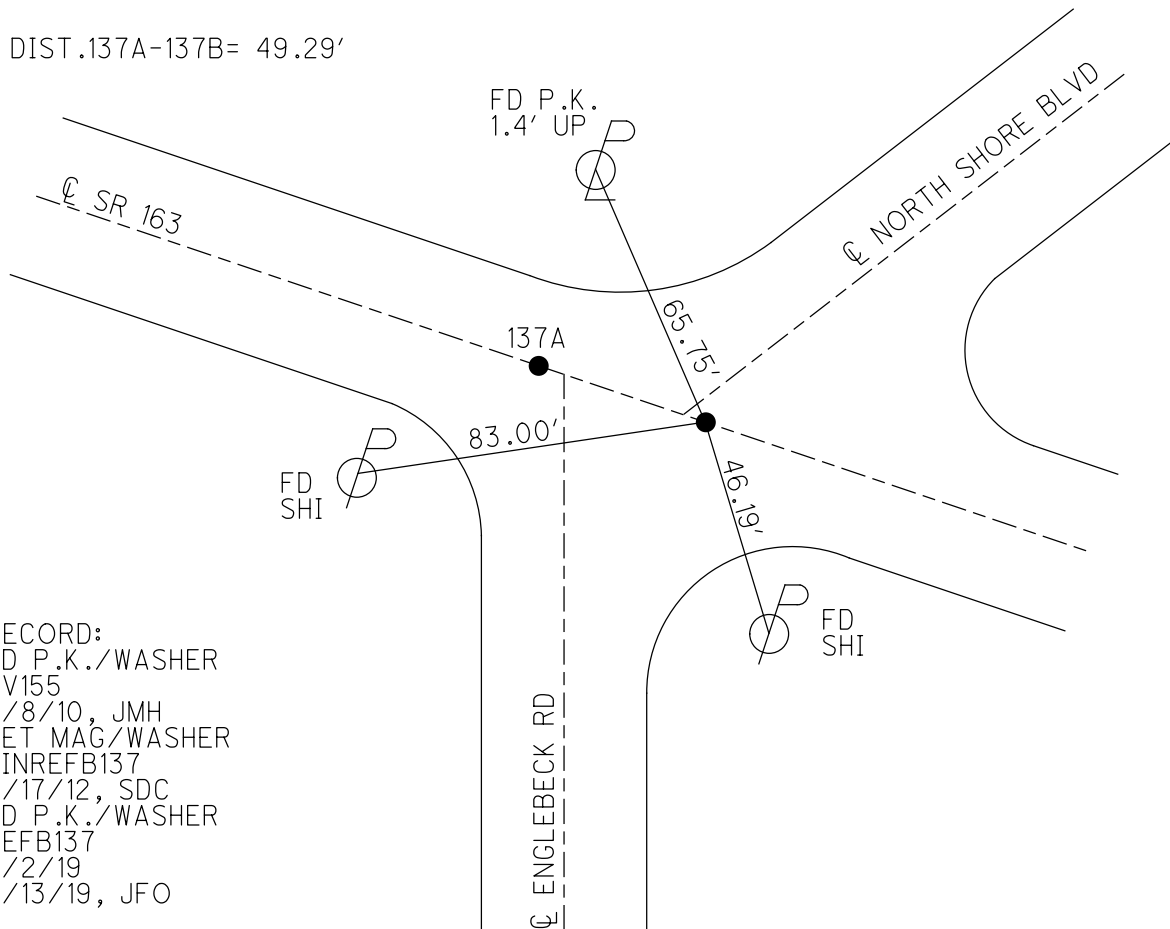
GRID: NORTHING: 679020.031

EASTING: 1891450.552

NOTE:
THIS MAP IS FOR ODOT PURPOSES ONLY
TO INDEX REFERENCE TIES, AND DOES NOT
REPRESENT TRUE LAND SUBDIVISION.



DIST.137A-137B= 49.29'



RECORD:
FD P.K./WASHER
SV155
4/8/10, JMH
SET MAG/WASHER
FINREFB137
9/17/12, SDC
FD P.K./WASHER
REFB137
4/2/19
9/13/19, JFO

O.D.O.T. DISTRICT 2 SURVEY OFFICE (USE ONLY)

PERSONNEL

REFERENCE NO. 137 B

SHEET 21 OF 63

NOTES LUMBREZER

DATE 5/6/11

ROUTE SR 163

H.C. FINTEL

WEATHER CLOUDY

COUNTY OTTAWA

R.C. LUMBREZER

TEMP. 60°

TOWNSHIP DANBURY

SECTION 2-13

TYPE MONUMENT P.K./WASHER

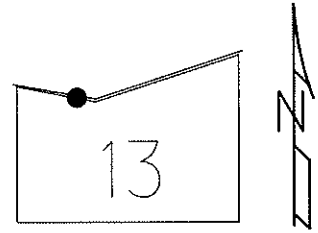
ON SURFACE - ~~BELOW~~ ON

LEFT - Q PAV'T - RIGHT

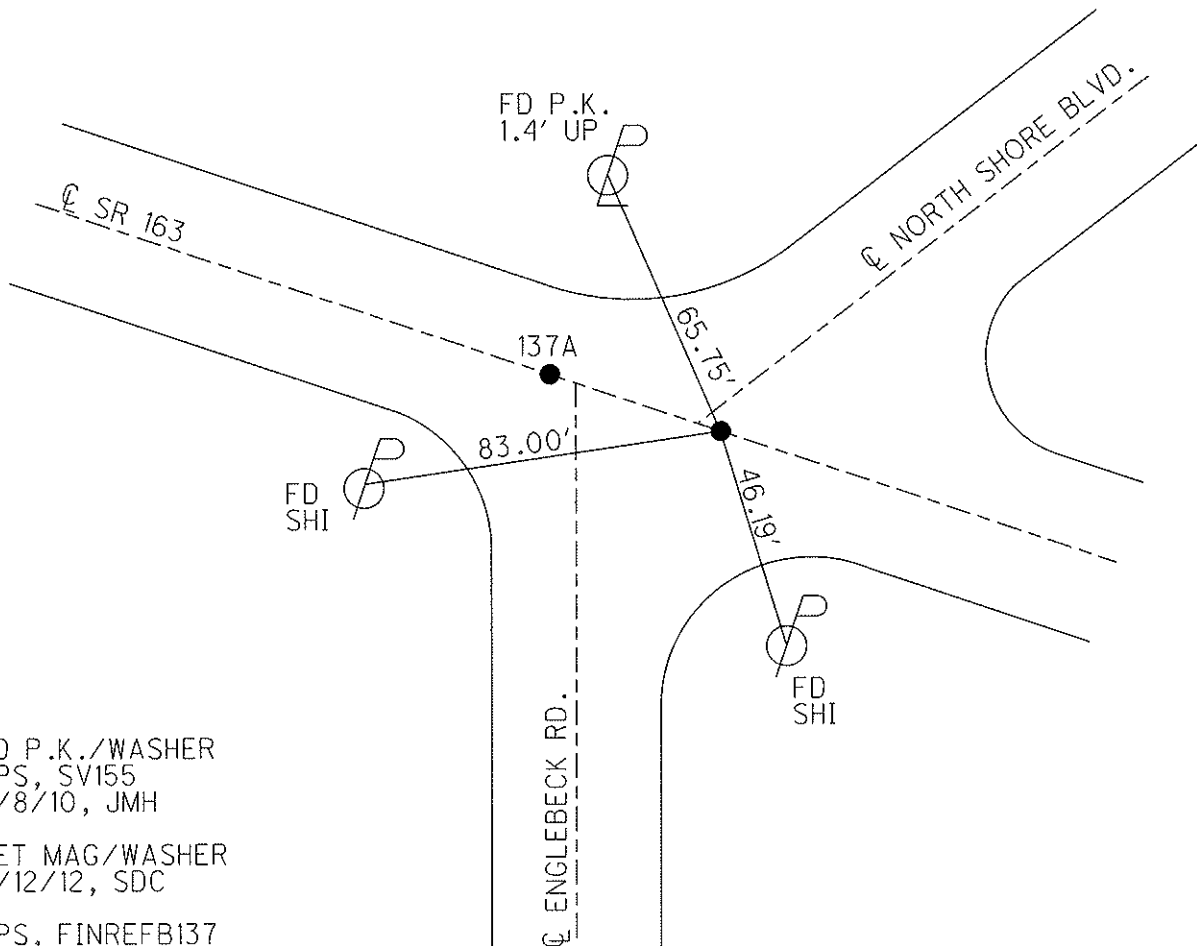
 TO EDGE PAVEMENT

S.L.M. 1789+89.29

Grid: Northing: 679020.071 Easting: 1891450.448



DISTANCE:
137A- 137B= 49.29'



FD P.K./WASHER
GPS, SV155
4/8/10, JMH

SET MAG/WASHER
9/12/12, SDC

GPS, FINREFB137
9/17/12, SDC

PERSONNEL	TITLE	PERSONNEL	TITLE
COUNTY <u>Ottawa</u> DATE <u>6-9-71</u>			
S. R. <u>163</u> WEATHER _____			
SEC. <u>2</u> TEMP. _____			
DESCRIPTION <u>S.R. #269 East</u> JOB NO. _____			
	LEFT	CENTER LINE	RIGHT

137B

389+36
P.K. Nail

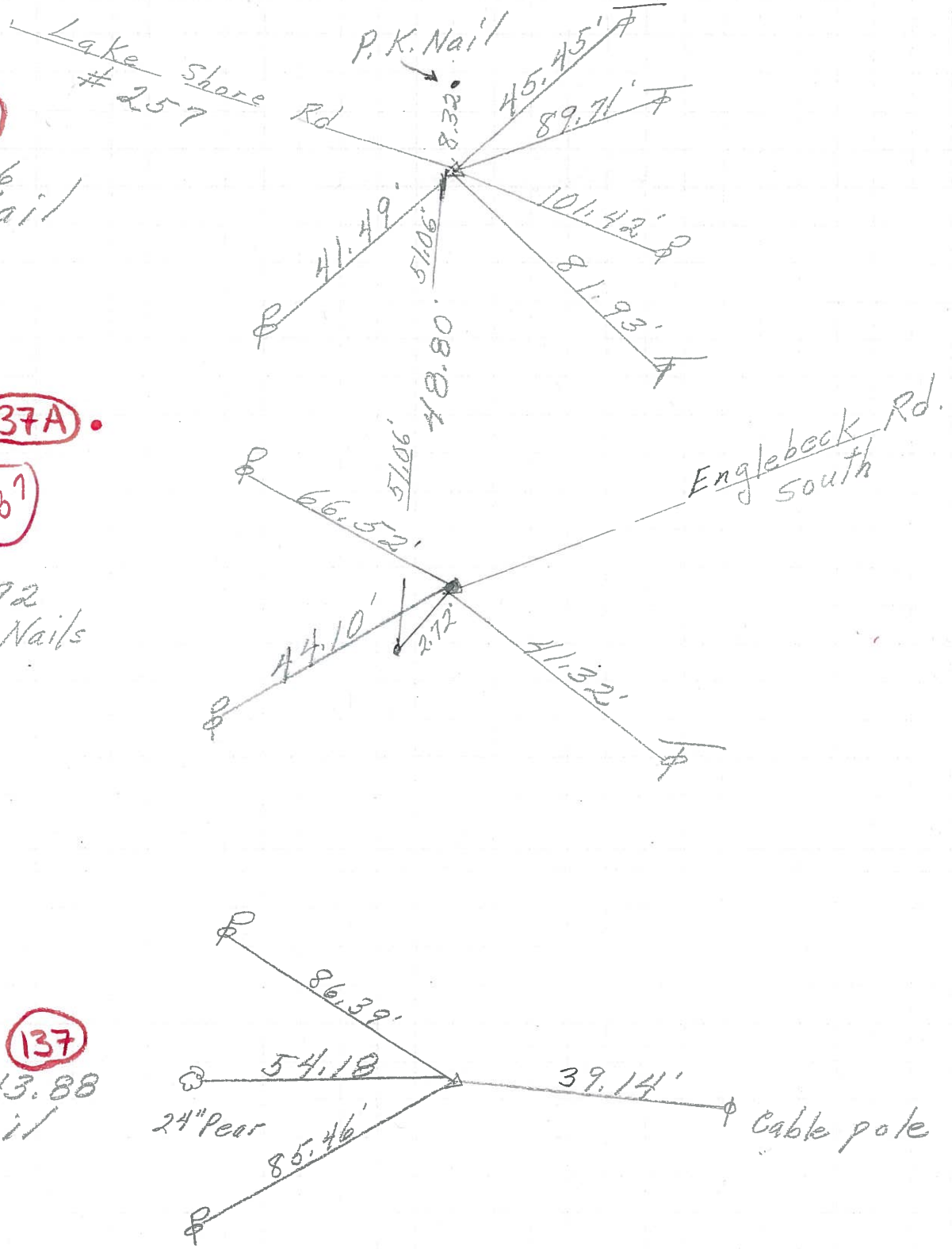
137A

137

388+92
2- P.K. Nails

137

P.I.
384+43.88
P.K. Nail



PERSONNEL	TITLE	PERSONNEL	TITLE	COUNTY	DATE	WEATHER	TEMP.
Schneider		Potts		Ottawa	9-10-68	cloudy	7
Mosser				S. R. 163			
Barbour				SEC. 5, R. #269 - East			
Redding							

DESCRIPTION Ties for Control Points JOB NO. _____

