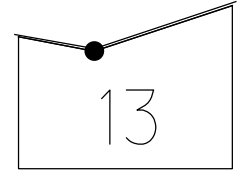


O.D.O.T. DISTRICT 2 SURVEY OFFICE (USE ONLY)

PERSONNEL	REFERENCE NO. <u>138</u>	SHEET <u>23</u> OF <u>67</u>
NOTES <u>LUMBREZER</u>	DATE <u>5/6/11</u>	ROUTE <u>SR 163</u>
H.C. <u>FINTEL</u>	WEATHER <u>CLOUDY</u>	COUNTY <u>OTTAWA</u>
R.C. <u>LUMBREZER</u>	TEMP. <u>60°</u>	TOWNSHIP <u>DANBURY</u>
		SECTION <u>2-13</u>
DWG BY <u>NIESE</u>	PID <u>107060</u>	

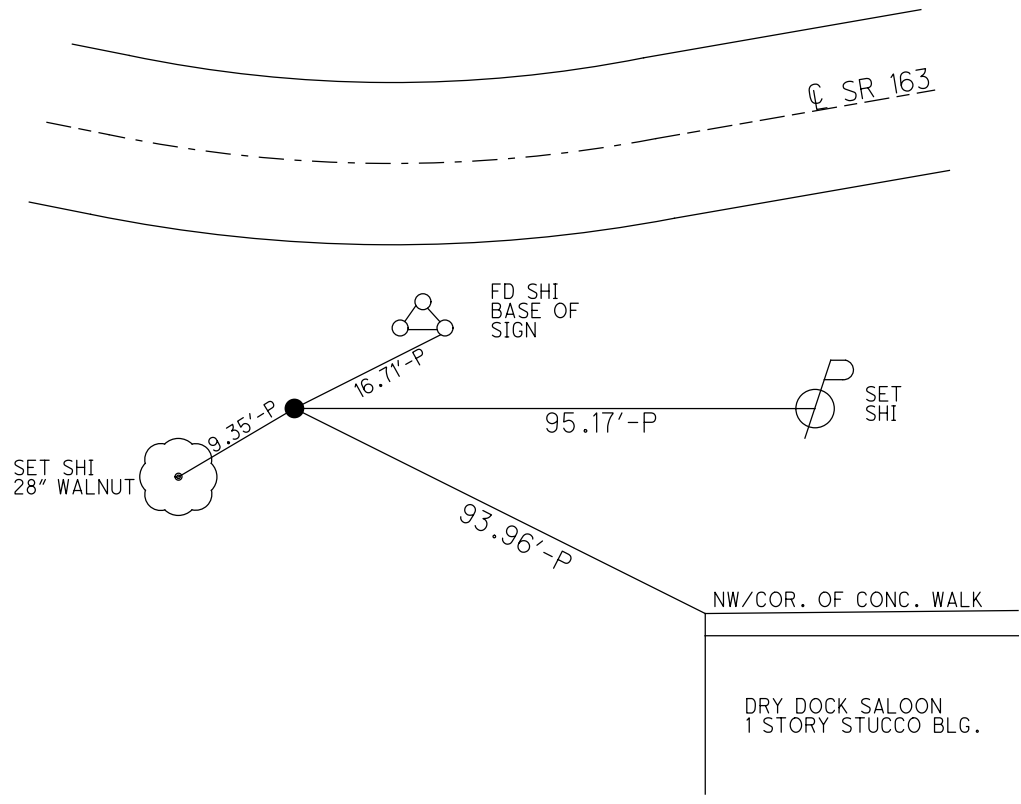
TYPE MONUMENT 5/8" IPIN
~~ON SURFACE~~ - BELOW 8"
 OFFSET \odot PAVEMENT 76.0' \perp : RT
60.0' RT TO RT EDGE PAVEMENT
 STATION: 1801.16

NOTE:
 THIS MAP IS FOR ODOT PURPOSES ONLY
 TO INDEX REFERENCE TIES, AND DOES NOT
 REPRESENT TRUE LAND SUBDIVISION.



HORZ. DATUM: NAD83(2011) GEOID: 2012B
 GRID: NORTHING: 678738.512 EASTING: 1892278.225

RECORD: P.I.
 $\Delta = 41^{\circ}45'$ LT
 STA. 398+10.26
 1983 PLAN
 FD IPIN
 6" DOWN
 FD 5/8" IPIN
 BENT N. WESTERLY
 9/28/09, 4/8/10
 SV115, AT HEAD
 SV116, AT BENT
 4/8/10
 9/9/10, KPM
 FD BENT IPIN
 REF138
 8/9/22, DSA



O.D.O.T. DISTRICT 2 SURVEY OFFICE (USE ONLY)

PERSONNEL

REFERENCE NO. 138

SHEET 22 OF 63

NOTES LUMBREZER

DATE 5/6/11

ROUTE SR 163

H.C. FINTEL

WEATHER CLOUDY

COUNTY OTTAWA

R.C. LUMBREZER

TEMP. 60°

TOWNSHIP DANBURY

SECTION 2-13

DWG BY NIESE PID 107060

TYPE MONUMENT 5/8" IPIN

~~ON SURFACE~~ - BELOW 8"

OFFSET \varnothing PAVEMENT 76.0' ~~LT~~ : RT

60.0' RT TO RT EDGE PAVEMENT

STATION: 1801.16

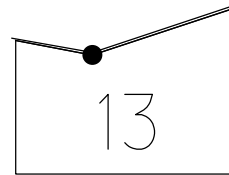
HORZ. DATUM: NAD83(2011)

GEOID: 2012A

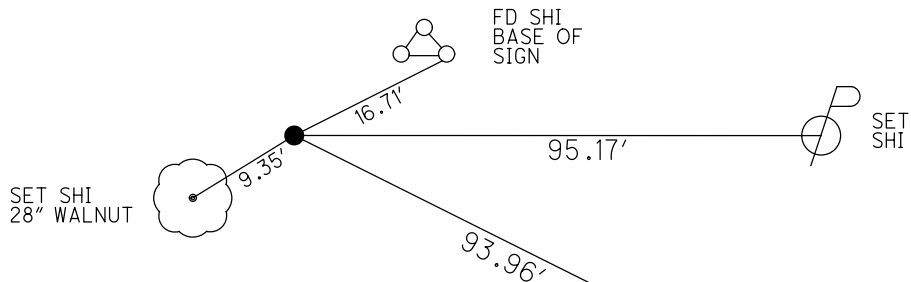
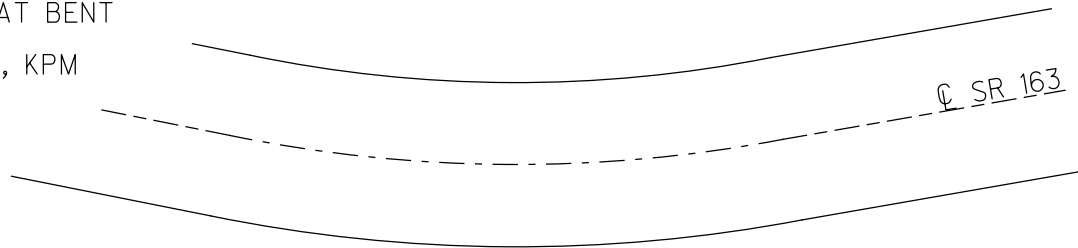
GRID: NORTHING: 678738.483

EASTING: 1892278.030

NOTE:
THIS MAP IS FOR ODOT PURPOSES ONLY
TO INDEX REFERENCE TIES, AND DOES NOT
REPRESENT TRUE LAND SUBDIVISION.



RECORD: P.I.
 $\Delta = 41^{\circ}45'$ LT
 STA. 398+10.26
 1983 PLAN
 FD IPIN
 6" DOWN
 FD 5/8" IPIN
 BENT N.WESTERLY
 9/28/09, 4/8/10
 SV115, AT HEAD
 SV116, AT BENT
 4/8/10
 9/9/10, KPM



NW/COR. OF CONC. WALK

DRY DOCK SALOON
1 STORY STUCCO BLG.

O.D.O.T. DISTRICT 2 SURVEY OFFICE (USE ONLY)

PERSONNEL

REFERENCE NO. 138

SHEET 22 OF 63

NOTES LUMBREZER

DATE 5/6/11

ROUTE SR 163

H.C. FINTEL

WEATHER CLOUDY

COUNTY OTTAWA

R.C. LUMBREZER

TEMP. 60°

TOWNSHIP DANBURY

SECTION 2-13

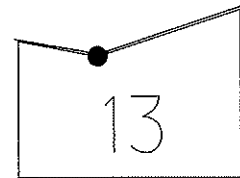
TYPE MONUMENT 5/8" IPIN

~~ON SURFACE~~ - BELOW 8"

~~LEFT~~ - CL PAV'T - RIGHT 76'

60' RT TO RT EDGE PAVEMENT

S.L.M. 1801+16



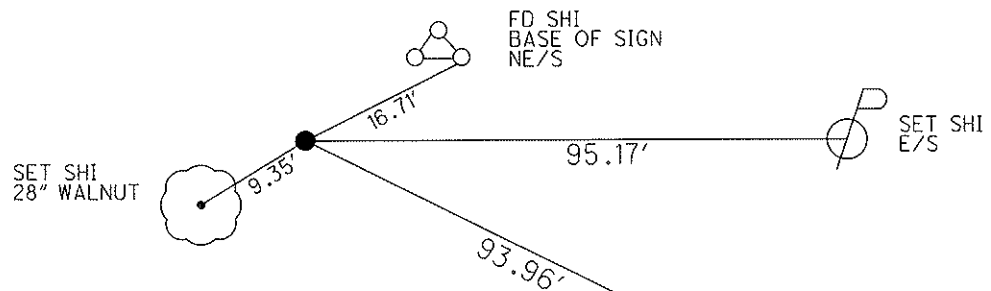
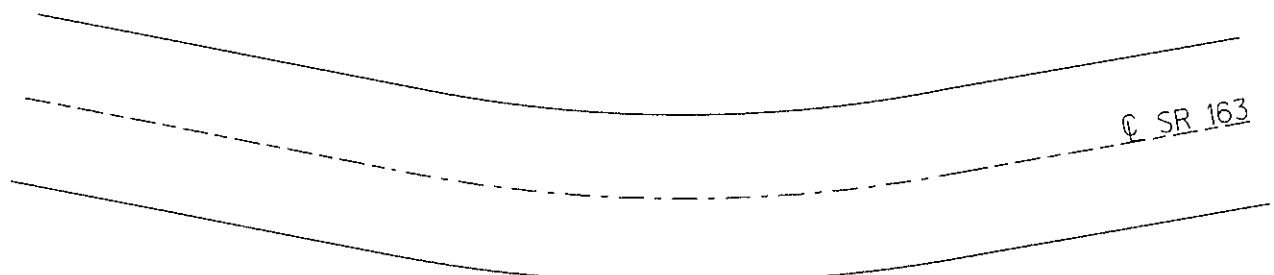
Grid: Northing: 678738.4826 Easting: 1892278.0299

1983 RECORD
 P.I. Δ = 41° 45' LT. (PLAN)
 398+10.26
 FD RE-ROD 6" BELOW GRND.
 60' RT. RT. EDGE PAV'T

FD IPIN, BENT
 TO THE N.W.

9/28/09, 4/8/10
 KPM, JMH

GPS, SV115, AT HEAD
 SV116, AT BENT
 4/8/10, 9/9/10



NW/COR. OF CONC. WALK

DRY DOCK SALOON
 1 STORY STUCCO BLDG.

O.D.O.T. DISTRICT 2 SURVEY OFFICE

PERSONNEL

REFERENCE NO. 138

SHEET 15 OF 52

NOTES CANTERBURY

H.C. LOEHRKE

R.C. ROUSOS

DATE 5-18-95

WEATHER CLOUDY

TEMP. +60°F

ROUTE S.R. 163

COUNTY OTTAWA

TOWNSHIP DANBURY

SECTION COMM. WEST. RESERVE

T R

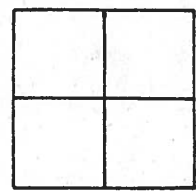
TYPE MONUMENT 5/8" RE-ROD

ON SURFACE - BELOW 9" BELOW

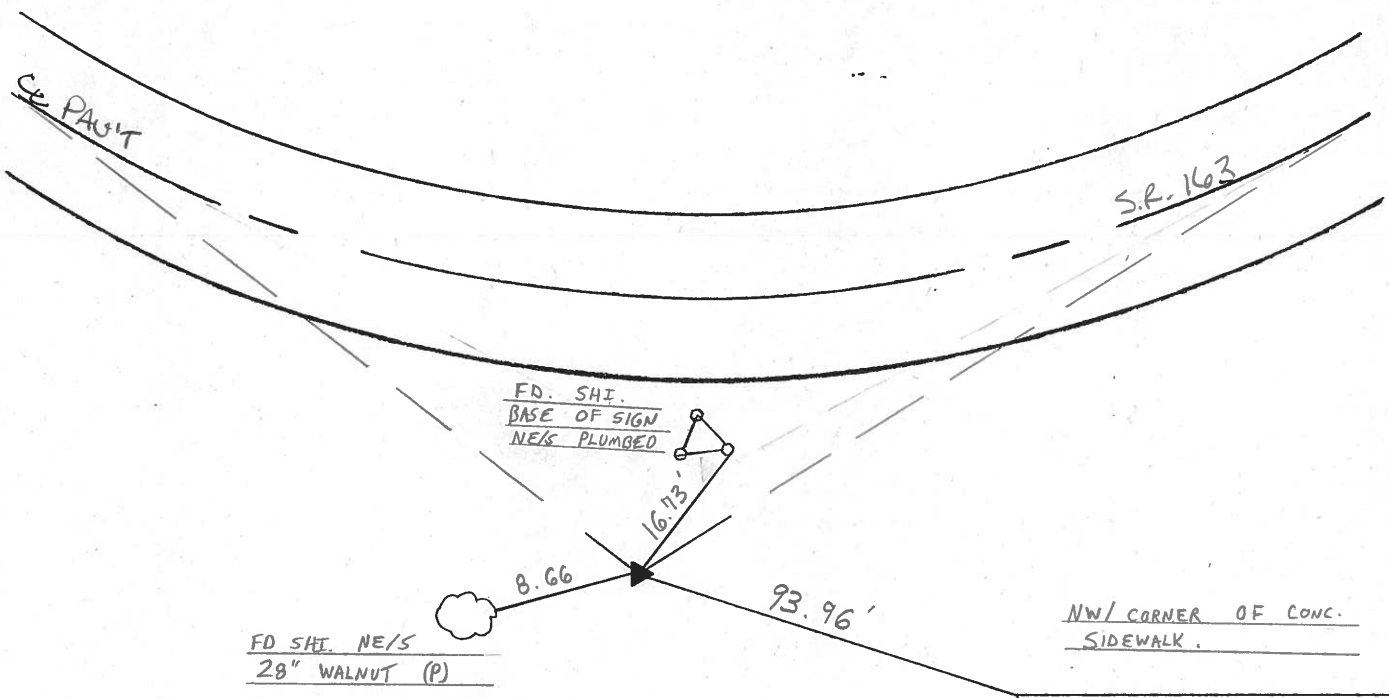
LEFT - & PAV'T. - RIGHT 76' RT. &

60' RIGHT TO OF RT. EDGE PAVEMENT

S.L.M. 1801 + 16



1983 RECORD
 P.I. $\Delta = 41^{\circ}46'00''$ LT. (PIAN)
 398 + 10.26
 FD. RE-ROD 6" BELOW GROUND
 60' RT. RT. EDGE. PAVT.



DRY DOCK SALOON
 1 STORY STUCCO BLDG.

County Ottawa S.R. # 163

Date 11/22/83

Township Danbury

Weather sunny

Section _____

Temp. 44°

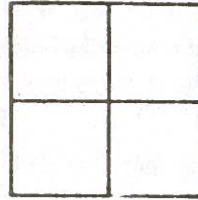
T-N, R-E

Personnel Cronin

Ripple

Geyman

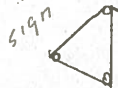
Barbour



138



Plan
P.I. Δ = 41°45' Lt.
398 + 10.26
Fd re-rod 6" below ground
60 Rt. Rt. E. Point



17.06
Plumbed

plumbed

8.72'

28' walnut

21.69
Plumbed

PK & shiner
6" cedar

S.R. # 163

PERSONNEL TITLE PERSONNEL TITLE

COUNTY Ottawa DATE 6-10-71

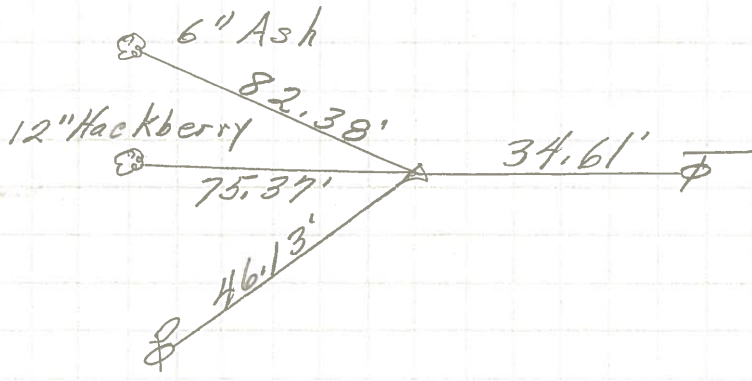
S. R. 163 WEATHER

SEC. 2 TEMP.

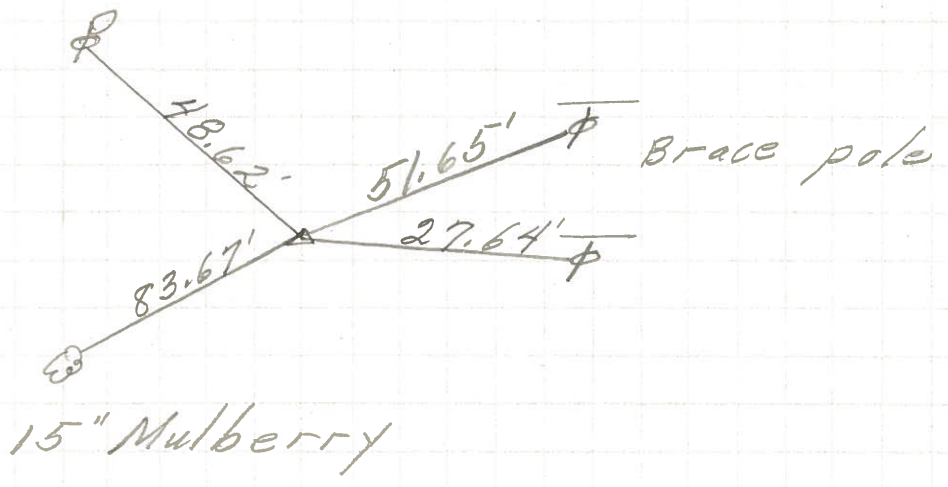
DESCRIPTION S.R. # 269 East JOB NO.

LEFT CENTER LINE RIGHT

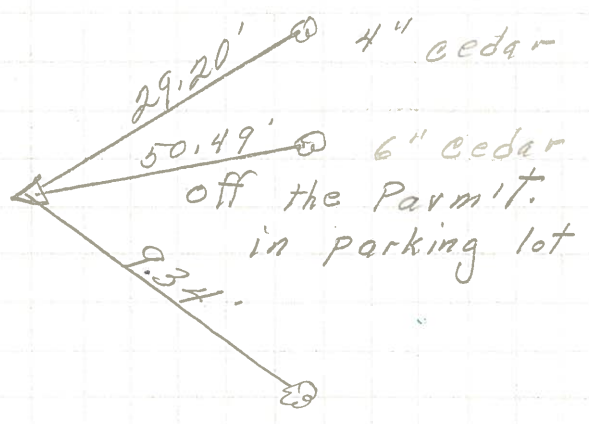
P.I. **(140)**
417+02.07
P.K. Nail



(139)
412+40.07
P.K. Nail



(138)
398+10.26



did not find

28" Walnut

PERSONNEL	TITLE	PERSONNEL	TITLE
Schneider		Potts	
Mosser			
Barbour			
Redding			

COUNTY Ottawa DATE 9-10-68
 S. R. 163 WEATHER cloudy
 SEC. S.R.#269 - East TEMP. 70°

DESCRIPTION Ties for Control Points JOB NO. _____

LEFT	CENTER LINE	RIGHT
P. I. 420+26.90 P. K. Nail on surface 6380 (141)		
P. I. 417+02.07 P. K. Nail on surface 6379 (140)		
P. I. 412+40.07 P. K. Nail on surface 6378 (139)		
P. I. 398+10.26 off Permit 6377 (138)		did not find
P. I. 384+43.88 3-P. K. Nails on surface 6376 (137B)		