

O.D.O.T. DISTRICT 2 SURVEY OFFICE (USE ONLY)

PERSONNEL	REFERENCE NO. <u>141</u>	SHEET <u>25</u> OF <u>66</u>
NOTES <u>LUMBREZER</u>	DATE <u>5/6/12</u>	ROUTE <u>SR 163</u>
H.C. <u>FINTEL</u>	WEATHER <u>CLOUDY</u>	COUNTY <u>OTTAWA</u>
R.C. <u>LUMBREZER</u>	TEMP. <u>60°</u>	TOWNSHIP <u>DANBURY</u>
		SECTION <u>2-13</u>

DWG BY NIESE PID 107060

TYPE MONUMENT P.K./WASHER

~~ON SURFACE~~ - BELOW 5"

OFFSET \odot PAVEMENT ON LT : RT

12.7' TO LT EDGE PAVEMENT

STATION: 1823+40

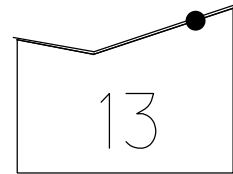
HORZ.DATUM: NAD83(2011)

GEOID: 2012A

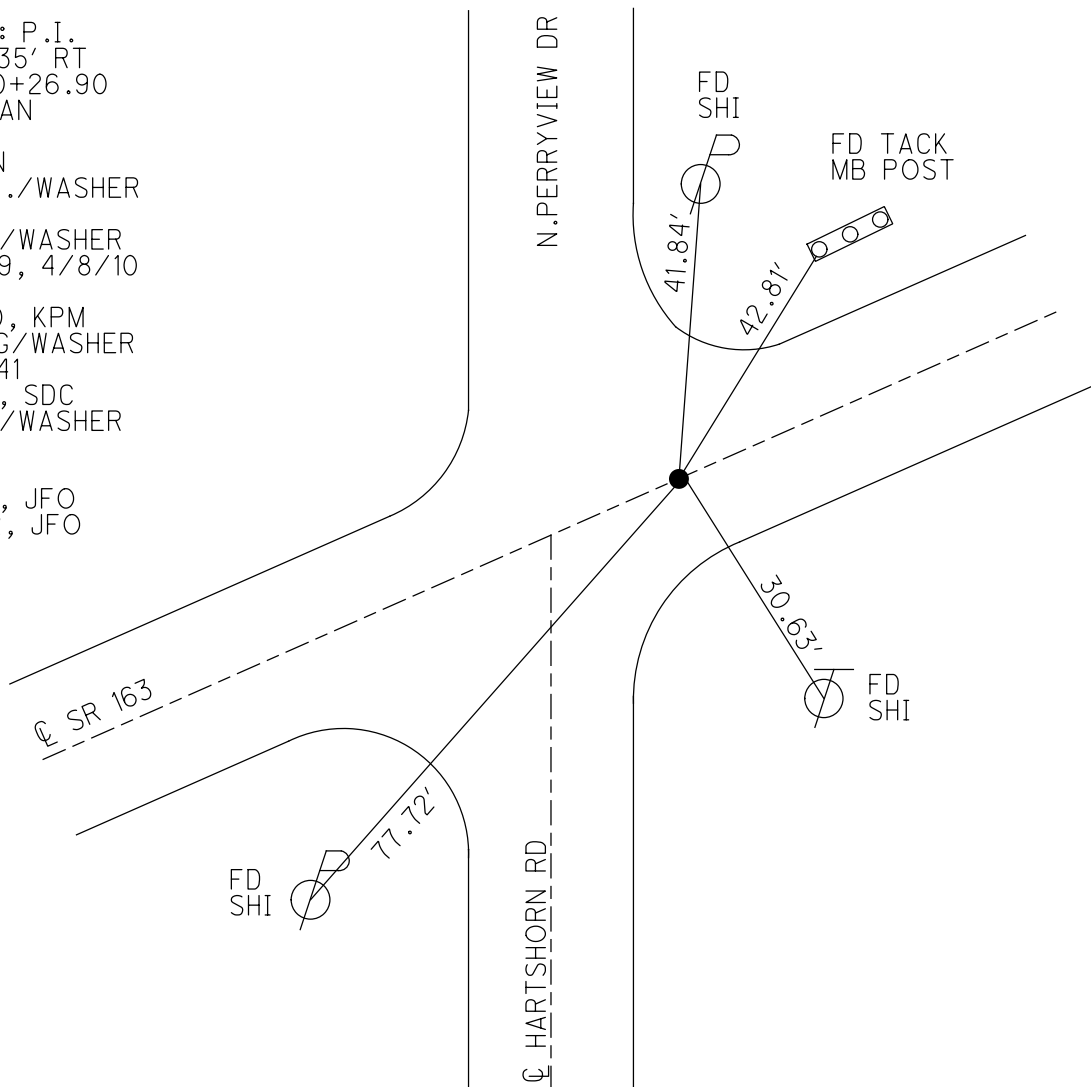
GRID: NORTHING: 679650.727

EASTING: 1894313.948

NOTE:
THIS MAP IS FOR ODOT PURPOSES ONLY
TO INDEX REFERENCE TIES, AND DOES NOT
REPRESENT TRUE LAND SUBDIVISION.



RECORD: P.I.
 $\Delta = 01^{\circ} 35' RT$
 STA. 420+26.90
 1983 PLAN
 FD IPIN
 7" DOWN
 SET P.K./WASHER
 6/5/96
 FD P.K./WASHER
 9/28/09, 4/8/10
 SV119
 4/28/10, KPM
 SET MAG/WASHER
 FINREF141
 9/19/12, SDC
 FD P.K./WASHER
 REF141
 4/2/19
 9/13/19, JFO
 4/21/22, JFO



O.D.O.T. DISTRICT 2 SURVEY OFFICE (USE ONLY)

PERSONNEL _____ REFERENCE NO. 141 SHEET 25 OF 63
 NOTES LUMBREZER DATE 5/6/12 ROUTE SR 163
 H.C. FINTEL WEATHER CLOUDY COUNTY OTTAWA
 R.C. LUMBREZER TEMP. 60° TOWNSHIP DANBURY
 SECTION 2-13
 DWG BY NIESE PID 107060

TYPE MONUMENT P.K./WASHER

~~ON SURFACE~~ - BELOW 5"

OFFSET C PAVEMENT ON LT : RT

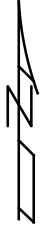
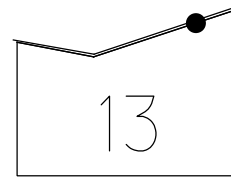
12.7' TO LT EDGE PAVEMENT

STATION: 1823+40

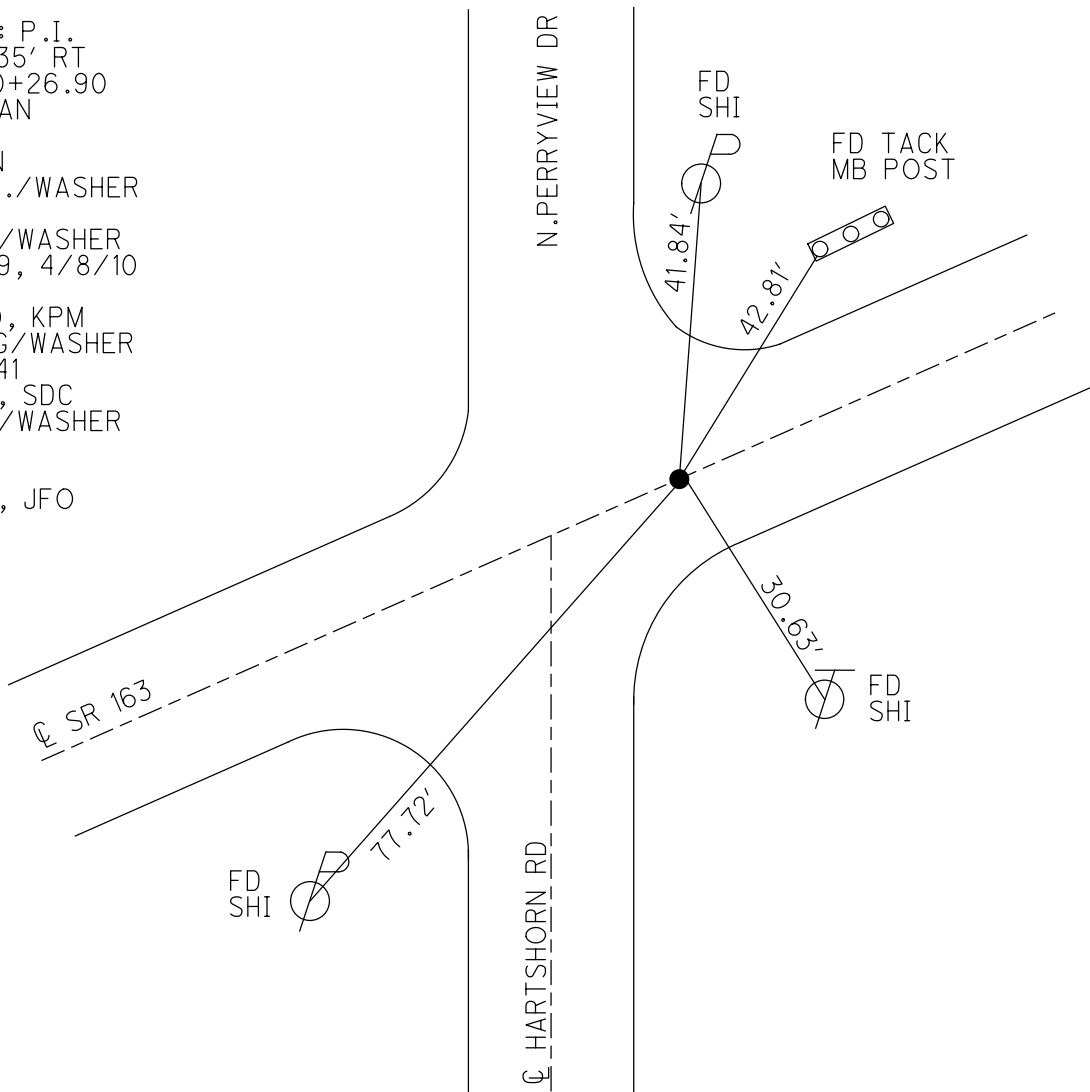
HORZ.DATUM: NAD83(2011) GEOID: 2012A

GRID: NORTHING: 679650.727 EASTING: 1894313.948

NOTE:
THIS MAP IS FOR ODOT PURPOSES ONLY
TO INDEX REFERENCE TIES, AND DOES NOT
REPRESENT TRUE LAND SUBDIVISION.



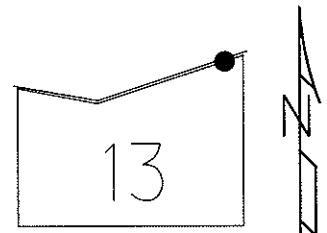
RECORD: P.I.
 $\Delta = 01^\circ 35' \text{ RT}$
 STA. 420+26.90
 1983 PLAN
 FD IPIN
 7" DOWN
 SET P.K./WASHER
 6/5/96
 FD P.K./WASHER
 9/28/09, 4/8/10
 SV119
 4/28/10, KPM
 SET MAG/WASHER
 FINREF141
 9/19/12, SDC
 FD P.K./WASHER
 REF141
 4/2/19
 9/13/19, JFO



O.D.O.T. DISTRICT 2 SURVEY OFFICE (USE ONLY)

PERSONNEL	REFERENCE NO. <u>141</u>	SHEET <u>25</u> OF <u>63</u>
NOTES <u>LUMBREZER</u>	DATE <u>5/6/12</u>	ROUTE <u>SR 163</u>
H.C. <u>FINTEL</u>	WEATHER <u>CLOUDY</u>	COUNTY <u>OTTAWA</u>
R.C. <u>LUMBREZER</u>	TEMP. <u>60°</u>	TOWNSHIP <u>DANBURY</u>
		SECTION <u>2-13</u>

TYPE MONUMENT P.K./WASHER
~~ON SURFACE~~ - BELOW 5"
 LEFT - ☉ PAV'T - RIGHT ON
12.7' TO LT EDGE PAVEMENT
 S.L.M. 1823+40
 Grid: Northing: 679650.659 Easting: 1894313.855



1983 RECORD
 P.I. Δ = 01° 35' RT. (PLAN)
 420+26.90
 IPIN 7 1/2" BELOW

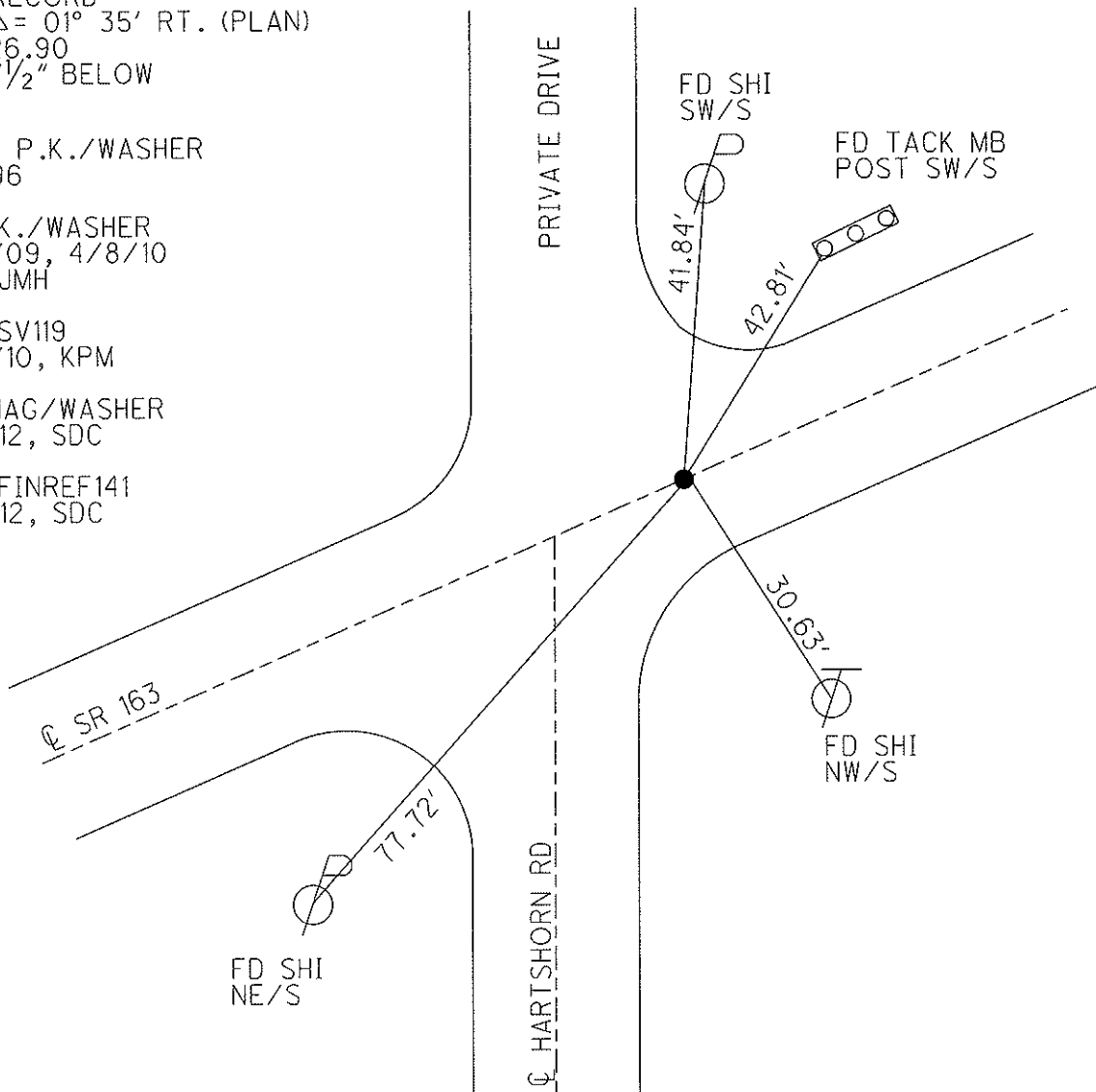
RESET P.K./WASHER
 6/5/96

FD P.K./WASHER
 9/28/09, 4/8/10
 KPM, JMH

GPS, SV119
 4/28/10, KPM

SET MAG/WASHER
 9/12/12, SDC

GPS, FINREF141
 9/19/12, SDC



O.D.O.T. DISTRICT 2 SURVEY OFFICE

PERSONNEL _____

REFERENCE NO. 141

SHEET 18 OF 52

NOTES CANTERBURY

H.C. LOEHRKE

R.C. ROUSOS

DATE 5-25-95

WEATHER CLOUDY / RAIN

TEMP. +60° F

ROUTE S.R. 163

COUNTY OTTAWA

TOWNSHIP DANBURY

SECTION _____

T. _____ R. _____

Set P.K. / WASHER

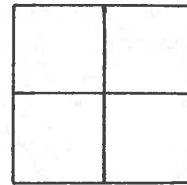
TYPE MONUMENT BOAT SPIKE 6-5-96

ON SURFACE - BELOW 5" DEEP

LEFT - E PAV'T. - RIGHT ON E

12.7' TO LT EDGE PAVEMENT

S.L.M. 1823 + 40



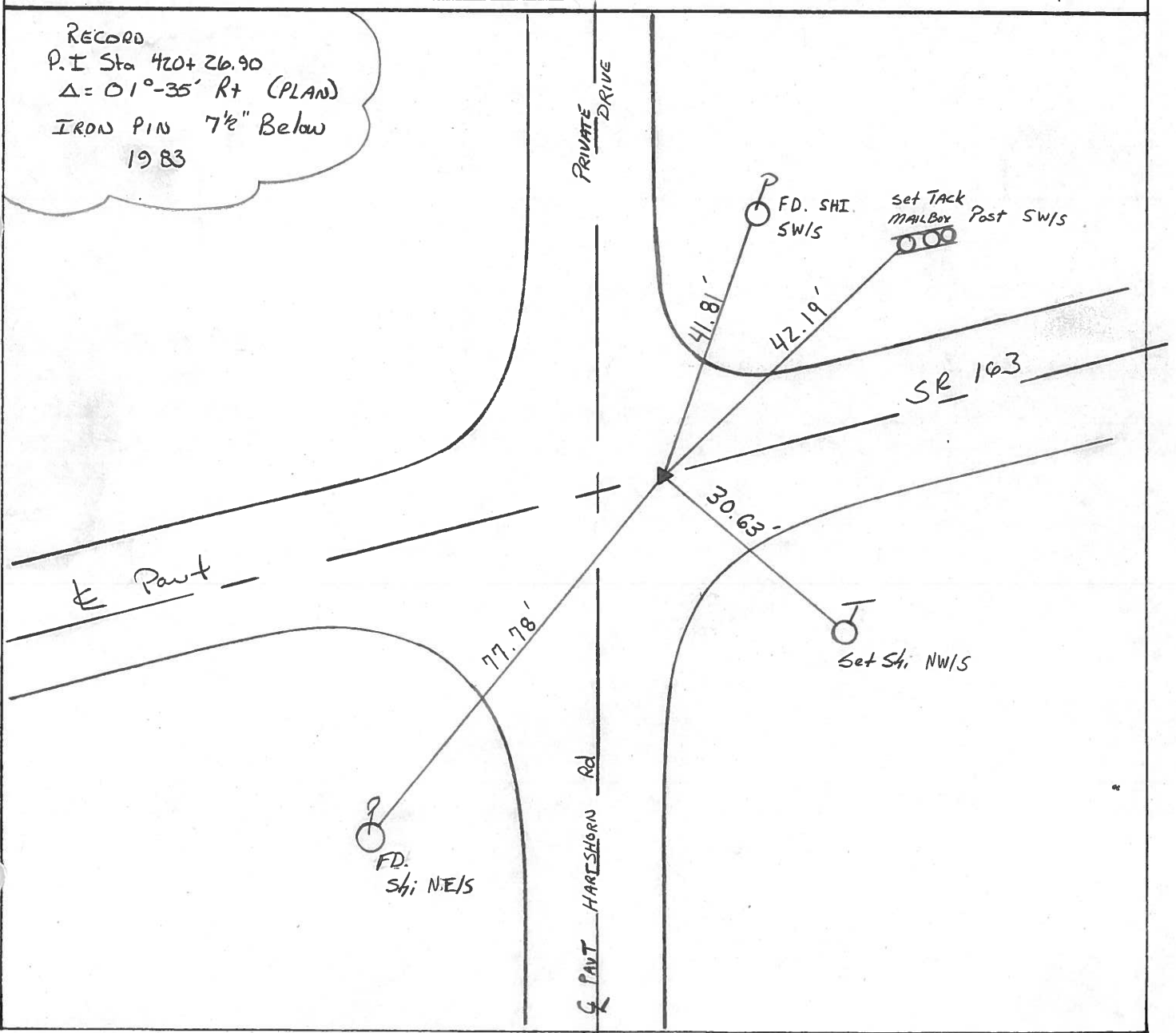
RECORD

P.I Sta 420+26.90

$\Delta = 01^\circ - 35'$ Rt (PLAN)

IRON PIN $7\frac{1}{2}''$ Below

1983



County Ottawa S.R. #163

Township Danbury

Section _____

T-N, R-E

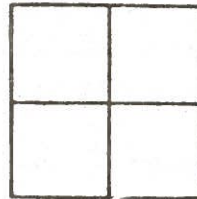
Personnel Cronin
Ripple
Geyman
Barbour

#141

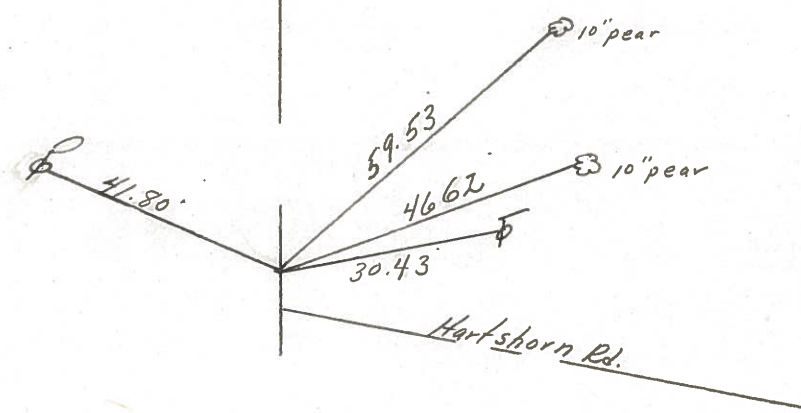
Date 12/15/83

Weather overcast - windy

Temp. 30°



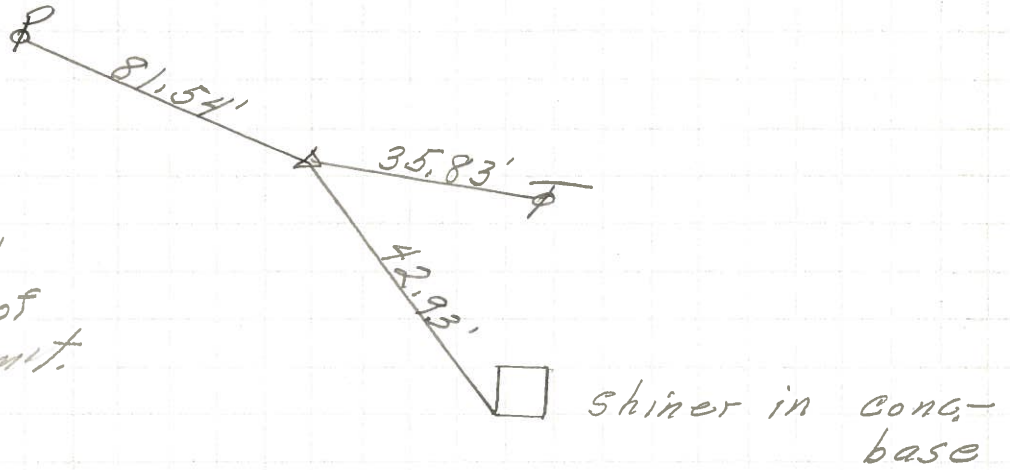
Plan
P.I. A = 01°35' Rt.
420 + 26.90
Fd. I. Pin 7 1/2' below surface
& Permit.



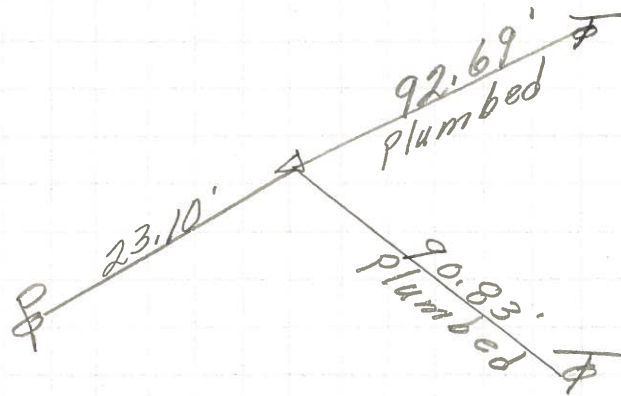
S.R. #1637

PERSONNEL	TITLE	PERSONNEL	TITLE
COUNTY <u>Ottawa</u> DATE <u>6-10-71</u>			
S. R. <u>163</u> WEATHER _____			
SEC. <u>1</u> TEMP. _____			
DESCRIPTION <u>S.R. # 269</u>		<u>East</u>	
	LEFT	CENTER LINE	RIGHT
JOB NO. _____			

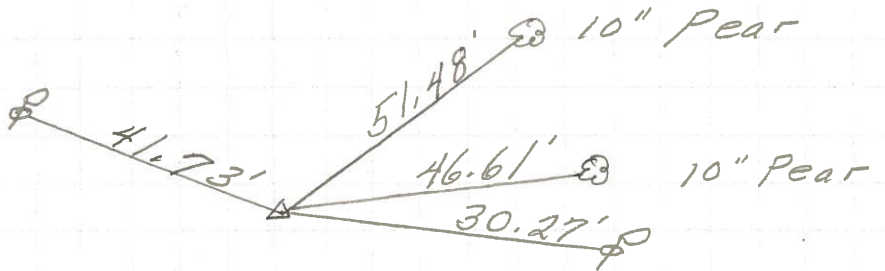
P.I. **(141B)**
 450+27.85
 Iron Pin
 All dist. Plumbed
 2" down - 14' Rt. of
 Rt. edge of Pavmit.



P.I. **(141A)**
 436+43.20
 P.K. Nail
 on Black top dr.



P.I. **(141)**
 420+26.90
 P.K. Nail



PERSONNEL	TITLE	PERSONNEL	TITLE	COUNTY	DATE
Schneider		Potts		Ottawa	9-10-68
Mosser				S. R.	163
Barbour				WEATHER	cloudy
Redding				SEC. S.R.#269 - East	TEMP. 70°
DESCRIPTION	Ties for Control Points				JOB NO.

