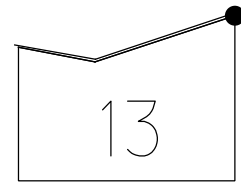


O.D.O.T. DISTRICT 2 SURVEY OFFICE (USE ONLY)

PERSONNEL \_\_\_\_\_ REFERENCE NO. 141 A SHEET 26 OF 63  
 NOTES MOSER DATE 5/6/11 ROUTE SR 163  
 H.C. MOSER WEATHER CLOUDY COUNTY OTTAWA  
 R.C. HARBAUGH TEMP. 60° TOWNSHIP DANBURY  
 SECTION 2-13  
 DWG BY NIESE PID 107060

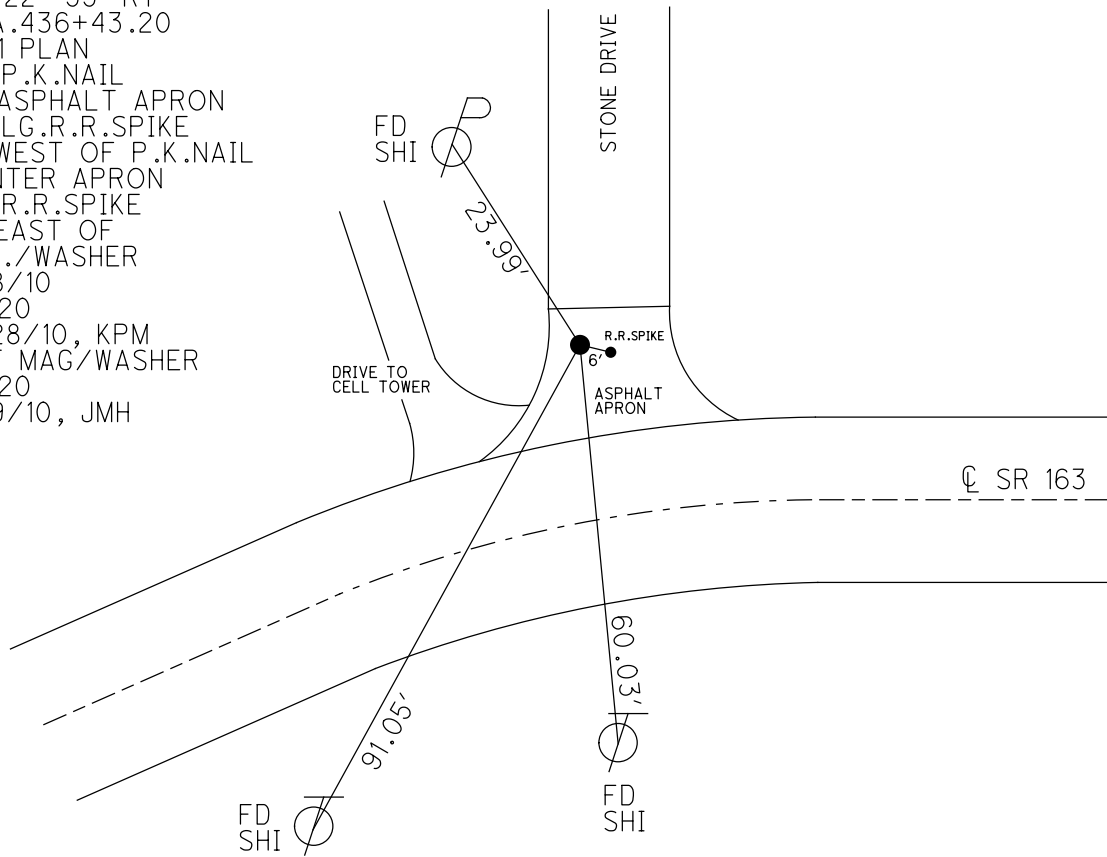
TYPE MONUMENT P.K./WASHER  
 ON SURFACE - ~~BELOW~~ ON \_\_\_\_\_  
 OFFSET  $\bar{C}$  PAVEMENT 30.2' LT : ~~RT~~  
 18' LT TO LT EDGE PAVEMENT  
 STATION: 1839+56.30

NOTE:  
 THIS MAP IS FOR ODOT PURPOSES ONLY.  
 TO INDEX REFERENCE TIES, AND DOES NOT  
 REPRESENT TRUE LAND SUBDIVISION.



HORZ.DATUM: \_\_\_\_\_ GEOID: \_\_\_\_\_  
 GRID: NORTHING: 680295.490 EASTING: 1895795.421

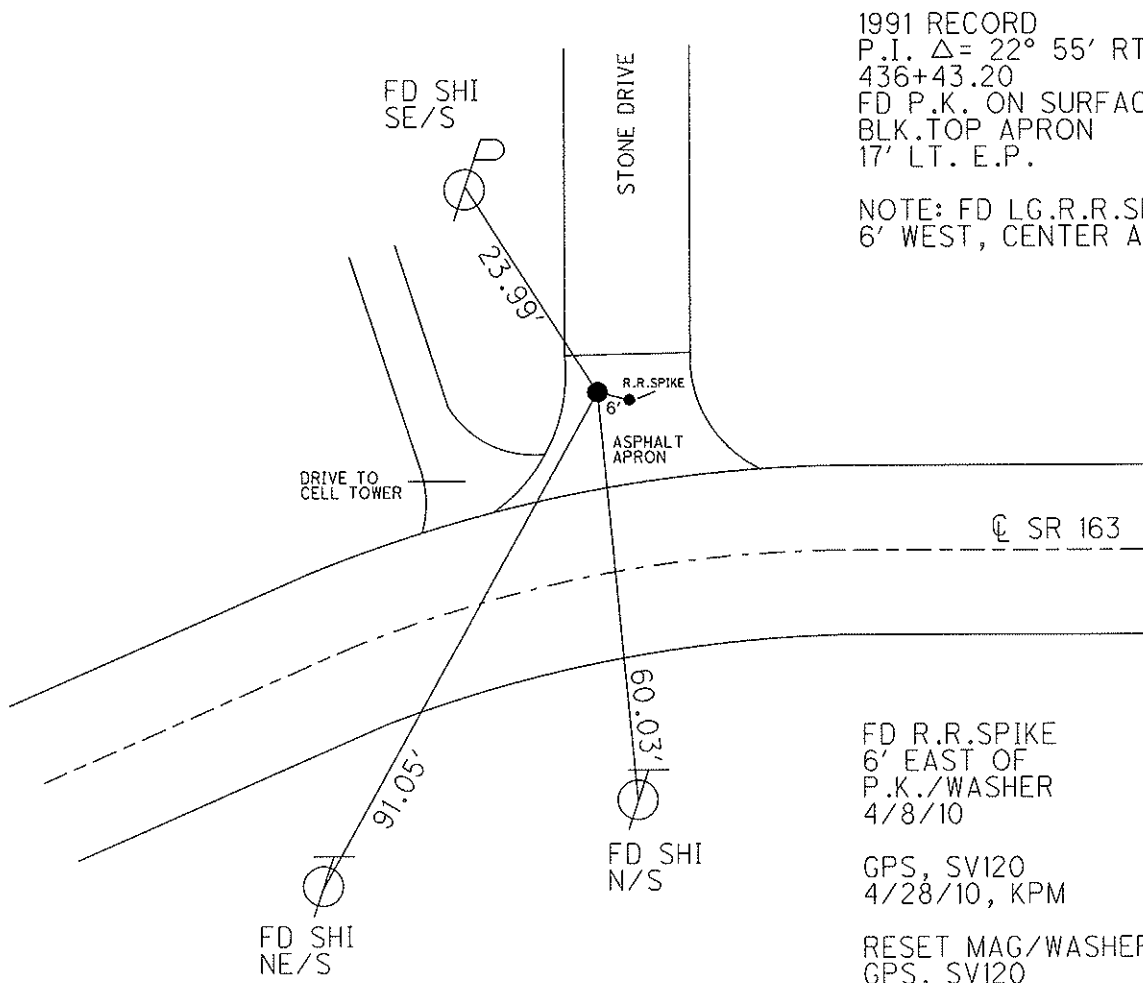
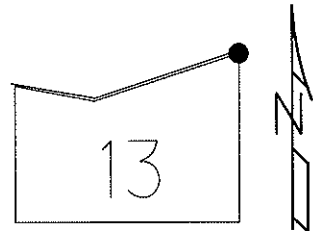
RECORD: P.I.  
 $\Delta = 22^\circ 55' RT$   
 STA. 436+43.20  
 1991 PLAN  
 FD P.K.NAIL  
 IN ASPHALT APRON  
 FD LG.R.R.SPIKE  
 6' WEST OF P.K.NAIL  
 CENTER APRON  
 FD R.R.SPIKE  
 6' EAST OF  
 P.K./WASHER  
 4/8/10  
 SV120  
 4/28/10, KPM  
 SET MAG/WASHER  
 SV120  
 9/9/10, JMH



O.D.O.T. DISTRICT 2 SURVEY OFFICE (USE ONLY)

PERSONNEL \_\_\_\_\_ REFERENCE NO. 141 A SHEET 26 OF 63  
 NOTES MOSER DATE 5/6/11 ROUTE SR 163  
 H.C. MOSER WEATHER CLOUDY COUNTY OTTAWA  
 R.C. HARBAUGH TEMP. 60° TOWNSHIP DANBURY  
 \_\_\_\_\_ SECTION 2-13  
 \_\_\_\_\_

TYPE MONUMENT P.K./WASHER  
 ON SURFACE - ~~BELOW~~ ON \_\_\_\_\_  
 LEFT - ☉ PAV'T - ~~RIGHT~~ 30.2'  
18' LT TO LT EDGE PAVEMENT  
 S.L.M. 1839+56.3  
 Grid: Northing: 680295.490 Easting: 1895795.421



1991 RECORD  
 P.I.  $\Delta = 22^\circ 55'$  RT. (PLAN)  
 436+43.20  
 FD P.K. ON SURFACE IN  
 BLK. TOP APRON  
 17' LT. E.P.

NOTE: FD LG.R.R. SPIKE  
 6' WEST, CENTER APRON

FD R.R. SPIKE  
 6' EAST OF  
 P.K./WASHER  
 4/8/10

GPS, SV120  
 4/28/10, KPM

RESET MAG/WASHER  
 GPS, SV120  
 9/9/10, JMH

# O.D.O.T. DISTRICT 2 SURVEY OFFICE

PERSONNEL

REFERENCE NO. 141 A

SHEET 19 OF 52

NOTES CANTERBURY

H.C. LOEHRKE

R.C. ROUSOS

DATE 5-25-95

WEATHER CLOUDY / RAIN

TEMP. +60° F

ROUTE S.R. 163

COUNTY OTTAWA

TOWNSHIP DANBURY

SECTION CONN. WEST RESERVE

T.      R.     

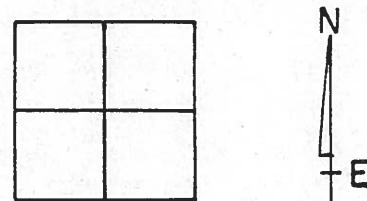
TYPE MONUMENT PK / WASHER

ON SURFACE - BELOW ON SURFACE

LEFT - CL. PAV'T. - RIGHT 30.2' LT CL

18 LT <sup>OF</sup> LT EDGE PAVEMENT

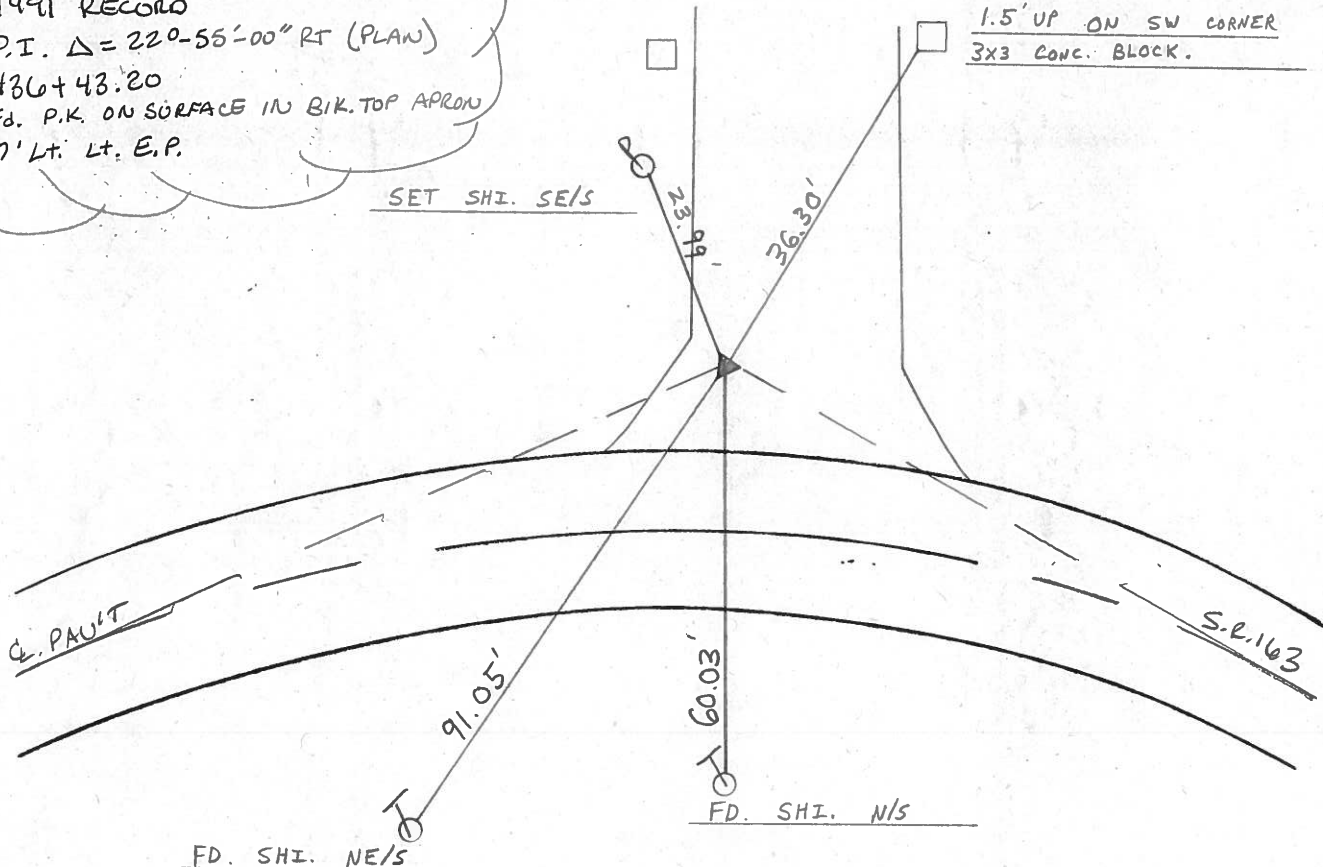
S.L.M. 1839 +



1991 RECORD  
 P.I.  $\Delta = 220-55-00''$  RT (PLAN)  
 436 + 43.20  
 FD. P.K. ON SURFACE IN BIK. TOP APRON  
 17' LT. LT. E.P.

SET SHI. SE/S

1.5' UP ON SW CORNER  
 3X3 CONC. BLOCK.



NOTE: FD. LG. RR SPIKE  $\pm 6'$  WEST, IN CENTER OF APRON.

O.D.O.T. DISTRICT 2 SURVEY OFFICE

PERSONNEL

REFERENCE NO. 141 A

SHEET 14 OF 15

NOTES RIPPLE

H.C. BARBOUR

DATE 2/26/91

ROUTE SR#163

R.C. Geyman

WEATHER SNOW

COUNTY OTTAWA

TEMP. 20°

TOWNSHIP DANBURY

SECTION -

T- - R- -

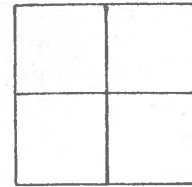
TYPE MONUMENT P.K. Nail

ON SURFACE - BELOW -

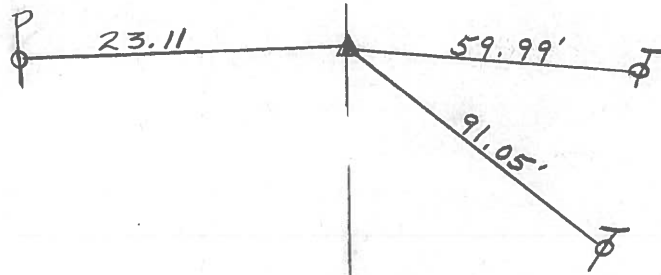
LEFT- & PAV'T. - RIGHT 17' LT. LT. E.P.

TO EDGE PAVEMENT

S.L.M. 34.8



PLAN  
P.I. Δ = 22° 55' RT.  
436 + 43.20  
Found P.K. ON SURFACE  
IN black Top Apron  
17' LT. LT. E.P.



SR #163

County Ottawa S.R. #163

Date 11/22/83

Township Danbury

Weather sunny

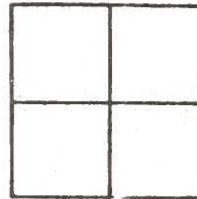
Section —

Temp. 46°

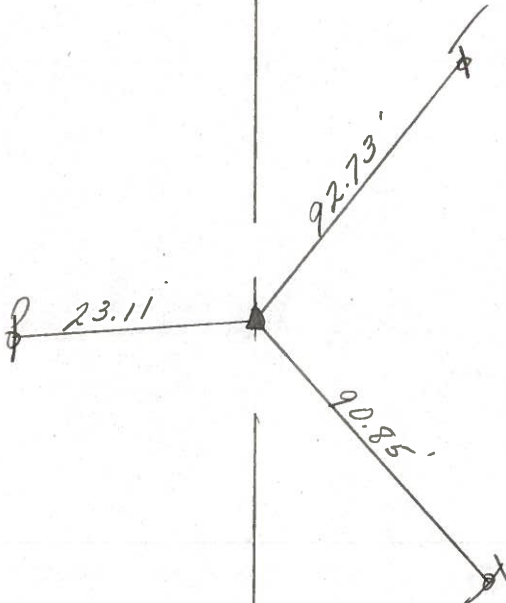
T-N, R-E

Personnel Cronin  
Ripple  
Geyman  
Barbour

141A



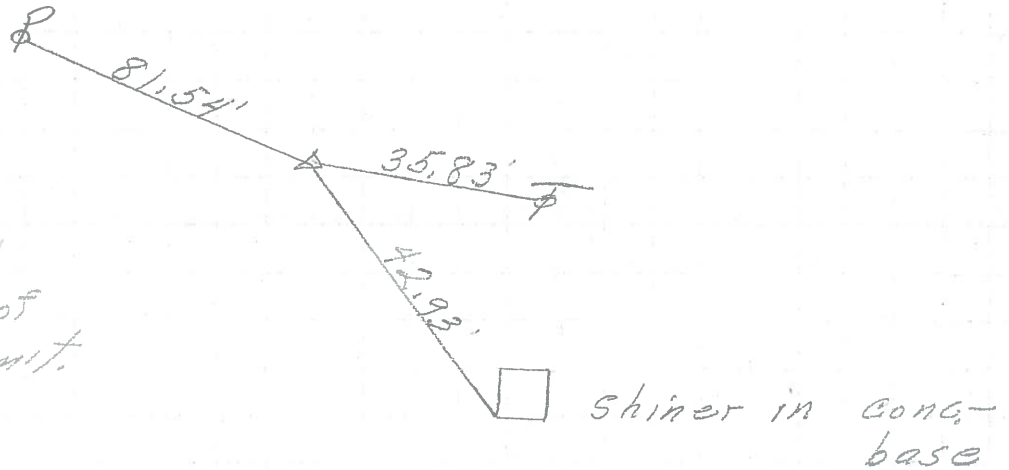
Plan  
P.I.  $\Delta = 22.55$  Rt.  
436 + 43.20  
Fd. P.K. on surface in  
blacktop Apron. 17' Lt. Lt. E.P.



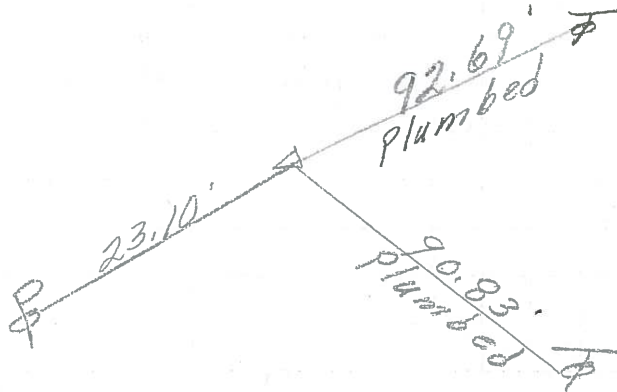
S.R. #163

PERSONNEL	TITLE	PERSONNEL	TITLE	COUNTY	DATE
				Ottawa	6-10-71
				S. R. 163	WEATHER
				SEC. 1	TEMP.
DESCRIPTION	S.R. #269	East			JOB NO.
	LEFT	CENTER LINE	RIGHT		

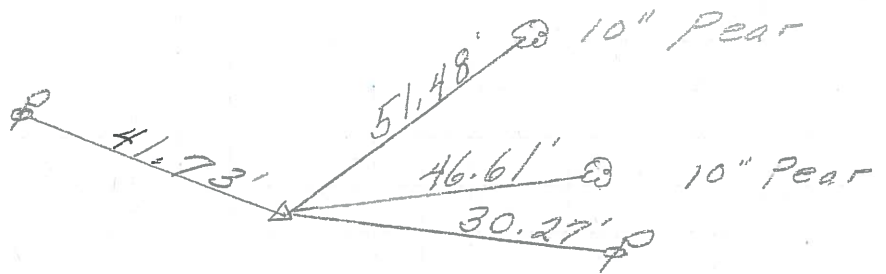
P.I. **(141B)**  
 450+27.85  
 Iron Pin  
 All dist. Plumbed  
 2" down - 14' Rt. of  
 Rt. edge of Pavmit.



P.I. **(141A)**  
 436+43.20  
 P.K. Nail  
 on Black top dr.



P.I. **(141)**  
 420+26.90  
 P.K. Nail



PERSONNEL	TITLE	PERSONNEL	TITLE	COUNTY	DATE
Schneider		Potts		OTT	9/1
Mosser				S. R.	WEATHER
Barbour				SEC. R	East
Redding					TEMP.

DESCRIPTION Ties for Control P in 5 JOB NO.

