

O.D.O.T. DISTRICT 2 SURVEY OFFICE (USE ONLY)

PERSONNEL

REFERENCE NO. 142

SHEET 29 OF 66

NOTES MOSER
 H.C. MOSER
 R.C. HARBAUGH

DATE 5/6/11
 WEATHER CLOUDY
 TEMP. 60°

ROUTE SR 163
 COUNTY OTTAWA
 TOWNSHIP DANBURY
 SECTION 1-9

DWG BY NIESE PID 107060

TYPE MONUMENT P.K./WASHER

ON SURFACE - ~~BELOW~~ ON

OFFSET ☉ PAVEMENT 3.5' ± : RT

7.5' TO RT EDGE PAVEMENT

STATION: 1867+95

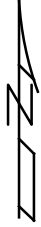
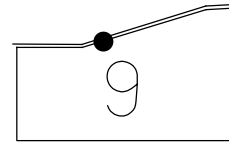
HORIZ.DATUM: NAD83(2011)

GEOID: 2012A

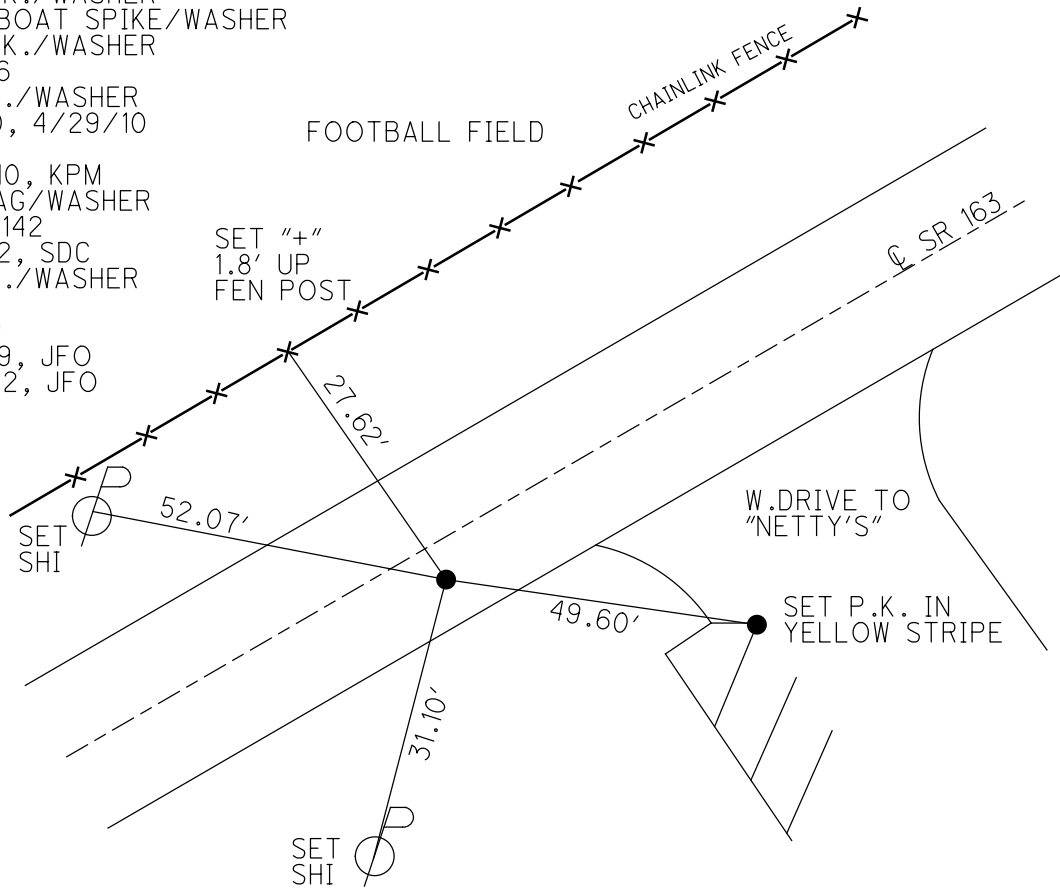
GRID: NORTHING: 680895.344

EASTING: 1898506.679

NOTE:
THIS MAP IS FOR ODOT PURPOSES ONLY.
TO INDEX REFERENCE TIES, AND DOES NOT
REPRESENT TRUE LAND SUBDIVISION.



RECORD: P.I.
 $\Delta = 04^\circ 02' LT$
 STA. 464+76.03
 1983 PLAN
 SET P.K./WASHER
 ATOP BOAT SPIKE/WASHER
 SET P.K./WASHER
 6/5/96
 FD P.K./WASHER
 4/8/10, 4/29/10
 SV123
 4/29/10, KPM
 SET MAG/WASHER
 FINREF142
 9/19/12, SDC
 FD P.K./WASHER
 REF142
 4/2/19
 9/13/19, JFO
 4/21/22, JFO



O.D.O.T. DISTRICT 2 SURVEY OFFICE (USE ONLY)

PERSONNEL

REFERENCE NO. 142

SHEET 29 OF 63

NOTES MOSER DATE 5/6/11
 H.C. MOSER WEATHER CLOUDY
 R.C. HARBAUGH TEMP. 60°

ROUTE SR 163
 COUNTY OTTAWA
 TOWNSHIP DANBURY
 SECTION 1-9

DWG BY NIESE PID 107060

TYPE MONUMENT P.K./WASHER

ON SURFACE - ~~BELOW~~ ON

OFFSET ϕ PAVEMENT 3.5' ~~LT~~ : RT

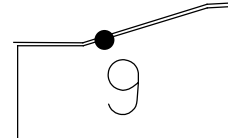
7.5' TO RT EDGE PAVEMENT

STATION: 1867+95

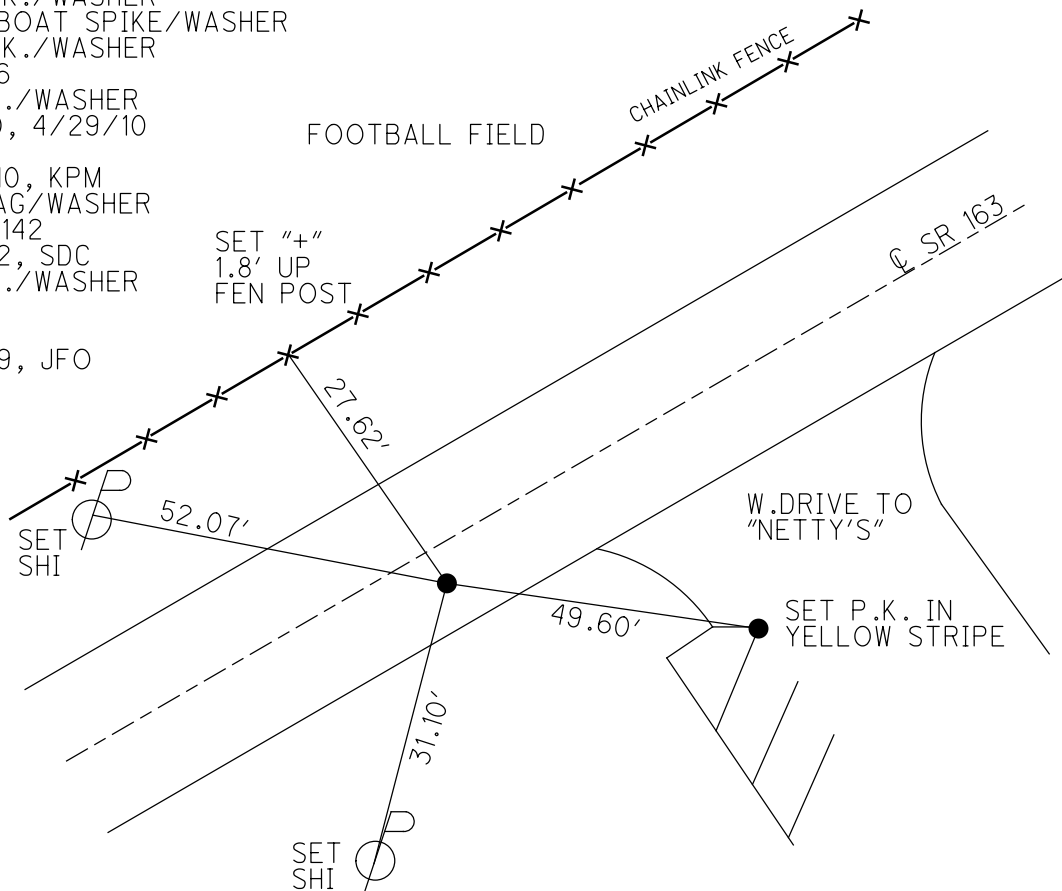
HORZ.DATUM: NAD83(2011) GEOID: 2012A

GRID: NORTHING: 680895.344 EASTING: 1898506.679

NOTE:
 THIS MAP IS FOR ODOT PURPOSES ONLY
 TO INDEX REFERENCE TIES, AND DOES NOT
 REPRESENT TRUE LAND SUBDIVISION.



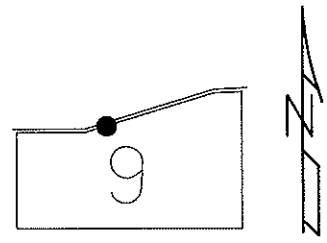
RECORD: P.I.
 $\Delta = 04^{\circ} 02' LT$
 STA. 464+76.03
 1983 PLAN
 SET P.K./WASHER
 ATOP BOAT SPIKE/WASHER
 SET P.K./WASHER
 6/5/96
 FD P.K./WASHER
 4/8/10, 4/29/10
 SV123
 4/29/10, KPM
 SET MAG/WASHER
 FINREF142
 9/19/12, SDC
 FD P.K./WASHER
 REF142
 4/2/19
 9/13/19, JFO



O.D.O.T. DISTRICT 2 SURVEY OFFICE (USE ONLY)

PERSONNEL	REFERENCE NO. <u>142</u>	SHEET <u>29</u> OF <u>63</u>
NOTES <u>MOSER</u>	DATE <u>5/6/11</u>	ROUTE <u>SR 163</u>
H.C. <u>MOSER</u>	WEATHER <u>CLOUDY</u>	COUNTY <u>OTTAWA</u>
R.C. <u>HARBAUGH</u>	TEMP. <u>60°</u>	TOWNSHIP <u>DANBURY</u>
		SECTION <u>1-9</u>

TYPE MONUMENT P.K./WASHER
 ON SURFACE - ~~BELOW~~ ON
~~LEFT~~ - Q PAV'T - RIGHT 3.5'
7.5' TO RT EDGE PAVEMENT
 S.L.M. 1867+95
 Grid: Northing: 680895.280 Easting: 1898506.599



RESET P.K./WASHER
6/5/96

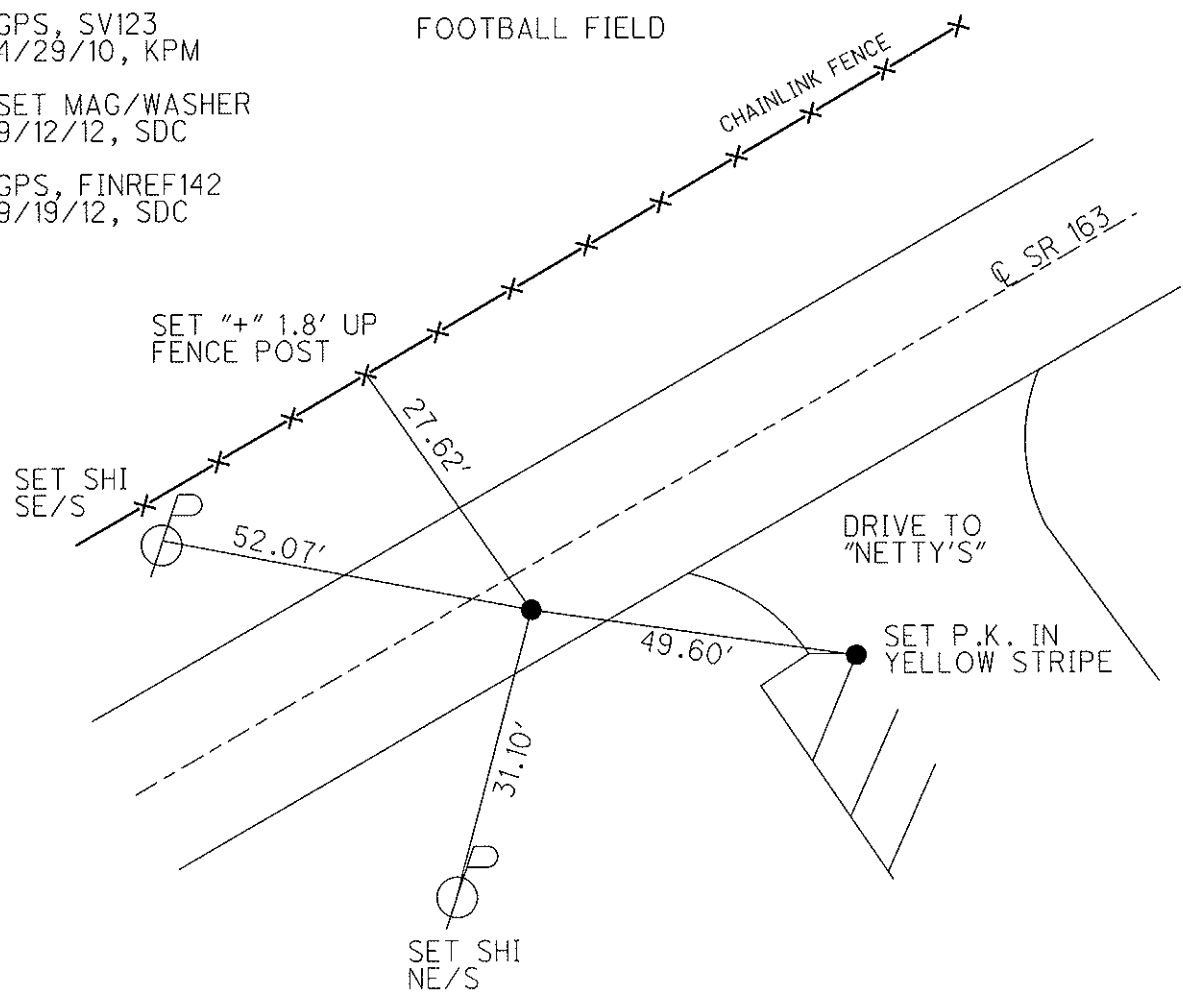
FD P.K./WASHER
4/8/10, 4/29/10
JMH, KPM

GPS, SV123
4/29/10, KPM

SET MAG/WASHER
9/12/12, SDC

GPS, FINREF142
9/19/12, SDC

1983 RECORD
 P.I. Δ = 04° 02' LT. (PLAN)
 464+76.03
 SET P.K./WASHER ATOP
 BOAT SPIKE/WASHER
 4' RT. Q PAV'T



O.D.O.T. DISTRICT 2 SURVEY OFFICE

PERSONNEL

REFERENCE NO. 142

SHEET 22 OF 52

NOTES CANTERBURY

H.C. LOEHRKE

R.C. ROUSOS

DATE 5-25-95

WEATHER CLOUDY

TEMP. +60° F

ROUTE S.R. 163

COUNTY OTTAWA

TOWNSHIP DAVBURY

SECTION COUN. WEST. RESERVE

T. R.

Reset

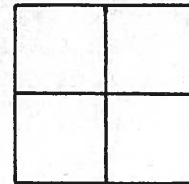
TYPE MONUMENT PK NAIL/WASHER 6-5-96

ON SURFACE - BELOW ON SURFACE

LEFT - ℄ PAU'T. - RIGHT 4.0' RT ℄

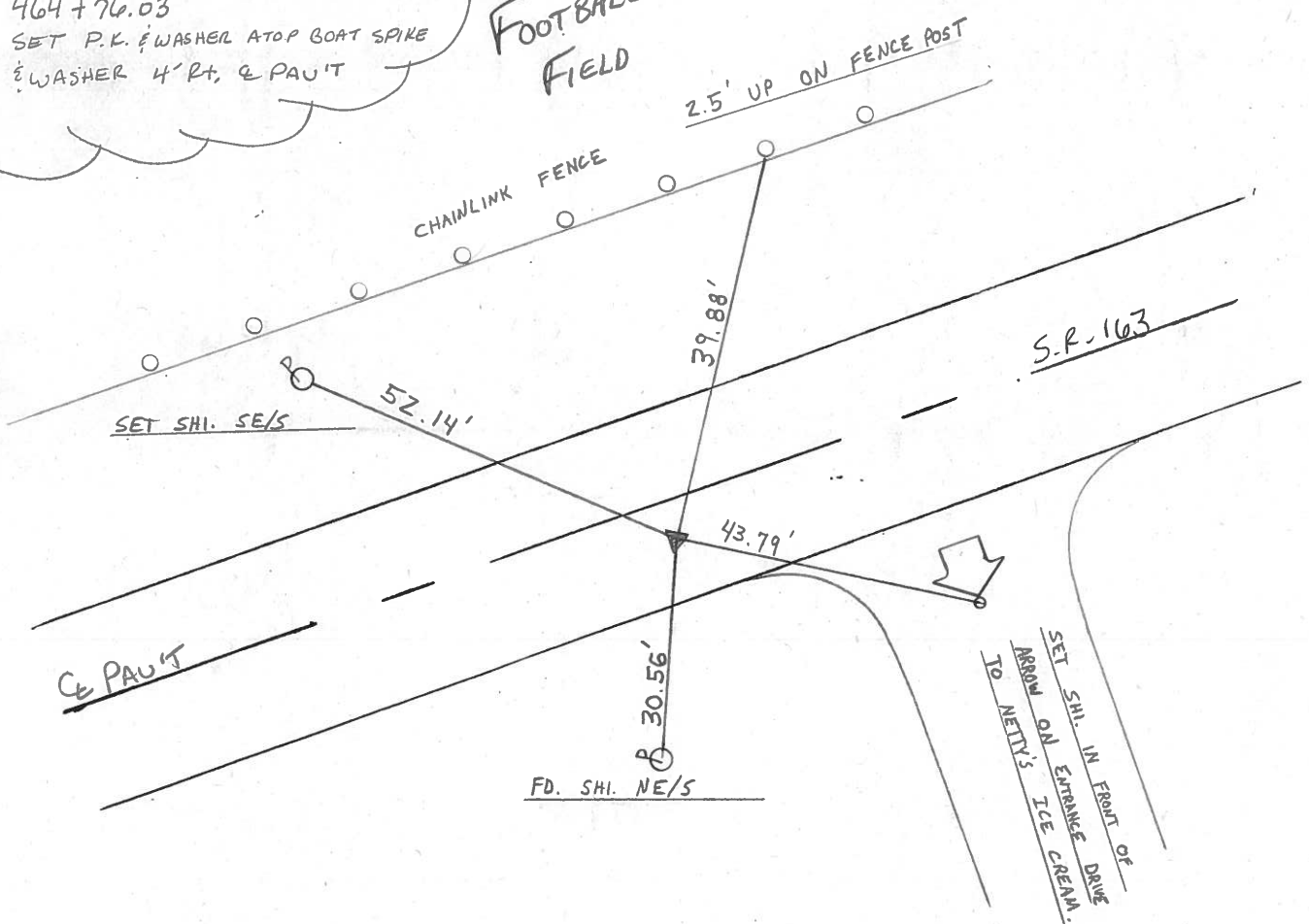
7.6' TO RT EDGE PAVEMENT

S.L.M. 1867 + 95



1983 RECORD
 P.I. $\Delta = 04^{\circ} - 02' - 00''$ Lt. (PLAW)
 464 + 76.03
 SET P.K. & WASHER ATOP GOAT SPIKE
 & WASHER 4' RT, & PAU'T

FOOTBALL FIELD



County Ottawa S.R. #163

Date 11/22/83

Township Danbury

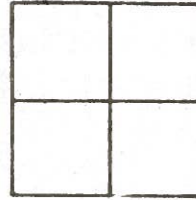
Weather sunny

Section _____

Temp. 50°

T-N, R-E

Personnel Cronin

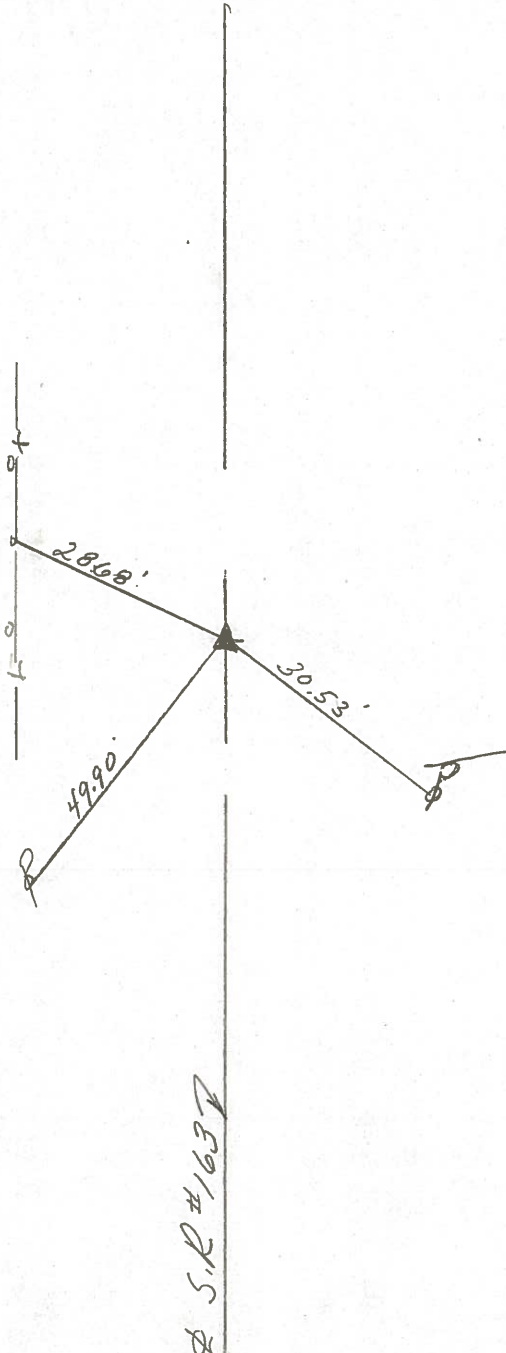


Ripple

Geyman

Barbour

142



Plan
P.I. Δ = 04° 02' Lt.
464 + 76.03
Set P.K. & washer
atop boat spike &
washer 4' Rt. & Paint.

♀ S.R. #163 ♀

PERSONNEL TITLE PERSONNEL TITLE

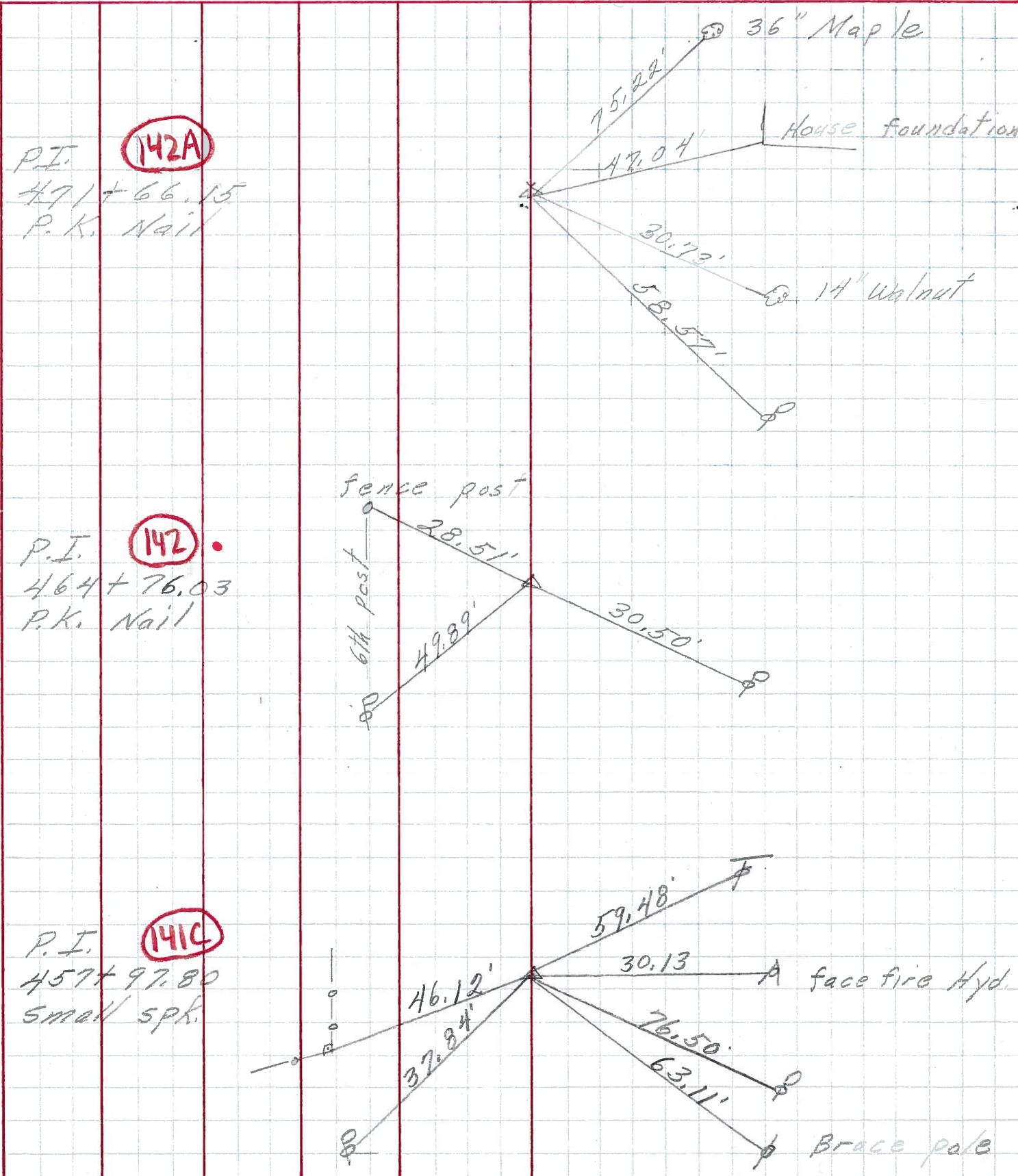
COUNTY Ottawa DATE 6-10-71

S. R. 163 WEATHER

SEC. 1 TEMP.

DESCRIPTION S.R. # 269 East JOB NO.

LEFT CENTER LINE RIGHT



PERSONNEL	TITLE	PERSONNEL	TITLE	COUNTY	DATE
Schneider		Potts		Ottawa	9-10-68
Mosser				S. R. 163	WEATHER Cloudy
Barbour				SEC. S.R. #269 - East	TEMP. 70'
Redding					

DESCRIPTION Ties for Control Points JOB NO. _____

