

O.D.O.T. DISTRICT 2 SURVEY OFFICE (USE ONLY)

PERSONNEL

REFERENCE NO. 142 A

SHEET 30 OF 66

NOTES MOSER DATE 5/6/11
 H.C. MOSER WEATHER CLOUDY
 R.C. HARBAUGH TEMP. 69°

ROUTE SR 163
 COUNTY OTTAWA
 TOWNSHIP DANBURY
 SECTION 1-9

DWG BY NIESE PID 107060

TYPE MONUMENT P.K./WASHER

ON SURFACE - ~~BELOW~~ ON

OFFSET C PAVEMENT 3.0' LT : ~~RT~~

8.6' TO LT EDGE PAVEMENT

STATION: 1874+86

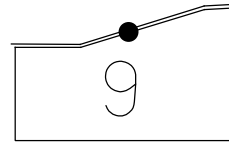
HORZ.DATUM: NAD83(2011)

GEOID: 2012A

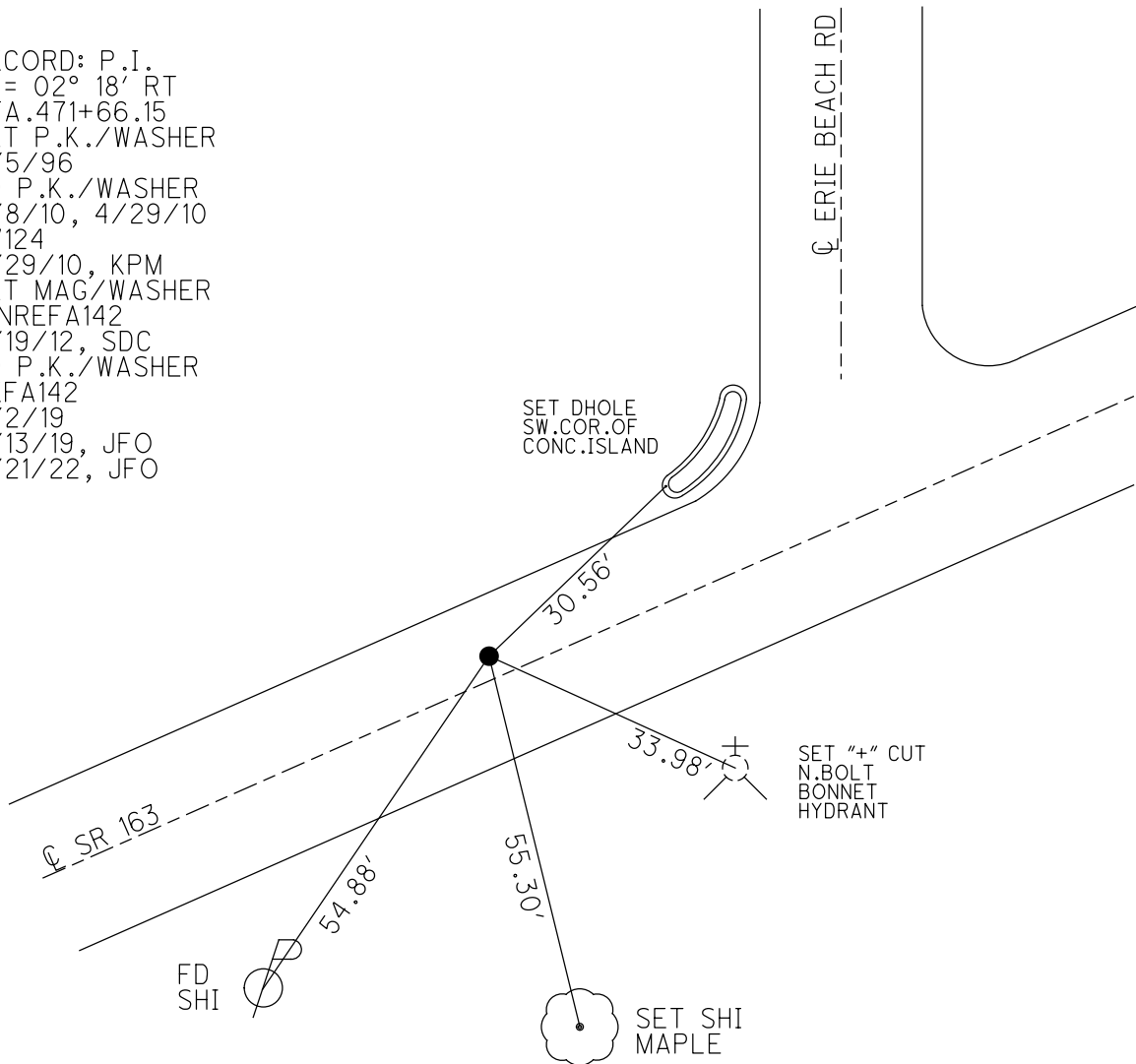
GRID: NORTHING: 681248.486

EASTING: 1899099.074

NOTE:
 THIS MAP IS FOR ODOT PURPOSES ONLY
 TO INDEX REFERENCE TIES, AND DOES NOT
 REPRESENT TRUE LAND SUBDIVISION.



RECORD: P.I.
 $\Delta = 02^\circ 18' \text{ RT}$
 STA. 471+66.15
 SET P.K./WASHER
6/5/96
 FD P.K./WASHER
4/8/10, 4/29/10
 SV124
4/29/10, KPM
 SET MAG/WASHER
 FINREFA142
9/19/12, SDC
 FD P.K./WASHER
 REFA142
4/2/19
9/13/19, JFO
4/21/22, JFO



O.D.O.T. DISTRICT 2 SURVEY OFFICE (USE ONLY)

PERSONNEL _____ REFERENCE NO. 142 A SHEET 30 OF 63
 NOTES MOSER DATE 5/6/11 ROUTE SR 163
 H.C. MOSER WEATHER CLOUDY COUNTY OTTAWA
 R.C. HARBAUGH TEMP. 69° TOWNSHIP DANBURY
 DWG BY NIESE PID 107060 SECTION 1-9

TYPE MONUMENT P.K./WASHER

ON SURFACE - ~~BELOW~~ ON _____

OFFSET C PAVEMENT 3.0' LT : ~~RT~~

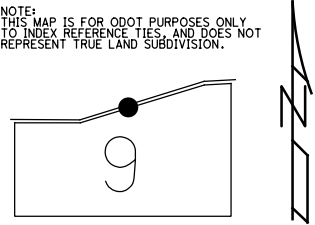
8.6' TO LT EDGE PAVEMENT

STATION: 1874+86

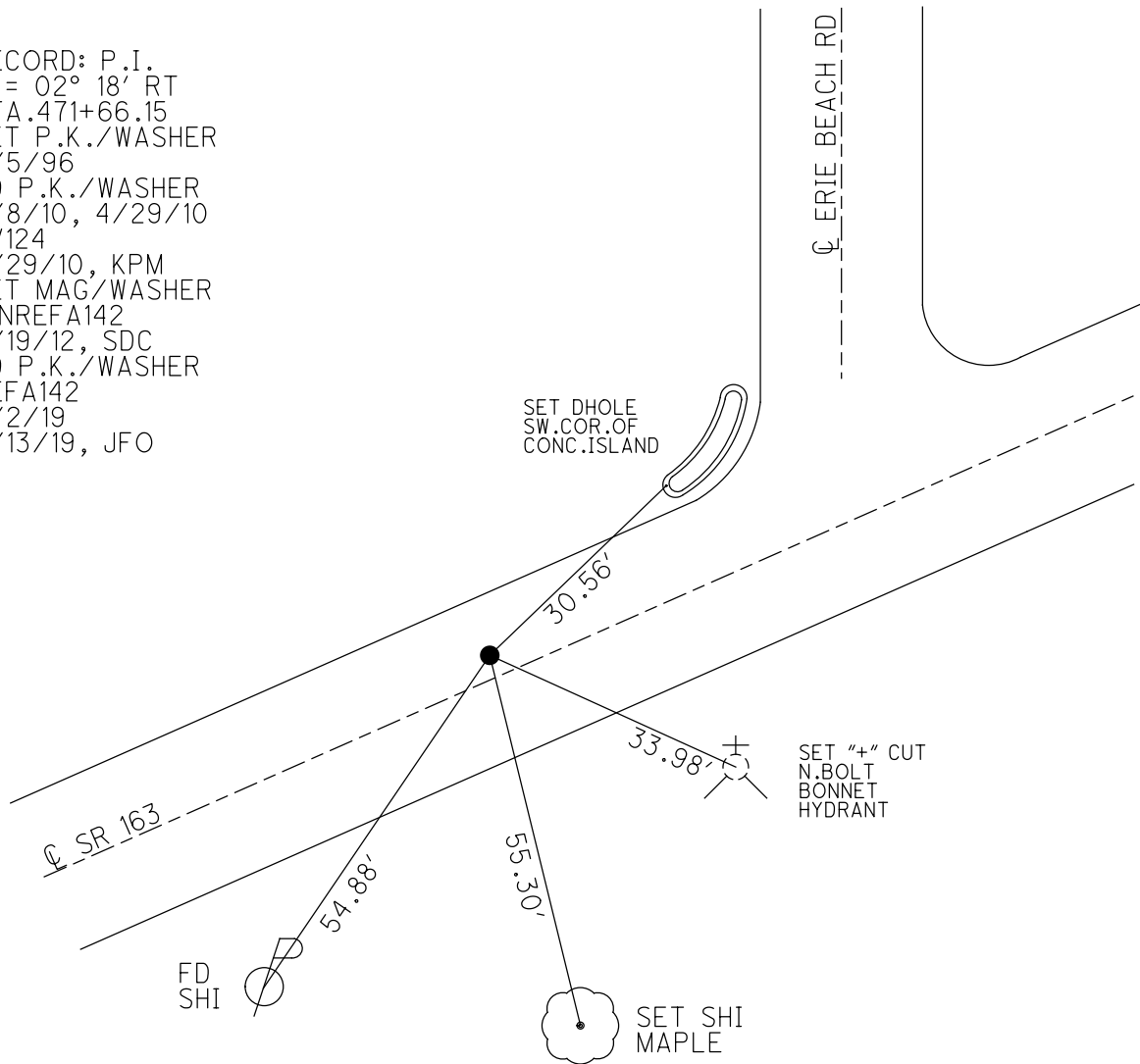
HORIZ.DATUM: NAD83(2011) GEOID: 2012A

GRID: NORTHING: 681248.486 EASTING: 1899099.074

NOTE:
THIS MAP IS FOR ODOT PURPOSES ONLY
TO INDEX REFERENCE TIES, AND DOES NOT
REPRESENT TRUE LAND SUBDIVISION.



RECORD: P.I.
 $\Delta = 02^\circ 18' \text{ RT}$
 STA. 471+66.15
 SET P.K./WASHER
 6/5/96
 FD P.K./WASHER
 4/8/10, 4/29/10
 SV124
 4/29/10, KPM
 SET MAG/WASHER
 FINREFA142
 9/19/12, SDC
 FD P.K./WASHER
 REFA142
 4/2/19
 9/13/19, JFO



O.D.O.T. DISTRICT 2 SURVEY OFFICE (USE ONLY)

PERSONNEL

REFERENCE NO. 142 A

SHEET 30 OF 63

NOTES MOSER

DATE 5/6/11

ROUTE SR 163

H.C. MOSER

WEATHER CLOUDY

COUNTY OTTAWA

R.C. HARBAUGH

TEMP. 69°

TOWNSHIP DANBURY

SECTION 1-9

TYPE MONUMENT P.K./WASHER

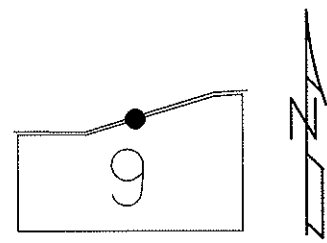
ON SURFACE - ~~BELOW~~ ON

LEFT - Q PAV'T - ~~RIGHT~~ 3'

8.6' TO LT EDGE PAVEMENT

S.L.M. 1874+86

Grid: Northing: 681248.452 Easting: 1899098.979



RECORD:
P.I. $\Delta = 02^\circ 18' RT.$
471+66.15

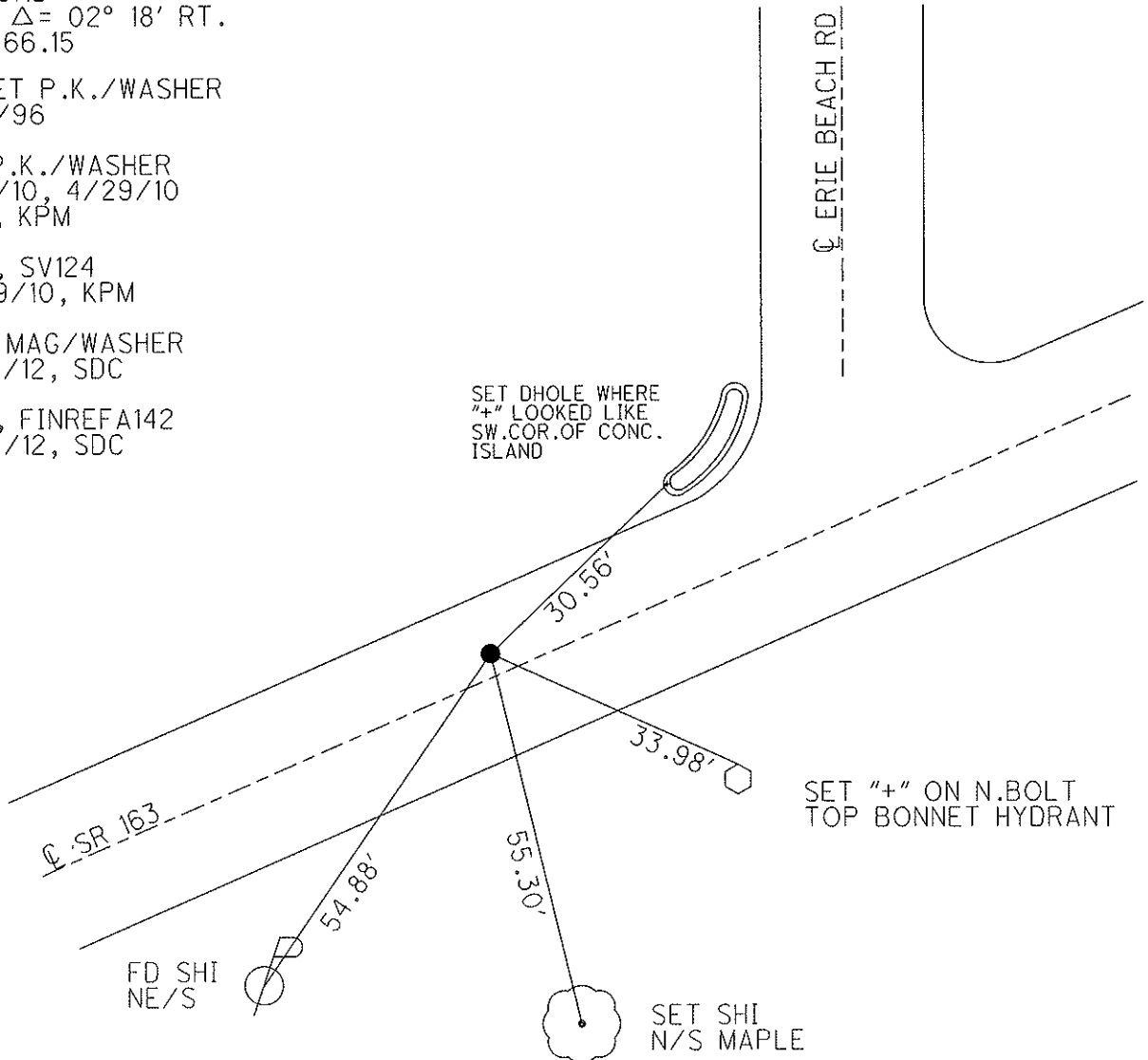
RESET P.K./WASHER
6/5/96

FD P.K./WASHER
4/8/10, 4/29/10
JMH, KPM

GPS, SV124
4/29/10, KPM

SET MAG/WASHER
9/12/12, SDC

GPS, FINREFA142
9/19/12, SDC



O.D.O.T. DISTRICT 2 SURVEY OFFICE

PERSONNEL _____

REFERENCE NO. 142 A

SHEET 23 OF 52

NOTES CANTERBURY

H.C. LOEHRKE

R.C. ROUSOS

DATE 5-30-95

WEATHER CLOUDY

TEMP. +64° F

ROUTE S.R. 163

COUNTY OTTAWA

TOWNSHIP DANBURY

SECTION _____

T _____ R _____

Reset

TYPE MONUMENT PK NAIL / WASHER

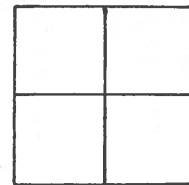
6-5-96

ON SURFACE - ~~BELOW~~ ON SURFACE

LEFT- & PAV'T. - RIGHT 2.0' LT &

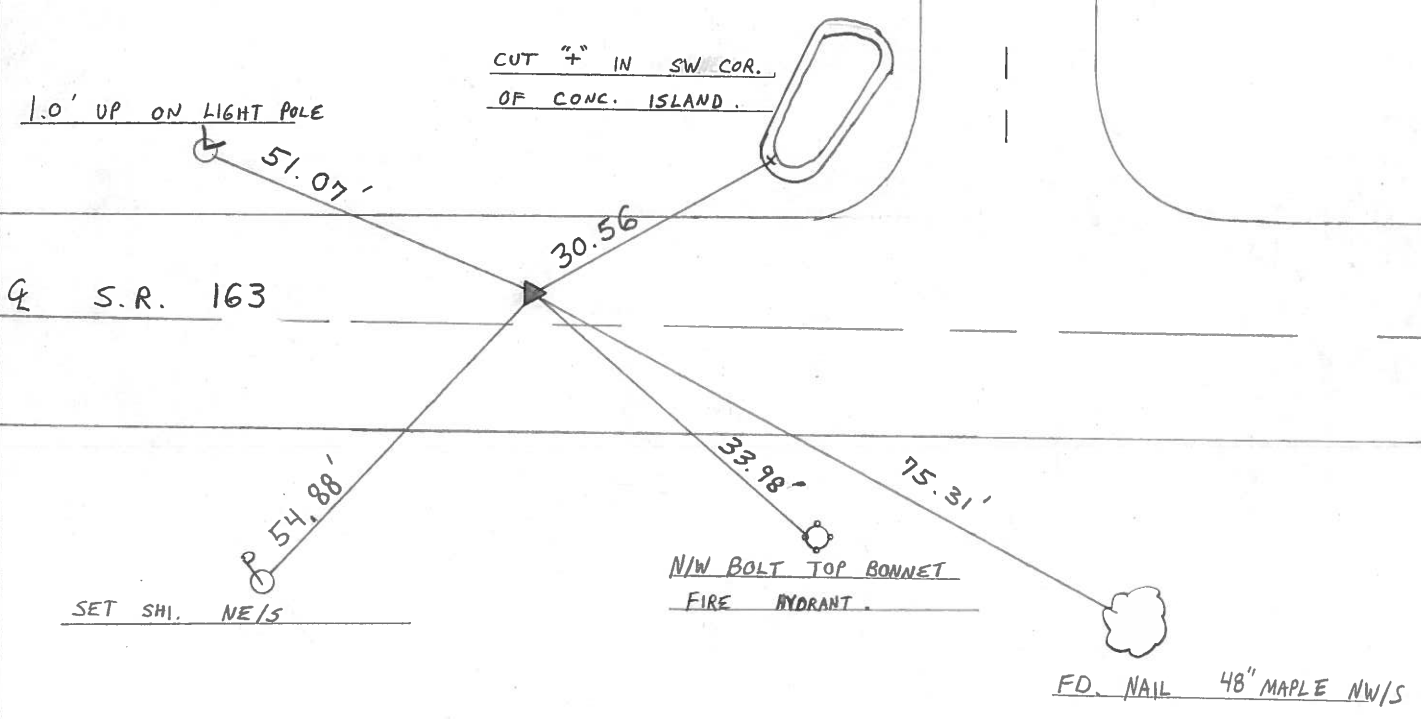
9.0' TO LT EDGE PAVEMENT

S.L.M. 1874 +86



RECORD: P.I. $\blacktriangle = 02^\circ 18' \text{ Rt.}$
 STA 471. + 66.15

ERIE BEACH RD.



County Ottawa S.R. #163

Date 11/22/83

Township Danbury

Weather sunny

Section

Temp. 50°

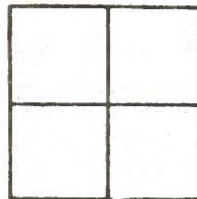
T-N, R-E

Personnel Cronin

Ripple

Geymen

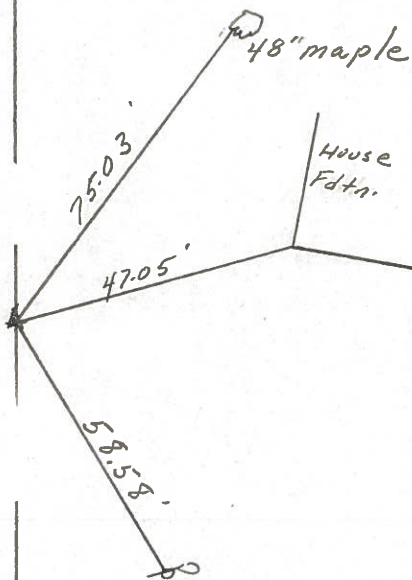
Barbour



142 A



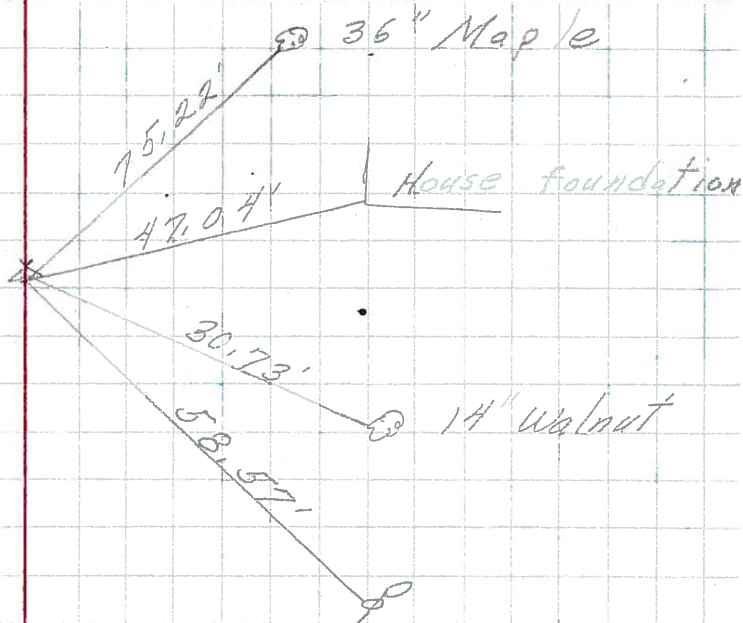
P.I. 1=02°18' Rt.
471+66.15
set P.K. washer at top
P.K. 2.5' Lt. & Point



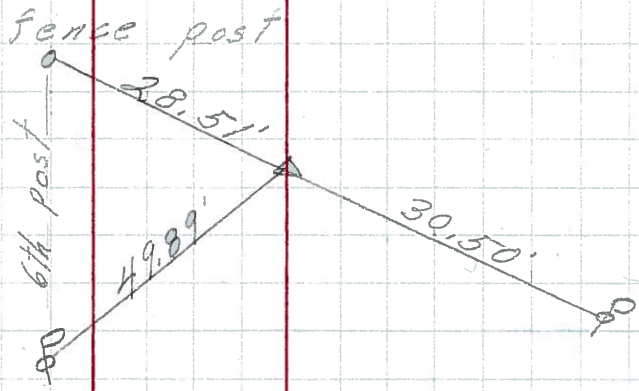
S.S.R. #637

PERSONNEL	TITLE	PERSONNEL	TITLE	COUNTY	DATE
				Ottawa	6-10-71
				S. R. 163	WEATHER
				SEC. 1	TEMP.
DESCRIPTION				S. R. # 269	East
	LEFT	CENTER LINE	RIGHT	JOB NO.	

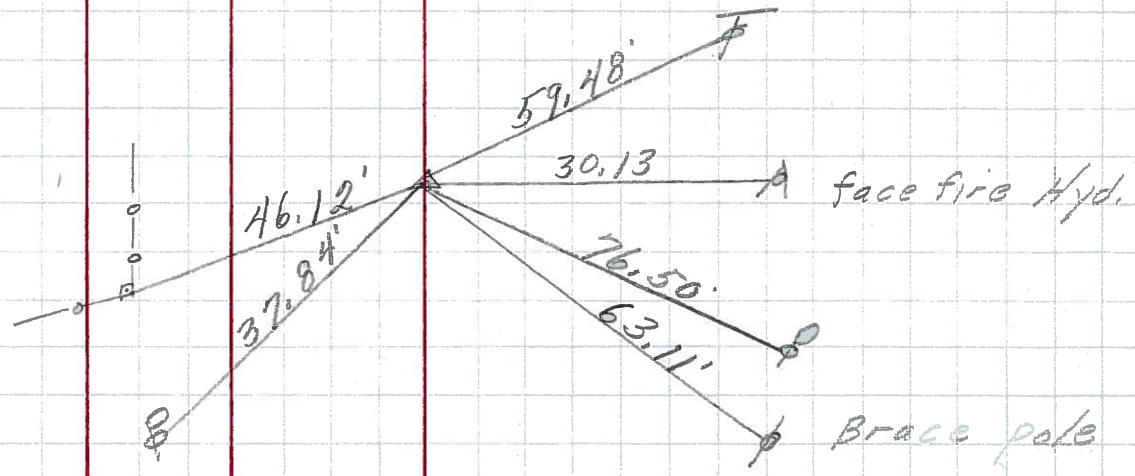
P.I. **(142A)**
 471 + 66.15
 P.K. Nail



P.I. **(142)**
 464 + 76.03
 P.K. Nail



P.I. **(141C)**
 457 + 97.80
 small spk.



PERSONNEL	TITLE	PERSONNEL	TITLE	COUNTY	DATE
Schneider		Potts		Ottawa	9-10-68
Mosser				S. R. 163	WEATHER Cloudy
Barbour				SEC. S.R. #269 - East	TEMP. 70'
Redding					

DESCRIPTION Ties for Control Points JOB NO. _____

