

O.D.O.T. DISTRICT 2 SURVEY OFFICE (USE ONLY)

PERSONNEL _____ REFERENCE NO. 142 B SHEET 31 OF 66
 NOTES MOSER DATE 5/6/11 ROUTE SR 163
 H.C. MOSER WEATHER CLOUDY COUNTY OTTAWA
 R.C. HARBAUGH TEMP. 60° TOWNSHIP DANBURY
 SECTION 1-9

DWG BY NIESE PID 107060

TYPE MONUMENT P.K./WASHER

ON SURFACE - ~~BELOW~~ ON

OFFSET 0.6' LT : RT

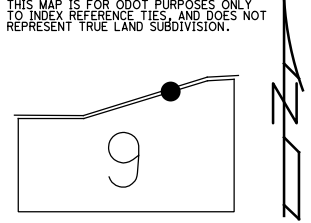
10.2' TO RT EDGE PAVEMENT

STATION: 1880+27

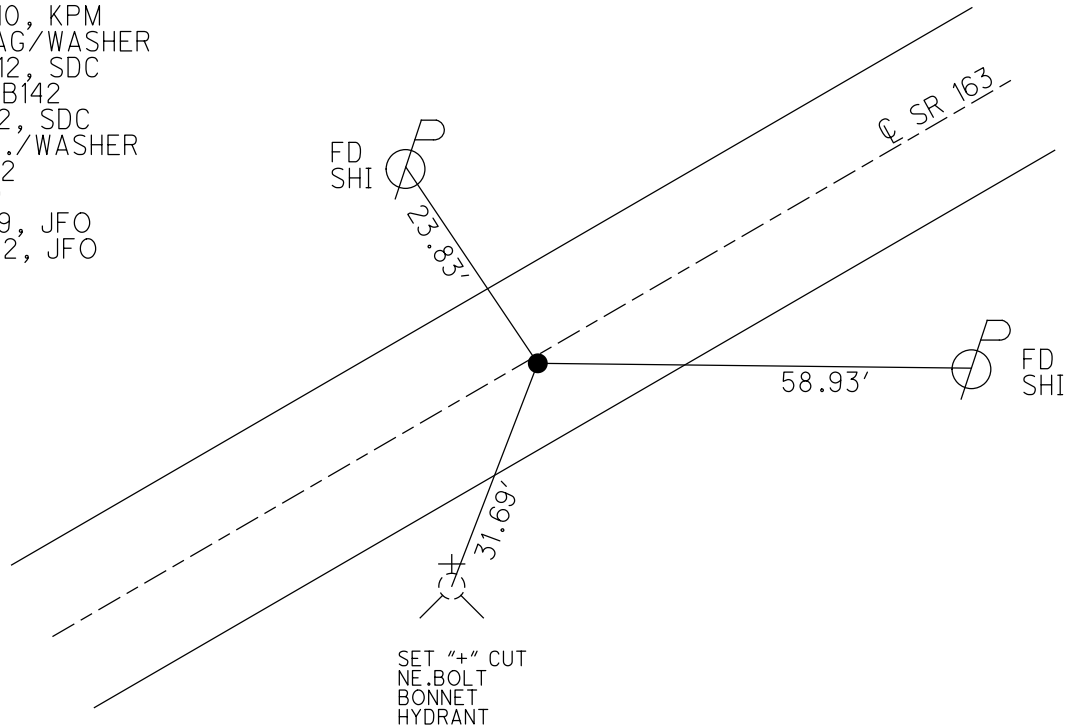
HORZ.DATUM: NAD83(2011) GEOID: 2012A

GRID: NORTHING: 681505.025 EASTING: 1899571.754

NOTE:
THIS MAP IS FOR ODOT PURPOSES ONLY
TO INDEX REFERENCE TIES, AND DOES NOT
REPRESENT TRUE LAND SUBDIVISION.



RECORD: P.I.
 $\Delta = 01^{\circ} 25' LT$
 STA.477+03.88
 SET P.K./WASHER
 ATOP P.K.NAIL
 SET P.K./WASHER
 6/5/96
 FD P.K./WASHER
 4/8/10, 4/29/10
 SV125
 4/29/10, KPM
 SET MAG/WASHER
 8/30/12, SDC
 FINREFB142
 9/19/12, SDC
 FD P.K./WASHER
 REFB142
 4/2/19
 9/13/19, JFO
 4/21/22, JFO



O.D.O.T. DISTRICT 2 SURVEY OFFICE (USE ONLY)

PERSONNEL _____ REFERENCE NO. 142 B SHEET 31 OF 63
 NOTES MOSER DATE 5/6/11 ROUTE SR 163
 H.C. MOSER WEATHER CLOUDY COUNTY OTTAWA
 R.C. HARBAUGH TEMP. 60° TOWNSHIP DANBURY
 SECTION 1-9
 DWG BY NIESE PID 107060

TYPE MONUMENT P.K./WASHER

ON SURFACE - ~~BELOW~~ ON

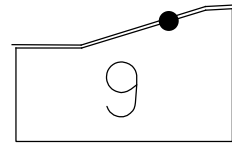
OFFSET \varnothing PAVEMENT 0.6' ~~LT~~ : RT
10.2' TO RT EDGE PAVEMENT

STATION: 1880+27

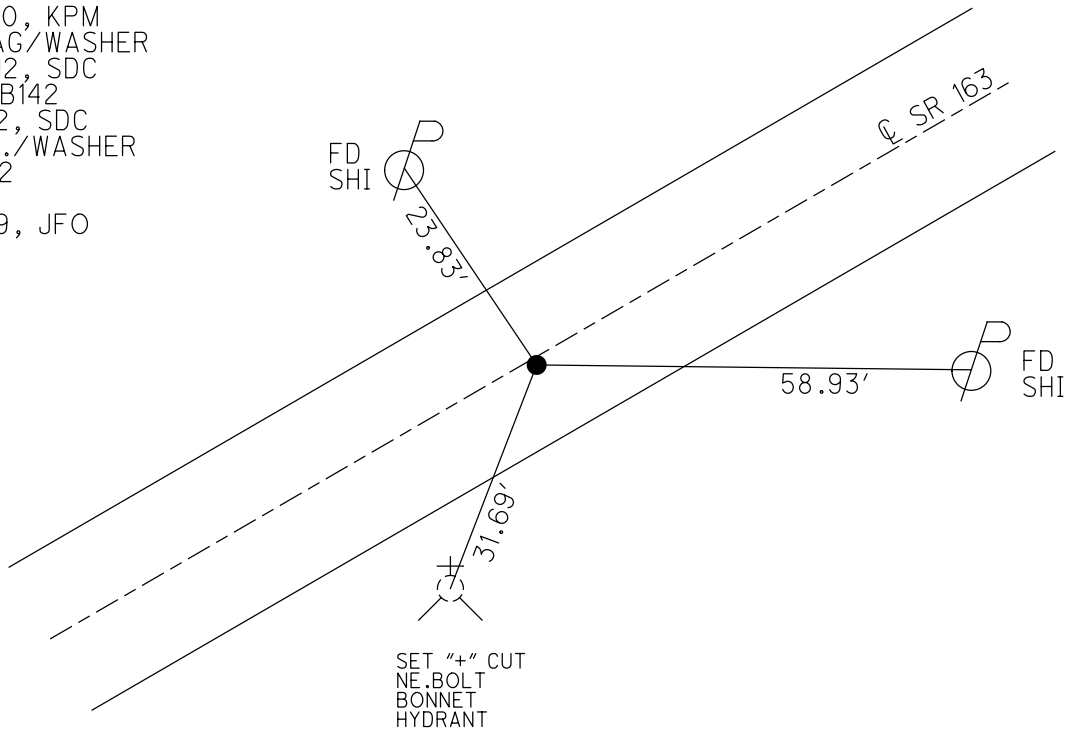
HORZ.DATUM: NAD83(2011) GEOID: 2012A

GRID: NORTHING: 681505.025 EASTING: 1899571.754

NOTE:
THIS MAP IS FOR ODOT PURPOSES ONLY
TO INDEX REFERENCE TIES, AND DOES NOT
REPRESENT TRUE LAND SUBDIVISION.



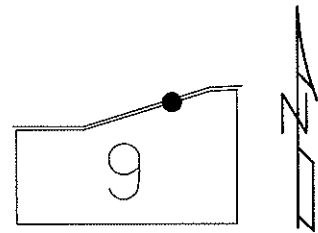
RECORD: P.I.
 $\Delta = 01^\circ 25' LT$
 STA.477+03.88
 SET P.K./WASHER
 ATOP P.K.NAIL
 SET P.K./WASHER
 6/5/96
 FD P.K./WASHER
 4/8/10, 4/29/10
 SV125
 4/29/10, KPM
 SET MAG/WASHER
 8/30/12, SDC
 FINREFB142
 9/19/12, SDC
 FD P.K./WASHER
 REFB142
 4/2/19
 9/13/19, JFO



O.D.O.T. DISTRICT 2 SURVEY OFFICE (USE ONLY)

PERSONNEL	REFERENCE NO. <u>142 B</u>	SHEET <u>31</u> OF <u>63</u>
NOTES <u>MOSER</u>	DATE <u>5/6/11</u>	ROUTE <u>SR 163</u>
H.C. <u>MOSER</u>	WEATHER <u>CLOUDY</u>	COUNTY <u>OTTAWA</u>
R.C. <u>HARBAUGH</u>	TEMP. <u>60°</u>	TOWNSHIP <u>DANBURY</u>
		SECTION <u>1-9</u>

TYPE MONUMENT P.K./WASHER
 ON SURFACE - ~~BELOW~~ ON
~~LEFT~~ - CL PAV'T - RIGHT 0.6'
10.2' TO RT EDGE PAVEMENT
 S.L.M. 1880+27
 Grid: Northing: 681505.028 Easting: 1899571.698



RECORD
 P.I. $\Delta = 01^\circ 25'$ LT. (PLAN)
 477+03.88
 SET P.K./WASHER
 ATOP P.K.
 1' RT. CL PAV'T

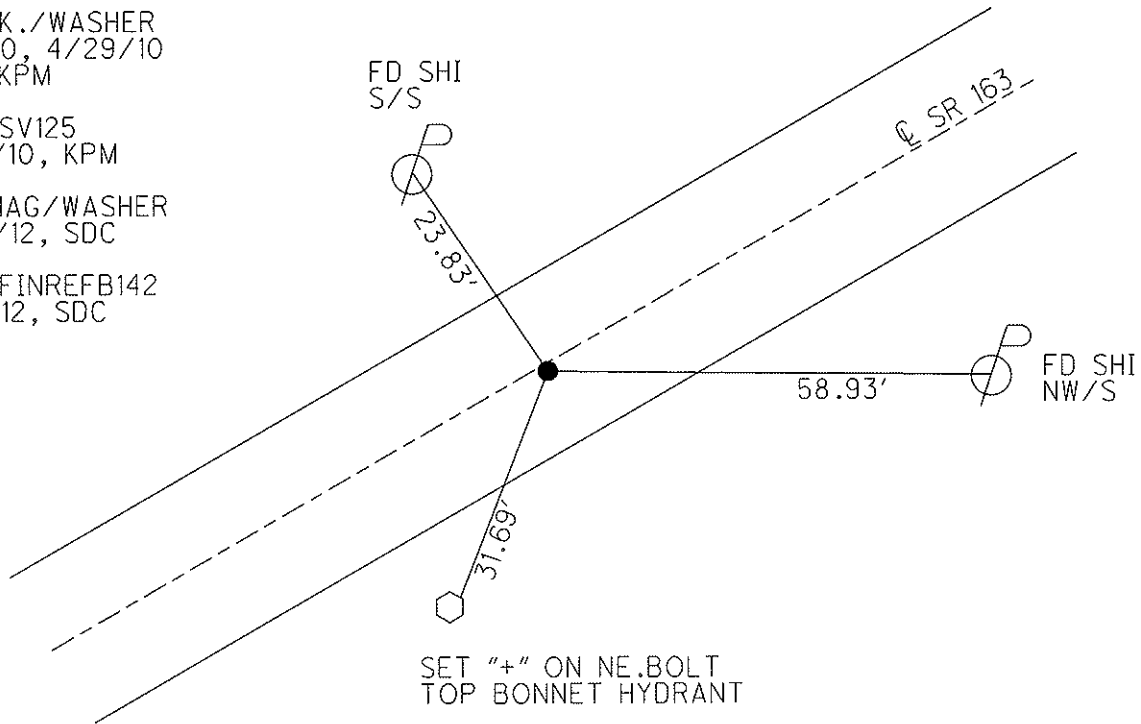
RESET P.K./WASHER
 6/5/96

FD P.K./WASHER
 4/8/10, 4/29/10
 JMH, KPM

GPS, SV125
 4/29/10, KPM

SET MAG/WASHER
 8/30/12, SDC

GPS, FINREFB142
 9/19/12, SDC



O.D.O.T. DISTRICT 2 SURVEY OFFICE

PERSONNEL

REFERENCE NO. 142 B

SHEET 24 OF 52

NOTES CANTERBURY

H.C. LOHRKE

DATE 5-30-95

ROUTE SR 163

R.C. ROUSOS

WEATHER CLOUDY

COUNTY OTTAWIA

TEMP. +64° F

TOWNSHIP DANBURY

SECTION _____

T _____ R _____

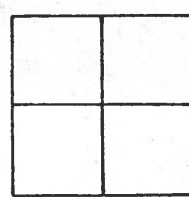
TYPE MONUMENT Reset
PK & WASHER 6-5-96

ON SURFACE - ~~BELOW~~ ON SURFACE

~~LEFT~~ = & PAV'T. - RIGHT 1.4' RT & Pmnt.

10.9' TO RT EDGE PAVEMENT

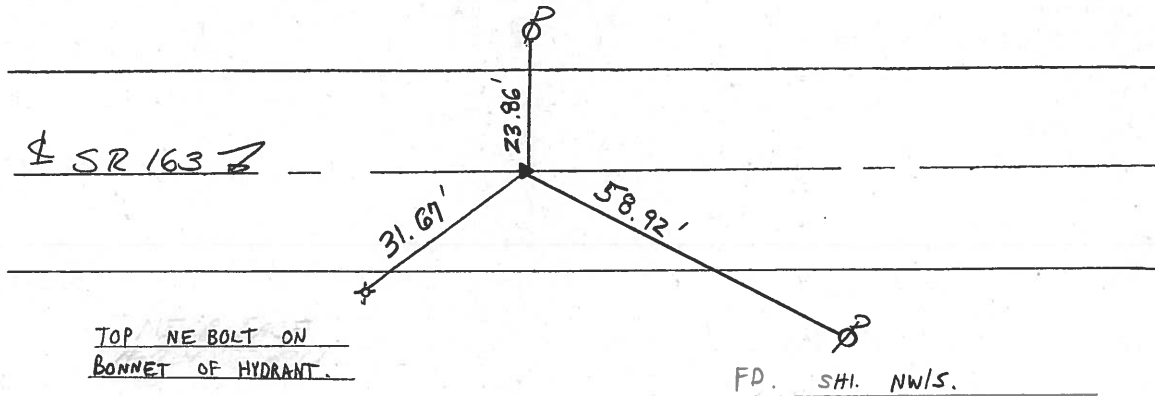
S.L.M. 1880 + 27



P.I.T PER PLAN $\Delta = 01^{\circ} 25' 44''$
477 + 03.88
SET PK & WASHER A TOP
PK 1'± RT & E



SET. SHI. S/S.



County Ottawa S.R. #163

Date 11/22/83

Township Danbury

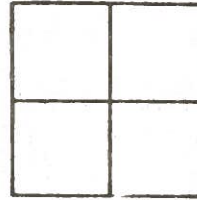
Weather sunny

Section _____

Temp. 53°

T-N, R-E

Personnel Cronin



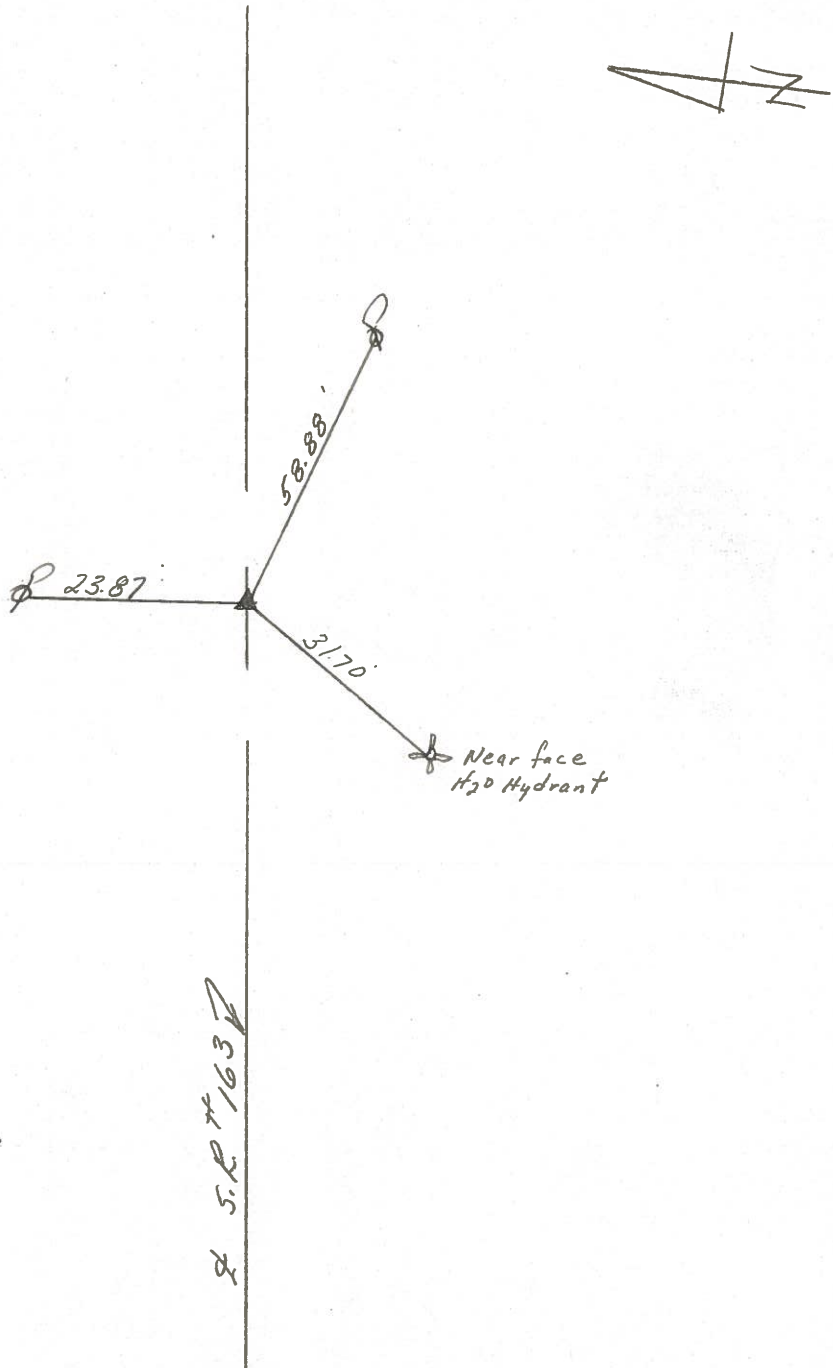
Ripple

Geyman

Barbour

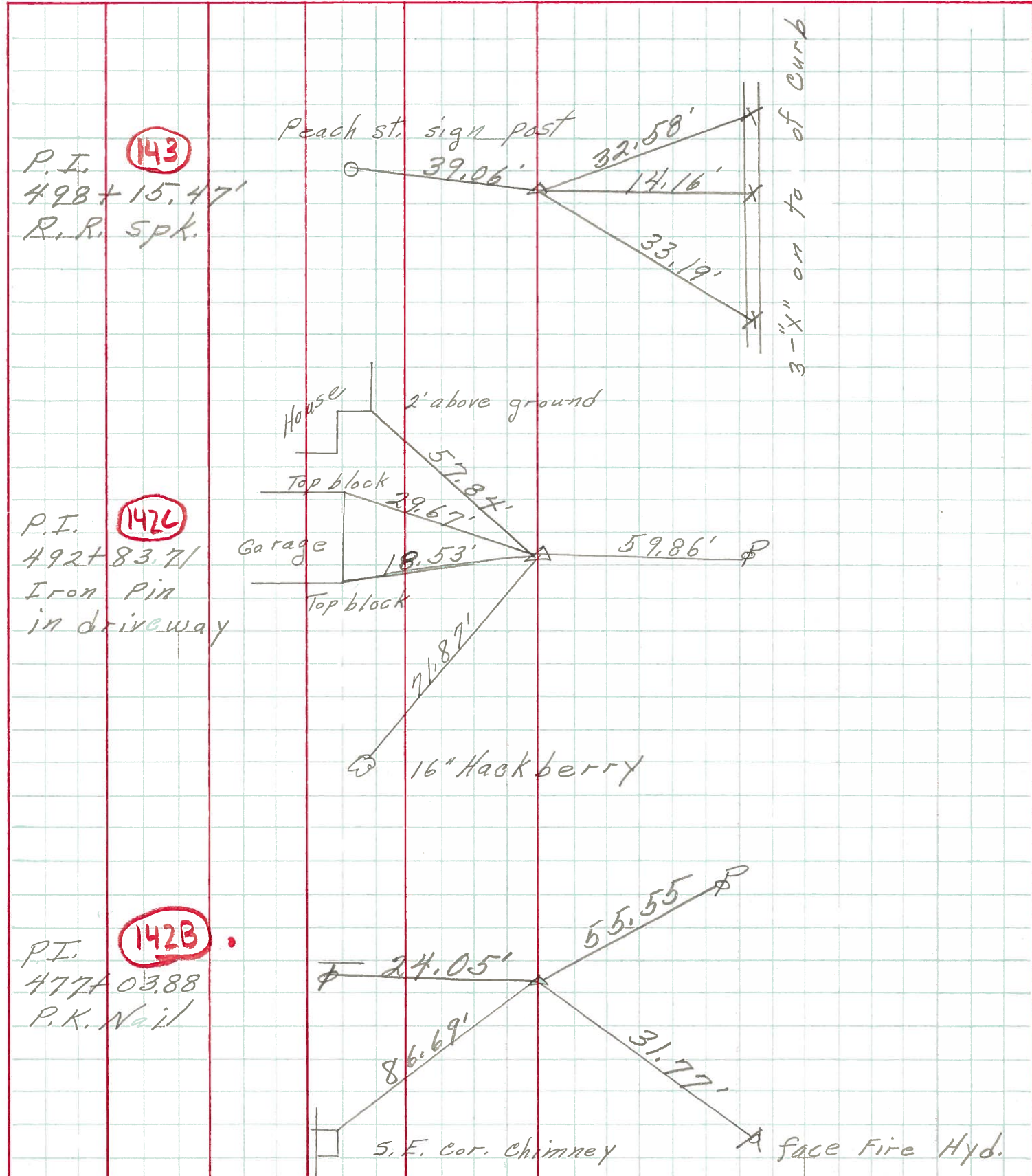
142 B

Plan
P.I. $\Delta = 01^\circ 25' Lt.$
477 + 03.88
Set P.K. washer atop
P.K. 14 Rt. & Permit



S.R. #163

PERSONNEL	TITLE	PERSONNEL	TITLE
_____	_____	_____	_____
COUNTY <u>Ottawa</u> DATE <u>6-10-71</u>			
S. R. <u>163</u> WEATHER _____			
SEC. <u>1</u> TEMP. _____			
DESCRIPTION <u>S.R. # 269 East</u> JOB NO. _____			
LEFT		CENTER LINE	RIGHT



PERSONNEL	TITLE	PERSONNEL	TITLE	COUNTY	DATE	WEATHER	TEMP.
Schneider		Potts		Ottawa	9-12-68	Fair	70°
Mosser				S. R. 163			
Barbour				SEC. S.R.#269 - East			
Redding							

DESCRIPTION: Ties for Control Points

