

O.D.O.T. DISTRICT 2 SURVEY OFFICE (USE ONLY)

PERSONNEL

REFERENCE NO. 142 C

SHEET 32 OF 63

NOTES MOSER

DATE 5/6/11

ROUTE SR 163

H.C. MOSER

WEATHER CLOUDY

COUNTY OTTAWA

R.C. HARBAUGH

TEMP. 60°

TOWNSHIP DANBURY

SECTION 1-9

DWG BY NIESE

PID 107060

TYPE MONUMENT IPIN

~~ON SURFACE~~ - BELOW 3'

OFFSET  $\odot$  PAVEMENT 35.4' LT : ~~RT~~

23.6' LT TO LT EDGE PAVEMENT

STATION: 1896+09

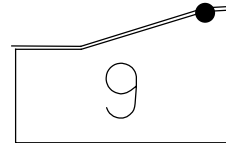
HORZ. DATUM: -

GEOID: -

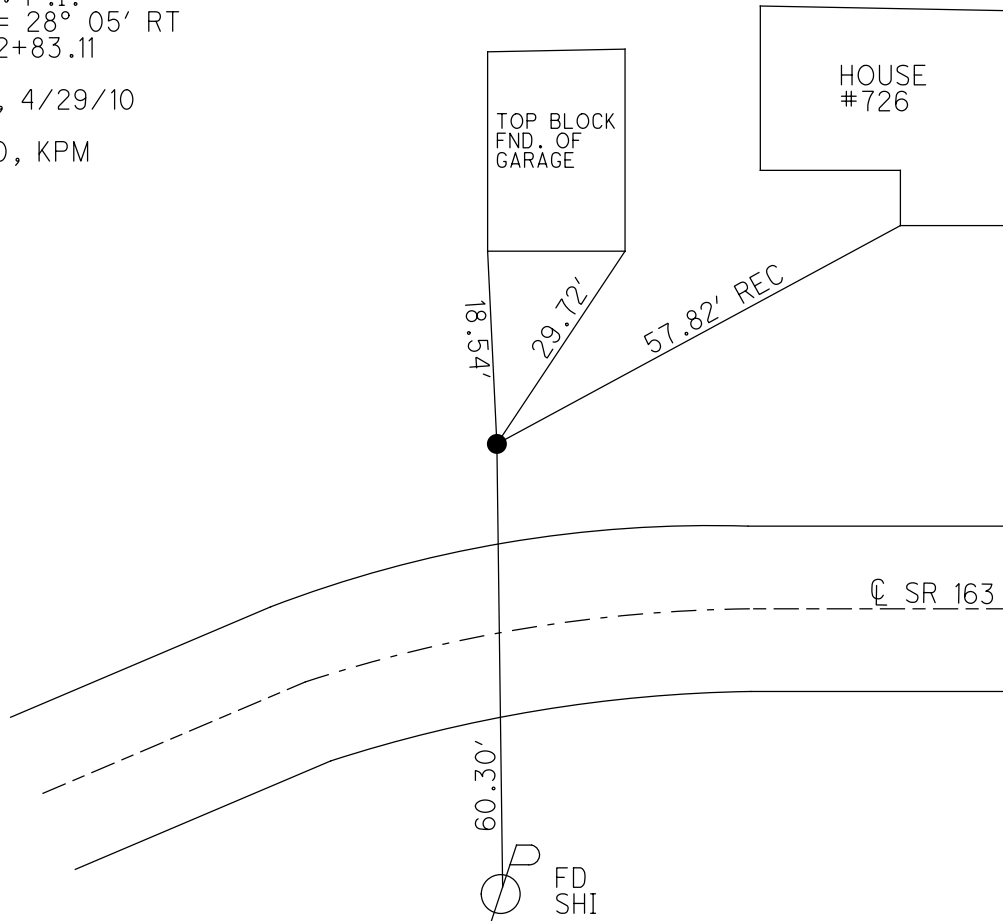
GRID: NORTHING: 682292.787

EASTING: 1900940.249

NOTE:  
THIS MAP IS FOR ODOT PURPOSES ONLY.  
TO INDEX REFERENCE TIES, AND DOES NOT  
REPRESENT TRUE LAND SUBDIVISION.



RECORD: P.I.  
25#64 = 28° 05' RT  
STA. 492+83.11  
FD IPIN  
4/8/10, 4/29/10  
SV126  
4/29/10, KPM

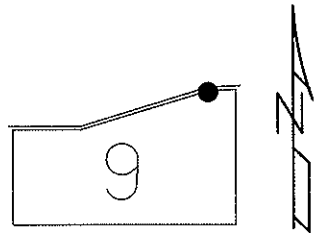


O.D.O.T. DISTRICT 2 SURVEY OFFICE (USE ONLY)

PERSONNEL	REFERENCE NO. <u>142 C</u>	SHEET <u>32</u> OF <u>63</u>
NOTES <u>MOSER</u>	DATE <u>5/6/11</u>	ROUTE <u>SR 163</u>
H.C. <u>MOSER</u>	WEATHER <u>CLOUDY</u>	COUNTY <u>OTTAWA</u>
R.C. <u>HARBAUGH</u>	TEMP. <u>60°</u>	TOWNSHIP <u>DANBURY</u>
		SECTION <u>1-9</u>

TYPE MONUMENT IPIN  
~~ON SURFACE~~ - BELOW 3'  
 LEFT - ℄ PAV'T - ~~RIGHT~~ 35.4'  
23.6' LT TO LT EDGE PAVEMENT  
 S.L.M. 1896+09

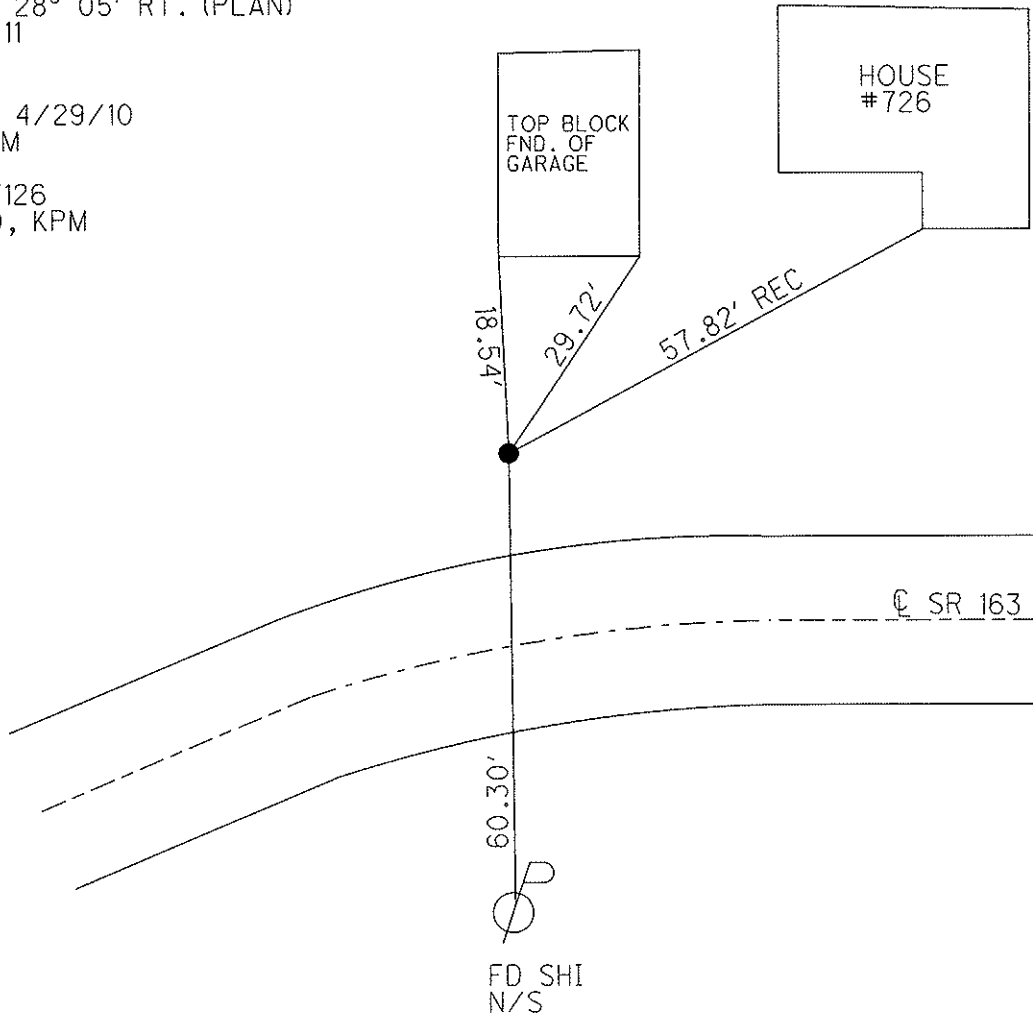
Grid: Northing: 682292.7869 Easting: 1900940.2486



RECORD  
 P.I.  $\Delta = 28^\circ 05' \text{ RT. (PLAN)}$   
 492+83.11

FD IPIN  
 4/8/10, 4/29/10  
 JMH, KPM

GPS, SV126  
 4/29/10, KPM



# O.D.O.T. DISTRICT 2 SURVEY OFFICE

PERSONNEL

REFERENCE NO. 142 C

SHEET 25 OF 52

NOTES CANTERBURY

H.C. LOEHRKE

DATE 5-30-95

ROUTE S.R. 163

R.C. ROUSOS

WEATHER FAIR

COUNTY OTTAWA

TEMP. +64 °F

TOWNSHIP DANBURY

SECTION \_\_\_\_\_

T \_\_\_\_\_ R \_\_\_\_\_

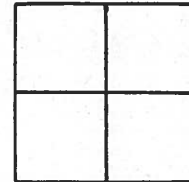
TYPE MONUMENT I-PIN

~~ON SURFACE~~ - BELOW 3" BELOW

LEFT - CL PAV'T. - RIGHT 35.4 LT &

23.6 LT <sup>OF</sup> LT EDGE PAVEMENT

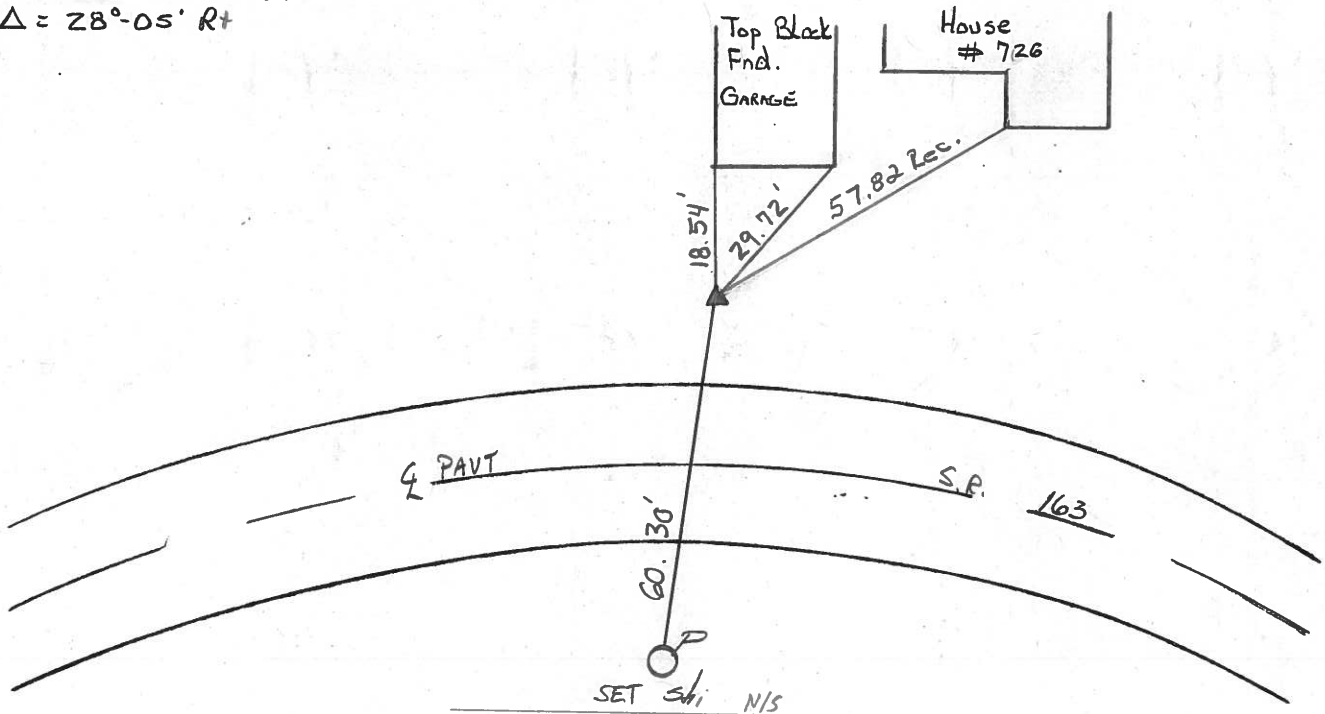
S.L.M. 1896 + 09



RECORD : PLANS

PI Sta 452+83.71

$\Delta = 28^{\circ}-05' R+$



Q.D.O.T. DISTRICT 2 SURVEY OFFICE

SHEET 24 OF

County Ottawa S.R. #163

Date 11/22/83

Township Danbury

Weather sunny

Section     

Temp. 53°

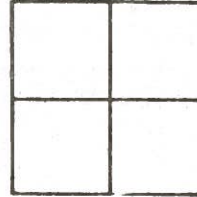
T=N, R=E

Personnel Cronin

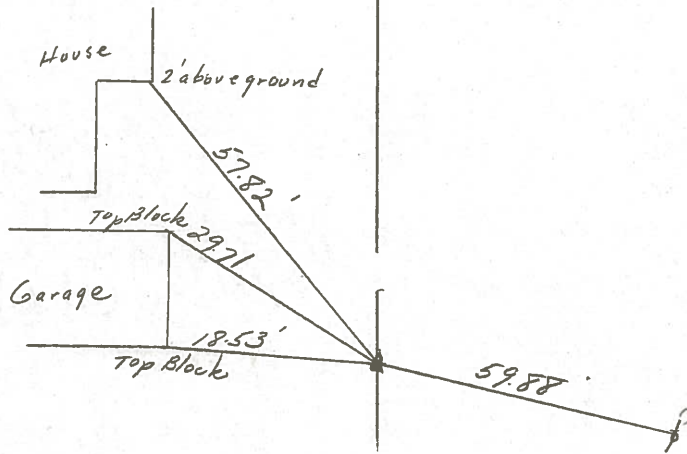
Ripple

Geyman

Barbour



142C



Plan  
P.I.  $\Delta = 28^{\circ}05' \text{ Rt.}$   
492 + 83.71  
Ed. I. Pin 23.5' Lt.-Lt.  
Edge of Pavement

E. S.R. #163

PERSONNEL TITLE PERSONNEL TITLE

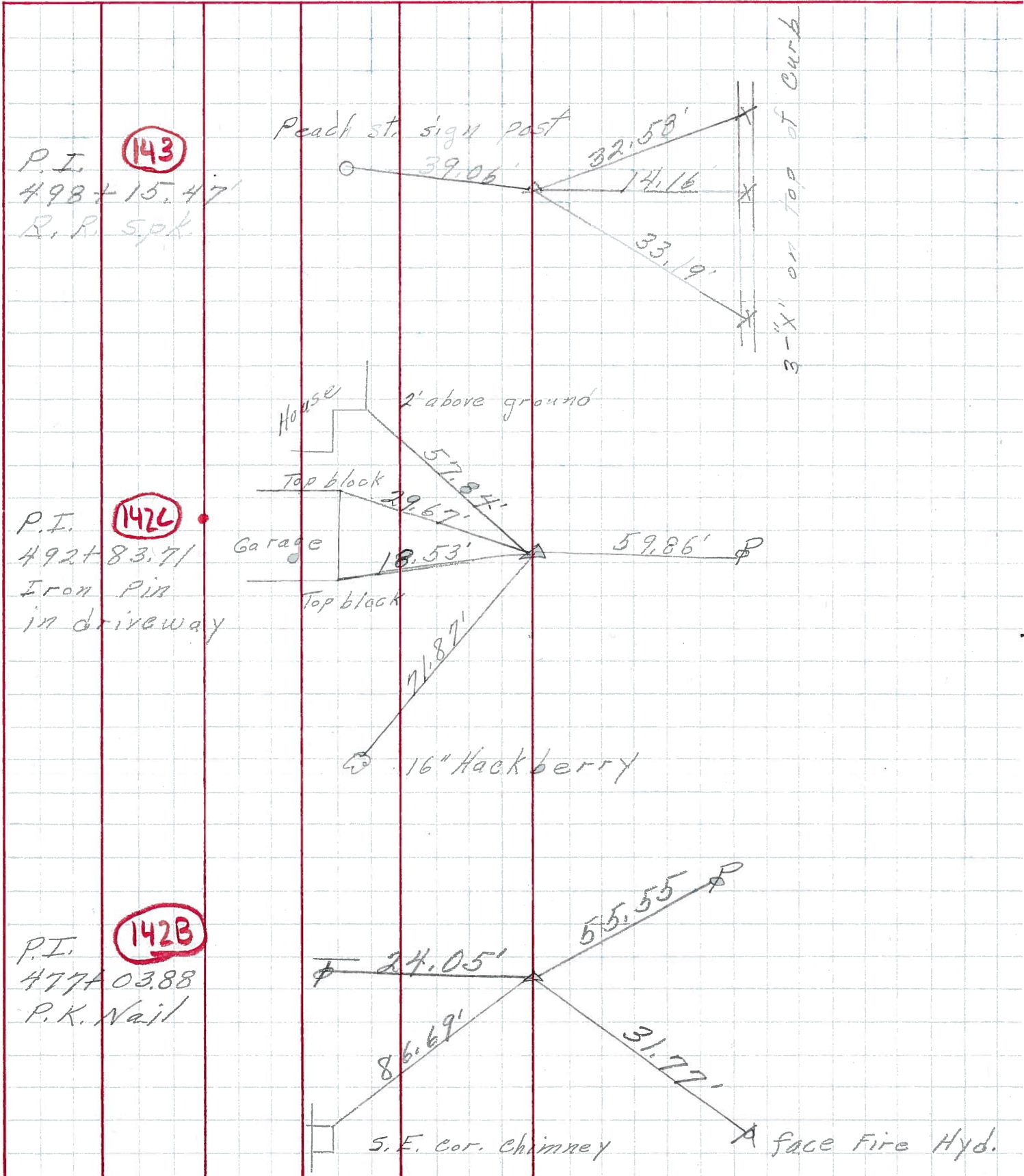
COUNTY Ottawa DATE 6-10-71

S. R. 163 WEATHER

SEC. 1 TEMP.

DESCRIPTION S.R. # 269 East JOB NO.

LEFT CENTER LINE RIGHT



PERSONNEL	TITLE	PERSONNEL	TITLE	COUNTY	DATE
Schneider		Potts		Ottawa	9-12-68
Mosser				S. R. <u>163</u>	WEATHER <u>Fair</u>
Barbour				SEC. <u>S.R.#269 - East</u>	TEMP. <u>70°</u>
Redding					

DESCRIPTION Ties for Control Points JOB NO. \_\_\_\_\_

