

O.D.O.T. DISTRICT 2 SURVEY OFFICE (USE ONLY)

PERSONNEL _____ REFERENCE NO. 143 SHEET 33 OF 66
 NOTES MOSER DATE 5/6/11 ROUTE SR 163
 H.C. MOSER WEATHER CLOUDY COUNTY OTTAWA
 R.C. HARBAUGH TEMP. 60° TOWNSHIP DANBURY
 SECTION 1-9
 DWG BY NIESE PID 107060

TYPE MONUMENT P.K./WASHER

ON SURFACE - ~~BELOW~~ ON _____

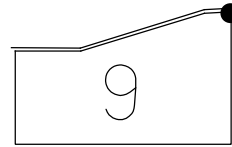
OFFSET C PAVEMENT 2.5' ~~LT~~ : RT
9.5' TO RT EDGE PAVEMENT

STATION: 1901+52

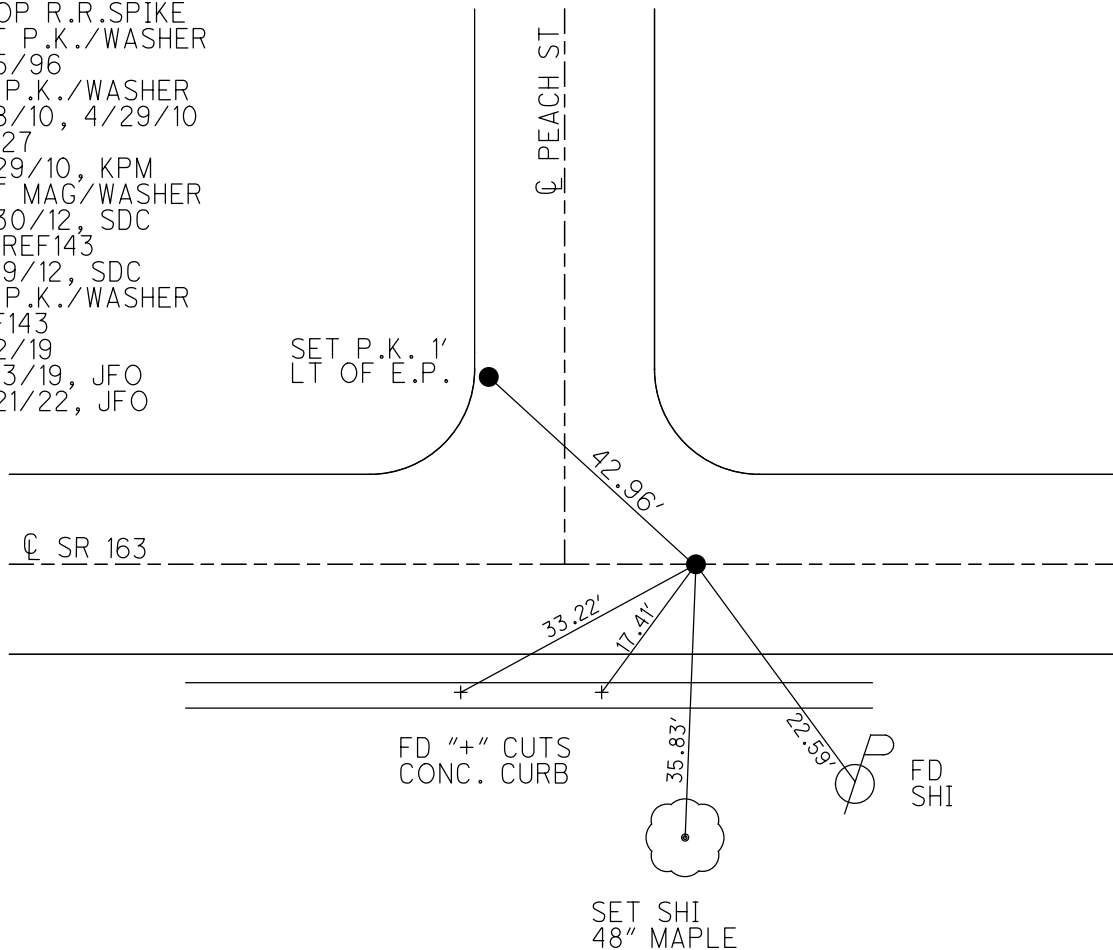
HORIZ.DATUM: NAD83(2011) GEOID: 2012A

GRID: NORTHING: 682310.262 EASTING: 1901481.397

NOTE:
THIS MAP IS FOR ODOT PURPOSES ONLY
TO INDEX REFERENCE TIES, AND DOES NOT
REPRESENT TRUE LAND SUBDIVISION.



RECORD: P.I.
 $\Delta = 07^\circ 5' \text{ LT}$
 STA. 498+15.47
 SET P.K./WASHER
 ATOP R.R.SPIKE
 SET P.K./WASHER
 6/5/96
 FD P.K./WASHER
 4/8/10, 4/29/10
 SV127
 4/29/10, KPM
 SET MAG/WASHER
 8/30/12, SDC
 FINREF143
 9/19/12, SDC
 FD P.K./WASHER
 REF143
 4/2/19
 9/13/19, JFO
 4/21/22, JFO



O.D.O.T. DISTRICT 2 SURVEY OFFICE (USE ONLY)

PERSONNEL	REFERENCE NO. <u>143</u>	SHEET <u>33</u> OF <u>63</u>
NOTES <u>MOSE</u>	DATE <u>5/6/11</u>	ROUTE <u>SR 163</u>
H.C. <u>MOSE</u>	WEATHER <u>CLOUDY</u>	COUNTY <u>OTTAWA</u>
R.C. <u>HARBAUGH</u>	TEMP. <u>60°</u>	TOWNSHIP <u>DANBURY</u>
		SECTION <u>1-9</u>

DWG BY NIESE PID 107060

TYPE MONUMENT P.K./WASHER

ON SURFACE - ~~BELOW~~ ON

OFFSET \odot PAVEMENT 2.5' ~~LT~~ : RT

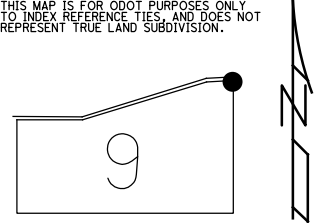
9.5' TO RT EDGE PAVEMENT

STATION: 1901+52

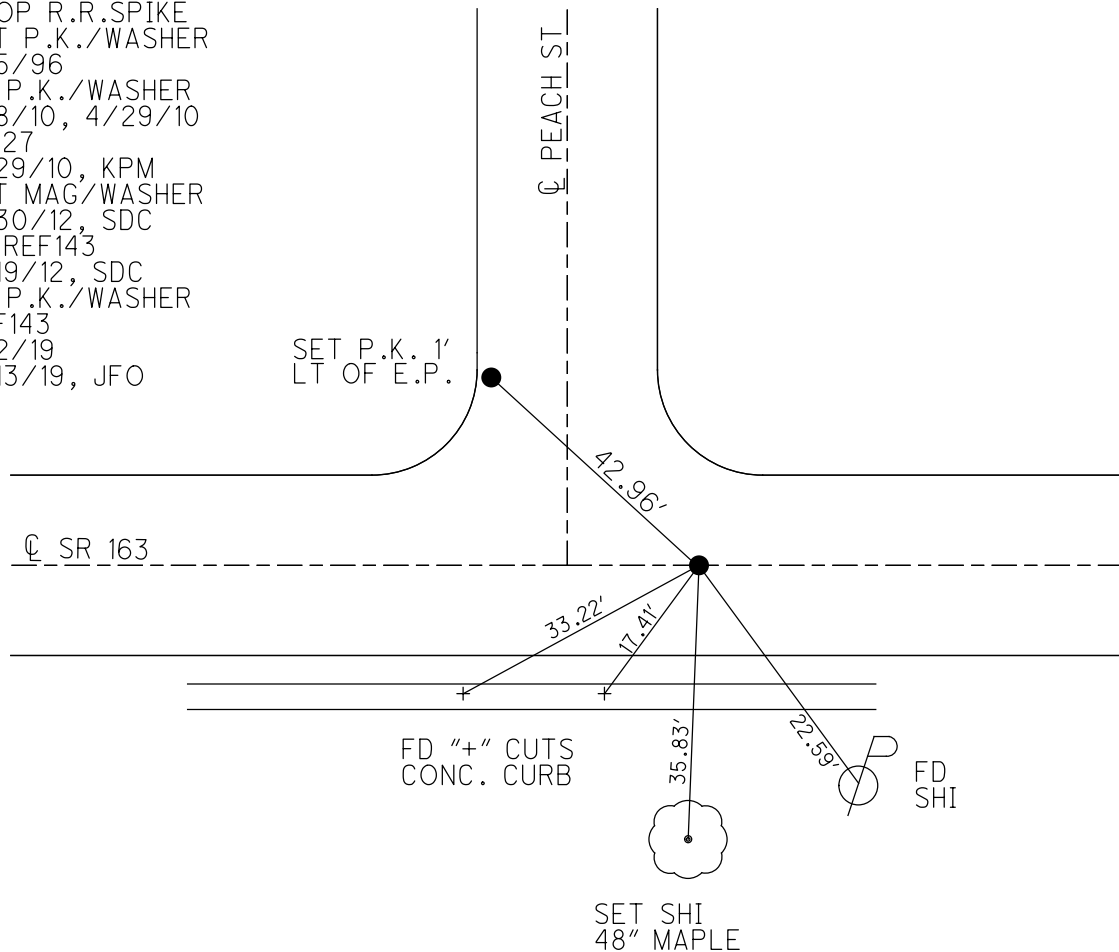
HORZ.DATUM: NAD83(2011) GEOID: 2012A

GRID: NORTHING: 682310.262 EASTING: 1901481.397

NOTE:
THIS MAP IS FOR ODOT PURPOSES ONLY
TO INDEX REFERENCE TIES, AND DOES NOT
REPRESENT TRUE LAND SUBDIVISION.



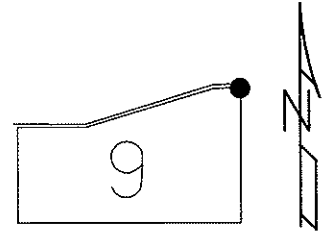
RECORD: P.I.
 $\Delta = 07^\circ 5' \text{ LT}$
 STA. 498+15.47
 SET P.K./WASHER
 ATOP R.R.SPIKE
 SET P.K./WASHER
 6/5/96
 FD P.K./WASHER
 4/8/10, 4/29/10
 SV127
 4/29/10, KPM
 SET MAG/WASHER
 8/30/12, SDC
 FINREF143
 9/19/12, SDC
 FD P.K./WASHER
 REF143
 4/2/19
 9/13/19, JFO



O.D.O.T. DISTRICT 2 SURVEY OFFICE (USE ONLY)

PERSONNEL	REFERENCE NO. <u>143</u>	SHEET <u>33</u> OF <u>63</u>
NOTES <u>MOSER</u>	DATE <u>5/6/11</u>	ROUTE <u>SR 163</u>
H.C. <u>MOSER</u>	WEATHER <u>CLOUDY</u>	COUNTY <u>OTTAWA</u>
R.C. <u>HARBAUGH</u>	TEMP. <u>60°</u>	TOWNSHIP <u>DANBURY</u>
		SECTION <u>1-9</u>

TYPE MONUMENT P.K./WASHER
 ON SURFACE - ~~BELOW~~ ON
~~LEFT~~ - CL PAV'T - RIGHT 2.5'
9.5' TO RT EDGE PAVEMENT
 S.L.M. 1901+52
 Grid: Northing: 682310.387 Easting: 1901481.354



RECORD
 P.I. $\Delta = 07^\circ 5' \text{ LT. (PLAN)}$
 498+15.47
 SET P.K./WASHER
 ATOP R.R.SPIKE

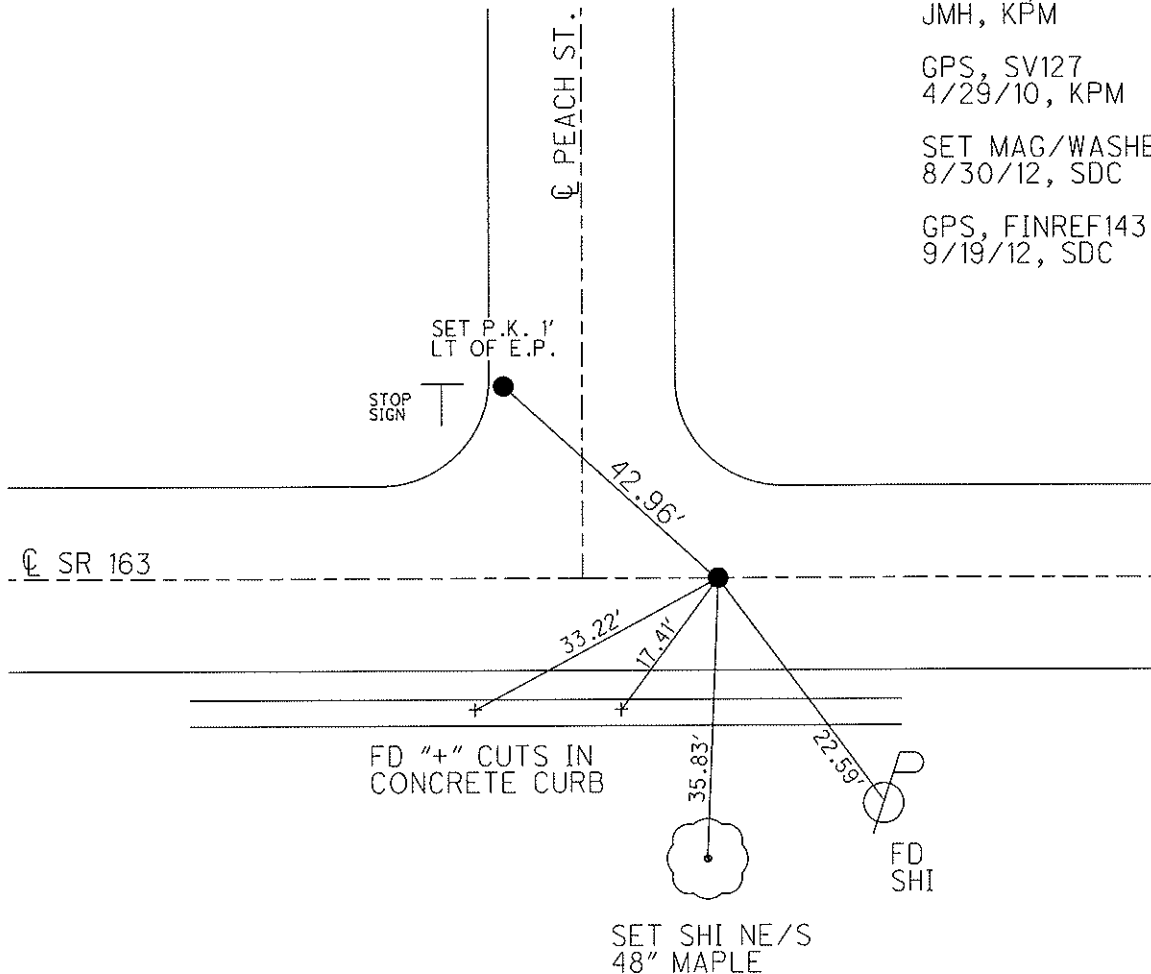
RESET P.K./WASHER
 6/5/96

FD P.K./WASHER
 4/8/10, 4/29/10
 JMH, KPM

GPS, SV127
 4/29/10, KPM

SET MAG/WASHER
 8/30/12, SDC

GPS, FINREF143
 9/19/12, SDC



O.D.O.T. DISTRICT 2 SURVEY OFFICE

PERSONNEL _____

REFERENCE NO. 143

SHEET 26 OF 52

NOTES CANTERBURY

H.C. LOEHAKE

R.C. ROUSOS

DATE 5-30-95

WEATHER FAIR

TEMP. +65° F

ROUTE SR 163

COUNTY OTTAWA

TOWNSHIP DANBURY

SECTION _____

T _____ R _____

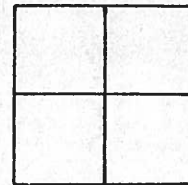
TYPE MONUMENT Reset
P.K. / WASHER 6-5-96

ON SURFACE - ~~BELOW~~ Yes

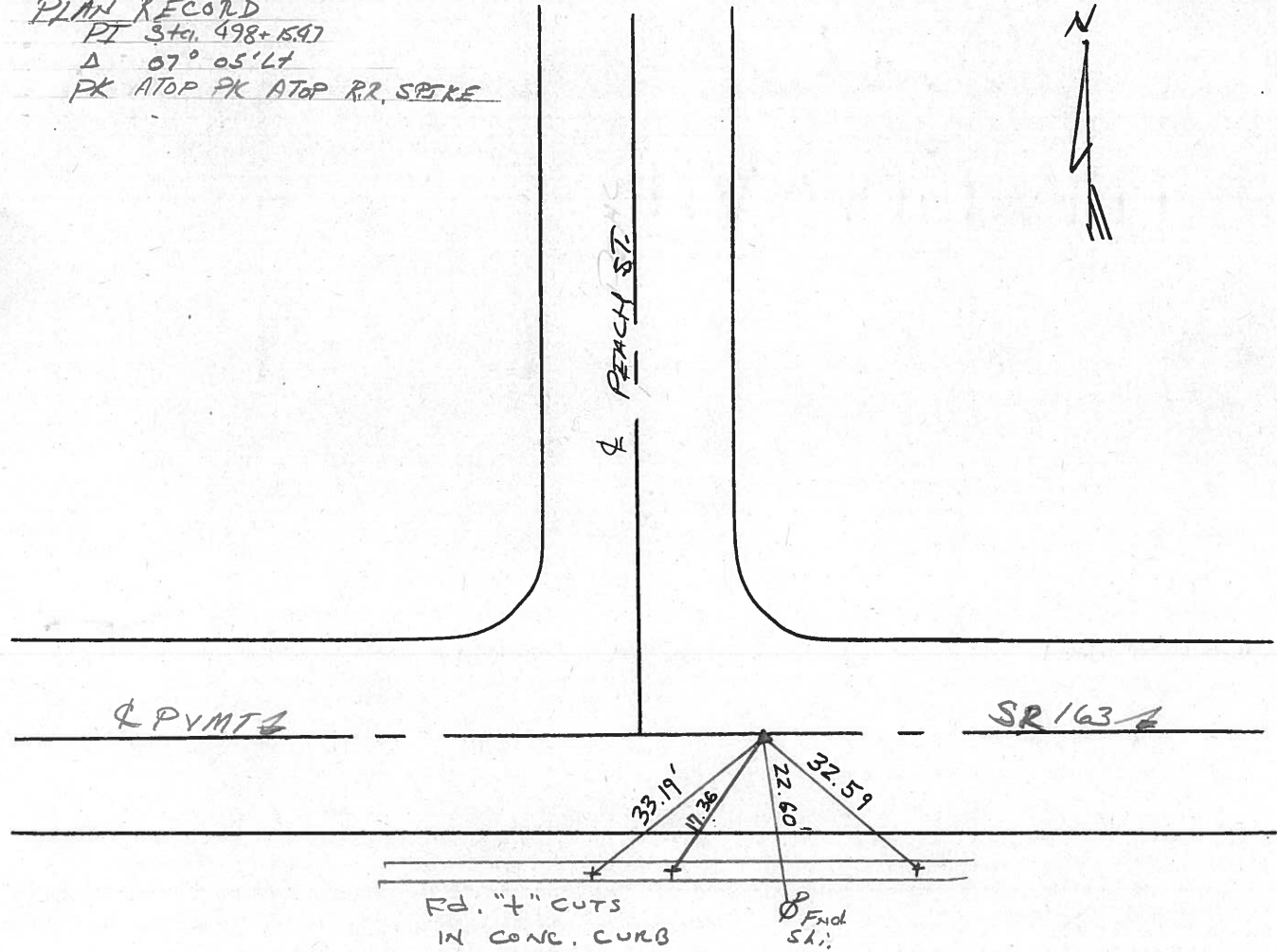
~~LEFT~~ - PAV'T. - RIGHT 0.4 RT ℄

10.8' TO RT EDGE PAVEMENT

S.L.M. 1901 + 52



PLAN RECORD
PT Sta. 498 + 597
Δ 07° 05' Lt
PK ATOP PK ATOP RR SPIKE



County Ottawa S.R. #163

Date 11/22/83

Township Danbury

Weather sunny

Section _____

Temp. 53°

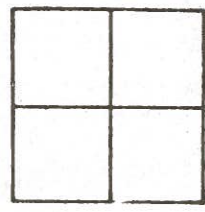
T-N, R-E

Personnel Cranin

Ripple

Geyman

Barbour



143



Plan
P.I. A = 07°05 Lt.
498 + 15.47
set P.K. & washer atop
R.R. spike .5 Rt. & Bunit

peach st.
sign post 38.90
0.4' up

32.59'
17.35'
33.20'

4' cut in conc. curb

& S.R. #163P

PERSONNEL TITLE PERSONNEL TITLE

COUNTY Ottawa DATE 6-10-71

S. R. 163 WEATHER

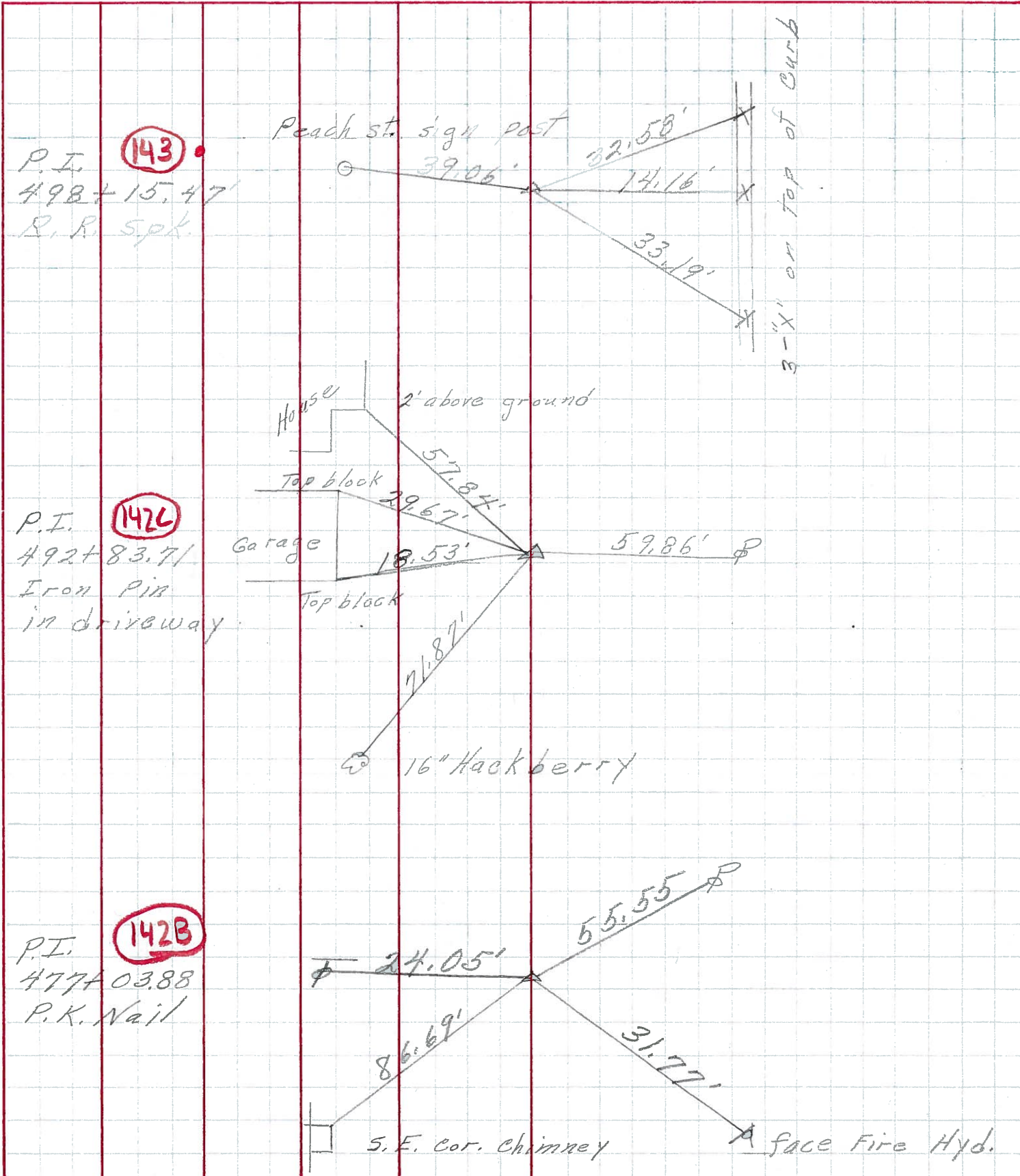
SEC. 1 TEMP.

DESCRIPTION S.R. # 269 East JOB NO.

LEFT

CENTER LINE

RIGHT



PERSONNEL	TITLE	PERSONNEL	TITLE	COUNTY	DATE
Schneider		Potts		Ottawa	9-12-68
Mosser				S. R. <u>16.3</u>	WEATHER <u>Fair</u>
Barbour				SEC. <u>S.R.#269 - East</u>	TEMP. <u>70°</u>
Redding					
DESCRIPTION	<u>Ties for Control Points</u>				JOB NO.

