

O.D.O.T. DISTRICT 2 SURVEY OFFICE (USE ONLY)

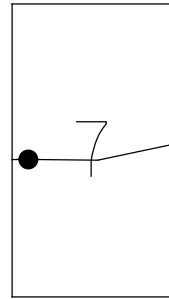
PERSONNEL \_\_\_\_\_ REFERENCE NO. 144 SHEET 35 OF 66  
 NOTES MOSER DATE 5/6/11 ROUTE SR 163  
 H.C. MOSER WEATHER CLOUDY COUNTY OTTAWA  
 R.C. HARBAUGH TEMP. 55° TOWNSHIP DANBURY  
 SECTION 1-7

DWG BY NIESE PID 107060

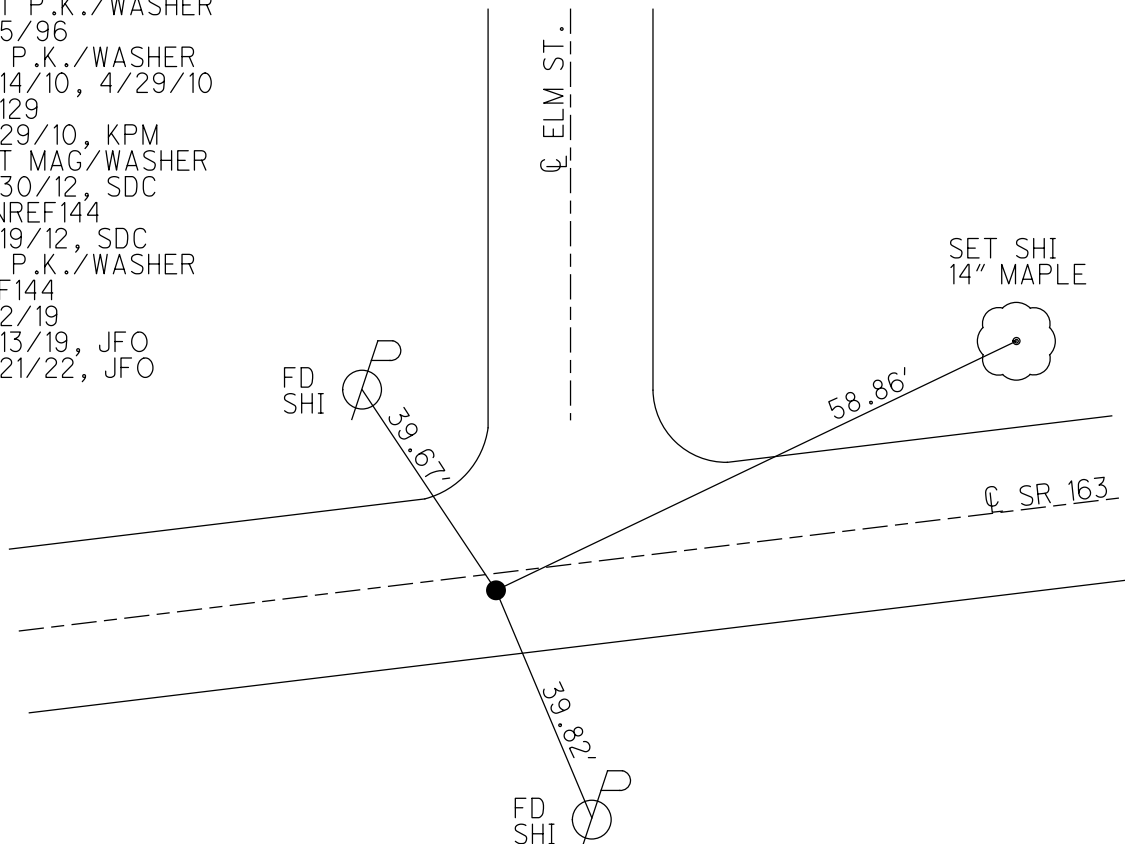
NOTE:  
THIS MAP IS FOR ODOT PURPOSES ONLY  
TO INDEX REFERENCE TIES, AND DOES NOT  
REPRESENT TRUE LAND SUBDIVISION.

TYPE MONUMENT P.K./WASHER  
 ON SURFACE - ~~BELOW~~ ON  
 OFFSET Q PAVEMENT 3.0' LT : RT  
8.5' TO RT EDGE PAVEMENT  
 STATION: 1907+76

HORZ.DATUM: NAD83(2011) GEOID: 2012A  
 GRID: NORTHING: 682352.380 EASTING: 1902103.300



RECORD: P.I.  
 $\Delta = 11^\circ 27' \text{ LT}$   
 STA.504+40.48  
 P.K./WASHER  
 ATOP R.R.SPIKE  
 SET P.K./WASHER  
 6/5/96  
 FD P.K./WASHER  
 4/14/10, 4/29/10  
 SV129  
 4/29/10, KPM  
 SET MAG/WASHER  
 8/30/12, SDC  
 FINREF144  
 9/19/12, SDC  
 FD P.K./WASHER  
 REF144  
 4/2/19  
 9/13/19, JFO  
 4/21/22, JFO



O.D.O.T. DISTRICT 2 SURVEY OFFICE (USE ONLY)

PERSONNEL

REFERENCE NO. 144

SHEET 35 OF 63

NOTES MOSER

DATE 5/6/11

ROUTE SR 163

H.C. MOSER

WEATHER CLOUDY

COUNTY OTTAWA

R.C. HARBAUGH

TEMP. 55°

TOWNSHIP DANBURY

SECTION 1-7

DWG BY NIESE

PID 107060

NOTE:  
THIS MAP IS FOR ODOT PURPOSES ONLY  
TO INDEX REFERENCE TIES, AND DOES NOT  
REPRESENT TRUE LAND SUBDIVISION.

TYPE MONUMENT P.K./WASHER

ON SURFACE - ~~BELOW~~ ON

OFFSET  $\phi$  PAVEMENT 3.0' LT : RT

8.5' TO RT EDGE PAVEMENT

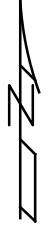
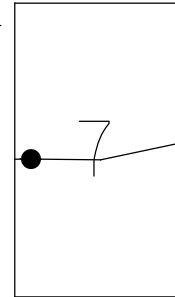
STATION: 1907+76

HORZ.DATUM: NAD83(2011)

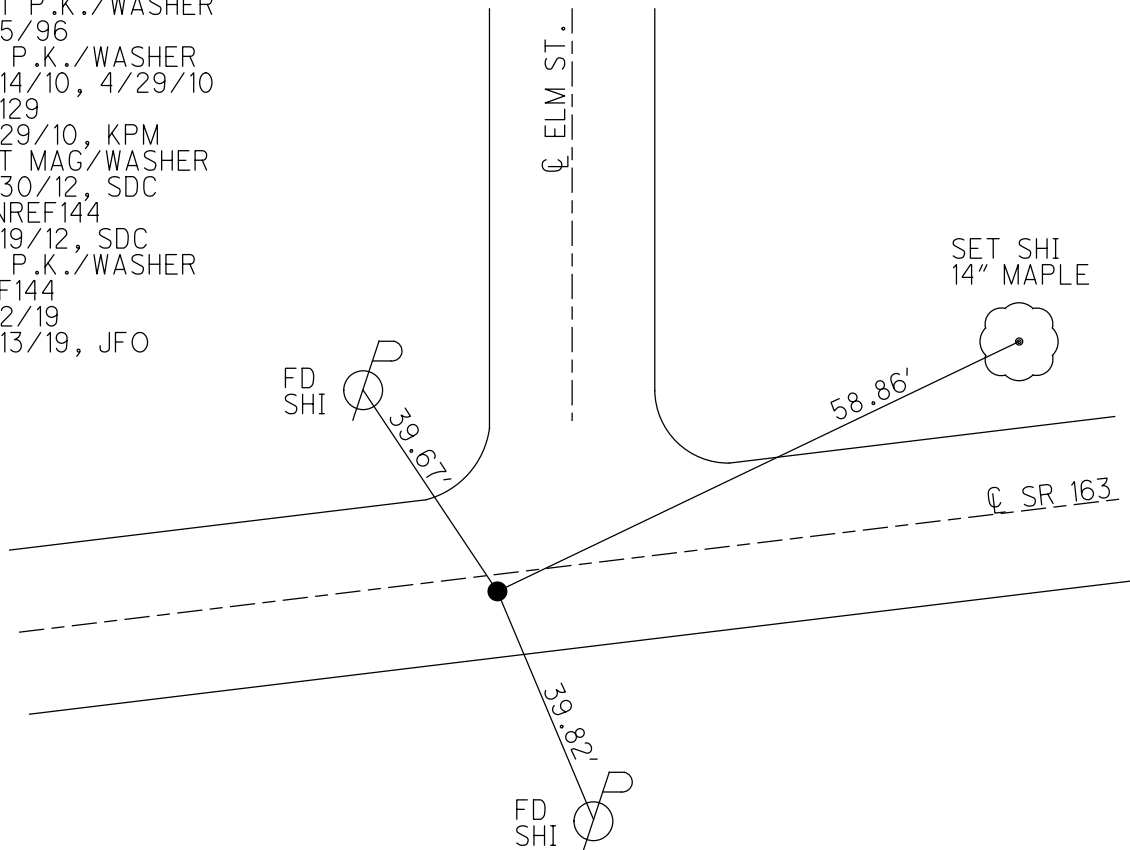
GEOID: 2012A

GRID: NORTHING: 682352.380

EASTING: 1902103.300



RECORD: P.I.  
 $\Delta = 11^{\circ} 27' LT$   
 STA.504+40.48  
 P.K./WASHER  
 ATOP R.R.SPIKE  
 SET P.K./WASHER  
 6/5/96  
 FD P.K./WASHER  
 4/14/10, 4/29/10  
 SV129  
 4/29/10, KPM  
 SET MAG/WASHER  
 8/30/12, SDC  
 FINREF144  
 9/19/12, SDC  
 FD P.K./WASHER  
 REF144  
 4/2/19  
 9/13/19, JFO



O.D.O.T. DISTRICT 2 SURVEY OFFICE (USE ONLY)

PERSONNEL \_\_\_\_\_ REFERENCE NO. 144 SHEET 35 OF 63

NOTES MOSER DATE 5/6/11 ROUTE SR 163

H.C. MOSER WEATHER CLOUDY COUNTY OTTAWA

R.C. HARBAUGH TEMP. 55° TOWNSHIP DANBURY

SECTION 1-7

TYPE MONUMENT P.K./WASHER

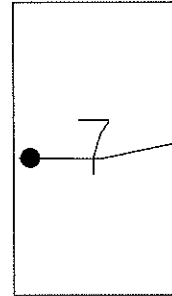
ON SURFACE - ~~BELOW~~ ON

~~LEFT~~ - Q PAV'T - RIGHT 3'

8.5' TO RT EDGE PAVEMENT

S.L.M. 1907+76

Grid: Northing: 682352.431 Easting: 1902103.190



RESET P.K./WASHER  
6/5/96

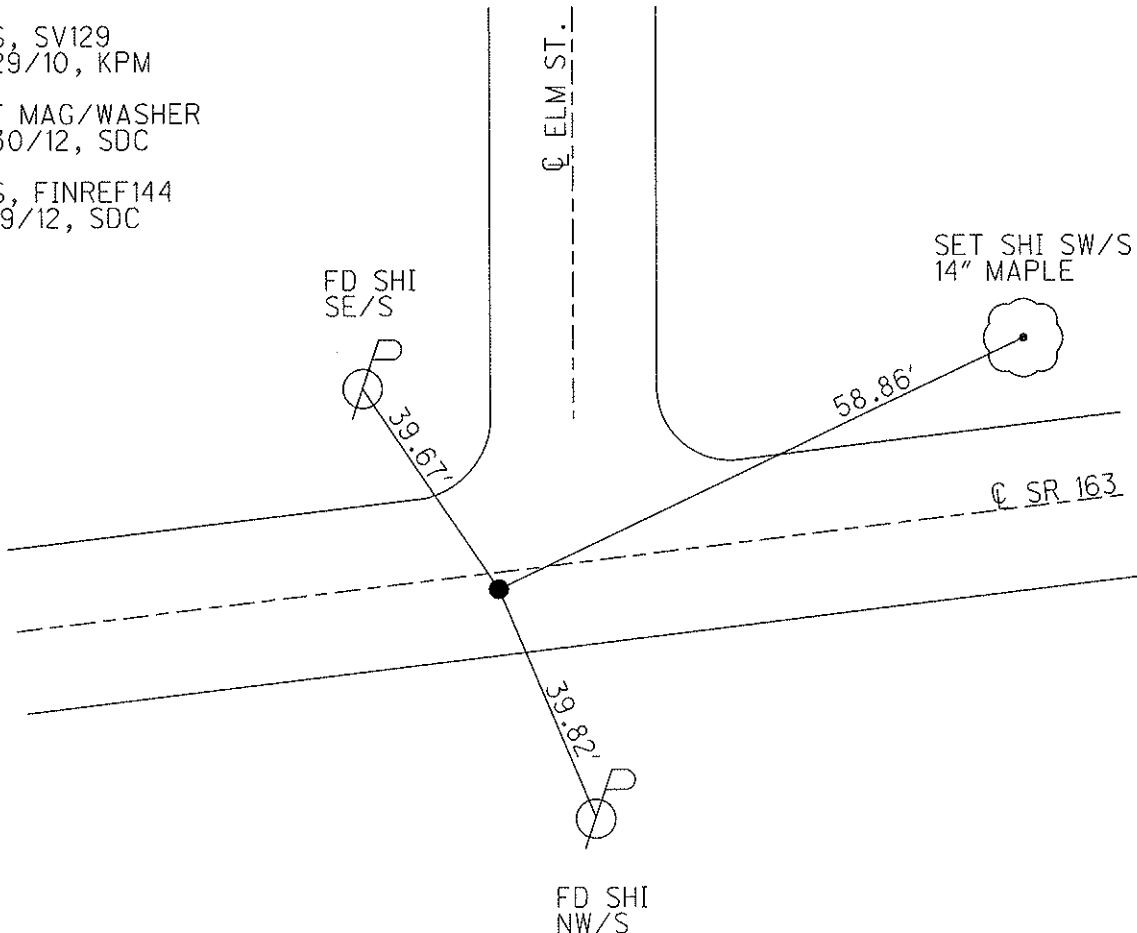
FD P.K./WASHER  
4/14/10, 4/29/10  
JMH, KPM

GPS, SV129  
4/29/10, KPM

SET MAG/WASHER  
8/30/12, SDC

GPS, FINREF144  
9/19/12, SDC

RECORD  
P.I. Δ = 11° 27' LT.  
504+40.48  
P.K./WASHER ATOP  
R.R.SPIKE



# O.D.O.T. DISTRICT 2 SURVEY OFFICE

PERSONNEL \_\_\_\_\_

REFERENCE NO. 144

SHEET 28 OF 52

NOTES CANTERBURY

H.C. LOEHRKE

R.C. ROUSAS

DATE 5-30-95

WEATHER FAIR

TEMP. +70° F

ROUTE S.R. 163

COUNTY OTTAWA

TOWNSHIP DANBURY

SECTION \_\_\_\_\_

T \_\_\_\_\_ R \_\_\_\_\_

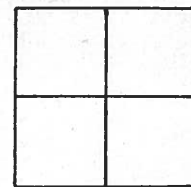
TYPE MONUMENT P.K. / WASHER <sup>Reset</sup> 6-5-96

ON SURFACE - ~~BELOW~~ Yes

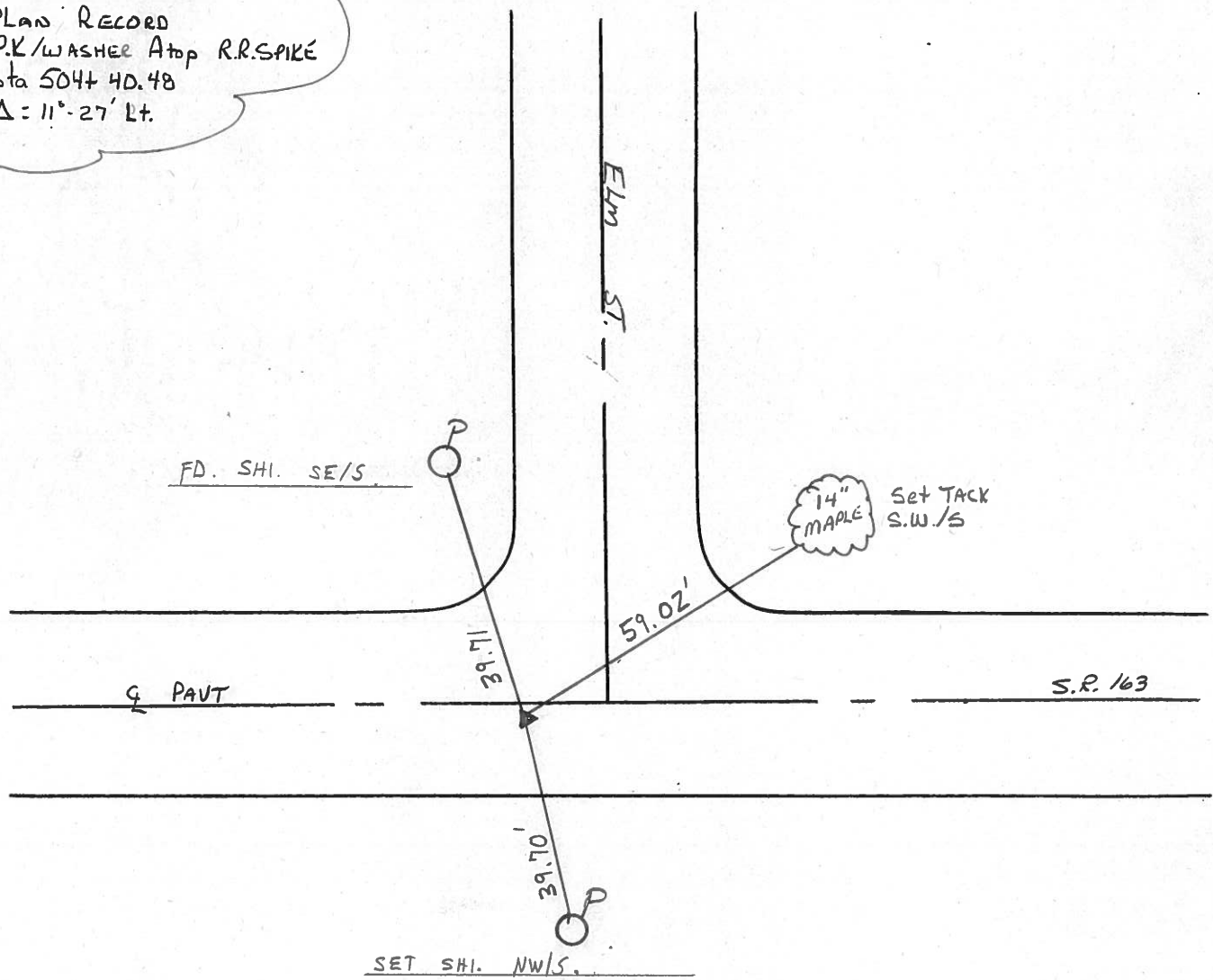
~~LEFT~~ - Q PAV'T. - RIGHT 3.0' RT Q

8.5' TO RT EDGE PAVEMENT

S.L.M. 1907+76



PLAN RECORD  
P.K./WASHER A top R.R. SPIKE  
Sta 504+40.48  
 $\Delta = 11^\circ - 27' \text{ Lt.}$



FD. SHI. SE/S

14" MAPLE Set TACK S.W./S

Q PAVT

S.R. 163

SET SHI. NW/S

County Ottawa S.R. #163

Township Danbury

Section —

T N, R E

Personnel Cronin

Ripple

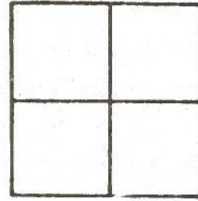
Geyman

Barbour

Date 11/22/83

Weather sunny

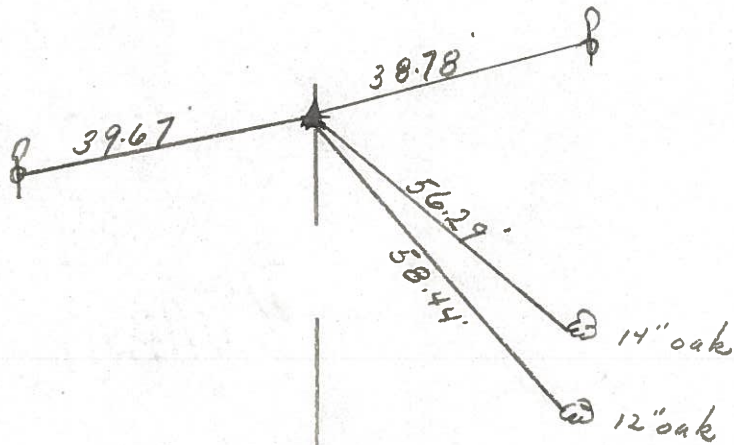
Temp. 53°



144

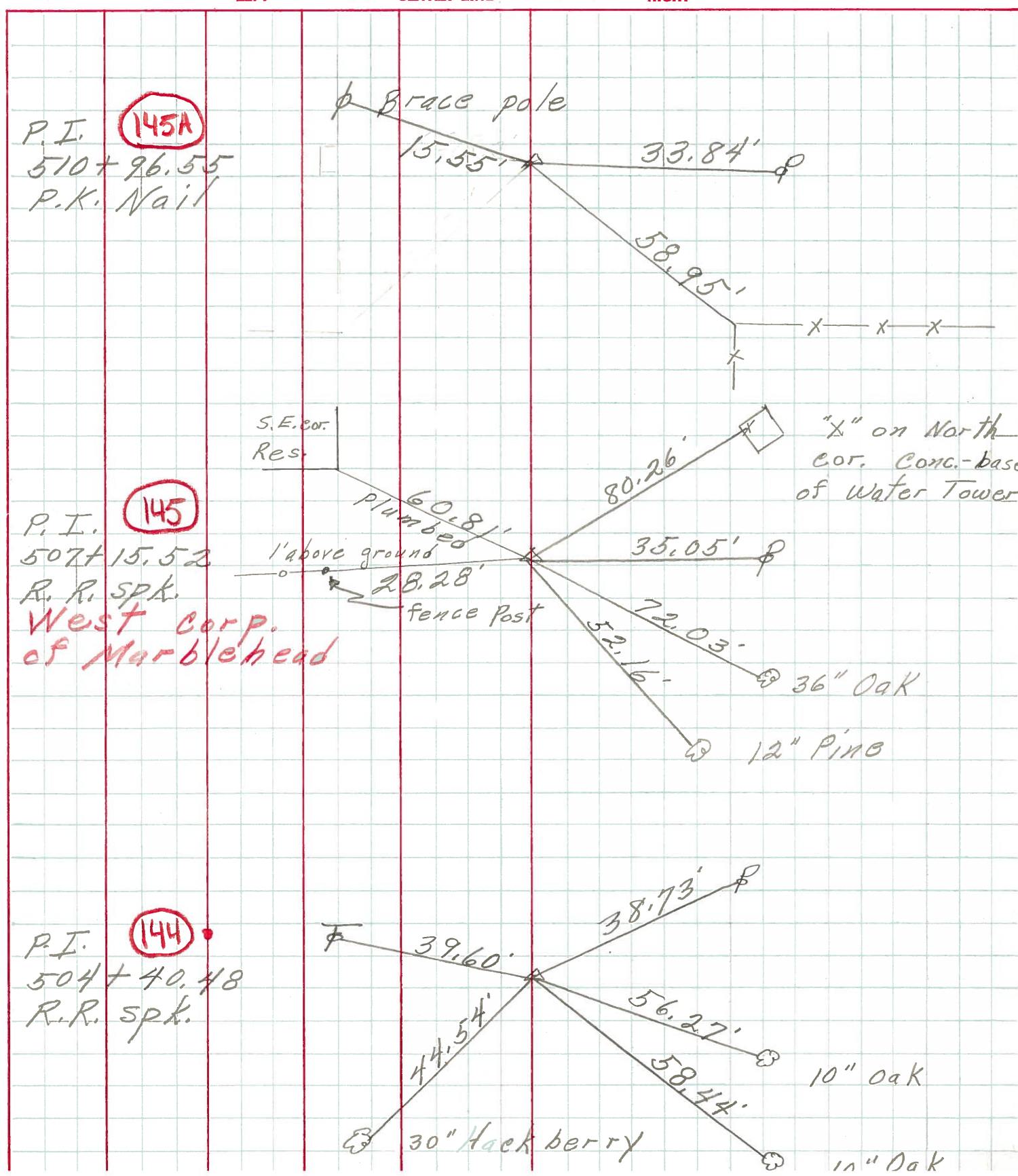


Plan  
P.I.  $\Delta = 11^{\circ} 27' Lt.$   
504 + 40.48  
Set P.R. & washer atop  
R.R. spike 3' Rt. & Paunt



S.R. #163

PERSONNEL \_\_\_\_\_ TITLE \_\_\_\_\_ PERSONNEL \_\_\_\_\_ TITLE \_\_\_\_\_  
 COUNTY Ottawa DATE 6-11-71  
 S. R. 163 WEATHER \_\_\_\_\_  
 SEC. 1 TEMP. \_\_\_\_\_  
 DESCRIPTION S.R. # 269 East & Marblehead JOB NO. \_\_\_\_\_





PERSONNEL	TITLE	PERSONNEL	TITLE	COUNTY	DATE
Schneider		Potts		Ottawa	9-12-68
Masser				S. R. 163	WEATHER Fair
Barbour				SEC. S.R.#269 - East	TEMP. 70°
Redding					

DESCRIPTION Ties for Control Points JOB NO. \_\_\_\_\_

