

O.D.O.T. DISTRICT 2 SURVEY OFFICE (USE ONLY)

PERSONNEL _____ REFERENCE NO. 145 SHEET 36 OF 66
NOTES MOSER DATE 5/6/11 ROUTE SR 163
H.C. MOSER WEATHER CLOUDY COUNTY OTTAWA
R.C. HARBAUGH TEMP. 55° TOWNSHIP DANBURY
SECTION 1-7

DWG BY NIESE PID PVTRAIN

NOTE:
THIS MAP IS FOR ODOT PURPOSES ONLY
TO INDEX REFERENCE TIES, AND DOES NOT
REPRESENT TRUE LAND SUBDIVISION.

TYPE MONUMENT MAG NAIL

~~ON SURFACE~~ - BELOW 0.2'

OFFSET ℄ PAVEMENT 3.0' LT : ~~RT~~

9.2' TO LT EDGE PAVEMENT

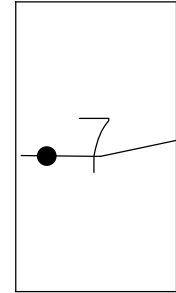
STATION: 1910+25

HORZ. DATUM: NAD83 (2011)

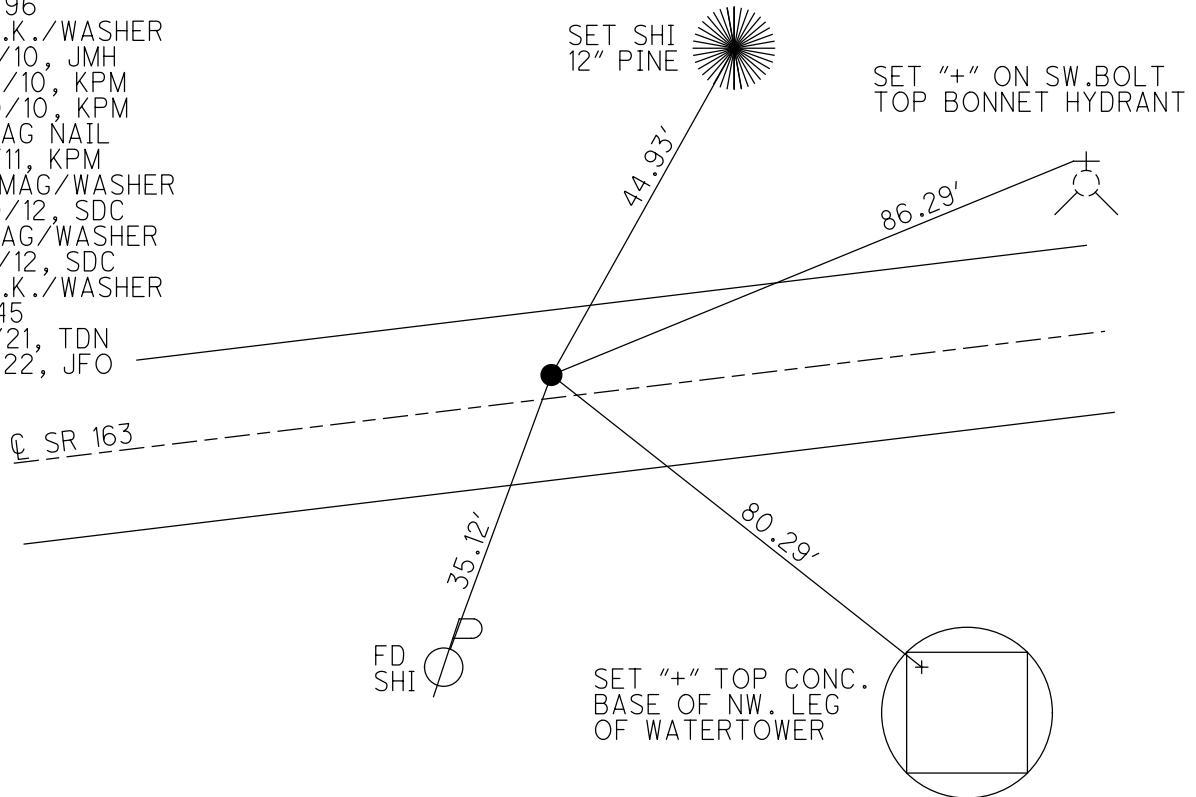
GEOID: NAVD88 2018

GRID: NORTHING: 682402.925

EASTING: 1902374.155



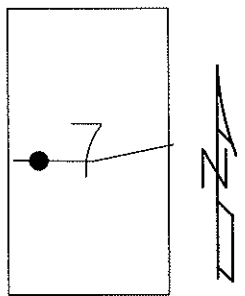
RECORD: P.I.
Δ= 07°26' RT
STA 507+15.52
WEST CORP. LINE
OF MARBLEHEAD
P.K./WASHER
ABOVE R.R.SPIKE
SET P.K./WASHER
6/5/96
FD P.K./WASHER
4/14/10, JMH
4/29/10, KPM
4/30/10, KPM
FD MAG NAIL
5/6/11, KPM
SET MAG/WASHER
8/30/12, SDC
FD MAG/WASHER
9/19/12, SDC
FD P.K./WASHER
REF145
6/11/21, TDN
2/7/22, JFO



O.D.O.T. DISTRICT 2 SURVEY OFFICE (USE ONLY)

PERSONNEL _____ REFERENCE NO. 145 SHEET 36 OF 63
 NOTES MOSE DATE 5/6/11 ROUTE SR 163
 H.C. MOSE WEATHER CLOUDY COUNTY OTTAWA
 R.C. HARBAUGH TEMP. 55° TOWNSHIP DANBURY
 _____ SECTION 1-7

TYPE MONUMENT MAG NAIL
~~ON SURFACE~~ - BELOW 0.2'
 LEFT - Q PAV'T - ~~RIGHT~~ 3'
9.2' TO LT EDGE PAVEMENT
 S.L.M. 1910+25
 Grid: Northing: 682402.994 Easting: 1902374.078



RESET P.K./WASHER
 6/5/96

 FD P.K./WASHER
 4/14/10, 4/30/10
 JMH, KPM

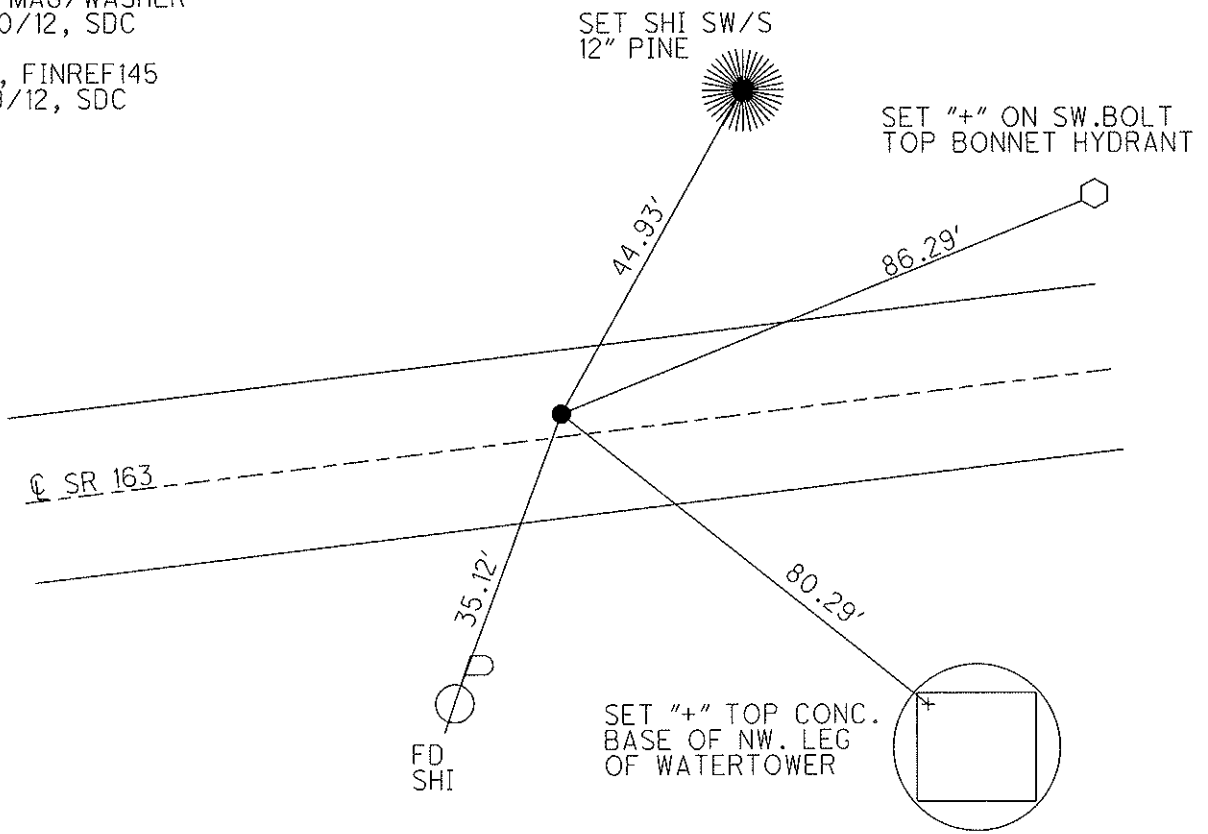
 GPS, SV130
 4/29/10, KPM

 SET MAG/WASHER
 8/30/12, SDC

 GPS, FINREF145
 9/19/12, SDC

RECORD
 P.I. Δ = 07° 26' RT.
 507+15.52
 P.K./WASHER ATOP
 R.R.SPIKE

NOTE: WEST CORP. LINE
 OF MARBLEHEAD



O.D.O.T. DISTRICT 2 SURVEY OFFICE

PERSONNEL

REFERENCE NO. 145

SHEET 29 OF 52

NOTES CANTERBURY

H.C. LOHRKE

R.C. ROUSOS

DATE 5-30-95

WEATHER FAIR

TEMP. +70°F

ROUTE S.R. 163

COUNTY OTTAWA

TOWNSHIP DANBURY

SECTION _____

T _____ R _____

Set P.K./WASHER

6-5-96

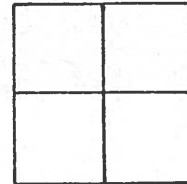
TYPE MONUMENT RR SPIKE

ON SURFACE - BELOW .2" BELOW

LEFT - PAV'T. - RIGHT 2.8' LT &

8.7' TO LT EDGE PAVEMENT

S.L.M. 1910 +25



PLAN RECORD

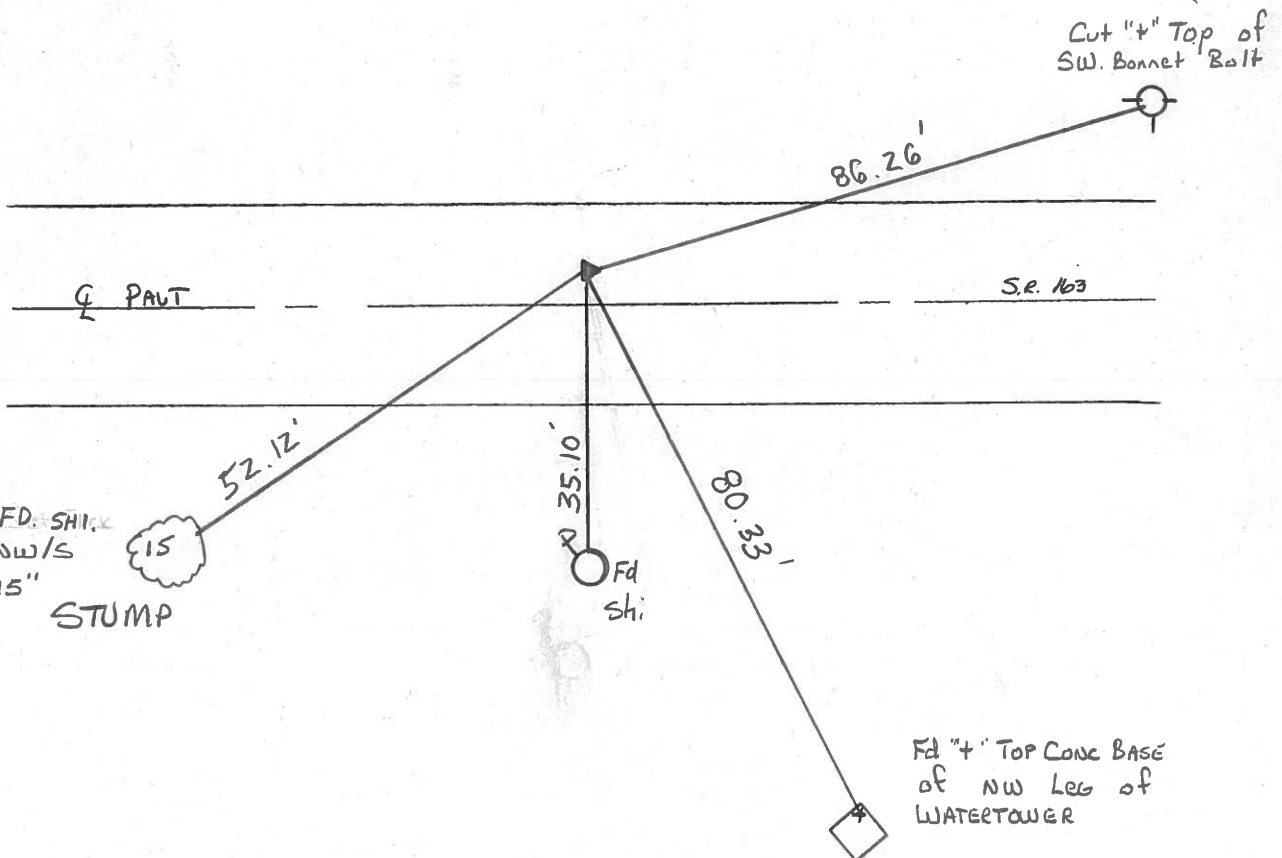
Sta 507+15.52

PI $\Delta = 07^\circ - 26' RT$

P.K./WASHER ATOP R.R SPIKE

West Corp Line

MARBLE HEAD



County Ottawa S.R. #163

Date 12/13/03

Township Danbury-Marblehead

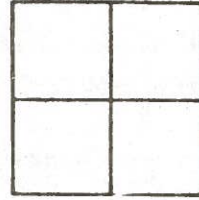
Weather sunny

Section _____

Temp. 36°

T-N, R-E

Personnel Cromin



Ripple

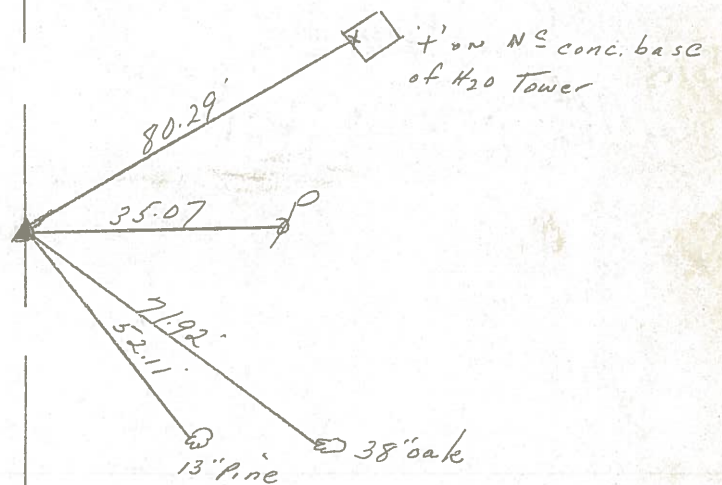
Geyman

Barbour

#145



Plan
 P.I. $\Delta = 07^{\circ}26'$ Rt.
5074 15.52
 set P.K. atop ^{15 washer} R.R. spike
 2' Lt. & Permit. - W. Corp.
 Line - Marblehead



S.R. #163

PERSONNEL TITLE PERSONNEL TITLE

COUNTY Ottawa DATE 6-11-71

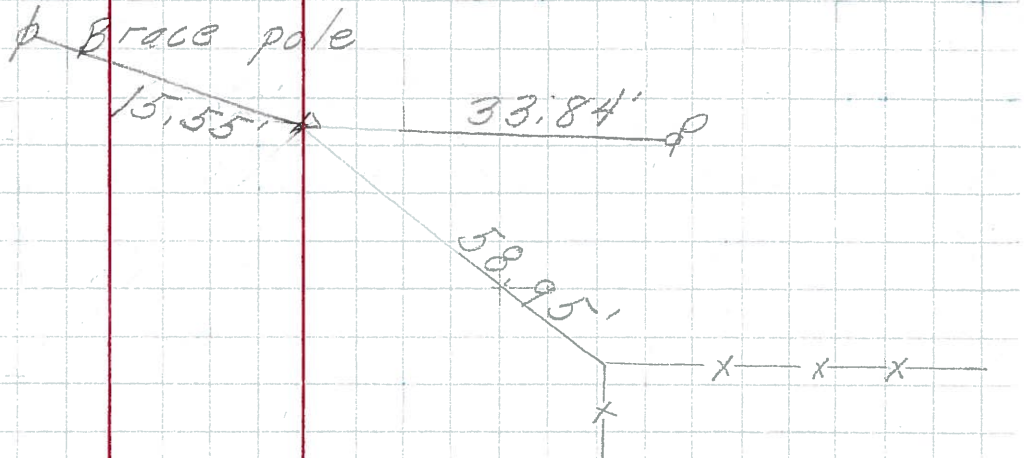
S. R. 163 WEATHER _____

SEC. 1 TEMP. _____

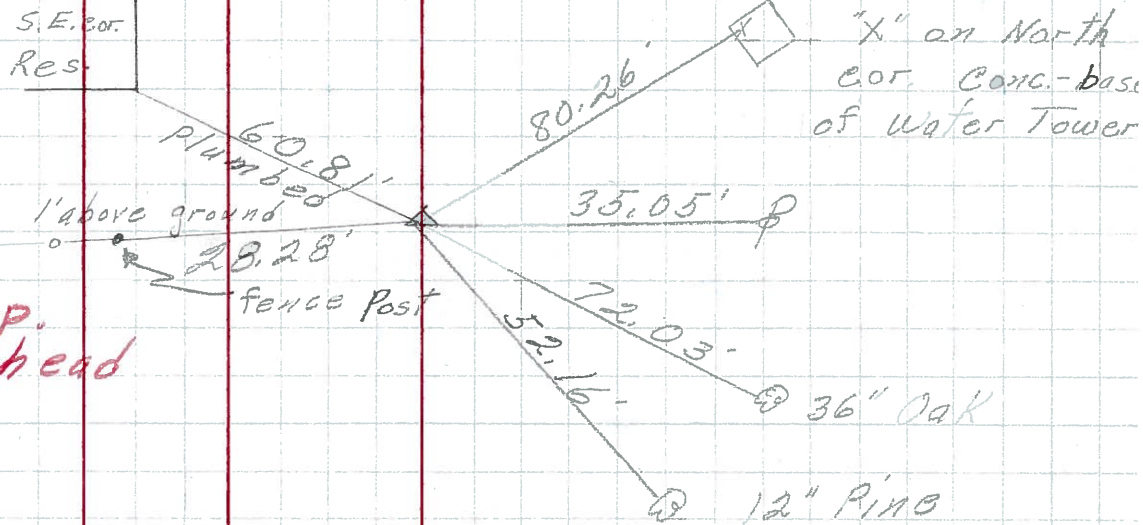
DESCRIPTION S.R. # 269 East of Marblehead JOB NO. _____

LEFT CENTER LINE RIGHT

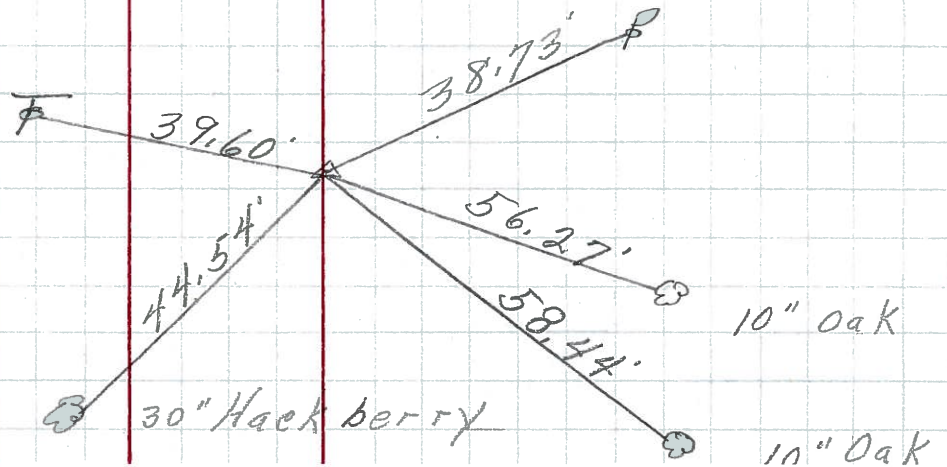
P.I. **145A**
570 + 96.55
P.K. Nail



P.I. **145**
507 + 15.52
R.R. Spk.
West Corp. of Marblehead



P.I. **144**
504 + 40.48
R.R. Spk.



PERSONNEL	TITLE	PERSONNEL	TITLE	COUNTY	Ottawa	DATE	9-12-68
Schneider		Potts		S. R.	163	WEATHER	Fair
Mosser				SEC.	S.R. #269 - East	TEMP.	70°
Barbour				Marblehead			
Redding				Ties for Control Points			
DESCRIPTION	LEFT	CENTER LINE	RIGHT	JOB NO.			

