

O.D.O.T. DISTRICT 2 SURVEY OFFICE (USE ONLY)

PERSONNEL \_\_\_\_\_ REFERENCE NO. 145 B SHEET 38 OF 66

NOTES CODER DATE 9/4/12 ROUTE SR 163  
 H.C. CODER WEATHER CLOUDY COUNTY OTTAWA  
 R.C. RHOADES TEMP. 76° TOWNSHIP DANBURY  
 SECTION 1-7

DWG BY NIESE PID PVTRAIN

NOTE:  
THIS MAP IS FOR ODOT PURPOSES ONLY  
TO INDEX REFERENCE TIES, AND DOES NOT  
REPRESENT TRUE LAND SUBDIVISION.

TYPE MONUMENT P.K./WASHER

ON SURFACE - ~~BELOW~~ ON

OFFSET ☉ PAVEMENT 13.7' ~~LT~~ : RT

2.0' RT OF RT EDGE PAVEMENT

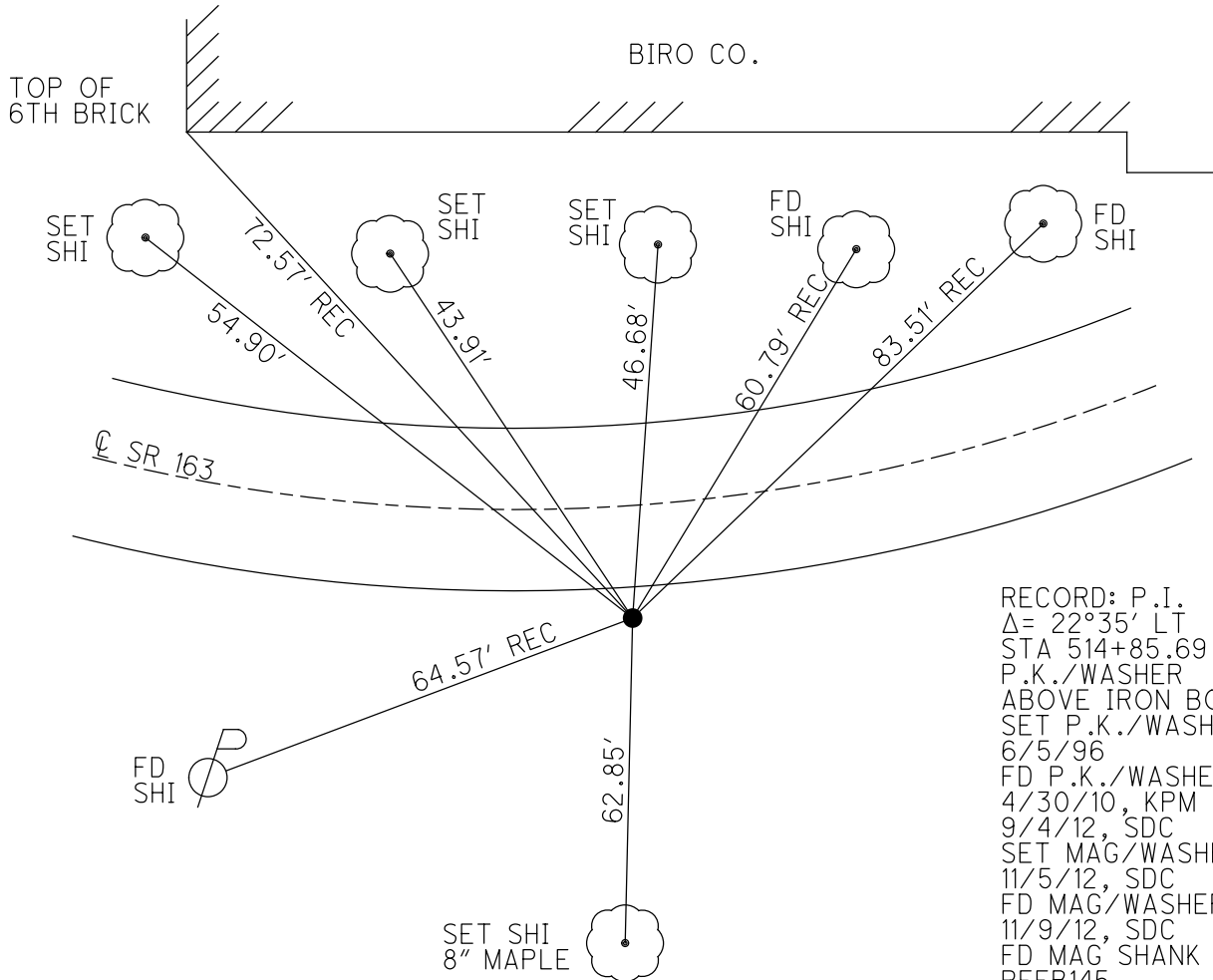
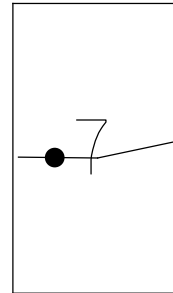
STATION: 1918+26

HORZ. DATUM: NAD83 (2011)

GEOID: NAVD88 2018

GRID: NORTHING: 682338.911

EASTING: 1903136.114

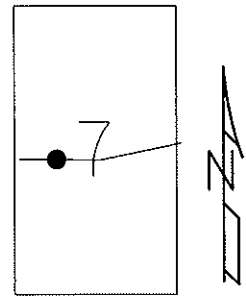


RECORD: P.I.  
 $\Delta = 22^\circ 35' \text{ LT}$   
 STA 514+85.69  
 P.K./WASHER  
 ABOVE IRON BOLT  
 SET P.K./WASHER  
 6/5/96  
 FD P.K./WASHER  
 4/30/10, KPM  
 9/4/12, SDC  
 SET MAG/WASHER  
 11/5/12, SDC  
 FD MAG/WASHER  
 11/9/12, SDC  
 FD MAG SHANK  
 REFB145  
 6/11/21, TDN  
 2/7/22, JFO

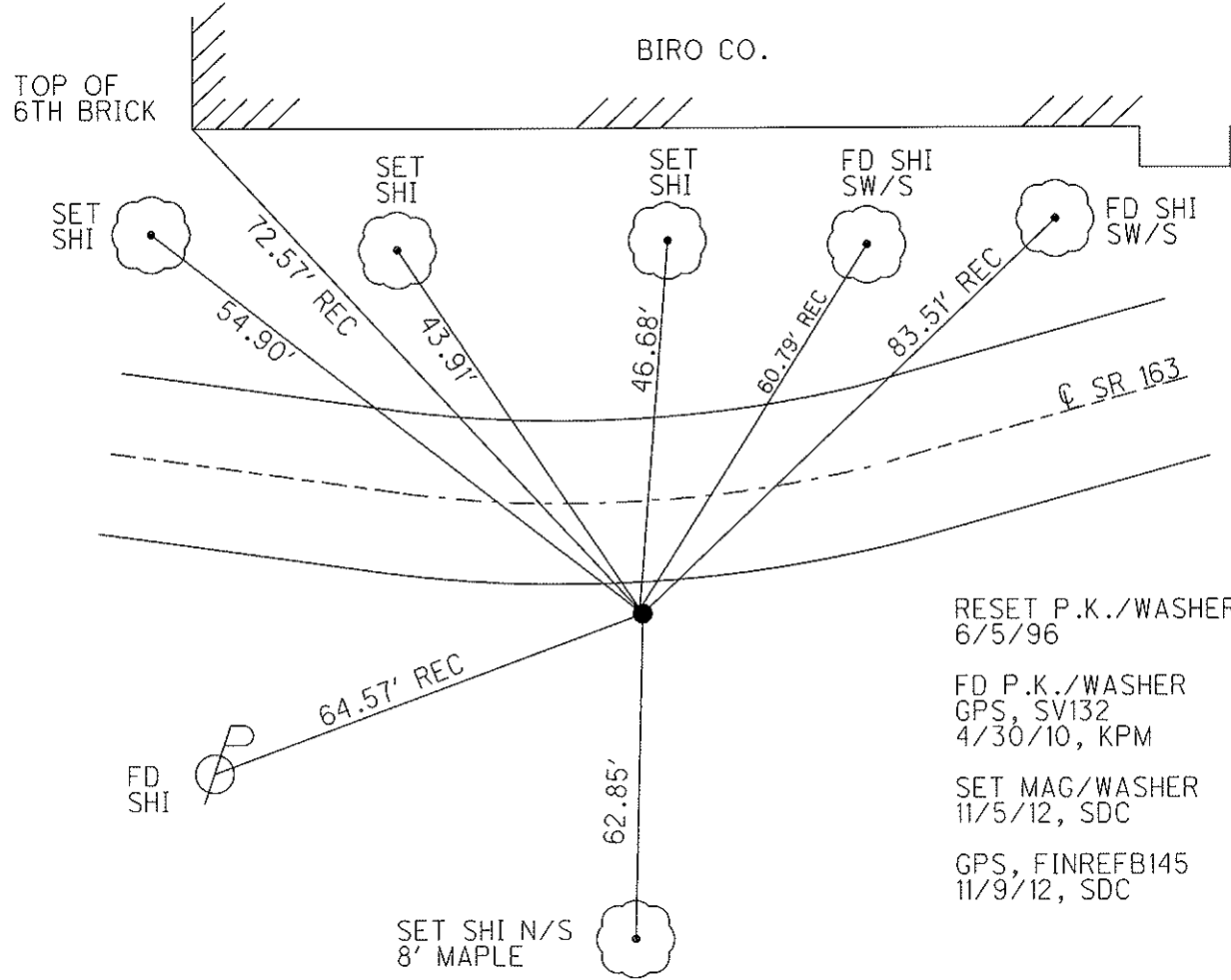
O.D.O.T. DISTRICT 2 SURVEY OFFICE (USE ONLY)

PERSONNEL	REFERENCE NO. <u>145 B</u>	SHEET <u>38</u> OF <u>63</u>
NOTES <u>CODER</u>	DATE <u>9/4/12</u>	ROUTE <u>SR 163</u>
H.C. <u>CODER</u>	WEATHER <u>CLOUDY</u>	COUNTY <u>OTTAWA</u>
R.C. <u>RHOADES</u>	TEMP. <u>76°</u>	TOWNSHIP <u>DANBURY</u>
		SECTION <u>1-7</u>

TYPE MONUMENT P.K./WASHER  
 ON SURFACE - ~~BELOW~~ ON  
~~LEFT~~ - CL PAV'T - RIGHT 13.7'  
2.0' RT TO RT EDGE PAVEMENT  
 S.L.M. 1918+26  
 Grid: Northing: 682338.889 Easting: 1903136.010



RECORD  
 P.I.  $\Delta = 22^\circ 35' LT.$   
 514+85.69  
 P.K./WASHER ATOP  
 IRON BOLT



RESET P.K./WASHER  
 6/5/96  
 FD P.K./WASHER  
 GPS, SV132  
 4/30/10, KPM  
 SET MAG/WASHER  
 11/5/12, SDC  
 GPS, FINREFB145  
 11/9/12, SDC

# O.D.O.T. DISTRICT 2 SURVEY OFFICE

PERSONNEL \_\_\_\_\_

REFERENCE NO. 145 B

SHEET 31 OF 52

NOTES CANTERBURY

H.C. LOEHRKE

R.C. Rousos

DATE 5-30-95

WEATHER FAIR

TEMP. +70°F

ROUTE S.R. 163

COUNTY OTTAWA

TOWNSHIP MARBLEHEAD

SECTION \_\_\_\_\_

T \_\_\_\_\_ R \_\_\_\_\_

Reset

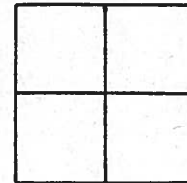
TYPE MONUMENT PK NAIL/WASHER 6-5-96

ON SURFACE - BELOW YES

LEFT - Q PAV'T. - RIGHT 13.7' R+ Q

20 RT TO RT EDGE PAVEMENT

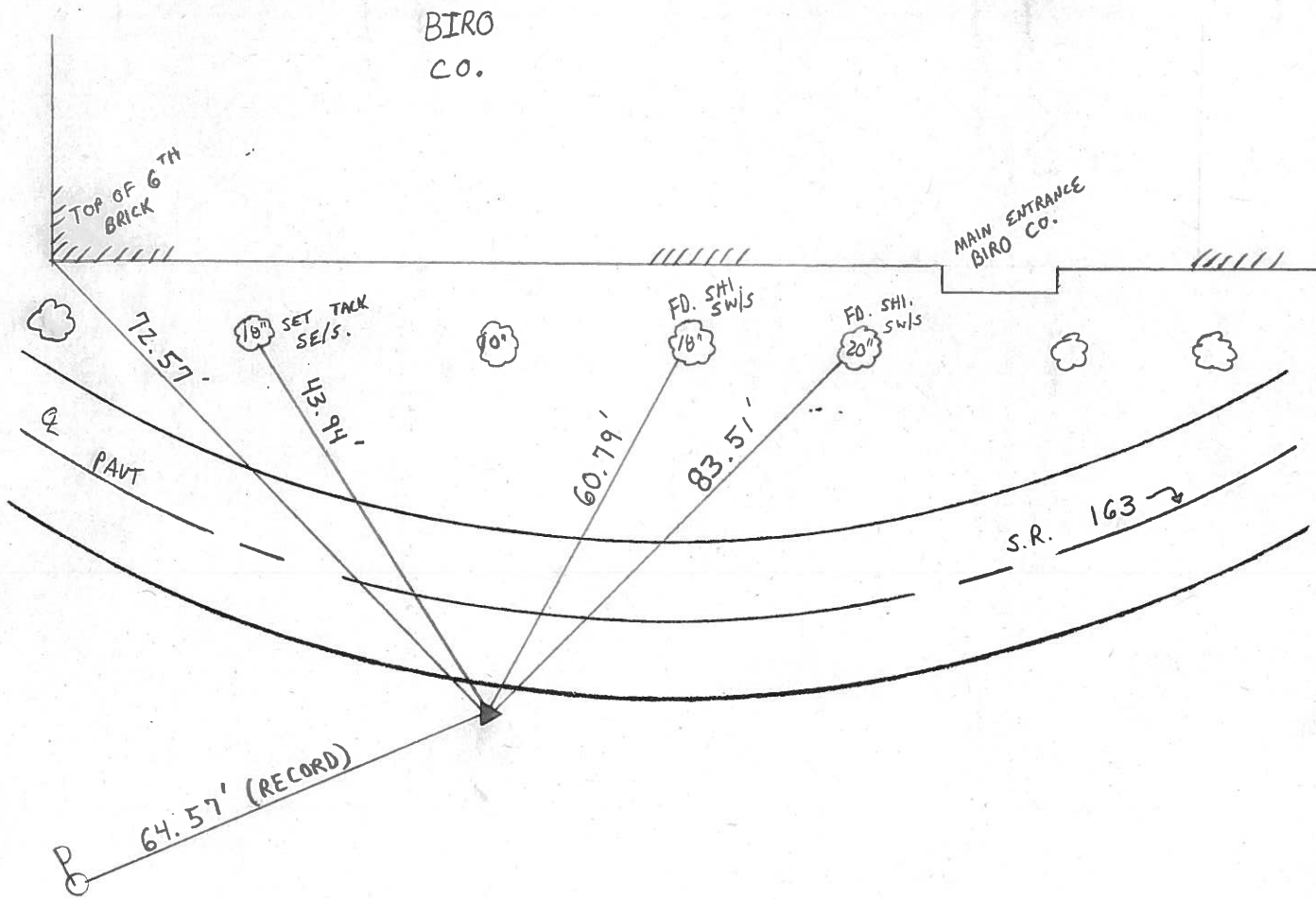
S.L.M. 1918 + 26



RECORD: P.I.  $\Delta = 22^\circ 35' \text{ LT (PLAN)}$

STA 514 + 85.69

PK/WASHER ATOP IRON BOLT.



County Ottawa S.R. #163

Date 12/13/83

Township Marblehead

Weather sunny

Section \_\_\_\_\_

Temp. 38°

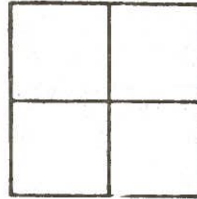
T-N, R-E

Personnel Cronin

Ripple

Seaman

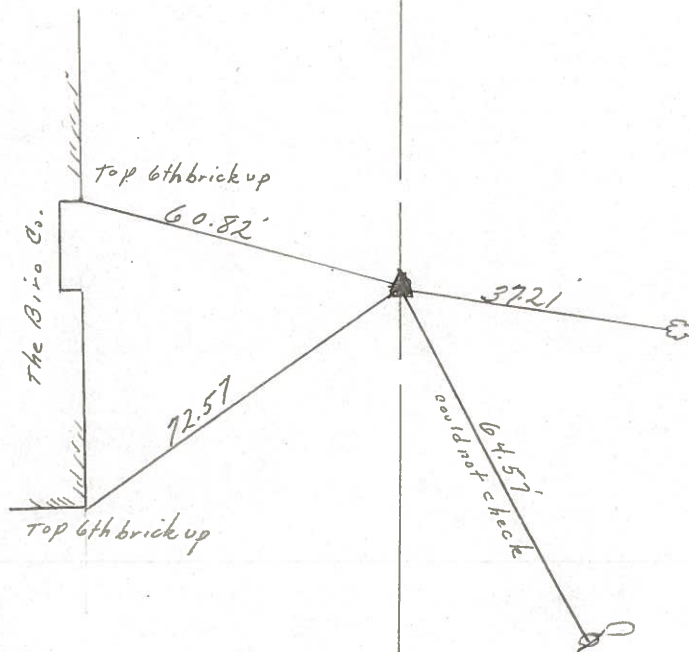
Barbour



145B



Plan  
P.I.  $\Delta = 22^\circ 35' \text{ Lt.}$   
514 + 85.69  
Set P.K. & washer atop  
I. bolt 15' Rt. R.L.E.P.



S.R. #163

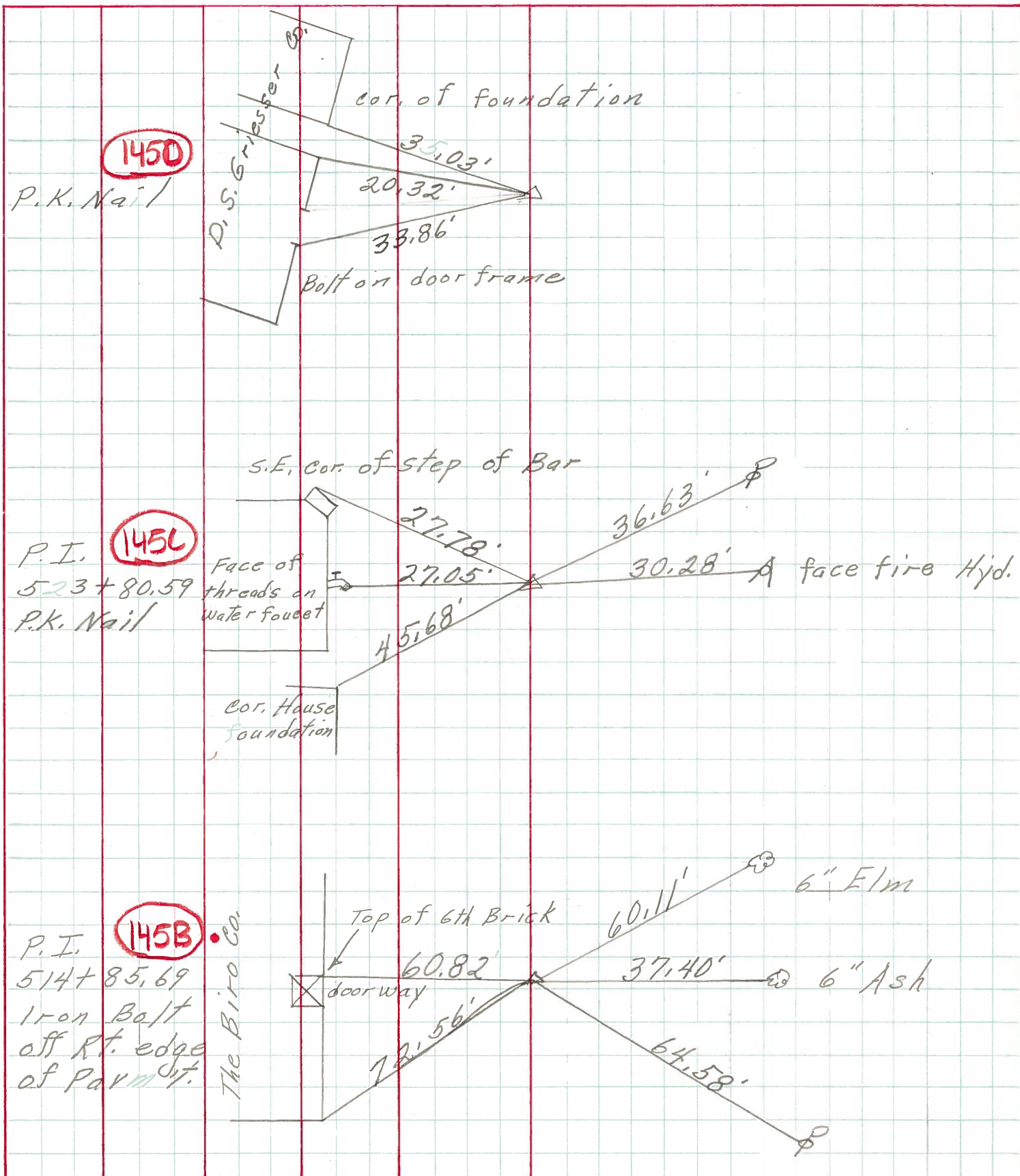
PERSONNEL TITLE PERSONNEL TITLE

COUNTY Ottawa DATE 6-11-71

S. R. 163 WEATHER

SEC. 1 TEMP.

DESCRIPTION Marblehead LEFT CENTER LINE RIGHT JOB NO.





PERSONNEL TITLE PERSONNEL TITLE  
 Schneider \_\_\_\_\_ Potts \_\_\_\_\_  
 Mosser \_\_\_\_\_  
 Barbour \_\_\_\_\_  
 Redding \_\_\_\_\_

COUNTY Ottawa DATE 9-12-68  
 S. R. 163 WEATHER Fair  
 SEC. S.R. #269 - East TEMP. 70°

DESCRIPTION Ties for Control Points JOB NO. \_\_\_\_\_

