

O.D.O.T. DISTRICT 2 SURVEY OFFICE (USE ONLY)

PERSONNEL

REFERENCE NO. 145 C

SHEET 39 OF 66

NOTES CODER DATE 9/4/12
 H.C. CODER WEATHER CLOUDY
 R.C. RHOADES TEMP. 76°

ROUTE SR 163
 COUNTY OTTAWA
 TOWNSHIP DANBURY
 SECTION 1-7

DWG BY NIESE PID PVTRAIN

NOTE:
THIS MAP IS FOR ODOT PURPOSES ONLY.
TO INDEX REFERENCE TIES, AND DOES NOT
REPRESENT TRUE LAND SUBDIVISION.

TYPE MONUMENT P.K./WASHER

ON SURFACE - ~~BELOW~~ ON

OFFSET $\text{\textcircled{C}}$ PAVEMENT 3.2' LT : ~~RT~~
8.5' TO LT EDGE PAVEMENT

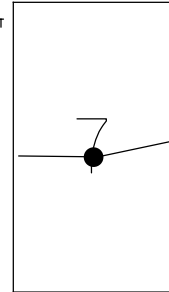
STATION: 1927+28

HORZ. DATUM: NAD83 (2011)

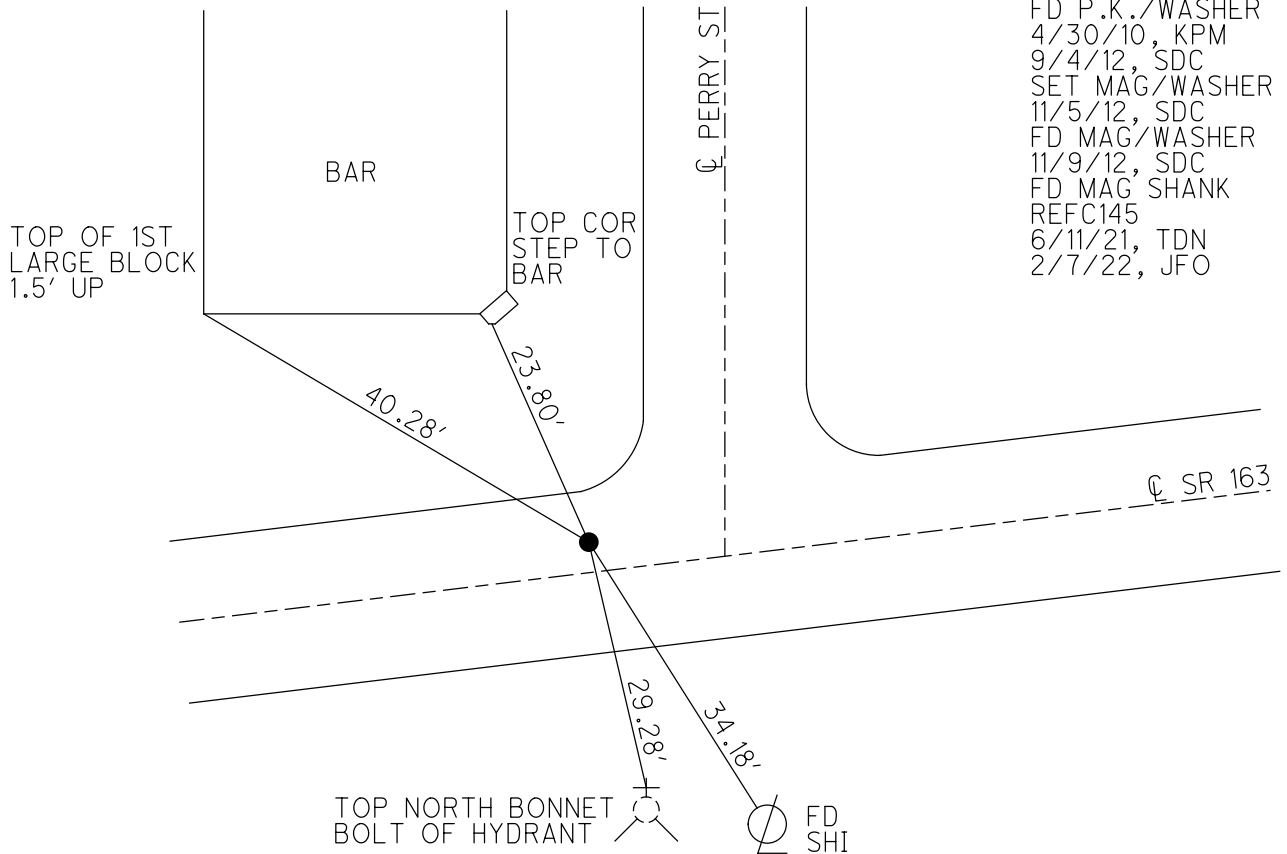
GEOID: NAVD88 2018

GRID: NORTHING: 682496.311

EASTING: 1904024.962



RECORD: P.I.
 $\Delta = 00^{\circ}20' \text{ RT}$
 STA 523+80.59
 SET P.K./WASHER
 6/5/96
 FD P.K./WASHER
 4/30/10, KPM
 9/4/12, SDC
 SET MAG/WASHER
 11/5/12, SDC
 FD MAG/WASHER
 11/9/12, SDC
 FD MAG SHANK
 REFC145
 6/11/21, TDN
 2/7/22, JFO



O.D.O.T. DISTRICT 2 SURVEY OFFICE (USE ONLY)

PERSONNEL _____

REFERENCE NO. 145 C

SHEET 39 OF 63

NOTES CODER

DATE 9/4/12

ROUTE SR 163

H.C. CODER

WEATHER CLOUDY

COUNTY OTTAWA

R.C. RHOADES

TEMP. 76°

TOWNSHIP DANBURY

SECTION 1-7

TYPE MONUMENT P.K./WASHER

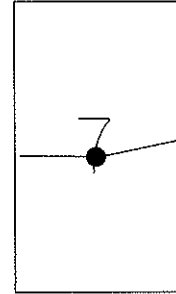
ON SURFACE - ~~BELOW~~ ON

LEFT - C PAV'T - ~~RIGHT~~ 3.2'

8.5' TO LT EDGE PAVEMENT

S.L.M. 1927+28

Grid: Northing: 682496.132 Easting: 1904024.934



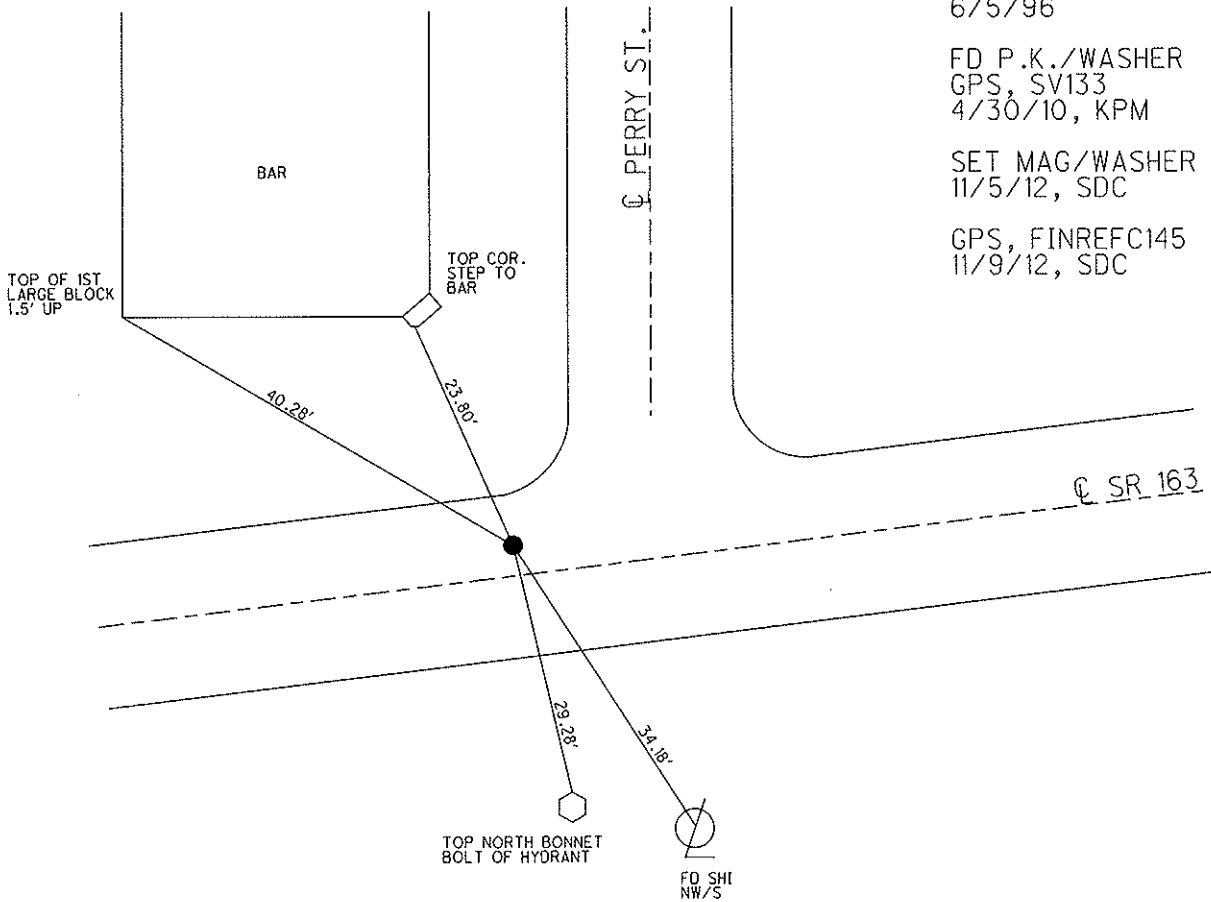
1983 RECORD (PLAN)
P.I. Δ = 00° 20' RT.
523+80.59

RESET P.K./WASHER
6/5/96

FD P.K./WASHER
GPS, SV133
4/30/10, KPM

SET MAG/WASHER
11/5/12, SDC

GPS, FINREFC145
11/9/12, SDC



O.D.O.T. DISTRICT 2 SURVEY OFFICE

PERSONNEL _____

REFERENCE NO. 145 C

SHEET 32 OF 52

NOTES CANTERBURY

H.C. LOEHKE

R.C. ROUSOS

DATE 5-30-95

WEATHER FAIR

TEMP. +70°F

ROUTE S.R. 163

COUNTY OTTAWA

TOWNSHIP MARBLEHEAD

SECTION _____

T _____ R _____

Set P.K. / WASHER
6-5-96

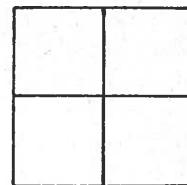
TYPE MONUMENT LG. RR SPIKE

ON SURFACE - BELOW 4" BELOW

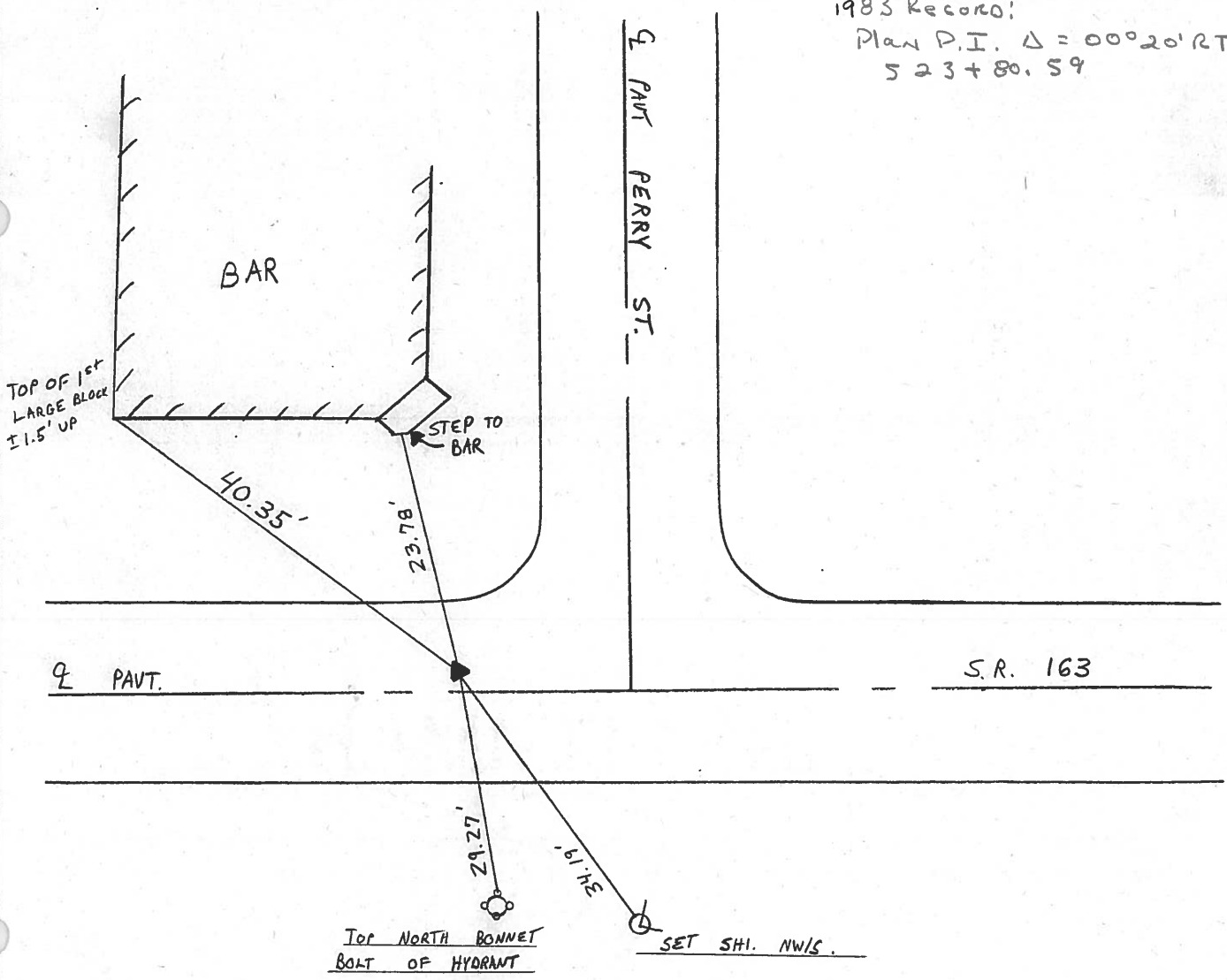
LEFT- & PAV'T. - RIGHT 3.0' LT &

8.5' TO LT EDGE PAVEMENT

S.L.M. 1927 + 20



1983 Record:
Plan P.I. $\Delta = 00^{\circ}20' RT.$
523 + 80.59



County Ottawa S.R. #163

Date 12/13/83

Township Marblehead

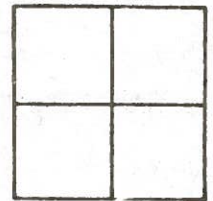
Weather sunny

Section _____

Temp. 38°

T-N, R-E

Personnel Cronin



Ripple

Geyman

Barbour

145C

Perry Street



step to bar

Plan
P.I. $\Delta = 00^{\circ} 20' \text{ Rt.}$
523+80.59
set P.K. & washer
2.0 Lt. & Point

27.78

36.63

30.28

H₂O Hydrant

27.05

Face of threads
on H₂O faucet

S.R. #163

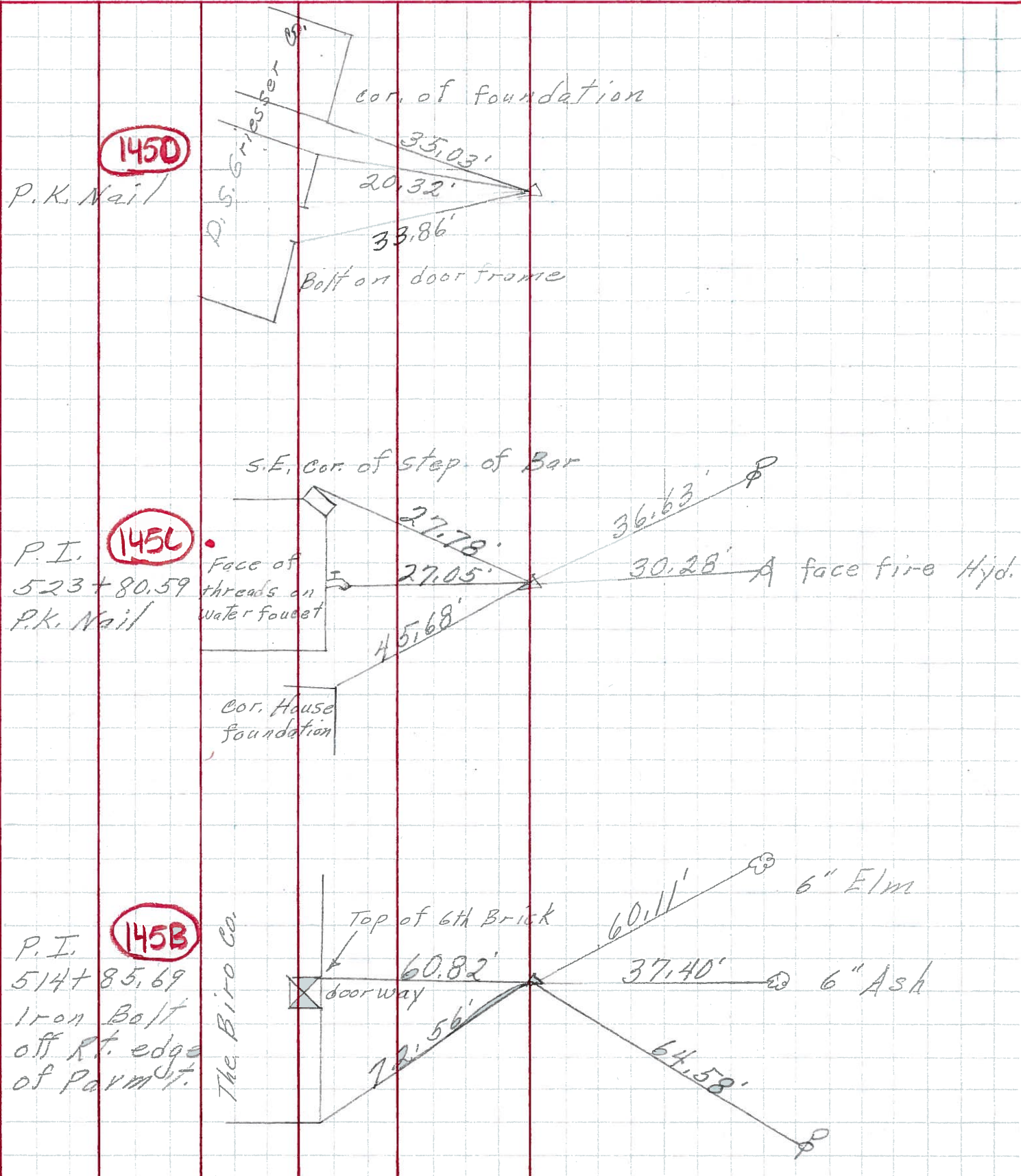
PERSONNEL TITLE PERSONNEL TITLE

COUNTY Ottawa DATE 6-11-71

S. R. 163 WEATHER

SEC. 1 TEMP.

DESCRIPTION Marblehead LEFT CENTER LINE RIGHT JOB NO.



PERSONNEL	TITLE	PERSONNEL	TITLE	COUNTY	DATE	WEATHER	TEMP.
Schneider		Potts		Ottawa	9-12-68	Fair	70°
Mosser				S. R. 163			
Barbour				SEC. S.R. #269-East			
Redding				Marblehead			

DESCRIPTION: Ties for Control Points

