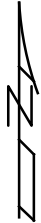
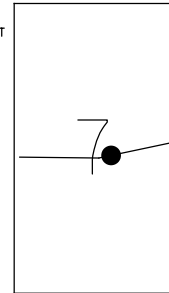


O.D.O.T. DISTRICT 2 SURVEY OFFICE (USE ONLY)

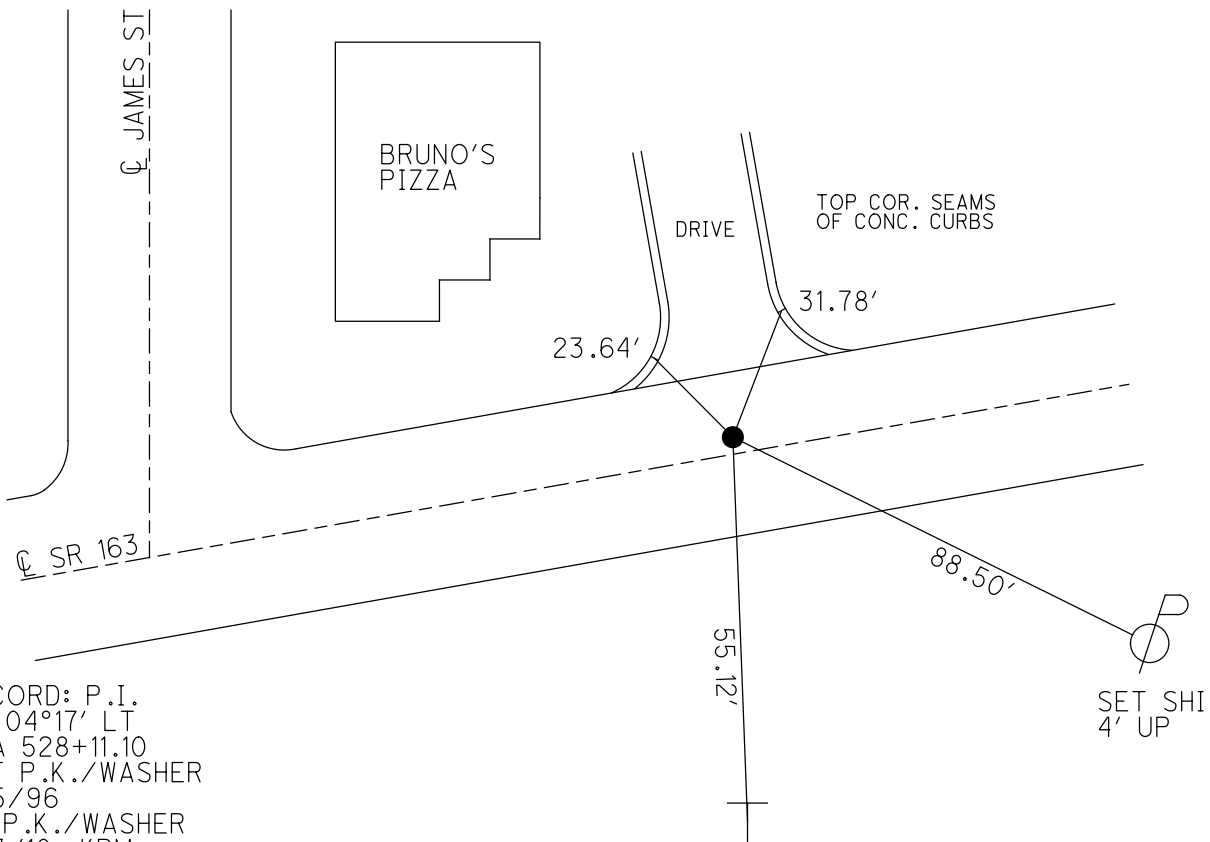
PERSONNEL \_\_\_\_\_ REFERENCE NO. 145 D SHEET 40 OF 66  
 NOTES CODER \_\_\_\_\_ DATE 9/4/12 ROUTE SR 163  
 H.C. CODER \_\_\_\_\_ WEATHER CLOUDY COUNTY OTTAWA  
 R.C. RHOADES TEMP. 76° TOWNSHIP DANBURY  
 SECTION 1-7  
 DWG BY NIESE PID PVTRAIN

NOTE: THIS MAP IS FOR ODOT PURPOSES ONLY TO INDEX REFERENCE TIES, AND DOES NOT REPRESENT TRUE LAND SUBDIVISION.



TYPE MONUMENT P.K./WASHER  
 ON SURFACE - ~~BELOW~~ ON  
 OFFSET  $\odot$  PAVEMENT 1.2' LT : ~~RT~~  
10.3' TO LT EDGE PAVEMENT  
 STATION: 1931+55

HORZ. DATUM: NAD83 (2011) GEOID: NAVD88 2018  
 GRID: NORTHING: 682567.725 EASTING: 1904445.145



RECORD: P.I.  
 $\Delta = 04^{\circ}17'$  LT  
 STA 528+11.10  
 SET P.K./WASHER  
 6/5/96  
 FD P.K./WASHER  
 5/3/10, KPM  
 9/4/12, SDC  
 SET MAG/WASHER  
 11/5/12, SDC  
 FD MAG/WASHER  
 11/9/12, SDC  
 REFD145  
 6/11/21, TDN  
 2/7/22, JFO

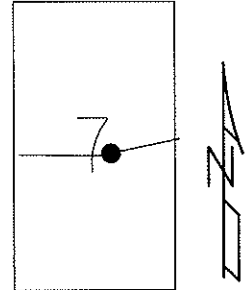
1' UP SIGN  
 POST FACE.  
 "NO PARKING"

SET SHI  
 4' UP

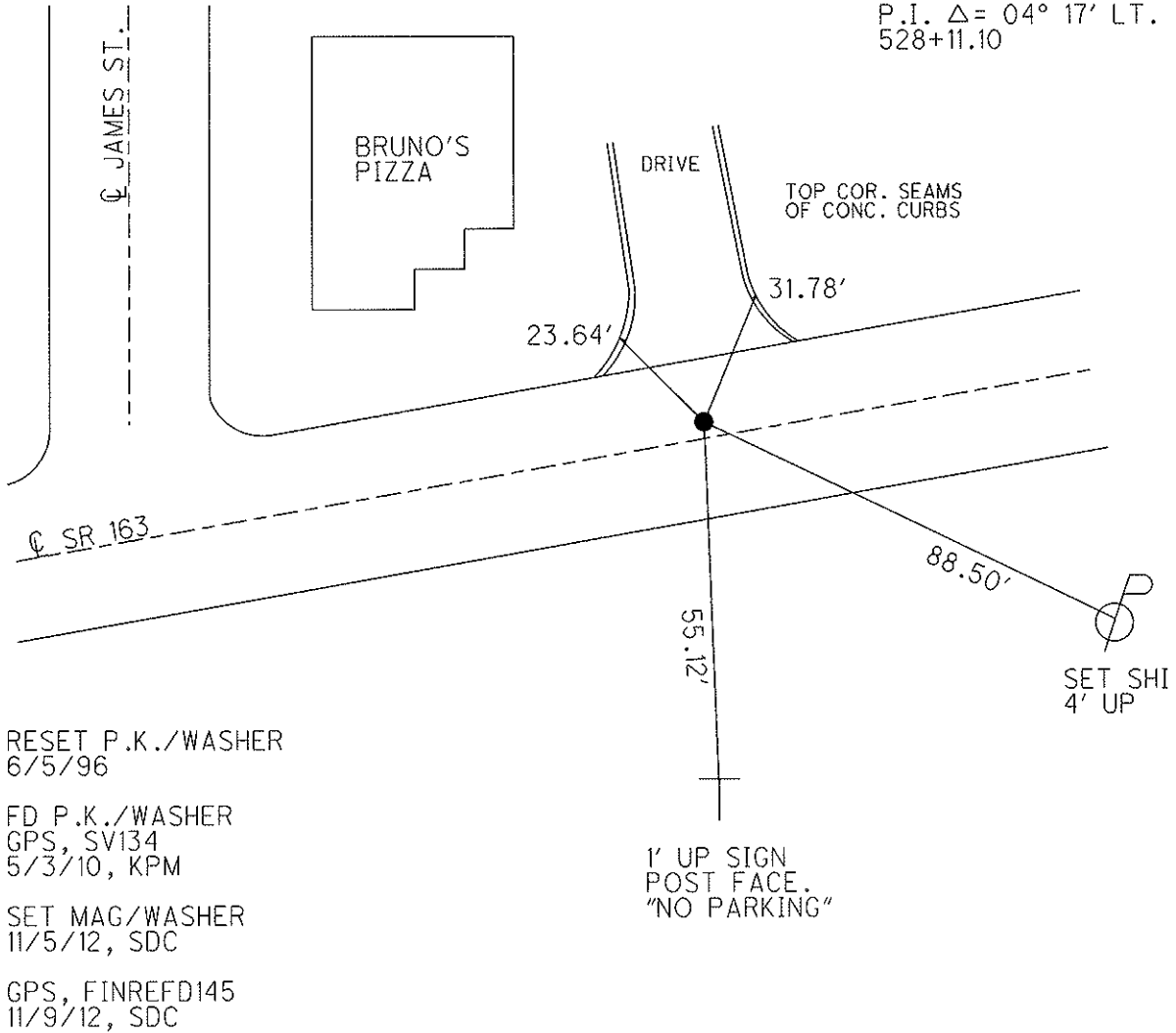
O.D.O.T. DISTRICT 2 SURVEY OFFICE (USE ONLY)

PERSONNEL \_\_\_\_\_ REFERENCE NO. 145 D SHEET 40 OF 63  
 NOTES CODER DATE 9/4/12 ROUTE SR 163  
 H.C. CODER WEATHER CLOUDY COUNTY OTTAWA  
 R.C. RHOADES TEMP. 76° TOWNSHIP DANBURY  
 SECTION 1-7

TYPE MONUMENT P.K./WASHER  
 ON SURFACE - ~~BELOW~~ ON \_\_\_\_\_  
 LEFT - ☐ PAV'T - ~~RIGHT~~ 1.2'  
10.3' TO LT EDGE PAVEMENT  
 S.L.M. 1931+55  
 Grid: Northing: 682567.623 Easting: 1904445.109



RECORD  
 P.I. Δ = 04° 17' LT.  
 528+11.10



# O.D.O.T. DISTRICT 2 SURVEY OFFICE

PERSONNEL

REFERENCE NO. 145D

SHEET 33 OF 52

NOTES CANTERBURY

H.C. LOEHRKE

R.C. ROUSOS

DATE 6-5-95

WEATHER SUNNY

TEMP. +76°F

ROUTE S.R. 163

COUNTY OTTAWA

TOWNSHIP MARBLEHEAD

SECTION \_\_\_\_\_

T \_\_\_\_\_ R \_\_\_\_\_

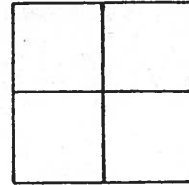
TYPE MONUMENT PK NAIL / WASHER <sup>Reset</sup> 6-5-96

ON SURFACE - BELOW YES

LEFT- & PAV'T. - RIGHT 1.2' LT &

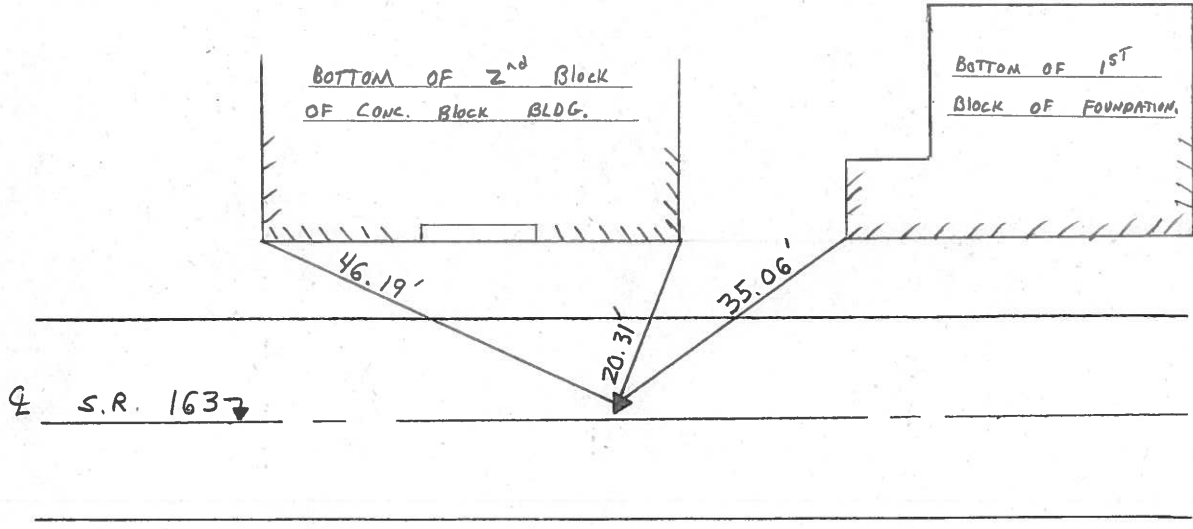
10.3' TO LT EDGE PAVEMENT

S.L.M. 1931 +55



RECORD: P.I.  $\Delta = 04^\circ 17'$  LT.

STA 528 +11.10



County Ottawa S.R. #163

Date 12/13/83

Township Marblehead

Weather sunny

Section     

Temp. 38°

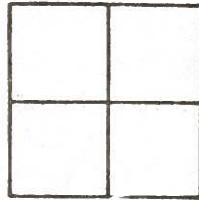
T-N, R-E

Personnel Cronin

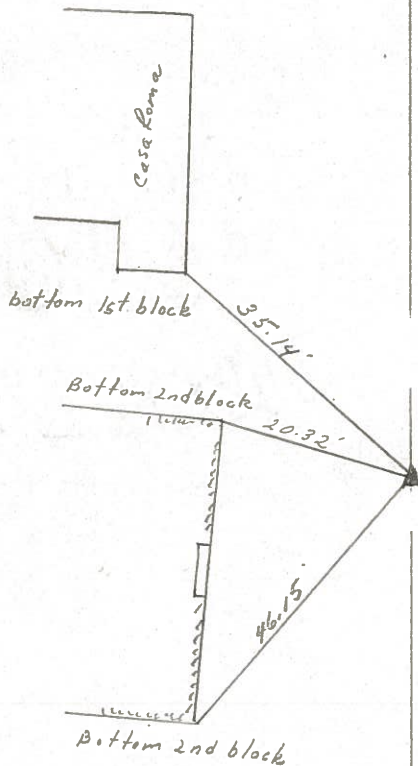
Ripple

Geyman

Barbour



145D



Plan  
 P.I.  $A=04^{\circ}17'Lt.$   
 528+11.10  
 Set P.K. & washer 1.0'  
 Lt. & Permit.

S.R. #163

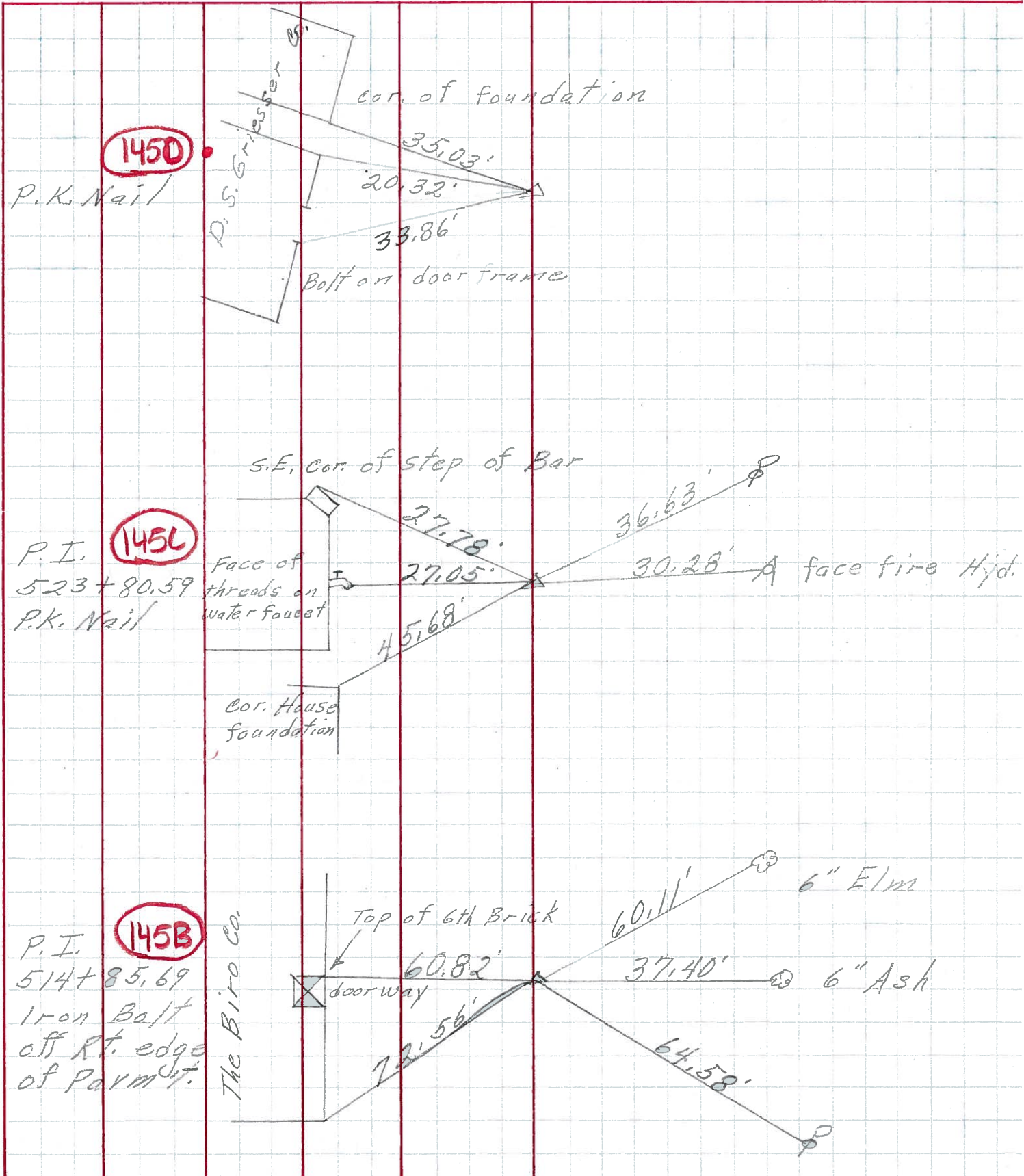
PERSONNEL TITLE PERSONNEL TITLE

COUNTY Ottawa DATE 6-11-71

S. R. 163 WEATHER

SEC. 1 TEMP.

DESCRIPTION Marblehead LEFT CENTER LINE RIGHT JOB NO.



PERSONNEL	TITLE	PERSONNEL	TITLE	COUNTY	DATE	WEATHER	TEMP.
Schneider		Potts		Ottawa	9-12-68	Fair	70°
Mosser				S. R. 163			
Barbour				SEC. S.R. #269-East			
Redding				Marblehead			

DESCRIPTION Ties for Control Points JOB NO. \_\_\_\_\_

