

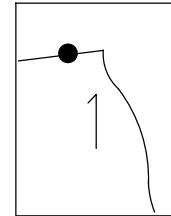
O.D.O.T. DISTRICT 2 SURVEY OFFICE (USE ONLY)

PERSONNEL \_\_\_\_\_ REFERENCE NO. 147 SHEET 46 OF 66  
 NOTES CODER DATE 9/4/12 ROUTE SR 163  
 H.C. CODER WEATHER CLOUDY COUNTY OTTAWA  
 R.C. RHOADES TEMP. 75° TOWNSHIP DANBURY  
 DWG BY NIESE PID PVTRAIN SECTION 1-1

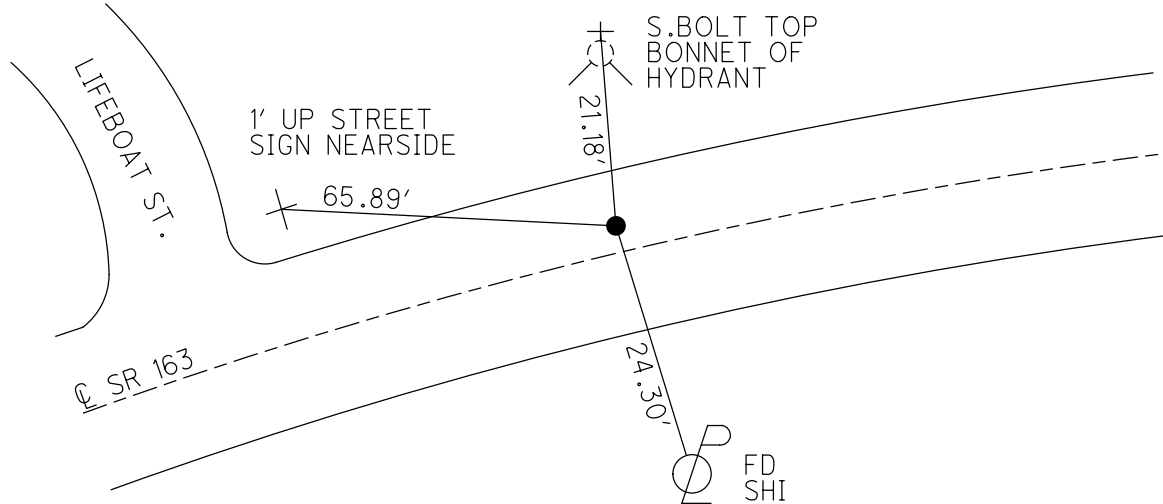
TYPE MONUMENT P.K./WASHER  
 ON SURFACE - ~~BELOW~~ ON  
 OFFSET 7.5' TO LT EDGE PAVEMENT  
 STATION: 1968+71

HORZ.DATUM: NAD83 (2011) GEOID: NAVD88 2018  
 GRID: NORTHING: 682910.775 EASTING: 1908107.891

NOTE:  
THIS MAP IS FOR ODOT PURPOSES ONLY  
TO INDEX REFERENCE TIES, AND DOES NOT  
REPRESENT TRUE LAND SUBDIVISION.



RECORD: P.I.  
 $\Delta = 16^{\circ}15' RT$   
 STA 565+22.21  
 SET P.K./WASHER  
 OVER IPIN  
 3.0' LT  $\text{\textcircled{C}}$  PAV'T  
 SET P.K./WASHER  
 6/5/96, MC  
 FD P.K./WASHER  
 5/3/10, KPM  
 9/4/12, SDC  
 SET MAG/WASHER  
 11/6/12, SDC  
 FD MAG/WASHER  
 11/9/12, SDC  
 FD P.K./WASHER  
 REF147  
 6/11/21, TDN  
 2/7/22, JFO



O.D.O.T. DISTRICT 2 SURVEY OFFICE (USE ONLY)

PERSONNEL \_\_\_\_\_ REFERENCE NO. 147 SHEET 46 OF 63

NOTES CODER \_\_\_\_\_ DATE 9/4/12 ROUTE SR 163

H.C. CODER \_\_\_\_\_ WEATHER CLOUDY COUNTY OTTAWA

R.C. RHOADES TEMP. 75° TOWNSHIP DANBURY

SECTION 1-1

TYPE MONUMENT \_\_\_\_\_ P.K./WASHER \_\_\_\_\_

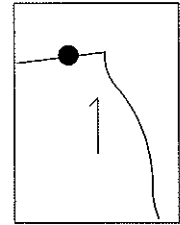
ON SURFACE - ~~BELOW~~ \_\_\_\_\_ ON \_\_\_\_\_

LEFT - ☉ PAV'T - ~~RIGHT~~ 3' \_\_\_\_\_

7.5' TO LT. EDGE PAVEMENT

S.L.M. 1968+71

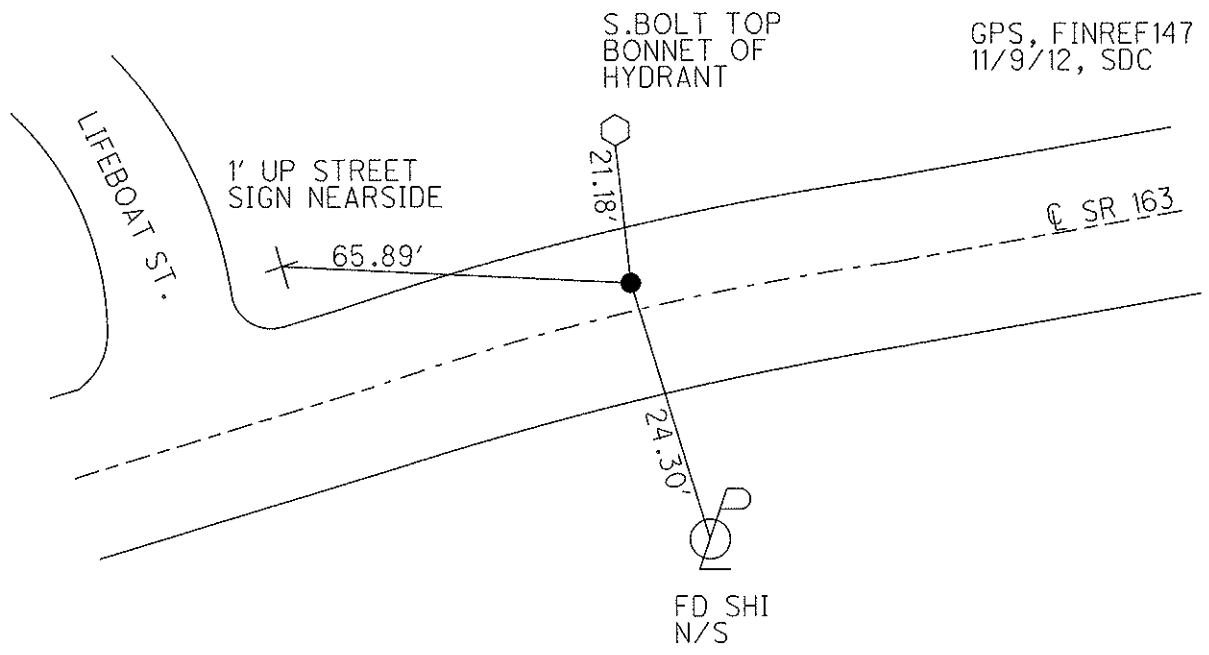
Grid: Northing: 682910.734 Easting: 1908107.870



RECORD  
 P.I.  $\Delta = 16^\circ 15' RT.$   
 565+22.21  
 SET P.K./WASHER  
 ATOP IPIN  
 3.0' LT. ☉ PAV'T.

RESET P.K./WASHER  
 6/5/96, MC  
 FD P.K./WASHER  
 GPS, SV140  
 5/3/10, KPM

SET MAG/WASHER  
 11/6/12, SDC



# O.D.O.T. DISTRICT 2 SURVEY OFFICE

PERSONNEL

REFERENCE NO. 147

SHEET 39 OF 52

NOTES CANTERBURY

H.C. LOEHRKE

R.C. ROUSOS

DATE 6-5-95

WEATHER SUNNY

TEMP. +75°F

ROUTE S.R. 163

COUNTY OTTAWA

TOWNSHIP MARBLEHEAD

SECTION \_\_\_\_\_

T \_\_\_\_\_ R \_\_\_\_\_

Reset

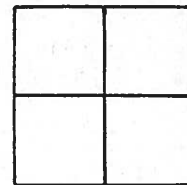
TYPE MONUMENT PK NAIL / WASHER 6-5-96

ON SURFACE - ~~BELOW~~ YES

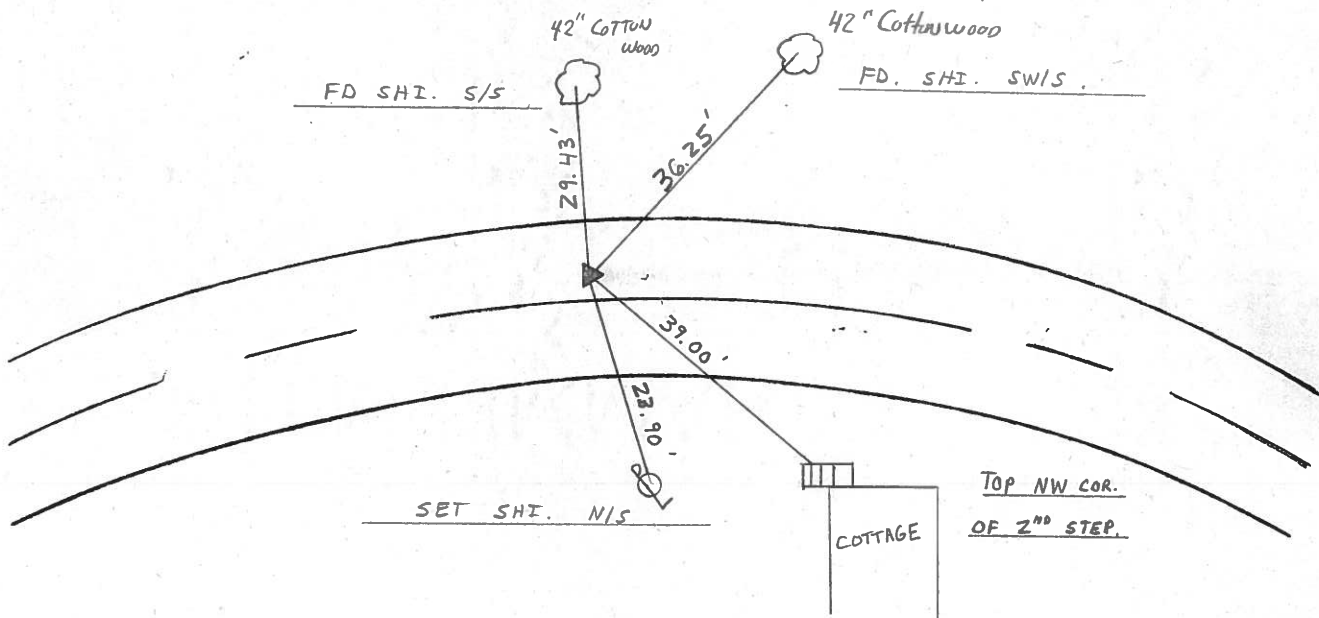
LEFT-~~☉~~ PAVT. - ~~RIGHT~~ 3.0' LT ☉

7.5' TO LT EDGE PAVEMENT

S.L.M. 1968 + 71



RECORD : P.I.  $\Delta = 16^{\circ} 15'$  RT.  
 STA 565 + 22.21  
 SET PK/WASHER ATOP I. PIN  
3.0' LT OF ☉ PAVT.



Q.D.O.T. DISTRICT 2 SURVEY OFFICE

SHEET 38 OF

County Ottawa S.R. #163

Date 12/13/83

Township Marblehead

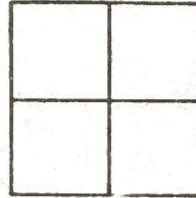
Weather overcast

Section     

Temp. 40°

T-N, R-E

Personnel Cronin

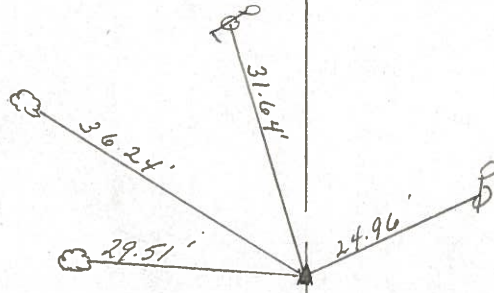


Ripple

Geyman

Barbour

147



Plan  
P.I.  $\Delta = 16^{\circ}15'$  Rt.  
565 + 22.21  
set P.K. & washer atop  
I.P. in ?? 3' Lt. of & Point.

S.S.R. #163

PERSONNEL TITLE PERSONNEL TITLE

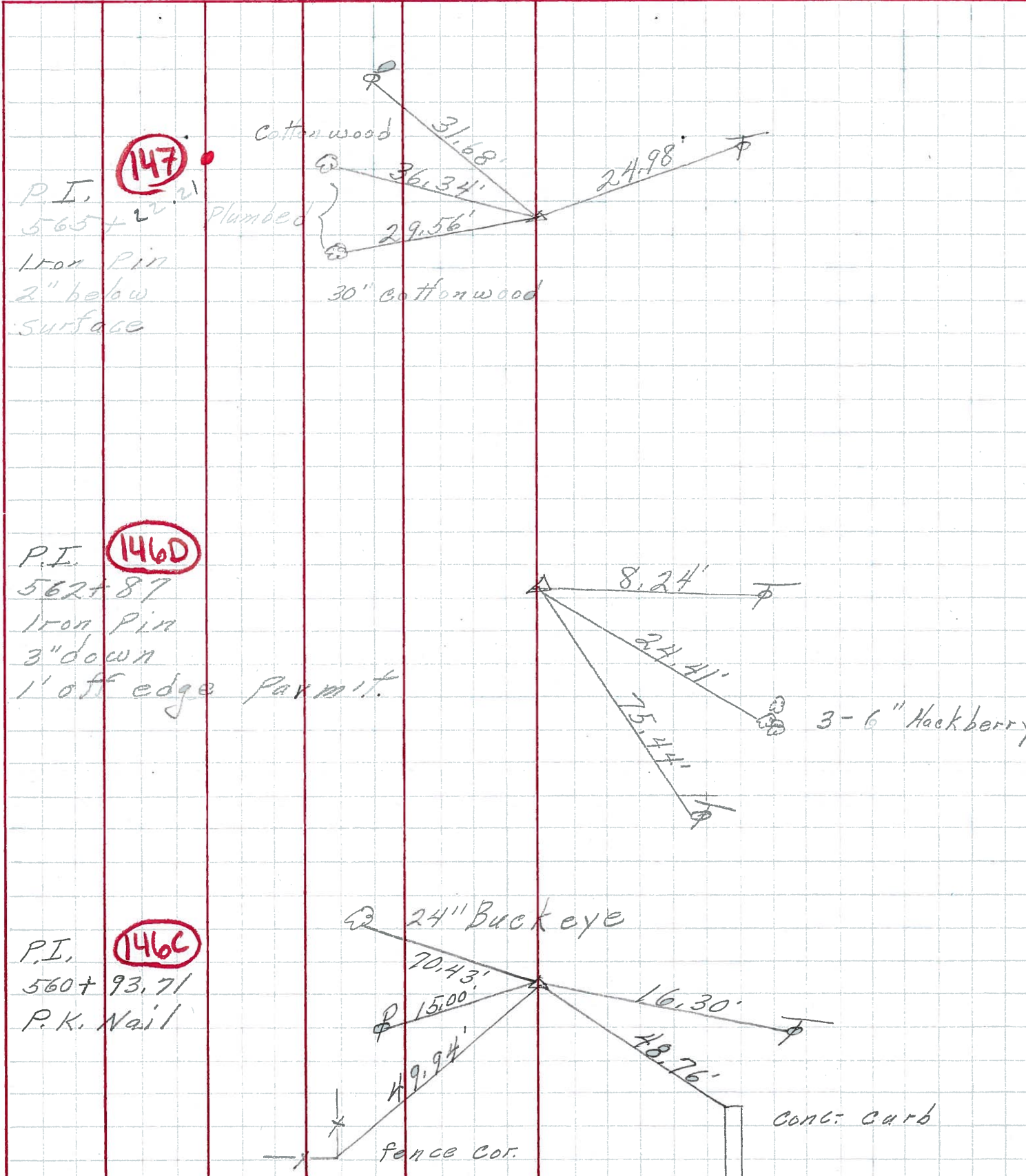
COUNTY Ottawa DATE 6-14-71

S. R. 163 WEATHER

SEC. 1 TEMP.

DESCRIPTION Marble head JOB NO.

LEFT CENTER LINE RIGHT



PERSONNEL	TITLE	PERSONNEL	TITLE	COUNTY	DATE
Schneider		Potts		Ottawa	9-12-68
Mosser				S. R. 163	WEATHER Fair
Barbour				SEC. Marble head	TEMP. 70°
Redding					

DESCRIPTION Tie for Control Points JOB NO. \_\_\_\_\_

