

O.D.O.T. DISTRICT 2 SURVEY OFFICE (USE ONLY)

PERSONNEL _____ REFERENCE NO. 147 A SHEET 47 OF 66
 NOTES CODER _____ DATE 9/4/12 ROUTE SR 163
 H.C. CODER _____ WEATHER CLOUDY COUNTY OTTAWA
 R.C. RHOADES TEMP. 75° TOWNSHIP DANBURY
 SECTION 1-1

DWG BY NIESE PID PVTRAIN

TYPE MONUMENT P.K./WASHER

ON SURFACE - ~~BELOW~~ ON

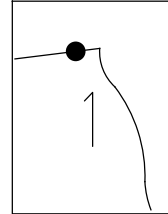
OFFSET 6.5' LT : ~~RT~~
4.9' TO LT EDGE PAVEMENT

STATION: 1972+95

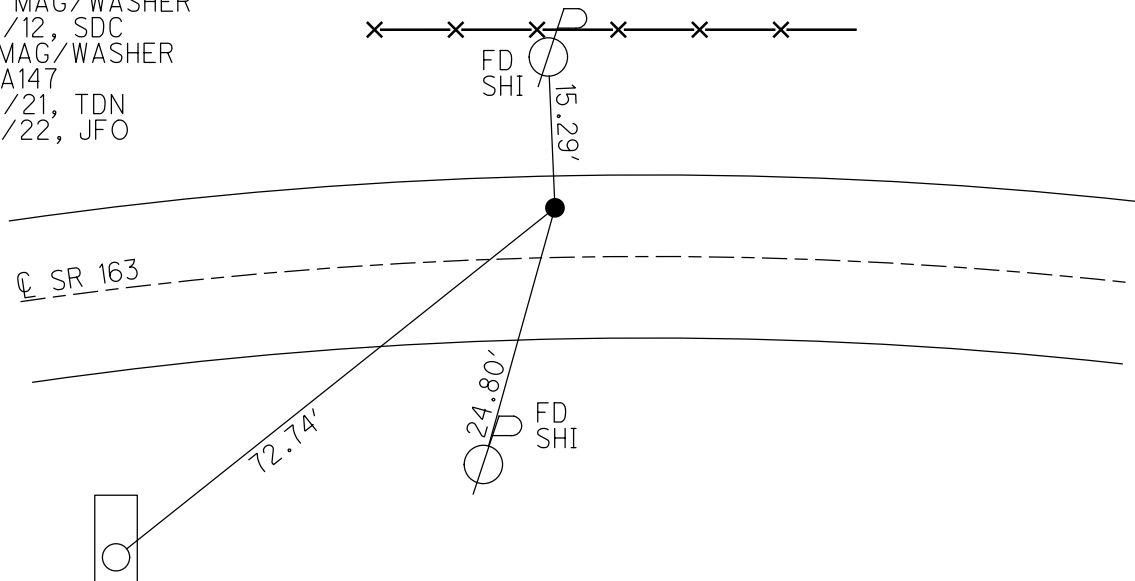
HORZ. DATUM: NAD83 (2011) GEOID: NAVD88 2018

GRID: NORTHING: 682962.803 EASTING: 1908534.391

NOTE:
THIS MAP IS FOR ODOT PURPOSES ONLY
TO INDEX REFERENCE TIES, AND DOES NOT
REPRESENT TRUE LAND SUBDIVISION.



RECORD: P.I.
 $\Delta = 14^{\circ}02' RT$
 STA 596+50.76
 SET P.K./WASHER
 5.5' LT \odot PAV'T
 SET P.K./WASHER
 6/5/96, MC
 FD P.K./WASHER
 5/3/10, KPM
 9/4/12, SDC
 SET MAG/WASHER
 11/8/12, SDC
 FD MAG/WASHER
 REFA147
 6/11/21, TDN
 2/7/22, JFO

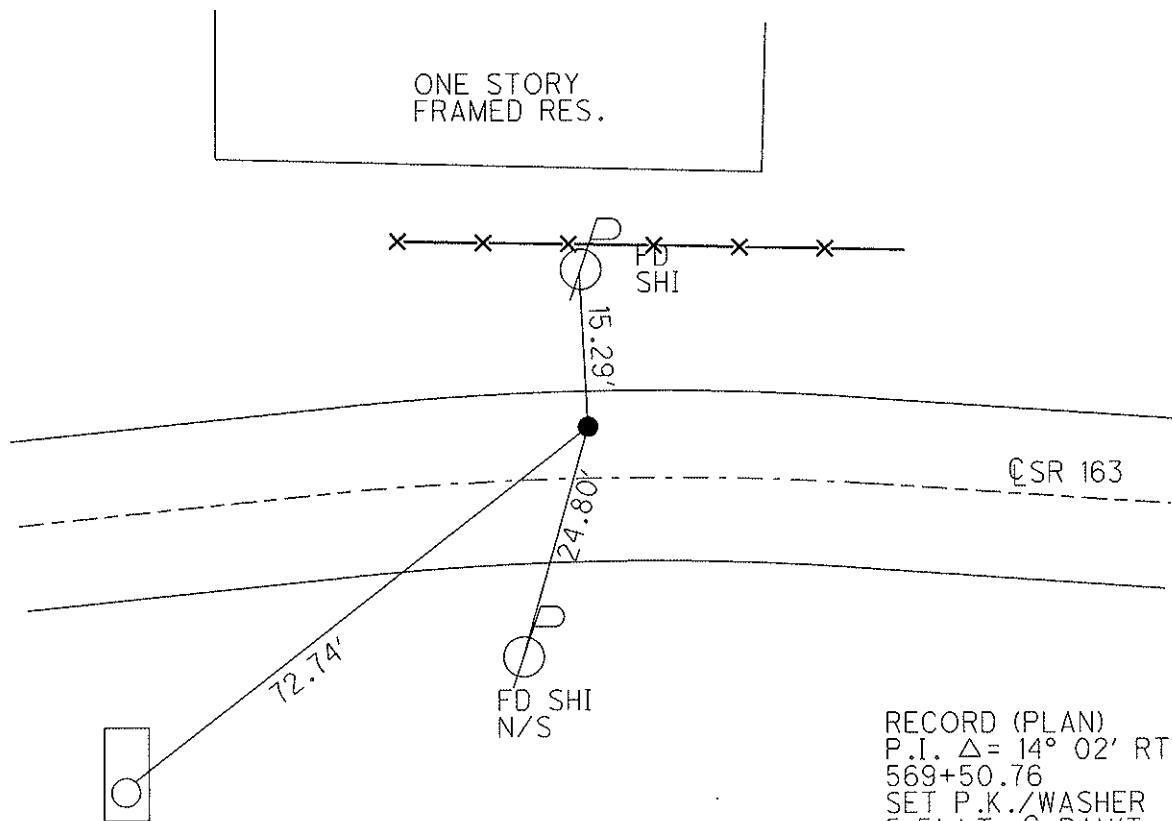
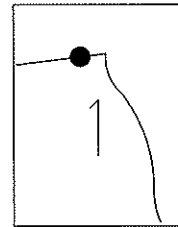


SURF MOTEL
 SIGN POST AT
 BASE, NEAR SIDE

O.D.O.T. DISTRICT 2 SURVEY OFFICE (USE ONLY)

PERSONNEL	REFERENCE NO. <u>147 A</u>	SHEET <u>47</u> OF <u>63</u>
NOTES	DATE <u>9/4/12</u>	ROUTE <u>SR 163</u>
H.C. <u>CODER</u>	WEATHER <u>CLOUDY</u>	COUNTY <u>OTTAWA</u>
R.C. <u>RHOADES</u>	TEMP. <u>75°</u>	TOWNSHIP <u>DANBURY</u>
		SECTION <u>1-1</u>

TYPE MONUMENT P.K./WASHER
 ON SURFACE - ~~BELOW~~ ON
 LEFT - ☉ PAV'T - ~~RIGHT~~ 6.5'
4.9' TO LT. EDGE PAVEMENT
 S.L.M. 1972+95
 Grid: Northing: 682962.862 Easting: 1908534.363



SURF MOTEL
SIGN POST AT
BASE, NEARSIDE

RECORD (PLAN)
 P.I. $\Delta = 14^\circ 02'$ RT.
 569+50.76
 SET P.K./WASHER
 5.5' LT. ☉ PAV'T

RESET P.K./WASHER
 6/5/96, MC
 FD P.K./WASHER
 GPS, SV141
 5/3/10, KPM

SET MAG/WASHER
 GPS, FINREFA147
 11/8/12, SDC

O.D.O.T. DISTRICT 2 SURVEY OFFICE

PERSONNEL

REFERENCE NO. 147A

SHEET 40 OF 52

NOTES Rousos

H.C. LOEHRKE

DATE 6-5-95

ROUTE SR 163

R.C. Rousos

WEATHER CLEAR

COUNTY OTTAWA

CANTERBURY

TEMP. 75°

TOWNSHIP MARBLEHEAD

SECTION _____

T _____ R _____

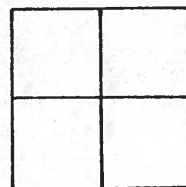
TYPE MONUMENT P.K. Set P.K. / WASHER 6-5-96

~~ON SURFACE~~ - BELOW 1" BELOW

LEFT- & PAV'T. - ~~RIGHT~~ 5.9' LT &

5.3 TO LT EDGE PAVEMENT

S.L.M. 1972+95

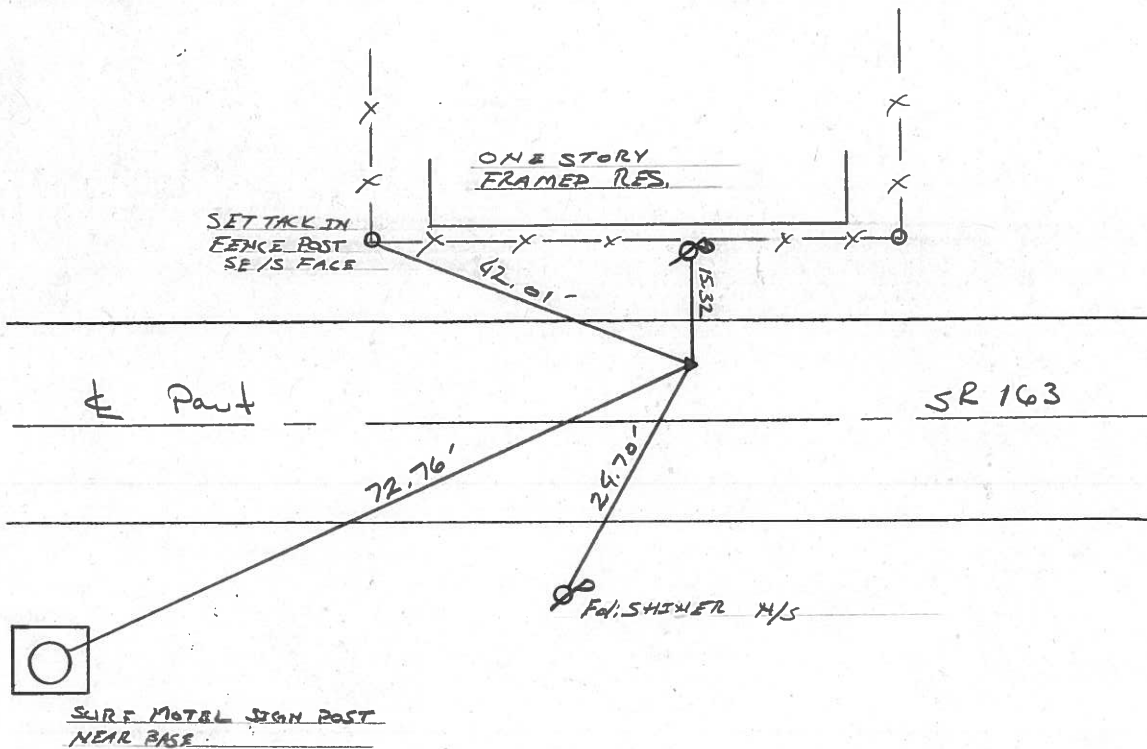


PI. PLAN $\Delta = 19^{\circ}02' RT$

569+50.76

SET PK & WASHER 5.5'

LT & PAVT.



County Ottawa S.R. #163

Date 12/13/83

Township Marblehead

Weather overcast

Section _____

Temp. 40°

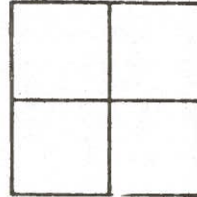
T-N, R-E

Personnel Cronin

Ripple

Geyman

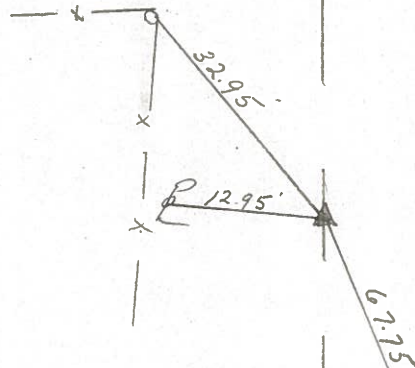
Barbour



147A



Plan
P.I. $\Delta = 14^{\circ}02'$ Rt.
569 + 50.76
set PK & washer 5.5'
Lt. & Permit.



Bottom 3rd brick
surf Motel
Sign

S.R. #163

PERSONNEL TITLE PERSONNEL TITLE

COUNTY Ottawa DATE 6-14-71

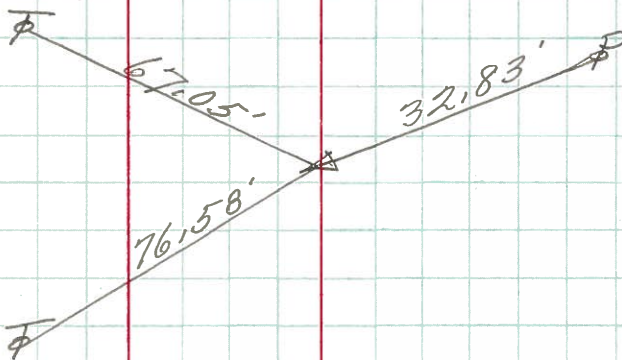
S. R. 163 WEATHER

JANBURY TWP. SEC. 1 TEMP.

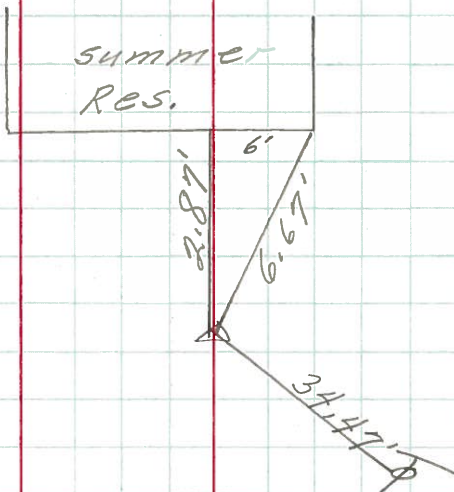
DESCRIPTION Marblehead JOB NO.

LEFT CENTER LINE RIGHT

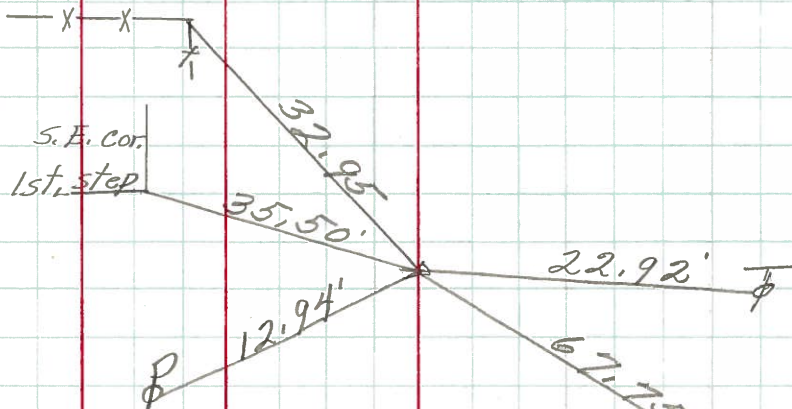
P.I. 147C
583+48.17
Iron Pin
5" down



P.I. 147B
574+59.36
1" pipe



P.I. 147A
569+50.76
R.R. spk.
2" down



All Plumbed

Top of 2nd Brick Surf Motel

PERSONNEL	TITLE	PERSONNEL	TITLE	COUNTY	DATE	WEATHER	TEMP.
Schneider		Potts		Ottawa	9-12-68	Fair	70°
Mosser				S. R. 163			
Borbour				SEC. Marblehead			
Redding							

DESCRIPTION Tie for Control Points JOB NO. _____

