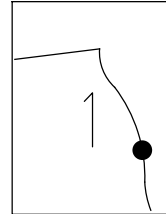


O.D.O.T. DISTRICT 2 SURVEY OFFICE (USE ONLY)

PERSONNEL _____ REFERENCE NO. 148 SHEET 51 OF 66
 NOTES CODER _____ DATE 9/4/12 ROUTE SR 163
 H.C. CODER _____ WEATHER CLOUDY COUNTY OTTAWA
 R.C. RHOADES _____ TEMP. 70° TOWNSHIP DANBURY
 SECTION 1-1
 DWG BY NIESE PID PVTRAIN

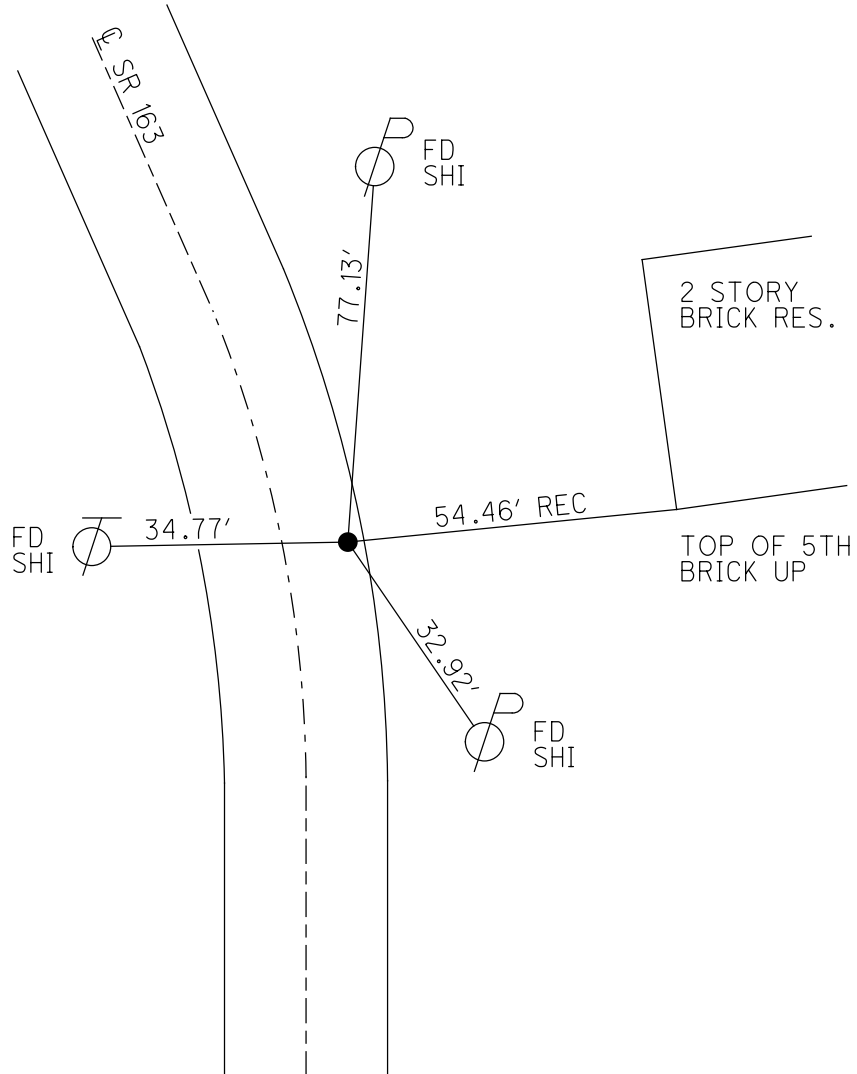
TYPE MONUMENT P.K./WASHER
 ON SURFACE - ~~BELOW~~ ON
 OFFSET C PAVEMENT 10.1' LT : ~~RT~~
1.3' TO LT EDGE PAVEMENT
 STATION: 2005+24

NOTE:
 THIS MAP IS FOR ODOT PURPOSES ONLY.
 TO INDEX REFERENCE TIES, AND DOES NOT
 REPRESENT TRUE LAND SUBDIVISION.



HORZ. DATUM: NAD83 (2011) GEOID: NAVD88 2018
 GRID: NORTHING: 680364.064 EASTING: 1909918.661

RECORD: P.I.
 $\Delta = 20^{\circ}46' \text{ RT}$
 STA 601+75.89
 SET P.K./WASHER
 6/10/96, MRC
 FD P.K./WASHER
 5/4/10, KPM
 9/4/12, SDC
 SET MAG/WASHER
 11/6/12, SDC
 FD MAG/WASHER
 11/8/12, SDC
 FD MAG/WASHER
 REF148
 6/11/21, TDN
 2/7/22, JFO

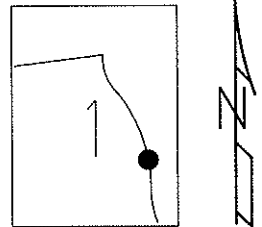


O.D.O.T. DISTRICT 2 SURVEY OFFICE (USE ONLY)

PERSONNEL	REFERENCE NO. <u>148</u>	SHEET <u>51</u> OF <u>63</u>
NOTES	DATE <u>9/4/12</u>	ROUTE <u>SR 163</u>
H.C. <u>CODER</u>	WEATHER <u>COUDY</u>	COUNTY <u>OTTAWA</u>
R.C. <u>RHOADES</u>	TEMP. <u>70°</u>	TOWNSHIP <u>DANBURY</u>
		SECTION <u>1-1</u>

TYPE MONUMENT P.K./WASHER
 ON SURFACE - ~~BELOW~~ ON
 LEFT - CL PAV'T - ~~RIGHT~~ 10.1'
1.3' TO LT EDGE PAVEMENT
 S.L.M. 2005+24

Grid: Northing: 680363.987 Easting: 1909918.621

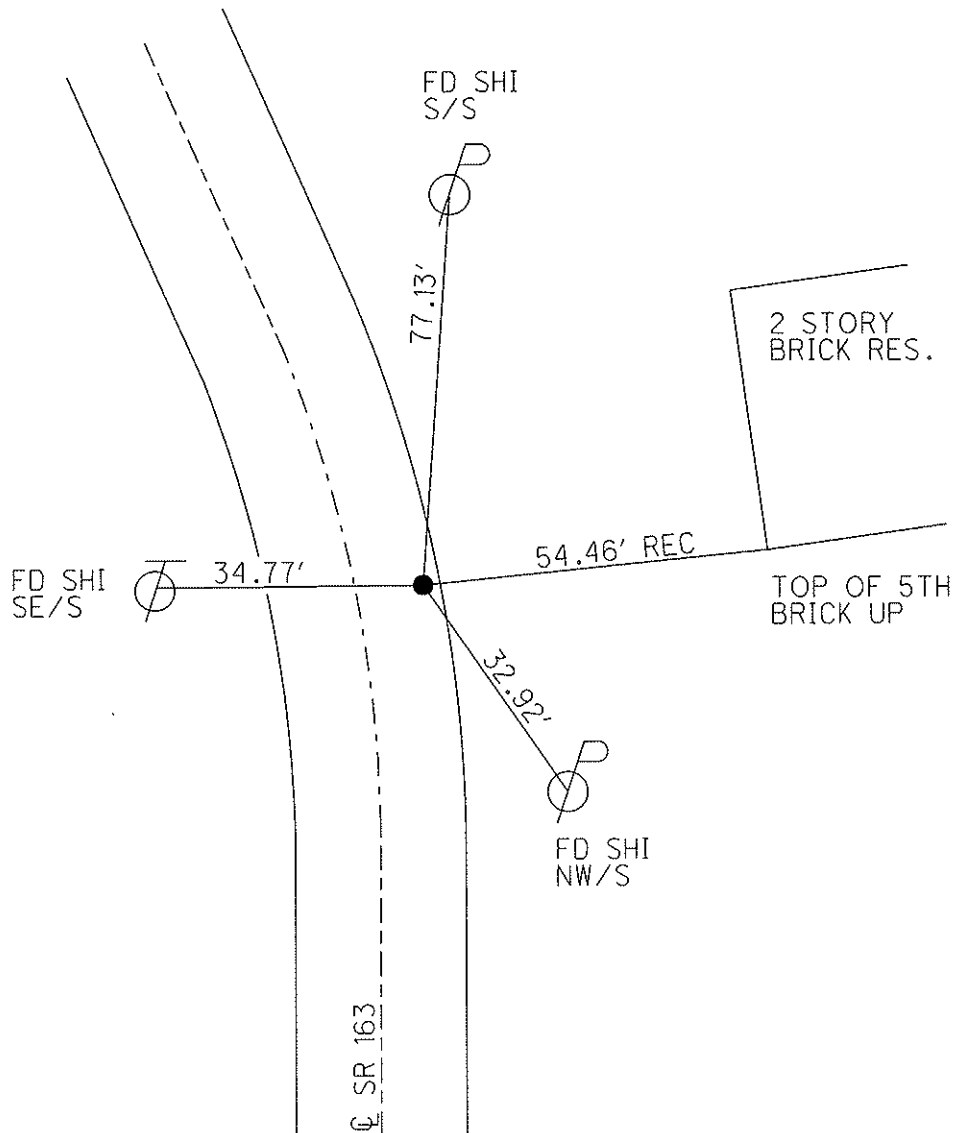


RECORD
 P.I. $\Delta = 20^\circ 46'$ RT.
 601+75.89

SET P.K./WASHER
 6/10/96, MRC
 FD P.K./WASHER
 GPS, SV144
 5/4/10, KPM

SET MAG/WASHER
 11/6/12, SDC

GPS, FINREF148
 11/8/12, SDC



O.D.O.T. DISTRICT 2 SURVEY OFFICE

PERSONNEL _____

REFERENCE NO. 148

SHEET 44 OF 52

NOTES CANTERBURY

H.C. LOEHRKE

R.C. ROUSOS

DATE 6-5-95

WEATHER FAIR

TEMP. +75° F

ROUTE S.R. 163

COUNTY OTTAWA

TOWNSHIP MARBLEHEAD

SECTION _____

T. _____ R. _____

TYPE MONUMENT BOAT SPIKE

ON SURFACE - BELOW 1 1/2" DEEP

LEFT- & PAV'T. - RIGHT 10.1' LT &

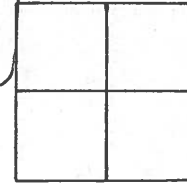
1.3' TO LT EDGE PAVEMENT

S.L.M. 2005 + 24

SET PK/WASHER

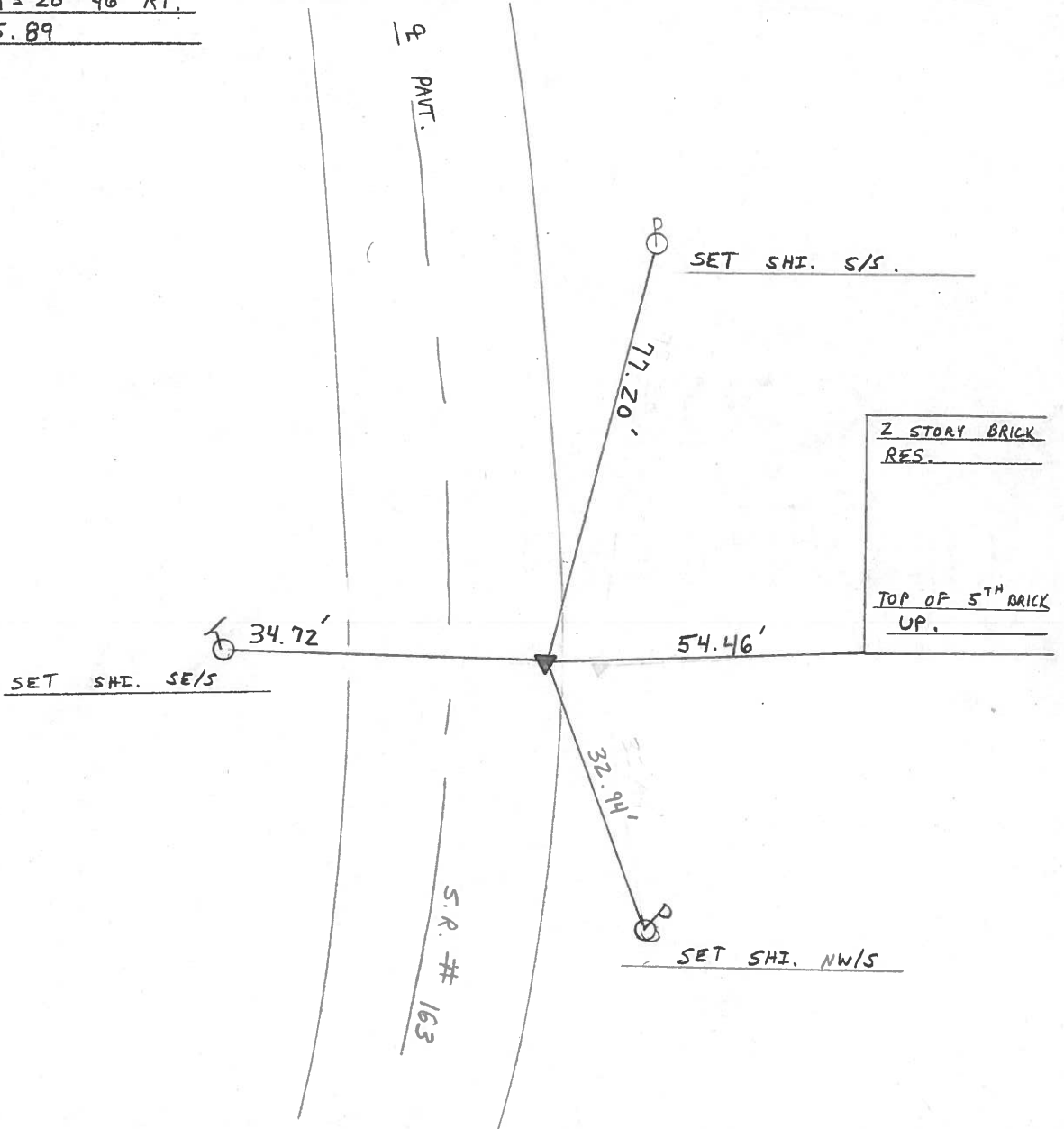
6/10/96

M.R.C.



RECORD: P.I. $\Delta = 20^\circ 46'$ RT.

STA = 601 + 75.89



County Ottawa S.R. # 163

Township Marblehead

Section _____

T N, R E

Personnel Cronin

Ripple

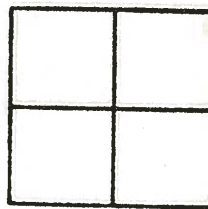
Geuman

Barbour

Date 12/14/83

Weather overcast

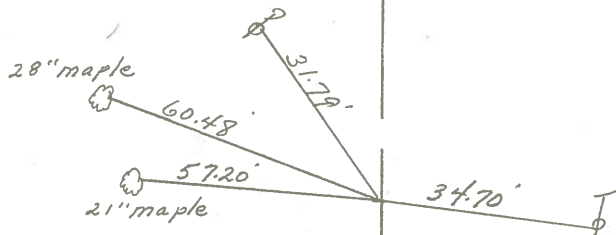
Temp. 40°



148



Plan
P.I. A = 20°46' Rt.
601 + 75.89
Fd. bolt spike, 1/2" below
surface 10' Lt. & Permit.



S.R. # 163

PERSONNEL TITLE PERSONNEL TITLE

COUNTY Ottawa DATE 6-14-71

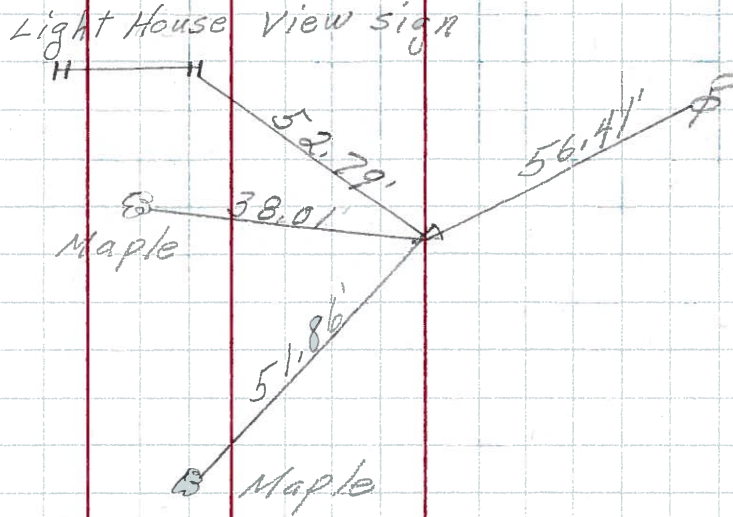
S. R. 163 WEATHER

SEC. 1 TEMP.

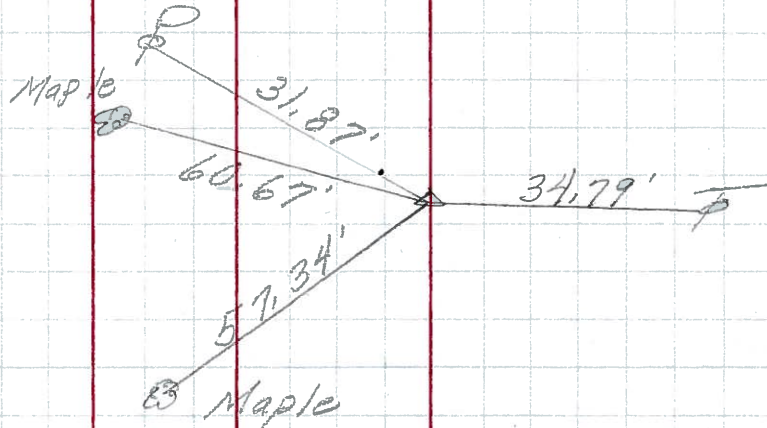
DESCRIPTION Marblehead JOB NO.

LEFT CENTER LINE RIGHT

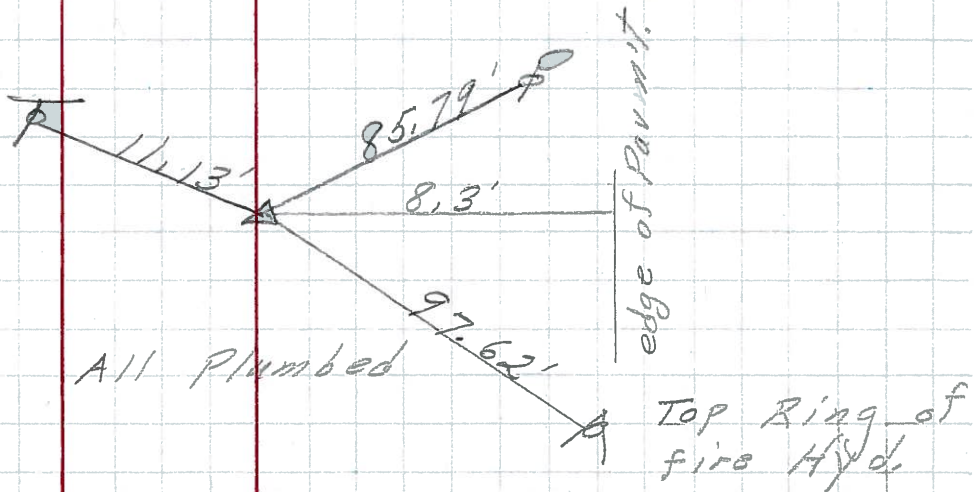
P.I. **148A**
604+ 95.56
P.K. Nail



P.I. **148**
601+ 75.89
Small Spk.



P.I. **147D**
587+ 72.19
Iron Pin
2" down



PERSONNEL	TITLE	PERSONNEL	TITLE	COUNTY	DATE	S. R.	WEATHER	TEMP.	JOB NO.
Schneider		Potts		Ottawa	9-12-68	163	Fair	70°	
Mosser									
Barbour									
Redding									
DESCRIPTION				Tie for Control Points					

