

O.D.O.T. DISTRICT 2 SURVEY OFFICE (USE ONLY)

PERSONNEL

REFERENCE NO. 148 B

SHEET 53 OF 66

NOTES CODER _____ DATE 9/16/12
 H.C. CODER _____ WEATHER FAIR
 R.C. RHOADES _____ TEMP. 75°

ROUTE SR 163
 COUNTY OTTAWA
 TOWNSHIP DANBURY
 SECTION 1-1

DWG BY NIESE PID PVTRAIN

TYPE MONUMENT P.K./WASHER

ON SURFACE - ~~BELOW~~ ON

OFFSET \varnothing PAVEMENT 7.8' LT : ~~RT~~

3.7' TO LT EDGE PAVEMENT

STATION: 2012+94

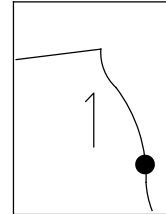
HORIZ.DATUM: NAD83 (2011)

GEOID: NAVD88 2018

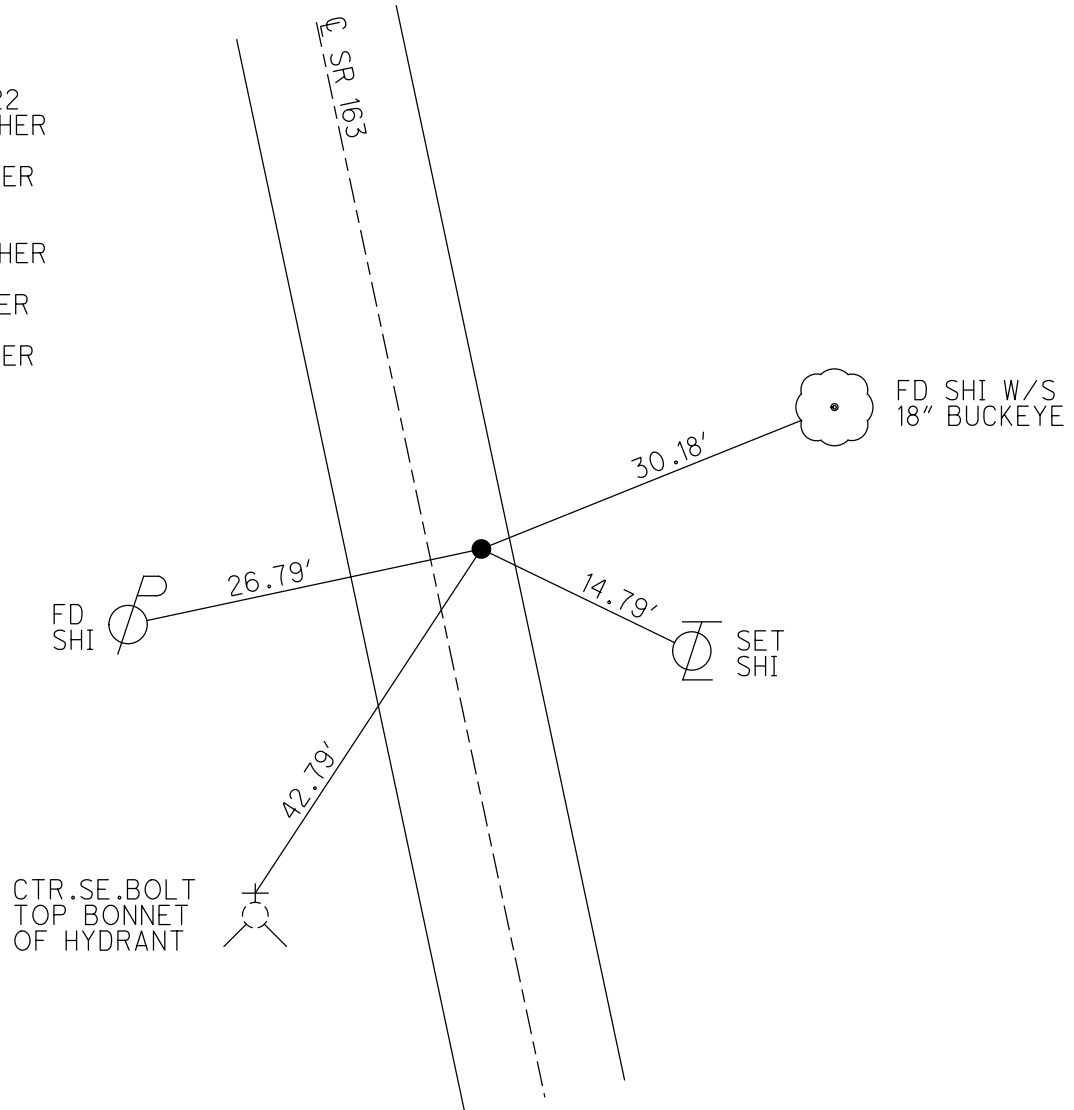
GRID: NORTHING: 679606.811

EASTING: 1910005.473

NOTE:
 THIS MAP IS FOR ODOT PURPOSES ONLY
 TO INDEX REFERENCE TIES, AND DOES NOT
 REPRESENT TRUE LAND SUBDIVISION.



RECORD: P.I.
 $\Delta = 21^\circ 46'$ RT
 STA 609+38.22
 SET MAG/WASHER
 6/10/96, MRC
 FD P.K./WASHER
 5/4/10, KPM
 9/16/12, SDC
 SET MAG/WASHER
 11/6/12, SDC
 FD MAG/WASHER
 11/8/12, SDC
 FD P.K./WASHER
 REFB148
 6/11/21, TDN
 2/7/22, JFO

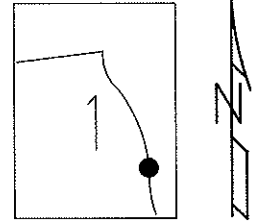


O.D.O.T. DISTRICT 2 SURVEY OFFICE (USE ONLY)

PERSONNEL	REFERENCE NO. <u>148 B</u>	SHEET <u>53</u> OF <u>63</u>
NOTES <u>CODER</u>	DATE <u>9/16/12</u>	ROUTE <u>SR 163</u>
H.C. <u>CODER</u>	WEATHER <u>FAIR</u>	COUNTY <u>OTTAWA</u>
R.C. <u>RHOADES</u>	TEMP. <u>75°</u>	TOWNSHIP <u>DANBURY</u>
		SECTION <u>1-1</u>

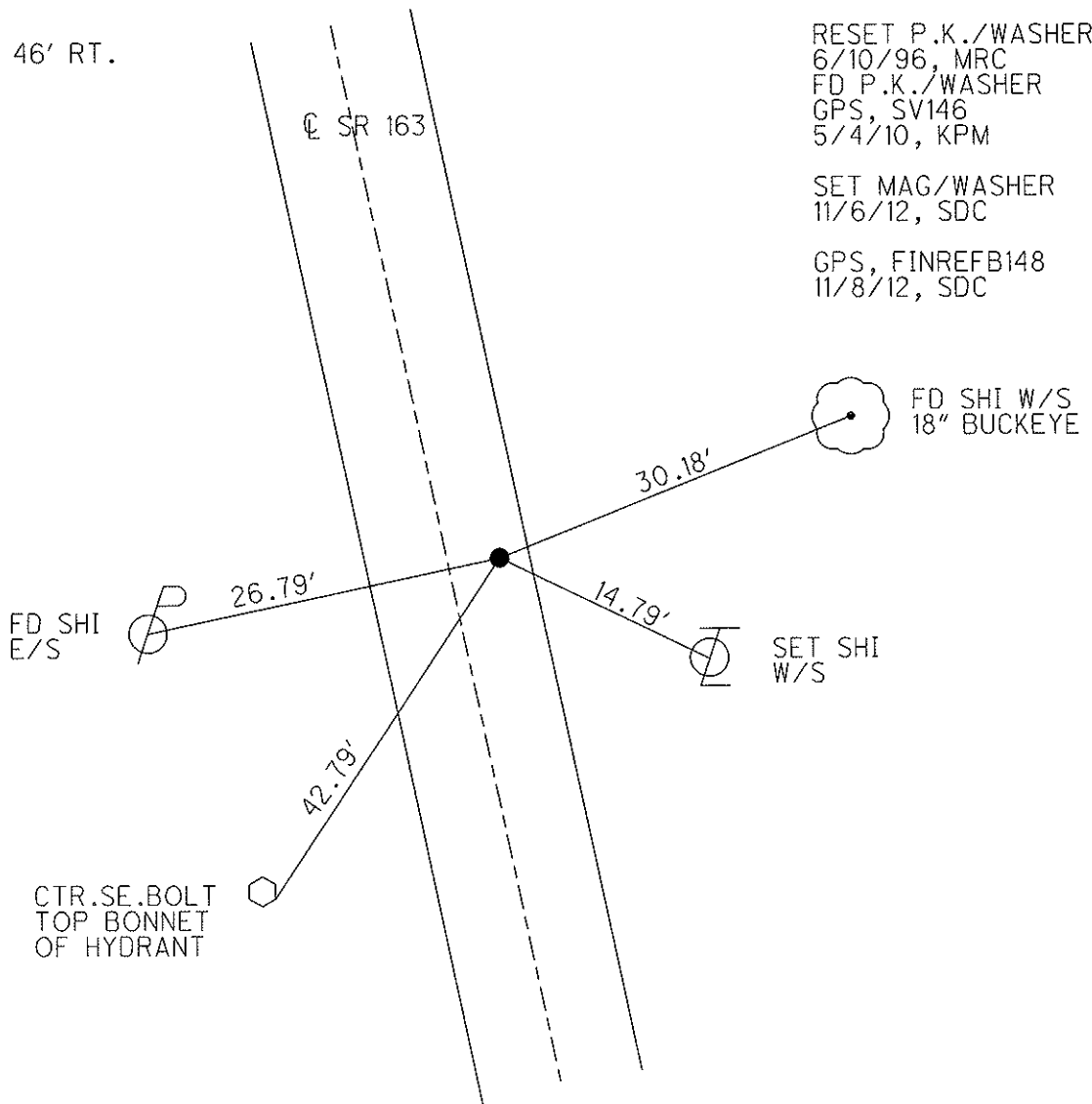
TYPE MONUMENT P.K./WASHER
 ON SURFACE - ~~BELOW~~ ON
 LEFT - ☉ PAV'T - ~~RIGHT~~ 7.8'
3.7' TO LT EDGE PAVEMENT
 S.L.M. 2012+94

Grid: Northing: 679606.745 Easting: 1910005.393



RECORD
 P.I. Δ = 21° 46' RT.
 609+38.22

RESET P.K./WASHER
 6/10/96, MRC
 FD P.K./WASHER
 GPS, SV146
 5/4/10, KPM
 SET MAG/WASHER
 11/6/12, SDC
 GPS, FINREFB148
 11/8/12, SDC



O.D.O.T. DISTRICT 2 SURVEY OFFICE

PERSONNEL _____

REFERENCE NO. 148 B

SHEET 46 OF 52

NOTES CANTERBURY

H.C. LOEHRKE

R.C. Rousos

DATE 6-5-95

WEATHER FAIR

TEMP. +75 °F

ROUTE S.R. 163

COUNTY OTTAWA

TOWNSHIP MARBLEHEAD

SECTION _____

T. _____ R. _____

TYPE MONUMENT PK NAIL / WASHER

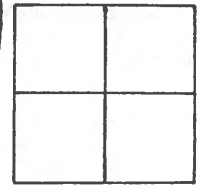
ON SURFACE - BELOW YES

LEFT-~~☉~~ PAV'T. - RIGHT 7.8 LT ☉

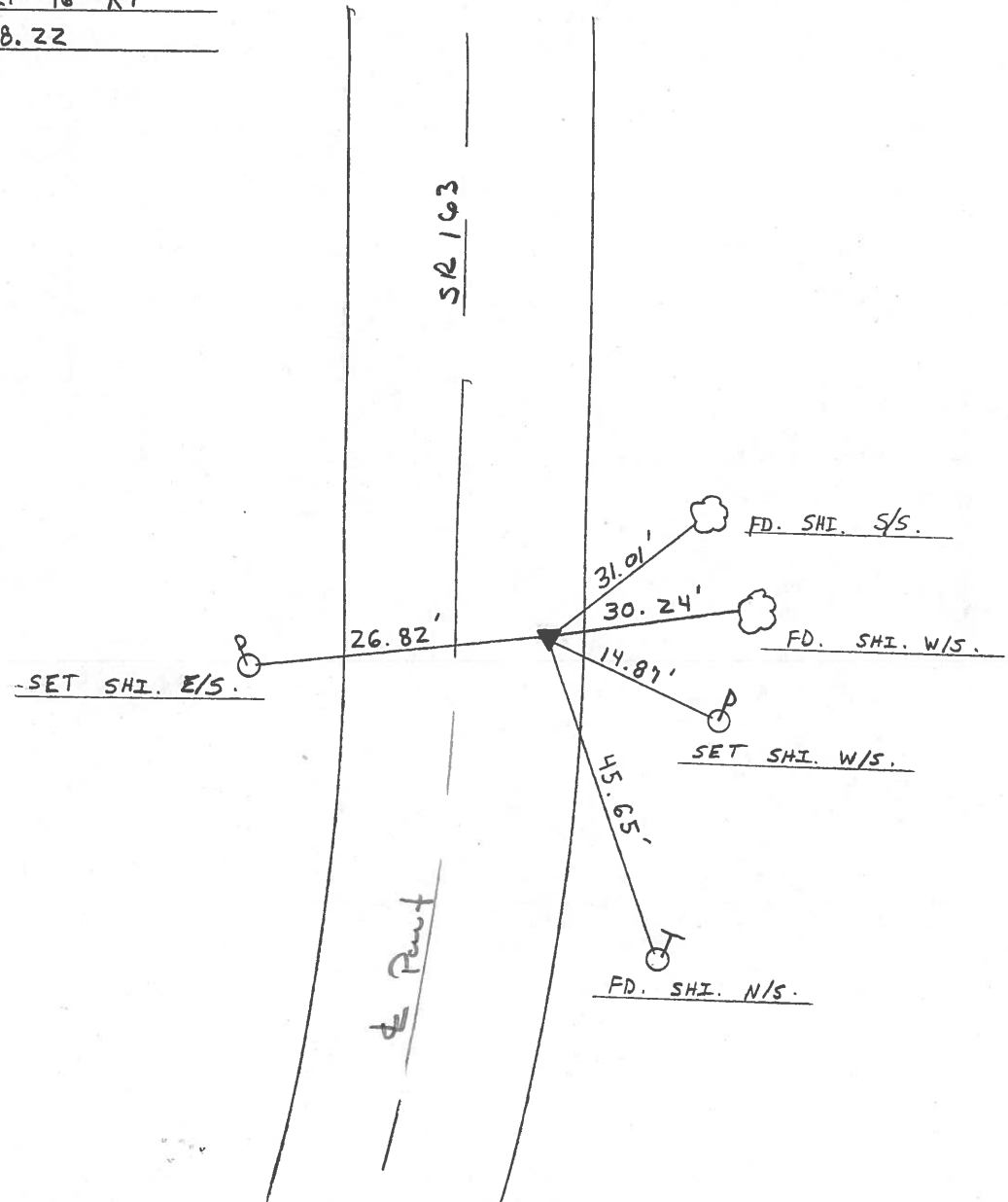
3.7' TO LT EDGE PAVEMENT

S.L.M. 2012 + 94

SET PK/WASHER
 6/10/96
 M.R.C.



RECORD: $\Delta = 21^\circ 46' RT$
 STA 609 + 38.22



County Ottawa S.R. #163

Date 12/14/83

Township Marblehead

Weather overcast

Section —

Temp. 41°

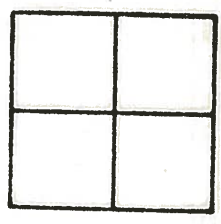
T N, R E

Personnel Cronin

Ripple

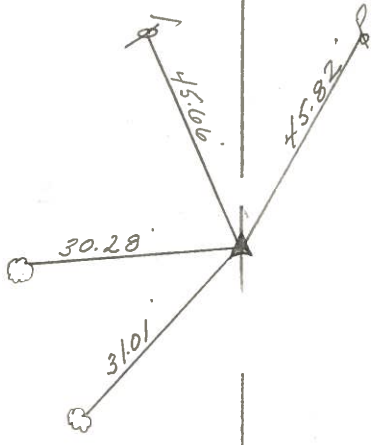
Geyman

Barbour



148 B

Plan
P.I. Δ=21°46' Rt.
609 + 38.22
Set P.K. & washer atop
P.K. 7 Lt. & Point.



Q S.R. #163

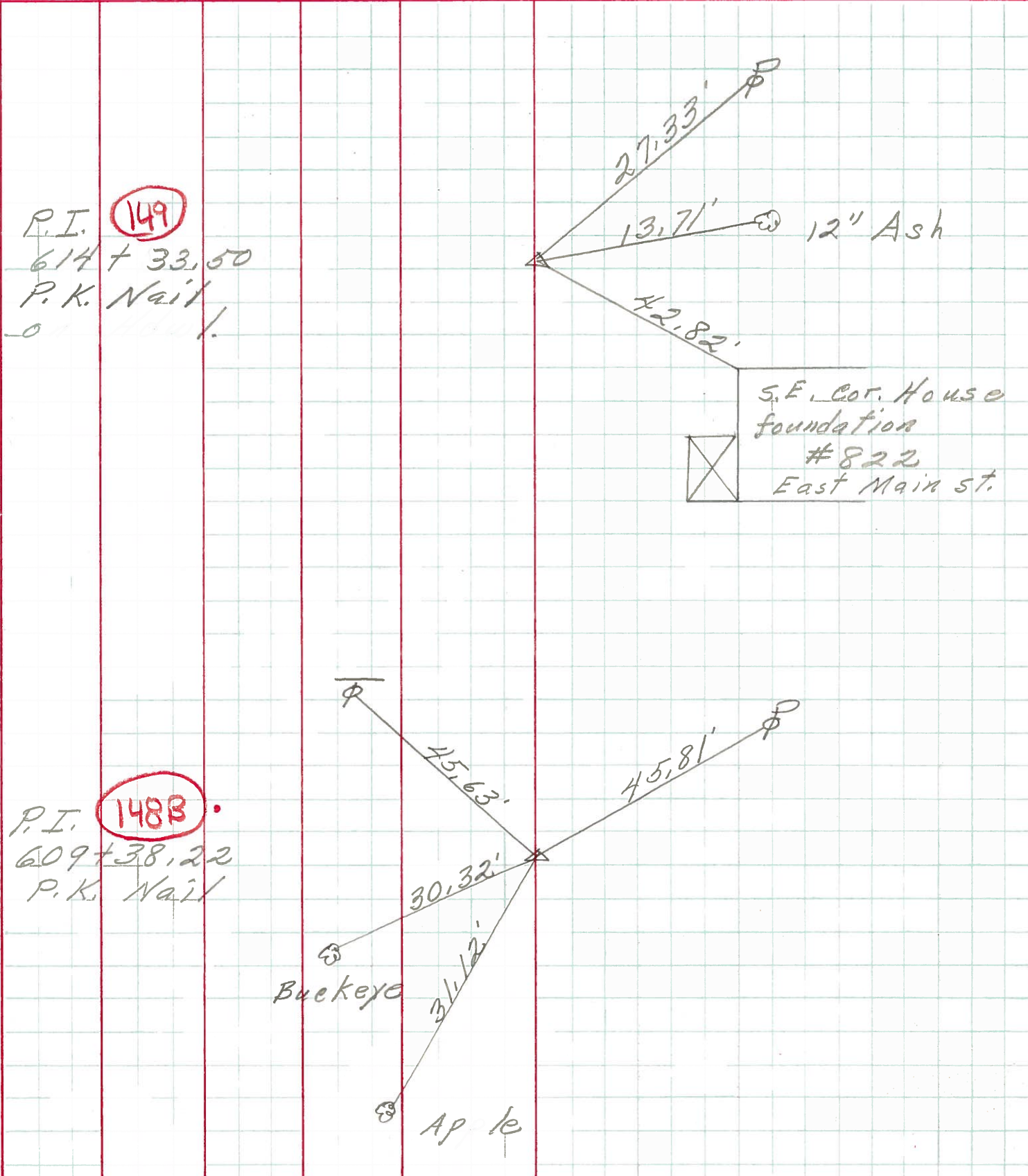
PERSONNEL TITLE PERSONNEL TITLE

COUNTY Ottawa DATE 6-15-71

S. R. 163 WEATHER

SEC. 1 TEMP.

DESCRIPTION Marble head LEFT CENTER LINE RIGHT JOB NO.



P.I. **149**
 614 + 33.50
 P.K. Nail
 0

P.I. **148B**
 609 + 38.22
 P.K. Nail

S.E. Cor. House
 foundation
 #822
 East Main St.

Buckeye

Apple

PERSONNEL TITLE PERSONNEL TITLE COUNTY Ottawa DATE 9-13-68
Schnaider _____
Barbour _____ S. R. 163 WEATHER Fair
Redding _____
Potts J _____ SEC. _____ TEMP. 60°

DESCRIPTION Ties for Control Points JOB NO. _____

	LEFT	CENTER LINE	RIGHT
P. I. 623+8906 R. R. spk. 2" down Marblehead Corp. Conc. drive 6407	(150)	18" Hackberry 34.60 21.90 77.03	39.22 A Face of Fire Hyd.
P. I. 620+51.13 P. K. Nail on surface 6406	(149A)	18.80 66.20 24" Twin Ash	34.15 12" Ash
P. I. P. K. Nail on Hdwl. 6405	(149)	27.33 13.71 12.84	S.E. Cor. to House # 822 East Main Str.
P. I. 608+ P. K. Nail on top 6404	(148B)	10" Buckeye 11" Apple Light House View sign 44.62 30.41 31.12	45.91
P. I. 609+95.56 P. K. Nail on Top 6403	(148A)	2-28" Cotton wood 51.86 38.46	56.41