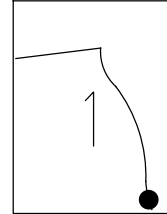


O.D.O.T. DISTRICT 2 SURVEY OFFICE (USE ONLY)

PERSONNEL	REFERENCE NO. <u>149 A</u>	SHEET <u>55</u> OF <u>66</u>
NOTES <u>RHOADES</u>	DATE <u>9/6/12</u>	ROUTE <u>SR 163</u>
H.C. <u>CODER</u>	WEATHER <u>FAIR</u>	COUNTY <u>OTTAWA</u>
R.C. <u>RHOADES</u>	TEMP. <u>75°</u>	TOWNSHIP <u>DANBURY</u>
		SECTION <u>1-1</u>
DWG BY <u>NIESE</u>	PID <u>PVTRAIN</u>	

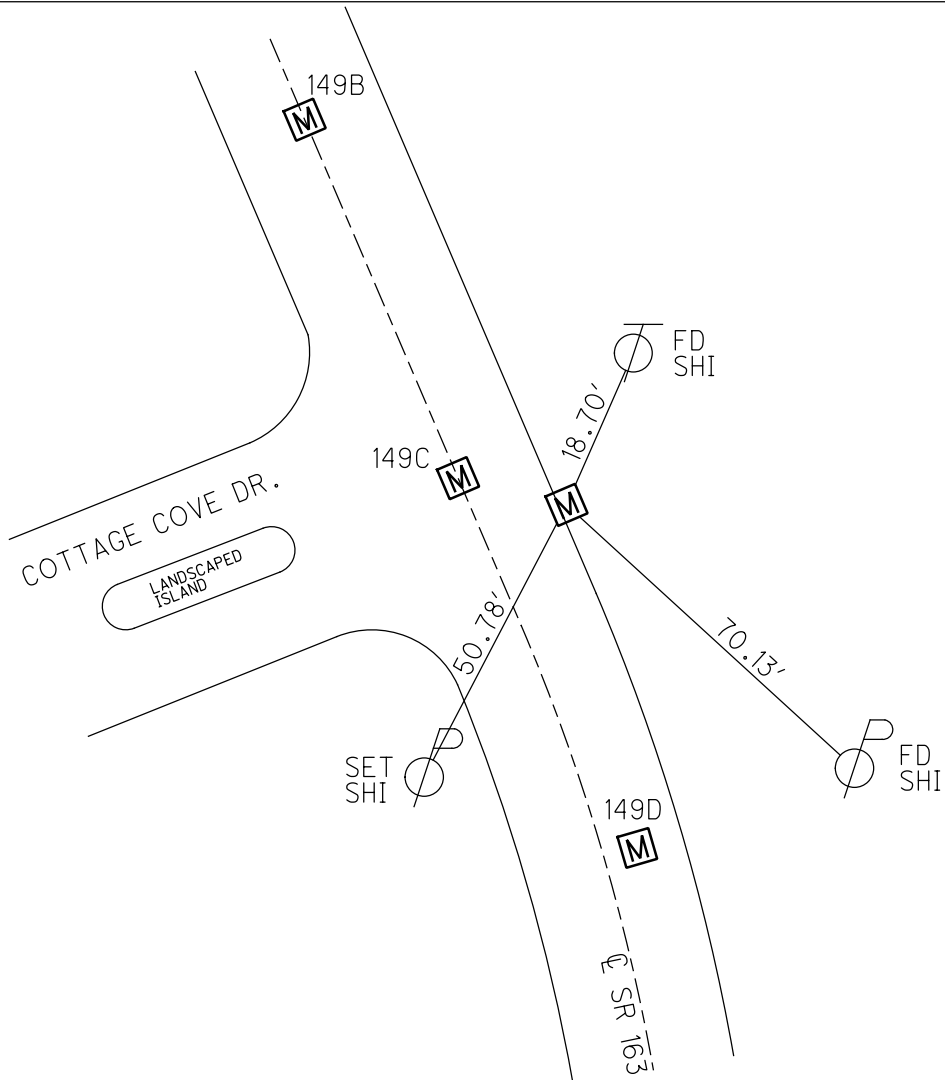
TYPE MONUMENT P.K./WASHER
 ON SURFACE - ~~BELOW~~ ON
 OFFSET Q PAVEMENT 11.5' LT : ~~RT~~
0.6' LT OF LT EDGE PAVEMENT
 STATION: 2024+18

NOTE:
 THIS MAP IS FOR ODOT PURPOSES ONLY
 TO INDEX REFERENCE TIES, AND DOES NOT
 REPRESENT TRUE LAND SUBDIVISION.



HORIZ.DATUM: NAD83 (2011) GEOID: NAVD88 2018
 GRID: NORTHING: 678543.866 EASTING: 1910194.248

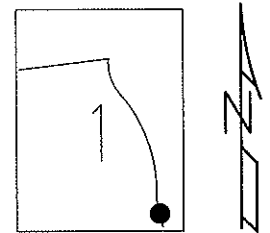
RECORD: P.I.
 $\Delta = 18^{\circ}30' RT$
 STA 620+61.12
 SET P.K./WASHER
 6/10/96, MRC
 FD P.K./WASHER
 5/4/10, KPM
 9/6/12, SDC
 SET MAG/WASHER
 11/6/12, SDC
 FD MAG/WASHER
 11/8/12, SDC
 FD MONBOX
 W/ 1" IPIN
 REFA149
 6/14/21, TDN
 2/7/22, JFO



O.D.O.T. DISTRICT 2 SURVEY OFFICE (USE ONLY)

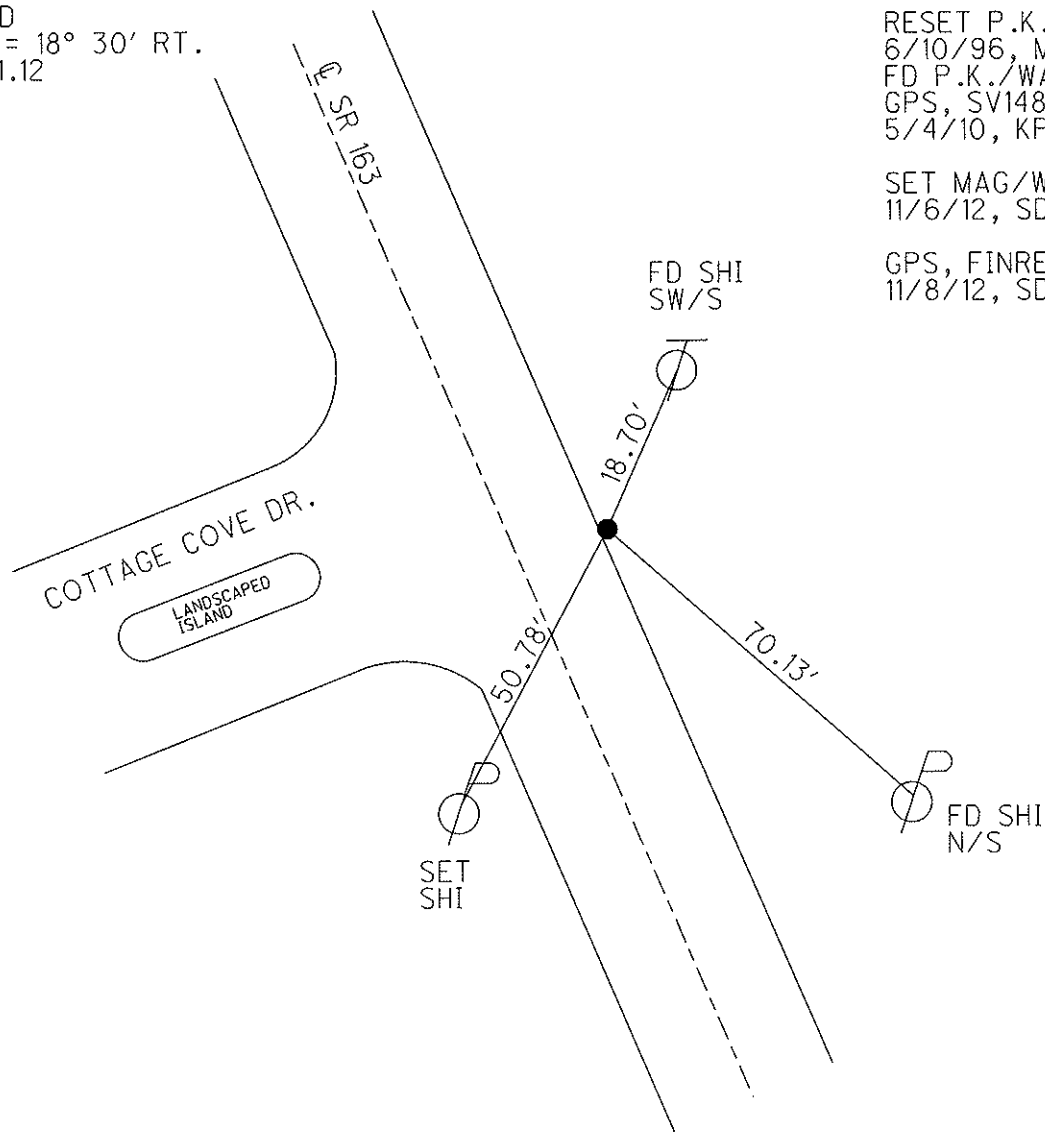
PERSONNEL _____ REFERENCE NO. 149 A SHEET 55 OF 63
 NOTES RHOADES DATE 9/6/12 ROUTE SR 163
 H.C. CODER WEATHER FAIR COUNTY OTTAWA
 R.C. RHOADES TEMP. 75° TOWNSHIP DANBURY
 _____ SECTION 1-1

TYPE MONUMENT P.K./WASHER
 ON SURFACE - ~~BELOW~~ ON _____
 LEFT - Q PAV'T - ~~RIGHT~~ 11.5'
0.6' LT TO LT EDGE PAVEMENT
 S.L.M. 2024+18
 Grid: Northing: 678543.804 Easting: 1910194.267



RECORD
 P.I. Δ = 18° 30' RT.
 620+61.12

RESET P.K./WASHER
 6/10/96, MRC
 FD P.K./WASHER
 GPS, SV148
 5/4/10, KPM
 SET MAG/WASHER
 11/6/12, SDC
 GPS, FINREFA149
 11/8/12, SDC



O.D.O.T. DISTRICT 2 SURVEY OFFICE

PERSONNEL _____

REFERENCE NO. 149 A

SHEET 48 OF 52

NOTES CANTERBURY

H.C. LOEHRKE

R.C. ROUSOS

DATE 6-5-95

WEATHER FAIR

TEMP. + 75° F

ROUTE S.R. #163

COUNTY OTTAWA

TOWNSHIP MARBLEHEAD

SECTION _____

T _____ R _____

TYPE MONUMENT PK NAIL / WASHER

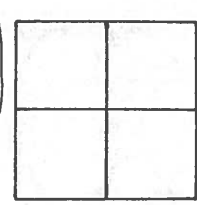
ON SURFACE - BELOW YES

LEFT-☉ PAVT. - RIGHT 11.5' LT ☉

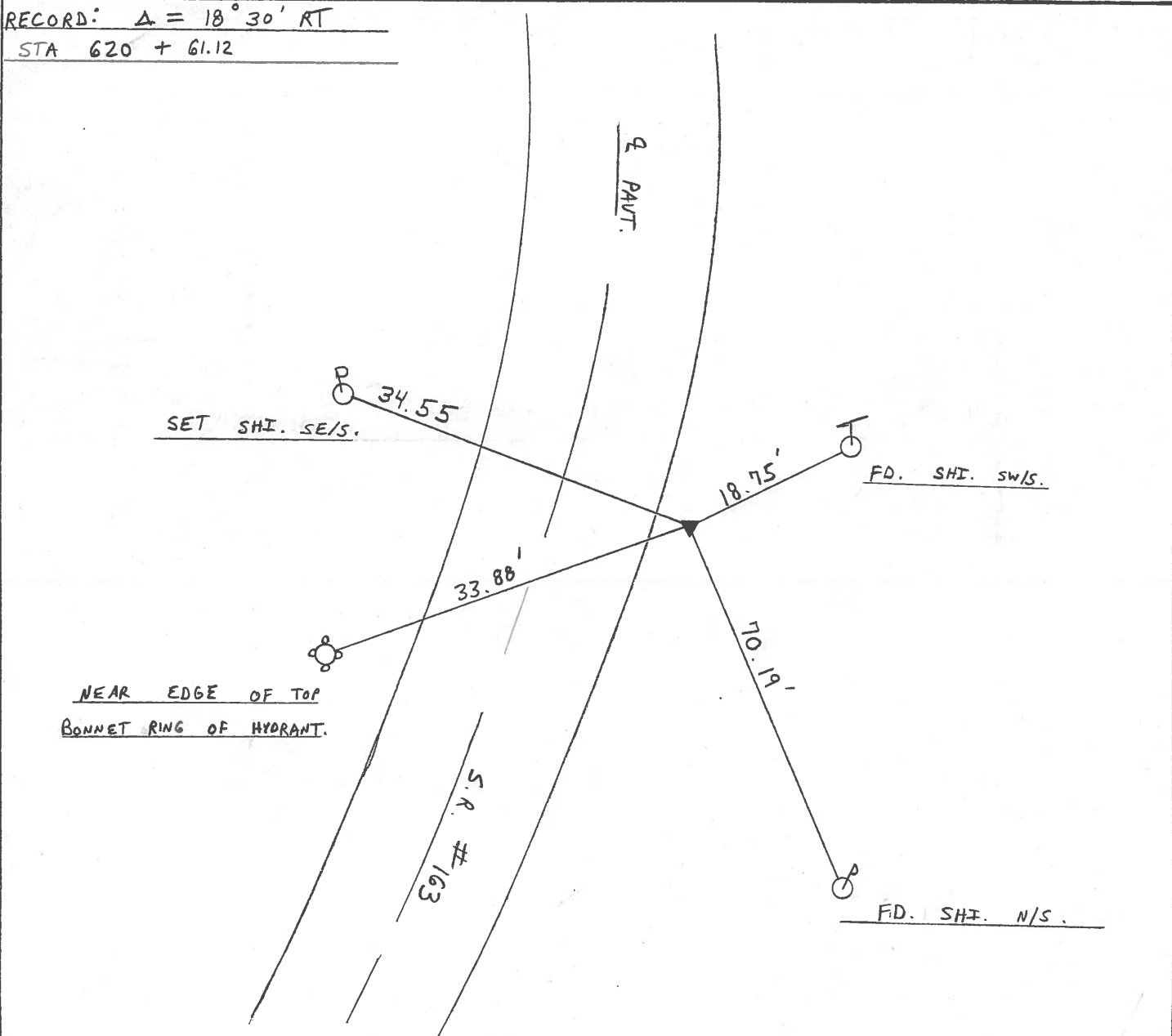
.6 LT TO ^{OF} LT EDGE PAVEMENT

S.L.M. 2024 + 18

SET PK/WASHER
6/10/96
M.R.C.



RECORD: Δ = 18° 30' RT
STA 620 + 61.12



County Ottawa S.R. #163

Township Marblehead

Section _____

T N, R E

Personnel Cronin

Ripple

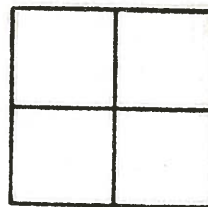
Geyman

Barbour

Date 12/14/83

Weather overcast

Temp. 41°



149A

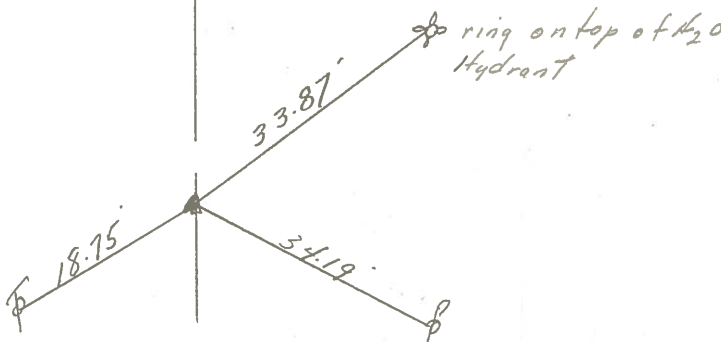


Plan
P.I. $\Delta = 18^{\circ}30'$ Rt.

620 + 61.12

set P.K. & washer at top

P.K. - 11.5' Lt & Paint.



S.R. #163

PERSONNEL TITLE PERSONNEL TITLE

COUNTY Ottawa DATE 6-15-71

S. R. 163 WEATHER

SEC. 1 TEMP.

DESCRIPTION Marblehead LEFT CENTER LINE RIGHT JOB NO.

Ohio State Roadside Park

P.I. 150
623+84.06
R. R. Spt.
2" down
End of S.R. #163

18" Hackberry
24.60'
21.86'
72.03'

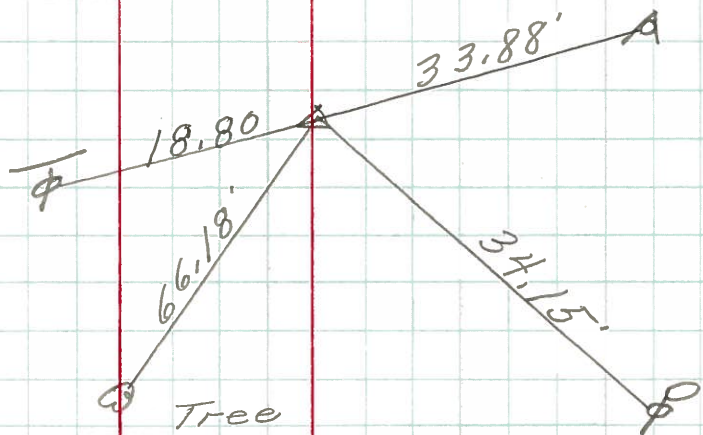
Concr. drive

Marblehead Corp.

39.22'

S.R. #163

P.I. 149A
620+51.12
P.K. Nail



Ring on top of fire Hyd.

Tree

PERSONNEL	TITLE	PERSONNEL	TITLE	COUNTY	DATE
<u>Schneider</u>				<u>Ottawa</u>	<u>9-13-68</u>
<u>Barbour</u>				S. R.	WEATHER
<u>Redding</u>				<u>163</u>	<u>Fair</u>
<u>Potts J</u>				SEC.	TEMP.
					<u>60°</u>

DESCRIPTION Ties for Control Points JOB NO. _____

LEFT	CENTER LINE	RIGHT
P. I. 623+89.06 R. R. spk. 2' down Marblehead Corp. Conc. drive 6407		
P. I. 620+51.12 P. K. Nail on surface 6406		A Face of Fire Hyd.
P. I. P. K. Nail on Hdwl. 6405		S.E. Cor. to House # 822 East Main St.
P. I. 608+ P. K. Nail on top 6404		Light House View sign
P. I. 604+ 95.56 P. K. Nail on Top 6403		