

O.D.O.T. DISTRICT 2 SURVEY OFFICE (USE ONLY)

PERSONNEL _____ REFERENCE NO. 150 SHEET 59 OF 66
 NOTES RHOADES DATE 9/6/12 ROUTE SR 163
 H.C. CODER WEATHER FAIR COUNTY OTTAWA
 R.C. RHOADES TEMP. 75° TOWNSHIP DANBURY
 SECTION 1-1

DWG BY NIESE PID PVTRAIN

TYPE MONUMENT P.K./WASHER

ON SURFACE - ~~BELOW~~ ON

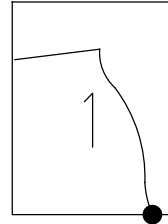
OFFSET ☉ PAVEMENT 4.0' LT : ~~RT~~
6.6' TO LT EDGE PAVEMENT

STATION: 2027+42

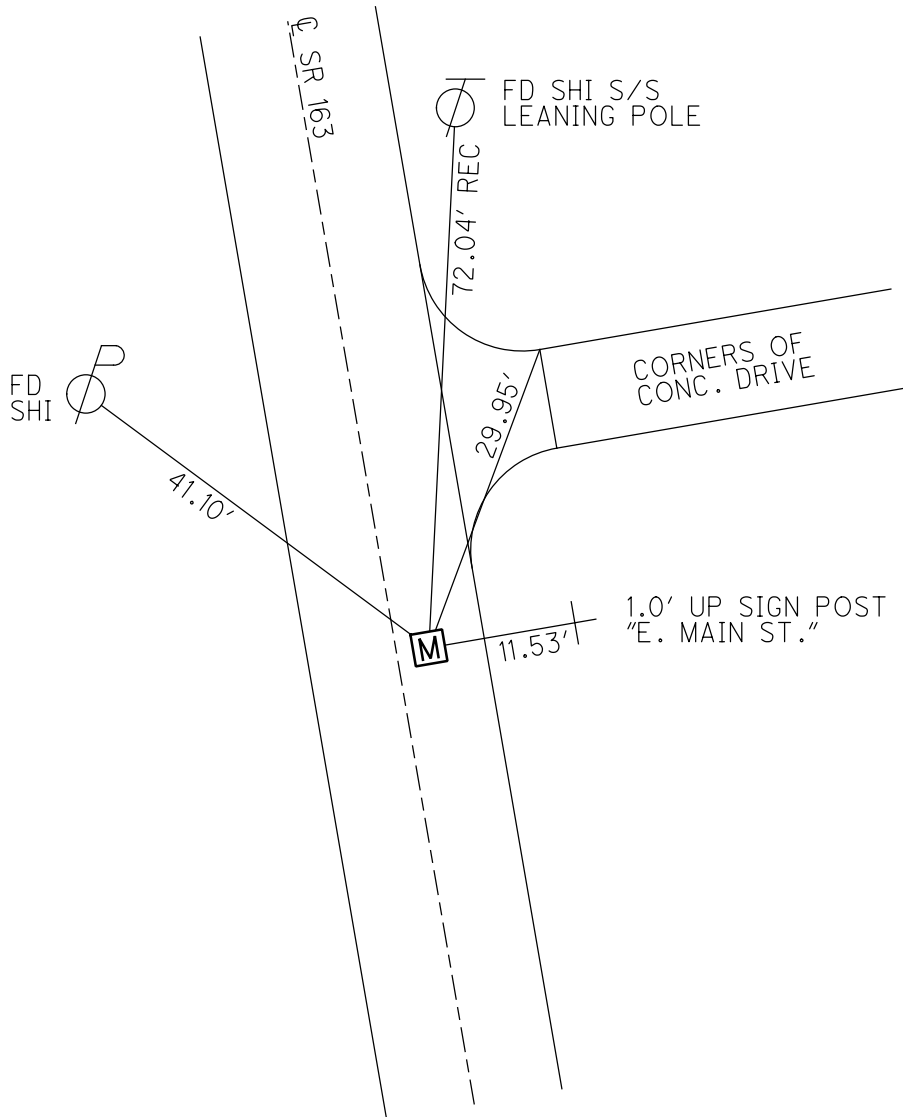
HORZ.DATUM: NAD83 (2011) GEOID: NAVD88 2018

GRID: NORTHING: 678220.473 EASTING: 1910235.628

NOTE:
THIS MAP IS FOR ODOT PURPOSES ONLY
TO INDEX REFERENCE TIES, AND DOES NOT
REPRESENT TRUE LAND SUBDIVISION.



RECORD: P.I.
 $\Delta = 03^{\circ}35'$ RT
 STA 623+84.06
 STA 2023+71.58
 SET P.K./WASHER
 6/10/96, MRC
 FD P.K./WASHER
 5/4/10, KPM
 9/6/12, SDC
 SET MAG/WASHER
 11/8/12, SDC
 FD MONBOX
 W/ 1" IPIN
 REF150
 6/14/21, TDN
 2/7/22, JFO



O.D.O.T. DISTRICT 2 SURVEY OFFICE (USE ONLY)

PERSONNEL _____

REFERENCE NO. 150

SHEET 56 OF 63

NOTES RHOADES

DATE 9/6/12

ROUTE SR 163

H.C. CODER

WEATHER FAIR

COUNTY OTTAWA

R.C. RHOADES

TEMP. 75°

TOWNSHIP DANBURY

SECTION 1-1

TYPE MONUMENT P.K./WASHER

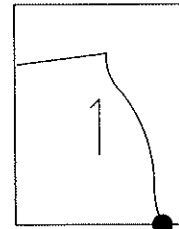
ON SURFACE - ~~BELOW~~ ON

LEFT - CL PAV'T - ~~RIGHT~~ 4'

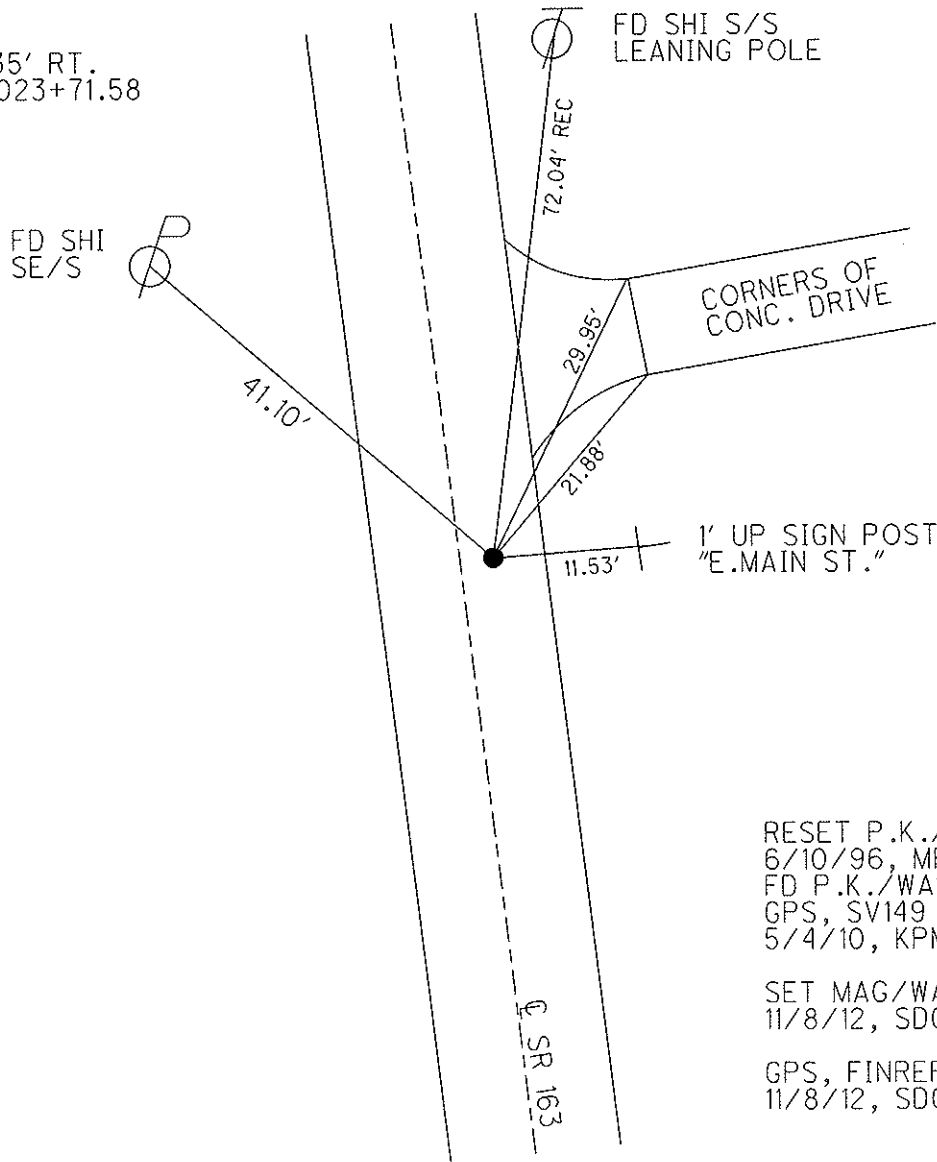
6.6' TO LT EDGE PAVEMENT

S.L.M. 2027+42

Grid: Northing: 678221.292 Easting: 1910235.477



RECORD
P.I. $\Delta = 03^\circ 35'$ RT.
623+84.06, 2023+71.58



RESET P.K./WASHER
6/10/96, MRC
FD P.K./WASHER
GPS, SV149
5/4/10, KPM

SET MAG/WASHER
11/8/12, SDC

GPS, FINREF149
11/8/12, SDC

O.D.O.T. DISTRICT 2 SURVEY OFFICE

PERSONNEL _____

REFERENCE NO. 150

SHEET 49 OF 52

NOTES CANTERBURY

H.C. LOEHRKE

R.C. ROUSOS

DATE 6-5-95

WEATHER FAIR

TEMP. +75°F

ROUTE S.R. #163

COUNTY OTTAWA

TOWNSHIP MARBLEHEAD

SECTION _____

T _____ R _____

TYPE MONUMENT PK NAIL / WASHER

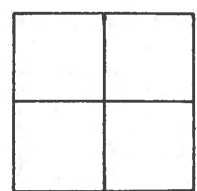
ON SURFACE - BELOW YES

LEFT - ☉ PAV'T. - RIGHT 4' LT ☉

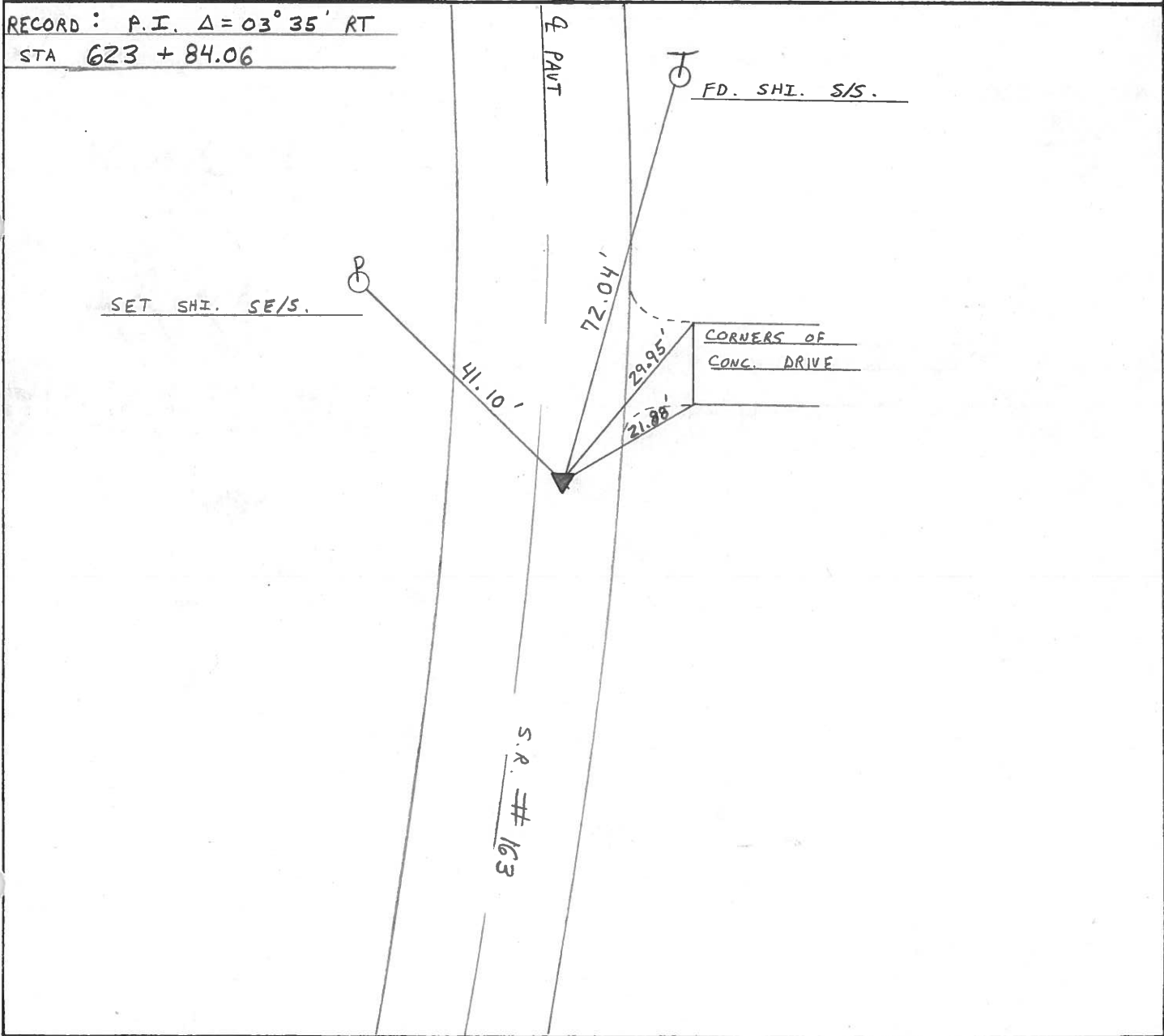
6.6' TO LT EDGE PAVEMENT

S.L.M. 2027 + 42

SET PK/WASHER
6/10/96
M.R.C.



RECORD: P.I. $\Delta = 03^{\circ} 35'$ RT
STA 623 + 84.06



County Ottawa S.R. #163

Township Marblehead-Danbury

Section

T N, R E

Personnel Crozin

Ripple

Geuman

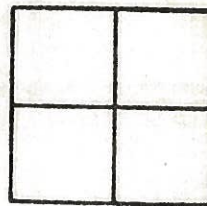
Barbour

#150

Date 12/14/83

Weather overcast

Temp. 41°



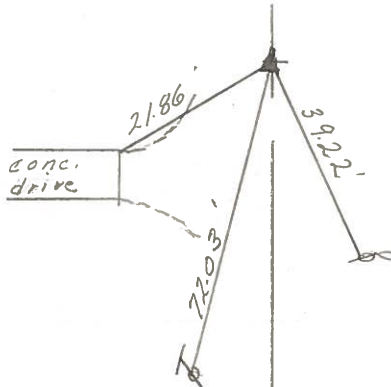
Plan
P.I. Δ = 03°35' Rt.

623 + 84.06

Set P.K. & washer atop

R.R. spike 4' Lt. & Permit

Marblehead-Corp. Line



S.R. #163

PERSONNEL TITLE PERSONNEL TITLE

COUNTY Ottawa DATE 6-15-71

S. R. 163 WEATHER

SEC. 1 TEMP.

DESCRIPTION Marblehead JOB NO.

LEFT CENTER LINE RIGHT

Ohio State Roadside Park

P.I. 150
623 + 84.06
R.R. Spk.
2" down
End of S.R. #163

18" Hackberry
24.60'

Concr. drive

Marblehead Corp.

21.86'

72.03'

39.22'

Co. Rd. #135

S.R. #163

P.I. 149A
620 + 51.12
P.K. Nail

18.80'

66.18'

33.88'

34.15'

Ring on top of fire Hyd.

Tree

PERSONNEL	TITLE	PERSONNEL	TITLE	COUNTY	DATE
<u>Schneider</u>				<u>Ottawa</u>	<u>9-13-68</u>
<u>Barbour</u>				S. R.	WEATHER
<u>Redding</u>				<u>163</u>	<u>Fair</u>
<u>Potts J</u>				SEC.	TEMP.
					<u>60°</u>

DESCRIPTION Ties for Control Points JOB NO. _____

