

O.D.O.T. DISTRICT 2 SURVEY OFFICE (USE ONLY)

PERSONNEL	REFERENCE NO. <u>154 B</u>	SHEET <u>66</u> OF <u>66</u>
NOTES <u>RHOADES</u>	DATE <u>9/5/12</u>	ROUTE <u>SR 163</u>
H.C. <u>CODER</u>	WEATHER <u>FAIR</u>	COUNTY <u>OTTAWA</u>
R.C. <u>RHOADES</u>	TEMP. <u>75°</u>	TOWNSHIP <u>DANBURY</u>
		SECTION <u>1-6</u>

DWG BY NIESE PID PVTRAIN

TYPE MONUMENT P.K./WASHER

ON SURFACE - ~~BELOW~~ ON

OFFSET \odot PAVEMENT _____ LT : RT

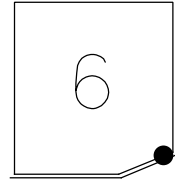
1.6' TO LT EDGE PAVEMENT

STATION: 2089+41.35

HORZ.DATUM: NAD83 (2011) GEOID: NAVD88 2018

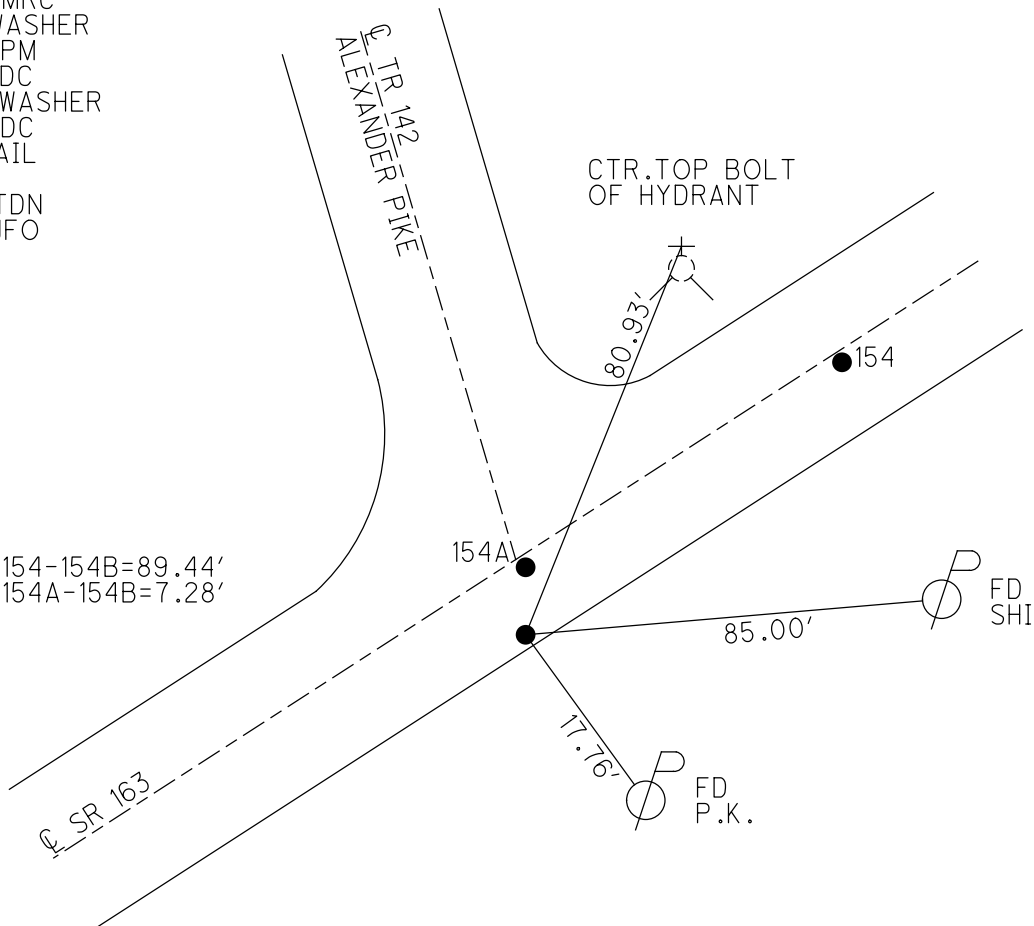
GRID: NORTHING: 673992.516 EASTING: 1906432.473

NOTE:
THIS MAP IS FOR ODOT PURPOSES ONLY.
TO INDEX REFERENCE TIES, AND DOES NOT
REPRESENT TRUE LAND SUBDIVISION.



RECORD:
SET P.K./WASHER
6/10/96, MRC
FD P.K./WASHER
5/4/10, KPM
9/5/12, SDC
SET MAG/WASHER
11/8/12, SDC
FD MAG NAIL
REFB154
6/14/21, TDN
2/7/22, JFO

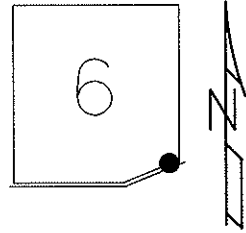
DIST. 154-154B=89.44'
DIST. 154A-154B=7.28'



O.D.O.T. DISTRICT 2 SURVEY OFFICE (USE ONLY)

PERSONNEL	REFERENCE NO. <u>154 B</u>	SHEET <u>63</u> OF <u>63</u>
NOTES <u>RHOADES</u>	DATE <u>9/5/12</u>	ROUTE <u>SR 163</u>
H.C. <u>CODER</u>	WEATHER <u>FAIR</u>	COUNTY <u>OTTAWA</u>
R.C. <u>RHOADES</u>	TEMP. <u>75°</u>	TOWNSHIP <u>DANBURY</u>
		SECTION <u>1-6</u>

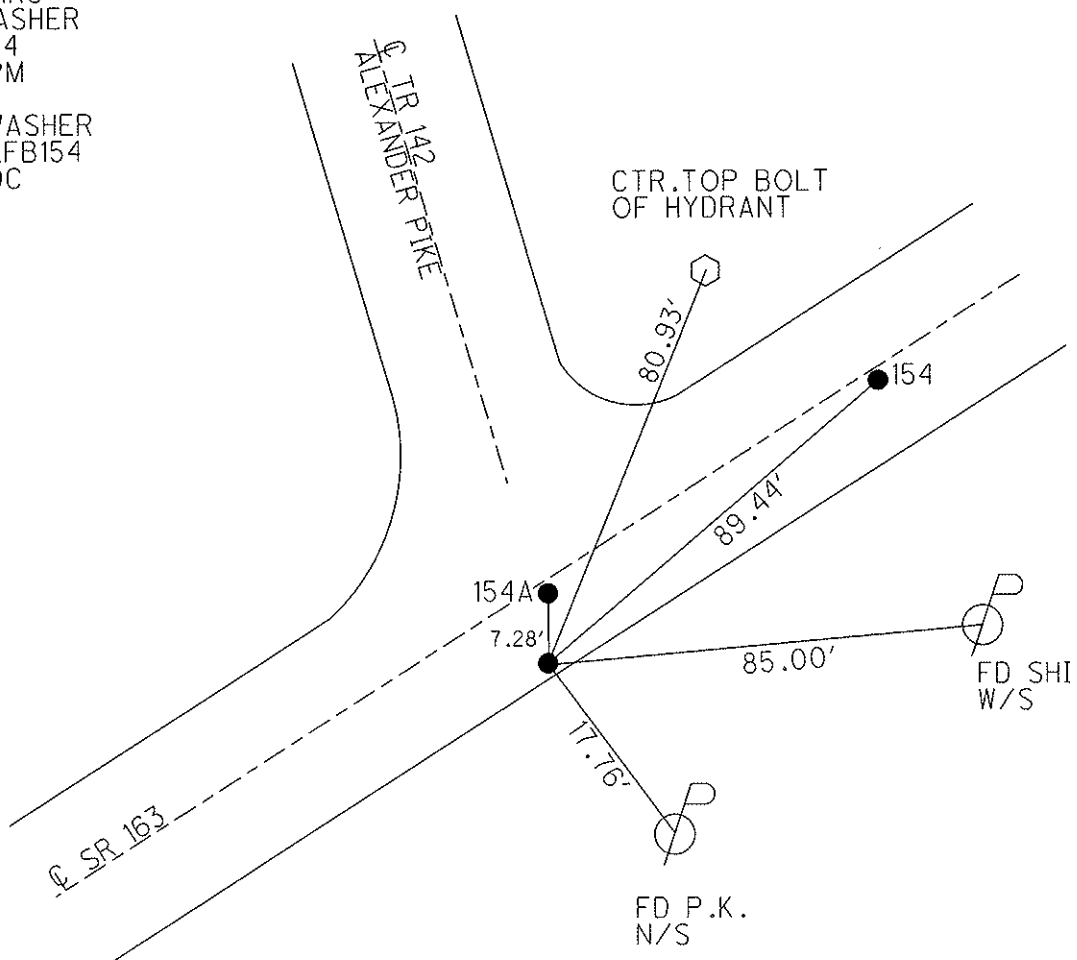
TYPE MONUMENT P.K./WASHER
 ON SURFACE - ~~BELOW~~ ON
 LEFT - CL PAV'T - RIGHT _____
1.6' TO LT EDGE PAVEMENT
 S.L.M. 2089+41.35



Grid: Northing: 673992.593 Easting: 1906432.521

RESET P.K./WASHER
 6/10/96, MRC
 FD P.K./WASHER
 GPS, SVB154
 5/4/10, KPM

 SET MAG/WASHER
 GPS, FINREFB154
 11/8/12, SDC



O.D.O.T. DISTRICT 2 SURVEY OFFICE

PERSONNEL _____

REFERENCE NO. 154

SHEET 52 OF 52

NOTES CANTERBURY

H.C. LOEHRKE

R.C. ROUSOS

DATE 6-7-95

WEATHER FAIR

TEMP. +85° F

ROUTE S.R. #163

COUNTY OTTAWA

TOWNSHIP MARBLEHEAD

SECTION _____

T _____ R _____

TYPE MONUMENT PK NAILS - ORIGIN UNK.

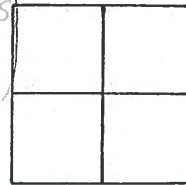
ON SURFACE - BELOW YES

LEFT- & PAVT. - RIGHT LT.

TO EDGE PAVEMENT

S.L.M. 2089 + 40 = PT "A"

SET PK/WASHERS
at all 3 PTS.
6/10/96
M.R.C.



PTS. "A" AND "C" ARE 1' LT & PAVT

PT. "B" IS 1.6' FROM LT EOP.

ALEXANDER PK / C.R. 142

CTR. TOP BOLT OF
FIRE HYDRANT.

PAVT S.R. #163

