

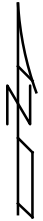
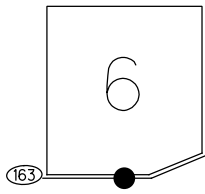
O.D.O.T. DISTRICT 2 SURVEY OFFICE (USE ONLY)

PERSONNEL	REFERENCE NO. <u>156 A</u>	SHEET <u>3</u> OF <u>25</u>
NOTES <u>RHOADES</u>	DATE <u>9/18/18</u>	ROUTE <u>SR 163</u>
H.C. <u>O'DONNELL</u>	WEATHER <u>SUNNY</u>	COUNTY <u>OTTAWA</u>
R.C. <u>MILLER</u>	TEMP. <u>80°</u>	TOWNSHIP <u>DANBURY</u>
		SECTION <u>6</u>
DWG BY <u>NIESE</u>	PID <u>PVTRAIN</u>	T <u>6</u> N R <u>18</u> E

TYPE MONUMENT MAG/WASHER
 ON SURFACE - ~~BELOW~~ ON
 OFFSET CL PAVEMENT ON LT : RT
9.7' TO RT EDGE PAVEMENT
 STATION: 2110+27.8

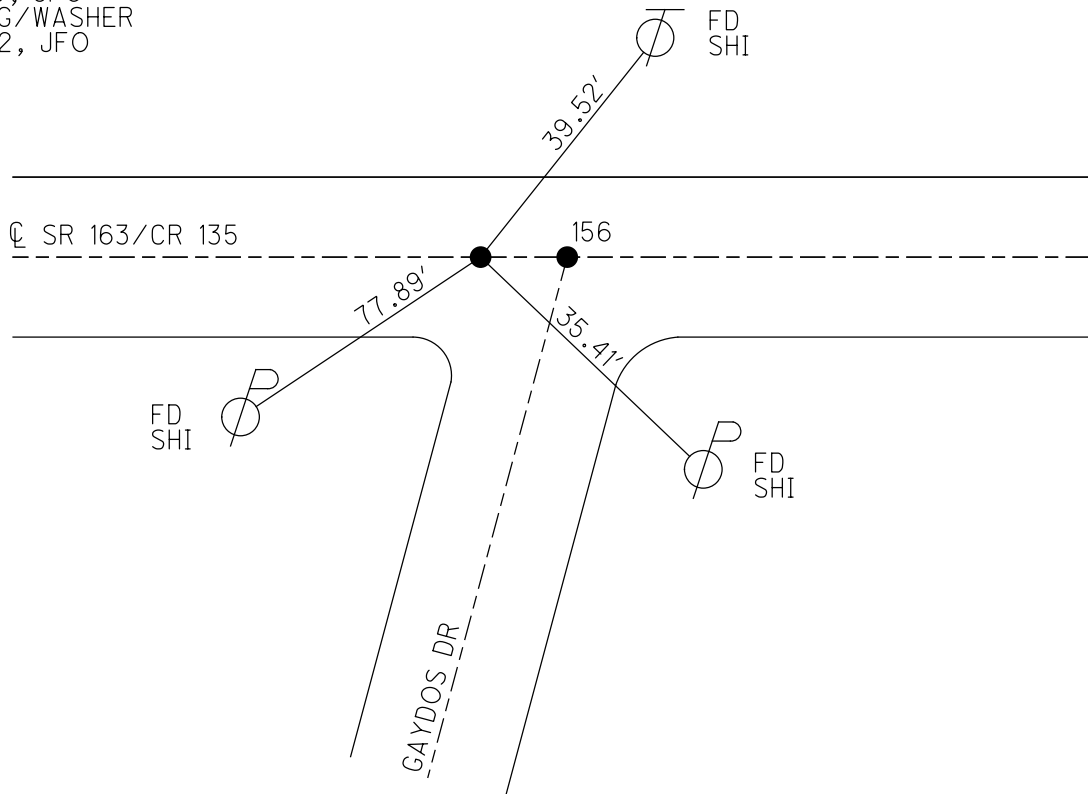
HORZ. DATUM: NAD83 2011 GEOID: NAVD88 2012A
 GRID: NORTHING: 673322.628 EASTING: 1904511.389

NOTE:
THIS MAP IS FOR ODOT PURPOSES ONLY.
TO INDEX REFERENCE TIES, AND DOES NOT
REPRESENT TRUE LAND SUBDIVISION.



RECORD:
 FD P.K. NAIL
 8/14/00, BVD
 SET P.K./WASHER
 4/3/01, BVD
 SET MAG/WASHER
 REFA156
 9/18/18, JFO
 2/8/19, JFO
 FD MAG/WASHER
 2/7/22, JFO

DIST. 156-156A = 7.8'

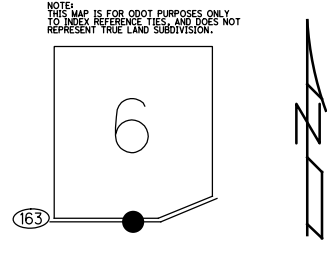


O.D.O.T. DISTRICT 2 SURVEY OFFICE (USE ONLY)

PERSONNEL _____ REFERENCE NO. 156 A SHEET 3 OF 25
 NOTES RHOADES DATE 9/18/18 ROUTE SR 163
 H.C. O'DONNELL WEATHER SUNNY COUNTY OTTAWA
 R.C. MILLER TEMP. 80° TOWNSHIP DANBURY
 DWG BY MILLER PID NO PID SECTION 6
 T 6 N R 18 E

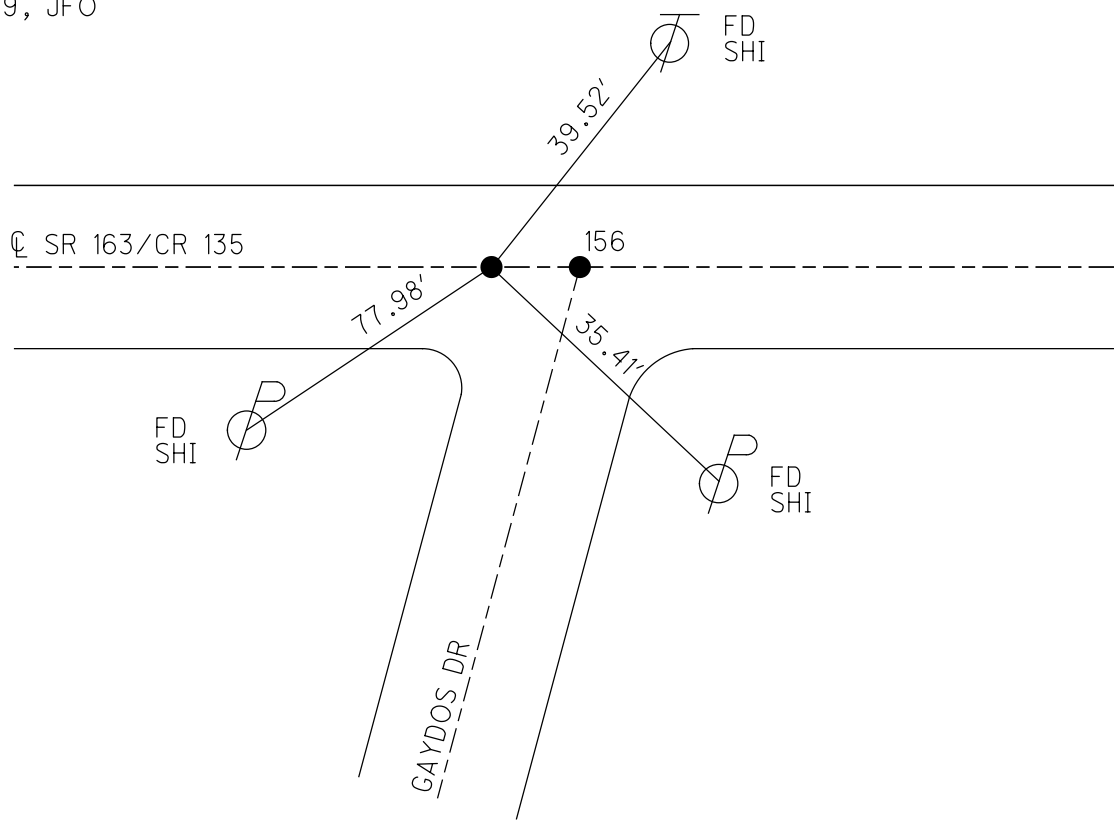
TYPE MONUMENT MAG/WASHER
 ON SURFACE - ~~BELOW~~ ON
 OFFSET Q PAVEMENT ON LT : RT
9.7' TO RT EDGE PAVEMENT
 STATION: 2110+27.8

HORIZ.DATUM: NAD83 2011 GEOID: NAVD88 2012A
 GRID: NORTHING: 673322.628 EASTING: 1904511.389



RECORD:
 FD P.K.NAIL
 8/14/00, BVD
 SET P.K./WASHER
 4-3-01, BVD
 SET MAG/WASHER
 REFA156
 9-18-18
 2/8/19, JFO

DIST.156-156A= 7.8'



O.D.O.T. DISTRICT 2 SURVEY OFFICE

PERSONNEL

REFERENCE NO. 156 SHEET 2 OF 22

NOTES VAN DUSEN

H.C. ROUSOS

R.C. ADAM B.

DATE 8-14-00

WEATHER CLOUDY

TEMP. +65° F

ROUTE 163

COUNTY OTTAWA

TOWNSHIP DANBURY

SECTION 1

T. 6 N. R. 18 E.

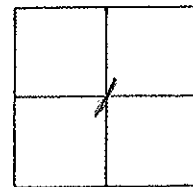
TYPE MONUMENT P.K. NAILS

ON SURFACE - ~~BELOW~~ YES

LEFT - & PAV'T. - RIGHT YES

9.7 TO RT. EDGE PAVEMENT

S.L.M. 2110+20



SET PK & WASHER
4-3-01
B.V.D.

