

O.D.O.T. DISTRICT 2 SURVEY OFFICE (USE ONLY)

PERSONNEL

REFERENCE NO. 172

SHEET 20 OF 25

NOTES RHOADES

DATE 9/20/18

ROUTE SR 163

H.C. MILLER

WEATHER CLOUDY

COUNTY OTTAWA

R.C. O'DONNELL

TEMP. 70°

TOWNSHIP DANBURY

SECTION 10

DWG BY MILLER PID PVTRAIN

T 6 N R 18 E

TYPE MONUMENT P.K./WASHER

ON SURFACE - ~~BELOW~~ ON

OFFSET \varnothing PAVEMENT 2.8' LT : ~~RT~~

9.2' TO RT EDGE PAVEMENT

STATION: 2175+58

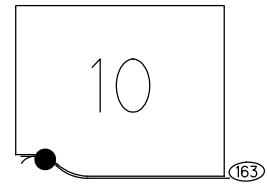
HORZ.DATUM: NAD83 2011

GEOID: NAVD88 2012A

GRID: NORTHING: 673624.809

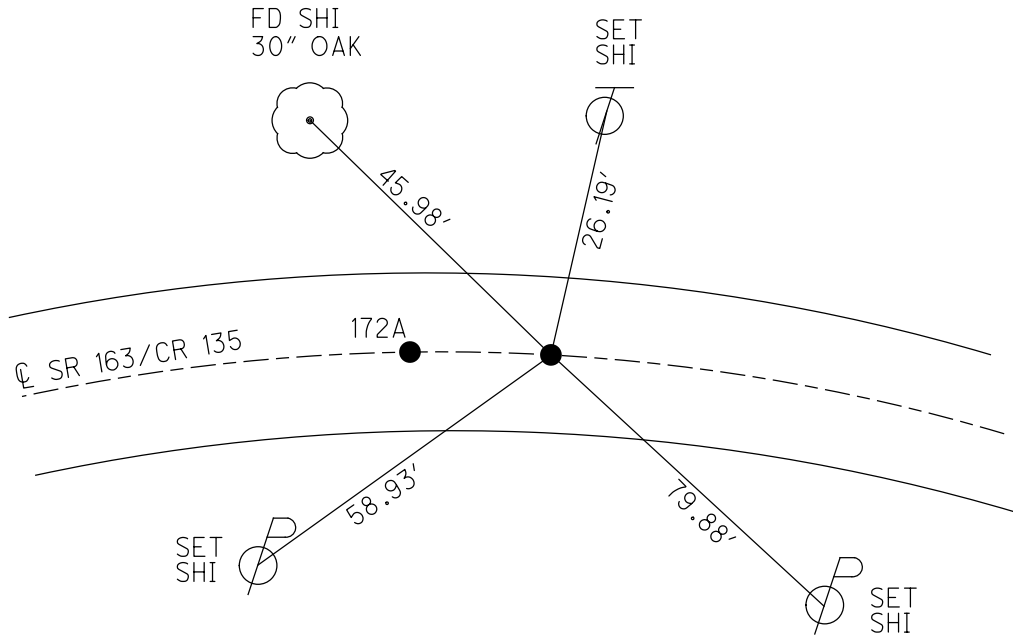
EASTING: 1898087.912

NOTE:
THIS MAP IS FOR ODOT PURPOSES ONLY
TO INDEX, REFERENCE, TIES, AND DOES NOT
REPRESENT TRUE LAND SUBDIVISION.



RECORD:
FD P.K.NAIL
8/14/00, BVD
SET P.K./WASHER
4-3-01, BVD
FD P.K./WASHER
REF172
9-20-18
2/8/19, JFO

DIST. 172-172A= 7.49'



O.D.O.T. DISTRICT 2 SURVEY OFFICE (USE ONLY)

PERSONNEL

REFERENCE NO. 172

SHEET 20 OF 25

NOTES RHOADES

DATE 9/20/18

ROUTE SR 163

H.C. MILLER

WEATHER CLOUDY

COUNTY OTTAWA

R.C. O'DONNELL

TEMP. 70°

TOWNSHIP DANBURY

SECTION 10

DWG BY MILLER

PID NO PID

T 6 N R 18 E

TYPE MONUMENT P.K./WASHER

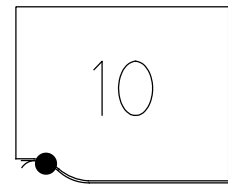
ON SURFACE - ~~BELOW~~ ON

OFFSET $\text{\textcircled{C}}$ PAVEMENT 2.8' LT : ~~RT~~

9.2' TO RT EDGE PAVEMENT

STATION: 2175+58

NOTE:
THIS MAP IS FOR ODOT PURPOSES ONLY.
IT INDEX REFERENCE TIES, AND DOES NOT
REPRESENT TRUE LAND SUBDIVISION.



HORZ.DATUM: NAD83 2011

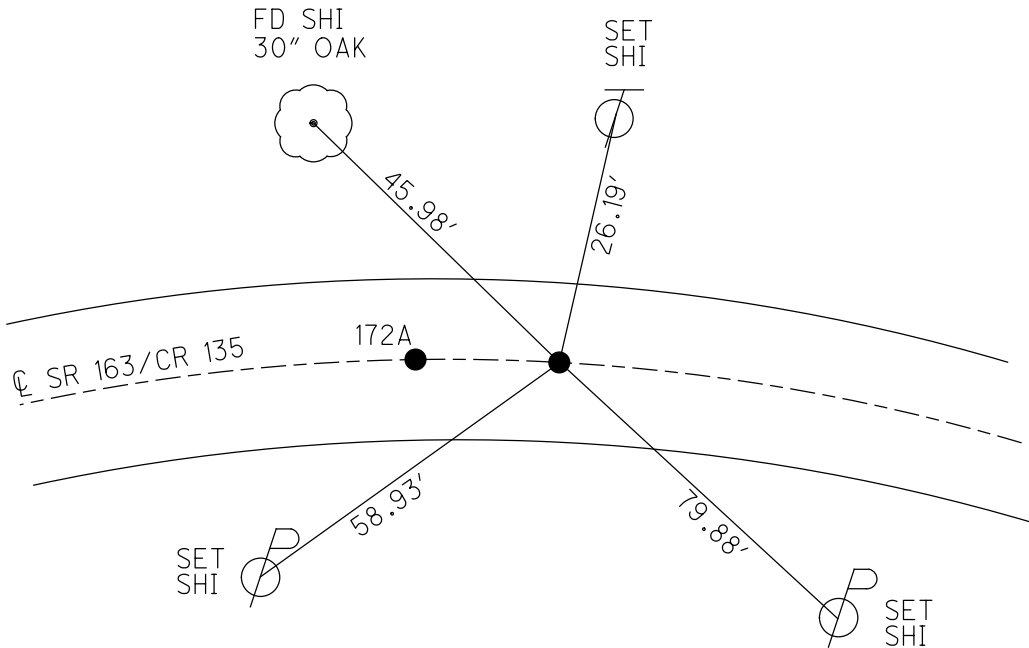
GEOID: NAVD88 2012A

GRID: NORTHING: 673624.809

EASTING: 1898087.912

RECORD:
FD P.K.NAIL
8/14/00, BVD
SET P.K./WASHER
4-3-01, BVD
FD P.K./WASHER
REF172
9-20-18
2/8/19, JFO

DIST. 172-172A= 7.49'



O.D.O.T. DISTRICT 2 SURVEY OFFICE

PERSONNEL

REFERENCE NO. 172

SHEET 18 OF 22

NOTES VAN DUSEN

H.C. Rousos

R.C. ADAM B.

DATE 8-14-00

WEATHER SUNNY

TEMP. +80° F

ROUTE 163

COUNTY OTTAWA

TOWNSHIP DANBURY

SECTION 1

T. 6 N R. 18 E

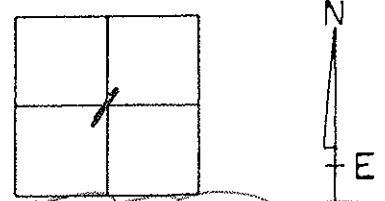
TYPE MONUMENT PK NAILS

ON SURFACE - ~~BELOW~~ YES

LEFT - & PAV'T. - RIGHT YES

9.2 TO RT. EDGE PAVEMENT

S.L.M. P.T. A = 2175+58 P.T. B = 2175+65.5



SET PK WASHER
4-03-01
BVD

