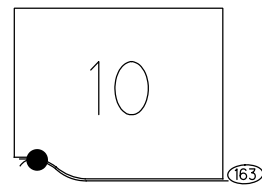


O.D.O.T. DISTRICT 2 SURVEY OFFICE (USE ONLY)

PERSONNEL _____ REFERENCE NO. 173 SHEET 22 OF 25
 NOTES RHOADES DATE 9/20/18 ROUTE SR 163
 H.C. MILLER WEATHER CLOUDY COUNTY OTTAWA
 R.C. O'DONNELL TEMP. 70° TOWNSHIP DANBURY
 DWG BY MILLER PID PVTRAIN SECTION 10
 T 6 N R 18 E

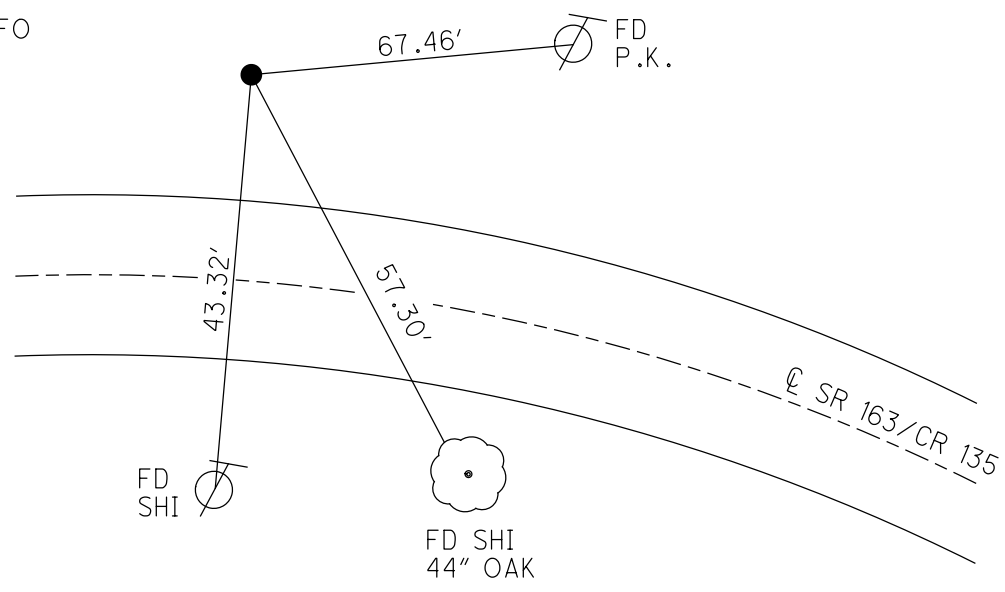
TYPE MONUMENT CMON W/ MAG NAIL
~~ON SURFACE~~ - BELOW 5"
 OFFSET \odot PAVEMENT 24' ~~±~~ : RT
13' RT TO RT EDGE PAVEMENT
 STATION: 2177+26

NOTE:
THIS MAP IS FOR ODOT PURPOSES ONLY
TO INDEX REFERENCE TIES, AND DOES NOT
REPRESENT TRUE LAND SUBDIVISION.



HORIZ.DATUM: NAD83 2011 GEOID: NAVD88 2012A
 GRID: NORTHING: 673715.559 EASTING: 1897941.194

RECORD: P.I.
 STA 239+97.16
 FD IPIN
 8/14/00
 4-3-01, BVD
 FD CMON
 W/MAG NAIL ATOP
 5" DOWN
 REF173
 9-20-18, JFO



O.D.O.T. DISTRICT 2 SURVEY OFFICE (USE ONLY)

PERSONNEL _____ REFERENCE NO. 173 SHEET 22 OF 25
 NOTES RHOADES DATE 9/20/18 ROUTE SR 163
 H.C. MILLER WEATHER CLOUDY COUNTY OTTAWA
 R.C. O'DONNELL TEMP. 70° TOWNSHIP DANBURY
 DWG BY MILLER PID NO PID SECTION 10
 T 6 N R 18 E

TYPE MONUMENT CMON W/ MAG NAIL

~~ON SURFACE~~ - BELOW 5"

OFFSET \odot PAVEMENT 24' \pm : RT

13' RT TO RT EDGE PAVEMENT

STATION: 2177+26

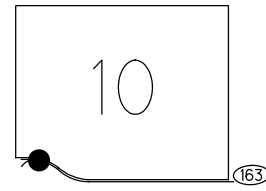
HORIZ.DATUM: NAD83 2011

GEOID: NAVD88 2012A

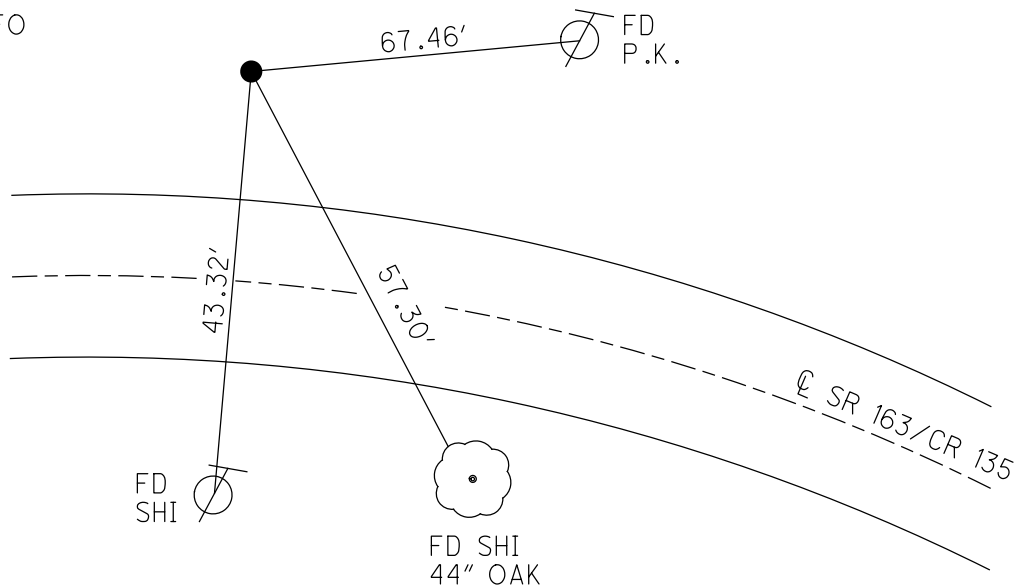
GRID: NORTHING: 673715.559

EASTING: 1897941.194

NOTE:
THIS MAP IS FOR ODOT PURPOSES ONLY
TO CHECK REFERENCE TIES, AND DOES NOT
REPRESENT TRUE LAND SUBDIVISION.



RECORD: P.I.
 STA 239+97.16
 FD IPIN
 8/14/00
 4-3-01, BVD
 FD CMON
 W/MAG NAIL ATOP
 5" DOWN
 REF173
 9-20-18, JFO



O.D.O.T. DISTRICT 2 SURVEY OFFICE

PERSONNEL

REFERENCE NO. 173

SHEET 19 OF 22

NOTES VAN DUSEN

H.C. Rousos

DATE 8-14-00

ROUTE 163

R.C. ADAM B.

WEATHER CLOUDY

COUNTY OTTAWA

TEMP. +80° F

TOWNSHIP DANBURY

SECTION 1

T. 6 N R. 18 E

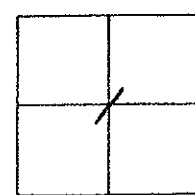
TYPE MONUMENT IRON PIPE

ON SURFACE - BELOW 1.0'

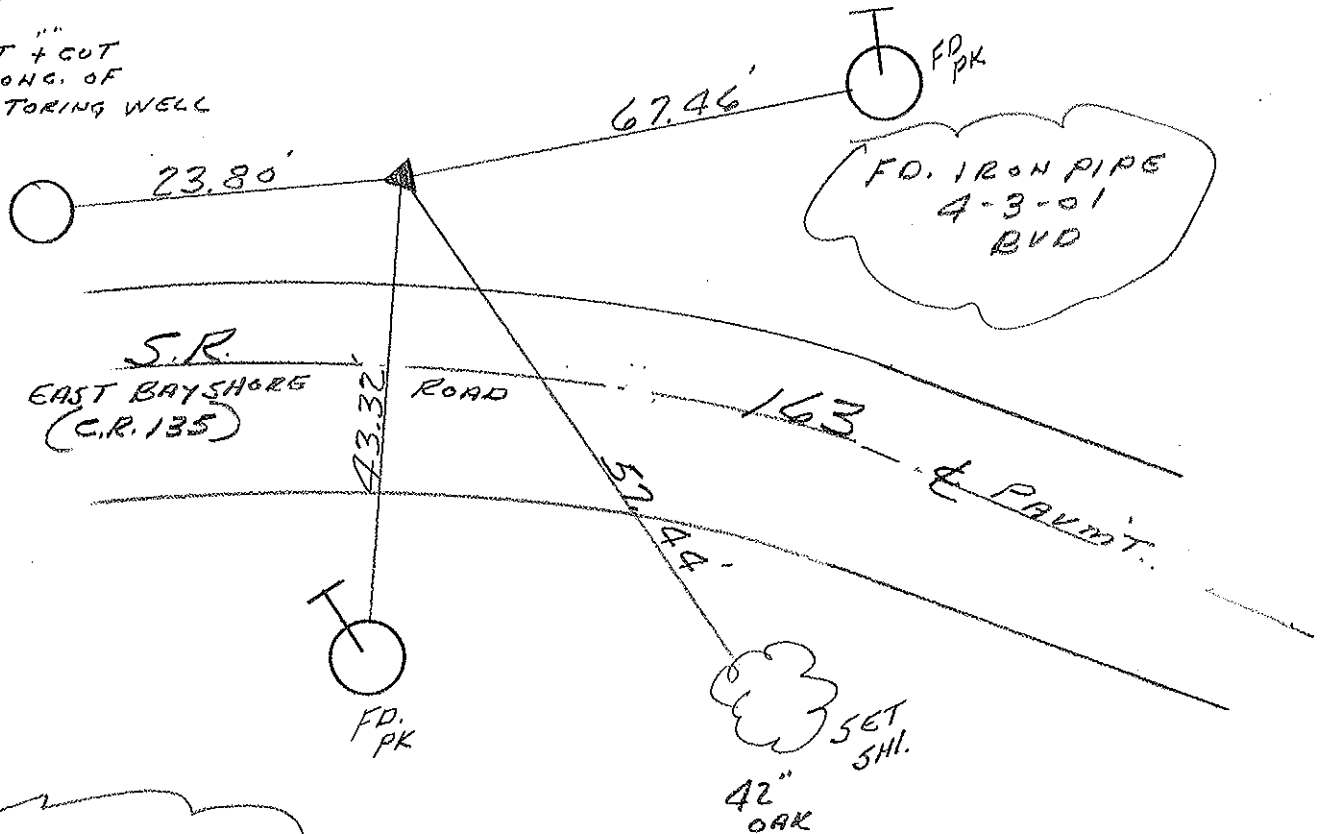
LEFT - & PAV'T. - RIGHT 24'

TO EDGE PAVEMENT 13' RT. OF RT. EOP

S.L.M. 2177+26



SET & CUT
IN CONG. OF
MONITORING WELL



REC. P.I.
PLAN STA. 239+97.16
PER CO. PLANS