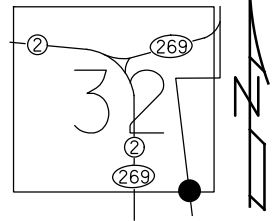


O.D.O.T. DISTRICT 2 SURVEY OFFICE (USE ONLY)

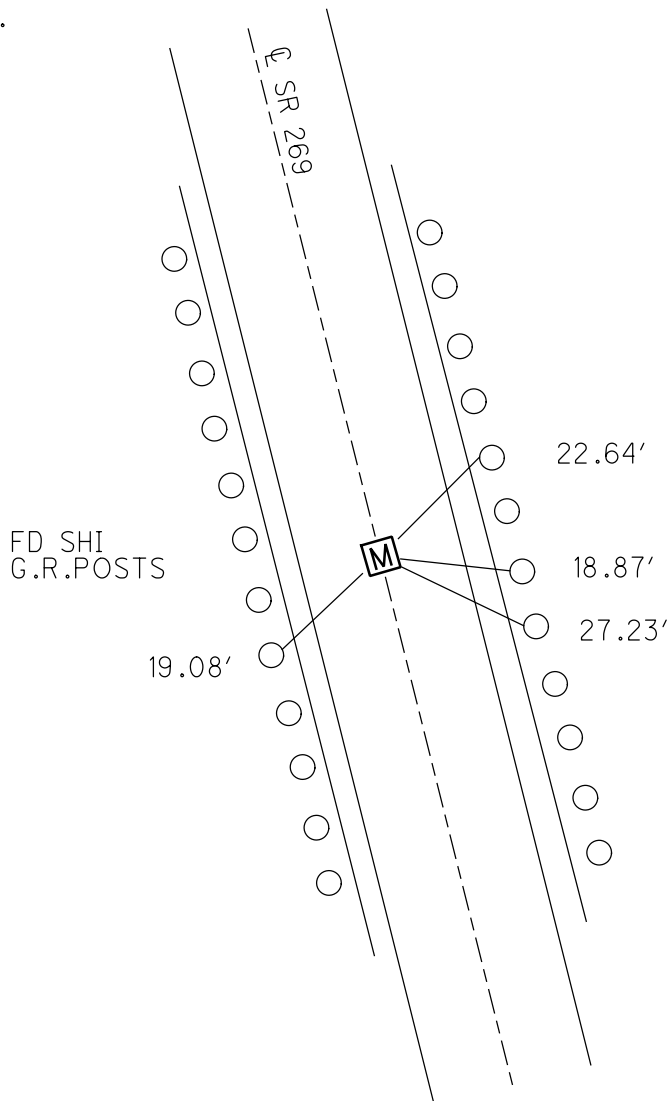
PERSONNEL \_\_\_\_\_ REFERENCE NO. 1 SHEET 1 OF 7  
 NOTES LUMBREZER DATE 4/29/11 ROUTE OLD SR 269  
 H.C. MOSER WEATHER CLOUDY COUNTY OTTAWA  
 R.C. LUMBREZER TEMP. 62° TOWNSHIP DANBURY  
 \_\_\_\_\_ SECTION 4-32  
 \_\_\_\_\_

TYPE MONUMENT MONBOX  
 ON SURFACE - ~~BELOW~~ ON  
 LEFT - ☉ PAV'T - RIGHT ON  
15.5' TO RT EDGE PAVEMENT  
 S.L.M. 30+00  
 GRID: NORTHING: 664328.601 EASTING: 1877830.410

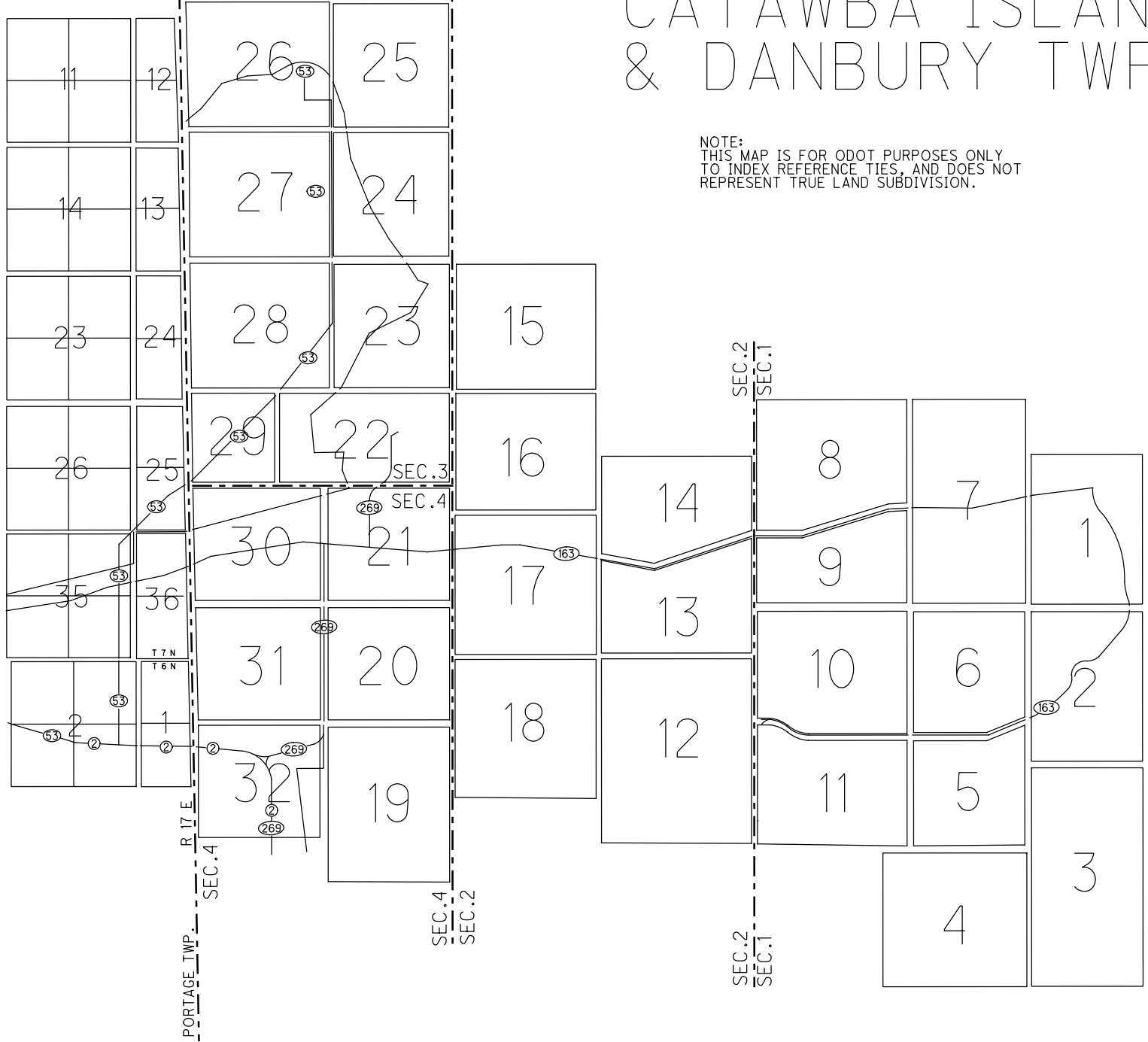
NOTE:  
THIS MAP IS FOR ODOT PURPOSES ONLY.  
TO INDEX REFERENCE TIES, AND DOES NOT  
REPRESENT TRUE LAND SUBDIVISION.



RECORD: P.O.T.  
 REF 1 269  
 RJL, 4/29/11



CONNECTICUT WESTERN RESERVE LINE



# CATAWBA ISLAND & DANBURY TWP

NOTE:  
THIS MAP IS FOR ODOT PURPOSES ONLY  
TO INDEX REFERENCE TIES, AND DOES NOT  
REPRESENT TRUE LAND SUBDIVISION.

O.D.O.T. DISTRICT 2 SURVEY OFFICE

PERSONNEL \_\_\_\_\_

REFERENCE NO. 1

SHEET \_\_\_\_\_ OF \_\_\_\_\_

NOTES LOEHKE

H.C. CANTERBURY

DATE 12-2-94

ROUTE S.R. 269

R.C. SLOVAK

WEATHER WINDY

COUNTY OTTAWA

TEMP. +40

TOWNSHIP DANBURY

SECTION \_\_\_\_\_

T. \_\_\_\_\_ R. \_\_\_\_\_

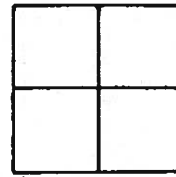
TYPE MONUMENT Mon Box

ON SURFACE - ~~BELOW~~ Yes

~~LEFT - & PAV'T. - RIGHT~~ Yes

15.5 TO Rt EDGE PAVEMENT

S.L.M. 30+00



Record P.O.T.

