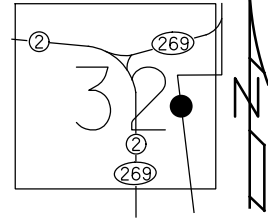


O.D.O.T. DISTRICT 2 SURVEY OFFICE (USE ONLY)

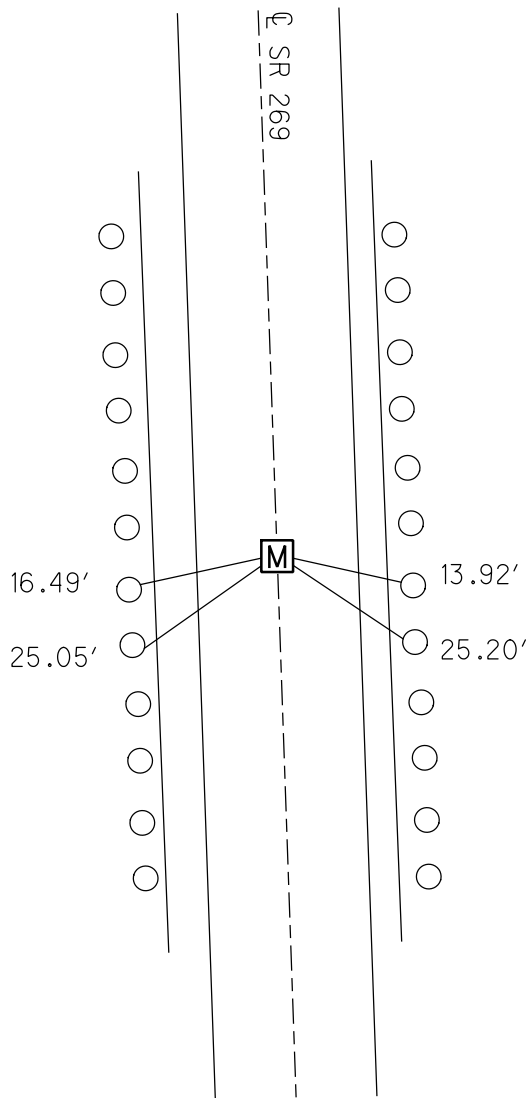
PERSONNEL _____ REFERENCE NO. 3 SHEET 3 OF 7
 NOTES LUMBREZER DATE 4/29/11 ROUTE OLD SR 269
 H.C. MOSER WEATHER CLOUDY COUNTY OTTAWA
 R.C. LUMBREZER TEMP. 62° TOWNSHIP DANBURY
 _____ SECTION 4-32

TYPE MONUMENT MONBOX
 ON SURFACE - ~~BELOW~~ ON
 LEFT - ☉ PAV'T - RIGHT ON
10.7' TO RT EDGE PAVEMENT
 S.L.M. 69+00
 GRID: NORTHING: 668155.985 EASTING: 1877149.435

NOTE- THIS MAP IS FOR ODOT PURPOSES ONLY TO INDEX REFERENCE TIES, AND DOES NOT REPRESENT TRUE LAND SUBDIVISION.



RECORD: P.O.T.
 REF 3 269
 RJL, 4/29/11



FD SHI
 G.R.POSTS

O.D.O.T. DISTRICT 2 SURVEY OFFICE

PERSONNEL

REFERENCE NO. 3

SHEET OF

NOTES LOEHRKE

H.C. CANTERBURY

R.C. SLOVAK

DATE 12/2/94

WEATHER WINDY

TEMP. +40°

ROUTE S.R. 269

COUNTY OTTAWA

TOWNSHIP DANBURY

SECTION

T R

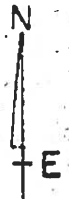
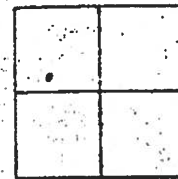
TYPE MONUMENT Man Box

ON SURFACE - BELOW ON Surface

LEFT - PAV'T. - RIGHT ON

10.7 TO RT EDGE PAVEMENT

S.L.M. 69+00



Record P.O.T.

SET SHI. IN
GRAIL POSTS

SET SHI. IN
G-RAIL POSTS

